

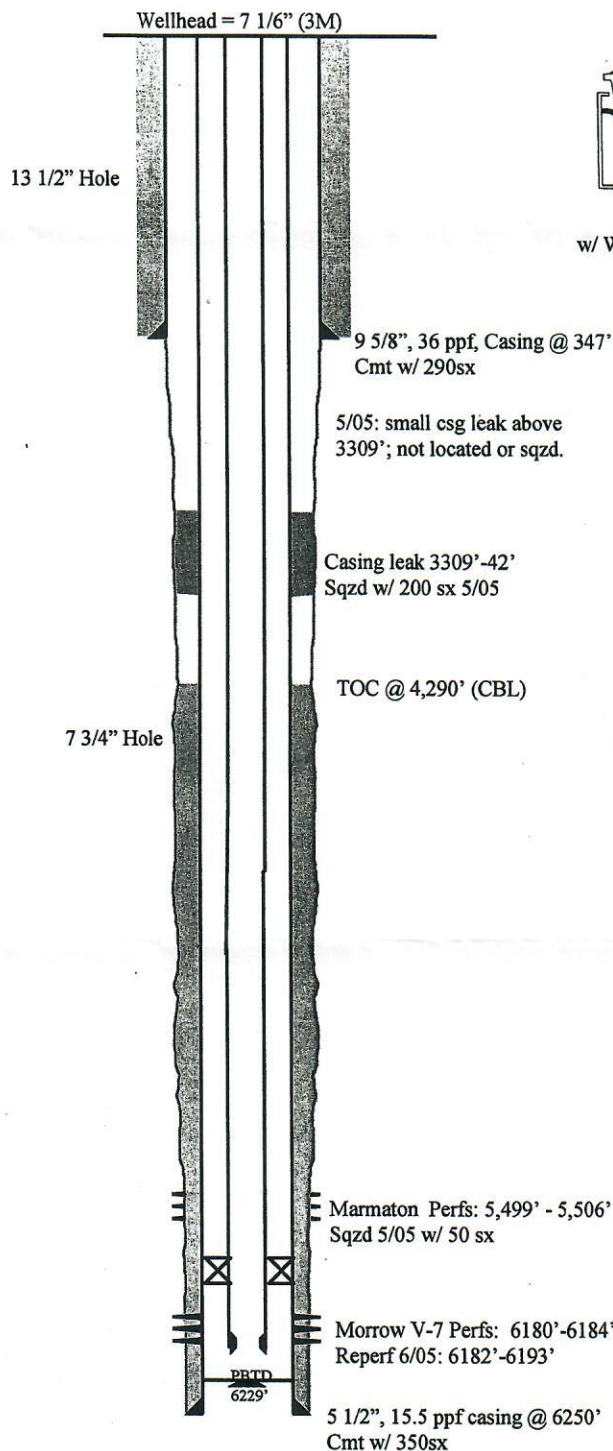


RECEIVED

AUG 22 05

COGCC

Well Name: Bledsoe 22C-31 #6 **Field:** Bledsoe Ranch/Marmaton
Date: 8/3/05 **Location:** SE NW Sec. 31, T12S, R50W
County: Cheyenne **State:** Colorado



Lufkin 456
w/ Wauk 330gas engine

Surface: 2450' FWL & 3000' FSL
Sec. 31, T12S, R50W
Cheyenne County, CO

Completed: October 1984

Elevation: 4805'

KB: 9'

API #: 05-017-6478

Qty	Size	Type	Length
70	1"	D	1,750
74	7/8"	D	1,850
102	3/4"	D	2,550
Polish Rod: 1 1/2" x30'			
Pony Rods: 22' of rod subs			
Pump: 2.5" x 1.5" x 20' RWBC			

Qty	Description	Length	Depth
---	KB	5	5.00
185	2 7/8", 6.5 ppf, J-55 tbg	6,103.98	6,108.98
1	Baker TAC (5 1/2" OD, 15.5 ppf)	2.73	6,111.71
3	2 7/8", 6.5 ppf, J-55 tbg	97.90	6,209.61
1	SN	1.10	6,210.71
1	DSV assembly	5.00	6,215.71

[illegible]