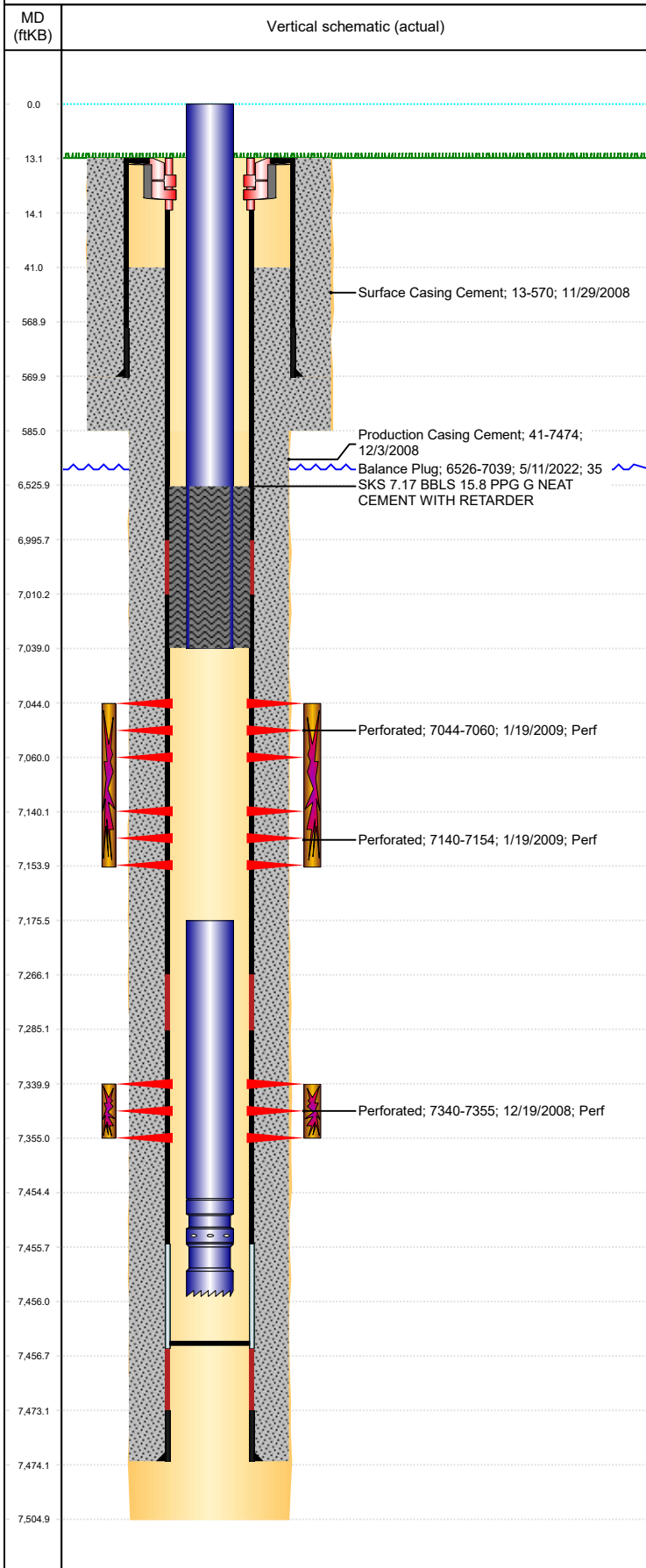




# P&A Wellbore For State

Well Name: KISSLER K21-32D

Land, Original Hole, 6/3/2022 3:20:13 PM



Well Header									
Surface UWI 0512327010			Business Unit Rockies			Gov Auth Dist		Prod Tree Loc Land	
Orig. KB to Gnd (ft) 13.00		Original Spud Date 11/29/2008		Abandon Date		Well Sub-Status TA			High... N
Comment STATE PERMIT LISTS WELL AS K21-32 SO NO "D" IS ADDED ON PROG FORM									
Surface Location (Congressional)									
Qtr 3 NW	Qtr 4 SW	Section 21	Twonshp 4	Twonsh... N	Range 66	Rng E/... W	Latitude (°) 40.29544295	Longitude (°) -104.78948428	
Wellbore Sections									
Section Des			Hole Size (in)			Act Top (ftKB)		Act Btm (ftKB)	
SURFACE			12 1/4			13.0		585.0	
PRODUCTION			7 7/8			585.0		7,505.0	
Casing Strings									
Csg Des			Run Date		OD (in)	Wt/Len (lb/ft)	Grade	Top Depth (MD) (ftKB)	Set Depth (MD) (ftKB)
Surface			11/29/2008		8 5/8	24.00	J-55	13	570
Production Casing			12/2/2008		4 1/2	11.60	M-80	13	7474
Cement									
Des					Start Date		Top (ftKB)		Btm (ftKB)
Surface Casing Cement					11/29/2008		13.0		570.0
Production Casing Cement					12/3/2008		41.0		7,474.0
Balance Plug					5/11/2022		6,526.0		7,039.0
Zone Statuses									
Zone Name		Status Date	Status	Fluid Type	Job			Prod Method	
NIOBRARA	1/23/2009	PR			DRILLING/COMPLETION - ORIGINAL, 11/28/200...				
NIOBRARA	5/11/2022	TA			SET CEMENT PLUG, 5/9/2022 00:00				
CODELL	1/23/2009	PR			DRILLING/COMPLETION - ORIGINAL, 11/28/200...				
CODELL	5/11/2022	TA			SET CEMENT PLUG, 5/9/2022 00:00				
Perforation Data									
Linked Zone			Explosive Type	Entered Shot Total	Top (ftKB)		Btm (ftKB)		Date
NIOBRARA, Original Hole			A	32	7,044.0		7,060.0		1/19/2009
NIOBRARA, Original Hole			B	28	7,140.0		7,154.0		1/19/2009
CODELL, Original Hole			01	60	7,340.0		7,355.0		12/19/2008
Stimulation Intervals									
Zone				Start Date		Top (ftKB)		Btm (ftKB)	
NIOBRARA, Original Hole				1/19/2009		7,044.0		7,154.0	
CODELL, Original Hole				1/19/2009		7,340.0		7,355.0	
Other In Hole									
Run Date		Des			Make		OD (in)	Top (ftKB)	Btm (ftKB)
Logs									
Date		Type					Depth Top (MD) (ftKB)		Btm (ftKB)
12/2/2008		Caliper/Comp. Density/Neutron/GR/SP/ML					2,450		7,509.0
12/2/2008		DIL/GR/SP/Caliper					572		7,509.0
12/19/2008		CBL/CCL/GR					0		7,472.0
Plug Back Total Depths									
Date		Type		Com					PBTD (ftKB)
12/19/2008		FLOAT COLLAR							7,472
3/6/2009		PLUG REMNANTS							7,457