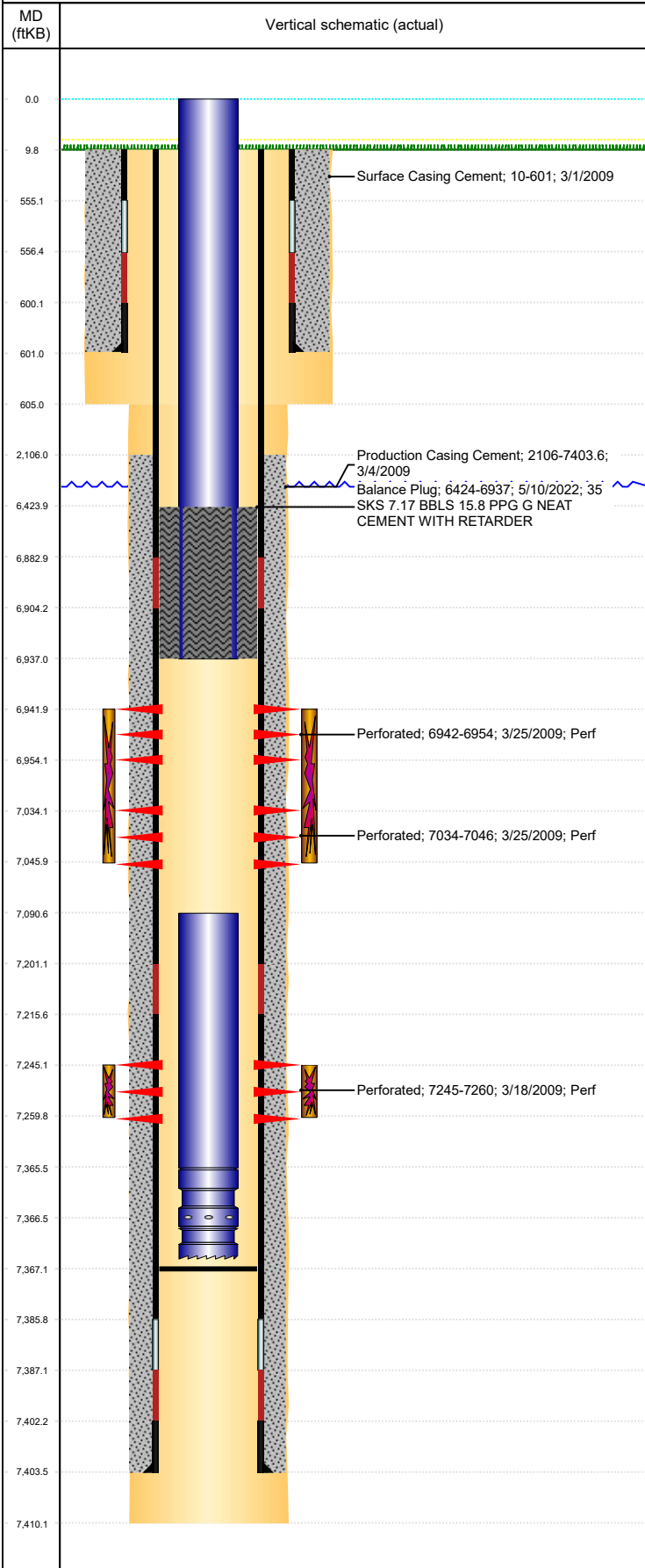




P&A Wellbore For State

Well Name: SANDAU K21-24

Land, Original Hole, 6/3/2022 3:16:57 PM



Well Header

Surface UWI 0512329409	Business Unit Rockies	Gov Auth Dist	Prod Tree Loc Land
Orig. KB to Gnd (ft) 10.00	Original Spud Date 2/28/2009	Abandon Date	Well Sub-Status TA
High... N			

Comment
318Ae LOCATION

Surface Location (Congressional)

Qtr 3 SW	Qtr 4 SE	Section 21	Twonshp 4	Twonsh... N	Range 66	Rng E... W	Latitude (°) 40.29324513 3	Longitude (°) -104.78239778
-------------	-------------	---------------	--------------	----------------	-------------	---------------	----------------------------------	--------------------------------

Wellbore Sections

Section Des	Hole Size (in)	Act Top (ftKB)	Act Btm (ftKB)
SURFACE	9 7/8	10.0	605.0
PRODUCTION	6 1/4	605.0	7,410.0

Casing Strings

Csg Des	Run Date	OD (in)	Wt/Len (lb/ft)	Grade	Top Depth (MD) (ftKB)	Set Depth (MD) (ftKB)
Surface	2/28/2009	7	17.00	H-40	9.9	601
Production Casing	3/4/2009	4 1/2	11.60	M-80	10	7403.6

Cement

Des	Start Date	Top (ftKB)	Btm (ftKB)
Surface Casing Cement	3/1/2009	10.0	601.0
Production Casing Cement	3/4/2009	2,106.0	7,403.6
Balance Plug	5/10/2022	6,424.0	6,937.0

Zone Statuses

Zone Name	Status Date	Status	Fluid Type	Job	Prod Method
NIOBRARA	3/26/2009	PR		DRILLING/COMPLETION - ORIGINAL, 2/28/2009...	
NIOBRARA	5/10/2022	TA		SET CEMENT PLUG, 5/9/2022 00:00	
CODELL	3/26/2009	PR		DRILLING/COMPLETION - ORIGINAL, 2/28/2009...	
CODELL	5/10/2022	TA		SET CEMENT PLUG, 5/9/2022 00:00	

Perforation Data

Linked Zone	Explosive Type	Entered Shot Total	Top (ftKB)	Btm (ftKB)	Date
NIOBRARA, Original Hole	A	24	6,942.0	6,954.0	3/25/2009
NIOBRARA, Original Hole	B	24	7,034.0	7,046.0	3/25/2009
CODELL, Original Hole		60	7,245.0	7,260.0	3/18/2009

Stimulation Intervals

Zone	Start Date	Top (ftKB)	Btm (ftKB)
NIOBRARA, Original Hole	3/25/2009	6,942.0	7,046.0
CODELL, Original Hole	3/25/2009	7,245.0	7,260.0

Other In Hole

Run Date	Des	Make	OD (in)	Top (ftKB)	Btm (ftKB)

Logs

Date	Type	Depth Top (MD) (ftKB)	Btm (ftKB)
3/4/2009	Caliper/Comp. Density/Neutron/GR/SP/ML	2,450	7,419.0
3/4/2009	DIL/GR/SP/Caliper	595	7,419.0
3/18/2009	CBL/CCL/GR	1,673	7,355.0

Plug Back Total Depths

Date	Type	Com	PBTD (ftKB)
3/4/2009	FLOAT COLLAR		7,355
3/18/2010	FILL	C/O TO 7367' & DID NOT TAG.	7,367