

## **ATTACHMENT B**



## TANK BATTERY DECOMMISSIONING FORM

<b>SITE NAME:</b> Brant HZ Facility							<b>DATE:</b> 6/2/2022	<b>REM. PROJECT #:</b>	<b>WEATHER:</b> Sunny 70's
<b>SITE DIRECTIONS:</b> From HWY 7 and Riverdale Road travel south 3/10 of a mile to location							<b>CLIENT:</b> PDC - Cheyenne		
<b>LEGALS AND LAT/LONG:</b>							<b>TASMAN PERSONNEL:</b> Sam Anderson		
<b>SOIL TYPES:</b> Clayey Sand - SC							<b>SURFACE GRADIENT:</b> Southeast		
SOIL SAMPLING							FACILITY INFRASTRUCTURE		
Date/Time	Soil Sample ID	PID (ppm)	Visual	Olfactory	Photo?	Grab or Lab Sample?	EQUIPMENT		Quantity
							Above Ground Storage Tank (AST)		
6/2/2022 10:40	GS01 @ 0-6"	3.4	HC Staining	Slight HC Odor	Yes	Grab	Buried or Partially Buried Vessel		
6/2/2022 10:42	GS02 @ 0-6"	0.8	No Staining	No Odor	Yes	Grab	Separator		
6/2/2022 10:44	GS03 @ 0-6"	11.5	HC Staining	Slight HC Odor	Yes	Grab	Emission Control Device (ECD)		
6/2/2022 10:46	GS04 @ 0-6"	0.4	No Staining	No Odor	Yes	Grab	Dump Line		
6/2/2022 10:48	GS05 @ 0-6"	14.9	HC Staining	Slight HC Odor	Yes	Grab	Wellhead		
6/2/2022 11:00	GS06@0-6"	1.4	No Staining	Slight HC Odor	Yes	Grab	Flowline		
6/2/2022 11:02	GS07@0-6"	224.7	HC Staining	HC Odor	Yes	Grab	<b>Other:</b>		
6/2/2022 11:04	GS08@0-6"	4.6	HC Staining	Slight HC Odor	Yes	Grab	Soil Loads Removed		
6/2/2022 11:06	GS09@0-6"	0.0	No Staining	No Odor	Yes	Grab	IMPACTED SOIL IDENTIFIED?		
6/2/2022 11:08	GS10 @ 0-6"	5.4	HC Staining	Slight HC Odor	Yes	Grab	ESTIMATED VOLUME OF IMPACTS:		
							Date	Number	CY
6/2/2022 11:10	GS11 @ 0-6"	0.0	No Staining	No Odor	Yes	Grab	6/2/2022		15
6/2/2022 11:12	GS12 @ 0-6"	0.0	No Staining	No Odor	Yes	Grab			
6/2/2022 11:56	SS01 @ 0-6"	2,266	HC Staining	Strong HC Odor	Yes	Lab			
6/2/2022 12:02	SS02 @ 0-6"	2.9	No Staining	Slight HC Odor	Yes	Lab			
6/2/2022 12:18	SS03 @ 0-6"	1.2	No Staining	Slight HC Odor	Yes	Lab			
6/2/2022 12:30	SS04 @ 0-6"	0.5	No Staining	No Odor	Yes	Lab	Total Removed		0      15
6/2/2022 12:38	SS05 @ 0-6"	0.9	No Staining	No Odor	Yes	Lab	Disposal Facility:		
6/2/2022 12:45	SS06 @ 0-6"	377.6	HC Staining	HC Odor	Yes	Lab	Groundwater Recovery		
6/2/2022 12:51	SS07 @ 0-6"	5.2	No Staining	No Odor	Yes	Lab	DATE GW ENCOUNTERED:		DEPTH:
6/2/2022 13:00	SS08 @ 0-6"	6.4	No Staining	No Odor	Yes	Lab	GROUNDWATER IN CONTACT WITH IMPACTED SOIL?		
							LNAPL OR SHEEN OBSERVED ON GW?		
GROUNDWATER SAMPLING							Date		BBLS
Date/Time	Groundwater Sample ID	Depth Collected	Turbid?	Sheen?	Odor?	Photo?	6/2/2022		20
							Total Removed		20
							Disposal Facility:		



### Photographic Log



<b>Equipment ID:</b>		<b>Equipment Type:</b>	
<b>Material:</b>	<b>Volume:</b>	<b>Contents:</b>	
<b>Notes/Conditions:</b> Point of release			

<b>Equipment ID:</b> Release area		<b>Equipment Type:</b>	
<b>Material:</b>	<b>Volume:</b>	<b>Contents:</b>	
<b>Notes/Conditions:</b>			

## Photographic Log



<b>Equipment ID:</b>		<b>Equipment Type:</b>	
<b>Material:</b>	<b>Volume:</b>	<b>Contents:</b>	
<b>Notes/Conditions:</b> Western view of release area			

<b>Equipment ID:</b>		<b>Equipment Type:</b>	
<b>Material:</b>	<b>Volume:</b>	<b>Contents:</b>	
<b>Notes/Conditions:</b> Standing at point of release - showing south western view			

## Photographic Log



<b>Equipment ID:</b>		<b>Equipment Type:</b>	
<b>Material:</b>	<b>Volume:</b>	<b>Contents:</b>	
<b>Notes/Conditions:</b> Standing at north end of separator viewing release area to the south			

<b>Equipment ID:</b>		<b>Equipment Type:</b>	
<b>Material:</b>	<b>Volume:</b>	<b>Contents:</b>	
<b>Notes/Conditions:</b> Standing at NW corner of release area showing separator release and release area			

## Photographic Log

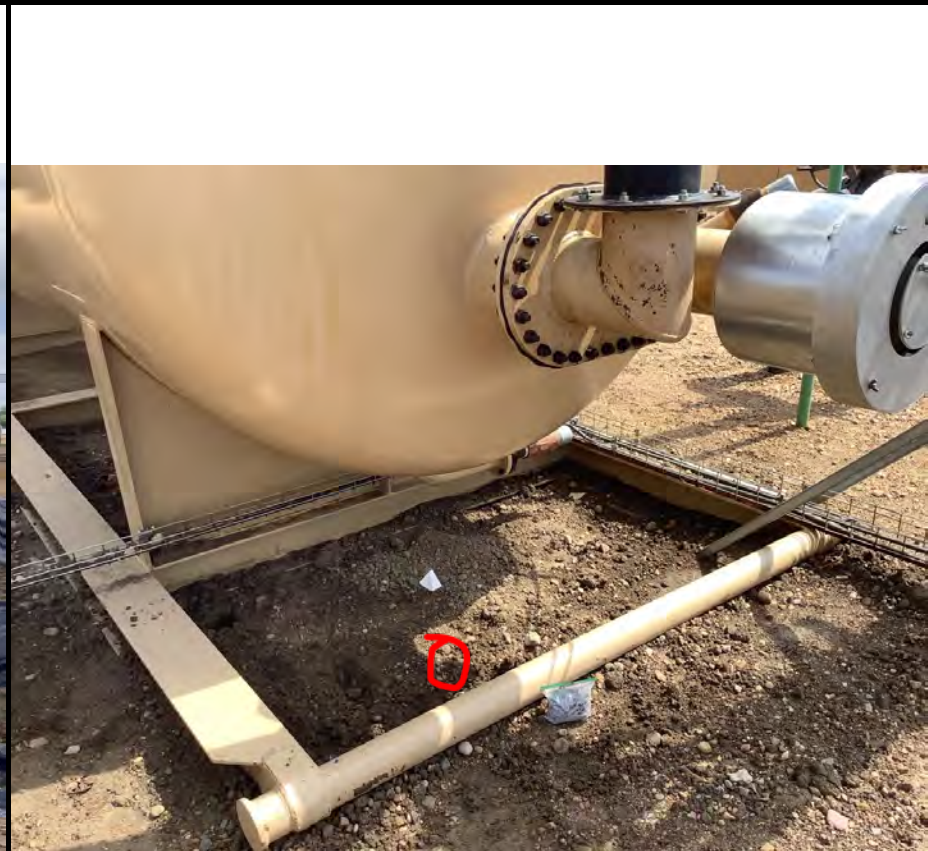


<b>Equipment ID:</b>		<b>Equipment Type:</b>		<b>Equipment ID:</b>		<b>Equipment Type:</b>	
<b>Material:</b>	<b>Volume:</b>	<b>Contents:</b>		<b>Material:</b>	<b>Volume:</b>	<b>Contents:</b>	
<b>Notes/Conditions:</b> Standing at western extent of release area showing pooled water between infrastructure				<b>Notes/Conditions:</b> Standing at south western extent of release showing release point and release between infrastructure			

## Photographic Log



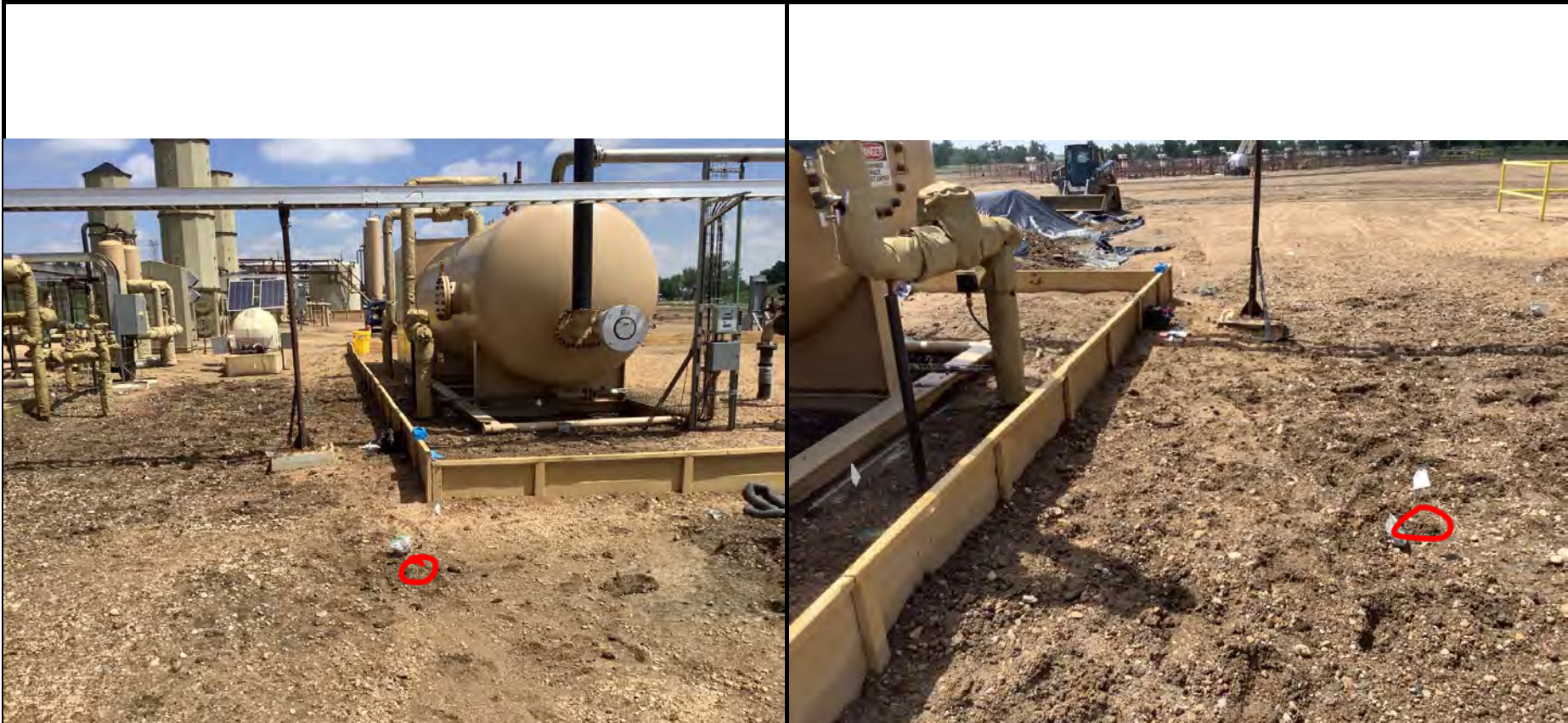
<b>Equipment ID:</b>		<b>Equipment Type:</b>		<b>Equipment ID:</b>		<b>Equipment Type:</b>	
<b>Material:</b>	<b>Volume:</b>	<b>Contents:</b>		<b>Material:</b>	<b>Volume:</b>	<b>Contents:</b>	
<b>Notes/Conditions:</b> South western corner of release area and entire release extent				<b>Notes/Conditions:</b> Release point and half of stock pile			

**Photographic Log**


<b>Equipment ID:</b>		<b>Equipment Type:</b>	
<b>Material:</b>	<b>Volume:</b>	<b>Contents:</b>	
<b>Notes/Conditions:</b> Stockpiled release area material			

<b>Equipment ID:</b> GS01		<b>Equipment Type:</b>	
<b>Material:</b>	<b>Volume:</b>	<b>Contents:</b>	
<b>Notes/Conditions:</b>			

### Photographic Log



<b>Equipment ID:</b> GS02		<b>Equipment Type:</b>	
<b>Material:</b>	<b>Volume:</b>	<b>Contents:</b>	
<b>Notes/Conditions:</b>			

<b>Equipment ID:</b> GS03		<b>Equipment Type:</b>	
<b>Material:</b>	<b>Volume:</b>	<b>Contents:</b>	
<b>Notes/Conditions:</b>			

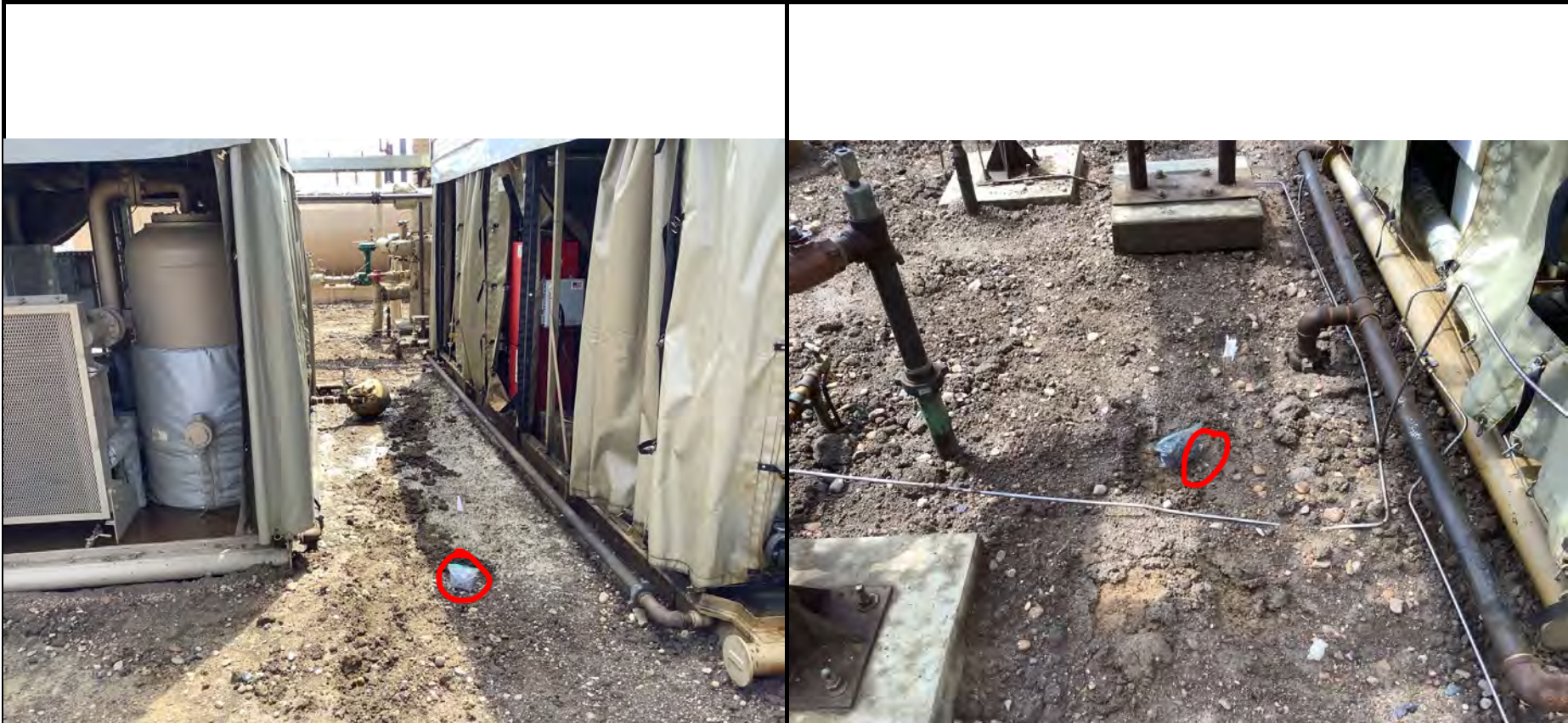
**Photographic Log**

**Equipment ID:**GS04

**Equipment Type:**
**Material:**
**Volume:**
**Contents:**
**Notes/Conditions:**
**Equipment ID:**GS05

**Equipment Type:**
**Material:**
**Volume:**
**Contents:**
**Notes/Conditions:**

Photographic Log



<b>Equipment ID:</b> GS06		<b>Equipment Type:</b>			<b>Equipment ID:</b> GS07		<b>Equipment Type:</b>		
<b>Material:</b>	<b>Volume:</b>	<b>Contents:</b>			<b>Material:</b>	<b>Volume:</b>	<b>Contents:</b>		
<b>Notes/Conditions:</b>					<b>Notes/Conditions:</b>				

**Photographic Log**


<b>Equipment ID:</b> GS08		<b>Equipment Type:</b>	
<b>Material:</b>	<b>Volume:</b>	<b>Contents:</b>	
<b>Notes/Conditions:</b>			

<b>Equipment ID:</b> GS09		<b>Equipment Type:</b>	
<b>Material:</b>	<b>Volume:</b>	<b>Contents:</b>	
<b>Notes/Conditions:</b>			

Photographic Log



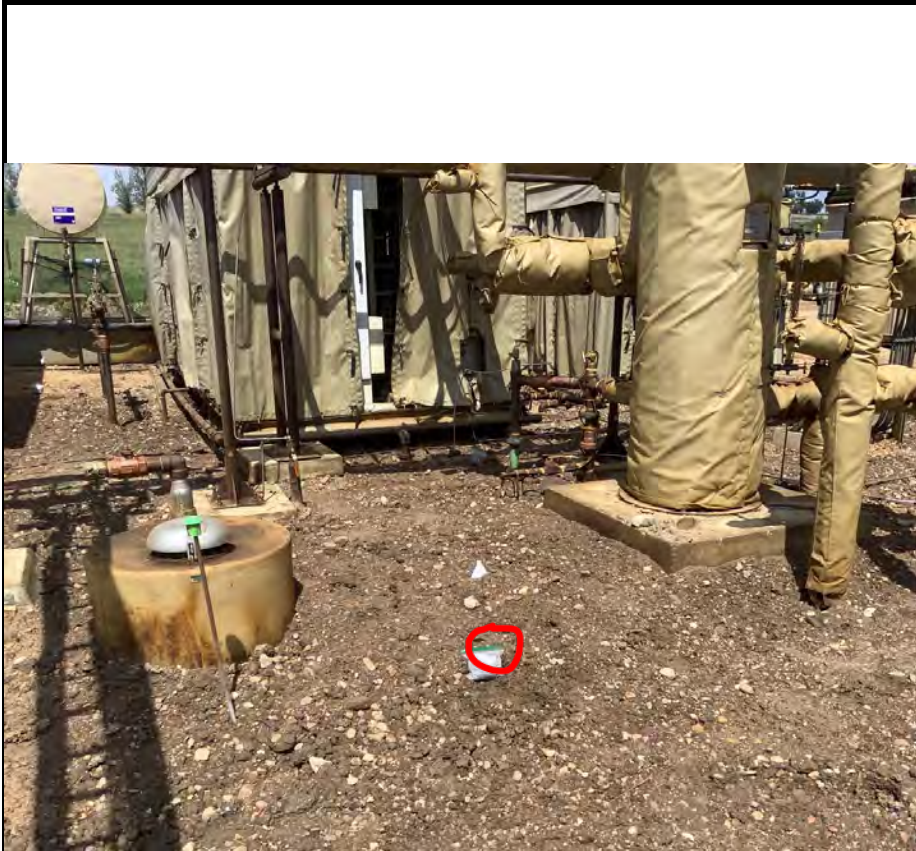
<b>Equipment ID:</b> GS10	<b>Equipment Type:</b>	
<b>Material:</b>	<b>Volume:</b>	<b>Contents:</b>

<b>Equipment ID:</b> GS11	<b>Equipment Type:</b>	
<b>Material:</b>	<b>Volume:</b>	<b>Contents:</b>

**Notes/Conditions:**

**Notes/Conditions:**

### Photographic Log



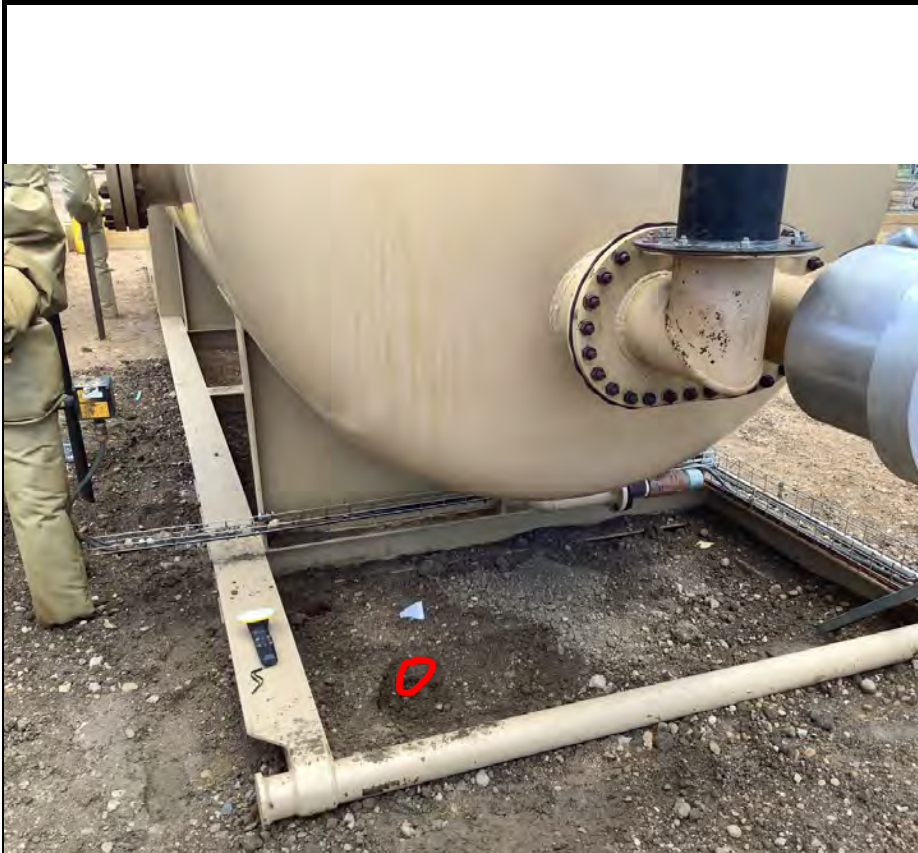
<b>Equipment ID:</b> GS12		<b>Equipment Type:</b>	
<b>Material:</b>	<b>Volume:</b>	<b>Contents:</b>	
<b>Notes/Conditions:</b>			

<b>Equipment ID:</b> SS01		<b>Equipment Type:</b>	
<b>Material:</b>	<b>Volume:</b>	<b>Contents:</b>	
<b>Notes/Conditions:</b> Waste characterization sample from removed and piled source material			



## TANK BATTERY DECOMMISSIONING FORM

<b>SITE NAME:</b> Brant HZ Facility							<b>DATE:</b> 6/2/2022	<b>REM. PROJECT #:</b>	<b>WEATHER:</b> Sunny 70's
<b>SITE DIRECTIONS:</b> From HWY 7 and Riverdale Road travel south 3/10 of a mile to location							<b>CLIENT:</b> PDC - Cheyenne		
<b>LEGALS AND LAT/LONG:</b>							<b>TASMAN PERSONNEL:</b> Sam Anderson		
<b>SOIL TYPES:</b> Clayey Sand							<b>SURFACE GRADIENT:</b> Southeast		
SOIL SAMPLING							FACILITY INFRASTRUCTURE		
Date/Time	Soil Sample ID	PID (ppm)	Visual	Olfactory	Photo?	Grab or Lab Sample?	EQUIPMENT		Quantity
							Above Ground Storage Tank (AST)		
6/2/2022 13:15	BKG01 @ 0-6"	0.0	Organic Content	Organic Odor	Yes	Lab	Buried or Partially Buried Vessel		
6/2/2022 13:20	BKG02 @ 0-6"	0.1	Organic Content	Organic Odor	Yes	Lab	Separator		
6/2/2022 13:25	BKG03 @ 0-6"	0.0	Organic Content	Organic Odor	Yes	Lab	Emission Control Device (ECD)		
							Dump Line		
							Wellhead		
							Flowline		
							Other:		
							Soil Loads Removed		
							IMPACTED SOIL IDENTIFIED?		
							ESTIMATED VOLUME OF IMPACTS:		
							Date	Number	CY
							Total Removed		0      0
							Disposal Facility:		
							Groundwater Recovery		
							DATE GW ENCOUNTERED:		DEPTH:
							GROUNDWATER IN CONTACT WITH IMPACTED SOIL?		
							LNAPL OR SHEEN OBSERVED ON GW?		
GROUNDWATER SAMPLING							Date	BBLS	
Date/Time	Groundwater Sample ID	Depth Collected	Turbid?	Sheen?	Odor?	Photo?			
							Total Removed		0
							Disposal Facility:		

**Photographic Log**


<b>Equipment ID:</b> SS02		<b>Equipment Type:</b>	
<b>Material:</b>	<b>Volume:</b>	<b>Contents:</b>	
<b>Notes/Conditions:</b> Under release point			

<b>Equipment ID:</b> SS03		<b>Equipment Type:</b>	
<b>Material:</b>	<b>Volume:</b>	<b>Contents:</b>	
<b>Notes/Conditions:</b>			

Photographic Log



Equipment ID:SS04		Equipment Type:	
Material:	Volume:	Contents:	
Notes/Conditions:			

Equipment ID:SS05		Equipment Type:	
Material:	Volume:	Contents:	
Notes/Conditions:			

## Photographic Log



<b>Equipment ID:</b> SS06		<b>Equipment Type:</b>	
<b>Material:</b>	<b>Volume:</b>	<b>Contents:</b>	
<b>Notes/Conditions:</b>			

<b>Equipment ID:</b> SS07		<b>Equipment Type:</b>	
<b>Material:</b>	<b>Volume:</b>	<b>Contents:</b>	
<b>Notes/Conditions:</b>			

**Photographic Log**


<b>Equipment ID:</b> SS08		<b>Equipment Type:</b>	
<b>Material:</b>	<b>Volume:</b>	<b>Contents:</b>	
<b>Notes/Conditions:</b>			

<b>Equipment ID:</b> BK01		<b>Equipment Type:</b>	
<b>Material:</b>	<b>Volume:</b>	<b>Contents:</b>	
<b>Notes/Conditions:</b>			

**Photographic Log**


<b>Equipment ID:</b> BKG02		<b>Equipment Type:</b>		<b>Equipment ID:</b> BKG03		<b>Equipment Type:</b>	
<b>Material:</b>	<b>Volume:</b>	<b>Contents:</b>		<b>Material:</b>	<b>Volume:</b>	<b>Contents:</b>	
<b>Notes/Conditions:</b>				<b>Notes/Conditions:</b>			

**Photographic Log**


<b>Equipment ID:</b>		<b>Equipment Type:</b>	
<b>Material:</b>	<b>Volume:</b>	<b>Contents:</b>	
<b>Notes/Conditions:</b> Cleaning crew			

<b>Equipment ID:</b>		<b>Equipment Type:</b>	
<b>Material:</b>	<b>Volume:</b>	<b>Contents:</b>	
<b>Notes/Conditions:</b>			

## **PDC Provided Photographs**



Failed Gasket



Released Fluid  
Within Secondary  
Containment



Released Fluid  
Within Secondary  
Containment



Released Fluid  
Within Secondary  
Containment



Released Fluid  
Within Secondary  
Containment



Released Fluid  
Within Secondary  
Containment



Released Fluid  
Within Secondary  
Containment