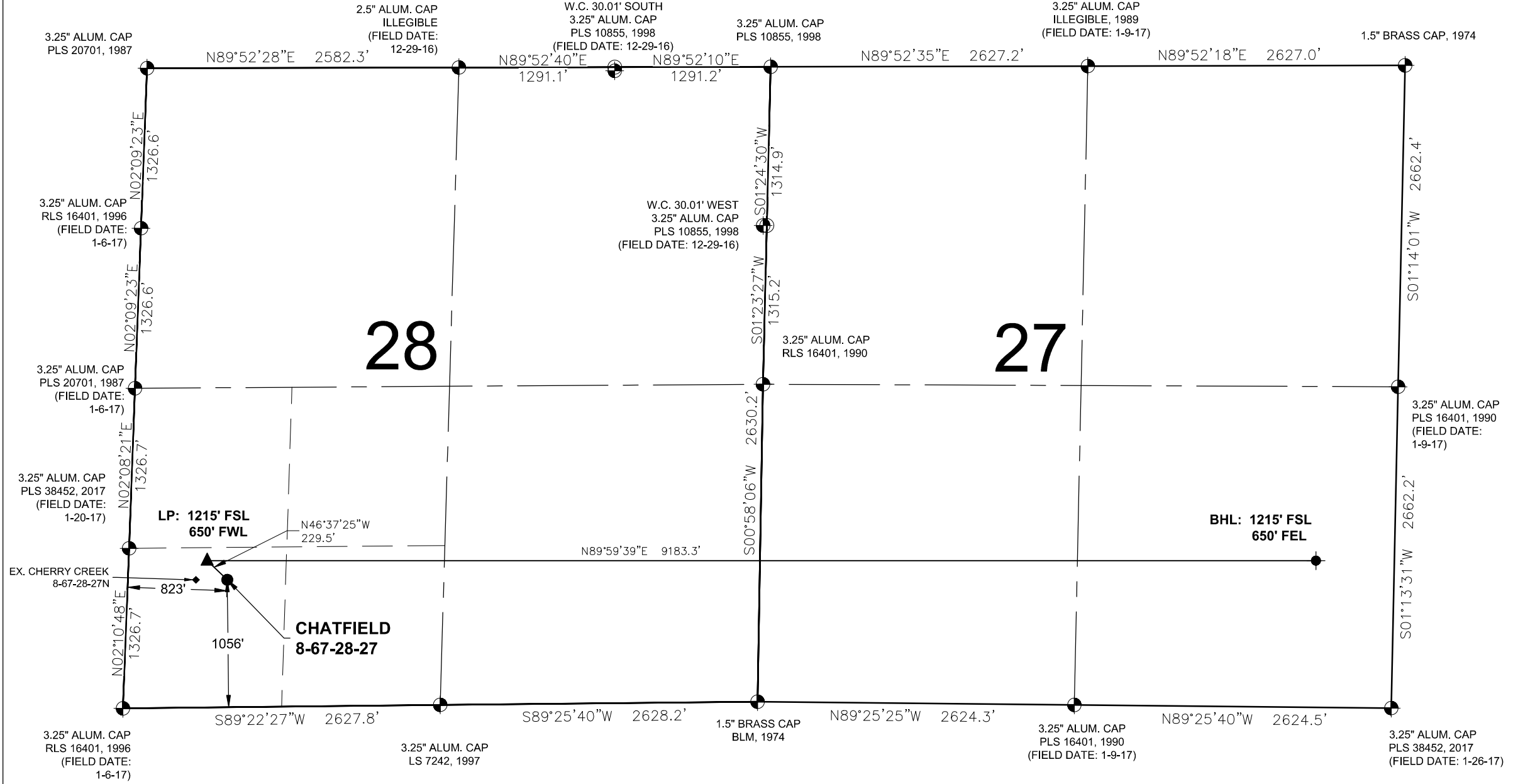


# CHATFIELD 8-67-28-27 WELL LOCATION EXHIBIT



- NOTES:**
1. THIS FIELD SURVEY CONFORMS TO THE MINIMUM STANDARDS SET BY THE COGCC, RULE NO. 215
  2. ALL DISTANCES AND BEARINGS SHOWN HEREON ARE GROUND VALUES AS GPS MEASURED IN THE FIELD, WITH TIES TO WELLS MEASURED PERPENDICULAR TO LINES SHOWN HEREON. THIS LOW DISTORTION PROJECTION (LDP) IS BASED ON THE NORTH AMERICAN DATUM OF 1983, U.S. SURVEY FOOT WITH A LATITUDE ORIGIN OF 40.654362°N, A CENTRAL MERIDIAN LONGITUDE OF 104.887025°W, AND A SCALE FACTOR ON THE CENTRAL MERIDIAN OF 1.000253 (EXACT). THE LDP BASIS OF BEARINGS IS GEODETIC NORTH.
  3. FIELD VERIFICATION OF MONUMENTS COMPLETED WITHIN 1 YEAR OF SIGNATURE DATE, UNLESS OTHERWISE NOTED.

**LEGEND**

|                         |                    |
|-------------------------|--------------------|
| ● = EXISTING MONUMENT   | ▲ = LANDING POINT  |
| ○ = CALCULATED POSITION | ◆ = EXISTING WELL  |
| ● = PROPOSED WELL       | LP = LANDING POINT |
| ◆ = BOTTOM HOLE         | BHL = BOTTOM HOLE  |

I, KEVIN J. MARTIN, A LICENSED PROFESSIONAL LAND SURVEYOR IN THE STATE OF COLORADO, DO HEREBY STATE TO **ENERPLUS RESOURCES (USA) CORPORATION** THAT THE WELL LOCATION EXHIBIT SHOWN HEREON WAS PREPARED BY ME OR UNDER MY DIRECT SUPERVISION AND THE DRAWING SHOWN HEREON ACCURATELY DEPICTS THE PROPOSED LOCATION OF THE WELL. THIS EXHIBIT MEETS THE REQUIREMENTS OF A GIS LAND POSITION AS DEFINED BY SECTION 38-51-109.3 C.R.S. AND AS SUCH PER SECTION 38-51-109.3 C.R.S. CANNOT BE RELIED UPON TO DETERMINE OWNERSHIP.



KEVIN J. MARTIN, PLS 38580  
 COLORADO LICENSED PROFESSIONAL LAND SURVEYOR  
 FOR AND ON BEHALF OF P.F.S., LLC  
 d.b.a. ASCENT GEOMATICS SOLUTIONS

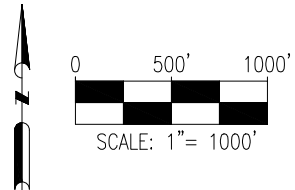
**WELL CHATFIELD 8-67-28-27 TO BE  
 LOCATED 1056' FSL & 823' FWL**

**WELL BORE COORDINATES  
 (NAD83)**

|  |   |   |
|--|---|---|
| <b>SURFACE LOCATION:</b><br>GROUND ELEVATION=5173'<br>LATITUDE:40.628235°N<br>LONGITUDE:104.904271°W | <b>LANDING POINT:</b><br>LATITUDE:40.628667°N<br>LONGITUDE:104.904872°W | <b>BOTTOM HOLE:</b><br>LATITUDE:40.628670°N<br>LONGITUDE:104.871797°W |
|--|---|---|

**WELL NOTES:**  
 BH LOCATION PROVIDED BY CLIENT.  
 LAND SURFACE USE - IMPROVED PASTURE  
 EX. CHERRY CREEK 8-67-28-27N IS 259' W AT 1058' FSL & 564' FWL.  
 SEE LOCATION DRAWING FOR ADDITIONAL IMPROVEMENTS  
 WITHIN 500'

PDOP=1.8  
 GPS OPERATOR: AARON RIVERA



8620 Wolff Court  
 Westminster, CO 80031  
 (303) 928-7128  
 www.ascentgeomatics.com

|                           |                 |
|---------------------------|-----------------|
| FIELD DATE:<br>11-04-18   |                 |
| DRAWING DATE:<br>04-12-22 |                 |
| BY:<br>JEB                | CHECKED:<br>IJM |

|  |
|--|
| WELL NAME:<br>CHATFIELD 8-67-28-27   |
| SURFACE LOCATION:<br>SW 1/4 SW 1/4 SEC. 28, T8N, R67W, 6TH P.M.<br>WELD COUNTY, COLORADO |

PREPARED FOR: