



Bison Oil & Gas III PLUG & ABANDON POST JOB REPORT

Alice Nay (OWP) 1-A 05-123-05662
S:14 T:9N R:58W Weld CO

CallSheet #: 81039
Proposal #: 59276



PLUG & ABANDON Post Job Report

Attention: Jake Van Bramer | (720) 644-6997 | jvanbramer@bisonog.com
Bison Oil & Gas III
518 17th St., Suite 1800 | Denver, CO 80202

Dear Jake Van Bramer,

Thank you for the opportunity to provide cementing services on this well. American Cementing strives to achieve complete customer satisfaction. If you have any questions regarding the services or data provided, please contact American Cementing at any time.

Sincerely,

Jason Creel

Field Engineer Lead | (307) 256-0306 | jason.creel@americancementing.com

Field Office 1716 E Allison Rd, Cheyenne, WY 82007
Phone: (307) 414-0049

Job Details & Summary

Geometry

Type	Function	OD (in)	ID (in)	Weight (lb/ft)	Top (ft)	Bottom (ft)	Excess (%)
Casing	Outer	10.75	10.192	32.75	0	200	0
Open Hole	Outer		8.875		200	3710	0
Tubing	Inner	2.875	2.441	6.4	0	3710	0

Equipment / People

Unit Type	Unit
Cement Trailer Float	CTF-193
Cement Trailer Float	CTF-003
Cement Utility Float	CUF(FIF)-159
Cement Pump Float	CPF-183

Timing

Event	Date/Time
Call Out	4/14/2022 09:00
Depart Facility	4/14/2022 11:00
On Location	4/14/2022 13:00
Rig Up Iron	4/14/2022 13:20
Job Started	4/14/2022 15:20
Job Completed	4/15/2022 01:15
Rig Down Iron	4/15/2022 01:20
Depart Location	4/15/2022 02:00

General Job Information

Metrics	Value
Well Fluid Density	9.5 lb/gal
Well Fluid Type	WBM
Rig Circulation Vol	300 bbls
Rig Circulation Time	1 hours
Calculated Displacement	19.3 bbls
Actual Displacement	19.3 bbls
Total Spacer to Surface	n/a bbls
Total CMT to Surface	7 bbls
Well Topped Out	Yes
Top Out Volume	4 bbls

Job Details

Metrics	Value
Flare Prior to Job	No
Flare Prior to Job	0 units
Flare During Job	No
Flare During Job	0 units
Flare at End of Job	No
Flare at End of Job	0 units
Well Full Prior to Job	Yes
Well Fluid Density Into Well	9.5 lb/gal
Well Fluid Density Out of Well	9.5 lb/gal

Job Details (cont.)

Metrics	Value
BHCT	166 °F
BHST	132 °F

Water Analysis

Metrics	Value	Recommended
Water Source	None	
Temperature	60 °F	50-80 °F
pH Level	7	5.5-8.5
Chlorides	1500 mg/L	0-3000 mg/L
Total Alkalinity	500	0-1000
Total Hardness	200 mg/L	0-500 mg/L
Carbonates	50 mg/L	0-100 mg/L
Sulfates	1200 mg/L	0-1500 mg/L
Potassium	1700 mg/L	0-3000 mg/L
Iron	100 mg/L	0-300 mg/L

Circulation

Lost Circulation Experienced
No

Job Execution Information

Fluid	Product	Function	Density (lb/gal)	Yield (ft ³ /sk)	Water Rq. (gal/sk)	Water Rq. (gal/bbl)	Volume (sk)	Volume (bbl)	Designed Top (ft)
1	Flush Ahead Plug-1	Flush	8.34			42.00		20.00	0
2	Plug-1: Top of Prod Casing	Plug	15.80	1.16	5.01		50.00	10.37	0
3	Plug-1 Displacement	Displacement	8.34			42.00		20.00	0
4	Flush Ahead Plug-2	Flush	8.34			42.00		20.00	0
5	Plug-2: Pierre (1500' - 1650')	Plug	15.80	1.16	5.01		120.00	24.89	0
6	Plug-2 Displacement	Displacement	8.34			42.00		8.00	0
7	Flush Ahead Plug-3	Flush	8.34			42.00		20.00	0
8	Plug-3: Surface (500' - 0')	Plug	15.80	1.16	5.01		375.00	77.78	0
9	Plug-3 Displacement	DisplacementFinal	8.34			42.00		1.00	0

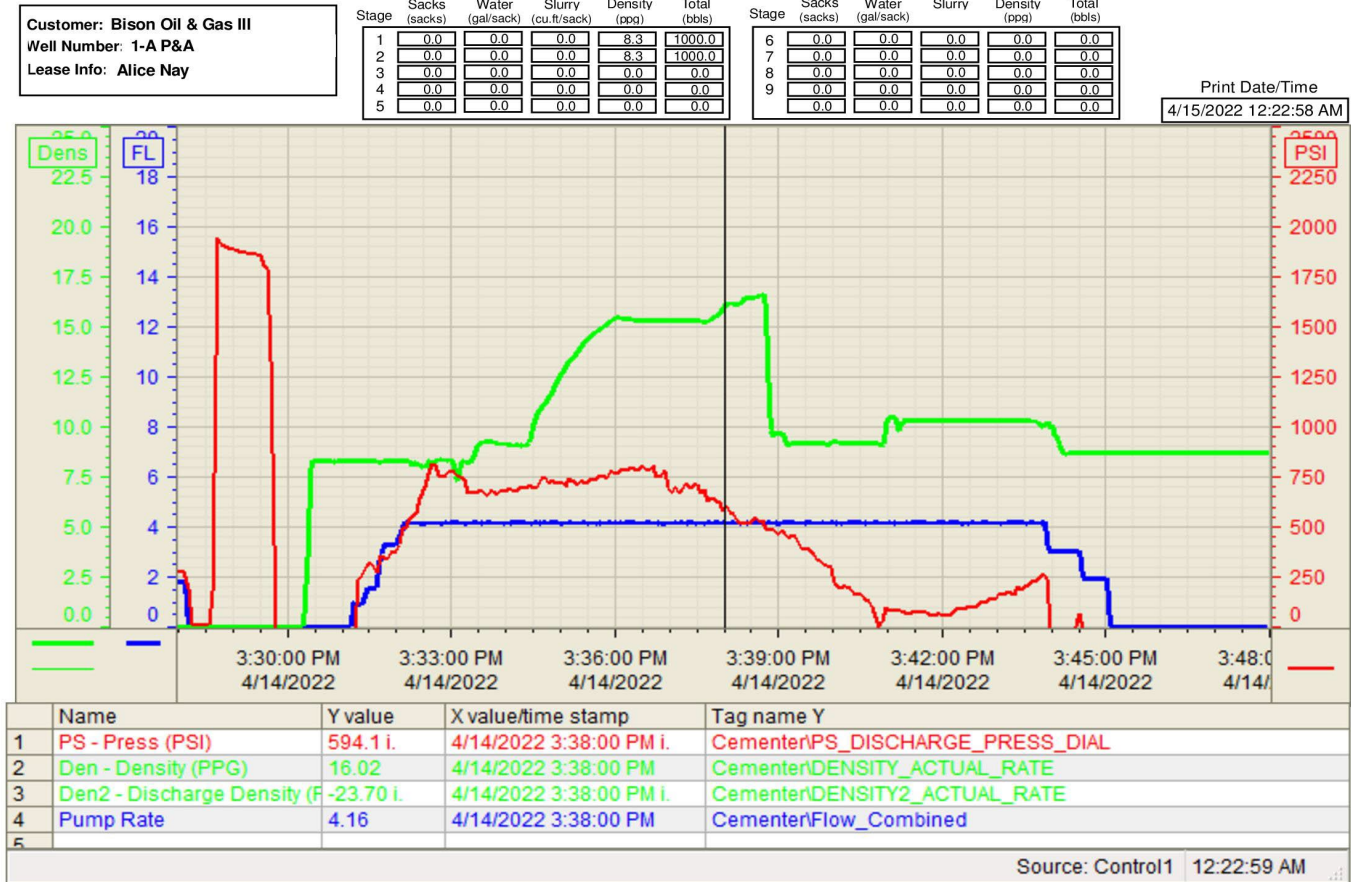
Job Fluid Details

Fluid	Type	Fluid	Product	Function	Conc.	Uom
2	Plug	Plug-1: Top of Prod Casing	CLASS G	Cement	100.00	%
2	Plug	Plug-1: Top of Prod Casing	A-7P	Accelerator	2.00	%BWOB
5	Plug	Plug-2: Pierre (1500' - 1650')	CLASS G	Cement	100.00	%
5	Plug	Plug-2: Pierre (1500' - 1650')	A-7P	Accelerator	2.00	%BWOB
8	Plug	Plug-3: Surface (500' - 0')	CLASS G	Cement	100.00	%
8	Plug	Plug-3: Surface (500' - 0')	A-7P	Accelerator	2.00	%BWOB

Job Logs

Line	Event	Date (MM/DD/YY)	Time (HH:MM)	Density (lb/gal)	Pump Rate (bpm)	Pump Volume (bbls)	Pipe Pressure (psi)	Comment
1	call out	4/14/2022	09:00					crew called out to location
2	on location	4/14/2022	13:00					crew on location, spot equipment
3	rig up	4/14/2022	13:20					rig up equipment
4	safety meeting	4/14/2022	15:00					safety meeting with company man and rig crew
5	pressure test	4/14/2022	15:20	8.34	0.2	0.2	2000	pressure tet lines to 2000 psi
6	first plug	4/14/2022	15:28	15.8	4	10.4	1000	first plug: @ 3710' / 50 sk plug @ 15.8 # , pump 20 bbl water, 10.4 bbl slurry, 1.5 bbl water behind and displace with 19.3 bbl mud / yield 1.16 / mix water 5 / wet samples taken and weight verified
7	pulling pipe	4/14/2022	15:40					pull pipe out of hole
8	pressure test	4/14/2022	17:00	8.34	0.2	0.2	2000	pressure test lines to 2000 psi
9	second plug	4/14/2022	17:08	15.8	4	26.8	420	second plug: @ 1650' / 130 sk plug @ 15.8 # w/2%CC / pump 20 bbl water ahead, 26.8 bbl slurry, 1.5 bbl behind and 6.3 bbl mud displacement / yield 1.16 / mix water 5 / wet samples taken and weight verified,
10	pulling pipe	4/14/2022	17:32					pull pipe out, and circulate
11	tag plug	4/14/2022	21:50					tag plug at 1402'
12	pressure test	4/14/2022	22:50	8.34	0.2	0.2	3000	pressure test lines to 3000 psi
13	surface plug	4/14/2022	22:58	15.8	4	77.8	150	surface plug: from 519' / 375 sk / 77.8 bbl slurry 3 %CC / @ 15.8 # / yield 1.16 / mix water 5 / wet samples taken and weight verified / bring 7 bbl back to pits
14	pulling pipe	4/14/2022	23:35					pulling pipe out of hole and rig down BOP
15	tap out	4/15/2022	01:00	15.8	2	4	10	tap out : take 4 bbl slurry 3 %CC / 20 sk / at 15.8 #
16	rig down	4/15/2022	01:20					rig equipment down
17		4/15/2022	00:00					thanks

Pump Diagrams

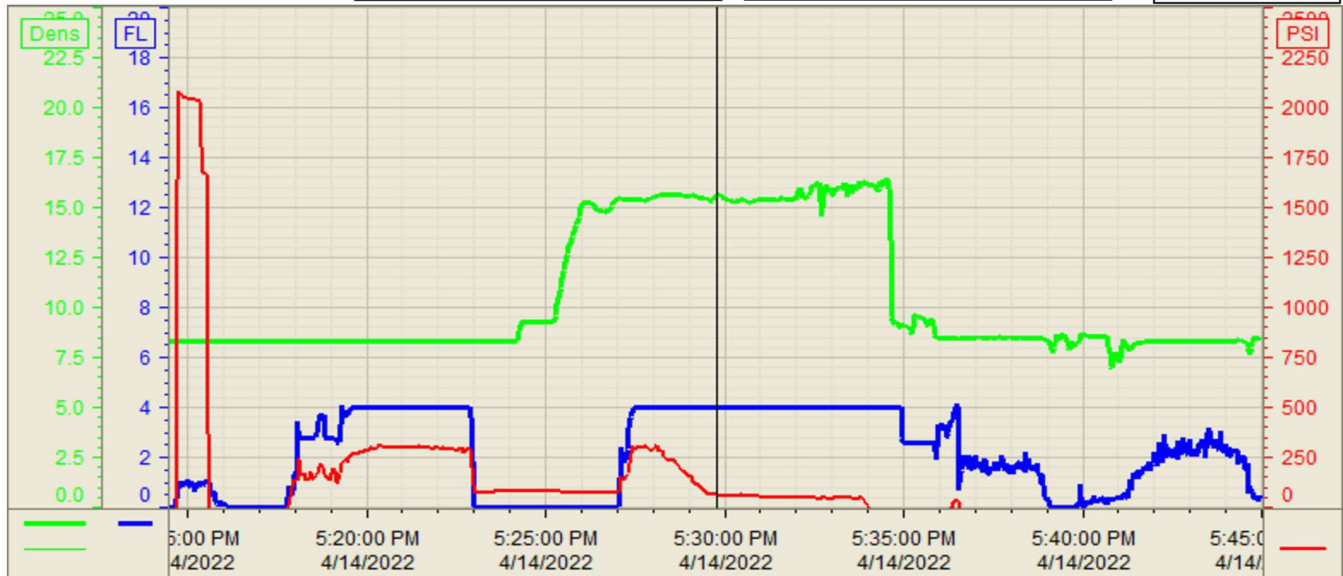


Customer: Bison Oil & Gas III
Well Number: 1-A P&A
Lease Info: Alice Nay

Stage	Sacks (sacks)	Water (gal/sack)	Slurry (cu.ft./sack)	Density (ppg)	Total (bbls)
1	0.0	0.0	0.0	8.3	1000.0
2	0.0	0.0	0.0	8.3	1000.0
3	0.0	0.0	0.0	0.0	0.0
4	0.0	0.0	0.0	0.0	0.0
5	0.0	0.0	0.0	0.0	0.0

Stage	Sacks (sacks)	Water (gal/sack)	Slurry	Density (ppg)	Total (bbls)
6	0.0	0.0	0.0	0.0	0.0
7	0.0	0.0	0.0	0.0	0.0
8	0.0	0.0	0.0	0.0	0.0
9	0.0	0.0	0.0	0.0	0.0
	0.0	0.0	0.0	0.0	0.0

Print Date/Time
4/15/2022 12:29:36 AM



	Name	Y value	X value/time stamp	Tag name Y
1	PS - Press (PSI)	62.7	4/14/2022 5:29:46 PM	CementerPS_DISCHARGE_PRESS_DIAL
2	Den - Density (PPG)	15.55	4/14/2022 5:29:46 PM	CementerDENSITY_ACTUAL_RATE
3	Den2 - Discharge Density (PPG)	-23.70	4/14/2022 5:29:46 PM	CementerDENSITY2_ACTUAL_RATE
4	Pump Rate	3.99	4/14/2022 5:29:46 PM	CementerFlow_Combined
5				

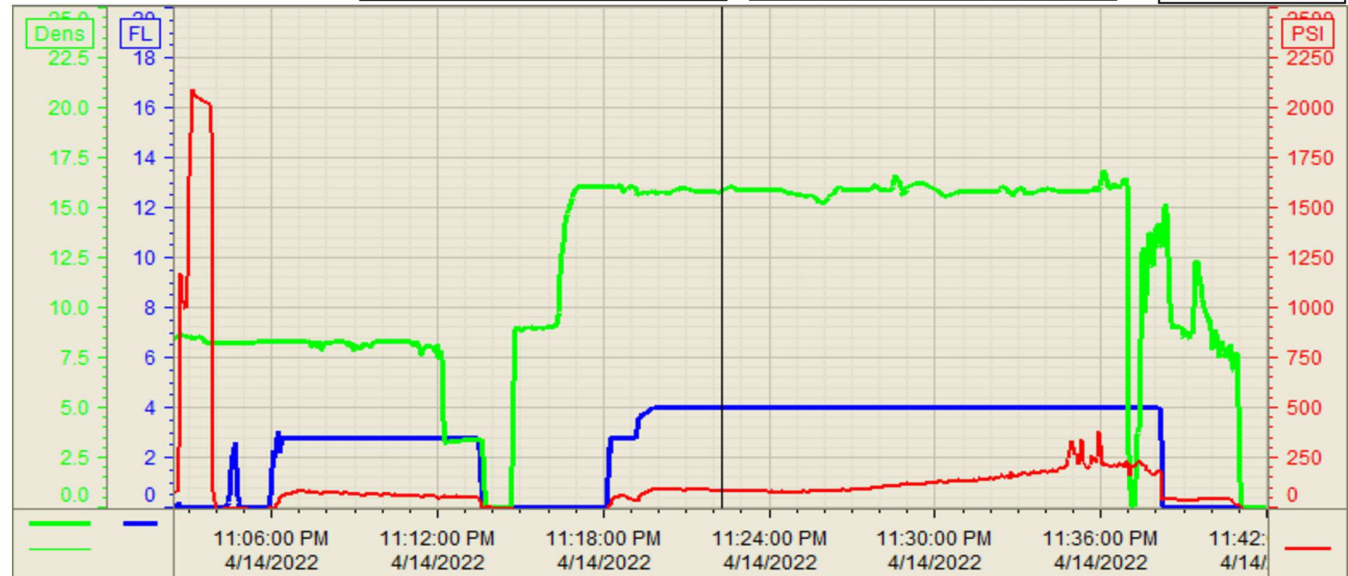
Source: Control1 12:29:35 AM

Customer: Bison Oil & Gas III
Well Number: 1-A P&A
Lease Info: Alice Nay

Stage	Sacks (sacks)	Water (gal/sack)	Slurry (cu.ft./sack)	Density (ppg)	Total (bbls)
1	0.0	0.0	0.0	8.3	1000.0
2	0.0	0.0	0.0	8.3	1000.0
3	0.0	0.0	0.0	0.0	0.0
4	0.0	0.0	0.0	0.0	0.0
5	0.0	0.0	0.0	0.0	0.0

Stage	Sacks (sacks)	Water (gal/sack)	Slurry	Density (ppg)	Total (bbls)
6	0.0	0.0	0.0	0.0	0.0
7	0.0	0.0	0.0	0.0	0.0
8	0.0	0.0	0.0	0.0	0.0
9	0.0	0.0	0.0	0.0	0.0

Print Date/Time
4/15/2022 12:31:24 AM



	Name	Y value	X value/time stamp	Tag name Y
1	PS - Press (PSI)	81.9 i.	4/14/2022 11:22:16 PM i.	CementerPS_DISCHARGE_PRESS_DIAL
2	Den - Density (PPG)	15.80	4/14/2022 11:22:16 PM	CementerDENSITY_ACTUAL_RATE
3	Den2 - Discharge Density (PPG)	23.70 i.	4/14/2022 11:22:16 PM i.	CementerDENSITY2_ACTUAL_RATE
4	Pump Rate	4.01	4/14/2022 11:22:16 PM	CementerFlow_Combined
5				

Source: Control1 12:31:24 AM