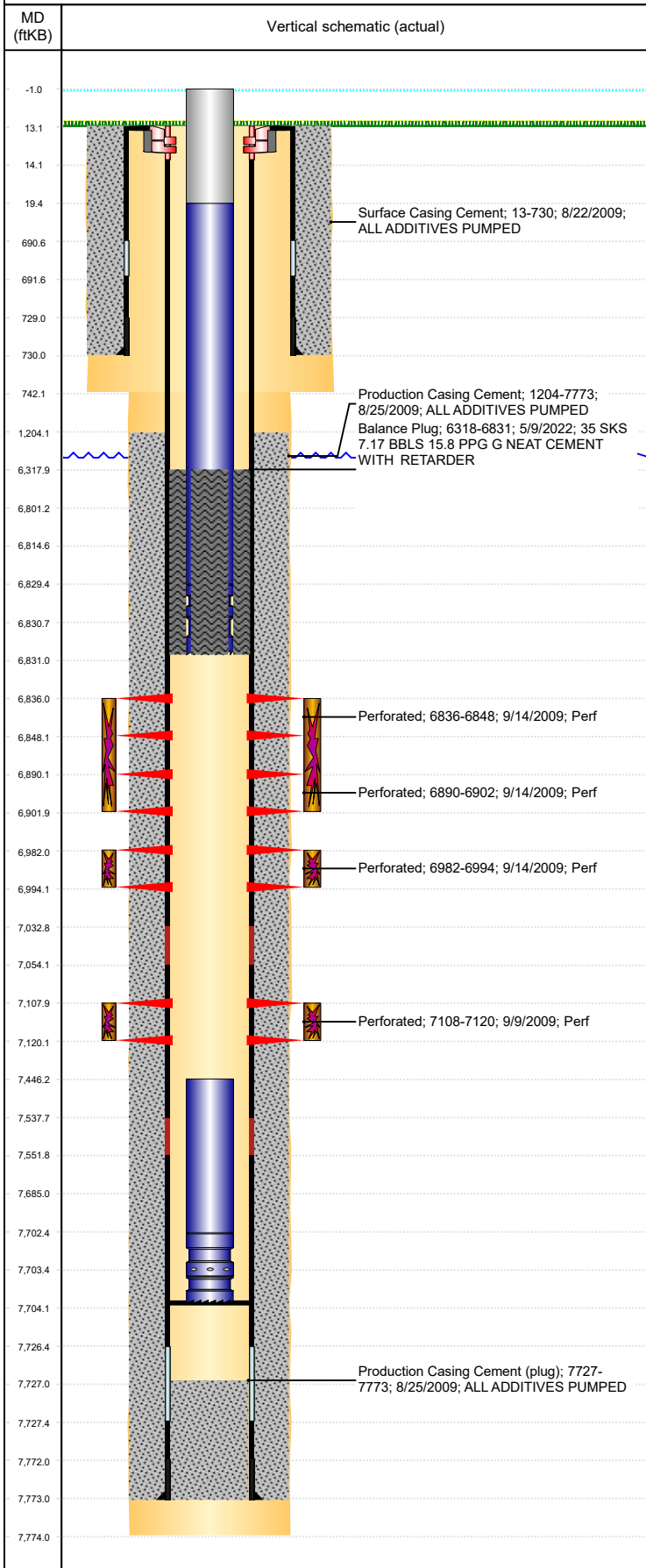




P&A Wellbore For State

Well Name: STROH H12-18

Land, Original Hole, 6/1/2022 11:54:03 AM



Well Header

Surface UWI 0512330488	Business Unit Rockies	Gov Auth Dist	Prod Tree Loc Land
Orig. KB to Gnd (ft) 13.00	Original Spud Date 8/22/2009	Abandon Date	Well Sub-Status TA
High... N			

Comment
318Ae LOCATION!

Surface Location (Congressional)

Qtr 3 NE	Qtr 4 NW	Section 12	Twonshp 3	Twonsh... N	Range 65	Rng E/... W	Latitude (°) 40.24373456 3	Longitude (°) -104.612001638
-------------	-------------	---------------	--------------	----------------	-------------	----------------	----------------------------------	---------------------------------

Wellbore Sections

Section Des	Hole Size (in)	Act Top (ftKB)	Act Btm (ftKB)
SURFACE	12 1/4	13.0	742.0
PRODUCTION	7 7/8	742.0	7,774.0

Casing Strings

Csg Des	Run Date	OD (in)	Wt/Len (lb/ft)	Grade	Top Depth (MD) (ftKB)	Set Depth (MD) (ftKB)
Surface	8/22/2009	8 5/8	24.00	J-55	13	730
Production Casing	8/25/2009	4 1/2	11.60	PS-80	13	7773

Cement

Des	Start Date	Top (ftKB)	Btm (ftKB)
Surface Casing Cement	8/22/2009	13.0	730.0
Production Casing Cement	8/25/2009	1,204.0	7,773.0
Balance Plug	5/9/2022	6,318.0	6,831.0

Zone Statuses

Zone Name	Status Date	Status	Fluid Type	Job	Prod Method
CODELL	9/16/2009	PR	Gas	DRILLING/COMPLETION - ORIGINAL, 8/21/2009...	
CODELL	5/9/2022	TA	Gas		
NIOBRARA	9/16/2009	PR	Gas	DRILLING/COMPLETION - ORIGINAL, 8/21/2009...	
NIOBRARA	5/9/2022	TA	Gas		
J SAND	5/9/2022	TA	Gas		

Perforation Data

Linked Zone	Explosive Type	Entered Shot Total	Top (ftKB)	Btm (ftKB)	Date
NIOBRARA, Original Hole		24	6,836.0	6,848.0	9/14/2009
NIOBRARA, Original Hole		24	6,890.0	6,902.0	9/14/2009
NIOBRARA, Original Hole		24	6,982.0	6,994.0	9/14/2009
CODELL, Original Hole		48	7,108.0	7,120.0	9/9/2009

Stimulation Intervals

Zone	Start Date	Top (ftKB)	Btm (ftKB)
NIOBRARA, Original Hole	9/14/2009	6,836.0	6,902.0
NIOBRARA, Original Hole	9/14/2009	6,982.0	6,994.0
CODELL, Original Hole	9/14/2009	7,108.0	7,120.0

Other In Hole

Run Date	Des	Make	OD (in)	Top (ftKB)	Btm (ftKB)

Logs

Date	Type	Depth Top (MD) (ftKB)	Btm (ftKB)
8/25/2009	BORE HOLE VOLUME PLOT	727	7,749.0
8/25/2009	COMPENSATED SPECTRAL GAMMA RAY	6,123	7,723.0
8/25/2009	SPECTRAL DENSITY/Pe/DSN NEUTRON/SP/ARRAY COMPENSATED TRUE RESISTIVITY/6 ARM CALIPER	3,806	7,770.0
9/9/2009	CBL/CCL/GR	1,070	7,678.0

Plug Back Total Depths

Date	Type	Com	PBTD (ftKB)
4/19/2010	PLUG REMNANTS	DRILL 2 COMPOSITE PLUGS W/ VAREL ROCK BIT AND CHA...	7,720
12/1/2010	FILL	SLICKLINE TAGGED.	7,704