

CONFLUENCE RESOURCES



Location: COLORADO Slot: SLOT#05 BIGFOOT 11-11-1 (2355'FSL & 620'FWL,SEC.11)

Field: WELD COUNTY (NAD83, TRUE NORTH) Well: BIGFOOT 11-11-1

Facility: SEC.11-T04N-R63W Wellbore: BIGFOOT 11-11-1 PWB

Plot reference wellpath is BIGFOOT 11-11-1 PWP RevB.0

True vertical depths are referenced to Rig (23) (KB)

Reference wellpath measured depths are referenced to Rig (23) (KB)

Rig (23) (KB) to Mean Sea Level: 4639 feet

Mean Sea Level to Ground level (At Slot: SLOT#05 BIGFOOT 11-11-1 (2355'FSL & 620'FWL,SEC.11)) -4616 feet

Offset wellpath MDs are referenced to each path's default MD datum

Grid System: NAD83 / Lambert Colorado SP, Northern Zone (501), US feet

North Reference: True north

Scale: True distance

Coordinates are in feet referenced to Slot

Depths are in feet

Created by: painestr on 2022-04-26; Database: WellArchitectDB

Location Information

Facility Name				Grid East (US ft)	Grid North (US ft)	Latitude	Longitude
SEC.11-T04N-R63W				3303108.873	1363635.600	40°19'35.3280"N	104°24'46.1880"W
Slot	Local N (ft)	Local E (ft)		Grid East (US ft)	Grid North (US ft)	Latitude	Longitude
SLOT#05 BIGFOOT 11-11-1 (2355'FSL & 620'FWL,SEC.11)	-98.36	0.00		3303110.079	1363537.249	40°19'34.3560"N	104°24'46.1880"W
Rig (23) (KB) to Ground level (At Slot: SLOT#05 BIGFOOT 11-11-1 (2355'FSL & 620'FWL,SEC.11))				23ft			
Mean Sea Level to Ground level (At Slot: SLOT#05 BIGFOOT 11-11-1 (2355'FSL & 620'FWL,SEC.11))				-4616ft			
Rig (23) (KB) to Mean Sea Level				4639ft			

Hole and Casing Sections

Name	Start MD (ft)	End MD (ft)	Interval (ft)	Start TVD (ft)	End TVD (ft)	Start Local N (ft)	Start Local E (ft)	End Local N (ft)	End Local E (ft)	Wellbore
9.625in Casing Surface	23.00	1715.23	1692.23	23.00	1700.00	0.00	0.00	-129.46	-63.34	BIGFOOT 11-11-1 PWB

Survey Program

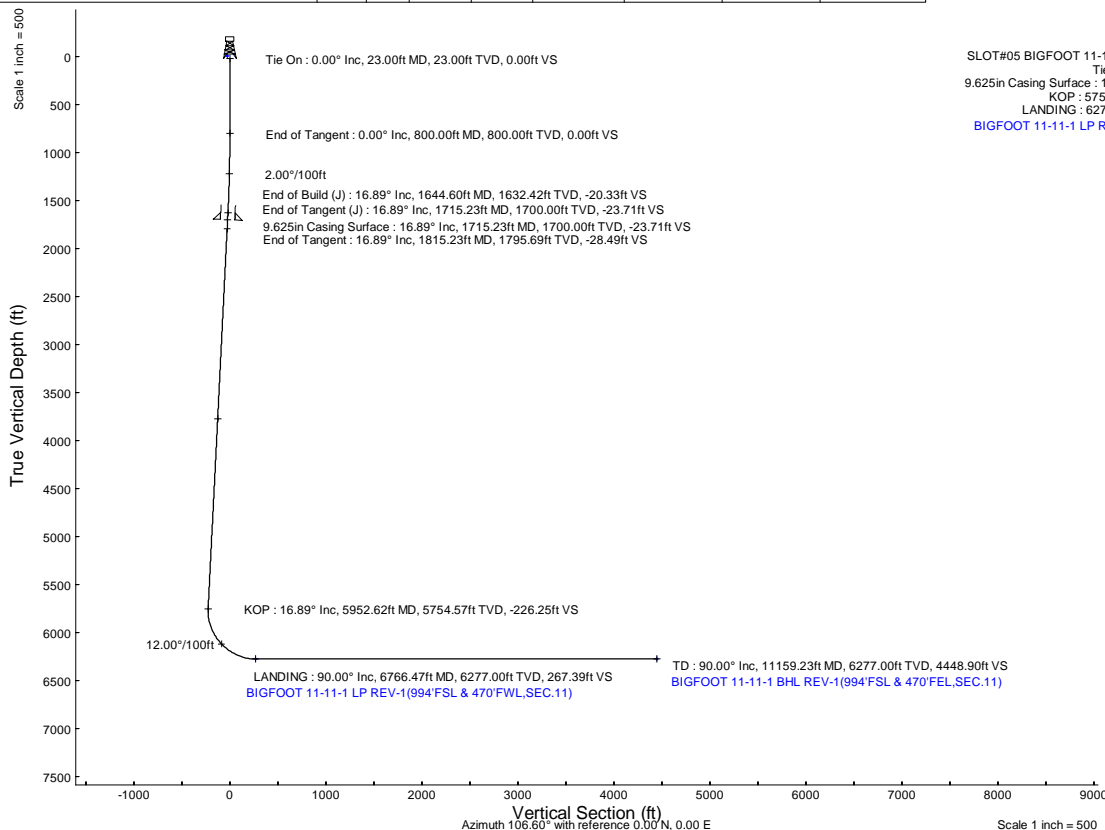
Start MD (ft)	End MD (ft)	Tool	Model	Log Name/Comment	Wellbore
23.00	1715.23	BH NavTrak (2019)	BH NavTrak (2019) (Axial)		BIGFOOT 11-11-1 PWB
1715.23	11159.23	BH AutoTrak Curve/xpress (2019)	BH AutoTrak Curve/xpress (2019) (Short spacing)		BIGFOOT 11-11-1 PWB

Bottom Hole Location

MD (ft)	Inc (°)	Az (°)	TVD (ft)	Local N (ft)	Local E (ft)	Grid East (US ft)	Grid North (US ft)	Latitude	Longitude
11159.23	90.000	88.760	6277.00	-1271.06	4263.47	3307388.62	1362318.60	40°19'21.7920"N	104°23'51.1440"W

Targets

Name	MD (ft)	TVD (ft)	Local N (ft)	Local E (ft)	Grid East (US ft)	Grid North (US ft)	Latitude	Longitude
SEC.11-T04N-R63W	N/A	-2.50	98.36	0.00	3303108.87	1363635.60	40°19'35.3280"N	104°24'46.1880"W
SEC.11-T04N-R63W 470' SETBACK	N/A	-2.50	98.36	0.00	3303108.87	1363635.60	40°19'35.3280"N	104°24'46.1880"W
BIGFOOT 11-11-1 BHL REV-1(994'FSL & 470'FEL,SEC.11)	11159.23	6277.00	-1271.06	4263.47	3307388.62	1362318.60	40°19'21.7920"N	104°23'51.1440"W
BIGFOOT 11-11-1 LP REV-1(994'FSL & 470'FWL,SEC.11)	6766.47	6277.00	-1366.15	-128.27	3302998.58	1362169.69	40°19'20.8560"N	104°24'47.8440"W



SLOT#05 BIGFOOT 11-11-1 (2355'FSL & 620'FWL,SEC.11)

Tie On : 23.00ft TVD, 0.00ft N, 0.00ft E

9.625in Casing Surface : 1700.00ft TVD, 129.46ft S, 63.34ft W

KOP : 5754.57ft TVD, 1235.46ft S, 604.41ft W

LANDING : 6277.00ft TVD, 1366.15ft S, 128.27ft W

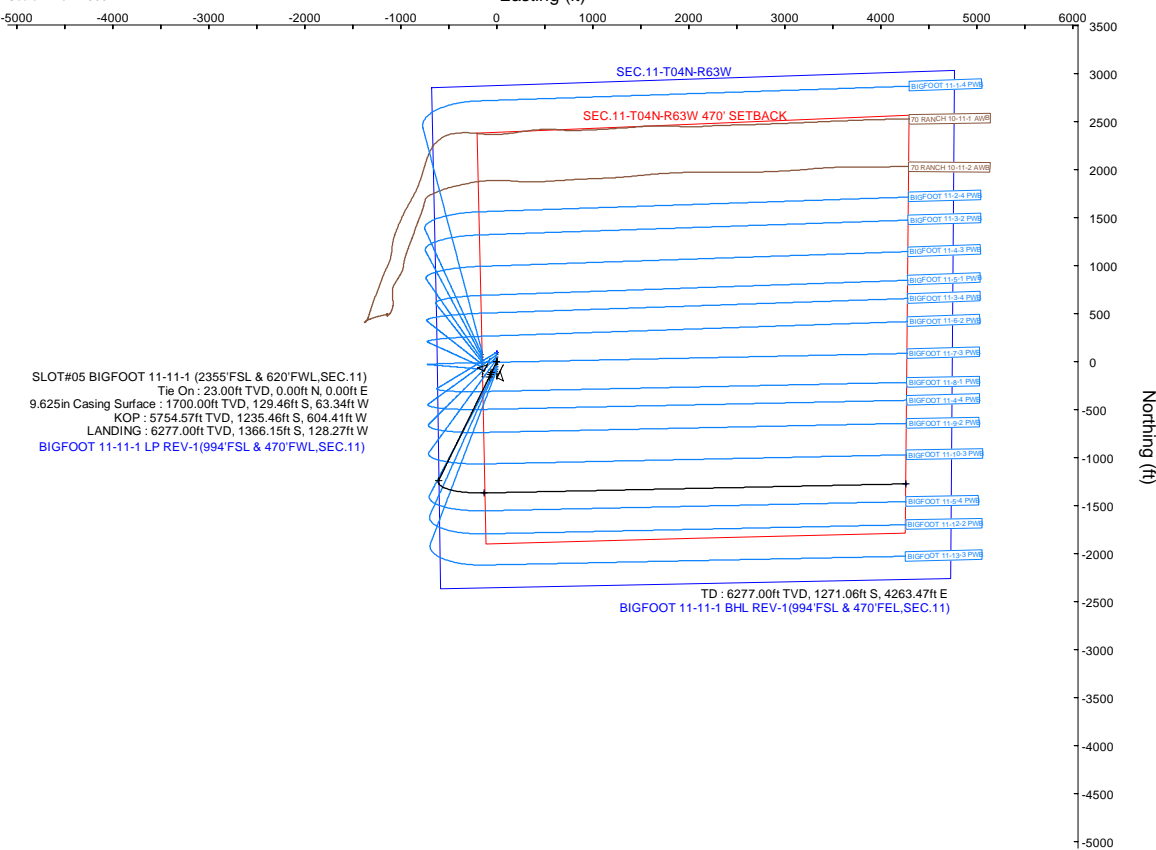
BIGFOOT 11-11-1 LP REV-1(994'FSL & 470'FWL,SEC.11)

Well Profile Data

Design Comment	MD (ft)	Inc (°)	Az (°)	TVD (ft)	Local N (ft)	Local E (ft)	DLS (°/100ft)	VS (ft)
Tie On	23.00	0.000	206.069	23.00	0.00	0.00	0.00	0.00
End of Tangent	800.00	0.000	206.069	800.00	0.00	0.00	0.00	0.00
End of Build (J)	1644.60	16.892	206.069	1632.42	-111.03	-54.32	2.00	-20.33
End of Tangent (J)	1715.23	16.892	206.069	1700.00	-129.46	-63.34	0.00	-23.71
End of Tangent	1815.23	16.892	206.069	1795.69	-155.56	-76.11	0.00	-28.49
KOP	5952.62	16.892	206.069	5754.57	-1235.46	-604.41	0.00	-226.25
LANDING	6766.47	90.000	88.760	6277.00	-1366.15	-128.27	12.00	267.39
TD	11159.23	90.000	88.760	6277.00	-1271.06	4263.47	0.00	4448.90

Scale 1 inch = 500

Easting (ft)



HOGM2022v4.0 (1900.0 to 2023.0) Dp: 66.72° Field: 51850.3 nT

Magnetic North is 7.76 degrees East of True North (at 4/12/2022)

To correct azimuth from Magnetic to True add 7.76 degrees



Planned Wellpath Report

BIGFOOT 11-11-1 PWP Rev-B.0

Page 1 of 6



REFERENCE WELLPATH IDENTIFICATION

Operator	CONFLUENCE RESOURCES	Well	BIGFOOT 11-11-1
Field	WELD COUNTY (NAD83, TRUE NORTH)	API/Legal	
Facility	SEC.11-T04N-R63W	Wellbore	BIGFOOT 11-11-1 PWB
Slot	SLOT#05 BIGFOOT 11-11-1 (2355'FSL & 620'FWL,SEC.11)		

REPORT SETUP INFORMATION

Projection System	NAD83 / Lambert Colorado SP, Northern Zone (501), US feet	Software System	WellArchitect® 6.0
North Reference	True	User	Painsetr
Scale	0.999958	Report Generated	4/26/2022 at 1:44:51 PM
Convergence at slot	0.70° East	Database	WellArchitectDB

WELLPATH LOCATION

	Local coordinates		Grid coordinates		Geographic coordinates	
	North[ft]	East[ft]	Easting[US ft]	Northing[US ft]	Latitude	Longitude
Slot Location	-98.36	0.00	3303110.08	1363537.25	40.3262100°	-104.4128300°
Facility Reference Pt			3303108.87	1363635.60	40.3264800°	-104.4128300°
Field Reference Pt			3230456.90	1245096.09	40.0032400°	-104.6773400°

WELLPATH DATUM

Calculation method	Minimum curvature	Rig (23') (KB) to Facility Vertical Datum	4639.00ft
Horizontal Reference Pt	Slot	Rig (23') (KB) to Mean Sea Level	4639.00ft
Vertical Reference Pt	Rig (23') (KB)	Rig (23') (KB) to Ground Level at Slot (SLOT#05 BIGFOOT 11-11-1 (2355'FSL & 620'FWL,SEC.11))	23.00ft
MD Reference Pt	Rig (23') (KB)	Section Origin	N 0.00, E 0.00 ft
Field Vertical Reference	Mean Sea Level	Section Azimuth	106.60°

Planned Wellpath Report

BIGFOOT 11-11-1 PWP Rev-B.0

Page 2 of 6

REFERENCE WELLPATH IDENTIFICATION

Operator	CONFLUENCE RESOURCES	Well	BIGFOOT 11-11-1
Field	WELD COUNTY (NAD83, TRUE NORTH)	API/Legal	
Facility	SEC.11-T04N-R63W	Wellbore	BIGFOOT 11-11-1 PWB
Slot	SLOT#05 BIGFOOT 11-11-1 (2355'FSL & 620'FWL,SEC.11)		

WELLPATH DATA (120 stations) † = interpolated, ‡ = extrapolated station

MD [ft]	Inclination [°]	Azimuth [°]	TVD [ft]	Vert Sect [ft]	North [ft]	East [ft]	Grid East [US ft]	Grid North [US ft]	Latitude	Longitude	DLS [°/100ft]	Comments
0.00†	0.000	206.069	0.00	0.00	0.00	0.00	3303110.08	1363537.25	40.3262100	-104.4128300	0.00	
23.00	0.000	206.069	23.00	0.00	0.00	0.00	3303110.08	1363537.25	40.3262100	-104.4128300	0.00	Tie On
123.00†	0.000	206.069	123.00	0.00	0.00	0.00	3303110.08	1363537.25	40.3262100	-104.4128300	0.00	
223.00†	0.000	206.069	223.00	0.00	0.00	0.00	3303110.08	1363537.25	40.3262100	-104.4128300	0.00	
323.00†	0.000	206.069	323.00	0.00	0.00	0.00	3303110.08	1363537.25	40.3262100	-104.4128300	0.00	
423.00†	0.000	206.069	423.00	0.00	0.00	0.00	3303110.08	1363537.25	40.3262100	-104.4128300	0.00	
523.00†	0.000	206.069	523.00	0.00	0.00	0.00	3303110.08	1363537.25	40.3262100	-104.4128300	0.00	
623.00†	0.000	206.069	623.00	0.00	0.00	0.00	3303110.08	1363537.25	40.3262100	-104.4128300	0.00	
723.00†	0.000	206.069	723.00	0.00	0.00	0.00	3303110.08	1363537.25	40.3262100	-104.4128300	0.00	
800.00	0.000	206.069	800.00	0.00	0.00	0.00	3303110.08	1363537.25	40.3262100	-104.4128300	0.00	End of Tangent
823.00†	0.460	206.069	823.00	-0.02	-0.08	-0.04	3303110.04	1363537.17	40.3262098	-104.4128301	2.00	
923.00†	2.460	206.069	922.96	-0.43	-2.37	-1.16	3303108.95	1363534.86	40.3262035	-104.4128342	2.00	
1023.00†	4.460	206.069	1022.77	-1.43	-7.79	-3.81	3303106.36	1363529.41	40.3261886	-104.4128437	2.00	
1123.00†	6.460	206.069	1122.32	-2.99	-16.34	-7.99	3303102.29	1363520.81	40.3261652	-104.4128587	2.00	
1223.00†	8.460	206.069	1221.46	-5.13	-28.00	-13.70	3303096.73	1363509.08	40.3261331	-104.4128791	2.00	
1323.00†	10.460	206.069	1320.10	-7.83	-42.76	-20.92	3303089.68	1363494.23	40.3260926	-104.4129050	2.00	
1423.00†	12.460	206.069	1418.10	-11.10	-60.61	-29.65	3303081.17	1363476.28	40.3260436	-104.4129363	2.00	
1523.00†	14.460	206.069	1515.35	-14.93	-81.52	-39.88	3303071.20	1363455.25	40.3259862	-104.4129730	2.00	
1623.00†	16.460	206.069	1611.73	-19.31	-105.46	-51.59	3303059.78	1363431.17	40.3259205	-104.4130150	2.00	
1644.60	16.892	206.069	1632.42	-20.33	-111.03	-54.32	3303057.13	1363425.57	40.3259052	-104.4130248	2.00	End of Build (J)
1715.23	16.892	206.069	1700.00	-23.71	-129.46	-63.34	3303048.34	1363407.02	40.3258546	-104.4130572	0.00	End of Tangent (J)
1723.00†	16.892	206.069	1707.44	-24.08	-131.49	-64.33	3303047.37	1363404.98	40.3258491	-104.4130607	0.00	
1815.23	16.892	206.069	1795.69	-28.49	-155.56	-76.11	3303035.89	1363380.77	40.3257830	-104.4131029	0.00	End of Tangent
1823.00†	16.892	206.069	1803.12	-28.86	-157.59	-77.10	3303034.92	1363378.73	40.3257774	-104.4131065	0.00	
1923.00†	16.892	206.069	1898.81	-33.64	-183.69	-89.87	3303022.47	1363352.48	40.3257058	-104.4131523	0.00	
2023.00†	16.892	206.069	1994.49	-38.42	-209.79	-102.64	3303010.03	1363326.22	40.3256341	-104.4131981	0.00	
2123.00†	16.892	206.069	2090.18	-43.20	-235.90	-115.41	3302997.58	1363299.97	40.3255625	-104.4132439	0.00	
2223.00†	16.892	206.069	2185.86	-47.98	-262.00	-128.17	3302985.13	1363273.71	40.3254908	-104.4132897	0.00	
2323.00†	16.892	206.069	2281.55	-52.76	-288.10	-140.94	3302972.68	1363247.46	40.3254192	-104.4133355	0.00	
2423.00†	16.892	206.069	2377.23	-57.54	-314.20	-153.71	3302960.24	1363221.20	40.3253475	-104.4133813	0.00	

Planned Wellpath Report

BIGFOOT 11-11-1 PWP Rev-B.0

Page 3 of 6

REFERENCE WELLPATH IDENTIFICATION

Operator	CONFLUENCE RESOURCES	Well	BIGFOOT 11-11-1
Field	WELD COUNTY (NAD83, TRUE NORTH)	API/Legal	
Facility	SEC.11-T04N-R63W	Wellbore	BIGFOOT 11-11-1 PWB
Slot	SLOT#05 BIGFOOT 11-11-1 (2355'FSL & 620'FWL,SEC.11)		

WELLPATH DATA (120 stations) † = interpolated, ‡ = extrapolated station

MD [ft]	Inclination [°]	Azimuth [°]	TVD [ft]	Vert Sect [ft]	North [ft]	East [ft]	Grid East [US ft]	Grid North [US ft]	Latitude	Longitude	DLS [°/100ft]	Comments
2523.00†	16.892	206.069	2472.92	-62.32	-340.30	-166.48	3302947.79	1363194.95	40.3252759	-104.4134271	0.00	
2623.00†	16.892	206.069	2568.60	-67.10	-366.40	-179.25	3302935.34	1363168.70	40.3252043	-104.4134729	0.00	
2723.00†	16.892	206.069	2664.29	-71.88	-392.50	-192.02	3302922.89	1363142.44	40.3251326	-104.4135187	0.00	
2823.00†	16.892	206.069	2759.97	-76.66	-418.60	-204.79	3302910.45	1363116.19	40.3250610	-104.4135645	0.00	
2923.00†	16.892	206.069	2855.66	-81.44	-444.70	-217.56	3302898.00	1363089.93	40.3249893	-104.4136103	0.00	
3023.00†	16.892	206.069	2951.35	-86.22	-470.80	-230.33	3302885.55	1363063.68	40.3249177	-104.4136560	0.00	
3123.00†	16.892	206.069	3047.03	-91.00	-496.90	-243.10	3302873.10	1363037.42	40.3248460	-104.4137018	0.00	
3223.00†	16.892	206.069	3142.72	-95.78	-523.00	-255.87	3302860.66	1363011.17	40.3247744	-104.4137476	0.00	
3323.00†	16.892	206.069	3238.40	-100.56	-549.10	-268.63	3302848.21	1362984.92	40.3247027	-104.4137934	0.00	
3423.00†	16.892	206.069	3334.09	-105.34	-575.21	-281.40	3302835.76	1362958.66	40.3246311	-104.4138392	0.00	
3523.00†	16.892	206.069	3429.77	-110.12	-601.31	-294.17	3302823.31	1362932.41	40.3245594	-104.4138850	0.00	
3623.00†	16.892	206.069	3525.46	-114.90	-627.41	-306.94	3302810.87	1362906.15	40.3244878	-104.4139308	0.00	
3723.00†	16.892	206.069	3621.14	-119.68	-653.51	-319.71	3302798.42	1362879.90	40.3244162	-104.4139766	0.00	
3823.00†	16.892	206.069	3716.83	-124.46	-679.61	-332.48	3302785.97	1362853.65	40.3243445	-104.4140224	0.00	
3923.00†	16.892	206.069	3812.51	-129.24	-705.71	-345.25	3302773.52	1362827.39	40.3242729	-104.4140682	0.00	
4023.00†	16.892	206.069	3908.20	-134.02	-731.81	-358.02	3302761.08	1362801.14	40.3242012	-104.4141140	0.00	
4123.00†	16.892	206.069	4003.88	-138.79	-757.91	-370.79	3302748.63	1362774.88	40.3241296	-104.4141598	0.00	
4223.00†	16.892	206.069	4099.57	-143.57	-784.01	-383.56	3302736.18	1362748.63	40.3240579	-104.4142056	0.00	
4323.00†	16.892	206.069	4195.26	-148.35	-810.11	-396.33	3302723.73	1362722.37	40.3239863	-104.4142514	0.00	
4423.00†	16.892	206.069	4290.94	-153.13	-836.21	-409.09	3302711.28	1362696.12	40.3239146	-104.4142972	0.00	
4523.00†	16.892	206.069	4386.63	-157.91	-862.31	-421.86	3302698.84	1362669.87	40.3238430	-104.4143429	0.00	
4623.00†	16.892	206.069	4482.31	-162.69	-888.42	-434.63	3302686.39	1362643.61	40.3237713	-104.4143887	0.00	
4723.00†	16.892	206.069	4578.00	-167.47	-914.52	-447.40	3302673.94	1362617.36	40.3236997	-104.4144345	0.00	
4823.00†	16.892	206.069	4673.68	-172.25	-940.62	-460.17	3302661.49	1362591.10	40.3236281	-104.4144803	0.00	
4923.00†	16.892	206.069	4769.37	-177.03	-966.72	-472.94	3302649.05	1362564.85	40.3235564	-104.4145261	0.00	
5023.00†	16.892	206.069	4865.05	-181.81	-992.82	-485.71	3302636.60	1362538.59	40.3234848	-104.4145719	0.00	
5123.00†	16.892	206.069	4960.74	-186.59	-1018.92	-498.48	3302624.15	1362512.34	40.3234131	-104.4146177	0.00	
5223.00†	16.892	206.069	5056.42	-191.37	-1045.02	-511.25	3302611.70	1362486.09	40.3233415	-104.4146635	0.00	
5323.00†	16.892	206.069	5152.11	-196.15	-1071.12	-524.02	3302599.26	1362459.83	40.3232698	-104.4147093	0.00	
5423.00†	16.892	206.069	5247.80	-200.93	-1097.22	-536.79	3302586.81	1362433.58	40.3231982	-104.4147551	0.00	

Planned Wellpath Report

BIGFOOT 11-11-1 PWP Rev-B.0

Page 4 of 6

REFERENCE WELLPATH IDENTIFICATION

Operator	CONFLUENCE RESOURCES	Well	BIGFOOT 11-11-1
Field	WELD COUNTY (NAD83, TRUE NORTH)	API/Legal	
Facility	SEC.11-T04N-R63W	Wellbore	BIGFOOT 11-11-1 PWB
Slot	SLOT#05 BIGFOOT 11-11-1 (2355'FSL & 620'FWL,SEC.11)		

WELLPATH DATA (120 stations) † = interpolated, ‡ = extrapolated station

MD [ft]	Inclination [°]	Azimuth [°]	TVD [ft]	Vert Sect [ft]	North [ft]	East [ft]	Grid East [US ft]	Grid North [US ft]	Latitude	Longitude	DLS [°/100ft]	Comments
5523.00†	16.892	206.069	5343.48	-205.71	-1123.32	-549.55	3302574.36	1362407.32	40.3231265	-104.4148009	0.00	
5623.00†	16.892	206.069	5439.17	-210.49	-1149.42	-562.32	3302561.91	1362381.07	40.3230549	-104.4148467	0.00	
5723.00†	16.892	206.069	5534.85	-215.27	-1175.53	-575.09	3302549.47	1362354.81	40.3229832	-104.4148925	0.00	
5823.00†	16.892	206.069	5630.54	-220.05	-1201.63	-587.86	3302537.02	1362328.56	40.3229116	-104.4149382	0.00	
5923.00†	16.892	206.069	5726.22	-224.83	-1227.73	-600.63	3302524.57	1362302.30	40.3228399	-104.4149840	0.00	
5952.62	16.892	206.069	5754.57	-226.25	-1235.46	-604.41	3302520.88	1362294.53	40.3228187	-104.4149976	0.00	KOP
6023.00†	15.120	175.752	5822.33	-224.66	-1253.83	-608.23	3302517.29	1362276.11	40.3227683	-104.4150113	12.00	
6123.00†	19.689	137.704	5918.03	-205.52	-1279.39	-595.89	3302529.95	1362250.71	40.3226981	-104.4149670	12.00	
6223.00†	28.772	118.192	6009.26	-167.38	-1303.31	-563.22	3302562.91	1362227.19	40.3226325	-104.4148499	12.00	
6323.00†	39.354	107.970	6092.06	-111.91	-1324.54	-511.66	3302614.72	1362206.60	40.3225742	-104.4146650	12.00	
6423.00†	50.495	101.614	6162.78	-41.52	-1342.15	-443.46	3302683.12	1362189.82	40.3225259	-104.4144204	12.00	
6523.00†	61.885	97.049	6218.36	40.70	-1355.38	-361.61	3302765.13	1362177.60	40.3224896	-104.4141268	12.00	
6623.00†	73.396	93.375	6256.35	131.16	-1363.64	-269.67	3302857.16	1362170.47	40.3224669	-104.4137971	12.00	
6723.00†	84.965	90.122	6275.09	225.92	-1366.58	-171.67	3302955.18	1362168.73	40.3224588	-104.4134457	12.00	
6766.47	90.000	88.760	6277.00†	267.39	-1366.15	-128.27	3302998.58	1362169.69	40.3224600	-104.4132900	12.00	LANDING
6823.00†	90.000	88.760	6277.00	321.21	-1364.93	-71.75	3303055.07	1362171.60	40.3224634	-104.4130873	0.00	
6923.00†	90.000	88.760	6277.00	416.40	-1362.76	28.23	3303155.01	1362174.99	40.3224693	-104.4127288	0.00	
7023.00†	90.000	88.760	6277.00	511.59	-1360.60	128.21	3303254.95	1362178.38	40.3224752	-104.4123702	0.00	
7123.00†	90.000	88.760	6277.00	606.78	-1358.43	228.18	3303354.89	1362181.77	40.3224812	-104.4120117	0.00	
7223.00†	90.000	88.760	6277.00	701.97	-1356.27	328.16	3303454.83	1362185.16	40.3224871	-104.4116531	0.00	
7323.00†	90.000	88.760	6277.00	797.16	-1354.11	428.14	3303554.77	1362188.55	40.3224931	-104.4112946	0.00	
7423.00†	90.000	88.760	6277.00	892.35	-1351.94	528.11	3303654.70	1362191.94	40.3224990	-104.4109360	0.00	
7523.00†	90.000	88.760	6277.00	987.54	-1349.78	628.09	3303754.64	1362195.33	40.3225049	-104.4105775	0.00	
7623.00†	90.000	88.760	6277.00	1082.74	-1347.61	728.07	3303854.58	1362198.72	40.3225109	-104.4102190	0.00	
7723.00†	90.000	88.760	6277.00	1177.93	-1345.45	828.04	3303954.52	1362202.11	40.3225168	-104.4098604	0.00	
7823.00†	90.000	88.760	6277.00	1273.12	-1343.28	928.02	3304054.46	1362205.50	40.3225227	-104.4095019	0.00	
7923.00†	90.000	88.760	6277.00	1368.31	-1341.12	1028.00	3304154.39	1362208.89	40.3225287	-104.4091433	0.00	
8023.00†	90.000	88.760	6277.00	1463.50	-1338.95	1127.97	3304254.33	1362212.28	40.3225346	-104.4087848	0.00	
8123.00†	90.000	88.760	6277.00	1558.69	-1336.79	1227.95	3304354.27	1362215.67	40.3225405	-104.4084262	0.00	
8223.00†	90.000	88.760	6277.00	1653.88	-1334.62	1327.93	3304454.21	1362219.06	40.3225464	-104.4080677	0.00	

REFERENCE WELLPATH IDENTIFICATION

Operator	CONFLUENCE RESOURCES	Well	BIGFOOT 11-11-1
Field	WELD COUNTY (NAD83, TRUE NORTH)	API/Legal	
Facility	SEC.11-T04N-R63W	Wellbore	BIGFOOT 11-11-1 PWB
Slot	SLOT#05 BIGFOOT 11-11-1 (2355'FSL & 620'FWL,SEC.11)		

WELLPATH DATA (120 stations) † = interpolated, ‡ = extrapolated station

MD [ft]	Inclination [°]	Azimuth [°]	TVD [ft]	Vert Sect [ft]	North [ft]	East [ft]	Grid East [US ft]	Grid North [US ft]	Latitude	Longitude	DLS [°/100ft]	Comments
8323.00†	90.000	88.760	6277.00	1749.07	-1332.46	1427.90	3304554.15	1362222.45	40.3225524	-104.4077091	0.00	
8423.00†	90.000	88.760	6277.00	1844.26	-1330.29	1527.88	3304654.08	1362225.84	40.3225583	-104.4073506	0.00	
8523.00†	90.000	88.760	6277.00	1939.45	-1328.13	1627.86	3304754.02	1362229.23	40.3225642	-104.4069921	0.00	
8623.00†	90.000	88.760	6277.00	2034.65	-1325.96	1727.83	3304853.96	1362232.62	40.3225701	-104.4066335	0.00	
8723.00†	90.000	88.760	6277.00	2129.84	-1323.80	1827.81	3304953.90	1362236.01	40.3225761	-104.4062750	0.00	
8823.00†	90.000	88.760	6277.00	2225.03	-1321.64	1927.79	3305053.84	1362239.40	40.3225820	-104.4059164	0.00	
8923.00†	90.000	88.760	6277.00	2320.22	-1319.47	2027.76	3305153.77	1362242.79	40.3225879	-104.4055579	0.00	
9023.00†	90.000	88.760	6277.00	2415.41	-1317.31	2127.74	3305253.71	1362246.18	40.3225938	-104.4051993	0.00	
9123.00†	90.000	88.760	6277.00	2510.60	-1315.14	2227.72	3305353.65	1362249.57	40.3225997	-104.4048408	0.00	
9223.00†	90.000	88.760	6277.00	2605.79	-1312.98	2327.69	3305453.59	1362252.96	40.3226057	-104.4044823	0.00	
9323.00†	90.000	88.760	6277.00	2700.98	-1310.81	2427.67	3305553.53	1362256.35	40.3226116	-104.4041237	0.00	
9423.00†	90.000	88.760	6277.00	2796.17	-1308.65	2527.64	3305653.47	1362259.74	40.3226175	-104.4037652	0.00	
9523.00†	90.000	88.760	6277.00	2891.36	-1306.48	2627.62	3305753.40	1362263.13	40.3226234	-104.4034066	0.00	
9623.00†	90.000	88.760	6277.00	2986.55	-1304.32	2727.60	3305853.34	1362266.52	40.3226293	-104.4030481	0.00	
9723.00†	90.000	88.760	6277.00	3081.75	-1302.15	2827.57	3305953.28	1362269.91	40.3226352	-104.4026895	0.00	
9823.00†	90.000	88.760	6277.00	3176.94	-1299.99	2927.55	3306053.22	1362273.30	40.3226411	-104.4023310	0.00	
9923.00†	90.000	88.760	6277.00	3272.13	-1297.82	3027.53	3306153.16	1362276.69	40.3226470	-104.4019724	0.00	
10023.00†	90.000	88.760	6277.00	3367.32	-1295.66	3127.50	3306253.09	1362280.08	40.3226530	-104.4016139	0.00	
10123.00†	90.000	88.760	6277.00	3462.51	-1293.50	3227.48	3306353.03	1362283.47	40.3226589	-104.4012553	0.00	
10223.00†	90.000	88.760	6277.00	3557.70	-1291.33	3327.46	3306452.97	1362286.86	40.3226648	-104.4008968	0.00	
10323.00†	90.000	88.760	6277.00	3652.89	-1289.17	3427.43	3306552.91	1362290.25	40.3226707	-104.4005383	0.00	
10423.00†	90.000	88.760	6277.00	3748.08	-1287.00	3527.41	3306652.85	1362293.64	40.3226766	-104.4001797	0.00	
10523.00†	90.000	88.760	6277.00	3843.27	-1284.84	3627.39	3306752.78	1362297.03	40.3226825	-104.3998212	0.00	
10623.00†	90.000	88.760	6277.00	3938.46	-1282.67	3727.36	3306852.72	1362300.42	40.3226884	-104.3994626	0.00	
10723.00†	90.000	88.760	6277.00	4033.65	-1280.51	3827.34	3306952.66	1362303.81	40.3226943	-104.3991041	0.00	
10823.00†	90.000	88.760	6277.00	4128.85	-1278.34	3927.32	3307052.60	1362307.20	40.3227002	-104.3987455	0.00	
10923.00†	90.000	88.760	6277.00	4224.04	-1276.18	4027.29	3307152.54	1362310.59	40.3227061	-104.3983870	0.00	
11023.00†	90.000	88.760	6277.00	4319.23	-1274.01	4127.27	3307252.47	1362313.98	40.3227120	-104.3980284	0.00	
11123.00†	90.000	88.760	6277.00	4414.42	-1271.85	4227.25	3307352.41	1362317.37	40.3227179	-104.3976699	0.00	
11159.23	90.000	88.760	6277.00‡	4448.90	-1271.06	4263.47	3307388.62	1362318.60	40.3227200	-104.3975400	0.00	TD

HOLE & CASING SECTIONS

- Ref Wellbore: BIGFOOT 11-11-1 PWB Ref Wellpath: BIGFOOT 11-11-1 PWP Rev-B.0

String/Diameter	Start MD [ft]	End MD [ft]	Interval [ft]	Start TVD [ft]	End TVD [ft]	Start N/S [ft]	Start E/W [ft]	End N/S [ft]	End E/W [ft]
9.625in Casing Surface	23.00	1715.23	1692.23	23.00	1700.00	0.00	0.00	-129.46	-63.34

TARGETS

Name	MD [ft]	TVD [ft]	North [ft]	East [ft]	Grid East [US ft]	Grid North [US ft]	Latitude	Longitude	Shape
SEC.11-T04N-R63W	N/A	-2.50	98.36	0.00	3303108.87	1363635.60	40.3264800	-104.4128300	polygon
2D Polygon: dimensions not calculated									
SEC.11-T04N-R63W 470' SETBACK	N/A	-2.50	98.36	0.00	3303108.87	1363635.60	40.3264800	-104.4128300	polygon
2D Polygon: dimensions not calculated									
	11159.23	6277.00	-1271.06	4263.47	3307388.62	1362318.60	40.3227200	-104.3975400	point

TARGETS									
Name	MD [ft]	TVD [ft]	North [ft]	East [ft]	Grid East [US ft]	Grid North [US ft]	Latitude	Longitude	Shape
2) BIGFOOT 11-11-1 BHL REV-1 (994'FSL & 470'FEL,SEC.11)									
1) BIGFOOT 11-11-1 LP REV-1 (994'FSL & 470'FWL,SEC.11)	6766.47	6277.00	-1366.15	-128.27	3302998.58	1362169.69	40.3224600	-104.4132900	point

SURVEY PROGRAM - Ref Wellbore: BIGFOOT 11-11-1 PWB					Ref Wellpath: BIGFOOT 11-11-1 PWP Rev-B.0				
Start MD [ft]	End MD [ft]	Positional Uncertainty Model			Log Name/Comment		Wellbore		
23.00	1715.23	BH NaviTrak (2019) (Axial)					BIGFOOT 11-11-1 PWB		
1715.23	11159.23	BH AutoTrak Curve/eXpress (2019) (Short spacing)					BIGFOOT 11-11-1 PWB		



Planned Wellpath Report

BIGFOOT 11-11-1 PWP Rev-B.0

Page 6 of 6



REFERENCE WELLPATH IDENTIFICATION

Operator	CONFLUENCE RESOURCES	Well	BIGFOOT 11-11-1
Field	WELD COUNTY (NAD83, TRUE NORTH)	API/Legal	
Facility	SEC.11-T04N-R63W	Wellbore	BIGFOOT 11-11-1 PWB
Slot	SLOT#05 BIGFOOT 11-11-1 (2355'FSL & 620'FWL,SEC.11)		

DESIGN COMMENTS

MD [ft]	Inclination [°]	Azimuth [°]	TVD [ft]	Comment
23.00	0.000	206.069	23.00	Tie On
800.00	0.000	206.069	800.00	End of Tangent
1644.60	16.892	206.069	1632.42	End of Build (J)
1715.23	16.892	206.069	1700.00	End of Tangent (J)
1815.23	16.892	206.069	1795.69	End of Tangent
5952.62	16.892	206.069	5754.57	KOP
6766.47	90.000	88.760	6277.00	LANDING
11159.23	90.000	88.760	6277.00	TD



Closest Approach Clearance Summary Report

BIGFOOT 11-11-1 PWP Rev-B.0 - SPE WPTS Stop
Drilling HSE Risk (2017)
Page 1 of 3



REFERENCE WELLPATH IDENTIFICATION			
Operator	CONFLUENCE RESOURCES	Well	BIGFOOT 11-11-1
Field	WELD COUNTY (NAD83, TRUE NORTH)	API/Legal	
Facility	SEC.11-T04N-R63W	Wellbore	BIGFOOT 11-11-1 PWB
Slot	SLOT#05 BIGFOOT 11-11-1 (2355'FSL & 620'FWL,SEC.11)		

REPORT SETUP INFORMATION			
Projection System	NAD83 / Lambert Colorado SP, Northern Zone (501), US feet	Software System	WellArchitect® 6.0
North Reference	True	User	Painsetr
Scale	0.999958	Report Generated	4/26/2022 at 1:44:54 PM
Convergence at slot	0.70° East	Database	WellArchitectDB

WELLPATH LOCATION						
	Local coordinates		Grid coordinates		Geographic coordinates	
	North[ft]	East[ft]	Easting[US ft]	Northing[US ft]	Latitude	Longitude
Slot Location	-98.36	0.00	3303110.08	1363537.25	40.3262100°	-104.4128300°
Facility Reference Pt			3303108.87	1363635.60	40.3264800°	-104.4128300°
Field Reference Pt			3230456.90	1245096.09	40.0032400°	-104.6773400°

WELLPATH DATUM			
Calculation method	Minimum Curvature	Rig (23') (KB) to Facility Vertical Datum	4639.00ft
Horizontal Reference Pt	Slot	Rig (23') (KB) to Mean Sea Level	4639.00ft
Vertical Reference Pt	Rig (23') (KB)	Rig (23') (KB) to Ground Level at Slot (SLOT#05 BIGFOOT 11-11-1 (2355'FSL & 620'FWL,SEC.11))	23.00ft
MD Reference Pt	Rig (23') (KB)		
Field Vertical Reference	Mean Sea Level		

POSITIONAL UNCERTAINTY CALCULATION SETTINGS					
Ellipse Confidence Limit	3.50 Std Dev	Ellipse Start MD	23.00ft	Surface Position Uncertainty	included
Declination	7.76° East of TN	Dip Angle	66.72°	Mag Field Strength	51850 nT
Slot Surface Uncertainty @1SD		Horizontal	0.100ft	Vertical	1.000ft
Facility Surface Uncertainty @1SD		Horizontal	8.200ft	Vertical	3.000ft
Positional Uncertainty values in the WELLPATH DATA table are the projection of the ellipsoid of uncertainty onto the vertical and horizontal planes					



Closest Approach Clearance Summary Report

BIGFOOT 11-11-1 PWP Rev-B.0 - SPE WPTS Stop
Drilling HSE Risk (2017)
Page 2 of 3



REFERENCE WELLPATH IDENTIFICATION			
Operator	CONFLUENCE RESOURCES	Well	BIGFOOT 11-11-1
Field	WELD COUNTY (NAD83, TRUE NORTH)	API/Legal	
Facility	SEC.11-T04N-R63W	Wellbore	BIGFOOT 11-11-1 PWB
Slot	SLOT#05 BIGFOOT 11-11-1 (2355'FSL & 620'FWL,SEC.11)		

PROXIMITY-SCAN RULE			
Rule Name	SPE WPTS Stop Drilling HSE Risk (2017)	Rule Based On	Ratio
Plane of Rule	Closest Approach	Threshold Value	1.00
Include Casing & Hole Size	yes	Apply Cone of Safety	no

HOLE & CASING SECTIONS									
- Ref Wellbore: BIGFOOT 11-11-1 PWB Ref Wellpath: BIGFOOT 11-11-1 PWP Rev-B.0									
String/Diameter	Start MD [ft]	End MD [ft]	Interval [ft]	Start TVD [ft]	End TVD [ft]	Start N/S [ft]	Start E/W [ft]	End N/S [ft]	End E/W [ft]
9.625in Casing Surface	23.00	1715.23	1692.23	23.00	1700.00	0.00	0.00	-129.46	-63.34

SURVEY PROGRAM - Ref Wellbore: BIGFOOT 11-11-1 PWB Ref Wellpath: BIGFOOT 11-11-1 PWP Rev-B.0				
Start MD [ft]	End MD [ft]	Positional Uncertainty Model	Log Name/Comment	Wellbore
23.00	1715.23	BH NaviTrak (2019) (Axial)		BIGFOOT 11-11-1 PWB
1715.23	11159.23	BH AutoTrak Curve/eXpress (2019) (Short spacing)		BIGFOOT 11-11-1 PWB



Closest Approach Clearance Summary Report

**BIGFOOT 11-11-1 PWP Rev-B.0 - SPE WPTS Stop
Drilling HSE Risk (2017)**
Page 3 of 3



REFERENCE WELLPATH IDENTIFICATION			
Operator	CONFLUENCE RESOURCES	Well	BIGFOOT 11-11-1
Field	WELD COUNTY (NAD83, TRUE NORTH)	API/Legal	
Facility	SEC.11-T04N-R63W	Wellbore	BIGFOOT 11-11-1 PWB
Slot	SLOT#05 BIGFOOT 11-11-1 (2355'FSL & 620'FWL,SEC.11)		

CALCULATION RANGE & CUTOFF		
From: 23.00ft MD	To: 11159.23ft MD	C-C Cutoff: (none)

OFFSET WELL CLEARANCE SUMMARY (17 Offset Wellpaths selected) Ratios are calculated in Closest Approach plane												
Offset Facility	Offset Slot	Offset Well	Offset Wellbore	Offset Wellpath	Wellbore Status	C-C Clearance Distance			Rule Separation Ratio			
						Ref MD [ft]	Min C-C Clear Dist [ft]	Diverging from MD [ft]	Ref MD of Min Ratio [ft]	Min Ratio	Min Ratio Dvrg from [ft]	Rule Status
SEC.11-T04N-R63W	SLOT#04 BIGFOOT 11-10-3 (2380'FSL & 620'FWL,SEC.11)	BIGFOOT 11-10-3	BIGFOOT 11-10-3 PWB	BIGFOOT 11-10-3 PWP Rev-B.0	Planned	23.00	25.50	11159.23	11159.23	0.88	11159.23	FAIL
SEC.11-T04N-R63W	SLOT#07 BIGFOOT 11-12-2 (2305'FSL & 620'FWL,SEC.11)	BIGFOOT 11-12-2	BIGFOOT 11-12-2 PWB	BIGFOOT 11-12-2 PWP Rev-B.0	Planned	23.00	51.08	11123.00	11159.23	1.07	11159.23	WARN
SEC.11-T04N-R63W	SLOT#06 BIGFOOT 11-5-4 (2330'FSL & 620'FWL,SEC.11)	BIGFOOT 11-5-4	BIGFOOT 11-5-4 PWB	BIGFOOT 11-5-4 PWP Rev-B.0	Planned	23.00	25.50	11123.00	11159.23	1.35	11159.23	PASS
SEC.11-T04N-R63W	SLOT#03 BIGFOOT 11-9-2 (2405'FSL & 620'FWL,SEC.11)	BIGFOOT 11-9-2	BIGFOOT 11-9-2 PWB	BIGFOOT 11-9-2 PWP Rev-B.0	Planned	23.00	51.00	11159.23	11159.23	1.57	11159.23	PASS
SEC.11-T04N-R63W	SLOT#08 BIGFOOT 11-13-3 (2280'FSL & 620'FWL,SEC.11)	BIGFOOT 11-13-3	BIGFOOT 11-13-3 PWB	BIGFOOT 11-13-3 PWP Rev-B.0	Planned	23.00	76.56	523.00	11159.23	1.93	11159.23	PASS
SEC.11-T04N-R63W	SLOT#02 BIGFOOT 11-4-4 (2430'FSL & 620'FWL,SEC.11)	BIGFOOT 11-4-4	BIGFOOT 11-4-4 PWB	BIGFOOT 11-4-4 PWP Rev-B.0	Planned	23.00	72.86	11159.23	11159.23	2.37	11159.23	PASS
SEC.11-T04N-R63W	SLOT#01 BIGFOOT 11-8-1 (2455'FSL & 620'FWL,SEC.11)	BIGFOOT 11-8-1	BIGFOOT 11-8-1 PWB	BIGFOOT 11-8-1 PWP Rev-B.0	Planned	23.00	98.36	11159.23	11159.23	2.65	11159.23	PASS
SEC.11-T04N-R63W	SLOT#20 BIGFOOT 11-7-3 (2281'FSL & 470'FWL,SEC.11)	BIGFOOT 11-7-3	BIGFOOT 11-7-3 PWB	BIGFOOT 11-7-3 PWP Rev-B.0	Planned	1364.88	147.18	11159.23	11159.23	3.41	11159.23	PASS
SEC.11-T04N-R63W	SLOT#19 BIGFOOT 11-6-2 (2306'FSL & 470'FWL,SEC.11)	BIGFOOT 11-6-2	BIGFOOT 11-6-2 PWB	BIGFOOT 11-6-2 PWP Rev-B.0	Planned	1250.04	146.80	1250.04	11159.23	4.23	11159.23	PASS
SEC.11-T04N-R63W	SLOT#18 BIGFOOT 11-3-4 (2331'FSL & 470'FWL,SEC.11)	BIGFOOT 11-3-4	BIGFOOT 11-3-4 PWB	BIGFOOT 11-3-4 PWP Rev-B.0	Planned	1117.46	146.53	1117.46	11159.23	4.92	11159.23	PASS
SEC.11-T04N-R63W	SLOT#17 BIGFOOT 11-5-1 (2356'FSL & 470'FWL,SEC.11)	BIGFOOT 11-5-1	BIGFOOT 11-5-1 PWB	BIGFOOT 11-5-1 PWP Rev-B.0	Planned	964.30	149.88	964.30	11159.23	5.34	11159.23	PASS
SEC.11-T04N-R63W	SLOT#16 BIGFOOT 11-4-3 (2381'FSL & 470'FWL,SEC.11)	BIGFOOT 11-4-3	BIGFOOT 11-4-3 PWB	BIGFOOT 11-4-3 PWP Rev-B.0	Planned	800.00	152.14	800.00	11159.23	6.07	11159.23	PASS
SEC.11-T04N-R63W	SLOT#15 BIGFOOT 11-3-2 (2406'FSL & 470'FWL,SEC.11)	BIGFOOT 11-3-2	BIGFOOT 11-3-2 PWB	BIGFOOT 11-3-2 PWP Rev-B.0	Planned	23.00	157.84	723.00	11159.23	6.87	11159.23	PASS
SEC.11-T04N-R63W	SLOT#14 BIGFOOT 11-2-4 (2431'FSL & 470'FWL,SEC.11)	BIGFOOT 11-2-4	BIGFOOT 11-2-4 PWB	BIGFOOT 11-2-4 PWP Rev-B.0	Planned	23.00	167.27	623.00	11159.23	7.53	11159.23	PASS
SEC.10-T04N-R63W	SLOT#02 70 RANCH 10-11-2 (2360'FNL & 514'FEL, SEC.10)	70 RANCH 10-11-2	70 RANCH 10-11-2 AWB	70 RANCH 10-11-2 AWP	Drilling	1423.97	1230.68	11159.23	11159.23	8.80	11159.23	PASS

OFFSET WELL CLEARANCE SUMMARY (17 Offset Wellpaths selected) Ratios are calculated in Closest Approach plane												
Offset Facility	Offset Slot	Offset Well	Offset Wellbore	Offset Wellpath	Wellbore Status	C-C Clearance Distance			Rule Separation Ratio			
						Ref MD [ft]	Min C-C Clear Dist [ft]	Diverging from MD [ft]	Ref MD of Min Ratio [ft]	Min Ratio	Min Ratio Dvrg from [ft]	Rule Status
SEC.10-T04N-R63W	SLOT#01 70 RANCH 10-11-1 (2345'FNL & 514'FEL, SEC.10)	70 RANCH 10-11-1	70 RANCH 10-11-1 AWB	70 RANCH 10-11-1 AWP	Drilling	23.00	1244.82	11159.23	11159.23	10.10	11159.23	PASS
SEC.11-T04N-R63W	SLOT#13 BIGFOOT 11-1-4 (2456'FSL & 470'FWL,SEC.11)	BIGFOOT 11-1-4	BIGFOOT 11-1-4 PWB	BIGFOOT 11-1-4 PWP Rev-B.0	Planned	23.00	179.85	223.00	11159.23	10.40	11159.23	PASS