

CONFLUENCE RESOURCES



Location: COLORADO Slot: SLOT#04 BIGFOOT 11-10-3 (2380'FSL & 620'FWL,SEC.11)

Field: WELD COUNTY (NAD83, TRUE NORTH) Well: BIGFOOT 11-10-3

Facility: SEC.11-T04N-R63W Wellbore: BIGFOOT 11-10-3 PWB

Plot reference wellpath is BIGFOOT 11-10-3 PWP RevB.0

True vertical depths are referenced to Rig (23) (KB)

Reference wellpath measured depths are referenced to Rig (23) (KB)

Rig (23) (KB) to Mean Sea Level: 4639 feet

Mean Sea Level to Ground level (At Slot: SLOT#04 BIGFOOT 11-10-3 (2380'FSL & 620'FWL,SEC.11)): -4616 feet

Offset wellpath MDs are referenced to each path's default MD datum

Grid System: NAD83 / Lambert Colorado SP, Northern Zone (501), US feet

North Reference: True north

Scale: True distance

Coordinates are in feet referenced to Slot

Depths are in feet

Created by: painestr on 2022-04-26; Database: WellArchitectDB

Location Information

Facility Name				Grid East (US ft)	Grid North (US ft)	Latitude	Longitude
SEC.11-T04N-R63W				3303108.873	1363635.600	40°19'35.3280"N	104°24'46.1880"W
Slot	Local N (ft)	Local E (ft)		Grid East (US ft)	Grid North (US ft)	Latitude	Longitude
SLOT#04 BIGFOOT 11-10-3 (2380'FSL & 620'FWL,SEC.11)	-72.86	0.00		3303109.767	1363562.747	40°19'34.6080"N	104°24'46.1880"W
Rig (23) (KB) to Ground level (At Slot: SLOT#04 BIGFOOT 11-10-3 (2380'FSL & 620'FWL,SEC.11))				23ft			
Mean Sea Level to Ground level (At Slot: SLOT#04 BIGFOOT 11-10-3 (2380'FSL & 620'FWL,SEC.11))				-4616ft			
Rig (23) (KB) to Mean Sea Level				4639ft			

Hole and Casing Sections

Name	Start MD (ft)	End MD (ft)	Interval (ft)	Start TVD (ft)	End TVD (ft)	Start Local N (ft)	Start Local E (ft)	End Local N (ft)	End Local E (ft)	Wellbore
9.625in Casing Surface	23.00	1712.22	1689.22	23.00	1700.00	0.00	0.00	-102.00	-74.20	BIGFOOT 11-10-3 PWB

Survey Program

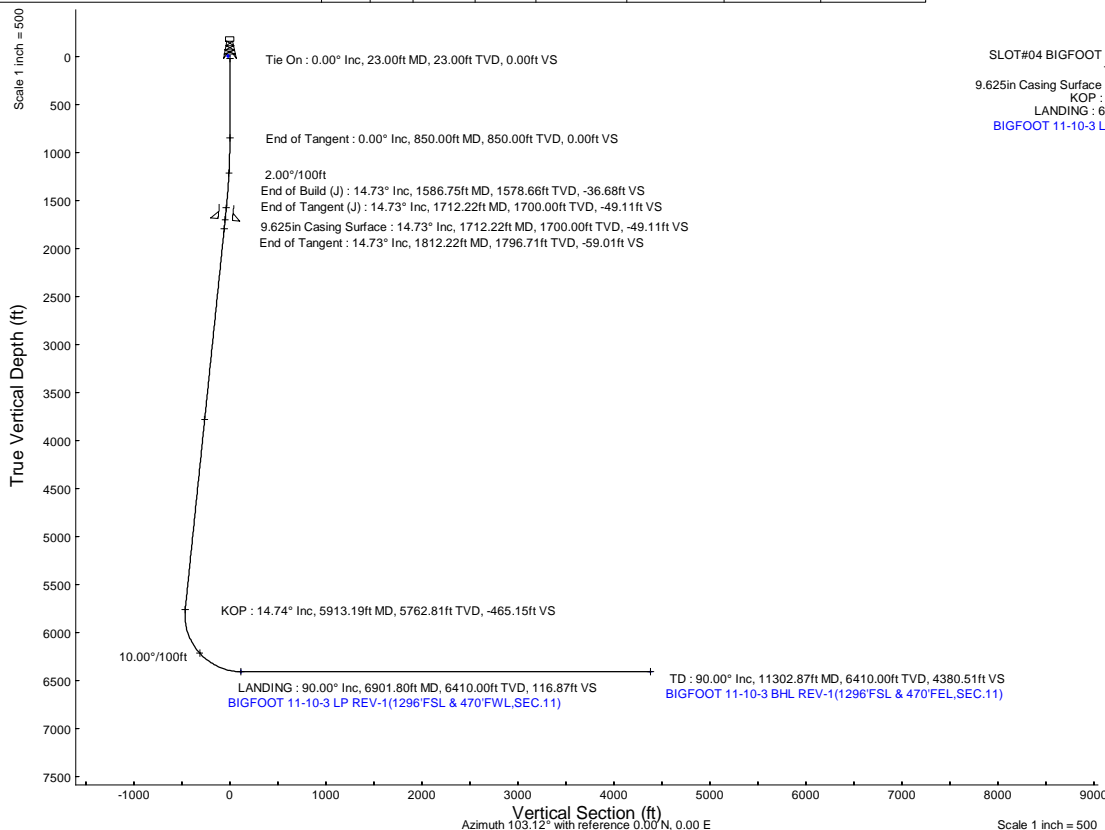
Start MD (ft)	End MD (ft)	Tool	Model	Log Name/Comment	Wellbore
23.00	1712.22	BH NavitTrak (2019)	BH NavitTrak (2019) (Axial)		BIGFOOT 11-10-3 PWB
1712.22	11302.87	BH AutoTrak Curve/xpress (2019)	BH AutoTrak Curve/xpress (2019) (Short spacing)		BIGFOOT 11-10-3 PWB

Bottom Hole Location

MD (ft)	Inc (°)	Az (°)	TVD (ft)	Local N (ft)	Local E (ft)	Grid East (US ft)	Grid North (US ft)	Latitude	Longitude
11302.87	90.000	88.762	6410.00	-994.19	4266.20	3307387.65	1362620.98	40°19'24.7800"N	104°23'51.1080"W

Targets

Name	MD (ft)	TVD (ft)	Local N (ft)	Local E (ft)	Grid East (US ft)	Grid North (US ft)	Latitude	Longitude
SEC.11-T04N-R63W	N/A	-2.50	72.86	0.00	3303108.87	1363635.60	40°19'35.3280"N	104°24'46.1880"W
SEC.11-T04N-R63W 470' SETBACK	N/A	-2.50	72.86	0.00	3303108.87	1363635.60	40°19'35.3280"N	104°24'46.1880"W
BIGFOOT 11-10-3 BHL REV-1(1296'FSL & 470'FEL,SEC.11)	11302.87	6410.00	-994.19	4266.20	3307387.65	1362620.98	40°19'24.7800"N	104°23'51.1080"W
BIGFOOT 11-10-3 LP REV-1(1296'FSL & 470'FWL,SEC.11)	6901.80	6410.00	-1089.28	-133.84	3302989.29	1362471.96	40°19'23.8440"N	104°24'47.9160"W



SLOT#04 BIGFOOT 11-10-3 (2380'FSL & 620'FWL,SEC.11)

Tie On : 23.00ft TVD, 0.00ft N, 0.00ft E

9.625in Casing Surface : 1700.00ft TVD, 102.00ft S, 74.20ft W

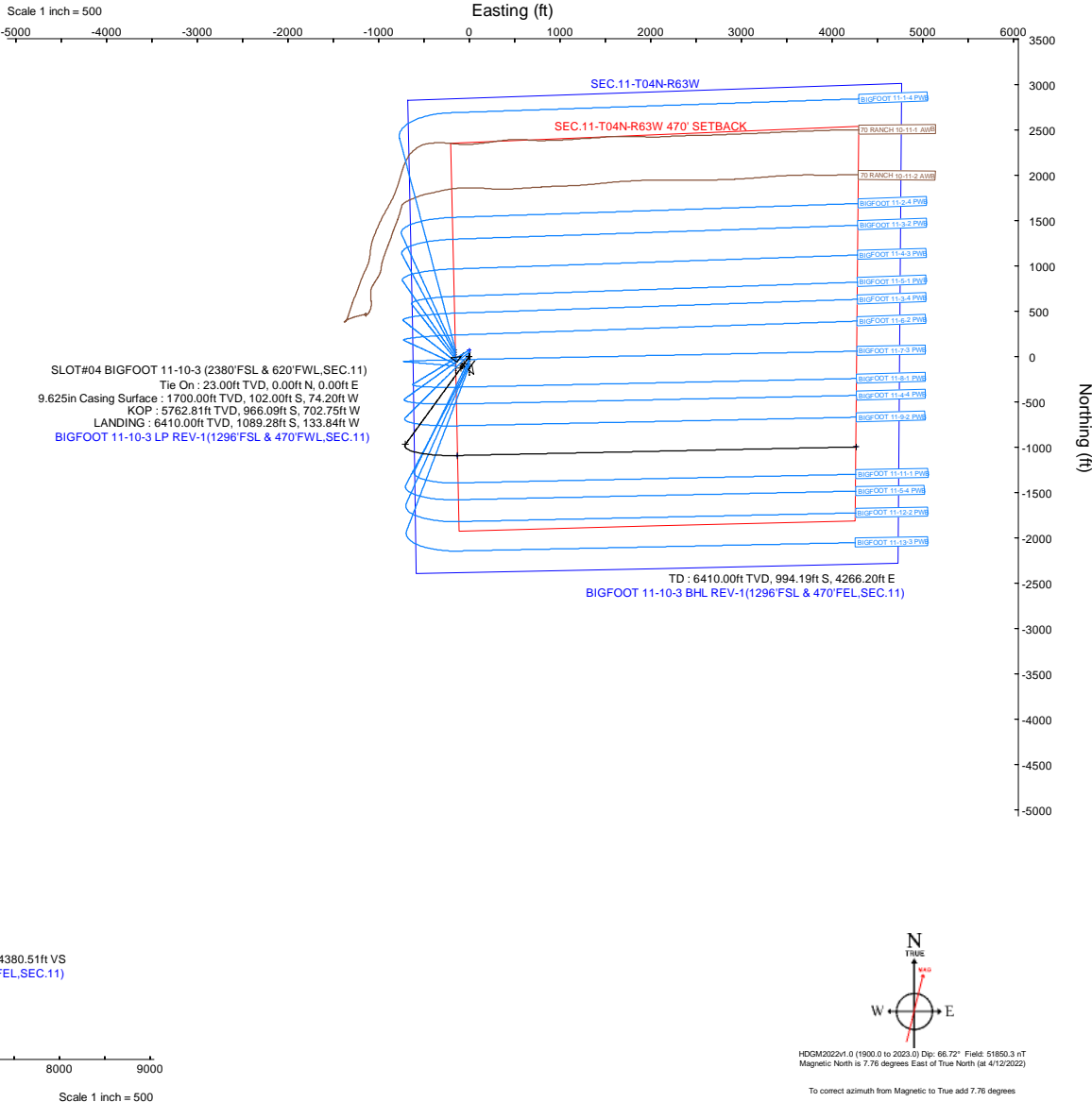
KOP : 5762.81ft TVD, 966.09ft S, 702.75ft W

LANDING : 6410.00ft TVD, 1089.28ft S, 133.84ft W

BIGFOOT 11-10-3 LP REV-1(1296'FSL & 470'FWL,SEC.11)

Well Profile Data

Design Comment	MD (ft)	Inc (°)	Az (°)	TVD (ft)	Local N (ft)	Local E (ft)	DLS (°/100ft)	VS (ft)
Tie On	23.00	0.000	216.033	23.00	0.00	0.00	0.00	0.00
End of Tangent	850.00	0.000	216.033	850.00	0.00	0.00	0.00	0.00
End of Build (J)	1586.75	14.735	216.033	1578.66	-76.19	-55.42	2.00	-36.68
End of Tangent (J)	1712.22	14.735	216.033	1700.00	-102.00	-74.20	0.00	-49.11
End of Tangent	1812.22	14.735	216.033	1796.71	-122.57	-89.16	0.00	-59.01
KOP	5913.19	14.735	216.033	5762.81	-966.09	-702.75	0.00	-465.15
LANDING	6901.80	90.000	88.762	6410.00	-1089.28	-133.84	10.00	116.87
TD	11302.87	90.000	88.762	6410.00	-994.19	4266.20	0.00	4380.51



HOGM2022v4.0 (1900.0 to 2023.0) Dp: 66.72° Field: 51850.3 nT

Magnetic North is 7.76 degrees East of True North (at 4/12/2022)

To convert azimuth from Magnetic to True add 7.76 degrees



# Planned Wellpath Report

BIGFOOT 11-10-3 PWP Rev-B.0

Page 1 of 8



## REFERENCE WELLPATH IDENTIFICATION

Operator	CONFLUENCE RESOURCES	Well	BIGFOOT 11-10-3
Field	WELD COUNTY (NAD83, TRUE NORTH)	API/Legal	
Facility	SEC.11-T04N-R63W	Wellbore	BIGFOOT 11-10-3 PWB
Slot	SLOT#04 BIGFOOT 11-10-3 (2380'FSL & 620'FWL,SEC.11)		

## REPORT SETUP INFORMATION

Projection System	NAD83 / Lambert Colorado SP, Northern Zone (501), US feet	Software System	WellArchitect® 6.0
North Reference	True	User	Painsetr
Scale	0.999958	Report Generated	4/26/2022 at 1:39:17 PM
Convergence at slot	0.70° East	Database	WellArchitectDB

## WELLPATH LOCATION

	Local coordinates		Grid coordinates		Geographic coordinates	
	North[ft]	East[ft]	Easting[US ft]	Northing[US ft]	Latitude	Longitude
Slot Location	-72.86	0.00	3303109.77	1363562.75	40.3262800°	-104.4128300°
Facility Reference Pt			3303108.87	1363635.60	40.3264800°	-104.4128300°
Field Reference Pt			3230456.90	1245096.09	40.0032400°	-104.6773400°

## WELLPATH DATUM

Calculation method	Minimum curvature	Rig (23') (KB) to Facility Vertical Datum	4639.00ft
Horizontal Reference Pt	Slot	Rig (23') (KB) to Mean Sea Level	4639.00ft
Vertical Reference Pt	Rig (23') (KB)	Rig (23') (KB) to Ground Level at Slot (SLOT#04 BIGFOOT 11-10-3 (2380'FSL & 620'FWL,SEC.11))	23.00ft
MD Reference Pt	Rig (23') (KB)	Section Origin	N 0.00, E 0.00 ft
Field Vertical Reference	Mean Sea Level	Section Azimuth	103.12°

# Planned Wellpath Report

BIGFOOT 11-10-3 PWP Rev-B.0

Page 2 of 8

## REFERENCE WELLPATH IDENTIFICATION

Operator	CONFLUENCE RESOURCES	Well	BIGFOOT 11-10-3
Field	WELD COUNTY (NAD83, TRUE NORTH)	API/Legal	
Facility	SEC.11-T04N-R63W	Wellbore	BIGFOOT 11-10-3 PWB
Slot	SLOT#04 BIGFOOT 11-10-3 (2380'FSL & 620'FWL,SEC.11)		

## WELLPATH DATA (121 stations) † = interpolated, ‡ = extrapolated station

MD [ft]	Inclination [°]	Azimuth [°]	TVD [ft]	Vert Sect [ft]	North [ft]	East [ft]	Grid East [US ft]	Grid North [US ft]	Latitude	Longitude	DLS [°/100ft]	Comments
0.00†	0.000	216.033	0.00	0.00	0.00	0.00	3303109.77	1363562.75	40.3262800	-104.4128300	0.00	
23.00	0.000	216.033	23.00	0.00	0.00	0.00	3303109.77	1363562.75	40.3262800	-104.4128300	0.00	Tie On
123.00†	0.000	216.033	123.00	0.00	0.00	0.00	3303109.77	1363562.75	40.3262800	-104.4128300	0.00	
223.00†	0.000	216.033	223.00	0.00	0.00	0.00	3303109.77	1363562.75	40.3262800	-104.4128300	0.00	
323.00†	0.000	216.033	323.00	0.00	0.00	0.00	3303109.77	1363562.75	40.3262800	-104.4128300	0.00	
423.00†	0.000	216.033	423.00	0.00	0.00	0.00	3303109.77	1363562.75	40.3262800	-104.4128300	0.00	
523.00†	0.000	216.033	523.00	0.00	0.00	0.00	3303109.77	1363562.75	40.3262800	-104.4128300	0.00	
623.00†	0.000	216.033	623.00	0.00	0.00	0.00	3303109.77	1363562.75	40.3262800	-104.4128300	0.00	
723.00†	0.000	216.033	723.00	0.00	0.00	0.00	3303109.77	1363562.75	40.3262800	-104.4128300	0.00	
823.00†	0.000	216.033	823.00	0.00	0.00	0.00	3303109.77	1363562.75	40.3262800	-104.4128300	0.00	
850.00	0.000	216.033	850.00	0.00	0.00	0.00	3303109.77	1363562.75	40.3262800	-104.4128300	0.00	End of Tangent
923.00†	1.460	216.033	922.99	-0.36	-0.75	-0.55	3303109.23	1363561.99	40.3262779	-104.4128320	2.00	
1023.00†	3.460	216.033	1022.89	-2.03	-4.22	-3.07	3303106.75	1363558.49	40.3262684	-104.4128410	2.00	
1123.00†	5.460	216.033	1122.59	-5.06	-10.51	-7.65	3303102.25	1363552.14	40.3262511	-104.4128574	2.00	
1223.00†	7.460	216.033	1221.95	-9.44	-19.61	-14.26	3303095.74	1363542.97	40.3262262	-104.4128812	2.00	
1323.00†	9.460	216.033	1320.85	-15.17	-31.51	-22.92	3303087.24	1363530.96	40.3261935	-104.4129122	2.00	
1423.00†	11.460	216.033	1419.19	-22.24	-46.19	-33.60	3303076.74	1363516.15	40.3261532	-104.4129505	2.00	
1523.00†	13.460	216.033	1516.83	-30.64	-63.63	-46.29	3303064.26	1363498.55	40.3261053	-104.4129960	2.00	
1586.75	14.735	216.033	1578.66	-36.68	-76.19	-55.42	3303055.28	1363485.89	40.3260709	-104.4130288	2.00	End of Build (J)
1623.00†	14.735	216.033	1613.71	-40.27	-83.65	-60.85	3303049.95	1363478.37	40.3260504	-104.4130482	0.00	
1712.22	14.735	216.033	1700.00	-49.11	-102.00	-74.20	3303036.83	1363459.85	40.3260000	-104.4130961	0.00	End of Tangent (J)
1723.00†	14.735	216.033	1710.42	-50.18	-104.21	-75.81	3303035.24	1363457.62	40.3259939	-104.4131019	0.00	
1812.22	14.735	216.033	1796.71	-59.01	-122.57	-89.16	3303022.12	1363439.10	40.3259436	-104.4131498	0.00	End of Tangent
1823.00†	14.735	216.033	1807.14	-60.08	-124.78	-90.77	3303020.54	1363436.87	40.3259375	-104.4131555	0.00	
1923.00†	14.735	216.033	1903.85	-69.98	-145.35	-105.73	3303005.83	1363416.12	40.3258810	-104.4132092	0.00	
2023.00†	14.735	216.033	2000.56	-79.89	-165.92	-120.69	3302991.12	1363395.37	40.3258246	-104.4132629	0.00	
2123.00†	14.735	216.033	2097.27	-89.79	-186.49	-135.66	3302976.41	1363374.62	40.3257681	-104.4133165	0.00	
2223.00†	14.735	216.033	2193.98	-99.69	-207.06	-150.62	3302961.70	1363353.87	40.3257116	-104.4133702	0.00	
2323.00†	14.735	216.033	2290.69	-109.60	-227.63	-165.58	3302947.00	1363333.12	40.3256552	-104.4134238	0.00	
2423.00†	14.735	216.033	2387.40	-119.50	-248.20	-180.54	3302932.29	1363312.37	40.3255987	-104.4134775	0.00	

# Planned Wellpath Report

BIGFOOT 11-10-3 PWP Rev-B.0

Page 3 of 8

## REFERENCE WELLPATH IDENTIFICATION

Operator	CONFLUENCE RESOURCES	Well	BIGFOOT 11-10-3
Field	WELD COUNTY (NAD83, TRUE NORTH)	API/Legal	
Facility	SEC.11-T04N-R63W	Wellbore	BIGFOOT 11-10-3 PWB
Slot	SLOT#04 BIGFOOT 11-10-3 (2380'FSL & 620'FWL,SEC.11)		

## WELLPATH DATA (121 stations) † = interpolated, ‡ = extrapolated station

MD [ft]	Inclination [°]	Azimuth [°]	TVD [ft]	Vert Sect [ft]	North [ft]	East [ft]	Grid East [US ft]	Grid North [US ft]	Latitude	Longitude	DLS [°/100ft]	Comments
2523.00†	14.735	216.033	2484.11	-129.41	-268.76	-195.51	3302917.58	1363291.62	40.3255423	-104.4135312	0.00	
2623.00†	14.735	216.033	2580.83	-139.31	-289.33	-210.47	3302902.87	1363270.87	40.3254858	-104.4135848	0.00	
2723.00†	14.735	216.033	2677.54	-149.21	-309.90	-225.43	3302888.16	1363250.12	40.3254293	-104.4136385	0.00	
2823.00†	14.735	216.033	2774.25	-159.12	-330.47	-240.39	3302873.46	1363229.37	40.3253729	-104.4136921	0.00	
2923.00†	14.735	216.033	2870.96	-169.02	-351.04	-255.35	3302858.75	1363208.62	40.3253164	-104.4137458	0.00	
3023.00†	14.735	216.033	2967.67	-178.92	-371.61	-270.32	3302844.04	1363187.87	40.3252600	-104.4137995	0.00	
3123.00†	14.735	216.033	3064.38	-188.83	-392.18	-285.28	3302829.33	1363167.12	40.3252035	-104.4138531	0.00	
3223.00†	14.735	216.033	3161.09	-198.73	-412.74	-300.24	3302814.62	1363146.37	40.3251470	-104.4139068	0.00	
3323.00†	14.735	216.033	3257.80	-208.63	-433.31	-315.20	3302799.91	1363125.62	40.3250906	-104.4139604	0.00	
3423.00†	14.735	216.033	3354.52	-218.54	-453.88	-330.16	3302785.21	1363104.87	40.3250341	-104.4140141	0.00	
3523.00†	14.735	216.033	3451.23	-228.44	-474.45	-345.13	3302770.50	1363084.12	40.3249777	-104.4140678	0.00	
3623.00†	14.735	216.033	3547.94	-238.34	-495.02	-360.09	3302755.79	1363063.37	40.3249212	-104.4141214	0.00	
3723.00†	14.735	216.033	3644.65	-248.25	-515.59	-375.05	3302741.08	1363042.62	40.3248647	-104.4141751	0.00	
3823.00†	14.735	216.033	3741.36	-258.15	-536.16	-390.01	3302726.37	1363021.87	40.3248083	-104.4142287	0.00	
3923.00†	14.735	216.033	3838.07	-268.05	-556.73	-404.98	3302711.66	1363001.12	40.3247518	-104.4142824	0.00	
4023.00†	14.735	216.033	3934.78	-277.96	-577.29	-419.94	3302696.96	1362980.37	40.3246954	-104.4143361	0.00	
4123.00†	14.735	216.033	4031.49	-287.86	-597.86	-434.90	3302682.25	1362959.62	40.3246389	-104.4143897	0.00	
4223.00†	14.735	216.033	4128.21	-297.76	-618.43	-449.86	3302667.54	1362938.87	40.3245824	-104.4144434	0.00	
4323.00†	14.735	216.033	4224.92	-307.67	-639.00	-464.82	3302652.83	1362918.12	40.3245260	-104.4144970	0.00	
4423.00†	14.735	216.033	4321.63	-317.57	-659.57	-479.79	3302638.12	1362897.37	40.3244695	-104.4145507	0.00	
4523.00†	14.735	216.033	4418.34	-327.48	-680.14	-494.75	3302623.42	1362876.62	40.3244130	-104.4146044	0.00	
4623.00†	14.735	216.033	4515.05	-337.38	-700.71	-509.71	3302608.71	1362855.87	40.3243566	-104.4146580	0.00	
4723.00†	14.735	216.033	4611.76	-347.28	-721.28	-524.67	3302594.00	1362835.12	40.3243001	-104.4147117	0.00	
4823.00†	14.735	216.033	4708.47	-357.19	-741.85	-539.64	3302579.29	1362814.38	40.3242437	-104.4147653	0.00	
4923.00†	14.735	216.033	4805.18	-367.09	-762.41	-554.60	3302564.58	1362793.63	40.3241872	-104.4148190	0.00	
5023.00†	14.735	216.033	4901.90	-376.99	-782.98	-569.56	3302549.87	1362772.88	40.3241307	-104.4148726	0.00	
5123.00†	14.735	216.033	4998.61	-386.90	-803.55	-584.52	3302535.17	1362752.13	40.3240743	-104.4149263	0.00	
5223.00†	14.735	216.033	5095.32	-396.80	-824.12	-599.48	3302520.46	1362731.38	40.3240178	-104.4149800	0.00	
5323.00†	14.735	216.033	5192.03	-406.70	-844.69	-614.45	3302505.75	1362710.63	40.3239614	-104.4150336	0.00	
5423.00†	14.735	216.033	5288.74	-416.61	-865.26	-629.41	3302491.04	1362689.88	40.3239049	-104.4150873	0.00	

# Planned Wellpath Report

BIGFOOT 11-10-3 PWP Rev-B.0

Page 4 of 8

## REFERENCE WELLPATH IDENTIFICATION

Operator	CONFLUENCE RESOURCES	Well	BIGFOOT 11-10-3
Field	WELD COUNTY (NAD83, TRUE NORTH)	API/Legal	
Facility	SEC.11-T04N-R63W	Wellbore	BIGFOOT 11-10-3 PWB
Slot	SLOT#04 BIGFOOT 11-10-3 (2380'FSL & 620'FWL,SEC.11)		

## WELLPATH DATA (121 stations) † = interpolated, ‡ = extrapolated station

MD [ft]	Inclination [°]	Azimuth [°]	TVD [ft]	Vert Sect [ft]	North [ft]	East [ft]	Grid East [US ft]	Grid North [US ft]	Latitude	Longitude	DLS [°/100ft]	Comments
5523.00†	14.735	216.033	5385.45	-426.51	-885.83	-644.37	3302476.33	1362669.13	40.3238484	-104.4151409	0.00	
5623.00†	14.735	216.033	5482.16	-436.41	-906.40	-659.33	3302461.62	1362648.38	40.3237920	-104.4151946	0.00	
5723.00†	14.735	216.033	5578.87	-446.32	-926.96	-674.30	3302446.92	1362627.63	40.3237355	-104.4152483	0.00	
5823.00†	14.735	216.033	5675.58	-456.22	-947.53	-689.26	3302432.21	1362606.88	40.3236791	-104.4153019	0.00	
5913.19	14.735	216.033	5762.81	-465.15	-966.09	-702.75	3302418.94	1362588.16	40.3236281	-104.4153503	0.00	KOP
5923.00†	14.175	212.807	5772.31	-466.04	-968.10	-704.14	3302417.58	1362586.13	40.3236226	-104.4153553	10.00	
6023.00†	12.007	168.519	5869.94	-465.84	-988.64	-708.71	3302413.26	1362565.54	40.3235662	-104.4153717	10.00	
6123.00†	16.868	132.411	5966.94	-448.81	-1008.67	-695.90	3302426.32	1362545.67	40.3235112	-104.4153257	10.00	
6223.00†	24.940	115.510	6060.36	-415.48	-1027.58	-666.08	3302456.36	1362527.12	40.3234593	-104.4152188	10.00	
6323.00†	34.006	106.834	6147.37	-366.86	-1044.81	-620.17	3302502.48	1362510.46	40.3234121	-104.4150541	10.00	
6423.00†	43.447	101.527	6225.32	-304.43	-1059.81	-559.56	3302563.26	1362496.20	40.3233709	-104.4148368	10.00	
6523.00†	53.059	97.816	6291.84	-230.08	-1072.15	-486.09	3302636.87	1362484.76	40.3233370	-104.4145733	10.00	
6623.00†	62.761	94.947	6344.91	-146.07	-1081.45	-402.00	3302721.07	1362476.50	40.3233115	-104.4142717	10.00	
6723.00†	72.511	92.543	6382.91	-54.95	-1087.41	-309.84	3302813.30	1362471.67	40.3232951	-104.4139412	10.00	
6823.00†	82.288	90.386	6404.70	40.50	-1089.87	-212.40	3302910.75	1362470.41	40.3232884	-104.4135917	10.00	
6901.80	90.000	88.762	6410.00†	116.87	-1089.28	-133.84	3302989.29	1362471.96	40.3232900	-104.4133100	10.00	LANDING
6923.00†	90.000	88.762	6410.00	137.41	-1088.82	-112.65	3303010.48	1362472.68	40.3232913	-104.4132340	0.00	
7023.00†	90.000	88.762	6410.00	234.29	-1086.66	-12.67	3303110.42	1362476.06	40.3232972	-104.4128754	0.00	
7123.00†	90.000	88.762	6410.00	331.16	-1084.50	87.31	3303210.36	1362479.45	40.3233031	-104.4125169	0.00	
7223.00†	90.000	88.762	6410.00	428.04	-1082.34	187.28	3303310.29	1362482.83	40.3233090	-104.4121583	0.00	
7323.00†	90.000	88.762	6410.00	524.92	-1080.18	287.26	3303410.23	1362486.22	40.3233150	-104.4117998	0.00	
7423.00†	90.000	88.762	6410.00	621.79	-1078.02	387.24	3303510.17	1362489.61	40.3233209	-104.4114413	0.00	
7523.00†	90.000	88.762	6410.00	718.67	-1075.86	487.21	3303610.11	1362492.99	40.3233268	-104.4110827	0.00	
7623.00†	90.000	88.762	6410.00	815.55	-1073.70	587.19	3303710.05	1362496.38	40.3233328	-104.4107242	0.00	
7723.00†	90.000	88.762	6410.00	912.43	-1071.54	687.17	3303809.99	1362499.76	40.3233387	-104.4103656	0.00	
7823.00†	90.000	88.762	6410.00	1009.30	-1069.38	787.14	3303909.92	1362503.15	40.3233446	-104.4100071	0.00	
7923.00†	90.000	88.762	6410.00	1106.18	-1067.22	887.12	3304009.86	1362506.54	40.3233505	-104.4096485	0.00	
8023.00†	90.000	88.762	6410.00	1203.06	-1065.05	987.10	3304109.80	1362509.92	40.3233564	-104.4092900	0.00	
8123.00†	90.000	88.762	6410.00	1299.94	-1062.89	1087.07	3304209.74	1362513.31	40.3233624	-104.4089314	0.00	
8223.00†	90.000	88.762	6410.00	1396.81	-1060.73	1187.05	3304309.68	1362516.69	40.3233683	-104.4085729	0.00	

# Planned Wellpath Report

BIGFOOT 11-10-3 PWP Rev-B.0

Page 5 of 8

## REFERENCE WELLPATH IDENTIFICATION

Operator	CONFLUENCE RESOURCES	Well	BIGFOOT 11-10-3
Field	WELD COUNTY (NAD83, TRUE NORTH)	API/Legal	
Facility	SEC.11-T04N-R63W	Wellbore	BIGFOOT 11-10-3 PWB
Slot	SLOT#04 BIGFOOT 11-10-3 (2380'FSL & 620'FWL,SEC.11)		

## WELLPATH DATA (121 stations) † = interpolated, ‡ = extrapolated station

MD [ft]	Inclination [°]	Azimuth [°]	TVD [ft]	Vert Sect [ft]	North [ft]	East [ft]	Grid East [US ft]	Grid North [US ft]	Latitude	Longitude	DLS [°/100ft]	Comments
8323.00†	90.000	88.762	6410.00	1493.69	-1058.57	1287.03	3304409.62	1362520.08	40.3233742	-104.4082143	0.00	
8423.00†	90.000	88.762	6410.00	1590.57	-1056.41	1387.00	3304509.55	1362523.46	40.3233801	-104.4078558	0.00	
8523.00†	90.000	88.762	6410.00	1687.45	-1054.25	1486.98	3304609.49	1362526.85	40.3233860	-104.4074972	0.00	
8623.00†	90.000	88.762	6410.00	1784.32	-1052.09	1586.96	3304709.43	1362530.24	40.3233919	-104.4071387	0.00	
8723.00†	90.000	88.762	6410.00	1881.20	-1049.93	1686.93	3304809.37	1362533.62	40.3233979	-104.4067801	0.00	
8823.00†	90.000	88.762	6410.00	1978.08	-1047.77	1786.91	3304909.31	1362537.01	40.3234038	-104.4064216	0.00	
8923.00†	90.000	88.762	6410.00	2074.96	-1045.61	1886.89	3305009.24	1362540.39	40.3234097	-104.4060630	0.00	
9023.00†	90.000	88.762	6410.00	2171.83	-1043.45	1986.86	3305109.18	1362543.78	40.3234156	-104.4057045	0.00	
9123.00†	90.000	88.762	6410.00	2268.71	-1041.29	2086.84	3305209.12	1362547.17	40.3234215	-104.4053459	0.00	
9223.00†	90.000	88.762	6410.00	2365.59	-1039.13	2186.82	3305309.06	1362550.55	40.3234274	-104.4049874	0.00	
9323.00†	90.000	88.762	6410.00	2462.46	-1036.97	2286.79	3305409.00	1362553.94	40.3234333	-104.4046288	0.00	
9423.00†	90.000	88.762	6410.00	2559.34	-1034.81	2386.77	3305508.94	1362557.32	40.3234392	-104.4042703	0.00	
9523.00†	90.000	88.762	6410.00	2656.22	-1032.65	2486.75	3305608.87	1362560.71	40.3234451	-104.4039117	0.00	
9623.00†	90.000	88.762	6410.00	2753.10	-1030.49	2586.72	3305708.81	1362564.10	40.3234510	-104.4035532	0.00	
9723.00†	90.000	88.762	6410.00	2849.97	-1028.33	2686.70	3305808.75	1362567.48	40.3234569	-104.4031946	0.00	
9823.00†	90.000	88.762	6410.00	2946.85	-1026.16	2786.68	3305908.69	1362570.87	40.3234628	-104.4028361	0.00	
9923.00†	90.000	88.762	6410.00	3043.73	-1024.00	2886.65	3306008.63	1362574.25	40.3234687	-104.4024775	0.00	
10023.00†	90.000	88.762	6410.00	3140.61	-1021.84	2986.63	3306108.57	1362577.64	40.3234746	-104.4021190	0.00	
10123.00†	90.000	88.762	6410.00	3237.48	-1019.68	3086.61	3306208.50	1362581.03	40.3234805	-104.4017604	0.00	
10223.00†	90.000	88.762	6410.00	3334.36	-1017.52	3186.58	3306308.44	1362584.41	40.3234864	-104.4014019	0.00	
10323.00†	90.000	88.762	6410.00	3431.24	-1015.36	3286.56	3306408.38	1362587.80	40.3234923	-104.4010433	0.00	
10423.00†	90.000	88.762	6410.00	3528.12	-1013.20	3386.54	3306508.32	1362591.18	40.3234982	-104.4006848	0.00	
10523.00†	90.000	88.762	6410.00	3624.99	-1011.04	3486.51	3306608.26	1362594.57	40.3235041	-104.4003262	0.00	
10623.00†	90.000	88.762	6410.00	3721.87	-1008.88	3586.49	3306708.19	1362597.96	40.3235100	-104.3999677	0.00	
10723.00†	90.000	88.762	6410.00	3818.75	-1006.72	3686.47	3306808.13	1362601.34	40.3235159	-104.3996091	0.00	
10823.00†	90.000	88.762	6410.00	3915.63	-1004.56	3786.44	3306908.07	1362604.73	40.3235218	-104.3992506	0.00	
10923.00†	90.000	88.762	6410.00	4012.50	-1002.40	3886.42	3307008.01	1362608.11	40.3235276	-104.3988920	0.00	
11023.00†	90.000	88.762	6410.00	4109.38	-1000.24	3986.40	3307107.95	1362611.50	40.3235335	-104.3985335	0.00	
11123.00†	90.000	88.762	6410.00	4206.26	-998.08	4086.37	3307207.89	1362614.89	40.3235394	-104.3981749	0.00	
11223.00†	90.000	88.762	6410.00	4303.13	-995.92	4186.35	3307307.82	1362618.27	40.3235453	-104.3978164	0.00	





# Planned Wellpath Report

BIGFOOT 11-10-3 PWP Rev-B.0

Page 6 of 8



## REFERENCE WELLPATH IDENTIFICATION

Operator	CONFLUENCE RESOURCES	Well	BIGFOOT 11-10-3
Field	WELD COUNTY (NAD83, TRUE NORTH)	API/Legal	
Facility	SEC.11-T04N-R63W	Wellbore	BIGFOOT 11-10-3 PWB
Slot	SLOT#04 BIGFOOT 11-10-3 (2380'FSL & 620'FWL,SEC.11)		

## WELLPATH DATA (121 stations)

MD [ft]	Inclination [°]	Azimuth [°]	TVD [ft]	Vert Sect [ft]	North [ft]	East [ft]	Grid East [US ft]	Grid North [US ft]	Latitude	Longitude	DLS [°/100ft]	Comments
11302.87	90.000	88.762	6410.00 <sup>2</sup>	4380.51	-994.19	4266.20	3307387.65	1362620.98	40.3235500	-104.3975300	0.00	TD

## HOLE & CASING SECTIONS

- Ref Wellbore: BIGFOOT 11-10-3 PWB      Ref Wellpath: BIGFOOT 11-10-3 PWP Rev-B.0

String/Diameter	Start MD [ft]	End MD [ft]	Interval [ft]	Start TVD [ft]	End TVD [ft]	Start N/S [ft]	Start E/W [ft]	End N/S [ft]	End E/W [ft]
9.625in Casing Surface	23.00	1712.22	1689.22	23.00	1700.00	0.00	0.00	-102.00	-74.20

## TARGETS

Name	MD [ft]	TVD [ft]	North [ft]	East [ft]	Grid East [US ft]	Grid North [US ft]	Latitude	Longitude	Shape
SEC.11-T04N-R63W	N/A	-2.50	72.86	0.00	3303108.87	1363635.60	40.3264800	-104.4128300	polygon
	2D Polygon: dimensions not calculated								
SEC.11-T04N-R63W 470' SETBACK	N/A	-2.50	72.86	0.00	3303108.87	1363635.60	40.3264800	-104.4128300	polygon
	2D Polygon: dimensions not calculated								
2) BIGFOOT 11-10-3 BHL REV-1 (1296'FSL & 470'FEL,SEC.11)	11302.87	6410.00	-994.19	4266.20	3307387.65	1362620.98	40.3235500	-104.3975300	point
1) BIGFOOT 11-10-3 LP REV-1 (1296'FSL & 470'FWL,SEC.11)	6901.80	6410.00	-1089.28	-133.84	3302989.29	1362471.96	40.3232900	-104.4133100	point



# Planned Wellpath Report

BIGFOOT 11-10-3 PWP Rev-B.0

Page 7 of 8



## REFERENCE WELLPATH IDENTIFICATION

Operator	CONFLUENCE RESOURCES	Well	BIGFOOT 11-10-3
Field	WELD COUNTY (NAD83, TRUE NORTH)	API/Legal	
Facility	SEC.11-T04N-R63W	Wellbore	BIGFOOT 11-10-3 PWB
Slot	SLOT#04 BIGFOOT 11-10-3 (2380'FSL & 620'FWL,SEC.11)		

## SURVEY PROGRAM - Ref Wellbore: BIGFOOT 11-10-3 PWB Ref Wellpath: BIGFOOT 11-10-3 PWP Rev-B.0

Start MD [ft]	End MD [ft]	Positional Uncertainty Model	Log Name/Comment	Wellbore
23.00	1712.22	BH NaviTrak (2019) (Axial)		BIGFOOT 11-10-3 PWB
1712.22	11302.87	BH AutoTrak Curve/eXpress (2019) (Short spacing)		BIGFOOT 11-10-3 PWB





# Planned Wellpath Report

BIGFOOT 11-10-3 PWP Rev-B.0

Page 8 of 8



## REFERENCE WELLPATH IDENTIFICATION

Operator	CONFLUENCE RESOURCES	Well	BIGFOOT 11-10-3
Field	WELD COUNTY (NAD83, TRUE NORTH)	API/Legal	
Facility	SEC.11-T04N-R63W	Wellbore	BIGFOOT 11-10-3 PWB
Slot	SLOT#04 BIGFOOT 11-10-3 (2380'FSL & 620'FWL,SEC.11)		

## DESIGN COMMENTS

MD [ft]	Inclination [°]	Azimuth [°]	TVD [ft]	Comment
23.00	0.000	216.033	23.00	Tie On
850.00	0.000	216.033	850.00	End of Tangent
1586.75	14.735	216.033	1578.66	End of Build (J)
1712.22	14.735	216.033	1700.00	End of Tangent (J)
1812.22	14.735	216.033	1796.71	End of Tangent
5913.19	14.735	216.033	5762.81	KOP
6901.80	90.000	88.762	6410.00	LANDING
11302.87	90.000	88.762	6410.00	TD



# Closest Approach Clearance Summary Report

BIGFOOT 11-10-3 PWP Rev-B.0 - SPE WPTS Stop  
Drilling HSE Risk (2017)  
Page 1 of 3



REFERENCE WELLPATH IDENTIFICATION			
Operator	CONFLUENCE RESOURCES	Well	BIGFOOT 11-10-3
Field	WELD COUNTY (NAD83, TRUE NORTH)	API/Legal	
Facility	SEC.11-T04N-R63W	Wellbore	BIGFOOT 11-10-3 PWB
Slot	SLOT#04 BIGFOOT 11-10-3 (2380'FSL & 620'FWL,SEC.11)		

REPORT SETUP INFORMATION			
Projection System	NAD83 / Lambert Colorado SP, Northern Zone (501), US feet	Software System	WellArchitect® 6.0
North Reference	True	User	Painsetr
Scale	0.999958	Report Generated	4/26/2022 at 1:39:21 PM
Convergence at slot	0.70° East	Database	WellArchitectDB

WELLPATH LOCATION						
	Local coordinates		Grid coordinates		Geographic coordinates	
	North[ft]	East[ft]	Easting[US ft]	Northing[US ft]	Latitude	Longitude
Slot Location	-72.86	0.00	3303109.77	1363562.75	40.3262800°	-104.4128300°
Facility Reference Pt			3303108.87	1363635.60	40.3264800°	-104.4128300°
Field Reference Pt			3230456.90	1245096.09	40.0032400°	-104.6773400°

WELLPATH DATUM			
Calculation method	Minimum Curvature	Rig (23') (KB) to Facility Vertical Datum	4639.00ft
Horizontal Reference Pt	Slot	Rig (23') (KB) to Mean Sea Level	4639.00ft
Vertical Reference Pt	Rig (23') (KB)	Rig (23') (KB) to Ground Level at Slot (SLOT#04 BIGFOOT 11-10-3 (2380'FSL & 620'FWL,SEC.11))	23.00ft
MD Reference Pt	Rig (23') (KB)		
Field Vertical Reference	Mean Sea Level		

POSITIONAL UNCERTAINTY CALCULATION SETTINGS					
Ellipse Confidence Limit	3.50 Std Dev	Ellipse Start MD	23.00ft	Surface Position Uncertainty	included
Declination	7.76° East of TN	Dip Angle	66.72°	Mag Field Strength	51850 nT
Slot Surface Uncertainty @1SD		Horizontal	0.100ft	Vertical	1.000ft
Facility Surface Uncertainty @1SD		Horizontal	8.200ft	Vertical	3.000ft
Positional Uncertainty values in the WELLPATH DATA table are the projection of the ellipsoid of uncertainty onto the vertical and horizontal planes					



# Closest Approach Clearance Summary Report

BIGFOOT 11-10-3 PWP Rev-B.0 - SPE WPTS Stop  
Drilling HSE Risk (2017)  
Page 2 of 3



REFERENCE WELLPATH IDENTIFICATION			
Operator	CONFLUENCE RESOURCES	Well	BIGFOOT 11-10-3
Field	WELD COUNTY (NAD83, TRUE NORTH)	API/Legal	
Facility	SEC.11-T04N-R63W	Wellbore	BIGFOOT 11-10-3 PWB
Slot	SLOT#04 BIGFOOT 11-10-3 (2380'FSL & 620'FWL,SEC.11)		

PROXIMITY-SCAN RULE			
Rule Name	SPE WPTS Stop Drilling HSE Risk (2017)	Rule Based On	Ratio
Plane of Rule	Closest Approach	Threshold Value	1.00
Include Casing & Hole Size	yes	Apply Cone of Safety	no

HOLE & CASING SECTIONS									
- Ref Wellbore: BIGFOOT 11-10-3 PWB      Ref Wellpath: BIGFOOT 11-10-3 PWP Rev-B.0									
String/Diameter	Start MD [ft]	End MD [ft]	Interval [ft]	Start TVD [ft]	End TVD [ft]	Start N/S [ft]	Start E/W [ft]	End N/S [ft]	End E/W [ft]
9.625in Casing Surface	23.00	1712.22	1689.22	23.00	1700.00	0.00	0.00	-102.00	-74.20

SURVEY PROGRAM - Ref Wellbore: BIGFOOT 11-10-3 PWB      Ref Wellpath: BIGFOOT 11-10-3 PWP Rev-B.0				
Start MD [ft]	End MD [ft]	Positional Uncertainty Model	Log Name/Comment	Wellbore
23.00	1712.22	BH NaviTrak (2019) (Axial)		BIGFOOT 11-10-3 PWB
1712.22	11302.87	BH AutoTrak Curve/eXpress (2019) (Short spacing)		BIGFOOT 11-10-3 PWB



# Closest Approach Clearance Summary Report

BIGFOOT 11-10-3 PWP Rev-B.0 - SPE WPTS Stop  
Drilling HSE Risk (2017)  
Page 3 of 3



REFERENCE WELLPATH IDENTIFICATION			
Operator	CONFLUENCE RESOURCES	Well	BIGFOOT 11-10-3
Field	WELD COUNTY (NAD83, TRUE NORTH)	API/Legal	
Facility	SEC.11-T04N-R63W	Wellbore	BIGFOOT 11-10-3 PWB
Slot	SLOT#04 BIGFOOT 11-10-3 (2380'FSL & 620'FWL,SEC.11)		

CALCULATION RANGE & CUTOFF		
From: 23.00ft MD	To: 11302.87ft MD	C-C Cutoff: (none)

OFFSET WELL CLEARANCE SUMMARY (17 Offset Wellpaths selected) Ratios are calculated in Closest Approach plane												
Offset Facility	Offset Slot	Offset Well	Offset Wellbore	Offset Wellpath	Wellbore Status	C-C Clearance Distance			Rule Separation Ratio			
						Ref MD [ft]	Min C-C Clear Dist [ft]	Diverging from MD [ft]	Ref MD of Min Ratio [ft]	Min Ratio	Min Ratio Dvrg from [ft]	Rule Status
SEC.11-T04N-R63W	SLOT#03 BIGFOOT 11-9-2 (2405'FSL & 620'FWL,SEC.11)	BIGFOOT 11-9-2	BIGFOOT 11-9-2 PWB	BIGFOOT 11-9-2 PWP Rev-B.0	Planned	23.00	25.50	11302.87	11302.87	0.85	11302.87	FAIL
SEC.11-T04N-R63W	SLOT#05 BIGFOOT 11-11-1 (2355'FSL & 620'FWL,SEC.11)	BIGFOOT 11-11-1	BIGFOOT 11-11-1 PWB	BIGFOOT 11-11-1 PWP Rev-B.0	Planned	23.00	25.50	11223.00	11302.87	0.88	11302.87	FAIL
SEC.11-T04N-R63W	SLOT#06 BIGFOOT 11-5-4 (2330'FSL & 620'FWL,SEC.11)	BIGFOOT 11-5-4	BIGFOOT 11-5-4 PWB	BIGFOOT 11-5-4 PWP Rev-B.0	Planned	23.00	51.00	11223.00	11302.87	1.29	11302.87	PASS
SEC.11-T04N-R63W	SLOT#02 BIGFOOT 11-4-4 (2430'FSL & 620'FWL,SEC.11)	BIGFOOT 11-4-4	BIGFOOT 11-4-4 PWB	BIGFOOT 11-4-4 PWP Rev-B.0	Planned	23.00	47.36	11302.87	11302.87	1.48	11302.87	PASS
SEC.11-T04N-R63W	SLOT#07 BIGFOOT 11-12-2 (2305'FSL & 620'FWL,SEC.11)	BIGFOOT 11-12-2	BIGFOOT 11-12-2 PWB	BIGFOOT 11-12-2 PWP Rev-B.0	Planned	23.00	76.56	11223.00	11302.87	1.82	11302.87	PASS
SEC.11-T04N-R63W	SLOT#01 BIGFOOT 11-8-1 (2455'FSL & 620'FWL,SEC.11)	BIGFOOT 11-8-1	BIGFOOT 11-8-1 PWB	BIGFOOT 11-8-1 PWP Rev-B.0	Planned	23.00	72.86	11302.87	11302.87	1.93	11302.87	PASS
SEC.11-T04N-R63W	SLOT#20 BIGFOOT 11-7-3 (2281'FSL & 470'FWL,SEC.11)	BIGFOOT 11-7-3	BIGFOOT 11-7-3 PWB	BIGFOOT 11-7-3 PWP Rev-B.0	Planned	1772.43	136.89	11302.87	11302.87	2.60	11302.87	PASS
SEC.11-T04N-R63W	SLOT#08 BIGFOOT 11-13-3 (2280'FSL & 620'FWL,SEC.11)	BIGFOOT 11-13-3	BIGFOOT 11-13-3 PWB	BIGFOOT 11-13-3 PWP Rev-B.0	Planned	23.00	102.04	523.00	11302.87	2.61	11302.87	PASS
SEC.11-T04N-R63W	SLOT#19 BIGFOOT 11-6-2 (2306'FSL & 470'FWL,SEC.11)	BIGFOOT 11-6-2	BIGFOOT 11-6-2 PWB	BIGFOOT 11-6-2 PWP Rev-B.0	Planned	1559.13	146.74	1559.13	11302.87	3.43	11302.87	PASS
SEC.11-T04N-R63W	SLOT#18 BIGFOOT 11-3-4 (2331'FSL & 470'FWL,SEC.11)	BIGFOOT 11-3-4	BIGFOOT 11-3-4 PWB	BIGFOOT 11-3-4 PWP Rev-B.0	Planned	1305.05	148.39	1305.05	11302.87	4.05	11302.87	PASS
SEC.11-T04N-R63W	SLOT#17 BIGFOOT 11-5-1 (2356'FSL & 470'FWL,SEC.11)	BIGFOOT 11-5-1	BIGFOOT 11-5-1 PWB	BIGFOOT 11-5-1 PWP Rev-B.0	Planned	1171.75	150.81	1171.75	11302.87	4.55	11302.87	PASS
SEC.11-T04N-R63W	SLOT#16 BIGFOOT 11-4-3 (2381'FSL & 470'FWL,SEC.11)	BIGFOOT 11-4-3	BIGFOOT 11-4-3 PWB	BIGFOOT 11-4-3 PWP Rev-B.0	Planned	23.00	150.61	723.00	11302.87	5.23	11302.87	PASS
SEC.11-T04N-R63W	SLOT#15 BIGFOOT 11-3-2 (2406'FSL & 470'FWL,SEC.11)	BIGFOOT 11-3-2	BIGFOOT 11-3-2 PWB	BIGFOOT 11-3-2 PWP Rev-B.0	Planned	23.00	152.14	723.00	11302.87	6.04	11302.87	PASS
SEC.11-T04N-R63W	SLOT#14 BIGFOOT 11-2-4 (2431'FSL & 470'FWL,SEC.11)	BIGFOOT 11-2-4	BIGFOOT 11-2-4 PWB	BIGFOOT 11-2-4 PWP Rev-B.0	Planned	23.00	157.84	623.00	11302.87	6.65	11302.87	PASS
SEC.10-T04N-R63W	SLOT#02 70 RANCH 10-11-2 (2360'FNL & 514'FEL, SEC.10)	70 RANCH 10-11-2	70 RANCH 10-11-2 AWB	70 RANCH 10-11-2 AWP	Drilling	2046.21	1181.52	11302.87	11302.87	7.88	11302.87	PASS

OFFSET WELL CLEARANCE SUMMARY (17 Offset Wellpaths selected) Ratios are calculated in Closest Approach plane												
Offset Facility	Offset Slot	Offset Well	Offset Wellbore	Offset Wellpath	Wellbore Status	C-C Clearance Distance			Rule Separation Ratio			
						Ref MD [ft]	Min C-C Clear Dist [ft]	Diverging from MD [ft]	Ref MD of Min Ratio [ft]	Min Ratio	Min Ratio Dvrg from [ft]	Rule Status
SEC.10-T04N-R63W	SLOT#01 70 RANCH 10-11-1 (2345'FNL & 514'FEL, SEC.10)	70 RANCH 10-11-1	70 RANCH 10-11-1 AWB	70 RANCH 10-11-1 AWP	Drilling	23.00	1234.82	11302.87	11302.87	9.19	11302.87	PASS
SEC.11-T04N-R63W	SLOT#13 BIGFOOT 11-1-4 (2456'FSL & 470'FWL,SEC.11)	BIGFOOT 11-1-4	BIGFOOT 11-1-4 PWB	BIGFOOT 11-1-4 PWP Rev-B.0	Planned	23.00	167.27	223.00	11302.87	9.51	11302.87	PASS