

CONFLUENCE RESOURCES



Location:	COLORADO	Slot:	SLOT#03 BIGFOOT 11-9-2 (2405'FSL & 620'FWL,SEC.11)
Field:	WELD COUNTY (NAD83, TRUE NORTH)	Well:	BIGFOOT 11-9-2
Facility:	SEC.11-T04N-R63W	Wellbore:	BIGFOOT 11-9-2 PWB

Plot reference wellpath is BIGFOOT 11-9-2 PWP RevB.0	Grid System: NAD83 / Lambert Colorado SP, Northern Zone (501), US feet
True vertical depths are referenced to Rig (23) (KB)	North Reference: True north
Reference wellpath measured depths are referenced to Rig (23) (KB)	Scale: True distance
Rig (23) (KB) to Mean Sea Level: 4639 feet	Coordinates are in feet referenced to Slot
Mean Sea Level to Ground level (At Slot: SLOT#03 BIGFOOT 11-9-2 (2405'FSL & 620'FWL,SEC.11)): -4616 feet	Depths are in feet
Offset wellpath MDs are referenced to each path's default MD datum	Created by: painseir on 2022-04-26; Database: WellArchitectDB

Location Information

Facility Name	Grid East (US ft)	Grid North (US ft)	Latitude	Longitude
SEC.11-T04N-R63W	3303108.873	1363635.600	40°19'35.3280"N	104°24'46.1880"W
Slot	Local N (ft)	Local E (ft)	Grid East (US ft)	Grid North (US ft)
SLOT#03 BIGFOOT 11-9-2 (2405'FSL & 620'FWL,SEC.11)	-47.36	0.00	3303109.454	1363588.246
Rig (23) (KB) to Ground level (At Slot: SLOT#03 BIGFOOT 11-9-2 (2405'FSL & 620'FWL,SEC.11))			40°19'34.8600"N	104°24'46.1880"W
Mean Sea Level to Ground level (At Slot: SLOT#03 BIGFOOT 11-9-2 (2405'FSL & 620'FWL,SEC.11))			23ft	
Rig (23) (KB) to Mean Sea Level			-4616ft	
			4639ft	

Hole and Casing Sections

Name	Start MD (ft)	End MD (ft)	Interval (ft)	Start TVD (ft)	End TVD (ft)	Start Local N (ft)	Start Local E (ft)	End Local N (ft)	End Local E (ft)	Wellbore
9.625in Casing Surface	23.00	1709.34	1686.34	23.00	1700.00	0.00	0.00	-76.01	-76.63	BIGFOOT 11-9-2 PWB

Survey Program

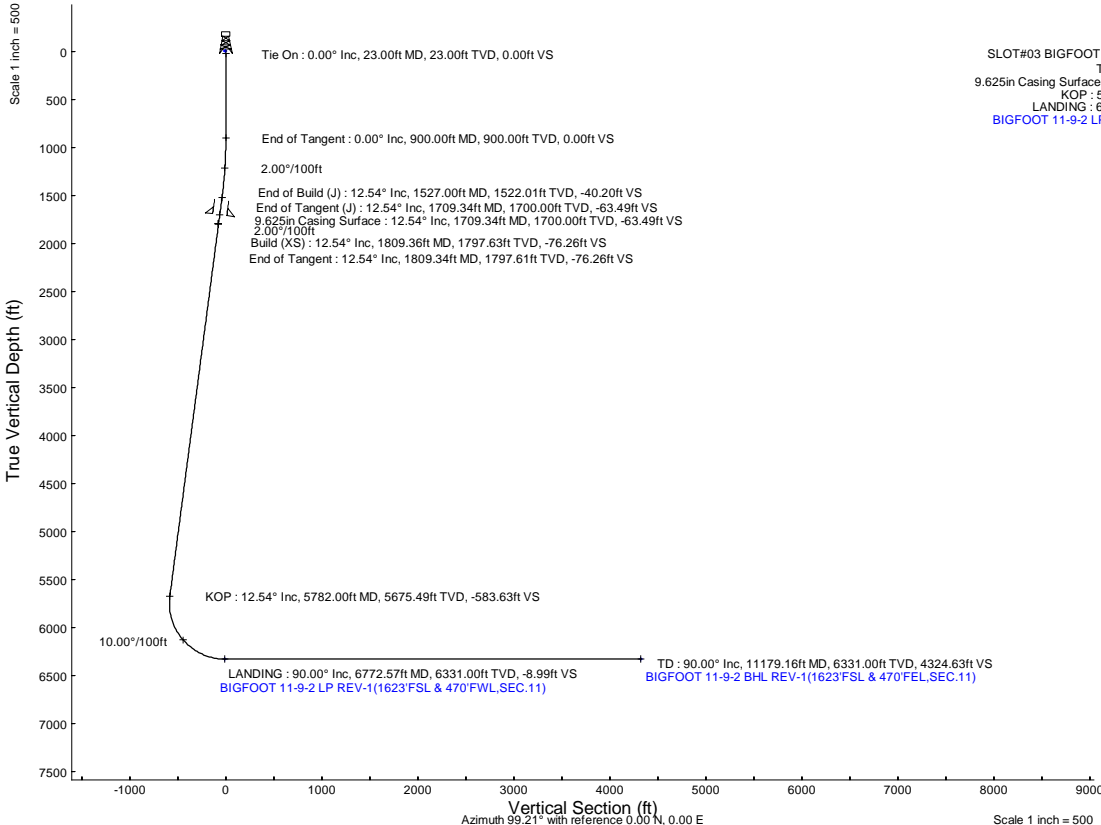
Start MD (ft)	End MD (ft)	Tool	Model	Log Name/Comment	Wellbore
23.00	1709.34	BH NavitTrak (2019)	BH NavitTrak (2019) (Axial)		BIGFOOT 11-9-2 PWB
1709.34	11179.16	BH AutoTrak Curve/eXpress (2019)	BH AutoTrak Curve/eXpress (2019) (Short spacing)		BIGFOOT 11-9-2 PWB

Bottom Hole Location

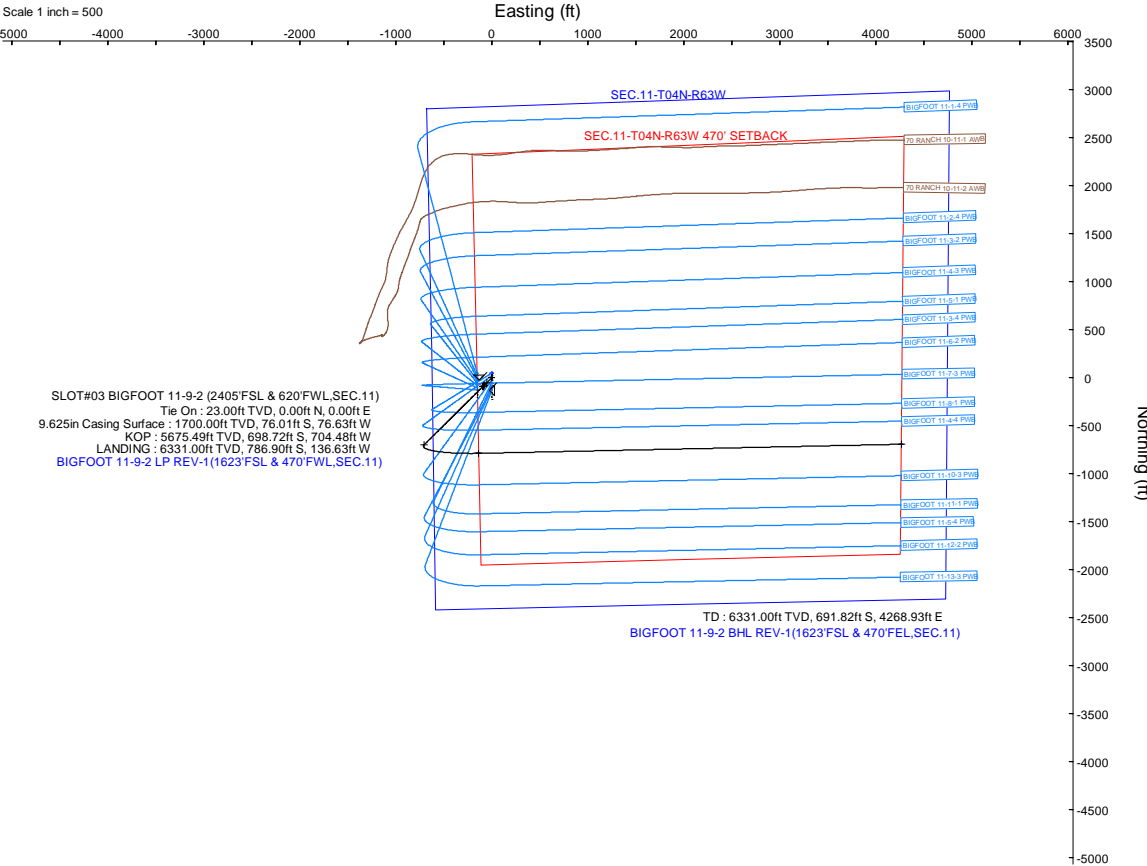
MD (ft)	Inc (°)	Az (°)	TVD (ft)	Local N (ft)	Local E (ft)	Grid East (US ft)	Grid North (US ft)	Latitude	Longitude
11179.16	90.000	88.764	6331.00	-691.82	4268.93	3307386.36	1362948.85	40°19'28.0200"N	104°23'51.0720"W

Targets

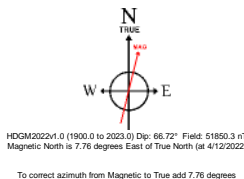
Name	MD (ft)	TVD (ft)	Local N (ft)	Local E (ft)	Grid East (US ft)	Grid North (US ft)	Latitude	Longitude
SEC.11-T04N-R63W	N/A	-2.50	47.36	0.00	3303108.87	1363635.60	40°19'35.3280"N	104°24'46.1880"W
SEC.11-T04N-R63W 470' SETBACK	N/A	-2.50	47.36	0.00	3303108.87	1363635.60	40°19'35.3280"N	104°24'46.1880"W
BIGFOOT 11-9-2 BHL REV-1(1623'FSL & 470'FEL,SEC.11)	11179.16	6331.00	-691.82	4268.93	3307386.36	1362948.85	40°19'28.0200"N	104°23'51.0720"W
BIGFOOT 11-9-2 LP REV-1(1623'FSL & 470'FWL,SEC.11)	6772.57	6331.00	-786.90	-136.63	3302982.49	1362799.76	40°19'27.0840"N	104°24'47.9520"W



Well Profile Data								
Design Comment	MD (ft)	Inc (°)	Az (°)	TVD (ft)	Local N (ft)	Local E (ft)	DLS (°/100ft)	VS (ft)
Tie On	23.00	0.000	225.235	23.00	0.00	0.00	0.00	0.00
End of Tangent	900.00	0.000	225.235	900.00	0.00	0.00	0.00	0.00
End of Build (J)	1527.00	12.540	225.235	1522.01	-48.13	-48.52	2.00	-40.20
End of Tangent (J)	1709.34	12.540	225.235	1700.00	-76.01	-76.63	0.00	-63.49
End of Tangent	1809.34	12.540	225.235	1797.61	-91.29	-92.05	0.00	-76.26
Build (XS)	1809.36	12.540	225.235	1797.63	-91.30	-92.05	2.00	-76.26
KOP	5782.00	12.540	225.235	5675.49	-698.72	-704.48	0.00	-583.63
LANDING	6772.57	90.000	88.764	6331.00	-786.90	-136.63	10.00	-8.99
TD	11179.16	90.000	88.764	6331.00	-691.82	4268.93	0.00	4324.63



SLOT#03 BIGFOOT 11-9-2 (2405'FSL & 620'FWL,SEC.11)
Tie On : 23.00ft TVD, 0.00ft N, 0.00ft E
9.625in Casing Surface : 1700.00ft TVD, 76.01ft S, 76.63ft W
KOP : 5675.49ft TVD, 698.72ft S, 704.48ft W
LANDING : 6331.00ft TVD, 786.90ft S, 136.63ft W
BIGFOOT 11-9-2 LP REV-1(1623'FSL & 470'FWL,SEC.11)



HOGM2022v4.0 (1900.0 to 2023.0) Dp: 66.72° Field: 51850.3 nT
Magnetic North is 7.76 degrees East of True North (at 4/12/2022)
To correct azimuth from Magnetic to True add 7.76 degrees



Planned Wellpath Report

BIGFOOT 11-9-2 PWP Rev-B.0

Page 1 of 8



REFERENCE WELLPATH IDENTIFICATION

Operator	CONFLUENCE RESOURCES	Well	BIGFOOT 11-9-2
Field	WELD COUNTY (NAD83, TRUE NORTH)	API/Legal	
Facility	SEC.11-T04N-R63W	Wellbore	BIGFOOT 11-9-2 PWB
Slot	SLOT#03 BIGFOOT 11-9-2 (2405'FSL & 620'FWL,SEC.11)		

REPORT SETUP INFORMATION

Projection System	NAD83 / Lambert Colorado SP, Northern Zone (501), US feet	Software System	WellArchitect® 6.0
North Reference	True	User	Painsetr
Scale	0.999958	Report Generated	4/26/2022 at 1:34:42 PM
Convergence at slot	0.70° East	Database	WellArchitectDB

WELLPATH LOCATION

	Local coordinates		Grid coordinates		Geographic coordinates	
	North[ft]	East[ft]	Easting[US ft]	Northing[US ft]	Latitude	Longitude
Slot Location	-47.36	0.00	3303109.45	1363588.25	40.3263500°	-104.4128300°
Facility Reference Pt			3303108.87	1363635.60	40.3264800°	-104.4128300°
Field Reference Pt			3230456.90	1245096.09	40.0032400°	-104.6773400°

WELLPATH DATUM

Calculation method	Minimum curvature	Rig (23') (KB) to Facility Vertical Datum	4639.00ft
Horizontal Reference Pt	Slot	Rig (23') (KB) to Mean Sea Level	4639.00ft
Vertical Reference Pt	Rig (23') (KB)	Rig (23') (KB) to Ground Level at Slot (SLOT#03 BIGFOOT 11-9-2 (2405'FSL & 620'FWL,SEC.11))	23.00ft
MD Reference Pt	Rig (23') (KB)	Section Origin	N 0.00, E 0.00 ft
Field Vertical Reference	Mean Sea Level	Section Azimuth	99.21°

Planned Wellpath Report

BIGFOOT 11-9-2 PWP Rev-B.0

Page 2 of 8

REFERENCE WELLPATH IDENTIFICATION

Operator	CONFLUENCE RESOURCES	Well	BIGFOOT 11-9-2
Field	WELD COUNTY (NAD83, TRUE NORTH)	API/Legal	
Facility	SEC.11-T04N-R63W	Wellbore	BIGFOOT 11-9-2 PWB
Slot	SLOT#03 BIGFOOT 11-9-2 (2405'FSL & 620'FWL,SEC.11)		

WELLPATH DATA (121 stations) † = interpolated, ‡ = extrapolated station

MD [ft]	Inclination [°]	Azimuth [°]	TVD [ft]	Vert Sect [ft]	North [ft]	East [ft]	Grid East [US ft]	Grid North [US ft]	Latitude	Longitude	DLS [°/100ft]	Comments
0.00†	0.000	225.235	0.00	0.00	0.00	0.00	3303109.45	1363588.25	40.3263500	-104.4128300	0.00	
23.00	0.000	225.235	23.00	0.00	0.00	0.00	3303109.45	1363588.25	40.3263500	-104.4128300	0.00	Tie On
123.00†	0.000	225.235	123.00	0.00	0.00	0.00	3303109.45	1363588.25	40.3263500	-104.4128300	0.00	
223.00†	0.000	225.235	223.00	0.00	0.00	0.00	3303109.45	1363588.25	40.3263500	-104.4128300	0.00	
323.00†	0.000	225.235	323.00	0.00	0.00	0.00	3303109.45	1363588.25	40.3263500	-104.4128300	0.00	
423.00†	0.000	225.235	423.00	0.00	0.00	0.00	3303109.45	1363588.25	40.3263500	-104.4128300	0.00	
523.00†	0.000	225.235	523.00	0.00	0.00	0.00	3303109.45	1363588.25	40.3263500	-104.4128300	0.00	
623.00†	0.000	225.235	623.00	0.00	0.00	0.00	3303109.45	1363588.25	40.3263500	-104.4128300	0.00	
723.00†	0.000	225.235	723.00	0.00	0.00	0.00	3303109.45	1363588.25	40.3263500	-104.4128300	0.00	
823.00†	0.000	225.235	823.00	0.00	0.00	0.00	3303109.45	1363588.25	40.3263500	-104.4128300	0.00	
900.00	0.000	225.235	900.00	0.00	0.00	0.00	3303109.45	1363588.25	40.3263500	-104.4128300	0.00	End of Tangent
923.00†	0.460	225.235	923.00	-0.05	-0.07	-0.07	3303109.39	1363588.18	40.3263498	-104.4128302	2.00	
1023.00†	2.460	225.235	1022.96	-1.55	-1.86	-1.87	3303107.60	1363586.36	40.3263449	-104.4128367	2.00	
1123.00†	4.460	225.235	1122.77	-5.10	-6.11	-6.16	3303103.37	1363582.06	40.3263332	-104.4128521	2.00	
1223.00†	6.460	225.235	1222.32	-10.70	-12.81	-12.91	3303096.70	1363575.28	40.3263148	-104.4128763	2.00	
1323.00†	8.460	225.235	1321.46	-18.34	-21.95	-22.13	3303087.59	1363566.03	40.3262897	-104.4129094	2.00	
1423.00†	10.460	225.235	1420.10	-28.00	-33.53	-33.80	3303076.07	1363554.31	40.3262580	-104.4129512	2.00	
1523.00†	12.460	225.235	1518.10	-39.69	-47.52	-47.91	3303062.13	1363540.15	40.3262196	-104.4130018	2.00	
1527.00	12.540	225.235	1522.01	-40.20	-48.13	-48.52	3303061.53	1363539.53	40.3262179	-104.4130040	2.00	End of Build (J)
1623.00†	12.540	225.235	1615.72	-52.46	-62.80	-63.32	3303046.91	1363524.67	40.3261776	-104.4130571	0.00	
1709.34	12.540	225.235	1700.00	-63.49	-76.01	-76.63	3303033.76	1363511.31	40.3261414	-104.4131048	0.00	End of Tangent (J)
1723.00†	12.540	225.235	1713.33	-65.23	-78.09	-78.74	3303031.68	1363509.20	40.3261356	-104.4131124	0.00	
1809.34	12.540	225.235	1797.61	-76.26	-91.29	-92.05	3303018.54	1363495.83	40.3260994	-104.4131601	0.00	End of Tangent
1809.36	12.540	225.235	1797.63	-76.26	-91.30	-92.05	3303018.53	1363495.83	40.3260994	-104.4131601	2.00	Build (XS)
1823.00†	12.540	225.235	1810.95	-78.00	-93.38	-94.15	3303016.46	1363493.72	40.3260937	-104.4131677	0.00	
1923.00†	12.540	225.235	1908.56	-90.77	-108.67	-109.57	3303001.23	1363478.24	40.3260517	-104.4132230	0.00	
2023.00†	12.540	225.235	2006.17	-103.54	-123.96	-124.98	3302986.00	1363462.77	40.3260097	-104.4132783	0.00	
2123.00†	12.540	225.235	2103.79	-116.32	-139.25	-140.40	3302970.78	1363447.29	40.3259678	-104.4133335	0.00	
2223.00†	12.540	225.235	2201.40	-129.09	-154.54	-155.82	3302955.55	1363431.81	40.3259258	-104.4133888	0.00	
2323.00†	12.540	225.235	2299.02	-141.86	-169.83	-171.23	3302940.32	1363416.33	40.3258838	-104.4134441	0.00	

Planned Wellpath Report

BIGFOOT 11-9-2 PWP Rev-B.0

Page 3 of 8

REFERENCE WELLPATH IDENTIFICATION

Operator	CONFLUENCE RESOURCES	Well	BIGFOOT 11-9-2
Field	WELD COUNTY (NAD83, TRUE NORTH)	API/Legal	
Facility	SEC.11-T04N-R63W	Wellbore	BIGFOOT 11-9-2 PWB
Slot	SLOT#03 BIGFOOT 11-9-2 (2405'FSL & 620'FWL,SEC.11)		

WELLPATH DATA (121 stations) † = interpolated, ‡ = extrapolated station

MD [ft]	Inclination [°]	Azimuth [°]	TVD [ft]	Vert Sect [ft]	North [ft]	East [ft]	Grid East [US ft]	Grid North [US ft]	Latitude	Longitude	DLS [°/100ft]	Comments
2423.00†	12.540	225.235	2396.63	-154.63	-185.12	-186.65	3302925.10	1363400.86	40.3258418	-104.4134994	0.00	
2523.00†	12.540	225.235	2494.25	-167.40	-200.41	-202.07	3302909.87	1363385.38	40.3257999	-104.4135547	0.00	
2623.00†	12.540	225.235	2591.86	-180.17	-215.70	-217.48	3302894.64	1363369.90	40.3257579	-104.4136100	0.00	
2723.00†	12.540	225.235	2689.47	-192.95	-230.99	-232.90	3302879.42	1363354.42	40.3257159	-104.4136653	0.00	
2823.00†	12.540	225.235	2787.09	-205.72	-246.28	-248.31	3302864.19	1363338.95	40.3256740	-104.4137206	0.00	
2923.00†	12.540	225.235	2884.70	-218.49	-261.57	-263.73	3302848.96	1363323.47	40.3256320	-104.4137759	0.00	
3023.00†	12.540	225.235	2982.32	-231.26	-276.86	-279.15	3302833.74	1363307.99	40.3255900	-104.4138311	0.00	
3123.00†	12.540	225.235	3079.93	-244.03	-292.15	-294.56	3302818.51	1363292.52	40.3255481	-104.4138864	0.00	
3223.00†	12.540	225.235	3177.55	-256.80	-307.44	-309.98	3302803.28	1363277.04	40.3255061	-104.4139417	0.00	
3323.00†	12.540	225.235	3275.16	-269.58	-322.73	-325.39	3302788.05	1363261.56	40.3254641	-104.4139970	0.00	
3423.00†	12.540	225.235	3372.77	-282.35	-338.02	-340.81	3302772.83	1363246.08	40.3254221	-104.4140523	0.00	
3523.00†	12.540	225.235	3470.39	-295.12	-353.31	-356.23	3302757.60	1363230.61	40.3253802	-104.4141076	0.00	
3623.00†	12.540	225.235	3568.00	-307.89	-368.60	-371.64	3302742.37	1363215.13	40.3253382	-104.4141629	0.00	
3723.00†	12.540	225.235	3665.62	-320.66	-383.89	-387.06	3302727.15	1363199.65	40.3252962	-104.4142182	0.00	
3823.00†	12.540	225.235	3763.23	-333.43	-399.18	-402.48	3302711.92	1363184.17	40.3252543	-104.4142734	0.00	
3923.00†	12.540	225.235	3860.85	-346.21	-414.47	-417.89	3302696.69	1363168.70	40.3252123	-104.4143287	0.00	
4023.00†	12.540	225.235	3958.46	-358.98	-429.76	-433.31	3302681.47	1363153.22	40.3251703	-104.4143840	0.00	
4123.00†	12.540	225.235	4056.07	-371.75	-445.05	-448.72	3302666.24	1363137.74	40.3251283	-104.4144393	0.00	
4223.00†	12.540	225.235	4153.69	-384.52	-460.35	-464.14	3302651.01	1363122.27	40.3250864	-104.4144946	0.00	
4323.00†	12.540	225.235	4251.30	-397.29	-475.64	-479.56	3302635.79	1363106.79	40.3250444	-104.4145499	0.00	
4423.00†	12.540	225.235	4348.92	-410.06	-490.93	-494.97	3302620.56	1363091.31	40.3250024	-104.4146052	0.00	
4523.00†	12.540	225.235	4446.53	-422.84	-506.22	-510.39	3302605.33	1363075.83	40.3249605	-104.4146605	0.00	
4623.00†	12.540	225.235	4544.15	-435.61	-521.51	-525.80	3302590.11	1363060.36	40.3249185	-104.4147157	0.00	
4723.00†	12.540	225.235	4641.76	-448.38	-536.80	-541.22	3302574.88	1363044.88	40.3248765	-104.4147710	0.00	
4823.00†	12.540	225.235	4739.37	-461.15	-552.09	-556.64	3302559.65	1363029.40	40.3248345	-104.4148263	0.00	
4923.00†	12.540	225.235	4836.99	-473.92	-567.38	-572.05	3302544.42	1363013.92	40.3247926	-104.4148816	0.00	
5023.00†	12.540	225.235	4934.60	-486.69	-582.67	-587.47	3302529.20	1362998.45	40.3247506	-104.4149369	0.00	
5123.00†	12.540	225.235	5032.22	-499.47	-597.96	-602.89	3302513.97	1362982.97	40.3247086	-104.4149922	0.00	
5223.00†	12.540	225.235	5129.83	-512.24	-613.25	-618.30	3302498.74	1362967.49	40.3246667	-104.4150475	0.00	
5323.00†	12.540	225.235	5227.45	-525.01	-628.54	-633.72	3302483.52	1362952.02	40.3246247	-104.4151028	0.00	

Planned Wellpath Report

BIGFOOT 11-9-2 PWP Rev-B.0

Page 4 of 8

REFERENCE WELLPATH IDENTIFICATION

Operator	CONFLUENCE RESOURCES	Well	BIGFOOT 11-9-2
Field	WELD COUNTY (NAD83, TRUE NORTH)	API/Legal	
Facility	SEC.11-T04N-R63W	Wellbore	BIGFOOT 11-9-2 PWB
Slot	SLOT#03 BIGFOOT 11-9-2 (2405'FSL & 620'FWL,SEC.11)		

WELLPATH DATA (121 stations) † = interpolated, ‡ = extrapolated station

MD [ft]	Inclination [°]	Azimuth [°]	TVD [ft]	Vert Sect [ft]	North [ft]	East [ft]	Grid East [US ft]	Grid North [US ft]	Latitude	Longitude	DLS [°/100ft]	Comments
5423.00†	12.540	225.235	5325.06	-537.78	-643.83	-649.13	3302468.29	1362936.54	40.3245827	-104.4151580	0.00	
5523.00†	12.540	225.235	5422.67	-550.55	-659.12	-664.55	3302453.06	1362921.06	40.3245407	-104.4152133	0.00	
5623.00†	12.540	225.235	5520.29	-563.32	-674.41	-679.97	3302437.84	1362905.58	40.3244988	-104.4152686	0.00	
5723.00†	12.540	225.235	5617.90	-576.10	-689.70	-695.38	3302422.61	1362890.11	40.3244568	-104.4153239	0.00	
5782.00	12.540	225.235	5675.49	-583.63	-698.72	-704.48	3302413.63	1362880.98	40.3244320	-104.4153565	0.00	KOP
5823.00†	10.012	208.566	5715.71	-587.43	-704.98	-709.34	3302408.84	1362874.65	40.3244148	-104.4153740	10.00	
5923.00†	10.054	148.532	5814.43	-584.62	-720.10	-708.94	3302409.42	1362859.54	40.3243733	-104.4153725	10.00	
6023.00†	17.332	118.162	5911.64	-564.79	-734.62	-691.21	3302427.33	1362845.24	40.3243335	-104.4153089	10.00	
6123.00†	26.422	106.721	6004.38	-528.55	-748.08	-656.68	3302462.02	1362832.20	40.3242965	-104.4151851	10.00	
6223.00†	35.974	100.948	6089.84	-477.01	-760.09	-606.41	3302512.43	1362820.81	40.3242636	-104.4150048	10.00	
6323.00†	45.699	97.362	6165.42	-411.72	-770.28	-541.92	3302577.04	1362811.41	40.3242356	-104.4147735	10.00	
6423.00†	55.504	94.806	6228.82	-334.67	-778.34	-465.17	3302653.88	1362804.30	40.3242135	-104.4144983	10.00	
6523.00†	65.350	92.795	6278.12	-248.20	-784.02	-378.50	3302740.61	1362799.68	40.3241979	-104.4141874	10.00	
6623.00†	75.219	91.080	6311.81	-154.95	-787.16	-284.53	3302834.60	1362797.70	40.3241893	-104.4138504	10.00	
6723.00†	85.100	89.516	6328.88	-57.73	-787.65	-186.13	3302933.00	1362798.41	40.3241880	-104.4134975	10.00	
6772.57	90.000	88.764	6331.00†	-8.99	-786.90	-136.63	3302982.49	1362799.76	40.3241900	-104.4133200	10.00	LANDING
6823.00†	90.000	88.764	6331.00	40.61	-785.82	-86.21	3303032.89	1362801.47	40.3241930	-104.4131392	0.00	
6923.00†	90.000	88.764	6331.00	138.95	-783.66	13.77	3303132.83	1362804.85	40.3241989	-104.4127806	0.00	
7023.00†	90.000	88.764	6331.00	237.30	-781.50	113.74	3303232.76	1362808.23	40.3242048	-104.4124221	0.00	
7123.00†	90.000	88.764	6331.00	335.64	-779.34	213.72	3303332.70	1362811.62	40.3242108	-104.4120635	0.00	
7223.00†	90.000	88.764	6331.00	433.98	-777.18	313.70	3303432.64	1362815.00	40.3242167	-104.4117050	0.00	
7323.00†	90.000	88.764	6331.00	532.33	-775.03	413.67	3303532.58	1362818.38	40.3242226	-104.4113464	0.00	
7423.00†	90.000	88.764	6331.00	630.67	-772.87	513.65	3303632.52	1362821.77	40.3242285	-104.4109879	0.00	
7523.00†	90.000	88.764	6331.00	729.02	-770.71	613.63	3303732.46	1362825.15	40.3242344	-104.4106293	0.00	
7623.00†	90.000	88.764	6331.00	827.36	-768.55	713.60	3303832.39	1362828.53	40.3242403	-104.4102708	0.00	
7723.00†	90.000	88.764	6331.00	925.70	-766.39	813.58	3303932.33	1362831.92	40.3242463	-104.4099122	0.00	
7823.00†	90.000	88.764	6331.00	1024.05	-764.24	913.56	3304032.27	1362835.30	40.3242522	-104.4095537	0.00	
7923.00†	90.000	88.764	6331.00	1122.39	-762.08	1013.53	3304132.21	1362838.68	40.3242581	-104.4091951	0.00	
8023.00†	90.000	88.764	6331.00	1220.74	-759.92	1113.51	3304232.15	1362842.07	40.3242640	-104.4088365	0.00	
8123.00†	90.000	88.764	6331.00	1319.08	-757.76	1213.49	3304332.09	1362845.45	40.3242699	-104.4084780	0.00	

Planned Wellpath Report

BIGFOOT 11-9-2 PWP Rev-B.0

Page 5 of 8

REFERENCE WELLPATH IDENTIFICATION

Operator	CONFLUENCE RESOURCES	Well	BIGFOOT 11-9-2
Field	WELD COUNTY (NAD83, TRUE NORTH)	API/Legal	
Facility	SEC.11-T04N-R63W	Wellbore	BIGFOOT 11-9-2 PWB
Slot	SLOT#03 BIGFOOT 11-9-2 (2405'FSL & 620'FWL,SEC.11)		

WELLPATH DATA (121 stations) † = interpolated, ‡ = extrapolated station

MD [ft]	Inclination [°]	Azimuth [°]	TVD [ft]	Vert Sect [ft]	North [ft]	East [ft]	Grid East [US ft]	Grid North [US ft]	Latitude	Longitude	DLS [°/100ft]	Comments
8223.00†	90.000	88.764	6331.00	1417.42	-755.61	1313.46	3304432.02	1362848.83	40.3242758	-104.4081194	0.00	
8323.00†	90.000	88.764	6331.00	1515.77	-753.45	1413.44	3304531.96	1362852.22	40.3242817	-104.4077609	0.00	
8423.00†	90.000	88.764	6331.00	1614.11	-751.29	1513.42	3304631.90	1362855.60	40.3242876	-104.4074023	0.00	
8523.00†	90.000	88.764	6331.00	1712.46	-749.13	1613.39	3304731.84	1362858.98	40.3242935	-104.4070438	0.00	
8623.00†	90.000	88.764	6331.00	1810.80	-746.97	1713.37	3304831.78	1362862.37	40.3242994	-104.4066852	0.00	
8723.00†	90.000	88.764	6331.00	1909.14	-744.82	1813.35	3304931.72	1362865.75	40.3243053	-104.4063267	0.00	
8823.00†	90.000	88.764	6331.00	2007.49	-742.66	1913.32	3305031.65	1362869.13	40.3243112	-104.4059681	0.00	
8923.00†	90.000	88.764	6331.00	2105.83	-740.50	2013.30	3305131.59	1362872.52	40.3243172	-104.4056096	0.00	
9023.00†	90.000	88.764	6331.00	2204.18	-738.34	2113.28	3305231.53	1362875.90	40.3243231	-104.4052510	0.00	
9123.00†	90.000	88.764	6331.00	2302.52	-736.18	2213.25	3305331.47	1362879.28	40.3243289	-104.4048925	0.00	
9223.00†	90.000	88.764	6331.00	2400.86	-734.03	2313.23	3305431.41	1362882.67	40.3243348	-104.4045339	0.00	
9323.00†	90.000	88.764	6331.00	2499.21	-731.87	2413.21	3305531.35	1362886.05	40.3243407	-104.4041753	0.00	
9423.00†	90.000	88.764	6331.00	2597.55	-729.71	2513.18	3305631.28	1362889.43	40.3243466	-104.4038168	0.00	
9523.00†	90.000	88.764	6331.00	2695.90	-727.55	2613.16	3305731.22	1362892.82	40.3243525	-104.4034582	0.00	
9623.00†	90.000	88.764	6331.00	2794.24	-725.40	2713.14	3305831.16	1362896.20	40.3243584	-104.4030997	0.00	
9723.00†	90.000	88.764	6331.00	2892.58	-723.24	2813.11	3305931.10	1362899.58	40.3243643	-104.4027411	0.00	
9823.00†	90.000	88.764	6331.00	2990.93	-721.08	2913.09	3306031.04	1362902.96	40.3243702	-104.4023826	0.00	
9923.00†	90.000	88.764	6331.00	3089.27	-718.92	3013.07	3306130.98	1362906.35	40.3243761	-104.4020240	0.00	
10023.00†	90.000	88.764	6331.00	3187.62	-716.76	3113.04	3306230.91	1362909.73	40.3243820	-104.4016655	0.00	
10123.00†	90.000	88.764	6331.00	3285.96	-714.61	3213.02	3306330.85	1362913.11	40.3243879	-104.4013069	0.00	
10223.00†	90.000	88.764	6331.00	3384.30	-712.45	3313.00	3306430.79	1362916.50	40.3243938	-104.4009484	0.00	
10323.00†	90.000	88.764	6331.00	3482.65	-710.29	3412.97	3306530.73	1362919.88	40.3243997	-104.4005898	0.00	
10423.00†	90.000	88.764	6331.00	3580.99	-708.13	3512.95	3306630.67	1362923.26	40.3244055	-104.4002312	0.00	
10523.00†	90.000	88.764	6331.00	3679.33	-705.97	3612.93	3306730.61	1362926.65	40.3244114	-104.3998727	0.00	
10623.00†	90.000	88.764	6331.00	3777.68	-703.82	3712.90	3306830.54	1362930.03	40.3244173	-104.3995141	0.00	
10723.00†	90.000	88.764	6331.00	3876.02	-701.66	3812.88	3306930.48	1362933.41	40.3244232	-104.3991556	0.00	
10823.00†	90.000	88.764	6331.00	3974.37	-699.50	3912.86	3307030.42	1362936.80	40.3244291	-104.3987970	0.00	
10923.00†	90.000	88.764	6331.00	4072.71	-697.34	4012.83	3307130.36	1362940.18	40.3244349	-104.3984385	0.00	
11023.00†	90.000	88.764	6331.00	4171.05	-695.19	4112.81	3307230.30	1362943.56	40.3244408	-104.3980799	0.00	
11123.00†	90.000	88.764	6331.00	4269.40	-693.03	4212.79	3307330.23	1362946.95	40.3244467	-104.3977214	0.00	



Planned Wellpath Report

BIGFOOT 11-9-2 PWP Rev-B.0

Page 6 of 8



REFERENCE WELLPATH IDENTIFICATION

Operator	CONFLUENCE RESOURCES	Well	BIGFOOT 11-9-2
Field	WELD COUNTY (NAD83, TRUE NORTH)	API/Legal	
Facility	SEC.11-T04N-R63W	Wellbore	BIGFOOT 11-9-2 PWB
Slot	SLOT#03 BIGFOOT 11-9-2 (2405'FSL & 620'FWL,SEC.11)		

WELLPATH DATA (121 stations)

MD [ft]	Inclination [°]	Azimuth [°]	TVD [ft]	Vert Sect [ft]	North [ft]	East [ft]	Grid East [US ft]	Grid North [US ft]	Latitude	Longitude	DLS [°/100ft]	Comments
11179.16	90.000	88.764	6331.00 ²	4324.63	-691.82	4268.93	3307386.36	1362948.85	40.3244500	-104.3975200	0.00	TD

HOLE & CASING SECTIONS

- Ref Wellbore: BIGFOOT 11-9-2 PWB Ref Wellpath: BIGFOOT 11-9-2 PWP Rev-B.0

String/Diameter	Start MD [ft]	End MD [ft]	Interval [ft]	Start TVD [ft]	End TVD [ft]	Start N/S [ft]	Start E/W [ft]	End N/S [ft]	End E/W [ft]
9.625in Casing Surface	23.00	1709.34	1686.34	23.00	1700.00	0.00	0.00	-76.01	-76.63

TARGETS

Name	MD [ft]	TVD [ft]	North [ft]	East [ft]	Grid East [US ft]	Grid North [US ft]	Latitude	Longitude	Shape
SEC.11-T04N-R63W	N/A	-2.50	47.36	0.00	3303108.87	1363635.60	40.3264800	-104.4128300	polygon
	2D Polygon: dimensions not calculated								
SEC.11-T04N-R63W 470' SETBACK	N/A	-2.50	47.36	0.00	3303108.87	1363635.60	40.3264800	-104.4128300	polygon
	2D Polygon: dimensions not calculated								
2) BIGFOOT 11-9-2 BHL REV-1 (1623'FSL & 470'FEL,SEC.11)	11179.16	6331.00	-691.82	4268.93	3307386.36	1362948.85	40.3244500	-104.3975200	point
1) BIGFOOT 11-9-2 LP REV-1 (1623'FSL & 470'FWL,SEC.11)	6772.57	6331.00	-786.90	-136.63	3302982.49	1362799.76	40.3241900	-104.4133200	point



Planned Wellpath Report

BIGFOOT 11-9-2 PWP Rev-B.0

Page 7 of 8



REFERENCE WELLPATH IDENTIFICATION

Operator	CONFLUENCE RESOURCES	Well	BIGFOOT 11-9-2
Field	WELD COUNTY (NAD83, TRUE NORTH)	API/Legal	
Facility	SEC.11-T04N-R63W	Wellbore	BIGFOOT 11-9-2 PWB
Slot	SLOT#03 BIGFOOT 11-9-2 (2405'FSL & 620'FWL,SEC.11)		

SURVEY PROGRAM - Ref Wellbore: BIGFOOT 11-9-2 PWB Ref Wellpath: BIGFOOT 11-9-2 PWP Rev-B.0

Start MD [ft]	End MD [ft]	Positional Uncertainty Model	Log Name/Comment	Wellbore
23.00	1709.34	BH NaviTrak (2019) (Axial)		BIGFOOT 11-9-2 PWB
1709.34	11179.16	BH AutoTrak Curve/eXpress (2019) (Short spacing)		BIGFOOT 11-9-2 PWB



Planned Wellpath Report

BIGFOOT 11-9-2 PWP Rev-B.0

Page 8 of 8



REFERENCE WELLPATH IDENTIFICATION

Operator	CONFLUENCE RESOURCES	Well	BIGFOOT 11-9-2
Field	WELD COUNTY (NAD83, TRUE NORTH)	API/Legal	
Facility	SEC.11-T04N-R63W	Wellbore	BIGFOOT 11-9-2 PWB
Slot	SLOT#03 BIGFOOT 11-9-2 (2405'FSL & 620'FWL,SEC.11)		

DESIGN COMMENTS

MD [ft]	Inclination [°]	Azimuth [°]	TVD [ft]	Comment
23.00	0.000	225.235	23.00	Tie On
900.00	0.000	225.235	900.00	End of Tangent
1527.00	12.540	225.235	1522.01	End of Build (J)
1709.34	12.540	225.235	1700.00	End of Tangent (J)
1809.34	12.540	225.235	1797.61	End of Tangent
1809.36	12.540	225.235	1797.63	Build (XS)
5782.00	12.540	225.235	5675.49	KOP
6772.57	90.000	88.764	6331.00	LANDING
11179.16	90.000	88.764	6331.00	TD



Closest Approach Clearance Summary Report

BIGFOOT 11-9-2 PWP Rev-B.0 - SPE WPTS Stop
Drilling HSE Risk (2017)
Page 1 of 3



REFERENCE WELLPATH IDENTIFICATION			
Operator	CONFLUENCE RESOURCES	Well	BIGFOOT 11-9-2
Field	WELD COUNTY (NAD83, TRUE NORTH)	API/Legal	
Facility	SEC.11-T04N-R63W	Wellbore	BIGFOOT 11-9-2 PWB
Slot	SLOT#03 BIGFOOT 11-9-2 (2405'FSL & 620'FWL,SEC.11)		

REPORT SETUP INFORMATION			
Projection System	NAD83 / Lambert Colorado SP, Northern Zone (501), US feet	Software System	WellArchitect® 6.0
North Reference	True	User	Painsetr
Scale	0.999958	Report Generated	4/26/2022 at 1:34:46 PM
Convergence at slot	0.70° East	Database	WellArchitectDB

WELLPATH LOCATION						
	Local coordinates		Grid coordinates		Geographic coordinates	
	North[ft]	East[ft]	Easting[US ft]	Northing[US ft]	Latitude	Longitude
Slot Location	-47.36	0.00	3303109.45	1363588.25	40.3263500°	-104.4128300°
Facility Reference Pt			3303108.87	1363635.60	40.3264800°	-104.4128300°
Field Reference Pt			3230456.90	1245096.09	40.0032400°	-104.6773400°

WELLPATH DATUM			
Calculation method	Minimum Curvature	Rig (23') (KB) to Facility Vertical Datum	4639.00ft
Horizontal Reference Pt	Slot	Rig (23') (KB) to Mean Sea Level	4639.00ft
Vertical Reference Pt	Rig (23') (KB)	Rig (23') (KB) to Ground Level at Slot (SLOT#03 BIGFOOT 11-9-2 (2405'FSL & 620'FWL,SEC.11))	23.00ft
MD Reference Pt	Rig (23') (KB)		
Field Vertical Reference	Mean Sea Level		

POSITIONAL UNCERTAINTY CALCULATION SETTINGS					
Ellipse Confidence Limit	3.50 Std Dev	Ellipse Start MD	23.00ft	Surface Position Uncertainty	included
Declination	7.76° East of TN	Dip Angle	66.72°	Mag Field Strength	51850 nT
Slot Surface Uncertainty @1SD		Horizontal	0.100ft	Vertical	1.000ft
Facility Surface Uncertainty @1SD		Horizontal	8.200ft	Vertical	3.000ft
Positional Uncertainty values in the WELLPATH DATA table are the projection of the ellipsoid of uncertainty onto the vertical and horizontal planes					



Closest Approach Clearance Summary Report

BIGFOOT 11-9-2 PWP Rev-B.0 - SPE WPTS Stop
Drilling HSE Risk (2017)
Page 2 of 3



REFERENCE WELLPATH IDENTIFICATION

Operator	CONFLUENCE RESOURCES	Well	BIGFOOT 11-9-2
Field	WELD COUNTY (NAD83, TRUE NORTH)	API/Legal	
Facility	SEC.11-T04N-R63W	Wellbore	BIGFOOT 11-9-2 PWB
Slot	SLOT#03 BIGFOOT 11-9-2 (2405'FSL & 620'FWL,SEC.11)		

PROXIMITY-SCAN RULE

Rule Name	SPE WPTS Stop Drilling HSE Risk (2017)	Rule Based On	Ratio
Plane of Rule	Closest Approach	Threshold Value	1.00
Include Casing & Hole Size	yes	Apply Cone of Safety	no

HOLE & CASING SECTIONS

- Ref Wellbore: BIGFOOT 11-9-2 PWB Ref Wellpath: BIGFOOT 11-9-2 PWP Rev-B.0

String/Diameter	Start MD [ft]	End MD [ft]	Interval [ft]	Start TVD [ft]	End TVD [ft]	Start N/S [ft]	Start E/W [ft]	End N/S [ft]	End E/W [ft]
9.625in Casing Surface	23.00	1709.34	1686.34	23.00	1700.00	0.00	0.00	-76.01	-76.63

SURVEY PROGRAM - Ref Wellbore: BIGFOOT 11-9-2 PWB Ref Wellpath: BIGFOOT 11-9-2 PWP Rev-B.0

Start MD [ft]	End MD [ft]	Positional Uncertainty Model	Log Name/Comment	Wellbore
23.00	1709.34	BH NaviTrak (2019) (Axial)		BIGFOOT 11-9-2 PWB
1709.34	11179.16	BH AutoTrak Curve/eXpress (2019) (Short spacing)		BIGFOOT 11-9-2 PWB



Closest Approach Clearance Summary Report

**BIGFOOT 11-9-2 PWP Rev-B.0 - SPE WPTS Stop
Drilling HSE Risk (2017)**
Page 3 of 3



REFERENCE WELLPATH IDENTIFICATION			
Operator	CONFLUENCE RESOURCES	Well	BIGFOOT 11-9-2
Field	WELD COUNTY (NAD83, TRUE NORTH)	API/Legal	
Facility	SEC.11-T04N-R63W	Wellbore	BIGFOOT 11-9-2 PWB
Slot	SLOT#03 BIGFOOT 11-9-2 (2405'FSL & 620'FWL,SEC.11)		

CALCULATION RANGE & CUTOFF		
From: 23.00ft MD	To: 11179.16ft MD	C-C Cutoff: (none)

OFFSET WELL CLEARANCE SUMMARY (17 Offset Wellpaths selected) Ratios are calculated in Closest Approach plane												
Offset Facility	Offset Slot	Offset Well	Offset Wellbore	Offset Wellpath	Wellbore Status	C-C Clearance Distance			Rule Separation Ratio			
						Ref MD [ft]	Min C-C Clear Dist [ft]	Diverging from MD [ft]	Ref MD of Min Ratio [ft]	Min Ratio	Min Ratio Dvrg from [ft]	Rule Status
SEC.11-T04N-R63W	SLOT#04 BIGFOOT 11-10-3 (2380'FSL & 620'FWL,SEC.11)	BIGFOOT 11-10-3	BIGFOOT 11-10-3 PWB	BIGFOOT 11-10-3 PWP Rev-B.0	Planned	23.00	25.50	11123.00	11179.16	0.85	11179.16	FAIL
SEC.11-T04N-R63W	SLOT#02 BIGFOOT 11-4-4 (2430'FSL & 620'FWL,SEC.11)	BIGFOOT 11-4-4	BIGFOOT 11-4-4 PWB	BIGFOOT 11-4-4 PWP Rev-B.0	Planned	23.00	21.86	11179.16	11179.16	1.06	11179.16	WARN
SEC.11-T04N-R63W	SLOT#01 BIGFOOT 11-8-1 (2455'FSL & 620'FWL,SEC.11)	BIGFOOT 11-8-1	BIGFOOT 11-8-1 PWB	BIGFOOT 11-8-1 PWP Rev-B.0	Planned	23.00	47.36	11179.16	11179.16	1.07	11179.16	WARN
SEC.11-T04N-R63W	SLOT#05 BIGFOOT 11-11-1 (2355'FSL & 620'FWL,SEC.11)	BIGFOOT 11-11-1	BIGFOOT 11-11-1 PWB	BIGFOOT 11-11-1 PWP Rev-B.0	Planned	23.00	51.00	11123.00	11179.16	1.57	11179.16	PASS
SEC.11-T04N-R63W	SLOT#20 BIGFOOT 11-7-3 (2281'FSL & 470'FWL,SEC.11)	BIGFOOT 11-7-3	BIGFOOT 11-7-3 PWB	BIGFOOT 11-7-3 PWP Rev-B.0	Planned	2139.96	123.36	11179.16	11179.16	1.81	11179.16	PASS
SEC.11-T04N-R63W	SLOT#06 BIGFOOT 11-5-4 (2330'FSL & 620'FWL,SEC.11)	BIGFOOT 11-5-4	BIGFOOT 11-5-4 PWB	BIGFOOT 11-5-4 PWP Rev-B.0	Planned	23.00	76.50	11123.00	11179.16	2.15	11179.16	PASS
SEC.11-T04N-R63W	SLOT#07 BIGFOOT 11-12-2 (2305'FSL & 620'FWL,SEC.11)	BIGFOOT 11-12-2	BIGFOOT 11-12-2 PWB	BIGFOOT 11-12-2 PWP Rev-B.0	Planned	23.00	102.04	11123.00	11179.16	2.60	11179.16	PASS
SEC.11-T04N-R63W	SLOT#19 BIGFOOT 11-6-2 (2306'FSL & 470'FWL,SEC.11)	BIGFOOT 11-6-2	BIGFOOT 11-6-2 PWB	BIGFOOT 11-6-2 PWP Rev-B.0	Planned	1801.40	138.26	1801.40	11179.16	2.61	11179.16	PASS
SEC.11-T04N-R63W	SLOT#18 BIGFOOT 11-3-4 (2331'FSL & 470'FWL,SEC.11)	BIGFOOT 11-3-4	BIGFOOT 11-3-4 PWB	BIGFOOT 11-3-4 PWP Rev-B.0	Planned	1596.97	145.87	1596.97	11179.16	3.30	11179.16	PASS
SEC.11-T04N-R63W	SLOT#08 BIGFOOT 11-13-3 (2280'FSL & 620'FWL,SEC.11)	BIGFOOT 11-13-3	BIGFOOT 11-13-3 PWB	BIGFOOT 11-13-3 PWP Rev-B.0	Planned	23.00	127.54	523.00	11179.16	3.43	11179.16	PASS
SEC.11-T04N-R63W	SLOT#17 BIGFOOT 11-5-1 (2356'FSL & 470'FWL,SEC.11)	BIGFOOT 11-5-1	BIGFOOT 11-5-1 PWB	BIGFOOT 11-5-1 PWP Rev-B.0	Planned	1388.75	151.64	1388.75	11179.16	3.70	11179.16	PASS
SEC.11-T04N-R63W	SLOT#16 BIGFOOT 11-4-3 (2381'FSL & 470'FWL,SEC.11)	BIGFOOT 11-4-3	BIGFOOT 11-4-3 PWB	BIGFOOT 11-4-3 PWP Rev-B.0	Planned	23.00	153.36	1123.00	11179.16	4.42	11179.16	PASS
SEC.11-T04N-R63W	SLOT#15 BIGFOOT 11-3-2 (2406'FSL & 470'FWL,SEC.11)	BIGFOOT 11-3-2	BIGFOOT 11-3-2 PWB	BIGFOOT 11-3-2 PWP Rev-B.0	Planned	23.00	150.61	723.00	11179.16	5.22	11179.16	PASS
SEC.11-T04N-R63W	SLOT#14 BIGFOOT 11-2-4 (2431'FSL & 470'FWL,SEC.11)	BIGFOOT 11-2-4	BIGFOOT 11-2-4 PWB	BIGFOOT 11-2-4 PWP Rev-B.0	Planned	23.00	152.14	623.00	11179.16	5.86	11179.16	PASS
SEC.10-T04N-R63W	SLOT#02 70 RANCH 10-11-2 (2360'FNL & 514'FEL, SEC.10)	70 RANCH 10-11-2	70 RANCH 10-11-2 AWB	70 RANCH 10-11-2 AWP	Drilling	2174.56	1138.18	11179.16	11179.16	7.03	11179.16	PASS

OFFSET WELL CLEARANCE SUMMARY (17 Offset Wellpaths selected) Ratios are calculated in Closest Approach plane												
Offset Facility	Offset Slot	Offset Well	Offset Wellbore	Offset Wellpath	Wellbore Status	C-C Clearance Distance			Rule Separation Ratio			
						Ref MD [ft]	Min C-C Clear Dist [ft]	Diverging from MD [ft]	Ref MD of Min Ratio [ft]	Min Ratio	Min Ratio Dvrg from [ft]	Rule Status
SEC.10-T04N-R63W	SLOT#01 70 RANCH 10-11-1 (2345'FNL & 514'FEL, SEC.10)	70 RANCH 10-11-1	70 RANCH 10-11-1 AWB	70 RANCH 10-11-1 AWP	Drilling	23.00	1225.26	11179.16	11179.16	8.32	11179.16	PASS
SEC.11-T04N-R63W	SLOT#13 BIGFOOT 11-1-4 (2456'FSL & 470'FWL,SEC.11)	BIGFOOT 11-1-4	BIGFOOT 11-1-4 PWB	BIGFOOT 11-1-4 PWP Rev-B.0	Planned	23.00	157.84	223.00	11179.16	8.70	11179.16	PASS