

CONFLUENCE RESOURCES



Location:	COLORADO	Slot:	SLOT#02 BIGFOOT 11-4-4 (2430'FSL & 620'FWL,SEC.11)
Field:	WELD COUNTY (NAD83, TRUE NORTH)	Well:	BIGFOOT 11-4-4
Facility:	SEC.11-T04N-R63W	Wellbore:	BIGFOOT 11-4-4 PWB

Plot reference wellpath is BIGFOOT 11-4-4 PWP RevB.0	Grid System: NAD83 / Lambert Colorado SP, Northern Zone (501), US feet
True vertical depths are referenced to Rig (23) (KB)	North Reference: True north
Reference wellpath measured depths are referenced to Rig (23) (KB)	Scale: True distance
Rig (23) (KB) to Mean Sea Level: 4639 feet	Coordinates are in feet referenced to Slot
Mean Sea Level to Ground level (At Slot: SLOT#02 BIGFOOT 11-4-4 (2430'FSL & 620'FWL,SEC.11)): -4616 feet	Depths are in feet
Offset wellpath MDs are referenced to each path's default MD datum	Created by: painseir on 2022-04-26; Database: WellArchitectDB

Location Information

Facility Name	Grid East (US ft)	Grid North (US ft)	Latitude	Longitude
SEC.11-T04N-R63W	3303108.873	1363635.600	40°19'35.3280"N	104°24'46.1880"W
Slot	Local N (ft)	Local E (ft)	Grid North (US ft)	Longitude
SLOT#02 BIGFOOT 11-4-4 (2430'FSL & 620'FWL,SEC.11)	-25.50	-0.00	3303109.186	1363610.102
Rig (23) (KB) to Ground level (At Slot: SLOT#02 BIGFOOT 11-4-4 (2430'FSL & 620'FWL,SEC.11))	23ft			
Mean Sea Level to Ground level (At Slot: SLOT#02 BIGFOOT 11-4-4 (2430'FSL & 620'FWL,SEC.11))	-4616ft			
Rig (23) (KB) to Mean Sea Level	4639ft			

Hole and Casing Sections

Name	Start MD (ft)	End MD (ft)	Interval (ft)	Start TVD (ft)	End TVD (ft)	Start Local N (ft)	Start Local E (ft)	End Local N (ft)	End Local E (ft)	Wellbore
9.625in Casing Surface	23.00	1706.87	1683.87	23.00	1700.00	0.00	0.00	-52.90	-73.48	BIGFOOT 11-4-4 PWB

Survey Program

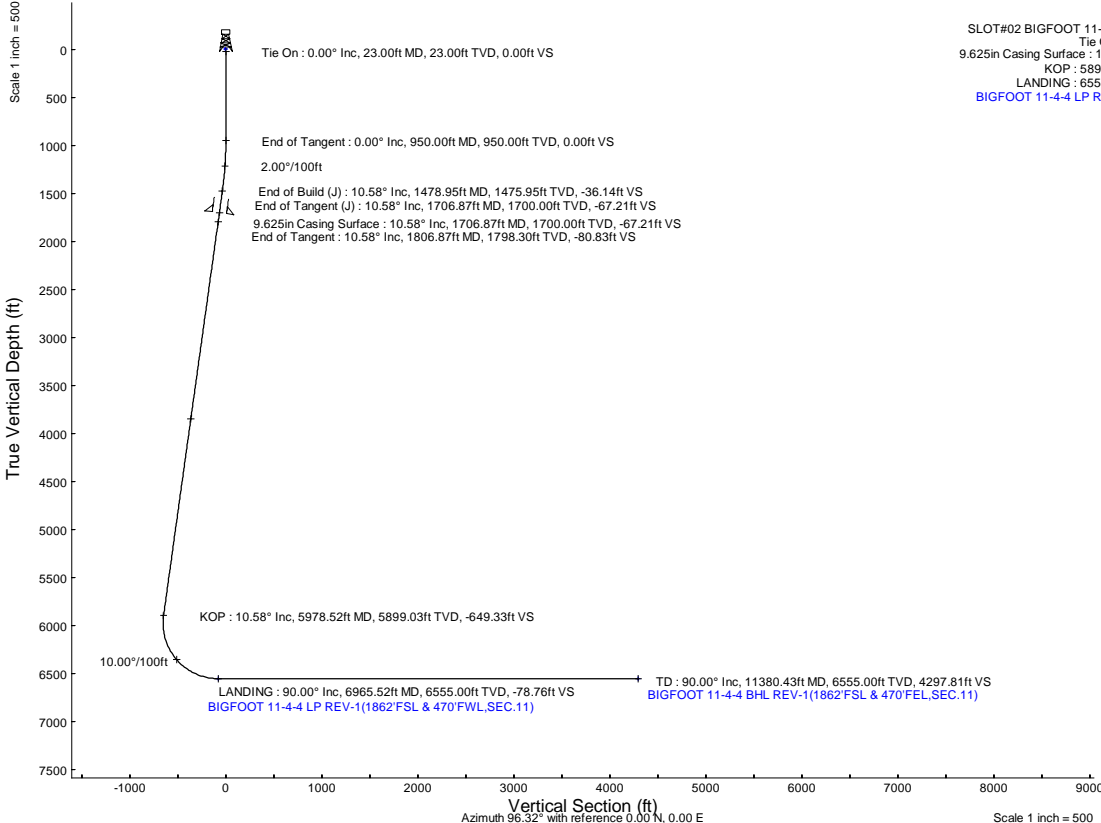
Start MD (ft)	End MD (ft)	Tool	Model	Log Name/Comment	Wellbore
23.00	1706.87	BH NavitTrak (2019)	BH NavitTrak (2019) (Axial)		BIGFOOT 11-4-4 PWB
1706.87	11380.43	BH AutoTrak Curve/xpress (2019)	BH AutoTrak Curve/xpress (2019) (Short spacing)		BIGFOOT 11-4-4 PWB

Bottom Hole Location

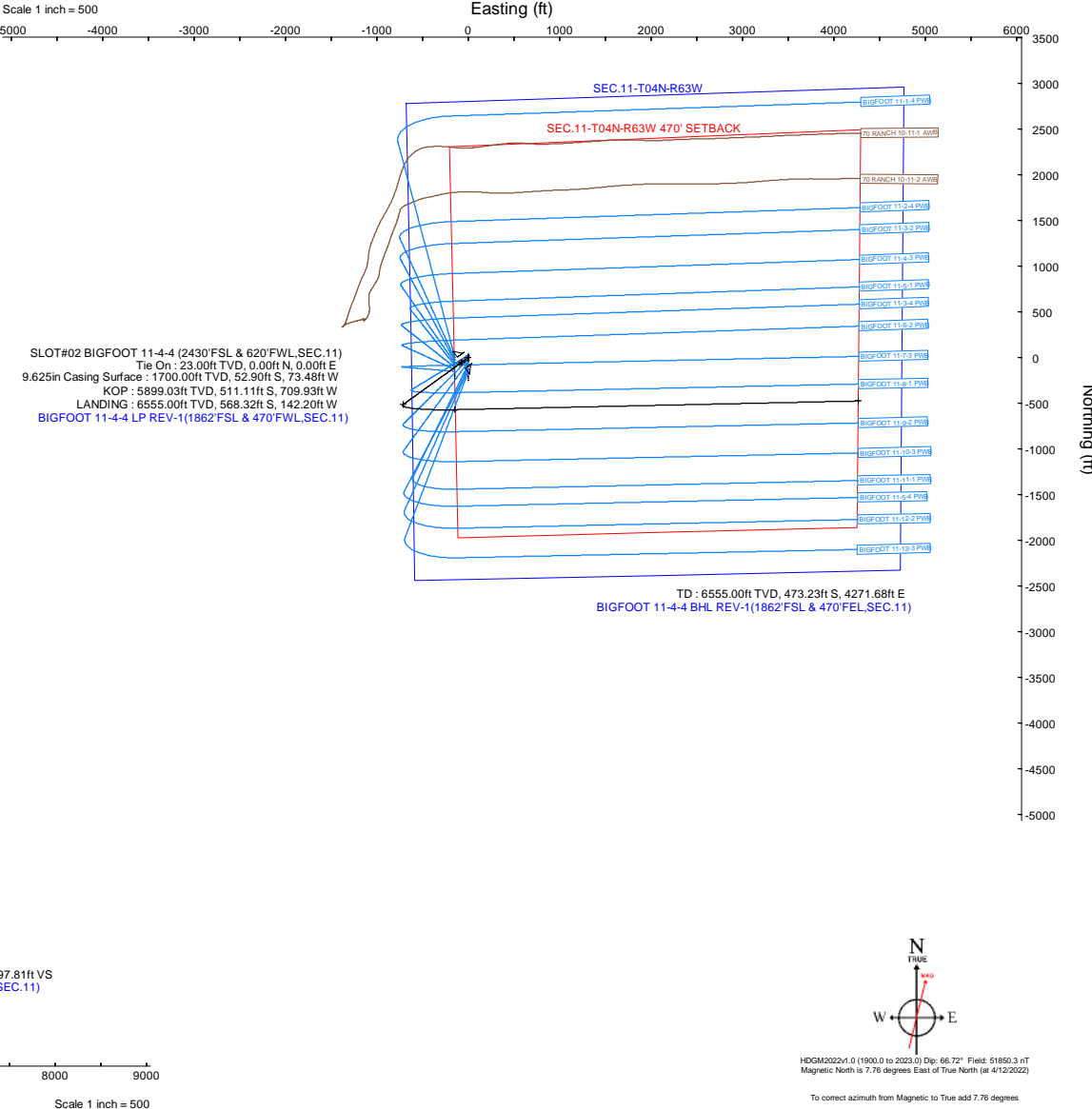
MD (ft)	Inc (°)	Az (°)	TVD (ft)	Local N (ft)	Local E (ft)	Grid East (US ft)	Grid North (US ft)	Latitude	Longitude
11380.43	90.000	88.766	6555.00	-473.23	4271.68	3307386.16	1363189.30	40°19'30.3960"N	104°23'51.0360"W

Targets

Name	MD (ft)	TVD (ft)	Local N (ft)	Local E (ft)	Grid East (US ft)	Grid North (US ft)	Latitude	Longitude
SEC.11-T04N-R63W	N/A	-2.50	25.50	0.00	3303108.87	1363635.60	40°19'35.3280"N	104°24'46.1880"W
SEC.11-T04N-R63W 470' SETBACK	N/A	-2.50	25.50	0.00	3303108.87	1363635.60	40°19'35.3280"N	104°24'46.1880"W
BIGFOOT 11-4-4 BHL REV-1(1862'FSL & 470'FEL,SEC.11)	11380.43	6555.00	-473.23	4271.68	3307386.16	1363189.30	40°19'30.3960"N	104°23'51.0360"W
BIGFOOT 11-4-4 LP REV-1(1862'FSL & 470'FWL,SEC.11)	6965.52	6555.00	-568.32	-142.20	3302973.97	1363040.11	40°19'29.4600"N	104°24'48.0240"W



Well Profile Data								
Design Comment	MD (ft)	Inc (°)	Az (°)	TVD (ft)	Local N (ft)	Local E (ft)	DLS (°/100ft)	VS (ft)
Tie On	23.00	0.000	234.248	23.00	0.00	0.00	0.00	0.00
End of Tangent	950.00	0.000	234.248	950.00	0.00	0.00	0.00	0.00
End of Build (J)	1478.95	10.579	234.248	1475.95	-28.45	-39.52	2.00	-36.14
End of Tangent (J)	1706.87	10.579	234.248	1700.00	-52.90	-73.48	0.00	-67.21
End of Tangent	1806.87	10.579	234.248	1798.30	-63.63	-88.38	0.00	-80.83
KOP	5978.52	10.579	234.248	5899.03	-511.11	-709.93	0.00	-649.33
LANDING	6965.52	90.000	88.766	6555.00	-568.32	-142.20	10.00	-78.76
TD	11380.43	90.000	88.766	6555.00	-473.23	4271.68	0.00	4297.81





Planned Wellpath Report

BIGFOOT 11-4-4 PWP Rev-B.0

Page 1 of 8



REFERENCE WELLPATH IDENTIFICATION

Operator	CONFLUENCE RESOURCES	Well	BIGFOOT 11-4-4
Field	WELD COUNTY (NAD83, TRUE NORTH)	API/Legal	
Facility	SEC.11-T04N-R63W	Wellbore	BIGFOOT 11-4-4 PWB
Slot	SLOT#02 BIGFOOT 11-4-4 (2430'FSL & 620'FWL,SEC.11)		

REPORT SETUP INFORMATION

Projection System	NAD83 / Lambert Colorado SP, Northern Zone (501), US feet	Software System	WellArchitect® 6.0
North Reference	True	User	Painsetr
Scale	0.999958	Report Generated	4/26/2022 at 1:30:21 PM
Convergence at slot	0.70° East	Database	WellArchitectDB

WELLPATH LOCATION

	Local coordinates		Grid coordinates		Geographic coordinates	
	North[ft]	East[ft]	Easting[US ft]	Northing[US ft]	Latitude	Longitude
Slot Location	-25.50	-0.00	3303109.19	1363610.10	40.3264100°	-104.4128300°
Facility Reference Pt			3303108.87	1363635.60	40.3264800°	-104.4128300°
Field Reference Pt			3230456.90	1245096.09	40.0032400°	-104.6773400°

WELLPATH DATUM

Calculation method	Minimum curvature	Rig (23') (KB) to Facility Vertical Datum	4639.00ft
Horizontal Reference Pt	Slot	Rig (23') (KB) to Mean Sea Level	4639.00ft
Vertical Reference Pt	Rig (23') (KB)	Rig (23') (KB) to Ground Level at Slot (SLOT#02 BIGFOOT 11-4-4 (2430'FSL & 620'FWL,SEC.11))	23.00ft
MD Reference Pt	Rig (23') (KB)	Section Origin	N 0.00, E 0.00 ft
Field Vertical Reference	Mean Sea Level	Section Azimuth	96.32°

Planned Wellpath Report

BIGFOOT 11-4-4 PWP Rev-B.0

Page 2 of 8

REFERENCE WELLPATH IDENTIFICATION

Operator	CONFLUENCE RESOURCES	Well	BIGFOOT 11-4-4
Field	WELD COUNTY (NAD83, TRUE NORTH)	API/Legal	
Facility	SEC.11-T04N-R63W	Wellbore	BIGFOOT 11-4-4 PWB
Slot	SLOT#02 BIGFOOT 11-4-4 (2430'FSL & 620'FWL,SEC.11)		

WELLPATH DATA (122 stations) † = interpolated, ‡ = extrapolated station

MD [ft]	Inclination [°]	Azimuth [°]	TVD [ft]	Vert Sect [ft]	North [ft]	East [ft]	Grid East [US ft]	Grid North [US ft]	Latitude	Longitude	DLS [°/100ft]	Comments
0.00†	0.000	234.248	0.00	0.00	0.00	0.00	3303109.19	1363610.10	40.3264100	-104.4128300	0.00	
23.00	0.000	234.248	23.00	0.00	0.00	0.00	3303109.19	1363610.10	40.3264100	-104.4128300	0.00	Tie On
123.00†	0.000	234.248	123.00	0.00	0.00	0.00	3303109.19	1363610.10	40.3264100	-104.4128300	0.00	
223.00†	0.000	234.248	223.00	0.00	0.00	0.00	3303109.19	1363610.10	40.3264100	-104.4128300	0.00	
323.00†	0.000	234.248	323.00	0.00	0.00	0.00	3303109.19	1363610.10	40.3264100	-104.4128300	0.00	
423.00†	0.000	234.248	423.00	0.00	0.00	0.00	3303109.19	1363610.10	40.3264100	-104.4128300	0.00	
523.00†	0.000	234.248	523.00	0.00	0.00	0.00	3303109.19	1363610.10	40.3264100	-104.4128300	0.00	
623.00†	0.000	234.248	623.00	0.00	0.00	0.00	3303109.19	1363610.10	40.3264100	-104.4128300	0.00	
723.00†	0.000	234.248	723.00	0.00	0.00	0.00	3303109.19	1363610.10	40.3264100	-104.4128300	0.00	
823.00†	0.000	234.248	823.00	0.00	0.00	0.00	3303109.19	1363610.10	40.3264100	-104.4128300	0.00	
923.00†	0.000	234.248	923.00	0.00	0.00	0.00	3303109.19	1363610.10	40.3264100	-104.4128300	0.00	
950.00	0.000	234.248	950.00	0.00	0.00	0.00	3303109.19	1363610.10	40.3264100	-104.4128300	0.00	End of Tangent
1023.00†	1.460	234.248	1022.99	-0.69	-0.54	-0.75	3303108.44	1363609.55	40.3264085	-104.4128327	2.00	
1123.00†	3.460	234.248	1122.89	-3.88	-3.05	-4.24	3303104.99	1363607.00	40.3264016	-104.4128452	2.00	
1223.00†	5.460	234.248	1222.59	-9.65	-7.59	-10.55	3303098.73	1363602.38	40.3263892	-104.4128678	2.00	
1323.00†	7.460	234.248	1321.95	-18.00	-14.17	-19.68	3303089.68	1363595.69	40.3263711	-104.4129006	2.00	
1423.00†	9.460	234.248	1420.85	-28.92	-22.76	-31.62	3303077.85	1363586.95	40.3263475	-104.4129434	2.00	
1478.95	10.579	234.248	1475.95	-36.14	-28.45	-39.52	3303070.02	1363581.17	40.3263319	-104.4129717	2.00	End of Build (J)
1523.00†	10.579	234.248	1519.25	-42.15	-33.18	-46.08	3303063.52	1363576.36	40.3263189	-104.4129953	0.00	
1623.00†	10.579	234.248	1617.55	-55.78	-43.90	-60.98	3303048.75	1363565.46	40.3262895	-104.4130487	0.00	
1706.87	10.579	234.248	1700.00	-67.21	-52.90	-73.48	3303036.37	1363556.31	40.3262648	-104.4130935	0.00	End of Tangent (J)
1723.00†	10.579	234.248	1715.85	-69.40	-54.63	-75.88	3303033.99	1363554.55	40.3262600	-104.4131021	0.00	
1806.87	10.579	234.248	1798.30	-80.83	-63.63	-88.38	3303021.60	1363545.40	40.3262353	-104.4131470	0.00	End of Tangent
1823.00†	10.579	234.248	1814.15	-83.03	-65.36	-90.78	3303019.22	1363543.64	40.3262306	-104.4131556	0.00	
1923.00†	10.579	234.248	1912.45	-96.66	-76.08	-105.68	3303004.45	1363532.73	40.3262012	-104.4132090	0.00	
2023.00†	10.579	234.248	2010.75	-110.29	-86.81	-120.58	3302989.69	1363521.82	40.3261717	-104.4132624	0.00	
2123.00†	10.579	234.248	2109.05	-123.91	-97.54	-135.48	3302974.92	1363510.92	40.3261423	-104.4133159	0.00	
2223.00†	10.579	234.248	2207.35	-137.54	-108.26	-150.38	3302960.15	1363500.01	40.3261128	-104.4133693	0.00	
2323.00†	10.579	234.248	2305.65	-151.17	-118.99	-165.28	3302945.39	1363489.10	40.3260834	-104.4134228	0.00	
2423.00†	10.579	234.248	2403.95	-164.80	-129.72	-180.18	3302930.62	1363478.19	40.3260539	-104.4134762	0.00	

Planned Wellpath Report

BIGFOOT 11-4-4 PWP Rev-B.0

Page 3 of 8

REFERENCE WELLPATH IDENTIFICATION

Operator	CONFLUENCE RESOURCES	Well	BIGFOOT 11-4-4
Field	WELD COUNTY (NAD83, TRUE NORTH)	API/Legal	
Facility	SEC.11-T04N-R63W	Wellbore	BIGFOOT 11-4-4 PWB
Slot	SLOT#02 BIGFOOT 11-4-4 (2430'FSL & 620'FWL,SEC.11)		

WELLPATH DATA (122 stations) † = interpolated, ‡ = extrapolated station

MD [ft]	Inclination [°]	Azimuth [°]	TVD [ft]	Vert Sect [ft]	North [ft]	East [ft]	Grid East [US ft]	Grid North [US ft]	Latitude	Longitude	DLS [°/100ft]	Comments
2523.00†	10.579	234.248	2502.25	-178.42	-140.44	-195.07	3302915.86	1363467.28	40.3260245	-104.4135296	0.00	
2623.00†	10.579	234.248	2600.55	-192.05	-151.17	-209.97	3302901.09	1363456.37	40.3259950	-104.4135831	0.00	
2723.00†	10.579	234.248	2698.85	-205.68	-161.90	-224.87	3302886.32	1363445.47	40.3259656	-104.4136365	0.00	
2823.00†	10.579	234.248	2797.15	-219.31	-172.62	-239.77	3302871.56	1363434.56	40.3259362	-104.4136899	0.00	
2923.00†	10.579	234.248	2895.45	-232.94	-183.35	-254.67	3302856.79	1363423.65	40.3259067	-104.4137434	0.00	
3023.00†	10.579	234.248	2993.75	-246.56	-194.08	-269.57	3302842.03	1363412.74	40.3258773	-104.4137968	0.00	
3123.00†	10.579	234.248	3092.06	-260.19	-204.80	-284.47	3302827.26	1363401.83	40.3258478	-104.4138502	0.00	
3223.00†	10.579	234.248	3190.36	-273.82	-215.53	-299.37	3302812.49	1363390.93	40.3258184	-104.4139037	0.00	
3323.00†	10.579	234.248	3288.66	-287.45	-226.26	-314.27	3302797.73	1363380.02	40.3257889	-104.4139571	0.00	
3423.00†	10.579	234.248	3386.96	-301.07	-236.99	-329.17	3302782.96	1363369.11	40.3257595	-104.4140105	0.00	
3523.00†	10.579	234.248	3485.26	-314.70	-247.71	-344.07	3302768.19	1363358.20	40.3257300	-104.4140640	0.00	
3623.00†	10.579	234.248	3583.56	-328.33	-258.44	-358.97	3302753.43	1363347.29	40.3257006	-104.4141174	0.00	
3723.00†	10.579	234.248	3681.86	-341.96	-269.17	-373.87	3302738.66	1363336.38	40.3256711	-104.4141709	0.00	
3823.00†	10.579	234.248	3780.16	-355.58	-279.89	-388.77	3302723.90	1363325.48	40.3256417	-104.4142243	0.00	
3923.00†	10.579	234.248	3878.46	-369.21	-290.62	-403.67	3302709.13	1363314.57	40.3256123	-104.4142777	0.00	
4023.00†	10.579	234.248	3976.76	-382.84	-301.35	-418.57	3302694.36	1363303.66	40.3255828	-104.4143312	0.00	
4123.00†	10.579	234.248	4075.06	-396.47	-312.07	-433.47	3302679.60	1363292.75	40.3255534	-104.4143846	0.00	
4223.00†	10.579	234.248	4173.36	-410.10	-322.80	-448.37	3302664.83	1363281.84	40.3255239	-104.4144380	0.00	
4323.00†	10.579	234.248	4271.66	-423.72	-333.53	-463.27	3302650.07	1363270.94	40.3254945	-104.4144915	0.00	
4423.00†	10.579	234.248	4369.96	-437.35	-344.25	-478.16	3302635.30	1363260.03	40.3254650	-104.4145449	0.00	
4523.00†	10.579	234.248	4468.26	-450.98	-354.98	-493.06	3302620.53	1363249.12	40.3254356	-104.4145983	0.00	
4623.00†	10.579	234.248	4566.56	-464.61	-365.71	-507.96	3302605.77	1363238.21	40.3254061	-104.4146518	0.00	
4723.00†	10.579	234.248	4664.86	-478.23	-376.43	-522.86	3302591.00	1363227.30	40.3253767	-104.4147052	0.00	
4823.00†	10.579	234.248	4763.16	-491.86	-387.16	-537.76	3302576.23	1363216.39	40.3253473	-104.4147586	0.00	
4923.00†	10.579	234.248	4861.46	-505.49	-397.89	-552.66	3302561.47	1363205.49	40.3253178	-104.4148121	0.00	
5023.00†	10.579	234.248	4959.76	-519.12	-408.61	-567.56	3302546.70	1363194.58	40.3252884	-104.4148655	0.00	
5123.00†	10.579	234.248	5058.06	-532.75	-419.34	-582.46	3302531.94	1363183.67	40.3252589	-104.4149189	0.00	
5223.00†	10.579	234.248	5156.36	-546.37	-430.07	-597.36	3302517.17	1363172.76	40.3252295	-104.4149724	0.00	
5323.00†	10.579	234.248	5254.66	-560.00	-440.79	-612.26	3302502.40	1363161.85	40.3252000	-104.4150258	0.00	
5423.00†	10.579	234.248	5352.96	-573.63	-451.52	-627.16	3302487.64	1363150.95	40.3251706	-104.4150793	0.00	

Planned Wellpath Report

BIGFOOT 11-4-4 PWP Rev-B.0

Page 4 of 8

REFERENCE WELLPATH IDENTIFICATION

Operator	CONFLUENCE RESOURCES	Well	BIGFOOT 11-4-4
Field	WELD COUNTY (NAD83, TRUE NORTH)	API/Legal	
Facility	SEC.11-T04N-R63W	Wellbore	BIGFOOT 11-4-4 PWB
Slot	SLOT#02 BIGFOOT 11-4-4 (2430'FSL & 620'FWL,SEC.11)		

WELLPATH DATA (122 stations) † = interpolated, ‡ = extrapolated station

MD [ft]	Inclination [°]	Azimuth [°]	TVD [ft]	Vert Sect [ft]	North [ft]	East [ft]	Grid East [US ft]	Grid North [US ft]	Latitude	Longitude	DLS [°/100ft]	Comments
5523.00†	10.579	234.248	5451.26	-587.26	-462.25	-642.06	3302472.87	1363140.04	40.3251411	-104.4151327	0.00	
5623.00†	10.579	234.248	5549.56	-600.89	-472.98	-656.96	3302458.10	1363129.13	40.3251117	-104.4151861	0.00	
5723.00†	10.579	234.248	5647.86	-614.51	-483.70	-671.86	3302443.34	1363118.22	40.3250822	-104.4152396	0.00	
5823.00†	10.579	234.248	5746.16	-628.14	-494.43	-686.76	3302428.57	1363107.31	40.3250528	-104.4152930	0.00	
5923.00†	10.579	234.248	5844.46	-641.77	-505.16	-701.66	3302413.81	1363096.40	40.3250234	-104.4153464	0.00	
5978.52	10.579	234.248	5899.03	-649.33	-511.11	-709.93	3302405.61	1363090.35	40.3250070	-104.4153761	0.00	KOP
6023.00†	7.383	214.005	5942.98	-653.70	-515.87	-714.84	3302400.75	1363085.53	40.3249939	-104.4153937	10.00	
6123.00†	8.331	135.042	6042.29	-651.02	-526.35	-713.31	3302402.41	1363075.07	40.3249652	-104.4153882	10.00	
6223.00†	16.839	109.233	6139.86	-631.20	-536.27	-694.47	3302421.37	1363065.38	40.3249379	-104.4153207	10.00	
6323.00†	26.400	101.076	6232.74	-594.83	-545.34	-658.89	3302457.06	1363056.75	40.3249131	-104.4151930	10.00	
6423.00†	36.188	97.084	6318.10	-543.03	-553.27	-607.64	3302508.40	1363049.45	40.3248913	-104.4150093	10.00	
6523.00†	46.057	94.620	6393.34	-477.36	-559.83	-542.30	3302573.82	1363043.69	40.3248733	-104.4147749	10.00	
6623.00†	55.964	92.865	6456.18	-399.82	-564.81	-464.83	3302651.33	1363039.66	40.3248596	-104.4144971	10.00	
6723.00†	65.891	91.480	6504.72	-312.76	-568.07	-377.61	3302738.59	1363037.47	40.3248507	-104.4141842	10.00	
6823.00†	75.829	90.297	6537.46	-218.84	-569.50	-283.27	3302832.93	1363037.20	40.3248468	-104.4138459	10.00	
6923.00†	85.772	89.214	6553.43	-120.90	-569.07	-184.68	3302931.50	1363038.84	40.3248479	-104.4134923	10.00	
6965.52	90.000	88.766	6555.00†	-78.76	-568.32	-142.20	3302973.97	1363040.11	40.3248500	-104.4133400	10.00	LANDING
7023.00†	90.000	88.766	6555.00	-21.78	-567.08	-84.74	3303031.41	1363042.05	40.3248534	-104.4131339	0.00	
7123.00†	90.000	88.766	6555.00	77.35	-564.93	15.24	3303131.35	1363045.43	40.3248593	-104.4127753	0.00	
7223.00†	90.000	88.766	6555.00	176.48	-562.77	115.21	3303231.29	1363048.81	40.3248652	-104.4124168	0.00	
7323.00†	90.000	88.766	6555.00	275.61	-560.62	215.19	3303331.22	1363052.19	40.3248711	-104.4120582	0.00	
7423.00†	90.000	88.766	6555.00	374.74	-558.47	315.17	3303431.16	1363055.57	40.3248770	-104.4116997	0.00	
7523.00†	90.000	88.766	6555.00	473.88	-556.31	415.15	3303531.10	1363058.95	40.3248829	-104.4113411	0.00	
7623.00†	90.000	88.766	6555.00	573.01	-554.16	515.12	3303631.04	1363062.32	40.3248889	-104.4109826	0.00	
7723.00†	90.000	88.766	6555.00	672.14	-552.00	615.10	3303730.98	1363065.70	40.3248948	-104.4106240	0.00	
7823.00†	90.000	88.766	6555.00	771.27	-549.85	715.08	3303830.92	1363069.08	40.3249007	-104.4102655	0.00	
7923.00†	90.000	88.766	6555.00	870.40	-547.70	815.05	3303930.86	1363072.46	40.3249066	-104.4099069	0.00	
8023.00†	90.000	88.766	6555.00	969.54	-545.54	915.03	3304030.79	1363075.84	40.3249125	-104.4095483	0.00	
8123.00†	90.000	88.766	6555.00	1068.67	-543.39	1015.01	3304130.73	1363079.22	40.3249184	-104.4091898	0.00	
8223.00†	90.000	88.766	6555.00	1167.80	-541.24	1114.98	3304230.67	1363082.60	40.3249243	-104.4088312	0.00	

Planned Wellpath Report

BIGFOOT 11-4-4 PWP Rev-B.0

Page 5 of 8

REFERENCE WELLPATH IDENTIFICATION

Operator	CONFLUENCE RESOURCES	Well	BIGFOOT 11-4-4
Field	WELD COUNTY (NAD83, TRUE NORTH)	API/Legal	
Facility	SEC.11-T04N-R63W	Wellbore	BIGFOOT 11-4-4 PWB
Slot	SLOT#02 BIGFOOT 11-4-4 (2430'FSL & 620'FWL,SEC.11)		

WELLPATH DATA (122 stations) † = interpolated, ‡ = extrapolated station

MD [ft]	Inclination [°]	Azimuth [°]	TVD [ft]	Vert Sect [ft]	North [ft]	East [ft]	Grid East [US ft]	Grid North [US ft]	Latitude	Longitude	DLS [°/100ft]	Comments
8323.00†	90.000	88.766	6555.00	1266.93	-539.08	1214.96	3304330.61	1363085.98	40.3249302	-104.4084727	0.00	
8423.00†	90.000	88.766	6555.00	1366.06	-536.93	1314.94	3304430.55	1363089.36	40.3249361	-104.4081141	0.00	
8523.00†	90.000	88.766	6555.00	1465.19	-534.77	1414.91	3304530.49	1363092.74	40.3249420	-104.4077556	0.00	
8623.00†	90.000	88.766	6555.00	1564.33	-532.62	1514.89	3304630.42	1363096.12	40.3249479	-104.4073970	0.00	
8723.00†	90.000	88.766	6555.00	1663.46	-530.47	1614.87	3304730.36	1363099.50	40.3249538	-104.4070384	0.00	
8823.00†	90.000	88.766	6555.00	1762.59	-528.31	1714.84	3304830.30	1363102.87	40.3249597	-104.4066799	0.00	
8923.00†	90.000	88.766	6555.00	1861.72	-526.16	1814.82	3304930.24	1363106.25	40.3249655	-104.4063213	0.00	
9023.00†	90.000	88.766	6555.00	1960.85	-524.01	1914.80	3305030.18	1363109.63	40.3249714	-104.4059628	0.00	
9123.00†	90.000	88.766	6555.00	2059.98	-521.85	2014.77	3305130.12	1363113.01	40.3249773	-104.4056042	0.00	
9223.00†	90.000	88.766	6555.00	2159.12	-519.70	2114.75	3305230.06	1363116.39	40.3249832	-104.4052457	0.00	
9323.00†	90.000	88.766	6555.00	2258.25	-517.54	2214.73	3305329.99	1363119.77	40.3249891	-104.4048871	0.00	
9423.00†	90.000	88.766	6555.00	2357.38	-515.39	2314.70	3305429.93	1363123.15	40.3249950	-104.4045285	0.00	
9523.00†	90.000	88.766	6555.00	2456.51	-513.24	2414.68	3305529.87	1363126.53	40.3250009	-104.4041700	0.00	
9623.00†	90.000	88.766	6555.00	2555.64	-511.08	2514.66	3305629.81	1363129.91	40.3250068	-104.4038114	0.00	
9723.00†	90.000	88.766	6555.00	2654.77	-508.93	2614.64	3305729.75	1363133.29	40.3250126	-104.4034529	0.00	
9823.00†	90.000	88.766	6555.00	2753.91	-506.77	2714.61	3305829.69	1363136.67	40.3250185	-104.4030943	0.00	
9923.00†	90.000	88.766	6555.00	2853.04	-504.62	2814.59	3305929.62	1363140.05	40.3250244	-104.4027357	0.00	
10023.00†	90.000	88.766	6555.00	2952.17	-502.47	2914.57	3306029.56	1363143.43	40.3250303	-104.4023772	0.00	
10123.00†	90.000	88.766	6555.00	3051.30	-500.31	3014.54	3306129.50	1363146.80	40.3250362	-104.4020186	0.00	
10223.00†	90.000	88.766	6555.00	3150.43	-498.16	3114.52	3306229.44	1363150.18	40.3250420	-104.4016601	0.00	
10323.00†	90.000	88.766	6555.00	3249.56	-496.01	3214.50	3306329.38	1363153.56	40.3250479	-104.4013015	0.00	
10423.00†	90.000	88.766	6555.00	3348.70	-493.85	3314.47	3306429.32	1363156.94	40.3250538	-104.4009430	0.00	
10523.00†	90.000	88.766	6555.00	3447.83	-491.70	3414.45	3306529.26	1363160.32	40.3250597	-104.4005844	0.00	
10623.00†	90.000	88.766	6555.00	3546.96	-489.54	3514.43	3306629.19	1363163.70	40.3250655	-104.4002258	0.00	
10723.00†	90.000	88.766	6555.00	3646.09	-487.39	3614.40	3306729.13	1363167.08	40.3250714	-104.3998673	0.00	
10823.00†	90.000	88.766	6555.00	3745.22	-485.24	3714.38	3306829.07	1363170.46	40.3250773	-104.3995087	0.00	
10923.00†	90.000	88.766	6555.00	3844.36	-483.08	3814.36	3306929.01	1363173.84	40.3250832	-104.3991502	0.00	
11023.00†	90.000	88.766	6555.00	3943.49	-480.93	3914.33	3307028.95	1363177.22	40.3250890	-104.3987916	0.00	
11123.00†	90.000	88.766	6555.00	4042.62	-478.78	4014.31	3307128.89	1363180.60	40.3250949	-104.3984330	0.00	
11223.00†	90.000	88.766	6555.00	4141.75	-476.62	4114.29	3307228.82	1363183.98	40.3251008	-104.3980745	0.00	



Planned Wellpath Report

BIGFOOT 11-4-4 PWP Rev-B.0

Page 6 of 8



REFERENCE WELLPATH IDENTIFICATION

Operator	CONFLUENCE RESOURCES	Well	BIGFOOT 11-4-4
Field	WELD COUNTY (NAD83, TRUE NORTH)	API/Legal	
Facility	SEC.11-T04N-R63W	Wellbore	BIGFOOT 11-4-4 PWB
Slot	SLOT#02 BIGFOOT 11-4-4 (2430'FSL & 620'FWL,SEC.11)		

WELLPATH DATA (122 stations) † = interpolated, ‡ = extrapolated station

MD [ft]	Inclination [°]	Azimuth [°]	TVD [ft]	Vert Sect [ft]	North [ft]	East [ft]	Grid East [US ft]	Grid North [US ft]	Latitude	Longitude	DLS [°/100ft]	Comments
11323.00†	90.000	88.766	6555.00	4240.88	-474.47	4214.26	3307328.76	1363187.35	40.3251066	-104.3977159	0.00	
11380.43	90.000	88.766	6555.00‡	4297.81	-473.23	4271.68	3307386.16	1363189.30	40.3251100	-104.3975100	0.00	TD

HOLE & CASING SECTIONS

- Ref Wellbore: BIGFOOT 11-4-4 PWB Ref Wellpath: BIGFOOT 11-4-4 PWP Rev-B.0

String/Diameter	Start MD [ft]	End MD [ft]	Interval [ft]	Start TVD [ft]	End TVD [ft]	Start N/S [ft]	Start E/W [ft]	End N/S [ft]	End E/W [ft]
9.625in Casing Surface	23.00	1706.87	1683.87	23.00	1700.00	0.00	0.00	-52.90	-73.48

TARGETS

Name	MD [ft]	TVD [ft]	North [ft]	East [ft]	Grid East [US ft]	Grid North [US ft]	Latitude	Longitude	Shape
SEC.11-T04N-R63W	N/A	-2.50	25.50	0.00	3303108.87	1363635.60	40.3264800	-104.4128300	polygon
2D Polygon: dimensions not calculated									
SEC.11-T04N-R63W 470' SETBACK	N/A	-2.50	25.50	0.00	3303108.87	1363635.60	40.3264800	-104.4128300	polygon
2D Polygon: dimensions not calculated									
2) BIGFOOT 11-4-4 BHL REV-1 (1862'FSL & 470'FEL,SEC.11)	11380.43	6555.00	-473.23	4271.68	3307386.16	1363189.30	40.3251100	-104.3975100	point
1) BIGFOOT 11-4-4 LP REV-1 (1862'FSL & 470'FWL,SEC.11)	6965.52	6555.00	-568.32	-142.20	3302973.97	1363040.11	40.3248500	-104.4133400	point



Planned Wellpath Report

BIGFOOT 11-4-4 PWP Rev-B.0

Page 7 of 8



REFERENCE WELLPATH IDENTIFICATION

Operator	CONFLUENCE RESOURCES	Well	BIGFOOT 11-4-4
Field	WELD COUNTY (NAD83, TRUE NORTH)	API/Legal	
Facility	SEC.11-T04N-R63W	Wellbore	BIGFOOT 11-4-4 PWB
Slot	SLOT#02 BIGFOOT 11-4-4 (2430'FSL & 620'FWL,SEC.11)		

SURVEY PROGRAM - Ref Wellbore: BIGFOOT 11-4-4 PWB Ref Wellpath: BIGFOOT 11-4-4 PWP Rev-B.0

Start MD [ft]	End MD [ft]	Positional Uncertainty Model	Log Name/Comment	Wellbore
23.00	1706.87	BH NaviTrak (2019) (Axial)		BIGFOOT 11-4-4 PWB
1706.87	11380.43	BH AutoTrak Curve/eXpress (2019) (Short spacing)		BIGFOOT 11-4-4 PWB



Planned Wellpath Report

BIGFOOT 11-4-4 PWP Rev-B.0

Page 8 of 8



REFERENCE WELLPATH IDENTIFICATION

Operator	CONFLUENCE RESOURCES	Well	BIGFOOT 11-4-4
Field	WELD COUNTY (NAD83, TRUE NORTH)	API/Legal	
Facility	SEC.11-T04N-R63W	Wellbore	BIGFOOT 11-4-4 PWB
Slot	SLOT#02 BIGFOOT 11-4-4 (2430'FSL & 620'FWL,SEC.11)		

DESIGN COMMENTS

MD [ft]	Inclination [°]	Azimuth [°]	TVD [ft]	Comment
23.00	0.000	234.248	23.00	Tie On
950.00	0.000	234.248	950.00	End of Tangent
1478.95	10.579	234.248	1475.95	End of Build (J)
1706.87	10.579	234.248	1700.00	End of Tangent (J)
1806.87	10.579	234.248	1798.30	End of Tangent
5978.52	10.579	234.248	5899.03	KOP
6965.52	90.000	88.766	6555.00	LANDING
11380.43	90.000	88.766	6555.00	TD



Closest Approach Clearance Summary Report

BIGFOOT 11-4-4 PWP Rev-B.0 - SPE WPTS Stop
Drilling HSE Risk (2017)
Page 1 of 3



REFERENCE WELLPATH IDENTIFICATION			
Operator	CONFLUENCE RESOURCES	Well	BIGFOOT 11-4-4
Field	WELD COUNTY (NAD83, TRUE NORTH)	API/Legal	
Facility	SEC.11-T04N-R63W	Wellbore	BIGFOOT 11-4-4 PWB
Slot	SLOT#02 BIGFOOT 11-4-4 (2430'FSL & 620'FWL,SEC.11)		

REPORT SETUP INFORMATION			
Projection System	NAD83 / Lambert Colorado SP, Northern Zone (501), US feet	Software System	WellArchitect® 6.0
North Reference	True	User	Painsetr
Scale	0.999958	Report Generated	4/26/2022 at 1:30:29 PM
Convergence at slot	0.70° East	Database	WellArchitectDB

WELLPATH LOCATION						
	Local coordinates		Grid coordinates		Geographic coordinates	
	North[ft]	East[ft]	Easting[US ft]	Northing[US ft]	Latitude	Longitude
Slot Location	-25.50	-0.00	3303109.19	1363610.10	40.3264100°	-104.4128300°
Facility Reference Pt			3303108.87	1363635.60	40.3264800°	-104.4128300°
Field Reference Pt			3230456.90	1245096.09	40.0032400°	-104.6773400°

WELLPATH DATUM			
Calculation method	Minimum Curvature	Rig (23') (KB) to Facility Vertical Datum	4639.00ft
Horizontal Reference Pt	Slot	Rig (23') (KB) to Mean Sea Level	4639.00ft
Vertical Reference Pt	Rig (23') (KB)	Rig (23') (KB) to Ground Level at Slot (SLOT#02 BIGFOOT 11-4-4 (2430'FSL & 620'FWL,SEC.11))	23.00ft
MD Reference Pt	Rig (23') (KB)		
Field Vertical Reference	Mean Sea Level		

POSITIONAL UNCERTAINTY CALCULATION SETTINGS					
Ellipse Confidence Limit	3.50 Std Dev	Ellipse Start MD	23.00ft	Surface Position Uncertainty	included
Declination	7.76° East of TN	Dip Angle	66.72°	Mag Field Strength	51850 nT
Slot Surface Uncertainty @1SD		Horizontal	0.100ft	Vertical	1.000ft
Facility Surface Uncertainty @1SD		Horizontal	8.200ft	Vertical	3.000ft
Positional Uncertainty values in the WELLPATH DATA table are the projection of the ellipsoid of uncertainty onto the vertical and horizontal planes					



Closest Approach Clearance Summary Report

BIGFOOT 11-4-4 PWP Rev-B.0 - SPE WPTS Stop
Drilling HSE Risk (2017)
Page 2 of 3



REFERENCE WELLPATH IDENTIFICATION

Operator	CONFLUENCE RESOURCES	Well	BIGFOOT 11-4-4
Field	WELD COUNTY (NAD83, TRUE NORTH)	API/Legal	
Facility	SEC.11-T04N-R63W	Wellbore	BIGFOOT 11-4-4 PWB
Slot	SLOT#02 BIGFOOT 11-4-4 (2430'FSL & 620'FWL,SEC.11)		

PROXIMITY-SCAN RULE

Rule Name	SPE WPTS Stop Drilling HSE Risk (2017)	Rule Based On	Ratio
Plane of Rule	Closest Approach	Threshold Value	1.00
Include Casing & Hole Size	yes	Apply Cone of Safety	no

HOLE & CASING SECTIONS

- Ref Wellbore: BIGFOOT 11-4-4 PWB Ref Wellpath: BIGFOOT 11-4-4 PWP Rev-B.0

String/Diameter	Start MD [ft]	End MD [ft]	Interval [ft]	Start TVD [ft]	End TVD [ft]	Start N/S [ft]	Start E/W [ft]	End N/S [ft]	End E/W [ft]
9.625in Casing Surface	23.00	1706.87	1683.87	23.00	1700.00	0.00	0.00	-52.90	-73.48

SURVEY PROGRAM - Ref Wellbore: BIGFOOT 11-4-4 PWB Ref Wellpath: BIGFOOT 11-4-4 PWP Rev-B.0

Start MD [ft]	End MD [ft]	Positional Uncertainty Model	Log Name/Comment	Wellbore
23.00	1706.87	BH NaviTrak (2019) (Axial)		BIGFOOT 11-4-4 PWB
1706.87	11380.43	BH AutoTrak Curve/eXpress (2019) (Short spacing)		BIGFOOT 11-4-4 PWB



Closest Approach Clearance Summary Report

BIGFOOT 11-4-4 PWP Rev-B.0 - SPE WPTS Stop
Drilling HSE Risk (2017)
Page 3 of 3



REFERENCE WELLPATH IDENTIFICATION

Operator	CONFLUENCE RESOURCES	Well	BIGFOOT 11-4-4
Field	WELD COUNTY (NAD83, TRUE NORTH)	API/Legal	
Facility	SEC.11-T04N-R63W	Wellbore	BIGFOOT 11-4-4 PWB
Slot	SLOT#02 BIGFOOT 11-4-4 (2430'FSL & 620'FWL,SEC.11)		

CALCULATION RANGE & CUTOFF

From: 23.00ft MD	To: 11380.43ft MD	C-C Cutoff: (none)
------------------	-------------------	--------------------

OFFSET WELL CLEARANCE SUMMARY (17 Offset Wellpaths selected) Ratios are calculated in Closest Approach plane

Offset Facility	Offset Slot	Offset Well	Offset Wellbore	Offset Wellpath	Wellbore Status	C-C Clearance Distance			Rule Separation Ratio			
						Ref MD [ft]	Min C-C Clear Dist [ft]	Diverging from MD [ft]	Ref MD of Min Ratio [ft]	Min Ratio	Min Ratio Dvrg from [ft]	Rule Status
SEC.11-T04N-R63W	SLOT#03 BIGFOOT 11-9-2 (2405'FSL & 620'FWL,SEC.11)	BIGFOOT 11-9-2	BIGFOOT 11-9-2 PWB	BIGFOOT 11-9-2 PWP Rev-B.0	Planned	23.00	21.86	11323.00	11380.43	1.06	11380.43	WARN
SEC.11-T04N-R63W	SLOT#20 BIGFOOT 11-7-3 (2281'FSL & 470'FWL,SEC.11)	BIGFOOT 11-7-3	BIGFOOT 11-7-3 PWB	BIGFOOT 11-7-3 PWP Rev-B.0	Planned	2696.03	114.66	11380.43	11380.43	1.29	11380.43	PASS
SEC.11-T04N-R63W	SLOT#01 BIGFOOT 11-8-1 (2455'FSL & 620'FWL,SEC.11)	BIGFOOT 11-8-1	BIGFOOT 11-8-1 PWB	BIGFOOT 11-8-1 PWP Rev-B.0	Planned	23.00	25.50	11380.43	11380.43	1.37	11380.43	PASS
SEC.11-T04N-R63W	SLOT#04 BIGFOOT 11-10-3 (2380'FSL & 620'FWL,SEC.11)	BIGFOOT 11-10-3	BIGFOOT 11-10-3 PWB	BIGFOOT 11-10-3 PWP Rev-B.0	Planned	23.00	47.36	11323.00	11380.43	1.48	11380.43	PASS
SEC.11-T04N-R63W	SLOT#19 BIGFOOT 11-6-2 (2306'FSL & 470'FWL,SEC.11)	BIGFOOT 11-6-2	BIGFOOT 11-6-2 PWB	BIGFOOT 11-6-2 PWP Rev-B.0	Planned	2099.03	134.46	2099.03	11380.43	2.15	11380.43	PASS
SEC.11-T04N-R63W	SLOT#05 BIGFOOT 11-11-1 (2355'FSL & 620'FWL,SEC.11)	BIGFOOT 11-11-1	BIGFOOT 11-11-1 PWB	BIGFOOT 11-11-1 PWP Rev-B.0	Planned	23.00	72.86	11323.00	11380.43	2.36	11380.43	PASS
SEC.11-T04N-R63W	SLOT#06 BIGFOOT 11-5-4 (2330'FSL & 620'FWL,SEC.11)	BIGFOOT 11-5-4	BIGFOOT 11-5-4 PWB	BIGFOOT 11-5-4 PWP Rev-B.0	Planned	23.00	98.36	11323.00	11380.43	2.60	11380.43	PASS
SEC.11-T04N-R63W	SLOT#18 BIGFOOT 11-3-4 (2331'FSL & 470'FWL,SEC.11)	BIGFOOT 11-3-4	BIGFOOT 11-3-4 PWB	BIGFOOT 11-3-4 PWP Rev-B.0	Planned	1793.78	142.28	1793.78	11380.43	2.60	11380.43	PASS
SEC.11-T04N-R63W	SLOT#17 BIGFOOT 11-5-1 (2356'FSL & 470'FWL,SEC.11)	BIGFOOT 11-5-1	BIGFOOT 11-5-1 PWB	BIGFOOT 11-5-1 PWP Rev-B.0	Planned	1601.69	147.58	1601.69	11380.43	3.22	11380.43	PASS
SEC.11-T04N-R63W	SLOT#07 BIGFOOT 11-12-2 (2305'FSL & 620'FWL,SEC.11)	BIGFOOT 11-12-2	BIGFOOT 11-12-2 PWB	BIGFOOT 11-12-2 PWP Rev-B.0	Planned	23.00	123.90	11323.00	11380.43	3.29	11380.43	PASS
SEC.11-T04N-R63W	SLOT#16 BIGFOOT 11-4-3 (2381'FSL & 470'FWL,SEC.11)	BIGFOOT 11-4-3	BIGFOOT 11-4-3 PWB	BIGFOOT 11-4-3 PWP Rev-B.0	Planned	1339.53	157.34	1339.53	11380.43	3.83	11380.43	PASS
SEC.11-T04N-R63W	SLOT#08 BIGFOOT 11-13-3 (2280'FSL & 620'FWL,SEC.11)	BIGFOOT 11-13-3	BIGFOOT 11-13-3 PWB	BIGFOOT 11-13-3 PWP Rev-B.0	Planned	23.00	149.39	523.00	11380.43	4.04	11380.43	PASS
SEC.11-T04N-R63W	SLOT#15 BIGFOOT 11-3-2 (2406'FSL & 470'FWL,SEC.11)	BIGFOOT 11-3-2	BIGFOOT 11-3-2 PWB	BIGFOOT 11-3-2 PWP Rev-B.0	Planned	23.00	152.71	723.00	11380.43	4.66	11380.43	PASS
SEC.11-T04N-R63W	SLOT#14 BIGFOOT 11-2-4 (2431'FSL & 470'FWL,SEC.11)	BIGFOOT 11-2-4	BIGFOOT 11-2-4 PWB	BIGFOOT 11-2-4 PWP Rev-B.0	Planned	23.00	150.57	623.00	11380.43	5.20	11380.43	PASS
SEC.10-T04N-R63W	SLOT#02 70 RANCH 10-11-2 (2360'FNL & 514'FEL, SEC.10)	70 RANCH 10-11-2	70 RANCH 10-11-2 AWB	70 RANCH 10-11-2 AWP	Drilling	2283.07	1105.33	11380.43	11380.43	6.39	11380.43	PASS

OFFSET WELL CLEARANCE SUMMARY (17 Offset Wellpaths selected) Ratios are calculated in Closest Approach plane												
Offset Facility	Offset Slot	Offset Well	Offset Wellbore	Offset Wellpath	Wellbore Status	C-C Clearance Distance			Rule Separation Ratio			
						Ref MD [ft]	Min C-C Clear Dist [ft]	Diverging from MD [ft]	Ref MD of Min Ratio [ft]	Min Ratio	Min Ratio Dvrg from [ft]	Rule Status
SEC.10-T04N-R63W	SLOT#01 70 RANCH 10-11-1 (2345'FNL & 514'FEL, SEC.10)	70 RANCH 10-11-1	70 RANCH 10-11-1 AWB	70 RANCH 10-11-1 AWP	Drilling	23.00	1217.44	11380.43	11380.43	7.71	11380.43	PASS
SEC.11-T04N-R63W	SLOT#13 BIGFOOT 11-1-4 (2456'FSL & 470'FWL,SEC.11)	BIGFOOT 11-1-4	BIGFOOT 11-1-4 PWB	BIGFOOT 11-1-4 PWP Rev-B.0	Planned	23.00	152.71	223.00	11380.43	8.05	11380.43	PASS