

CONFLUENCE RESOURCES



Location:	COLORADO	Slot:	SLOT#01 BIGFOOT 11-8-1(2455°FSL & 620°FWL,SEC.11)
Field:	WELD COUNTY (NAD83, TRUE NORTH)	Well:	BIGFOOT 11-8-1
Facility:	SEC.11-T04N-R63W	Wellbore:	BIGFOOT 11-8-1 PWB

Plot reference wellpath is BIGFOOT 11-8-1 PWP RevB.0	Grid System: NAD83 / Lambert Colorado SP, Northern Zone (501), US feet
True vertical depths are referenced to Rig (23) (KB)	North Reference: True north
Reference wellpath measured depths are referenced to Rig (23) (KB)	Scale: True distance
Rig (23) (KB) to Mean Sea Level: 4639 feet	Coordinates are in feet referenced to Slot
Mean Sea Level to Ground level (At Slot: SLOT#01 BIGFOOT 11-8-1(2455°FSL & 620°FWL,SEC.11)): -4616 feet	Depths are in feet
Offset wellpath MDs are referenced to each path's default MD datum	Created by: paimseth on 2022-04-26; Database: WellArchitectDB

Location Information

Facility Name	Grid East (US ft)	Grid North (US ft)	Latitude	Longitude
SEC.11-T04N-R63W	3303108.873	1363635.600	40°19'35.3280"N	104°24'46.1880"W
Slot	Local N (ft)	Local E (ft)	Grid East (US ft)	Grid North (US ft)
SLOT#01 BIGFOOT 11-8-1(2455°FSL & 620°FWL,SEC.11)	0.00	0.00	3303108.873	1363635.600
Rig (23) (KB) to Ground level (At Slot: SLOT#01 BIGFOOT 11-8-1(2455°FSL & 620°FWL,SEC.11))			40°19'35.3280"N	104°24'46.1880"W
Mean Sea Level to Ground level (At Slot: SLOT#01 BIGFOOT 11-8-1(2455°FSL & 620°FWL,SEC.11))			23ft	
Rig (23) (KB) to Mean Sea Level			-4616ft	
			4639ft	

Hole and Casing Sections

Name	Start MD (ft)	End MD (ft)	Interval (ft)	Start TVD (ft)	End TVD (ft)	Start Local N (ft)	Start Local E (ft)	End Local N (ft)	End Local E (ft)	Wellbore
9.625in Casing Surface	23.00	1705.07	1682.07	23.00	1700.00	0.00	0.00	-39.20	-64.71	BIGFOOT 11-8-1 PWB

Survey Program

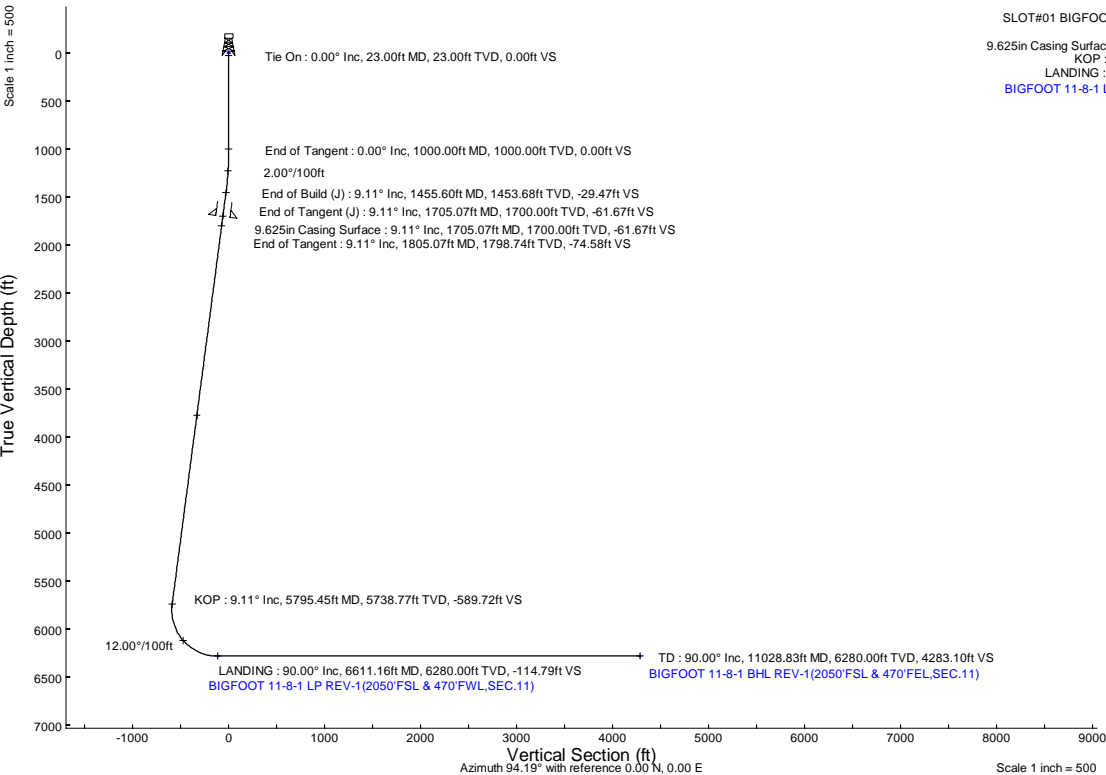
Start MD (ft)	End MD (ft)	Tool	Model	Log Name/Comment	Wellbore
23.00	1705.07	BH NavitTrak (2019)	BH NavitTrak (2019) (Axial)		BIGFOOT 11-8-1 PWB
1705.07	11028.83	BH AutoTrak Curve/eXpress (2019)	BH AutoTrak Curve/eXpress (2019) (Short spacing)		BIGFOOT 11-8-1 PWB

Bottom Hole Location

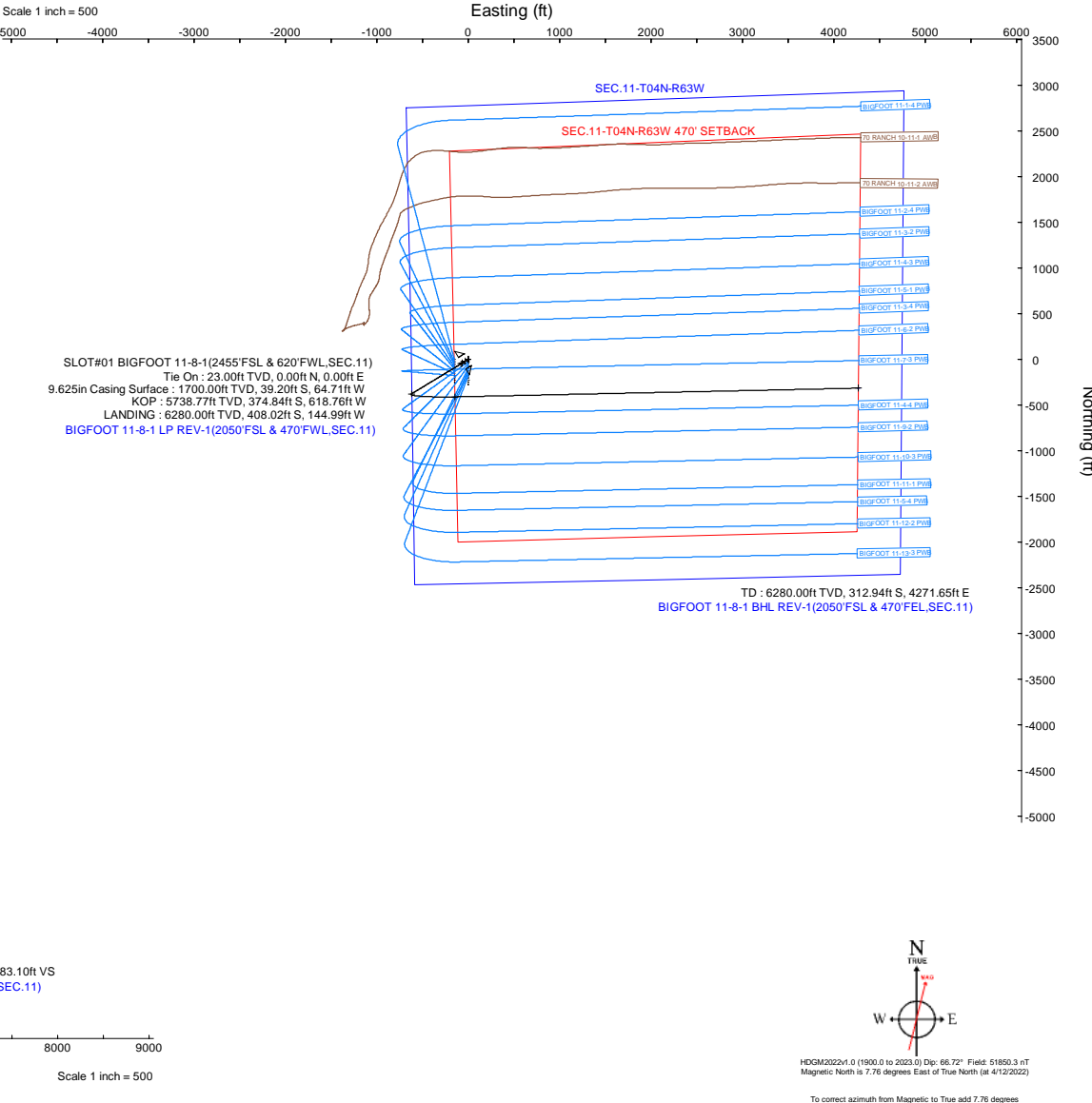
MD (ft)	Inc (°)	Az (°)	TVD (ft)	Local N (ft)	Local E (ft)	Grid East (US ft)	Grid North (US ft)	Latitude	Longitude
11028.83	90.000	88.767	6280.00	-312.94	4271.65	3307383.85	1363375.07	40°19'32.2320"N	104°23'51.0360"W

Targets

Name	MD (ft)	TVD (ft)	Local N (ft)	Local E (ft)	Grid East (US ft)	Grid North (US ft)	Latitude	Longitude
SEC.11-T04N-R63W	N/A	-2.50	0.00	0.00	3303108.87	1363635.60	40°19'35.3280"N	104°24'46.1880"W
SEC.11-T04N-R63W 470' SETBACK	N/A	-2.50	0.00	0.00	3303108.87	1363635.60	40°19'35.3280"N	104°24'46.1880"W
BIGFOOT 11-8-1 BHL REV-1(2050°FSL & 470°FEL,SEC.11)	11028.83	6280.00	-312.94	4271.65	3307383.85	1363375.07	40°19'32.2320"N	104°23'51.0360"W
BIGFOOT 11-8-1 LP REV-1(2050°FSL & 470°FWL,SEC.11)	6611.16	6280.00	-408.02	-144.99	3302988.90	1363225.85	40°19'31.2960"N	104°24'48.0600"W



Well Profile Data								
Design Comment	MD (ft)	Inc (°)	Az (°)	TVD (ft)	Local N (ft)	Local E (ft)	DLS (°/100ft)	VS (ft)
Tie On	23.00	0.000	238.793	23.00	0.00	0.00	0.00	0.00
End of Tangent	1000.00	0.000	238.793	1000.00	0.00	0.00	0.00	0.00
End of Build (J)	1455.60	9.112	238.793	1453.68	-18.73	-30.92	2.00	-29.47
End of Tangent (J)	1705.07	9.112	238.793	1700.00	-39.20	-64.71	0.00	-61.67
End of Tangent	1805.07	9.112	238.793	1798.74	-47.41	-78.26	0.00	-74.58
KOP	5795.45	9.112	238.793	5738.77	-374.84	-618.76	0.00	-589.72
LANDING	6611.16	90.000	88.767	6280.00	-408.02	-144.99	12.00	-114.79
TD	11028.83	90.000	88.767	6280.00	-312.94	4271.65	0.00	4283.10



HDGM2022v4.0 (1900.0 to 2023.0) Dp: 66.72" Field: 51850.3 nT  
Magnetic North is 7.76 degrees East of True North (at 4/12/2022)  
To correct azimuth from Magnetic to True add 7.76 degrees



# Planned Wellpath Report

BIGFOOT 11-8-1 PWP Rev-B.0

Page 1 of 6



## REFERENCE WELLPATH IDENTIFICATION

Operator	CONFLUENCE RESOURCES	Well	BIGFOOT 11-8-1
Field	WELD COUNTY (NAD83, TRUE NORTH)	API/Legal	
Facility	SEC.11-T04N-R63W	Wellbore	BIGFOOT 11-8-1 PWB
Slot	SLOT#01 BIGFOOT 11-8-1(2455'FSL & 620'FWL,SEC.11)		

## REPORT SETUP INFORMATION

Projection System	NAD83 / Lambert Colorado SP, Northern Zone (501), US feet	Software System	WellArchitect® 6.0
North Reference	True	User	Painsetr
Scale	0.999958	Report Generated	4/26/2022 at 1:22:56 PM
Convergence at slot	0.70° East	Database	WellArchitectDB

## WELLPATH LOCATION

	Local coordinates		Grid coordinates		Geographic coordinates	
	North[ft]	East[ft]	Easting[US ft]	Northing[US ft]	Latitude	Longitude
Slot Location	0.00	0.00	3303108.87	1363635.60	40.3264800°	-104.4128300°
Facility Reference Pt			3303108.87	1363635.60	40.3264800°	-104.4128300°
Field Reference Pt			3230456.90	1245096.09	40.0032400°	-104.6773400°

## WELLPATH DATUM

Calculation method	Minimum curvature	Rig (23') (KB) to Facility Vertical Datum	4639.00ft
Horizontal Reference Pt	Slot	Rig (23') (KB) to Mean Sea Level	4639.00ft
Vertical Reference Pt	Rig (23') (KB)	Rig (23') (KB) to Ground Level at Slot (SLOT#01 BIGFOOT 11-8-1(2455'FSL & 620'FWL,SEC.11))	23.00ft
MD Reference Pt	Rig (23') (KB)	Section Origin	N 0.00, E 0.00 ft
Field Vertical Reference	Mean Sea Level	Section Azimuth	94.19°



# Planned Wellpath Report

BIGFOOT 11-8-1 PWP Rev-B.0

Page 2 of 6



## REFERENCE WELLPATH IDENTIFICATION

Operator	CONFLUENCE RESOURCES	Well	BIGFOOT 11-8-1
Field	WELD COUNTY (NAD83, TRUE NORTH)	API/Legal	
Facility	SEC.11-T04N-R63W	Wellbore	BIGFOOT 11-8-1 PWB
Slot	SLOT#01 BIGFOOT 11-8-1(2455'FSL & 620'FWL,SEC.11)		

## WELLPATH DATA (119 stations) † = interpolated, ‡ = extrapolated station

MD [ft]	Inclination [°]	Azimuth [°]	TVD [ft]	Vert Sect [ft]	North [ft]	East [ft]	Grid East [US ft]	Grid North [US ft]	Latitude	Longitude	DLS [°/100ft]	Comments
0.00†	0.000	238.793	0.00	0.00	0.00	0.00	3303108.87	1363635.60	40.3264800	-104.4128300	0.00	
23.00	0.000	238.793	23.00	0.00	0.00	0.00	3303108.87	1363635.60	40.3264800	-104.4128300	0.00	Tie On
123.00†	0.000	238.793	123.00	0.00	0.00	0.00	3303108.87	1363635.60	40.3264800	-104.4128300	0.00	
223.00†	0.000	238.793	223.00	0.00	0.00	0.00	3303108.87	1363635.60	40.3264800	-104.4128300	0.00	
323.00†	0.000	238.793	323.00	0.00	0.00	0.00	3303108.87	1363635.60	40.3264800	-104.4128300	0.00	
423.00†	0.000	238.793	423.00	0.00	0.00	0.00	3303108.87	1363635.60	40.3264800	-104.4128300	0.00	
523.00†	0.000	238.793	523.00	0.00	0.00	0.00	3303108.87	1363635.60	40.3264800	-104.4128300	0.00	
623.00†	0.000	238.793	623.00	0.00	0.00	0.00	3303108.87	1363635.60	40.3264800	-104.4128300	0.00	
723.00†	0.000	238.793	723.00	0.00	0.00	0.00	3303108.87	1363635.60	40.3264800	-104.4128300	0.00	
823.00†	0.000	238.793	823.00	0.00	0.00	0.00	3303108.87	1363635.60	40.3264800	-104.4128300	0.00	
923.00†	0.000	238.793	923.00	0.00	0.00	0.00	3303108.87	1363635.60	40.3264800	-104.4128300	0.00	
1000.00	0.000	238.793	1000.00	0.00	0.00	0.00	3303108.87	1363635.60	40.3264800	-104.4128300	0.00	End of Tangent
1023.00†	0.460	238.793	1023.00	-0.08	-0.05	-0.08	3303108.79	1363635.55	40.3264799	-104.4128303	2.00	
1123.00†	2.460	238.793	1122.96	-2.15	-1.37	-2.26	3303106.63	1363634.20	40.3264762	-104.4128381	2.00	
1223.00†	4.460	238.793	1222.77	-7.07	-4.49	-7.42	3303101.51	1363631.01	40.3264677	-104.4128566	2.00	
1323.00†	6.460	238.793	1322.32	-14.83	-9.42	-15.56	3303093.43	1363625.99	40.3264541	-104.4128858	2.00	
1423.00†	8.460	238.793	1421.46	-25.41	-16.15	-26.66	3303082.41	1363619.12	40.3264357	-104.4129256	2.00	
1455.60	9.112	238.793	1453.68	-29.47	-18.73	-30.92	3303078.19	1363616.49	40.3264286	-104.4129409	2.00	End of Build (J)
1523.00†	9.112	238.793	1520.23	-38.17	-24.26	-40.05	3303069.13	1363610.85	40.3264134	-104.4129736	0.00	
1623.00†	9.112	238.793	1618.97	-51.08	-32.47	-53.59	3303055.68	1363602.48	40.3263909	-104.4130222	0.00	
1705.07	9.112	238.793	1700.00	-61.67	-39.20	-64.71	3303044.65	1363595.61	40.3263724	-104.4130621	0.00	End of Tangent (J)
1723.00†	9.112	238.793	1717.71	-63.99	-40.67	-67.14	3303042.24	1363594.11	40.3263684	-104.4130708	0.00	
1805.07	9.112	238.793	1798.74	-74.58	-47.41	-78.26	3303031.21	1363587.24	40.3263499	-104.4131107	0.00	End of Tangent
1823.00†	9.112	238.793	1816.45	-76.90	-48.88	-80.68	3303028.80	1363585.74	40.3263458	-104.4131194	0.00	
1923.00†	9.112	238.793	1915.18	-89.81	-57.08	-94.23	3303015.35	1363577.37	40.3263233	-104.4131680	0.00	
2023.00†	9.112	238.793	2013.92	-102.72	-65.29	-107.77	3303001.91	1363569.00	40.3263008	-104.4132165	0.00	
2123.00†	9.112	238.793	2112.66	-115.63	-73.49	-121.32	3302988.47	1363560.63	40.3262783	-104.4132651	0.00	
2223.00†	9.112	238.793	2211.40	-128.54	-81.70	-134.86	3302975.03	1363552.26	40.3262557	-104.4133137	0.00	
2323.00†	9.112	238.793	2310.14	-141.44	-89.90	-148.41	3302961.58	1363543.89	40.3262332	-104.4133623	0.00	
2423.00†	9.112	238.793	2408.87	-154.35	-98.11	-161.95	3302948.14	1363535.52	40.3262107	-104.4134108	0.00	

# Planned Wellpath Report

BIGFOOT 11-8-1 PWP Rev-B.0

Page 3 of 6

## REFERENCE WELLPATH IDENTIFICATION

Operator	CONFLUENCE RESOURCES	Well	BIGFOOT 11-8-1
Field	WELD COUNTY (NAD83, TRUE NORTH)	API/Legal	
Facility	SEC.11-T04N-R63W	Wellbore	BIGFOOT 11-8-1 PWB
Slot	SLOT#01 BIGFOOT 11-8-1(2455'FSL & 620'FWL,SEC.11)		

## WELLPATH DATA (119 stations) † = interpolated, ‡ = extrapolated station

MD [ft]	Inclination [°]	Azimuth [°]	TVD [ft]	Vert Sect [ft]	North [ft]	East [ft]	Grid East [US ft]	Grid North [US ft]	Latitude	Longitude	DLS [°/100ft]	Comments
2523.00†	9.112	238.793	2507.61	-167.26	-106.32	-175.50	3302934.70	1363527.15	40.3261882	-104.4134594	0.00	
2623.00†	9.112	238.793	2606.35	-180.17	-114.52	-189.04	3302921.26	1363518.78	40.3261656	-104.4135080	0.00	
2723.00†	9.112	238.793	2705.09	-193.08	-122.73	-202.59	3302907.81	1363510.40	40.3261431	-104.4135566	0.00	
2823.00†	9.112	238.793	2803.83	-205.99	-130.93	-216.13	3302894.37	1363502.03	40.3261206	-104.4136052	0.00	
2923.00†	9.112	238.793	2902.56	-218.90	-139.14	-229.68	3302880.93	1363493.66	40.3260981	-104.4136537	0.00	
3023.00†	9.112	238.793	3001.30	-231.81	-147.34	-243.22	3302867.48	1363485.29	40.3260755	-104.4137023	0.00	
3123.00†	9.112	238.793	3100.04	-244.72	-155.55	-256.77	3302854.04	1363476.92	40.3260530	-104.4137509	0.00	
3223.00†	9.112	238.793	3198.78	-257.63	-163.75	-270.32	3302840.60	1363468.55	40.3260305	-104.4137995	0.00	
3323.00†	9.112	238.793	3297.52	-270.54	-171.96	-283.86	3302827.16	1363460.18	40.3260080	-104.4138481	0.00	
3423.00†	9.112	238.793	3396.25	-283.45	-180.16	-297.41	3302813.71	1363451.81	40.3259855	-104.4138966	0.00	
3523.00†	9.112	238.793	3494.99	-296.36	-188.37	-310.95	3302800.27	1363443.44	40.3259629	-104.4139452	0.00	
3623.00†	9.112	238.793	3593.73	-309.27	-196.58	-324.50	3302786.83	1363435.07	40.3259404	-104.4139938	0.00	
3723.00†	9.112	238.793	3692.47	-322.18	-204.78	-338.04	3302773.38	1363426.70	40.3259179	-104.4140424	0.00	
3823.00†	9.112	238.793	3791.21	-335.08	-212.99	-351.59	3302759.94	1363418.33	40.3258954	-104.4140909	0.00	
3923.00†	9.112	238.793	3889.94	-347.99	-221.19	-365.13	3302746.50	1363409.96	40.3258728	-104.4141395	0.00	
4023.00†	9.112	238.793	3988.68	-360.90	-229.40	-378.68	3302733.05	1363401.59	40.3258503	-104.4141881	0.00	
4123.00†	9.112	238.793	4087.42	-373.81	-237.60	-392.22	3302719.61	1363393.22	40.3258278	-104.4142367	0.00	
4223.00†	9.112	238.793	4186.16	-386.72	-245.81	-405.77	3302706.17	1363384.85	40.3258053	-104.4142853	0.00	
4323.00†	9.112	238.793	4284.90	-399.63	-254.01	-419.31	3302692.73	1363376.48	40.3257827	-104.4143338	0.00	
4423.00†	9.112	238.793	4383.63	-412.54	-262.22	-432.86	3302679.28	1363368.10	40.3257602	-104.4143824	0.00	
4523.00†	9.112	238.793	4482.37	-425.45	-270.43	-446.40	3302665.84	1363359.73	40.3257377	-104.4144310	0.00	
4623.00†	9.112	238.793	4581.11	-438.36	-278.63	-459.95	3302652.40	1363351.36	40.3257152	-104.4144796	0.00	
4723.00†	9.112	238.793	4679.85	-451.27	-286.84	-473.49	3302638.95	1363342.99	40.3256926	-104.4145282	0.00	
4823.00†	9.112	238.793	4778.59	-464.18	-295.04	-487.04	3302625.51	1363334.62	40.3256701	-104.4145767	0.00	
4923.00†	9.112	238.793	4877.32	-477.09	-303.25	-500.58	3302612.07	1363326.25	40.3256476	-104.4146253	0.00	
5023.00†	9.112	238.793	4976.06	-490.00	-311.45	-514.13	3302598.62	1363317.88	40.3256251	-104.4146739	0.00	
5123.00†	9.112	238.793	5074.80	-502.91	-319.66	-527.67	3302585.18	1363309.51	40.3256025	-104.4147225	0.00	
5223.00†	9.112	238.793	5173.54	-515.82	-327.86	-541.22	3302571.74	1363301.14	40.3255800	-104.4147710	0.00	
5323.00†	9.112	238.793	5272.28	-528.73	-336.07	-554.76	3302558.30	1363292.77	40.3255575	-104.4148196	0.00	
5423.00†	9.112	238.793	5371.01	-541.64	-344.28	-568.31	3302544.85	1363284.40	40.3255350	-104.4148682	0.00	

# Planned Wellpath Report

BIGFOOT 11-8-1 PWP Rev-B.0

Page 4 of 6

## REFERENCE WELLPATH IDENTIFICATION

Operator	CONFLUENCE RESOURCES	Well	BIGFOOT 11-8-1
Field	WELD COUNTY (NAD83, TRUE NORTH)	API/Legal	
Facility	SEC.11-T04N-R63W	Wellbore	BIGFOOT 11-8-1 PWB
Slot	SLOT#01 BIGFOOT 11-8-1(2455'FSL & 620'FWL,SEC.11)		

## WELLPATH DATA (119 stations) † = interpolated, ‡ = extrapolated station

MD [ft]	Inclination [°]	Azimuth [°]	TVD [ft]	Vert Sect [ft]	North [ft]	East [ft]	Grid East [US ft]	Grid North [US ft]	Latitude	Longitude	DLS [°/100ft]	Comments
5523.00†	9.112	238.793	5469.75	-554.55	-352.48	-581.85	3302531.41	1363276.03	40.3255124	-104.4149168	0.00	
5623.00†	9.112	238.793	5568.49	-567.46	-360.69	-595.40	3302517.97	1363267.66	40.3254899	-104.4149654	0.00	
5723.00†	9.112	238.793	5667.23	-580.36	-368.89	-608.94	3302504.52	1363259.29	40.3254674	-104.4150139	0.00	
5795.45	9.112	238.793	5738.77	-589.72	-374.84	-618.76	3302494.78	1363253.22	40.3254511	-104.4150491	0.00	KOP
5823.00†	6.474	223.847	5766.06	-592.49	-377.09	-621.70	3302491.87	1363250.93	40.3254449	-104.4150597	12.00	
5923.00†	8.714	120.288	5865.53	-589.27	-385.00	-619.06	3302494.61	1363243.05	40.3254232	-104.4150502	12.00	
6023.00†	19.933	101.532	5962.31	-565.48	-392.26	-595.73	3302518.02	1363236.08	40.3254033	-104.4149665	12.00	
6123.00†	31.719	96.216	6052.17	-522.14	-398.54	-552.74	3302561.09	1363230.33	40.3253860	-104.4148123	12.00	
6223.00†	43.613	93.591	6131.20	-461.16	-403.56	-491.96	3302621.92	1363226.05	40.3253722	-104.4145944	12.00	
6323.00†	55.546	91.918	6195.92	-385.20	-407.12	-416.06	3302697.86	1363223.43	40.3253625	-104.4143222	12.00	
6423.00†	67.496	90.669	6243.52	-297.58	-409.05	-328.34	3302785.59	1363222.58	40.3253572	-104.4140076	12.00	
6523.00†	79.454	89.621	6271.91	-202.12	-409.26	-232.65	3302881.27	1363223.53	40.3253566	-104.4136644	12.00	
6611.16	90.000	88.767	6280.00†	-114.79	-408.02	-144.99	3302968.90	1363225.85	40.3253600	-104.4133500	12.00	LANDING
6623.00†	90.000	88.767	6280.00	-103.01	-407.77	-133.16	3302980.73	1363226.25	40.3253607	-104.4133076	0.00	
6723.00†	90.000	88.767	6280.00	-3.46	-405.62	-33.18	3303080.67	1363229.63	40.3253666	-104.4129490	0.00	
6823.00†	90.000	88.767	6280.00	96.10	-403.46	66.80	3303180.61	1363233.00	40.3253725	-104.4125904	0.00	
6923.00†	90.000	88.767	6280.00	195.65	-401.31	166.77	3303280.55	1363236.38	40.3253784	-104.4122319	0.00	
7023.00†	90.000	88.767	6280.00	295.20	-399.16	266.75	3303380.48	1363239.76	40.3253843	-104.4118733	0.00	
7123.00†	90.000	88.767	6280.00	394.75	-397.01	366.73	3303480.42	1363243.14	40.3253902	-104.4115148	0.00	
7223.00†	90.000	88.767	6280.00	494.30	-394.85	466.70	3303580.36	1363246.51	40.3253961	-104.4111562	0.00	
7323.00†	90.000	88.767	6280.00	593.86	-392.70	566.68	3303680.30	1363249.89	40.3254020	-104.4107976	0.00	
7423.00†	90.000	88.767	6280.00	693.41	-390.55	666.66	3303780.24	1363253.27	40.3254079	-104.4104391	0.00	
7523.00†	90.000	88.767	6280.00	792.96	-388.40	766.63	3303880.18	1363256.65	40.3254138	-104.4100805	0.00	
7623.00†	90.000	88.767	6280.00	892.51	-386.24	866.61	3303980.12	1363260.03	40.3254197	-104.4097220	0.00	
7723.00†	90.000	88.767	6280.00	992.07	-384.09	966.59	3304080.05	1363263.40	40.3254256	-104.4093634	0.00	
7823.00†	90.000	88.767	6280.00	1091.62	-381.94	1066.56	3304179.99	1363266.78	40.3254315	-104.4090048	0.00	
7923.00†	90.000	88.767	6280.00	1191.17	-379.79	1166.54	3304279.93	1363270.16	40.3254374	-104.4086463	0.00	
8023.00†	90.000	88.767	6280.00	1290.72	-377.63	1266.52	3304379.87	1363273.54	40.3254433	-104.4082877	0.00	
8123.00†	90.000	88.767	6280.00	1390.28	-375.48	1366.49	3304479.81	1363276.92	40.3254492	-104.4079292	0.00	
8223.00†	90.000	88.767	6280.00	1489.83	-373.33	1466.47	3304579.75	1363280.29	40.3254551	-104.4075706	0.00	

## REFERENCE WELLPATH IDENTIFICATION

Operator	CONFLUENCE RESOURCES	Well	BIGFOOT 11-8-1
Field	WELD COUNTY (NAD83, TRUE NORTH)	API/Legal	
Facility	SEC.11-T04N-R63W	Wellbore	BIGFOOT 11-8-1 PWB
Slot	SLOT#01 BIGFOOT 11-8-1(2455'FSL & 620'FWL,SEC.11)		

## WELLPATH DATA (119 stations) † = interpolated, ‡ = extrapolated station

MD [ft]	Inclination [°]	Azimuth [°]	TVD [ft]	Vert Sect [ft]	North [ft]	East [ft]	Grid East [US ft]	Grid North [US ft]	Latitude	Longitude	DLS [°/100ft]	Comments
8323.00†	90.000	88.767	6280.00	1589.38	-371.18	1566.45	3304679.68	1363283.67	40.3254610	-104.4072120	0.00	
8423.00†	90.000	88.767	6280.00	1688.93	-369.02	1666.42	3304779.62	1363287.05	40.3254669	-104.4068535	0.00	
8523.00†	90.000	88.767	6280.00	1788.49	-366.87	1766.40	3304879.56	1363290.43	40.3254728	-104.4064949	0.00	
8623.00†	90.000	88.767	6280.00	1888.04	-364.72	1866.38	3304979.50	1363293.80	40.3254787	-104.4061364	0.00	
8723.00†	90.000	88.767	6280.00	1987.59	-362.57	1966.36	3305079.44	1363297.18	40.3254846	-104.4057778	0.00	
8823.00†	90.000	88.767	6280.00	2087.14	-360.41	2066.33	3305179.38	1363300.56	40.3254904	-104.4054192	0.00	
8923.00†	90.000	88.767	6280.00	2186.69	-358.26	2166.31	3305279.32	1363303.94	40.3254963	-104.4050607	0.00	
9023.00†	90.000	88.767	6280.00	2286.25	-356.11	2266.29	3305379.25	1363307.32	40.3255022	-104.4047021	0.00	
9123.00†	90.000	88.767	6280.00	2385.80	-353.96	2366.26	3305479.19	1363310.69	40.3255081	-104.4043436	0.00	
9223.00†	90.000	88.767	6280.00	2485.35	-351.81	2466.24	3305579.13	1363314.07	40.3255140	-104.4039850	0.00	
9323.00†	90.000	88.767	6280.00	2584.90	-349.65	2566.22	3305679.07	1363317.45	40.3255199	-104.4036264	0.00	
9423.00†	90.000	88.767	6280.00	2684.46	-347.50	2666.19	3305779.01	1363320.83	40.3255257	-104.4032679	0.00	
9523.00†	90.000	88.767	6280.00	2784.01	-345.35	2766.17	3305878.95	1363324.21	40.3255316	-104.4029093	0.00	
9623.00†	90.000	88.767	6280.00	2883.56	-343.20	2866.15	3305978.89	1363327.58	40.3255375	-104.4025508	0.00	
9723.00†	90.000	88.767	6280.00	2983.11	-341.04	2966.12	3306078.82	1363330.96	40.3255434	-104.4021922	0.00	
9823.00†	90.000	88.767	6280.00	3082.67	-338.89	3066.10	3306178.76	1363334.34	40.3255492	-104.4018336	0.00	
9923.00†	90.000	88.767	6280.00	3182.22	-336.74	3166.08	3306278.70	1363337.72	40.3255551	-104.4014751	0.00	
10023.00†	90.000	88.767	6280.00	3281.77	-334.59	3266.05	3306378.64	1363341.09	40.3255610	-104.4011165	0.00	
10123.00†	90.000	88.767	6280.00	3381.32	-332.43	3366.03	3306478.58	1363344.47	40.3255669	-104.4007580	0.00	
10223.00†	90.000	88.767	6280.00	3480.88	-330.28	3466.01	3306578.52	1363347.85	40.3255727	-104.4003994	0.00	
10323.00†	90.000	88.767	6280.00	3580.43	-328.13	3565.98	3306678.45	1363351.23	40.3255786	-104.4000408	0.00	
10423.00†	90.000	88.767	6280.00	3679.98	-325.98	3665.96	3306778.39	1363354.61	40.3255845	-104.3996823	0.00	
10523.00†	90.000	88.767	6280.00	3779.53	-323.82	3765.94	3306878.33	1363357.98	40.3255903	-104.3993237	0.00	
10623.00†	90.000	88.767	6280.00	3879.09	-321.67	3865.92	3306978.27	1363361.36	40.3255962	-104.3989651	0.00	
10723.00†	90.000	88.767	6280.00	3978.64	-319.52	3965.89	3307078.21	1363364.74	40.3256021	-104.3986066	0.00	
10823.00†	90.000	88.767	6280.00	4078.19	-317.37	4065.87	3307178.15	1363368.12	40.3256079	-104.3982480	0.00	
10923.00†	90.000	88.767	6280.00	4177.74	-315.21	4165.85	3307278.09	1363371.49	40.3256138	-104.3978895	0.00	
11023.00†	90.000	88.767	6280.00	4277.29	-313.06	4265.82	3307378.02	1363374.87	40.3256197	-104.3975309	0.00	
11028.83	90.000	88.767	6280.00‡	4283.10	-312.94	4271.65	3307383.85	1363375.07	40.3256200	-104.3975100	0.00	TD

## HOLE & CASING SECTIONS

- Ref Wellbore: BIGFOOT 11-8-1 PWB      Ref Wellpath: BIGFOOT 11-8-1 PWP Rev-B.0

String/Diameter	Start MD [ft]	End MD [ft]	Interval [ft]	Start TVD [ft]	End TVD [ft]	Start N/S [ft]	Start E/W [ft]	End N/S [ft]	End E/W [ft]
9.625in Casing Surface	23.00	1705.07	1682.07	23.00	1700.00	0.00	0.00	-39.20	-64.71

## TARGETS

Name	MD [ft]	TVD [ft]	North [ft]	East [ft]	Grid East [US ft]	Grid North [US ft]	Latitude	Longitude	Shape
SEC.11-T04N-R63W	N/A	-2.50	0.00	0.00	3303108.87	1363635.60	40.3264800	-104.4128300	polygon
2D Polygon: dimensions not calculated									
SEC.11-T04N-R63W 470' SETBACK	N/A	-2.50	0.00	0.00	3303108.87	1363635.60	40.3264800	-104.4128300	polygon
2D Polygon: dimensions not calculated									
2) BIGFOOT 11-8-1 BHL REV-1 (2050'FSL & 470'FEL,SEC.11)	11028.83	6280.00	-312.94	4271.65	3307383.85	1363375.07	40.3256200	-104.3975100	point

TARGETS									
Name	MD [ft]	TVD [ft]	North [ft]	East [ft]	Grid East [US ft]	Grid North [US ft]	Latitude	Longitude	Shape
1) BIGFOOT 11-8-1 LP REV-1 (2050'FSL & 470'FWL,SEC.11)	6611.16	6280.00	-408.02	-144.99	3302968.90	1363225.85	40.3253600	-104.4133500	point

SURVEY PROGRAM - Ref Wellbore: BIGFOOT 11-8-1 PWB					Ref Wellpath: BIGFOOT 11-8-1 PWP Rev-B.0				
Start MD [ft]	End MD [ft]	Positional Uncertainty Model			Log Name/Comment		Wellbore		
23.00	1705.07	BH NaviTrak (2019) (Axial)					BIGFOOT 11-8-1 PWB		
1705.07	11028.83	BH AutoTrak Curve/eXpress (2019) (Short spacing)					BIGFOOT 11-8-1 PWB		





# Planned Wellpath Report

BIGFOOT 11-8-1 PWP Rev-B.0

Page 6 of 6



## REFERENCE WELLPATH IDENTIFICATION

Operator	CONFLUENCE RESOURCES	Well	BIGFOOT 11-8-1
Field	WELD COUNTY (NAD83, TRUE NORTH)	API/Legal	
Facility	SEC.11-T04N-R63W	Wellbore	BIGFOOT 11-8-1 PWB
Slot	SLOT#01 BIGFOOT 11-8-1(2455'FSL & 620'FWL,SEC.11)		

## DESIGN COMMENTS

MD [ft]	Inclination [°]	Azimuth [°]	TVD [ft]	Comment
23.00	0.000	238.793	23.00	Tie On
1000.00	0.000	238.793	1000.00	End of Tangent
1455.60	9.112	238.793	1453.68	End of Build (J)
1705.07	9.112	238.793	1700.00	End of Tangent (J)
1805.07	9.112	238.793	1798.74	End of Tangent
5795.45	9.112	238.793	5738.77	KOP
6611.16	90.000	88.767	6280.00	LANDING
11028.83	90.000	88.767	6280.00	TD





# Closest Approach Clearance Summary Report

BIGFOOT 11-8-1 PWP Rev-B.0 - SPE WPTS Stop  
Drilling HSE Risk (2017)  
Page 1 of 3



REFERENCE WELLPATH IDENTIFICATION			
Operator	CONFLUENCE RESOURCES	Well	BIGFOOT 11-8-1
Field	WELD COUNTY (NAD83, TRUE NORTH)	API/Legal	
Facility	SEC.11-T04N-R63W	Wellbore	BIGFOOT 11-8-1 PWB
Slot	SLOT#01 BIGFOOT 11-8-1(2455'FSL & 620'FWL,SEC.11)		

REPORT SETUP INFORMATION			
Projection System	NAD83 / Lambert Colorado SP, Northern Zone (501), US feet	Software System	WellArchitect® 6.0
North Reference	True	User	Painsetr
Scale	0.999958	Report Generated	4/26/2022 at 1:23:02 PM
Convergence at slot	0.70° East	Database	WellArchitectDB

WELLPATH LOCATION						
	Local coordinates		Grid coordinates		Geographic coordinates	
	North[ft]	East[ft]	Easting[US ft]	Northing[US ft]	Latitude	Longitude
Slot Location	0.00	0.00	3303108.87	1363635.60	40.3264800°	-104.4128300°
Facility Reference Pt			3303108.87	1363635.60	40.3264800°	-104.4128300°
Field Reference Pt			3230456.90	1245096.09	40.0032400°	-104.6773400°

WELLPATH DATUM			
Calculation method	Minimum Curvature	Rig (23') (KB) to Facility Vertical Datum	4639.00ft
Horizontal Reference Pt	Slot	Rig (23') (KB) to Mean Sea Level	4639.00ft
Vertical Reference Pt	Rig (23') (KB)	Rig (23') (KB) to Ground Level at Slot (SLOT#01 BIGFOOT 11-8-1(2455'FSL & 620'FWL,SEC.11))	23.00ft
MD Reference Pt	Rig (23') (KB)		
Field Vertical Reference	Mean Sea Level		

POSITIONAL UNCERTAINTY CALCULATION SETTINGS					
Ellipse Confidence Limit	3.50 Std Dev	Ellipse Start MD	23.00ft	Surface Position Uncertainty	included
Declination	7.76° East of TN	Dip Angle	66.72°	Mag Field Strength	51850 nT
Slot Surface Uncertainty @1SD		Horizontal	0.100ft	Vertical	1.000ft
Facility Surface Uncertainty @1SD		Horizontal	8.200ft	Vertical	3.000ft
Positional Uncertainty values in the WELLPATH DATA table are the projection of the ellipsoid of uncertainty onto the vertical and horizontal planes					



# Closest Approach Clearance Summary Report

BIGFOOT 11-8-1 PWP Rev-B.0 - SPE WPTS Stop  
Drilling HSE Risk (2017)  
Page 2 of 3



## REFERENCE WELLPATH IDENTIFICATION

Operator	CONFLUENCE RESOURCES	Well	BIGFOOT 11-8-1
Field	WELD COUNTY (NAD83, TRUE NORTH)	API/Legal	
Facility	SEC.11-T04N-R63W	Wellbore	BIGFOOT 11-8-1 PWB
Slot	SLOT#01 BIGFOOT 11-8-1(2455'FSL & 620'FWL,SEC.11)		

## PROXIMITY-SCAN RULE

Rule Name	SPE WPTS Stop Drilling HSE Risk (2017)	Rule Based On	Ratio
Plane of Rule	Closest Approach	Threshold Value	1.00
Include Casing & Hole Size	yes	Apply Cone of Safety	no

## HOLE & CASING SECTIONS

- Ref Wellbore: BIGFOOT 11-8-1 PWB Ref Wellpath: BIGFOOT 11-8-1 PWP Rev-B.0

String/Diameter	Start MD [ft]	End MD [ft]	Interval [ft]	Start TVD [ft]	End TVD [ft]	Start N/S [ft]	Start E/W [ft]	End N/S [ft]	End E/W [ft]
9.625in Casing Surface	23.00	1705.07	1682.07	23.00	1700.00	0.00	0.00	-39.20	-64.71

## SURVEY PROGRAM - Ref Wellbore: BIGFOOT 11-8-1 PWB Ref Wellpath: BIGFOOT 11-8-1 PWP Rev-B.0

Start MD [ft]	End MD [ft]	Positional Uncertainty Model	Log Name/Comment	Wellbore
23.00	1705.07	BH NaviTrak (2019) (Axial)		BIGFOOT 11-8-1 PWB
1705.07	11028.83	BH AutoTrak Curve/eXpress (2019) (Short spacing)		BIGFOOT 11-8-1 PWB



# Closest Approach Clearance Summary Report

BIGFOOT 11-8-1 PWP Rev-B.0 - SPE WPTS Stop  
Drilling HSE Risk (2017)  
Page 3 of 3



## REFERENCE WELLPATH IDENTIFICATION

Operator	CONFLUENCE RESOURCES	Well	BIGFOOT 11-8-1
Field	WELD COUNTY (NAD83, TRUE NORTH)	API/Legal	
Facility	SEC.11-T04N-R63W	Wellbore	BIGFOOT 11-8-1 PWB
Slot	SLOT#01 BIGFOOT 11-8-1(2455'FSL & 620'FWL,SEC.11)		

## CALCULATION RANGE & CUTOFF

From: 23.00ft MD	To: 11028.83ft MD	C-C Cutoff: (none)
------------------	-------------------	--------------------

## OFFSET WELL CLEARANCE SUMMARY (17 Offset Wellpaths selected) Ratios are calculated in Closest Approach plane

Offset Facility	Offset Slot	Offset Well	Offset Wellbore	Offset Wellpath	Wellbore Status	C-C Clearance Distance			Rule Separation Ratio			
						Ref MD [ft]	Min C-C Clear Dist [ft]	Diverging from MD [ft]	Ref MD of Min Ratio [ft]	Min Ratio	Min Ratio Dvrg from [ft]	Rule Status
SEC.11-T04N-R63W	SLOT#20 BIGFOOT 11-7-3 (2281'FSL & 470'FWL,SEC.11)	BIGFOOT 11-7-3	BIGFOOT 11-7-3 PWB	BIGFOOT 11-7-3 PWP Rev-B.0	Planned	3302.18	127.89	11028.83	11028.83	0.88	11028.83	FAIL
SEC.11-T04N-R63W	SLOT#03 BIGFOOT 11-9-2 (2405'FSL & 620'FWL,SEC.11)	BIGFOOT 11-9-2	BIGFOOT 11-9-2 PWB	BIGFOOT 11-9-2 PWP Rev-B.0	Planned	23.00	47.36	10923.00	11028.83	1.06	11028.83	WARN
SEC.11-T04N-R63W	SLOT#02 BIGFOOT 11-4-4 (2430'FSL & 620'FWL,SEC.11)	BIGFOOT 11-4-4	BIGFOOT 11-4-4 PWB	BIGFOOT 11-4-4 PWP Rev-B.0	Planned	23.00	25.50	11023.00	11028.83	1.37	11028.83	PASS
SEC.11-T04N-R63W	SLOT#19 BIGFOOT 11-6-2 (2306'FSL & 470'FWL,SEC.11)	BIGFOOT 11-6-2	BIGFOOT 11-6-2 PWB	BIGFOOT 11-6-2 PWP Rev-B.0	Planned	2386.91	144.34	2386.91	11028.83	1.58	11028.83	PASS
SEC.11-T04N-R63W	SLOT#04 BIGFOOT 11-10-3 (2380'FSL & 620'FWL,SEC.11)	BIGFOOT 11-10-3	BIGFOOT 11-10-3 PWB	BIGFOOT 11-10-3 PWP Rev-B.0	Planned	23.00	72.86	10923.00	11028.83	1.92	11028.83	PASS
SEC.11-T04N-R63W	SLOT#18 BIGFOOT 11-3-4 (2331'FSL & 470'FWL,SEC.11)	BIGFOOT 11-3-4	BIGFOOT 11-3-4 PWB	BIGFOOT 11-3-4 PWP Rev-B.0	Planned	1985.16	148.02	1985.16	11028.83	2.37	11028.83	PASS
SEC.11-T04N-R63W	SLOT#05 BIGFOOT 11-11-1 (2355'FSL & 620'FWL,SEC.11)	BIGFOOT 11-11-1	BIGFOOT 11-11-1 PWB	BIGFOOT 11-11-1 PWP Rev-B.0	Planned	23.00	98.36	10923.00	11028.83	2.64	11028.83	PASS
SEC.11-T04N-R63W	SLOT#17 BIGFOOT 11-5-1 (2356'FSL & 470'FWL,SEC.11)	BIGFOOT 11-5-1	BIGFOOT 11-5-1 PWB	BIGFOOT 11-5-1 PWP Rev-B.0	Planned	1746.21	148.87	1746.21	11028.83	2.65	11028.83	PASS
SEC.11-T04N-R63W	SLOT#06 BIGFOOT 11-5-4 (2330'FSL & 620'FWL,SEC.11)	BIGFOOT 11-5-4	BIGFOOT 11-5-4 PWB	BIGFOOT 11-5-4 PWP Rev-B.0	Planned	23.00	123.86	10923.00	11028.83	3.23	11028.83	PASS
SEC.11-T04N-R63W	SLOT#16 BIGFOOT 11-4-3 (2381'FSL & 470'FWL,SEC.11)	BIGFOOT 11-4-3	BIGFOOT 11-4-3 PWB	BIGFOOT 11-4-3 PWP Rev-B.0	Planned	1485.78	161.09	1485.78	11028.83	3.41	11028.83	PASS
SEC.11-T04N-R63W	SLOT#07 BIGFOOT 11-12-2 (2305'FSL & 620'FWL,SEC.11)	BIGFOOT 11-12-2	BIGFOOT 11-12-2 PWB	BIGFOOT 11-12-2 PWP Rev-B.0	Planned	23.00	149.39	10923.00	11028.83	3.69	11028.83	PASS
SEC.11-T04N-R63W	SLOT#15 BIGFOOT 11-3-2 (2406'FSL & 470'FWL,SEC.11)	BIGFOOT 11-3-2	BIGFOOT 11-3-2 PWB	BIGFOOT 11-3-2 PWP Rev-B.0	Planned	23.00	158.97	1323.00	11028.83	4.19	11028.83	PASS
SEC.11-T04N-R63W	SLOT#08 BIGFOOT 11-13-3 (2280'FSL & 620'FWL,SEC.11)	BIGFOOT 11-13-3	BIGFOOT 11-13-3 PWB	BIGFOOT 11-13-3 PWP Rev-B.0	Planned	23.00	174.89	523.00	11028.83	4.53	11028.83	PASS
SEC.11-T04N-R63W	SLOT#14 BIGFOOT 11-2-4 (2431'FSL & 470'FWL,SEC.11)	BIGFOOT 11-2-4	BIGFOOT 11-2-4 PWB	BIGFOOT 11-2-4 PWP Rev-B.0	Planned	23.00	152.71	623.00	11028.83	4.88	11028.83	PASS
SEC.10-T04N-R63W	SLOT#02 70 RANCH 10-11-2 (2360'FNL & 514'FEL, SEC.10)	70 RANCH 10-11-2	70 RANCH 10-11-2 AWB	70 RANCH 10-11-2 AWP	Drilling	2317.64	1091.41	11028.83	11028.83	5.98	11028.83	PASS

OFFSET WELL CLEARANCE SUMMARY (17 Offset Wellpaths selected) Ratios are calculated in Closest Approach plane												
Offset Facility	Offset Slot	Offset Well	Offset Wellbore	Offset Wellpath	Wellbore Status	C-C Clearance Distance			Rule Separation Ratio			
						Ref MD [ft]	Min C-C Clear Dist [ft]	Diverging from MD [ft]	Ref MD of Min Ratio [ft]	Min Ratio	Min Ratio Dvrg from [ft]	Rule Status
SEC.10-T04N-R63W	SLOT#01 70 RANCH 10-11-1 (2345'FNL & 514'FEL, SEC.10)	70 RANCH 10-11-1	70 RANCH 10-11-1 AWB	70 RANCH 10-11-1 AWP	Drilling	3238.96	1208.12	11028.83	11028.83	7.26	11028.83	PASS
SEC.11-T04N-R63W	SLOT#13 BIGFOOT 11-1-4 (2456'FSL & 470'FWL,SEC.11)	BIGFOOT 11-1-4	BIGFOOT 11-1-4 PWB	BIGFOOT 11-1-4 PWP Rev-B.0	Planned	23.00	150.57	223.00	11028.83	7.71	11028.83	PASS