

CONFLUENCE RESOURCES



Location: COLORADO Slot: SLOT#20 BIGFOOT 11-7-3 (2281°FSL & 470°FWL,SEC.11)  
Field: WELD COUNTY (NAD83, TRUE NORTH) Well: BIGFOOT 11-7-3  
Facility: SEC.11-T04N-R63W Wellbore: BIGFOOT 11-7-3 PWB

Plot reference wellpath is BIGFOOT 11-7-3 PWP Rev8.0  
True vertical depths are referenced to Rig (23) (KB)  
Reference wellpath measured depths are referenced to Rig (23) (KB)  
Rig (23) (KB) to Mean Sea Level: 4639 feet  
Mean Sea Level to Ground level (At Slot: SLOT#20 BIGFOOT 11-7-3 (2281°FSL & 470°FWL,SEC.11)): -4616 feet  
Offset wellpath MDs are referenced to each path's default MD datum  
Created by: painseir on 2022-04-26; Database: WellArchitectDB

Location Information

Facility Name				Grid East (US ft)	Grid North (US ft)	Latitude	Longitude
SEC.11-T04N-R63W				3303108.873	1363635.600	40°19'35.3280"N	104°24'46.1880"W
Slot	Local N (ft)	Local E (ft)		Grid East (US ft)	Grid North (US ft)	Latitude	Longitude
SLOT#20 BIGFOOT 11-7-3 (2281°FSL & 470°FWL,SEC.11)	-174.87	-147.78		3302963.257	1363458.942	40°19'33.6000"N	104°24'48.0960"W
Rig (23) (KB) to Ground level (At Slot: SLOT#20 BIGFOOT 11-7-3 (2281°FSL & 470°FWL,SEC.11))				23ft			
Mean Sea Level to Ground level (At Slot: SLOT#20 BIGFOOT 11-7-3 (2281°FSL & 470°FWL,SEC.11))				-4616ft			
Rig (23) (KB) to Mean Sea Level				4639ft			

Hole and Casing Sections

Name	Start MD (ft)	End MD (ft)	Interval (ft)	Start TVD (ft)	End TVD (ft)	Start Local N (ft)	Start Local E (ft)	End Local N (ft)	End Local E (ft)	Wellbore
9.625in Casing Surface	23.00	1703.59	1680.59	23.00	1700.00	0.00	0.00	5.51	-64.89	BIGFOOT 11-7-3 PWB

Survey Program

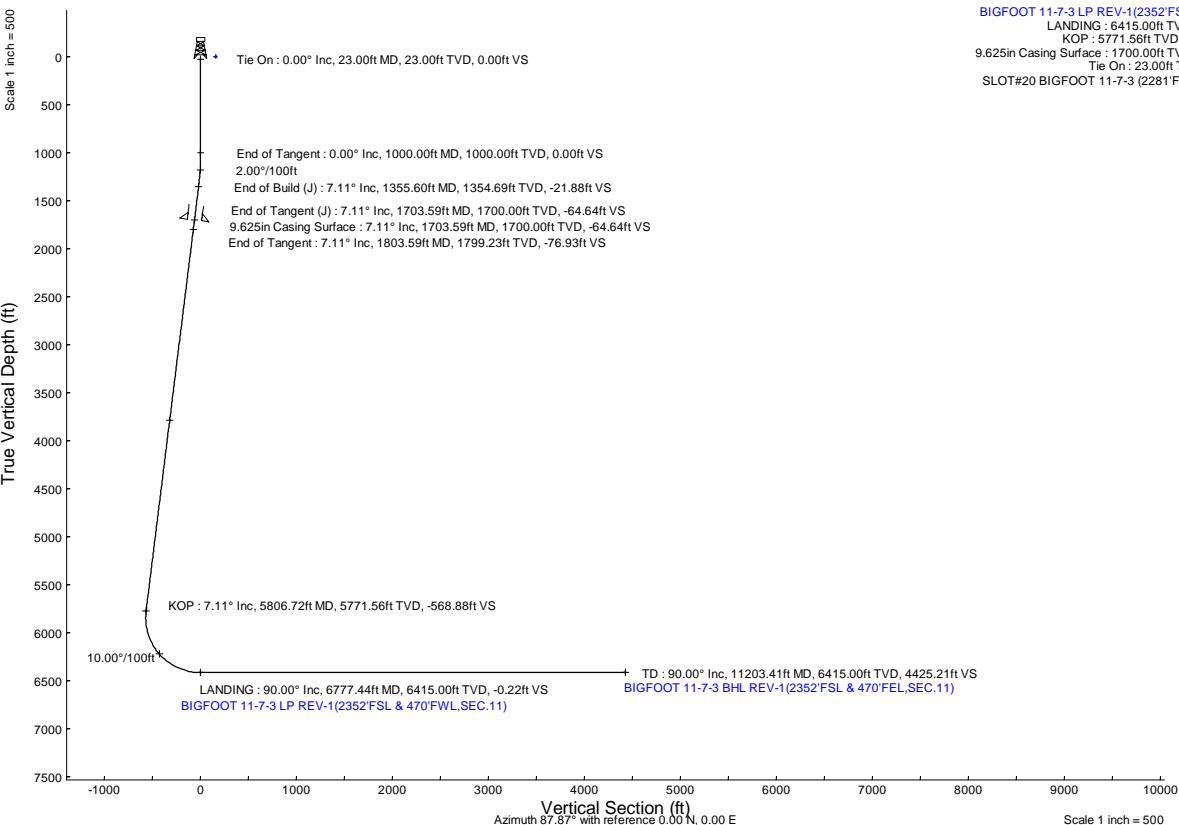
Start MD (ft)	End MD (ft)	Tool	Model	Log Name/Comment	Wellbore
23.00	1703.59	BH NavTrak (2019)	BH NavTrak (2019) (Standard)		BIGFOOT 11-7-3 PWB
1703.59	11203.41	BH AutoTrak Curve/xpress (2019)	BH AutoTrak Curve/xpress (2019) (Short spacing)		BIGFOOT 11-7-3 PWB

Bottom Hole Location

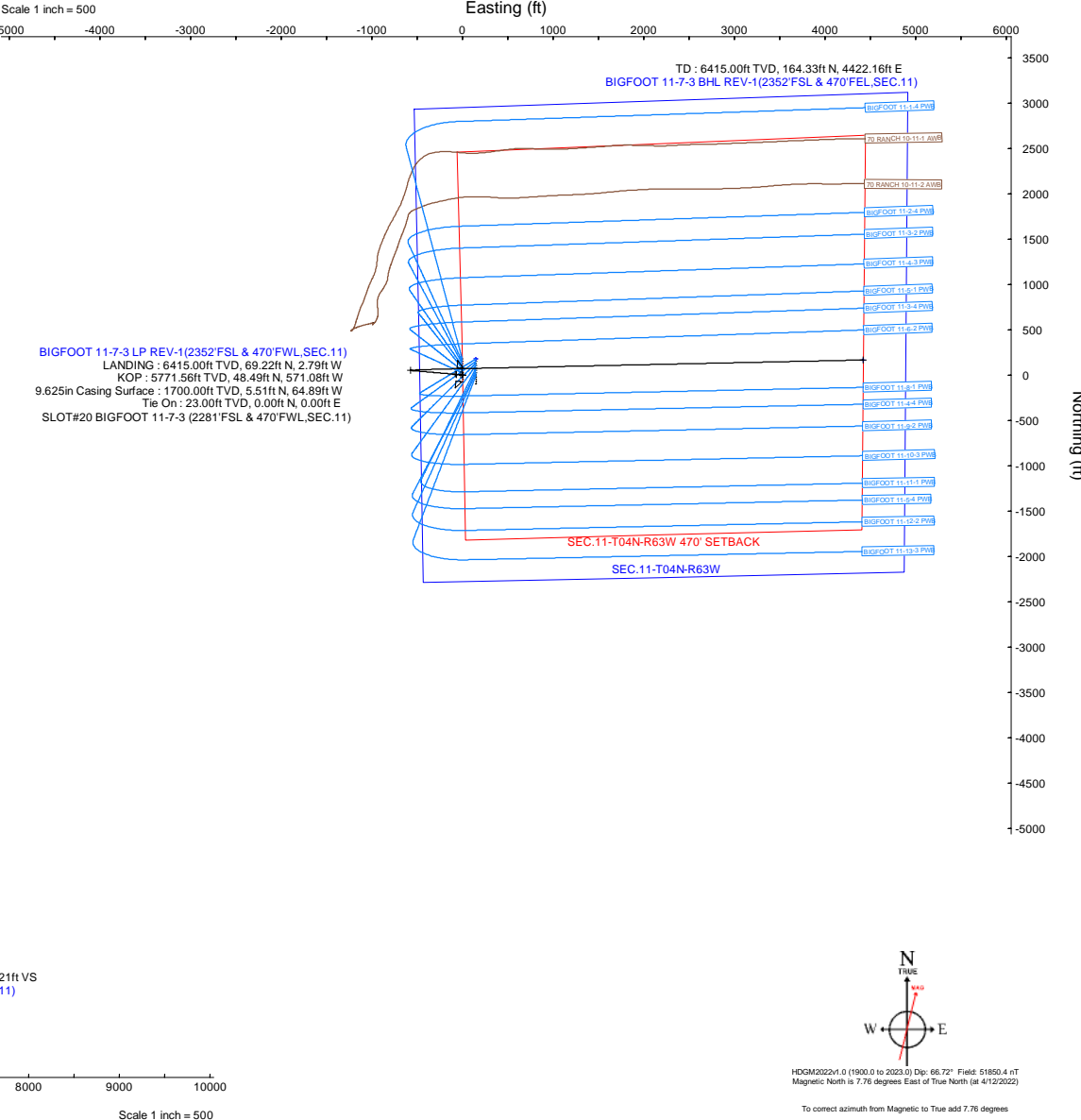
MD (ft)	Inc (°)	Az (°)	TVD (ft)	Local N (ft)	Local E (ft)	Grid East (US ft)	Grid North (US ft)	Latitude	Longitude
11203.41	90.000	88.769	6415.00	164.33	4422.16	3307382.88	1363677.44	40°19'35.2200"N	104°23'51.0000"W

Targets

Name	MD (ft)	TVD (ft)	Local N (ft)	Local E (ft)	Grid East (US ft)	Grid North (US ft)	Latitude	Longitude
SEC.11-T04N-R63W	N/A	-2.50	174.87	147.78	3303108.87	1363635.60	40°19'35.3280"N	104°24'46.1880"W
SEC.11-T04N-R63W 470' SETBACK	N/A	-2.50	174.87	147.78	3303108.87	1363635.60	40°19'35.3280"N	104°24'46.1880"W
BIGFOOT 11-7-3 BHL REV-1(2352°FSL & 470°FEL,SEC.11)	11203.41	6415.00	164.33	4422.16	3307382.88	1363677.44	40°19'35.2200"N	104°23'51.0000"W
BIGFOOT 11-7-3 LP REV-1(2352°FSL & 470°FWL,SEC.11)	6777.44	6415.00	69.22	-2.79	3302959.62	1363528.12	40°19'34.2840"N	104°24'48.1320"W



Well Profile Data								
Design Comment	MD (ft)	Inc (°)	Az (°)	TVD (ft)	Local N (ft)	Local E (ft)	DLS (°/100ft)	VS (ft)
Tie On	23.00	0.000	274.853	23.00	0.00	0.00	0.00	0.00
End of Tangent	1000.00	0.000	274.853	1000.00	0.00	0.00	0.00	0.00
End of Build (J)	1355.60	7.112	274.853	1354.69	1.86	-21.96	2.00	-21.88
End of Tangent (J)	1703.59	7.112	274.853	1700.00	5.51	-64.89	0.00	-64.64
End of Tangent	1803.59	7.112	274.853	1799.23	6.56	-77.23	0.00	-76.93
KOP	5806.72	7.112	274.854	5771.56	48.49	-571.08	0.00	-568.88
LANDING	6777.44	90.000	88.769	6415.00	69.22	-2.79	10.00	-0.22
TD	11203.41	90.000	88.769	6415.00	164.33	4422.16	0.00	4425.21





# Planned Wellpath Report

BIGFOOT 11-7-3 PWP Rev-B.0

Page 1 of 6



## REFERENCE WELLPATH IDENTIFICATION

Operator	CONFLUENCE RESOURCES	Well	BIGFOOT 11-7-3
Field	WELD COUNTY (NAD83, TRUE NORTH)	API/Legal	
Facility	SEC.11-T04N-R63W	Wellbore	BIGFOOT 11-7-3 PWB
Slot	SLOT#20 BIGFOOT 11-7-3 (2281'FSL & 470'FWL,SEC.11)		

## REPORT SETUP INFORMATION

Projection System	NAD83 / Lambert Colorado SP, Northern Zone (501), US feet	Software System	WellArchitect® 6.0
North Reference	True	User	Painsetr
Scale	0.999958	Report Generated	4/26/2022 at 4:01:04 PM
Convergence at slot	0.70° East	Database	WellArchitectDB

## WELLPATH LOCATION

	Local coordinates		Grid coordinates		Geographic coordinates	
	North[ft]	East[ft]	Easting[US ft]	Northing[US ft]	Latitude	Longitude
Slot Location	-174.87	-147.78	3302963.26	1363458.94	40.3260000°	-104.4133600°
Facility Reference Pt			3303108.87	1363635.60	40.3264800°	-104.4128300°
Field Reference Pt			3230456.90	1245096.09	40.0032400°	-104.6773400°

## WELLPATH DATUM

Calculation method	Minimum curvature	Rig (23') (KB) to Facility Vertical Datum	4639.00ft
Horizontal Reference Pt	Slot	Rig (23') (KB) to Mean Sea Level	4639.00ft
Vertical Reference Pt	Rig (23') (KB)	Rig (23') (KB) to Ground Level at Slot (SLOT#20 BIGFOOT 11-7-3 (2281'FSL & 470'FWL,SEC.11))	23.00ft
MD Reference Pt	Rig (23') (KB)	Section Origin	N 0.00, E 0.00 ft
Field Vertical Reference	Mean Sea Level	Section Azimuth	87.87°



# Planned Wellpath Report

BIGFOOT 11-7-3 PWP Rev-B.0

Page 2 of 6



## REFERENCE WELLPATH IDENTIFICATION

Operator	CONFLUENCE RESOURCES	Well	BIGFOOT 11-7-3
Field	WELD COUNTY (NAD83, TRUE NORTH)	API/Legal	
Facility	SEC.11-T04N-R63W	Wellbore	BIGFOOT 11-7-3 PWB
Slot	SLOT#20 BIGFOOT 11-7-3 (2281'FSL & 470'FWL,SEC.11)		

## WELLPATH DATA (120 stations) † = interpolated, ‡ = extrapolated station

MD [ft]	Inclination [°]	Azimuth [°]	TVD [ft]	Vert Sect [ft]	North [ft]	East [ft]	Grid East [US ft]	Grid North [US ft]	Latitude	Longitude	DLS [°/100ft]	Comments
0.00†	0.000	274.853	0.00	0.00	0.00	0.00	3302963.26	1363458.94	40.3260000	-104.4133600	0.00	
23.00	0.000	274.853	23.00	0.00	0.00	0.00	3302963.26	1363458.94	40.3260000	-104.4133600	0.00	Tie On
123.00†	0.000	274.853	123.00	0.00	0.00	0.00	3302963.26	1363458.94	40.3260000	-104.4133600	0.00	
223.00†	0.000	274.853	223.00	0.00	0.00	0.00	3302963.26	1363458.94	40.3260000	-104.4133600	0.00	
323.00†	0.000	274.853	323.00	0.00	0.00	0.00	3302963.26	1363458.94	40.3260000	-104.4133600	0.00	
423.00†	0.000	274.853	423.00	0.00	0.00	0.00	3302963.26	1363458.94	40.3260000	-104.4133600	0.00	
523.00†	0.000	274.853	523.00	0.00	0.00	0.00	3302963.26	1363458.94	40.3260000	-104.4133600	0.00	
623.00†	0.000	274.853	623.00	0.00	0.00	0.00	3302963.26	1363458.94	40.3260000	-104.4133600	0.00	
723.00†	0.000	274.853	723.00	0.00	0.00	0.00	3302963.26	1363458.94	40.3260000	-104.4133600	0.00	
823.00†	0.000	274.853	823.00	0.00	0.00	0.00	3302963.26	1363458.94	40.3260000	-104.4133600	0.00	
923.00†	0.000	274.853	923.00	0.00	0.00	0.00	3302963.26	1363458.94	40.3260000	-104.4133600	0.00	
1000.00	0.000	274.853	1000.00	0.00	0.00	0.00	3302963.26	1363458.94	40.3260000	-104.4133600	0.00	End of Tangent
1023.00†	0.460	274.853	1023.00	-0.09	0.01	-0.09	3302963.16	1363458.95	40.3260000	-104.4133603	2.00	
1123.00†	2.460	274.853	1122.96	-2.62	0.22	-2.63	3302960.62	1363459.13	40.3260006	-104.4133694	2.00	
1223.00†	4.460	274.853	1222.77	-8.61	0.73	-8.64	3302954.60	1363459.57	40.3260020	-104.4133910	2.00	
1323.00†	6.460	274.853	1322.32	-18.05	1.54	-18.12	3302945.12	1363460.26	40.3260042	-104.4134250	2.00	
1355.60	7.112	274.853	1354.69	-21.88	1.86	-21.96	3302941.27	1363460.54	40.3260051	-104.4134388	2.00	End of Build (J)
1423.00†	7.112	274.853	1421.57	-30.16	2.57	-30.28	3302932.95	1363461.14	40.3260071	-104.4134686	0.00	
1523.00†	7.112	274.853	1520.80	-42.45	3.62	-42.61	3302920.60	1363462.04	40.3260099	-104.4135128	0.00	
1623.00†	7.112	274.853	1620.03	-54.74	4.67	-54.95	3302908.26	1363462.93	40.3260128	-104.4135571	0.00	
1703.59	7.112	274.853	1700.00	-64.64	5.51	-64.89	3302898.30	1363463.66	40.3260151	-104.4135927	0.00	End of Tangent (J)
1723.00†	7.112	274.853	1719.26	-67.03	5.71	-67.29	3302895.91	1363463.83	40.3260157	-104.4136013	0.00	
1803.59	7.112	274.853	1799.23	-76.93	6.56	-77.23	3302885.96	1363464.55	40.3260180	-104.4136370	0.00	End of Tangent
1823.00†	7.112	274.853	1818.49	-79.32	6.76	-79.62	3302883.56	1363464.73	40.3260186	-104.4136456	0.00	
1923.00†	7.112	274.853	1917.72	-91.61	7.81	-91.96	3302871.21	1363465.62	40.3260214	-104.4136898	0.00	
2023.00†	7.112	274.853	2016.95	-103.90	8.86	-104.30	3302858.86	1363466.52	40.3260243	-104.4137341	0.00	
2123.00†	7.112	274.853	2116.18	-116.19	9.90	-116.63	3302846.52	1363467.41	40.3260272	-104.4137783	0.00	
2223.00†	7.112	274.853	2215.41	-128.47	10.95	-128.97	3302834.17	1363468.31	40.3260301	-104.4138225	0.00	
2323.00†	7.112	274.853	2314.64	-140.76	12.00	-141.31	3302821.82	1363469.21	40.3260329	-104.4138668	0.00	
2423.00†	7.112	274.853	2413.87	-153.05	13.04	-153.64	3302809.47	1363470.10	40.3260358	-104.4139110	0.00	

# Planned Wellpath Report

BIGFOOT 11-7-3 PWP Rev-B.0

Page 3 of 6

## REFERENCE WELLPATH IDENTIFICATION

Operator	CONFLUENCE RESOURCES	Well	BIGFOOT 11-7-3
Field	WELD COUNTY (NAD83, TRUE NORTH)	API/Legal	
Facility	SEC.11-T04N-R63W	Wellbore	BIGFOOT 11-7-3 PWB
Slot	SLOT#20 BIGFOOT 11-7-3 (2281'FSL & 470'FWL,SEC.11)		

## WELLPATH DATA (120 stations) † = interpolated, ‡ = extrapolated station

MD [ft]	Inclination [°]	Azimuth [°]	TVD [ft]	Vert Sect [ft]	North [ft]	East [ft]	Grid East [US ft]	Grid North [US ft]	Latitude	Longitude	DLS [°/100ft]	Comments
2523.00†	7.112	274.853	2513.11	-165.34	14.09	-165.98	3302797.12	1363471.00	40.3260387	-104.4139553	0.00	
2623.00†	7.112	274.853	2612.34	-177.63	15.14	-178.32	3302784.78	1363471.90	40.3260416	-104.4139995	0.00	
2723.00†	7.112	274.853	2711.57	-189.92	16.19	-190.65	3302772.43	1363472.79	40.3260444	-104.4140438	0.00	
2823.00†	7.112	274.853	2810.80	-202.21	17.23	-202.99	3302760.08	1363473.69	40.3260473	-104.4140880	0.00	
2923.00†	7.112	274.853	2910.03	-214.50	18.28	-215.33	3302747.73	1363474.58	40.3260502	-104.4141323	0.00	
3023.00†	7.112	274.853	3009.26	-226.79	19.33	-227.66	3302735.38	1363475.48	40.3260531	-104.4141765	0.00	
3123.00†	7.112	274.853	3108.49	-239.08	20.38	-240.00	3302723.04	1363476.38	40.3260559	-104.4142207	0.00	
3223.00†	7.112	274.853	3207.72	-251.37	21.42	-252.34	3302710.69	1363477.27	40.3260588	-104.4142650	0.00	
3323.00†	7.112	274.853	3306.95	-263.65	22.47	-264.67	3302698.34	1363478.17	40.3260617	-104.4143092	0.00	
3423.00†	7.112	274.853	3406.18	-275.94	23.52	-277.01	3302685.99	1363479.06	40.3260646	-104.4143535	0.00	
3523.00†	7.112	274.853	3505.41	-288.23	24.57	-289.34	3302673.65	1363479.96	40.3260674	-104.4143977	0.00	
3623.00†	7.112	274.853	3604.64	-300.52	25.61	-301.68	3302661.30	1363480.86	40.3260703	-104.4144420	0.00	
3723.00†	7.112	274.853	3703.87	-312.81	26.66	-314.02	3302648.95	1363481.75	40.3260732	-104.4144862	0.00	
3823.00†	7.112	274.853	3803.10	-325.10	27.71	-326.35	3302636.60	1363482.65	40.3260761	-104.4145305	0.00	
3923.00†	7.112	274.853	3902.33	-337.39	28.76	-338.69	3302624.25	1363483.55	40.3260789	-104.4145747	0.00	
4023.00†	7.112	274.853	4001.56	-349.68	29.80	-351.03	3302611.91	1363484.44	40.3260818	-104.4146189	0.00	
4123.00†	7.112	274.853	4100.80	-361.97	30.85	-363.36	3302599.56	1363485.34	40.3260847	-104.4146632	0.00	
4223.00†	7.112	274.853	4200.03	-374.26	31.90	-375.70	3302587.21	1363486.23	40.3260876	-104.4147074	0.00	
4323.00†	7.112	274.853	4299.26	-386.55	32.95	-388.04	3302574.86	1363487.13	40.3260904	-104.4147517	0.00	
4423.00†	7.112	274.853	4398.49	-398.83	33.99	-400.37	3302562.51	1363488.03	40.3260933	-104.4147959	0.00	
4523.00†	7.112	274.853	4497.72	-411.12	35.04	-412.71	3302550.17	1363488.92	40.3260962	-104.4148402	0.00	
4623.00†	7.112	274.853	4596.95	-423.41	36.09	-425.05	3302537.82	1363489.82	40.3260991	-104.4148844	0.00	
4723.00†	7.112	274.853	4696.18	-435.70	37.14	-437.38	3302525.47	1363490.72	40.3261019	-104.4149287	0.00	
4823.00†	7.112	274.853	4795.41	-447.99	38.18	-449.72	3302513.12	1363491.61	40.3261048	-104.4149729	0.00	
4923.00†	7.112	274.853	4894.64	-460.28	39.23	-462.06	3302500.78	1363492.51	40.3261077	-104.4150171	0.00	
5023.00†	7.112	274.853	4993.87	-472.57	40.28	-474.39	3302488.43	1363493.40	40.3261106	-104.4150614	0.00	
5123.00†	7.112	274.853	5093.10	-484.86	41.33	-486.73	3302476.08	1363494.30	40.3261134	-104.4151056	0.00	
5223.00†	7.112	274.853	5192.33	-497.15	42.37	-499.06	3302463.73	1363495.20	40.3261163	-104.4151499	0.00	
5323.00†	7.112	274.853	5291.56	-509.44	43.42	-511.40	3302451.38	1363496.09	40.3261192	-104.4151941	0.00	
5423.00†	7.112	274.853	5390.79	-521.73	44.47	-523.74	3302439.04	1363496.99	40.3261221	-104.4152384	0.00	



# Planned Wellpath Report

BIGFOOT 11-7-3 PWP Rev-B.0

Page 4 of 6



## REFERENCE WELLPATH IDENTIFICATION

Operator	CONFLUENCE RESOURCES	Well	BIGFOOT 11-7-3
Field	WELD COUNTY (NAD83, TRUE NORTH)	API/Legal	
Facility	SEC.11-T04N-R63W	Wellbore	BIGFOOT 11-7-3 PWB
Slot	SLOT#20 BIGFOOT 11-7-3 (2281'FSL & 470'FWL,SEC.11)		

## WELLPATH DATA (120 stations) † = interpolated, ‡ = extrapolated station

MD [ft]	Inclination [°]	Azimuth [°]	TVD [ft]	Vert Sect [ft]	North [ft]	East [ft]	Grid East [US ft]	Grid North [US ft]	Latitude	Longitude	DLS [°/100ft]	Comments
5523.00†	7.112	274.853	5490.02	-534.01	45.52	-536.07	3302426.69	1363497.88	40.3261249	-104.4152826	0.00	
5623.00†	7.112	274.854	5589.25	-546.30	46.56	-548.41	3302414.34	1363498.78	40.3261278	-104.4153269	0.00	
5723.00†	7.112	274.854	5688.49	-558.59	47.61	-560.75	3302401.99	1363499.68	40.3261307	-104.4153711	0.00	
5806.72	7.112	274.854	5771.56	-568.88	48.49	-571.08	3302391.66	1363500.43	40.3261331	-104.4154081	0.00	KOP
5823.00†	5.496	276.669	5787.74	-570.65	48.66	-572.85	3302389.87	1363500.58	40.3261336	-104.4154145	10.00	
5923.00†	4.619	79.346	5887.60	-571.40	49.97	-573.66	3302389.06	1363501.88	40.3261371	-104.4154174	10.00	
6023.00†	14.576	85.853	5986.08	-554.80	51.63	-557.11	3302405.58	1363503.74	40.3261417	-104.4153580	10.00	
6123.00†	24.567	87.111	6080.19	-521.36	53.59	-523.71	3302438.95	1363506.11	40.3261471	-104.4152383	10.00	
6223.00†	34.564	87.669	6167.05	-472.08	55.80	-474.48	3302488.15	1363508.92	40.3261531	-104.4150617	10.00	
6323.00†	44.561	87.999	6244.05	-408.47	58.18	-410.91	3302551.68	1363512.08	40.3261597	-104.4148337	10.00	
6423.00†	54.560	88.229	6308.83	-332.46	60.67	-334.94	3302627.61	1363515.50	40.3261665	-104.4145613	10.00	
6523.00†	64.559	88.408	6359.43	-246.35	63.19	-248.87	3302713.64	1363519.08	40.3261735	-104.4142526	10.00	
6623.00†	74.558	88.559	6394.31	-152.78	65.67	-155.32	3302807.15	1363522.70	40.3261802	-104.4139171	10.00	
6723.00†	84.557	88.696	6412.42	-54.56	68.02	-57.13	3302905.30	1363526.25	40.3261867	-104.4135649	10.00	
6777.44	90.000	88.769	6415.00†	-0.22	69.22	-2.79	3302959.62	1363528.12	40.3261900	-104.4133700	10.00	LANDING
6823.00†	90.000	88.769	6415.00	45.34	70.20	42.76	3303005.16	1363529.66	40.3261927	-104.4132066	0.00	
6923.00†	90.000	88.769	6415.00	145.33	72.35	142.74	3303105.09	1363533.03	40.3261986	-104.4128481	0.00	
7023.00†	90.000	88.769	6415.00	245.32	74.50	242.72	3303205.03	1363536.40	40.3262045	-104.4124895	0.00	
7123.00†	90.000	88.769	6415.00	345.31	76.64	342.70	3303304.97	1363539.78	40.3262104	-104.4121309	0.00	
7223.00†	90.000	88.769	6415.00	445.29	78.79	442.67	3303404.91	1363543.15	40.3262163	-104.4117724	0.00	
7323.00†	90.000	88.769	6415.00	545.28	80.94	542.65	3303504.85	1363546.52	40.3262222	-104.4114138	0.00	
7423.00†	90.000	88.769	6415.00	645.27	83.09	642.63	3303604.79	1363549.90	40.3262281	-104.4110552	0.00	
7523.00†	90.000	88.769	6415.00	745.26	85.24	742.60	3303704.73	1363553.27	40.3262339	-104.4106967	0.00	
7623.00†	90.000	88.769	6415.00	845.24	87.39	842.58	3303804.66	1363556.65	40.3262398	-104.4103381	0.00	
7723.00†	90.000	88.769	6415.00	945.23	89.54	942.56	3303904.60	1363560.02	40.3262457	-104.4099795	0.00	
7823.00†	90.000	88.769	6415.00	1045.22	91.69	1042.53	3304004.54	1363563.39	40.3262516	-104.4096210	0.00	
7923.00†	90.000	88.769	6415.00	1145.21	93.84	1142.51	3304104.48	1363566.77	40.3262575	-104.4092624	0.00	
8023.00†	90.000	88.769	6415.00	1245.19	95.99	1242.49	3304204.42	1363570.14	40.3262634	-104.4089039	0.00	
8123.00†	90.000	88.769	6415.00	1345.18	98.13	1342.46	3304304.36	1363573.52	40.3262693	-104.4085453	0.00	
8223.00†	90.000	88.769	6415.00	1445.17	100.28	1442.44	3304404.30	1363576.89	40.3262752	-104.4081867	0.00	

## REFERENCE WELLPATH IDENTIFICATION

Operator	CONFLUENCE RESOURCES	Well	BIGFOOT 11-7-3
Field	WELD COUNTY (NAD83, TRUE NORTH)	API/Legal	
Facility	SEC.11-T04N-R63W	Wellbore	BIGFOOT 11-7-3 PWB
Slot	SLOT#20 BIGFOOT 11-7-3 (2281'FSL & 470'FWL,SEC.11)		

## WELLPATH DATA (120 stations) † = interpolated, ‡ = extrapolated station

MD [ft]	Inclination [°]	Azimuth [°]	TVD [ft]	Vert Sect [ft]	North [ft]	East [ft]	Grid East [US ft]	Grid North [US ft]	Latitude	Longitude	DLS [°/100ft]	Comments
8323.00†	90.000	88.769	6415.00	1545.16	102.43	1542.42	3304504.24	1363580.26	40.3262810	-104.4078282	0.00	
8423.00†	90.000	88.769	6415.00	1645.15	104.58	1642.39	3304604.17	1363583.64	40.3262869	-104.4074696	0.00	
8523.00†	90.000	88.769	6415.00	1745.13	106.73	1742.37	3304704.11	1363587.01	40.3262928	-104.4071110	0.00	
8623.00†	90.000	88.769	6415.00	1845.12	108.88	1842.35	3304804.05	1363590.38	40.3262987	-104.4067525	0.00	
8723.00†	90.000	88.769	6415.00	1945.11	111.03	1942.33	3304903.99	1363593.76	40.3263046	-104.4063939	0.00	
8823.00†	90.000	88.769	6415.00	2045.10	113.18	2042.30	3305003.93	1363597.13	40.3263104	-104.4060353	0.00	
8923.00†	90.000	88.769	6415.00	2145.08	115.33	2142.28	3305103.87	1363600.51	40.3263163	-104.4056768	0.00	
9023.00†	90.000	88.769	6415.00	2245.07	117.48	2242.26	3305203.81	1363603.88	40.3263222	-104.4053182	0.00	
9123.00†	90.000	88.769	6415.00	2345.06	119.63	2342.23	3305303.74	1363607.25	40.3263281	-104.4049596	0.00	
9223.00†	90.000	88.769	6415.00	2445.05	121.77	2442.21	3305403.68	1363610.63	40.3263339	-104.4046011	0.00	
9323.00†	90.000	88.769	6415.00	2545.04	123.92	2542.19	3305503.62	1363614.00	40.3263398	-104.4042425	0.00	
9423.00†	90.000	88.769	6415.00	2645.02	126.07	2642.16	3305603.56	1363617.37	40.3263457	-104.4038839	0.00	
9523.00†	90.000	88.769	6415.00	2745.01	128.22	2742.14	3305703.50	1363620.75	40.3263515	-104.4035254	0.00	
9623.00†	90.000	88.769	6415.00	2845.00	130.37	2842.12	3305803.44	1363624.12	40.3263574	-104.4031668	0.00	
9723.00†	90.000	88.769	6415.00	2944.99	132.52	2942.09	3305903.38	1363627.50	40.3263633	-104.4028082	0.00	
9823.00†	90.000	88.769	6415.00	3044.97	134.67	3042.07	3306003.31	1363630.87	40.3263691	-104.4024497	0.00	
9923.00†	90.000	88.769	6415.00	3144.96	136.82	3142.05	3306103.25	1363634.24	40.3263750	-104.4020911	0.00	
10023.00†	90.000	88.769	6415.00	3244.95	138.97	3242.03	3306203.19	1363637.62	40.3263809	-104.4017325	0.00	
10123.00†	90.000	88.769	6415.00	3344.94	141.12	3342.00	3306303.13	1363640.99	40.3263867	-104.4013740	0.00	
10223.00†	90.000	88.769	6415.00	3444.93	143.26	3441.98	3306403.07	1363644.37	40.3263926	-104.4010154	0.00	
10323.00†	90.000	88.769	6415.00	3544.91	145.41	3541.96	3306503.01	1363647.74	40.3263985	-104.4006569	0.00	
10423.00†	90.000	88.769	6415.00	3644.90	147.56	3641.93	3306602.95	1363651.11	40.3264043	-104.4002983	0.00	
10523.00†	90.000	88.769	6415.00	3744.89	149.71	3741.91	3306702.89	1363654.49	40.3264102	-104.3999397	0.00	
10623.00†	90.000	88.769	6415.00	3844.88	151.86	3841.89	3306802.82	1363657.86	40.3264160	-104.3995812	0.00	
10723.00†	90.000	88.769	6415.00	3944.86	154.01	3941.86	3306902.76	1363661.23	40.3264219	-104.3992226	0.00	
10823.00†	90.000	88.769	6415.00	4044.85	156.16	4041.84	3307002.70	1363664.61	40.3264277	-104.3988640	0.00	
10923.00†	90.000	88.769	6415.00	4144.84	158.31	4141.82	3307102.64	1363667.98	40.3264336	-104.3985055	0.00	
11023.00†	90.000	88.769	6415.00	4244.83	160.46	4241.79	3307202.58	1363671.36	40.3264394	-104.3981469	0.00	
11123.00†	90.000	88.769	6415.00	4344.82	162.61	4341.77	3307302.52	1363674.73	40.3264453	-104.3977883	0.00	
11203.41	90.000	88.769	6415.00 <sup>2</sup>	4425.21	164.33	4422.16	3307382.88	1363677.44	40.3264500	-104.3975000	0.00	TD

## HOLE & CASING SECTIONS

- Ref Wellbore: BIGFOOT 11-7-3 PWB      Ref Wellpath: BIGFOOT 11-7-3 PWP Rev-B.0

String/Diameter	Start MD [ft]	End MD [ft]	Interval [ft]	Start TVD [ft]	End TVD [ft]	Start N/S [ft]	Start E/W [ft]	End N/S [ft]	End E/W [ft]
9.625in Casing Surface	23.00	1703.59	1680.59	23.00	1700.00	0.00	0.00	5.51	-64.89

## TARGETS

Name	MD [ft]	TVD [ft]	North [ft]	East [ft]	Grid East [US ft]	Grid North [US ft]	Latitude	Longitude	Shape
SEC.11-T04N-R63W	N/A	-2.50	174.87	147.78	3303108.87	1363635.60	40.3264800	-104.4128300	polygon
2D Polygon: dimensions not calculated									
SEC.11-T04N-R63W 470' SETBACK	N/A	-2.50	174.87	147.78	3303108.87	1363635.60	40.3264800	-104.4128300	polygon
2D Polygon: dimensions not calculated									
	11203.41	6415.00	164.33	4422.16	3307382.88	1363677.44	40.3264500	-104.3975000	point

TARGETS									
Name	MD [ft]	TVD [ft]	North [ft]	East [ft]	Grid East [US ft]	Grid North [US ft]	Latitude	Longitude	Shape
2) BIGFOOT 11-7-3 BHL REV-1 (2352'FSL & 470'FEL,SEC.11)									
1) BIGFOOT 11-7-3 LP REV-1 (2352'FSL & 470'FWL,SEC.11)	6777.44	6415.00	69.22	-2.79	3302959.62	1363528.12	40.3261900	-104.4133700	point

SURVEY PROGRAM - Ref Wellbore: BIGFOOT 11-7-3 PWB					Ref Wellpath: BIGFOOT 11-7-3 PWP Rev-B.0				
Start MD [ft]	End MD [ft]	Positional Uncertainty Model				Log Name/Comment		Wellbore	
23.00	1703.59	BH NaviTrak (2019) (Standard)						BIGFOOT 11-7-3 PWB	
1703.59	11203.41	BH AutoTrak Curve/eXpress (2019) (Short spacing)						BIGFOOT 11-7-3 PWB	



# Planned Wellpath Report

BIGFOOT 11-7-3 PWP Rev-B.0

Page 6 of 6



## REFERENCE WELLPATH IDENTIFICATION

Operator	CONFLUENCE RESOURCES	Well	BIGFOOT 11-7-3
Field	WELD COUNTY (NAD83, TRUE NORTH)	API/Legal	
Facility	SEC.11-T04N-R63W	Wellbore	BIGFOOT 11-7-3 PWB
Slot	SLOT#20 BIGFOOT 11-7-3 (2281'FSL & 470'FWL,SEC.11)		

## DESIGN COMMENTS

MD [ft]	Inclination [°]	Azimuth [°]	TVD [ft]	Comment
23.00	0.000	274.853	23.00	Tie On
1000.00	0.000	274.853	1000.00	End of Tangent
1355.60	7.112	274.853	1354.69	End of Build (J)
1703.59	7.112	274.853	1700.00	End of Tangent (J)
1803.59	7.112	274.853	1799.23	End of Tangent
5806.72	7.112	274.854	5771.56	KOP
6777.44	90.000	88.769	6415.00	LANDING
11203.41	90.000	88.769	6415.00	TD



# Closest Approach Clearance Summary Report

BIGFOOT 11-7-3 PWP Rev-B.0 - SPE WPTS Stop  
Drilling HSE Risk (2017)  
Page 1 of 3



REFERENCE WELLPATH IDENTIFICATION			
Operator	CONFLUENCE RESOURCES	Well	BIGFOOT 11-7-3
Field	WELD COUNTY (NAD83, TRUE NORTH)	API/Legal	
Facility	SEC.11-T04N-R63W	Wellbore	BIGFOOT 11-7-3 PWB
Slot	SLOT#20 BIGFOOT 11-7-3 (2281'FSL & 470'FWL,SEC.11)		

REPORT SETUP INFORMATION			
Projection System	NAD83 / Lambert Colorado SP, Northern Zone (501), US feet	Software System	WellArchitect® 6.0
North Reference	True	User	Painsetr
Scale	0.999958	Report Generated	4/26/2022 at 4:01:08 PM
Convergence at slot	0.70° East	Database	WellArchitectDB

WELLPATH LOCATION						
	Local coordinates		Grid coordinates		Geographic coordinates	
	North[ft]	East[ft]	Easting[US ft]	Northing[US ft]	Latitude	Longitude
Slot Location	-174.87	-147.78	3302963.26	1363458.94	40.3260000°	-104.4133600°
Facility Reference Pt			3303108.87	1363635.60	40.3264800°	-104.4128300°
Field Reference Pt			3230456.90	1245096.09	40.0032400°	-104.6773400°

WELLPATH DATUM			
Calculation method	Minimum Curvature	Rig (23') (KB) to Facility Vertical Datum	4639.00ft
Horizontal Reference Pt	Slot	Rig (23') (KB) to Mean Sea Level	4639.00ft
Vertical Reference Pt	Rig (23') (KB)	Rig (23') (KB) to Ground Level at Slot (SLOT#20 BIGFOOT 11-7-3 (2281'FSL & 470'FWL,SEC.11))	23.00ft
MD Reference Pt	Rig (23') (KB)		
Field Vertical Reference	Mean Sea Level		

POSITIONAL UNCERTAINTY CALCULATION SETTINGS					
Ellipse Confidence Limit	3.50 Std Dev	Ellipse Start MD	23.00ft	Surface Position Uncertainty	included
Declination	7.76° East of TN	Dip Angle	66.72°	Mag Field Strength	51850 nT
Slot Surface Uncertainty @1SD		Horizontal	0.100ft	Vertical	1.000ft
Facility Surface Uncertainty @1SD		Horizontal	8.200ft	Vertical	3.000ft
Positional Uncertainty values in the WELLPATH DATA table are the projection of the ellipsoid of uncertainty onto the vertical and horizontal planes					



# Closest Approach Clearance Summary Report

BIGFOOT 11-7-3 PWP Rev-B.0 - SPE WPTS Stop  
Drilling HSE Risk (2017)  
Page 2 of 3



REFERENCE WELLPATH IDENTIFICATION			
Operator	CONFLUENCE RESOURCES	Well	BIGFOOT 11-7-3
Field	WELD COUNTY (NAD83, TRUE NORTH)	API/Legal	
Facility	SEC.11-T04N-R63W	Wellbore	BIGFOOT 11-7-3 PWB
Slot	SLOT#20 BIGFOOT 11-7-3 (2281'FSL & 470'FWL,SEC.11)		

PROXIMITY-SCAN RULE			
Rule Name	SPE WPTS Stop Drilling HSE Risk (2017)	Rule Based On	Ratio
Plane of Rule	Closest Approach	Threshold Value	1.00
Include Casing & Hole Size	yes	Apply Cone of Safety	no

HOLE & CASING SECTIONS									
- Ref Wellbore: BIGFOOT 11-7-3 PWB      Ref Wellpath: BIGFOOT 11-7-3 PWP Rev-B.0									
String/Diameter	Start MD [ft]	End MD [ft]	Interval [ft]	Start TVD [ft]	End TVD [ft]	Start N/S [ft]	Start E/W [ft]	End N/S [ft]	End E/W [ft]
9.625in Casing Surface	23.00	1703.59	1680.59	23.00	1700.00	0.00	0.00	5.51	-64.89

SURVEY PROGRAM - Ref Wellbore: BIGFOOT 11-7-3 PWB      Ref Wellpath: BIGFOOT 11-7-3 PWP Rev-B.0				
Start MD [ft]	End MD [ft]	Positional Uncertainty Model	Log Name/Comment	Wellbore
23.00	1703.59	BH NaviTrak (2019) (Standard)		BIGFOOT 11-7-3 PWB
1703.59	11203.41	BH AutoTrak Curve/eXpress (2019) (Short spacing)		BIGFOOT 11-7-3 PWB



# Closest Approach Clearance Summary Report

**BIGFOOT 11-7-3 PWP Rev-B.0 - SPE WPTS Stop  
Drilling HSE Risk (2017)**  
Page 3 of 3



REFERENCE WELLPATH IDENTIFICATION			
Operator	CONFLUENCE RESOURCES	Well	BIGFOOT 11-7-3
Field	WELD COUNTY (NAD83, TRUE NORTH)	API/Legal	
Facility	SEC.11-T04N-R63W	Wellbore	BIGFOOT 11-7-3 PWB
Slot	SLOT#20 BIGFOOT 11-7-3 (2281'FSL & 470'FWL,SEC.11)		

CALCULATION RANGE & CUTOFF		
From: 23.00ft MD	To: 11203.41ft MD	C-C Cutoff: (none)

OFFSET WELL CLEARANCE SUMMARY (17 Offset Wellpaths selected) Ratios are calculated in Closest Approach plane												
Offset Facility	Offset Slot	Offset Well	Offset Wellbore	Offset Wellpath	Wellbore Status	C-C Clearance Distance			Rule Separation Ratio			
						Ref MD [ft]	Min C-C Clear Dist [ft]	Diverging from MD [ft]	Ref MD of Min Ratio [ft]	Min Ratio	Min Ratio Dvrg from [ft]	Rule Status
SEC.11-T04N-R63W	SLOT#19 BIGFOOT 11-6-2 (2306'FSL & 470'FWL,SEC.11)	BIGFOOT 11-6-2	BIGFOOT 11-6-2 PWB	BIGFOOT 11-6-2 PWP Rev-B.0	Planned	23.00	21.86	923.00	11203.41	0.85	11203.41	FAIL
SEC.11-T04N-R63W	SLOT#01 BIGFOOT 11-8-1 (2455'FSL & 620'FWL,SEC.11)	BIGFOOT 11-8-1	BIGFOOT 11-8-1 PWB	BIGFOOT 11-8-1 PWP Rev-B.0	Planned	3275.66	127.89	11123.00	11200.78	0.88	11200.78	FAIL
SEC.11-T04N-R63W	SLOT#02 BIGFOOT 11-4-4 (2430'FSL & 620'FWL,SEC.11)	BIGFOOT 11-4-4	BIGFOOT 11-4-4 PWB	BIGFOOT 11-4-4 PWP Rev-B.0	Planned	2669.28	114.66	11123.00	11203.41	1.29	11203.41	PASS
SEC.11-T04N-R63W	SLOT#18 BIGFOOT 11-3-4 (2331'FSL & 470'FWL,SEC.11)	BIGFOOT 11-3-4	BIGFOOT 11-3-4 PWB	BIGFOOT 11-3-4 PWP Rev-B.0	Planned	23.00	47.36	823.00	11203.41	1.48	11203.41	PASS
SEC.11-T04N-R63W	SLOT#03 BIGFOOT 11-9-2 (2405'FSL & 620'FWL,SEC.11)	BIGFOOT 11-9-2	BIGFOOT 11-9-2 PWB	BIGFOOT 11-9-2 PWP Rev-B.0	Planned	2111.90	123.36	11123.00	11203.41	1.81	11203.41	PASS
SEC.11-T04N-R63W	SLOT#17 BIGFOOT 11-5-1 (2356'FSL & 470'FWL,SEC.11)	BIGFOOT 11-5-1	BIGFOOT 11-5-1 PWB	BIGFOOT 11-5-1 PWP Rev-B.0	Planned	23.00	72.91	823.00	11203.41	1.92	11203.41	PASS
SEC.11-T04N-R63W	SLOT#04 BIGFOOT 11-10-3 (2380'FSL & 620'FWL,SEC.11)	BIGFOOT 11-10-3	BIGFOOT 11-10-3 PWB	BIGFOOT 11-10-3 PWP Rev-B.0	Planned	1745.21	136.89	11123.00	11203.41	2.59	11203.41	PASS
SEC.11-T04N-R63W	SLOT#16 BIGFOOT 11-4-3 (2381'FSL & 470'FWL,SEC.11)	BIGFOOT 11-4-3	BIGFOOT 11-4-3 PWB	BIGFOOT 11-4-3 PWP Rev-B.0	Planned	23.00	98.40	723.00	11203.41	2.59	11203.41	PASS
SEC.11-T04N-R63W	SLOT#05 BIGFOOT 11-11-1 (2355'FSL & 620'FWL,SEC.11)	BIGFOOT 11-11-1	BIGFOOT 11-11-1 PWB	BIGFOOT 11-11-1 PWP Rev-B.0	Planned	1344.95	147.18	11123.00	11203.41	3.40	11203.41	PASS
SEC.11-T04N-R63W	SLOT#15 BIGFOOT 11-3-2 (2406'FSL & 470'FWL,SEC.11)	BIGFOOT 11-3-2	BIGFOOT 11-3-2 PWB	BIGFOOT 11-3-2 PWP Rev-B.0	Planned	23.00	123.90	723.00	11203.41	3.40	11203.41	PASS
SEC.11-T04N-R63W	SLOT#06 BIGFOOT 11-5-4 (2330'FSL & 620'FWL,SEC.11)	BIGFOOT 11-5-4	BIGFOOT 11-5-4 PWB	BIGFOOT 11-5-4 PWP Rev-B.0	Planned	1238.22	140.87	11123.00	11203.41	3.83	11203.41	PASS
SEC.11-T04N-R63W	SLOT#14 BIGFOOT 11-2-4 (2431'FSL & 470'FWL,SEC.11)	BIGFOOT 11-2-4	BIGFOOT 11-2-4 PWB	BIGFOOT 11-2-4 PWP Rev-B.0	Planned	23.00	149.39	623.00	11203.41	4.02	11203.41	PASS
SEC.11-T04N-R63W	SLOT#07 BIGFOOT 11-12-2 (2305'FSL & 620'FWL,SEC.11)	BIGFOOT 11-12-2	BIGFOOT 11-12-2 PWB	BIGFOOT 11-12-2 PWP Rev-B.0	Planned	1154.02	137.00	11123.00	11203.41	4.40	11203.41	PASS
SEC.10-T04N-R63W	SLOT#02 70 RANCH 10-11-2 (2360'FNL & 514'FEL, SEC.10)	70 RANCH 10-11-2	70 RANCH 10-11-2 AWB	70 RANCH 10-11-2 AWP	Drilling	2325.34	1017.07	11203.41	11203.41	5.09	11203.41	PASS
SEC.11-T04N-R63W	SLOT#08 BIGFOOT 11-13-3 (2280'FSL & 620'FWL,SEC.11)	BIGFOOT 11-13-3	BIGFOOT 11-13-3 PWB	BIGFOOT 11-13-3 PWP Rev-B.0	Planned	1040.05	141.42	1040.05	11203.41	5.21	11203.41	PASS

OFFSET WELL CLEARANCE SUMMARY (17 Offset Wellpaths selected) Ratios are calculated in Closest Approach plane												
Offset Facility	Offset Slot	Offset Well	Offset Wellbore	Offset Wellpath	Wellbore Status	C-C Clearance Distance			Rule Separation Ratio			
						Ref MD [ft]	Min C-C Clear Dist [ft]	Diverging from MD [ft]	Ref MD of Min Ratio [ft]	Min Ratio	Min Ratio Dvrg from [ft]	Rule Status
SEC.10-T04N-R63W	SLOT#01 70 RANCH 10-11-1 (2345'FNL & 514'FEL, SEC.10)	70 RANCH 10-11-1	70 RANCH 10-11-1 AWB	70 RANCH 10-11-1 AWP	Drilling	3314.58	1092.18	11203.41	11203.41	6.38	11203.41	PASS
SEC.11-T04N-R63W	SLOT#13 BIGFOOT 11-1-4 (2456'FSL & 470'FWL,SEC.11)	BIGFOOT 11-1-4	BIGFOOT 11-1-4 PWB	BIGFOOT 11-1-4 PWP Rev-B.0	Planned	23.00	174.89	223.00	11203.41	6.84	11203.41	PASS