

CONFLUENCE RESOURCES

Location: COLORADO Slot: SLOT#19 BIGFOOT 11-6-2 (2306FSL & 470FWLSEC.11)  
Field: WELD COUNTY (NAD83, TRUE NORTH) Well: BIGFOOT 11-6-2  
Facility: SEC.11-T04N-R63W Wellbore: BIGFOOT 11-6-2 PWB

Plot reference wellpath is BIGFOOT 11-6-2 PWP RevB.0  
True vertical depths are referenced to Rig (23) (KB)  
Reference wellpath measured depths are referenced to Rig (23) (KB)  
Rig (23) (KB) to Mean Sea Level: 4639 feet  
Mean Sea Level to Ground level (At Slot: SLOT#19 BIGFOOT 11-6-2 (2306FSL & 470FWLSEC.11)): -4616 feet  
Offset wellpath MDs are referenced to each path's default MD datum  
Grid System: NAD83 / Lambert Colorado SP, Northern Zone (501), US feet  
North Reference: True north  
Scale: True distance  
Coordinates are in feet referenced to Slot  
Depths are in feet  
Created by: painseir on 2022-04-26; Database: WellArchitectDB

Location Information

| Facility Name   |              |              |  | Grid East (US ft) | Grid North (US ft) | Latitude        | Longitude        |
|---|--------------|--------------|--|-------------------|--------------------|-----------------|------------------|
| SEC.11-T04N-R63W  |              |              |  | 3303108.873       | 1363635.600        | 40°19'35.3280"N | 104°24'46.1880"W |
| Slot  | Local N (ft) | Local E (ft) |  | Grid East (US ft) | Grid North (US ft) | Latitude        | Longitude        |
| SLOT#19 BIGFOOT 11-6-2 (2306FSL & 470FWLSEC.11)   | -153.01      | -147.78      |  | 3302962.989       | 1363480.798        | 40°19'33.8160"N | 104°24'48.0960"W |
| Rig (23) (KB) to Ground level (At Slot: SLOT#19 BIGFOOT 11-6-2 (2306FSL & 470FWLSEC.11))  |              |              |  | 23ft              |                    |                 |                  |
| Mean Sea Level to Ground level (At Slot: SLOT#19 BIGFOOT 11-6-2 (2306FSL & 470FWLSEC.11)) |              |              |  | -4616ft           |                    |                 |                  |
| Rig (23) (KB) to Mean Sea Level   |              |              |  | 4639ft            |                    |                 |                  |

Hole and Casing Sections

| Name                   | Start MD (ft) | End MD (ft) | Interval (ft) | Start TVD (ft) | End TVD (ft) | Start Local N (ft) | Start Local E (ft) | End Local N (ft) | End Local E (ft) | Wellbore           |
|------------------------|---------------|-------------|---------------|----------------|--------------|--------------------|--------------------|------------------|------------------|--------------------|
| 9.625in Casing Surface | 23.00         | 1704.64     | 1681.64       | 23.00          | 1700.00      | 0.00               | 0.00               | 31.75            | -69.57           | BIGFOOT 11-6-2 PWB |

Survey Program

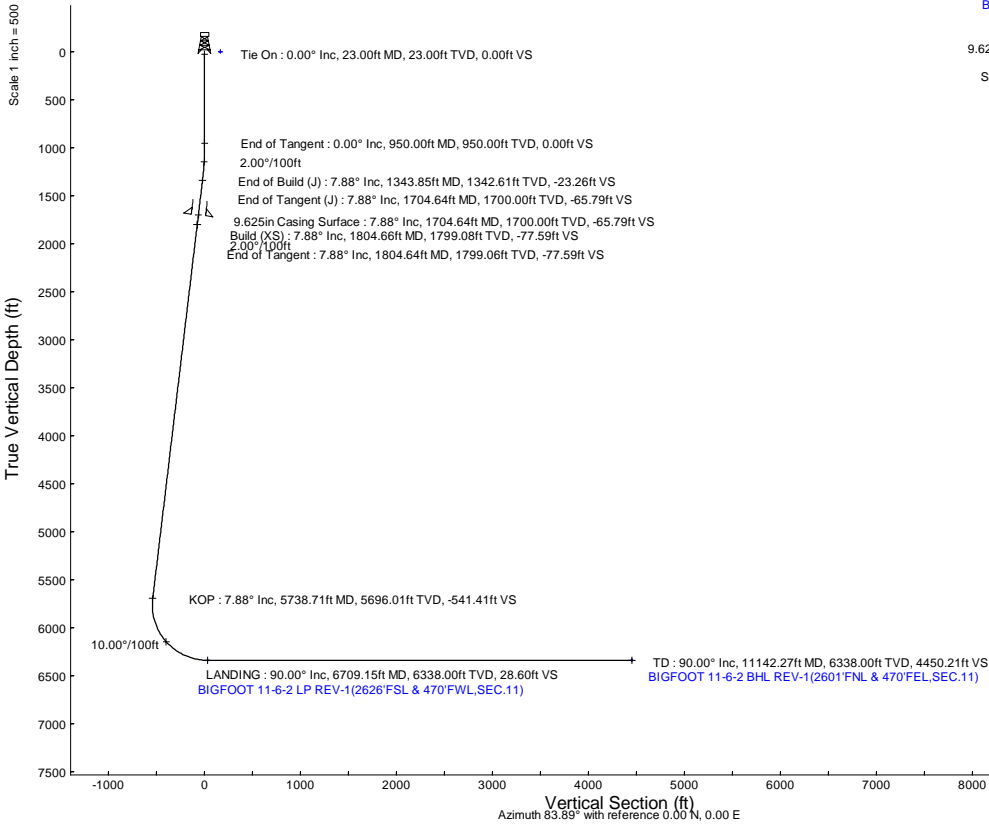
| Start MD (ft) | End MD (ft) | Tool                             | Model  | Log Name/Comment | Wellbore           |
|---------------|-------------|----------------------------------|--|------------------|--------------------|
| 23.00         | 1704.64     | BH NavTrak (2019)                | BH NavTrak (2019) (Standard)                     |                  | BIGFOOT 11-6-2 PWB |
| 1704.64       | 11142.27    | BH AutoTrak Curve/Express (2019) | BH AutoTrak Curve/Express (2019) (Short spacing) |                  | BIGFOOT 11-6-2 PWB |

Bottom Hole Location

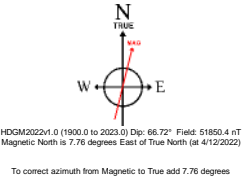
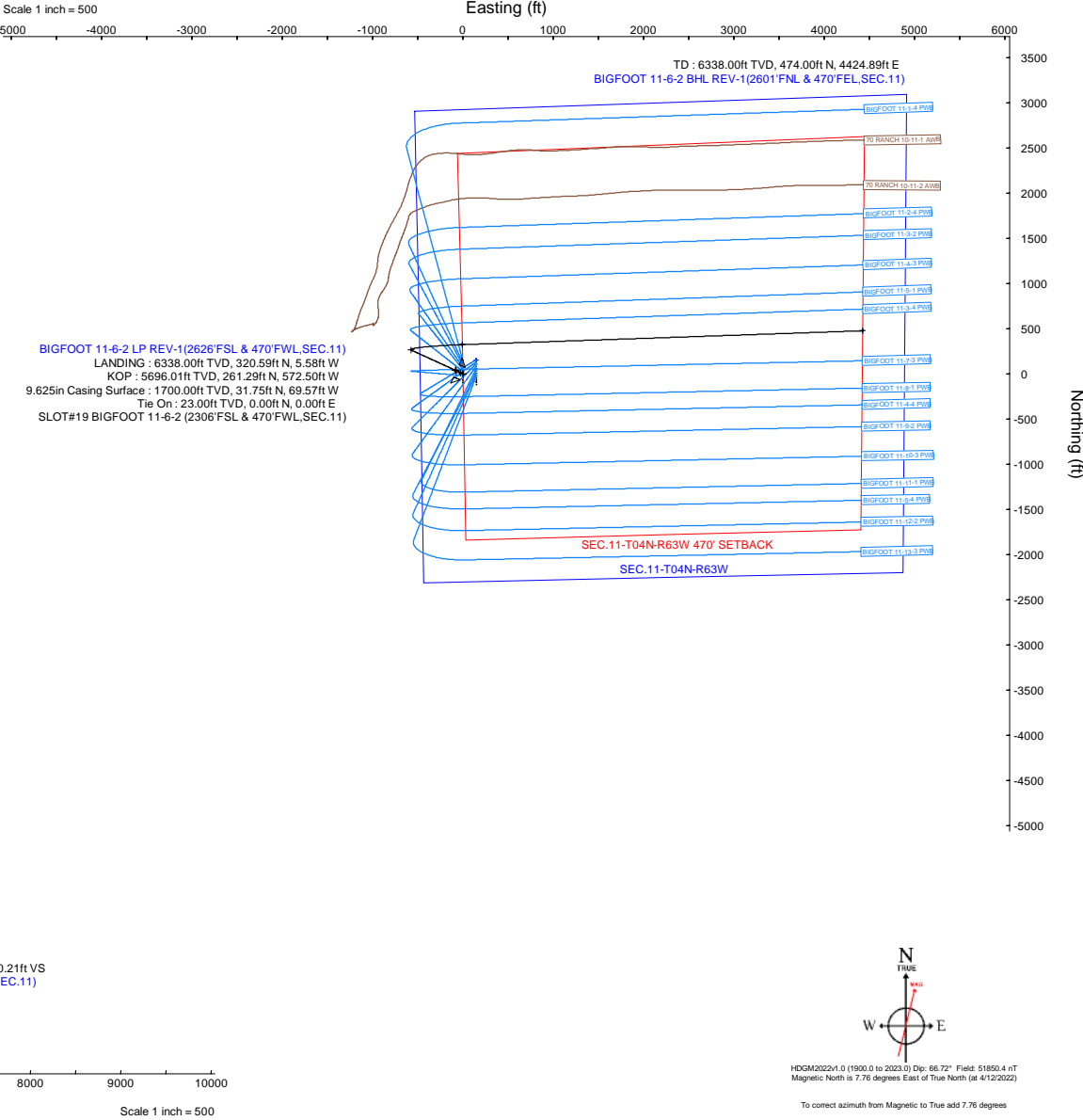
| MD (ft)  | Inc (°) | Az (°) | TVD (ft) | Local N (ft) | Local E (ft) | Grid East (US ft) | Grid North (US ft) | Latitude        | Longitude        |
|----------|---------|--------|----------|--------------|--------------|-------------------|--------------------|-----------------|------------------|
| 11142.27 | 90.000  | 88.017 | 6338.00  | 474.00       | 4424.89      | 3307381.54        | 1364008.96         | 40°19'38.4960"N | 104°23'50.9640"W |

Targets

| Name   | MD (ft)  | TVD (ft) | Local N (ft) | Local E (ft) | Grid East (US ft) | Grid North (US ft) | Latitude        | Longitude        |
|--|----------|----------|--------------|--------------|-------------------|--------------------|-----------------|------------------|
| SEC.11-T04N-R63W                                 |          |          |              |              |                   |                    |                 |                  |
| SEC.11-T04N-R63W 470' SETBACK                    | N/A      | -2.50    | 153.01       | 147.78       | 3303108.87        | 1363635.60         | 40°19'35.3280"N | 104°24'46.1880"W |
| BIGFOOT 11-6-2 BHL REV-1(2601FNL & 470FELSEC.11) | 11142.27 | 6338.00  | 474.00       | 4424.89      | 3307381.54        | 1364008.96         | 40°19'38.4960"N | 104°23'50.9640"W |
| BIGFOOT 11-6-2 LP REV-1(2626FSL & 470FWLSEC.11)  | 6709.15  | 6338.00  | 320.59       | -5.58        | 3302953.48        | 1363801.28         | 40°19'36.9840"N | 104°24'48.1680"W |



| Well Profile Data  |          |         |         |          |              |              |               |         |
|--------------------|----------|---------|---------|----------|--------------|--------------|---------------|---------|
| Design Comment     | MD (ft)  | Inc (°) | Az (°)  | TVD (ft) | Local N (ft) | Local E (ft) | DLS (°/100ft) | VS (ft) |
| Tie On             | 23.00    | 0.000   | 294.532 | 23.00    | 0.00         | 0.00         | 0.00          | 0.00    |
| End of Tangent     | 950.00   | 0.000   | 294.532 | 950.00   | 0.00         | 0.00         | 0.00          | 0.00    |
| End of Build (J)   | 1343.85  | 7.877   | 294.532 | 1342.61  | 11.22        | -24.59       | 2.00          | -23.26  |
| End of Tangent (J) | 1704.64  | 7.877   | 294.532 | 1700.00  | 31.75        | -69.57       | 0.00          | -65.79  |
| End of Tangent     | 1804.64  | 7.877   | 294.532 | 1799.06  | 37.44        | -82.04       | 0.00          | -77.59  |
| Build (XS)         | 1804.66  | 7.877   | 294.532 | 1799.08  | 37.44        | -82.04       | 2.00          | -77.59  |
| KOP                | 5738.71  | 7.877   | 294.532 | 5696.01  | 261.29       | -572.50      | 0.00          | -541.41 |
| LANDING            | 6709.15  | 90.000  | 88.017  | 6338.00  | 320.59       | -5.58        | 10.00         | 28.60   |
| TD                 | 11142.27 | 90.000  | 88.017  | 6338.00  | 474.00       | 4424.89      | 0.00          | 4450.21 |





# Planned Wellpath Report

BIGFOOT 11-6-2 PWP Rev-B.0

Page 1 of 8



## REFERENCE WELLPATH IDENTIFICATION

|          |  |           |                    |
|----------|--|-----------|--------------------|
| Operator | CONFLUENCE RESOURCES                               | Well      | BIGFOOT 11-6-2     |
| Field    | WELD COUNTY (NAD83, TRUE NORTH)                    | API/Legal |                    |
| Facility | SEC.11-T04N-R63W                                   | Wellbore  | BIGFOOT 11-6-2 PWB |
| Slot     | SLOT#19 BIGFOOT 11-6-2 (2306'FSL & 470'FWL,SEC.11) |           |                    |

## REPORT SETUP INFORMATION

|                     |   |                  |                         |
|---------------------|---|------------------|-------------------------|
| Projection System   | NAD83 / Lambert Colorado SP, Northern Zone (501), US feet | Software System  | WellArchitect® 6.0      |
| North Reference     | True  | User             | Painsetr                |
| Scale               | 0.999958  | Report Generated | 4/26/2022 at 3:57:08 PM |
| Convergence at slot | 0.70° East  | Database         | WellArchitectDB         |

## WELLPATH LOCATION

|                       | Local coordinates |          | Grid coordinates |                 | Geographic coordinates |               |
|-----------------------|-------------------|----------|------------------|-----------------|------------------------|---------------|
|                       | North[ft]         | East[ft] | Easting[US ft]   | Northing[US ft] | Latitude               | Longitude     |
| Slot Location         | -153.01           | -147.78  | 3302962.99       | 1363480.80      | 40.3260600°            | -104.4133600° |
| Facility Reference Pt |                   |          | 3303108.87       | 1363635.60      | 40.3264800°            | -104.4128300° |
| Field Reference Pt    |                   |          | 3230456.90       | 1245096.09      | 40.0032400°            | -104.6773400° |

## WELLPATH DATUM

|                          |                   |   |                   |
|--------------------------|-------------------|---|-------------------|
| Calculation method       | Minimum curvature | Rig (23') (KB) to Facility Vertical Datum   | 4639.00ft         |
| Horizontal Reference Pt  | Slot              | Rig (23') (KB) to Mean Sea Level  | 4639.00ft         |
| Vertical Reference Pt    | Rig (23') (KB)    | Rig (23') (KB) to Ground Level at Slot (SLOT#19 BIGFOOT 11-6-2 (2306'FSL & 470'FWL,SEC.11)) | 23.00ft           |
| MD Reference Pt          | Rig (23') (KB)    | Section Origin  | N 0.00, E 0.00 ft |
| Field Vertical Reference | Mean Sea Level    | Section Azimuth   | 83.89°            |



# Planned Wellpath Report

BIGFOOT 11-6-2 PWP Rev-B.0

Page 2 of 8



## REFERENCE WELLPATH IDENTIFICATION

|          |  |           |                    |
|----------|--|-----------|--------------------|
| Operator | CONFLUENCE RESOURCES                               | Well      | BIGFOOT 11-6-2     |
| Field    | WELD COUNTY (NAD83, TRUE NORTH)                    | API/Legal |                    |
| Facility | SEC.11-T04N-R63W                                   | Wellbore  | BIGFOOT 11-6-2 PWB |
| Slot     | SLOT#19 BIGFOOT 11-6-2 (2306'FSL & 470'FWL,SEC.11) |           |                    |

## WELLPATH DATA (121 stations) † = interpolated, ‡ = extrapolated station

| MD<br>[ft] | Inclination<br>[°] | Azimuth<br>[°] | TVD<br>[ft] | Vert<br>Sect<br>[ft] | North<br>[ft] | East<br>[ft] | Grid East<br>[US ft] | Grid North<br>[US ft] | Latitude   | Longitude    | DLS<br>[°/100ft] | Comments           |
|------------|--------------------|----------------|-------------|----------------------|---------------|--------------|----------------------|-----------------------|------------|--------------|------------------|--------------------|
| 0.00†      | 0.000              | 294.532        | 0.00        | 0.00                 | 0.00          | 0.00         | 3302962.99           | 1363480.80            | 40.3260600 | -104.4133600 | 0.00             |                    |
| 23.00      | 0.000              | 294.532        | 23.00       | 0.00                 | 0.00          | 0.00         | 3302962.99           | 1363480.80            | 40.3260600 | -104.4133600 | 0.00             | Tie On             |
| 123.00†    | 0.000              | 294.532        | 123.00      | 0.00                 | 0.00          | 0.00         | 3302962.99           | 1363480.80            | 40.3260600 | -104.4133600 | 0.00             |                    |
| 223.00†    | 0.000              | 294.532        | 223.00      | 0.00                 | 0.00          | 0.00         | 3302962.99           | 1363480.80            | 40.3260600 | -104.4133600 | 0.00             |                    |
| 323.00†    | 0.000              | 294.532        | 323.00      | 0.00                 | 0.00          | 0.00         | 3302962.99           | 1363480.80            | 40.3260600 | -104.4133600 | 0.00             |                    |
| 423.00†    | 0.000              | 294.532        | 423.00      | 0.00                 | 0.00          | 0.00         | 3302962.99           | 1363480.80            | 40.3260600 | -104.4133600 | 0.00             |                    |
| 523.00†    | 0.000              | 294.532        | 523.00      | 0.00                 | 0.00          | 0.00         | 3302962.99           | 1363480.80            | 40.3260600 | -104.4133600 | 0.00             |                    |
| 623.00†    | 0.000              | 294.532        | 623.00      | 0.00                 | 0.00          | 0.00         | 3302962.99           | 1363480.80            | 40.3260600 | -104.4133600 | 0.00             |                    |
| 723.00†    | 0.000              | 294.532        | 723.00      | 0.00                 | 0.00          | 0.00         | 3302962.99           | 1363480.80            | 40.3260600 | -104.4133600 | 0.00             |                    |
| 823.00†    | 0.000              | 294.532        | 823.00      | 0.00                 | 0.00          | 0.00         | 3302962.99           | 1363480.80            | 40.3260600 | -104.4133600 | 0.00             |                    |
| 923.00†    | 0.000              | 294.532        | 923.00      | 0.00                 | 0.00          | 0.00         | 3302962.99           | 1363480.80            | 40.3260600 | -104.4133600 | 0.00             |                    |
| 950.00     | 0.000              | 294.532        | 950.00      | 0.00                 | 0.00          | 0.00         | 3302962.99           | 1363480.80            | 40.3260600 | -104.4133600 | 0.00             | End of Tangent     |
| 1023.00†   | 1.460              | 294.532        | 1022.99     | -0.80                | 0.39          | -0.85        | 3302962.14           | 1363481.17            | 40.3260611 | -104.4133630 | 2.00             |                    |
| 1123.00†   | 3.460              | 294.532        | 1122.89     | -4.49                | 2.17          | -4.75        | 3302958.21           | 1363482.91            | 40.3260660 | -104.4133770 | 2.00             |                    |
| 1223.00†   | 5.460              | 294.532        | 1222.59     | -11.18               | 5.40          | -11.82       | 3302951.10           | 1363486.05            | 40.3260748 | -104.4134024 | 2.00             |                    |
| 1323.00†   | 7.460              | 294.532        | 1321.95     | -20.86               | 10.07         | -22.06       | 3302940.81           | 1363490.59            | 40.3260876 | -104.4134391 | 2.00             |                    |
| 1343.85    | 7.877              | 294.532        | 1342.61     | -23.26               | 11.22         | -24.59       | 3302938.26           | 1363491.72            | 40.3260908 | -104.4134482 | 2.00             | End of Build (J)   |
| 1423.00†   | 7.877              | 294.532        | 1421.01     | -32.59               | 15.73         | -34.46       | 3302928.34           | 1363496.10            | 40.3261032 | -104.4134836 | 0.00             |                    |
| 1523.00†   | 7.877              | 294.532        | 1520.07     | -44.38               | 21.42         | -46.93       | 3302915.81           | 1363501.64            | 40.3261188 | -104.4135283 | 0.00             |                    |
| 1623.00†   | 7.877              | 294.532        | 1619.13     | -56.17               | 27.11         | -59.39       | 3302903.27           | 1363507.17            | 40.3261344 | -104.4135730 | 0.00             |                    |
| 1704.64    | 7.877              | 294.532        | 1700.00     | -65.79               | 31.75         | -69.57       | 3302893.04           | 1363511.69            | 40.3261472 | -104.4136095 | 0.00             | End of Tangent (J) |
| 1723.00†   | 7.877              | 294.532        | 1718.18     | -67.96               | 32.80         | -71.86       | 3302890.73           | 1363512.71            | 40.3261500 | -104.4136177 | 0.00             |                    |
| 1804.64    | 7.877              | 294.532        | 1799.06     | -77.59               | 37.44         | -82.04       | 3302880.50           | 1363517.23            | 40.3261628 | -104.4136542 | 0.00             | End of Tangent     |
| 1804.66    | 7.877              | 294.532        | 1799.08     | -77.59               | 37.44         | -82.04       | 3302880.50           | 1363517.23            | 40.3261628 | -104.4136542 | 2.00             | Build (XS)         |
| 1823.00†   | 7.877              | 294.532        | 1817.24     | -79.75               | 38.49         | -84.33       | 3302878.20           | 1363518.25            | 40.3261656 | -104.4136624 | 0.00             |                    |
| 1923.00†   | 7.877              | 294.532        | 1916.30     | -91.54               | 44.18         | -96.80       | 3302865.66           | 1363523.78            | 40.3261813 | -104.4137072 | 0.00             |                    |
| 2023.00†   | 7.877              | 294.532        | 2015.35     | -103.33              | 49.87         | -109.26      | 3302853.13           | 1363529.32            | 40.3261969 | -104.4137519 | 0.00             |                    |
| 2123.00†   | 7.877              | 294.532        | 2114.41     | -115.12              | 55.56         | -121.73      | 3302840.59           | 1363534.86            | 40.3262125 | -104.4137966 | 0.00             |                    |
| 2223.00†   | 7.877              | 294.532        | 2213.47     | -126.91              | 61.25         | -134.20      | 3302828.06           | 1363540.39            | 40.3262281 | -104.4138413 | 0.00             |                    |
| 2323.00†   | 7.877              | 294.532        | 2312.52     | -138.70              | 66.94         | -146.66      | 3302815.52           | 1363545.93            | 40.3262437 | -104.4138860 | 0.00             |                    |

# Planned Wellpath Report

BIGFOOT 11-6-2 PWP Rev-B.0

Page 3 of 8

## REFERENCE WELLPATH IDENTIFICATION

|          |  |           |                    |
|----------|--|-----------|--------------------|
| Operator | CONFLUENCE RESOURCES                               | Well      | BIGFOOT 11-6-2     |
| Field    | WELD COUNTY (NAD83, TRUE NORTH)                    | API/Legal |                    |
| Facility | SEC.11-T04N-R63W                                   | Wellbore  | BIGFOOT 11-6-2 PWB |
| Slot     | SLOT#19 BIGFOOT 11-6-2 (2306'FSL & 470'FWL,SEC.11) |           |                    |

## WELLPATH DATA (121 stations) † = interpolated, ‡ = extrapolated station

| MD<br>[ft] | Inclination<br>[°] | Azimuth<br>[°] | TVD<br>[ft] | Vert Sect<br>[ft] | North<br>[ft] | East<br>[ft] | Grid East<br>[US ft] | Grid North<br>[US ft] | Latitude   | Longitude    | DLS<br>[°/100ft] | Comments |
|------------|--------------------|----------------|-------------|-------------------|---------------|--------------|----------------------|-----------------------|------------|--------------|------------------|----------|
| 2423.00†   | 7.877              | 294.532        | 2411.58     | -150.49           | 72.63         | -159.13      | 3302802.99           | 1363551.47            | 40.3262594 | -104.4139307 | 0.00             |          |
| 2523.00†   | 7.877              | 294.532        | 2510.64     | -162.28           | 78.32         | -171.60      | 3302790.45           | 1363557.00            | 40.3262750 | -104.4139754 | 0.00             |          |
| 2623.00†   | 7.877              | 294.532        | 2609.69     | -174.07           | 84.01         | -184.06      | 3302777.92           | 1363562.54            | 40.3262906 | -104.4140201 | 0.00             |          |
| 2723.00†   | 7.877              | 294.532        | 2708.75     | -185.86           | 89.70         | -196.53      | 3302765.38           | 1363568.08            | 40.3263062 | -104.4140649 | 0.00             |          |
| 2823.00†   | 7.877              | 294.532        | 2807.81     | -197.65           | 95.39         | -209.00      | 3302752.85           | 1363573.61            | 40.3263218 | -104.4141096 | 0.00             |          |
| 2923.00†   | 7.877              | 294.532        | 2906.86     | -209.44           | 101.08        | -221.46      | 3302740.31           | 1363579.15            | 40.3263374 | -104.4141543 | 0.00             |          |
| 3023.00†   | 7.877              | 294.532        | 3005.92     | -221.23           | 106.77        | -233.93      | 3302727.78           | 1363584.69            | 40.3263531 | -104.4141990 | 0.00             |          |
| 3123.00†   | 7.877              | 294.532        | 3104.97     | -233.02           | 112.46        | -246.40      | 3302715.24           | 1363590.22            | 40.3263687 | -104.4142437 | 0.00             |          |
| 3223.00†   | 7.877              | 294.532        | 3204.03     | -244.81           | 118.15        | -258.87      | 3302702.71           | 1363595.76            | 40.3263843 | -104.4142884 | 0.00             |          |
| 3323.00†   | 7.877              | 294.532        | 3303.09     | -256.60           | 123.84        | -271.33      | 3302690.17           | 1363601.29            | 40.3263999 | -104.4143331 | 0.00             |          |
| 3423.00†   | 7.877              | 294.532        | 3402.14     | -268.39           | 129.53        | -283.80      | 3302677.64           | 1363606.83            | 40.3264155 | -104.4143778 | 0.00             |          |
| 3523.00†   | 7.877              | 294.532        | 3501.20     | -280.18           | 135.22        | -296.27      | 3302665.10           | 1363612.37            | 40.3264312 | -104.4144226 | 0.00             |          |
| 3623.00†   | 7.877              | 294.532        | 3600.26     | -291.97           | 140.91        | -308.73      | 3302652.57           | 1363617.90            | 40.3264468 | -104.4144673 | 0.00             |          |
| 3723.00†   | 7.877              | 294.532        | 3699.31     | -303.76           | 146.60        | -321.20      | 3302640.03           | 1363623.44            | 40.3264624 | -104.4145120 | 0.00             |          |
| 3823.00†   | 7.877              | 294.532        | 3798.37     | -315.55           | 152.29        | -333.67      | 3302627.50           | 1363628.98            | 40.3264780 | -104.4145567 | 0.00             |          |
| 3923.00†   | 7.877              | 294.532        | 3897.43     | -327.34           | 157.98        | -346.13      | 3302614.96           | 1363634.51            | 40.3264936 | -104.4146014 | 0.00             |          |
| 4023.00†   | 7.877              | 294.532        | 3996.48     | -339.13           | 163.66        | -358.60      | 3302602.42           | 1363640.05            | 40.3265092 | -104.4146461 | 0.00             |          |
| 4123.00†   | 7.877              | 294.532        | 4095.54     | -350.92           | 169.35        | -371.07      | 3302589.89           | 1363645.59            | 40.3265249 | -104.4146908 | 0.00             |          |
| 4223.00†   | 7.877              | 294.532        | 4194.60     | -362.71           | 175.04        | -383.54      | 3302577.35           | 1363651.12            | 40.3265405 | -104.4147355 | 0.00             |          |
| 4323.00†   | 7.877              | 294.532        | 4293.65     | -374.50           | 180.73        | -396.00      | 3302564.82           | 1363656.66            | 40.3265561 | -104.4147803 | 0.00             |          |
| 4423.00†   | 7.877              | 294.532        | 4392.71     | -386.29           | 186.42        | -408.47      | 3302552.28           | 1363662.20            | 40.3265717 | -104.4148250 | 0.00             |          |
| 4523.00†   | 7.877              | 294.532        | 4491.77     | -398.08           | 192.11        | -420.94      | 3302539.75           | 1363667.73            | 40.3265873 | -104.4148697 | 0.00             |          |
| 4623.00†   | 7.877              | 294.532        | 4590.82     | -409.87           | 197.80        | -433.40      | 3302527.21           | 1363673.27            | 40.3266029 | -104.4149144 | 0.00             |          |
| 4723.00†   | 7.877              | 294.532        | 4689.88     | -421.66           | 203.49        | -445.87      | 3302514.68           | 1363678.80            | 40.3266186 | -104.4149591 | 0.00             |          |
| 4823.00†   | 7.877              | 294.532        | 4788.94     | -433.45           | 209.18        | -458.34      | 3302502.14           | 1363684.34            | 40.3266342 | -104.4150038 | 0.00             |          |
| 4923.00†   | 7.877              | 294.532        | 4887.99     | -445.24           | 214.87        | -470.80      | 3302489.61           | 1363689.88            | 40.3266498 | -104.4150485 | 0.00             |          |
| 5023.00†   | 7.877              | 294.532        | 4987.05     | -457.03           | 220.56        | -483.27      | 3302477.07           | 1363695.41            | 40.3266654 | -104.4150932 | 0.00             |          |
| 5123.00†   | 7.877              | 294.532        | 5086.11     | -468.82           | 226.25        | -495.74      | 3302464.54           | 1363700.95            | 40.3266810 | -104.4151380 | 0.00             |          |
| 5223.00†   | 7.877              | 294.532        | 5185.16     | -480.61           | 231.94        | -508.20      | 3302452.00           | 1363706.49            | 40.3266967 | -104.4151827 | 0.00             |          |
| 5323.00†   | 7.877              | 294.532        | 5284.22     | -492.40           | 237.63        | -520.67      | 3302439.47           | 1363712.02            | 40.3267123 | -104.4152274 | 0.00             |          |

# Planned Wellpath Report

BIGFOOT 11-6-2 PWP Rev-B.0

Page 4 of 8

## REFERENCE WELLPATH IDENTIFICATION

|          |  |           |                    |
|----------|--|-----------|--------------------|
| Operator | CONFLUENCE RESOURCES                               | Well      | BIGFOOT 11-6-2     |
| Field    | WELD COUNTY (NAD83, TRUE NORTH)                    | API/Legal |                    |
| Facility | SEC.11-T04N-R63W                                   | Wellbore  | BIGFOOT 11-6-2 PWB |
| Slot     | SLOT#19 BIGFOOT 11-6-2 (2306'FSL & 470'FWL,SEC.11) |           |                    |

## WELLPATH DATA (121 stations) † = interpolated, ‡ = extrapolated station

| MD<br>[ft] | Inclination<br>[°] | Azimuth<br>[°] | TVD<br>[ft] | Vert Sect<br>[ft] | North<br>[ft] | East<br>[ft] | Grid East<br>[US ft] | Grid North<br>[US ft] | Latitude   | Longitude    | DLS<br>[°/100ft] | Comments |
|------------|--------------------|----------------|-------------|-------------------|---------------|--------------|----------------------|-----------------------|------------|--------------|------------------|----------|
| 5423.00†   | 7.877              | 294.532        | 5383.28     | -504.19           | 243.32        | -533.14      | 3302426.93           | 1363717.56            | 40.3267279 | -104.4152721 | 0.00             |          |
| 5523.00†   | 7.877              | 294.532        | 5482.33     | -515.98           | 249.01        | -545.61      | 3302414.40           | 1363723.10            | 40.3267435 | -104.4153168 | 0.00             |          |
| 5623.00†   | 7.877              | 294.532        | 5581.39     | -527.77           | 254.70        | -558.07      | 3302401.86           | 1363728.63            | 40.3267591 | -104.4153615 | 0.00             |          |
| 5723.00†   | 7.877              | 294.532        | 5680.45     | -539.56           | 260.39        | -570.54      | 3302389.33           | 1363734.17            | 40.3267747 | -104.4154062 | 0.00             |          |
| 5738.71    | 7.877              | 294.532        | 5696.01     | -541.41           | 261.29        | -572.50      | 3302387.36           | 1363735.04            | 40.3267772 | -104.4154133 | 0.00             | KOP      |
| 5823.00†   | 3.796              | 19.439         | 5779.96     | -545.18           | 266.32        | -576.83      | 3302382.96           | 1363740.02            | 40.3267910 | -104.4154288 | 10.00            |          |
| 5923.00†   | 11.914             | 70.996         | 5879.02     | -533.66           | 272.82        | -565.94      | 3302393.77           | 1363746.65            | 40.3268089 | -104.4153898 | 10.00            |          |
| 6023.00†   | 21.662             | 79.071         | 5974.66     | -505.14           | 279.70        | -537.99      | 3302421.64           | 1363753.87            | 40.3268277 | -104.4152895 | 10.00            |          |
| 6123.00†   | 31.564             | 82.247         | 6063.96     | -460.47           | 286.75        | -493.82      | 3302465.71           | 1363761.46            | 40.3268471 | -104.4151311 | 10.00            |          |
| 6223.00†   | 41.509             | 84.015         | 6144.21     | -401.02           | 293.75        | -434.78      | 3302524.66           | 1363769.19            | 40.3268663 | -104.4149194 | 10.00            |          |
| 6323.00†   | 51.472             | 85.198         | 6212.97     | -328.60           | 300.50        | -362.67      | 3302596.68           | 1363776.82            | 40.3268848 | -104.4146607 | 10.00            |          |
| 6423.00†   | 61.445             | 86.091         | 6268.15     | -245.39           | 306.78        | -279.66      | 3302679.60           | 1363784.12            | 40.3269021 | -104.4143630 | 10.00            |          |
| 6523.00†   | 71.422             | 86.827         | 6308.08     | -153.94           | 312.42        | -188.29      | 3302770.89           | 1363790.87            | 40.3269176 | -104.4140353 | 10.00            |          |
| 6623.00†   | 81.402             | 87.482         | 6331.55     | -57.03            | 317.22        | -91.33       | 3302867.78           | 1363796.86            | 40.3269308 | -104.4136876 | 10.00            |          |
| 6709.15    | 90.000             | 88.017         | 6338.00†    | 28.60             | 320.59        | -5.58        | 3302953.48           | 1363801.28            | 40.3269400 | -104.4133800 | 10.00            | LANDING  |
| 6723.00†   | 90.000             | 88.017         | 6338.00     | 42.42             | 321.07        | 8.27         | 3302967.32           | 1363801.93            | 40.3269413 | -104.4133303 | 0.00             |          |
| 6823.00†   | 90.000             | 88.017         | 6338.00     | 142.16            | 324.53        | 108.21       | 3303067.21           | 1363806.62            | 40.3269508 | -104.4129719 | 0.00             |          |
| 6923.00†   | 90.000             | 88.017         | 6338.00     | 241.90            | 327.99        | 208.15       | 3303167.09           | 1363811.30            | 40.3269603 | -104.4126135 | 0.00             |          |
| 7023.00†   | 90.000             | 88.017         | 6338.00     | 341.64            | 331.45        | 308.09       | 3303266.98           | 1363815.98            | 40.3269698 | -104.4122550 | 0.00             |          |
| 7123.00†   | 90.000             | 88.017         | 6338.00     | 441.38            | 334.91        | 408.03       | 3303366.87           | 1363820.67            | 40.3269793 | -104.4118966 | 0.00             |          |
| 7223.00†   | 90.000             | 88.017         | 6338.00     | 541.12            | 338.37        | 507.97       | 3303466.75           | 1363825.35            | 40.3269888 | -104.4115382 | 0.00             |          |
| 7323.00†   | 90.000             | 88.017         | 6338.00     | 640.86            | 341.83        | 607.91       | 3303566.64           | 1363830.04            | 40.3269983 | -104.4111797 | 0.00             |          |
| 7423.00†   | 90.000             | 88.017         | 6338.00     | 740.60            | 345.29        | 707.85       | 3303666.52           | 1363834.72            | 40.3270078 | -104.4108213 | 0.00             |          |
| 7523.00†   | 90.000             | 88.017         | 6338.00     | 840.34            | 348.75        | 807.79       | 3303766.41           | 1363839.41            | 40.3270173 | -104.4104629 | 0.00             |          |
| 7623.00†   | 90.000             | 88.017         | 6338.00     | 940.08            | 352.21        | 907.73       | 3303866.29           | 1363844.09            | 40.3270268 | -104.4101044 | 0.00             |          |
| 7723.00†   | 90.000             | 88.017         | 6338.00     | 1039.82           | 355.67        | 1007.67      | 3303966.18           | 1363848.78            | 40.3270362 | -104.4097460 | 0.00             |          |
| 7823.00†   | 90.000             | 88.017         | 6338.00     | 1139.56           | 359.13        | 1107.61      | 3304066.07           | 1363853.46            | 40.3270457 | -104.4093875 | 0.00             |          |
| 7923.00†   | 90.000             | 88.017         | 6338.00     | 1239.30           | 362.60        | 1207.55      | 3304165.95           | 1363858.15            | 40.3270552 | -104.4090291 | 0.00             |          |
| 8023.00†   | 90.000             | 88.017         | 6338.00     | 1339.04           | 366.06        | 1307.49      | 3304265.84           | 1363862.83            | 40.3270647 | -104.4086707 | 0.00             |          |
| 8123.00†   | 90.000             | 88.017         | 6338.00     | 1438.78           | 369.52        | 1407.43      | 3304365.72           | 1363867.52            | 40.3270742 | -104.4083122 | 0.00             |          |

# Planned Wellpath Report

BIGFOOT 11-6-2 PWP Rev-B.0

Page 5 of 8

## REFERENCE WELLPATH IDENTIFICATION

|          |  |           |                    |
|----------|--|-----------|--------------------|
| Operator | CONFLUENCE RESOURCES                               | Well      | BIGFOOT 11-6-2     |
| Field    | WELD COUNTY (NAD83, TRUE NORTH)                    | API/Legal |                    |
| Facility | SEC.11-T04N-R63W                                   | Wellbore  | BIGFOOT 11-6-2 PWB |
| Slot     | SLOT#19 BIGFOOT 11-6-2 (2306'FSL & 470'FWL,SEC.11) |           |                    |

## WELLPATH DATA (121 stations) † = interpolated, ‡ = extrapolated station

| MD<br>[ft] | Inclination<br>[°] | Azimuth<br>[°] | TVD<br>[ft] | Vert Sect<br>[ft] | North<br>[ft] | East<br>[ft] | Grid East<br>[US ft] | Grid North<br>[US ft] | Latitude   | Longitude    | DLS<br>[°/100ft] | Comments |
|------------|--------------------|----------------|-------------|-------------------|---------------|--------------|----------------------|-----------------------|------------|--------------|------------------|----------|
| 8223.00†   | 90.000             | 88.017         | 6338.00     | 1538.52           | 372.98        | 1507.37      | 3304465.61           | 1363872.20            | 40.3270837 | -104.4079538 | 0.00             |          |
| 8323.00†   | 90.000             | 88.017         | 6338.00     | 1638.26           | 376.44        | 1607.31      | 3304565.50           | 1363876.88            | 40.3270932 | -104.4075954 | 0.00             |          |
| 8423.00†   | 90.000             | 88.017         | 6338.00     | 1738.00           | 379.90        | 1707.25      | 3304665.38           | 1363881.57            | 40.3271026 | -104.4072369 | 0.00             |          |
| 8523.00†   | 90.000             | 88.017         | 6338.00     | 1837.74           | 383.36        | 1807.19      | 3304765.27           | 1363886.25            | 40.3271121 | -104.4068785 | 0.00             |          |
| 8623.00†   | 90.000             | 88.017         | 6338.00     | 1937.48           | 386.82        | 1907.13      | 3304865.15           | 1363890.94            | 40.3271216 | -104.4065200 | 0.00             |          |
| 8723.00†   | 90.000             | 88.017         | 6338.00     | 2037.22           | 390.28        | 2007.07      | 3304965.04           | 1363895.62            | 40.3271311 | -104.4061616 | 0.00             |          |
| 8823.00†   | 90.000             | 88.017         | 6338.00     | 2136.96           | 393.74        | 2107.01      | 3305064.92           | 1363900.31            | 40.3271405 | -104.4058032 | 0.00             |          |
| 8923.00†   | 90.000             | 88.017         | 6338.00     | 2236.70           | 397.20        | 2206.95      | 3305164.81           | 1363904.99            | 40.3271500 | -104.4054447 | 0.00             |          |
| 9023.00†   | 90.000             | 88.017         | 6338.00     | 2336.44           | 400.66        | 2306.89      | 3305264.70           | 1363909.68            | 40.3271595 | -104.4050863 | 0.00             |          |
| 9123.00†   | 90.000             | 88.017         | 6338.00     | 2436.18           | 404.12        | 2406.83      | 3305364.58           | 1363914.36            | 40.3271690 | -104.4047279 | 0.00             |          |
| 9223.00†   | 90.000             | 88.017         | 6338.00     | 2535.92           | 407.58        | 2506.77      | 3305464.47           | 1363919.05            | 40.3271784 | -104.4043694 | 0.00             |          |
| 9323.00†   | 90.000             | 88.017         | 6338.00     | 2635.66           | 411.04        | 2606.71      | 3305564.35           | 1363923.73            | 40.3271879 | -104.4040110 | 0.00             |          |
| 9423.00†   | 90.000             | 88.017         | 6338.00     | 2735.40           | 414.50        | 2706.65      | 3305664.24           | 1363928.42            | 40.3271974 | -104.4036525 | 0.00             |          |
| 9523.00†   | 90.000             | 88.017         | 6338.00     | 2835.14           | 417.96        | 2806.59      | 3305764.12           | 1363933.10            | 40.3272068 | -104.4032941 | 0.00             |          |
| 9623.00†   | 90.000             | 88.017         | 6338.00     | 2934.88           | 421.42        | 2906.53      | 3305864.01           | 1363937.78            | 40.3272163 | -104.4029357 | 0.00             |          |
| 9723.00†   | 90.000             | 88.017         | 6338.00     | 3034.63           | 424.88        | 3006.47      | 3305963.90           | 1363942.47            | 40.3272258 | -104.4025772 | 0.00             |          |
| 9823.00†   | 90.000             | 88.017         | 6338.00     | 3134.37           | 428.34        | 3106.41      | 3306063.78           | 1363947.15            | 40.3272352 | -104.4022188 | 0.00             |          |
| 9923.00†   | 90.000             | 88.017         | 6338.00     | 3234.11           | 431.80        | 3206.35      | 3306163.67           | 1363951.84            | 40.3272447 | -104.4018603 | 0.00             |          |
| 10023.00†  | 90.000             | 88.017         | 6338.00     | 3333.85           | 435.26        | 3306.29      | 3306263.55           | 1363956.52            | 40.3272542 | -104.4015019 | 0.00             |          |
| 10123.00†  | 90.000             | 88.017         | 6338.00     | 3433.59           | 438.72        | 3406.23      | 3306363.44           | 1363961.21            | 40.3272636 | -104.4011435 | 0.00             |          |
| 10223.00†  | 90.000             | 88.017         | 6338.00     | 3533.33           | 442.19        | 3506.17      | 3306463.33           | 1363965.89            | 40.3272731 | -104.4007850 | 0.00             |          |
| 10323.00†  | 90.000             | 88.017         | 6338.00     | 3633.07           | 445.65        | 3606.11      | 3306563.21           | 1363970.58            | 40.3272825 | -104.4004266 | 0.00             |          |
| 10423.00†  | 90.000             | 88.017         | 6338.00     | 3732.81           | 449.11        | 3706.05      | 3306663.10           | 1363975.26            | 40.3272920 | -104.4000681 | 0.00             |          |
| 10523.00†  | 90.000             | 88.017         | 6338.00     | 3832.55           | 452.57        | 3805.99      | 3306762.98           | 1363979.95            | 40.3273015 | -104.3997097 | 0.00             |          |
| 10623.00†  | 90.000             | 88.017         | 6338.00     | 3932.29           | 456.03        | 3905.93      | 3306862.87           | 1363984.63            | 40.3273109 | -104.3993513 | 0.00             |          |
| 10723.00†  | 90.000             | 88.017         | 6338.00     | 4032.03           | 459.49        | 4005.87      | 3306962.75           | 1363989.32            | 40.3273204 | -104.3989928 | 0.00             |          |
| 10823.00†  | 90.000             | 88.017         | 6338.00     | 4131.77           | 462.95        | 4105.81      | 3307062.64           | 1363994.00            | 40.3273298 | -104.3986344 | 0.00             |          |
| 10923.00†  | 90.000             | 88.017         | 6338.00     | 4231.51           | 466.41        | 4205.75      | 3307162.53           | 1363998.69            | 40.3273393 | -104.3982759 | 0.00             |          |
| 11023.00†  | 90.000             | 88.017         | 6338.00     | 4331.25           | 469.87        | 4305.69      | 3307262.41           | 1364003.37            | 40.3273487 | -104.3979175 | 0.00             |          |
| 11123.00†  | 90.000             | 88.017         | 6338.00     | 4430.99           | 473.33        | 4405.63      | 3307362.30           | 1364008.05            | 40.3273582 | -104.3975591 | 0.00             |          |



## REFERENCE WELLPATH IDENTIFICATION

|          |  |           |                    |
|----------|--|-----------|--------------------|
| Operator | CONFLUENCE RESOURCES                               | Well      | BIGFOOT 11-6-2     |
| Field    | WELD COUNTY (NAD83, TRUE NORTH)                    | API/Legal |                    |
| Facility | SEC.11-T04N-R63W                                   | Wellbore  | BIGFOOT 11-6-2 PWB |
| Slot     | SLOT#19 BIGFOOT 11-6-2 (2306'FSL & 470'FWL,SEC.11) |           |                    |

## WELLPATH DATA (121 stations)

| MD [ft]  | Inclination [°] | Azimuth [°] | TVD [ft]             | Vert Sect [ft] | North [ft] | East [ft] | Grid East [US ft] | Grid North [US ft] | Latitude   | Longitude    | DLS [°/100ft] | Comments |
|----------|-----------------|-------------|----------------------|----------------|------------|-----------|-------------------|--------------------|------------|--------------|---------------|----------|
| 11142.27 | 90.000          | 88.017      | 6338.00 <sup>2</sup> | 4450.21        | 474.00     | 4424.89   | 3307381.54        | 1364008.96         | 40.3273600 | -104.3974900 | 0.00          | TD       |

## HOLE & CASING SECTIONS

- Ref Wellbore: BIGFOOT 11-6-2 PWB      Ref Wellpath: BIGFOOT 11-6-2 PWP Rev-B.0

| String/Diameter        | Start MD [ft] | End MD [ft] | Interval [ft] | Start TVD [ft] | End TVD [ft] | Start N/S [ft] | Start E/W [ft] | End N/S [ft] | End E/W [ft] |
|------------------------|---------------|-------------|---------------|----------------|--------------|----------------|----------------|--------------|--------------|
| 9.625in Casing Surface | 23.00         | 1704.64     | 1681.64       | 23.00          | 1700.00      | 0.00           | 0.00           | 31.75        | -69.57       |

## TARGETS

| Name  | MD [ft]  | TVD [ft] | North [ft] | East [ft] | Grid East [US ft] | Grid North [US ft] | Latitude   | Longitude    | Shape   |
|---|----------|----------|------------|-----------|-------------------|--------------------|------------|--------------|---------|
| SEC.11-T04N-R63W  | N/A      | -2.50    | 153.01     | 147.78    | 3303108.87        | 1363635.60         | 40.3264800 | -104.4128300 | polygon |
| 2D Polygon: dimensions not calculated                   |          |          |            |           |                   |                    |            |              |         |
| SEC.11-T04N-R63W 470' SETBACK                           | N/A      | -2.50    | 153.01     | 147.78    | 3303108.87        | 1363635.60         | 40.3264800 | -104.4128300 | polygon |
| 2D Polygon: dimensions not calculated                   |          |          |            |           |                   |                    |            |              |         |
| 2) BIGFOOT 11-6-2 BHL REV-1 (2601'FNL & 470'FEL,SEC.11) | 11142.27 | 6338.00  | 474.00     | 4424.89   | 3307381.54        | 1364008.96         | 40.3273600 | -104.3974900 | point   |
| 1) BIGFOOT 11-6-2 LP REV-1 (2626'FSL & 470'FWL,SEC.11)  | 6709.15  | 6338.00  | 320.59     | -5.58     | 3302953.48        | 1363801.28         | 40.3269400 | -104.4133800 | point   |



# Planned Wellpath Report

BIGFOOT 11-6-2 PWP Rev-B.0

Page 7 of 8



## REFERENCE WELLPATH IDENTIFICATION

|          |  |           |                    |
|----------|--|-----------|--------------------|
| Operator | CONFLUENCE RESOURCES                               | Well      | BIGFOOT 11-6-2     |
| Field    | WELD COUNTY (NAD83, TRUE NORTH)                    | API/Legal |                    |
| Facility | SEC.11-T04N-R63W                                   | Wellbore  | BIGFOOT 11-6-2 PWB |
| Slot     | SLOT#19 BIGFOOT 11-6-2 (2306'FSL & 470'FWL,SEC.11) |           |                    |

## SURVEY PROGRAM - Ref Wellbore: BIGFOOT 11-6-2 PWB Ref Wellpath: BIGFOOT 11-6-2 PWP Rev-B.0

| Start MD [ft] | End MD [ft] | Positional Uncertainty Model                     | Log Name/Comment | Wellbore           |
|---------------|-------------|--|------------------|--------------------|
| 23.00         | 1704.64     | BH NaviTrak (2019) (Standard)                    |                  | BIGFOOT 11-6-2 PWB |
| 1704.64       | 11142.27    | BH AutoTrak Curve/eXpress (2019) (Short spacing) |                  | BIGFOOT 11-6-2 PWB |





# Planned Wellpath Report

BIGFOOT 11-6-2 PWP Rev-B.0

Page 8 of 8



## REFERENCE WELLPATH IDENTIFICATION

|          |  |           |                    |
|----------|--|-----------|--------------------|
| Operator | CONFLUENCE RESOURCES                               | Well      | BIGFOOT 11-6-2     |
| Field    | WELD COUNTY (NAD83, TRUE NORTH)                    | API/Legal |                    |
| Facility | SEC.11-T04N-R63W                                   | Wellbore  | BIGFOOT 11-6-2 PWB |
| Slot     | SLOT#19 BIGFOOT 11-6-2 (2306'FSL & 470'FWL,SEC.11) |           |                    |

## DESIGN COMMENTS

| MD<br>[ft] | Inclination<br>[°] | Azimuth<br>[°] | TVD<br>[ft] | Comment            |
|------------|--------------------|----------------|-------------|--------------------|
| 23.00      | 0.000              | 294.532        | 23.00       | Tie On             |
| 950.00     | 0.000              | 294.532        | 950.00      | End of Tangent     |
| 1343.85    | 7.877              | 294.532        | 1342.61     | End of Build (J)   |
| 1704.64    | 7.877              | 294.532        | 1700.00     | End of Tangent (J) |
| 1804.64    | 7.877              | 294.532        | 1799.06     | End of Tangent     |
| 1804.66    | 7.877              | 294.532        | 1799.08     | Build (XS)         |
| 5738.71    | 7.877              | 294.532        | 5696.01     | KOP                |
| 6709.15    | 90.000             | 88.017         | 6338.00     | LANDING            |
| 11142.27   | 90.000             | 88.017         | 6338.00     | TD                 |



# Closest Approach Clearance Summary Report

BIGFOOT 11-6-2 PWP Rev-B.0 - SPE WPTS Stop  
Drilling HSE Risk (2017)  
Page 1 of 3



| REFERENCE WELLPATH IDENTIFICATION |  |           |                    |
|-----------------------------------|--|-----------|--------------------|
| Operator                          | CONFLUENCE RESOURCES                               | Well      | BIGFOOT 11-6-2     |
| Field                             | WELD COUNTY (NAD83, TRUE NORTH)                    | API/Legal |                    |
| Facility                          | SEC.11-T04N-R63W                                   | Wellbore  | BIGFOOT 11-6-2 PWB |
| Slot                              | SLOT#19 BIGFOOT 11-6-2 (2306'FSL & 470'FWL,SEC.11) |           |                    |

| REPORT SETUP INFORMATION |   |                  |                         |
|--------------------------|---|------------------|-------------------------|
| Projection System        | NAD83 / Lambert Colorado SP, Northern Zone (501), US feet | Software System  | WellArchitect® 6.0      |
| North Reference          | True  | User             | Painsetr                |
| Scale                    | 0.999958  | Report Generated | 4/26/2022 at 3:57:11 PM |
| Convergence at slot      | 0.70° East  | Database         | WellArchitectDB         |

| WELLPATH LOCATION     |                   |          |                  |                 |                        |               |
|-----------------------|-------------------|----------|------------------|-----------------|------------------------|---------------|
|                       | Local coordinates |          | Grid coordinates |                 | Geographic coordinates |               |
|                       | North[ft]         | East[ft] | Easting[US ft]   | Northing[US ft] | Latitude               | Longitude     |
| Slot Location         | -153.01           | -147.78  | 3302962.99       | 1363480.80      | 40.3260600°            | -104.4133600° |
| Facility Reference Pt |                   |          | 3303108.87       | 1363635.60      | 40.3264800°            | -104.4128300° |
| Field Reference Pt    |                   |          | 3230456.90       | 1245096.09      | 40.0032400°            | -104.6773400° |

| WELLPATH DATUM           |                   |   |           |
|--------------------------|-------------------|---|-----------|
| Calculation method       | Minimum Curvature | Rig (23') (KB) to Facility Vertical Datum   | 4639.00ft |
| Horizontal Reference Pt  | Slot              | Rig (23') (KB) to Mean Sea Level  | 4639.00ft |
| Vertical Reference Pt    | Rig (23') (KB)    | Rig (23') (KB) to Ground Level at Slot (SLOT#19 BIGFOOT 11-6-2 (2306'FSL & 470'FWL,SEC.11)) | 23.00ft   |
| MD Reference Pt          | Rig (23') (KB)    |   |           |
| Field Vertical Reference | Mean Sea Level    |   |           |

| POSITIONAL UNCERTAINTY CALCULATION SETTINGS   |                  |                  |         |                              |          |
|---|------------------|------------------|---------|------------------------------|----------|
| Ellipse Confidence Limit  | 3.50 Std Dev     | Ellipse Start MD | 23.00ft | Surface Position Uncertainty | included |
| Declination   | 7.76° East of TN | Dip Angle        | 66.72°  | Mag Field Strength           | 51850 nT |
| Slot Surface Uncertainty @1SD   |                  | Horizontal       | 0.100ft | Vertical                     | 1.000ft  |
| Facility Surface Uncertainty @1SD   |                  | Horizontal       | 8.200ft | Vertical                     | 3.000ft  |
| Positional Uncertainty values in the WELLPATH DATA table are the projection of the ellipsoid of uncertainty onto the vertical and horizontal planes |                  |                  |         |                              |          |



# Closest Approach Clearance Summary Report

BIGFOOT 11-6-2 PWP Rev-B.0 - SPE WPTS Stop  
Drilling HSE Risk (2017)  
Page 2 of 3



| REFERENCE WELLPATH IDENTIFICATION |  |           |                    |
|-----------------------------------|--|-----------|--------------------|
| Operator                          | CONFLUENCE RESOURCES                               | Well      | BIGFOOT 11-6-2     |
| Field                             | WELD COUNTY (NAD83, TRUE NORTH)                    | API/Legal |                    |
| Facility                          | SEC.11-T04N-R63W                                   | Wellbore  | BIGFOOT 11-6-2 PWB |
| Slot                              | SLOT#19 BIGFOOT 11-6-2 (2306'FSL & 470'FWL,SEC.11) |           |                    |

| PROXIMITY-SCAN RULE        |  |                      |       |
|----------------------------|--|----------------------|-------|
| Rule Name                  | SPE WPTS Stop Drilling HSE Risk (2017) | Rule Based On        | Ratio |
| Plane of Rule              | Closest Approach                       | Threshold Value      | 1.00  |
| Include Casing & Hole Size | yes                                    | Apply Cone of Safety | no    |

| HOLE & CASING SECTIONS   |                  |                |                  |                   |                 |                   |                   |                 |                 |
|--|------------------|----------------|------------------|-------------------|-----------------|-------------------|-------------------|-----------------|-----------------|
| - Ref Wellbore: BIGFOOT 11-6-2 PWB      Ref Wellpath: BIGFOOT 11-6-2 PWP Rev-B.0 |                  |                |                  |                   |                 |                   |                   |                 |                 |
| String/Diameter  | Start MD<br>[ft] | End MD<br>[ft] | Interval<br>[ft] | Start TVD<br>[ft] | End TVD<br>[ft] | Start N/S<br>[ft] | Start E/W<br>[ft] | End N/S<br>[ft] | End E/W<br>[ft] |
| 9.625in Casing Surface   | 23.00            | 1704.64        | 1681.64          | 23.00             | 1700.00         | 0.00              | 0.00              | 31.75           | -69.57          |

| SURVEY PROGRAM - Ref Wellbore: BIGFOOT 11-6-2 PWB      Ref Wellpath: BIGFOOT 11-6-2 PWP Rev-B.0 |                |  |                  |                    |
|---|----------------|--|------------------|--------------------|
| Start MD<br>[ft]  | End MD<br>[ft] | Positional Uncertainty Model                     | Log Name/Comment | Wellbore           |
| 23.00   | 1704.64        | BH NaviTrak (2019) (Standard)                    |                  | BIGFOOT 11-6-2 PWB |
| 1704.64   | 11142.27       | BH AutoTrak Curve/eXpress (2019) (Short spacing) |                  | BIGFOOT 11-6-2 PWB |



# Closest Approach Clearance Summary Report

BIGFOOT 11-6-2 PWP Rev-B.0 - SPE WPTS Stop  
Drilling HSE Risk (2017)  
Page 3 of 3



| REFERENCE WELLPATH IDENTIFICATION |  |           |                    |
|-----------------------------------|--|-----------|--------------------|
| Operator                          | CONFLUENCE RESOURCES                               | Well      | BIGFOOT 11-6-2     |
| Field                             | WELD COUNTY (NAD83, TRUE NORTH)                    | API/Legal |                    |
| Facility                          | SEC.11-T04N-R63W                                   | Wellbore  | BIGFOOT 11-6-2 PWB |
| Slot                              | SLOT#19 BIGFOOT 11-6-2 (2306'FSL & 470'FWL,SEC.11) |           |                    |

| CALCULATION RANGE & CUTOFF |                   |                    |
|----------------------------|-------------------|--------------------|
| From: 23.00ft MD           | To: 11142.27ft MD | C-C Cutoff: (none) |

| OFFSET WELL CLEARANCE SUMMARY (17 Offset Wellpaths selected) Ratios are calculated in Closest Approach plane |   |                  |                      |                             |                 |                        |                         |                        |                          |           |                          |             |
|--|---|------------------|----------------------|-----------------------------|-----------------|------------------------|-------------------------|------------------------|--------------------------|-----------|--------------------------|-------------|
| Offset Facility  | Offset Slot   | Offset Well      | Offset Wellbore      | Offset Wellpath             | Wellbore Status | C-C Clearance Distance |                         |                        | Rule Separation Ratio    |           |                          |             |
|  |   |                  |                      |                             |                 | Ref MD [ft]            | Min C-C Clear Dist [ft] | Diverging from MD [ft] | Ref MD of Min Ratio [ft] | Min Ratio | Min Ratio Dvrg from [ft] | Rule Status |
| SEC.11-T04N-R63W   | SLOT#20 BIGFOOT 11-7-3 (2281'FSL & 470'FWL,SEC.11)    | BIGFOOT 11-7-3   | BIGFOOT 11-7-3 PWB   | BIGFOOT 11-7-3 PWP Rev-B.0  | Planned         | 23.00                  | 21.86                   | 950.00                 | 11133.94                 | 0.84      | 11133.94                 | FAIL        |
| SEC.11-T04N-R63W   | SLOT#18 BIGFOOT 11-3-4 (2331'FSL & 470'FWL,SEC.11)    | BIGFOOT 11-3-4   | BIGFOOT 11-3-4 PWB   | BIGFOOT 11-3-4 PWP Rev-B.0  | Planned         | 23.00                  | 25.50                   | 11142.27               | 11142.27                 | 1.05      | 11142.27                 | WARN        |
| SEC.11-T04N-R63W   | SLOT#17 BIGFOOT 11-5-1 (2356'FSL & 470'FWL,SEC.11)    | BIGFOOT 11-5-1   | BIGFOOT 11-5-1 PWB   | BIGFOOT 11-5-1 PWP Rev-B.0  | Planned         | 23.00                  | 51.08                   | 823.00                 | 11142.27                 | 1.06      | 11142.27                 | WARN        |
| SEC.11-T04N-R63W   | SLOT#01 BIGFOOT 11-8-1 (2455'FSL & 620'FWL,SEC.11)    | BIGFOOT 11-8-1   | BIGFOOT 11-8-1 PWB   | BIGFOOT 11-8-1 PWP Rev-B.0  | Planned         | 2365.50                | 144.34                  | 2365.50                | 11138.17                 | 1.57      | 11138.17                 | PASS        |
| SEC.11-T04N-R63W   | SLOT#16 BIGFOOT 11-4-3 (2381'FSL & 470'FWL,SEC.11)    | BIGFOOT 11-4-3   | BIGFOOT 11-4-3 PWB   | BIGFOOT 11-4-3 PWP Rev-B.0  | Planned         | 23.00                  | 76.56                   | 11142.27               | 11142.27                 | 1.80      | 11142.27                 | PASS        |
| SEC.11-T04N-R63W   | SLOT#02 BIGFOOT 11-4-4 (2430'FSL & 620'FWL,SEC.11)    | BIGFOOT 11-4-4   | BIGFOOT 11-4-4 PWB   | BIGFOOT 11-4-4 PWP Rev-B.0  | Planned         | 2075.89                | 134.46                  | 2075.89                | 11142.27                 | 2.14      | 11142.27                 | PASS        |
| SEC.11-T04N-R63W   | SLOT#15 BIGFOOT 11-3-2 (2406'FSL & 470'FWL,SEC.11)    | BIGFOOT 11-3-2   | BIGFOOT 11-3-2 PWB   | BIGFOOT 11-3-2 PWP Rev-B.0  | Planned         | 23.00                  | 102.04                  | 11142.27               | 11142.27                 | 2.58      | 11142.27                 | PASS        |
| SEC.11-T04N-R63W   | SLOT#03 BIGFOOT 11-9-2 (2405'FSL & 620'FWL,SEC.11)    | BIGFOOT 11-9-2   | BIGFOOT 11-9-2 PWB   | BIGFOOT 11-9-2 PWP Rev-B.0  | Planned         | 1776.96                | 138.26                  | 1776.96                | 11142.27                 | 2.60      | 11142.27                 | PASS        |
| SEC.11-T04N-R63W   | SLOT#14 BIGFOOT 11-2-4 (2431'FSL & 470'FWL,SEC.11)    | BIGFOOT 11-2-4   | BIGFOOT 11-2-4 PWB   | BIGFOOT 11-2-4 PWP Rev-B.0  | Planned         | 23.00                  | 127.54                  | 11142.27               | 11142.27                 | 3.26      | 11142.27                 | PASS        |
| SEC.11-T04N-R63W   | SLOT#04 BIGFOOT 11-10-3 (2380'FSL & 620'FWL,SEC.11)   | BIGFOOT 11-10-3  | BIGFOOT 11-10-3 PWB  | BIGFOOT 11-10-3 PWP Rev-B.0 | Planned         | 1535.99                | 146.74                  | 1535.99                | 11142.27                 | 3.42      | 11142.27                 | PASS        |
| SEC.11-T04N-R63W   | SLOT#05 BIGFOOT 11-11-1 (2355'FSL & 620'FWL,SEC.11)   | BIGFOOT 11-11-1  | BIGFOOT 11-11-1 PWB  | BIGFOOT 11-11-1 PWP Rev-B.0 | Planned         | 1236.14                | 146.80                  | 1236.14                | 11142.27                 | 4.20      | 11142.27                 | PASS        |
| SEC.10-T04N-R63W   | SLOT#02 70 RANCH 10-11-2 (2360'FNL & 514'FEL, SEC.10) | 70 RANCH 10-11-2 | 70 RANCH 10-11-2 AWB | 70 RANCH 10-11-2 AWP        | Drilling        | 2453.24                | 964.62                  | 11142.27               | 11142.27                 | 4.24      | 11142.27                 | PASS        |
| SEC.11-T04N-R63W   | SLOT#06 BIGFOOT 11-5-4 (2330'FSL & 620'FWL,SEC.11)    | BIGFOOT 11-5-4   | BIGFOOT 11-5-4 PWB   | BIGFOOT 11-5-4 PWP Rev-B.0  | Planned         | 1131.10                | 142.59                  | 1131.10                | 11142.27                 | 4.67      | 11142.27                 | PASS        |
| SEC.11-T04N-R63W   | SLOT#07 BIGFOOT 11-12-2 (2305'FSL & 620'FWL,SEC.11)   | BIGFOOT 11-12-2  | BIGFOOT 11-12-2 PWB  | BIGFOOT 11-12-2 PWP Rev-B.0 | Planned         | 1057.20                | 142.32                  | 1057.20                | 11142.27                 | 5.21      | 11142.27                 | PASS        |
| SEC.10-T04N-R63W   | SLOT#01 70 RANCH 10-11-1 (2345'FNL & 514'FEL, SEC.10) | 70 RANCH 10-11-1 | 70 RANCH 10-11-1 AWB | 70 RANCH 10-11-1 AWP        | Drilling        | 3688.88                | 1008.16                 | 11142.27               | 11142.27                 | 5.51      | 11142.27                 | PASS        |

| OFFSET WELL CLEARANCE SUMMARY (17 Offset Wellpaths selected) Ratios are calculated in Closest Approach plane |   |                 |                     |                             |                 |                        |                         |                        |                          |           |                          |             |
|--|---|-----------------|---------------------|-----------------------------|-----------------|------------------------|-------------------------|------------------------|--------------------------|-----------|--------------------------|-------------|
| Offset Facility  | Offset Slot   | Offset Well     | Offset Wellbore     | Offset Wellpath             | Wellbore Status | C-C Clearance Distance |                         |                        | Rule Separation Ratio    |           |                          |             |
|  |   |                 |                     |                             |                 | Ref MD [ft]            | Min C-C Clear Dist [ft] | Diverging from MD [ft] | Ref MD of Min Ratio [ft] | Min Ratio | Min Ratio Dvrg from [ft] | Rule Status |
| SEC.11-T04N-R63W   | SLOT#08 BIGFOOT 11-13-3 (2280'FSL & 620'FWL,SEC.11) | BIGFOOT 11-13-3 | BIGFOOT 11-13-3 PWB | BIGFOOT 11-13-3 PWP Rev-B.0 | Planned         | 960.08                 | 148.55                  | 960.08                 | 11142.27                 | 6.03      | 11142.27                 | PASS        |
| SEC.11-T04N-R63W   | SLOT#13 BIGFOOT 11-1-4 (2456'FSL & 470'FWL,SEC.11)  | BIGFOOT 11-1-4  | BIGFOOT 11-1-4 PWB  | BIGFOOT 11-1-4 PWP Rev-B.0  | Planned         | 23.00                  | 153.03                  | 11142.27               | 11142.27                 | 6.05      | 11142.27                 | PASS        |