

CONFLUENCE RESOURCES

Location: COLORADO Slot: SLOT#17 BIGFOOT 11-5-1 (2356FSL & 470FWL,SEC.11)

Field: WELD COUNTY (NAD83, TRUE NORTH) Well: BIGFOOT 11-5-1

Facility: SEC.11-T04N-R63W Wellbore: BIGFOOT 11-5-1 PWB

Plot reference wellpath is BIGFOOT 11-5-1 PWP RevB.0

True vertical depths are referenced to Rig (23) (KB)

Reference wellpath measured depths are referenced to Rig (23) (KB)

Rig (23) (KB) to Mean Sea Level: 4639 feet

Mean Sea Level to Ground level (At Slot: SLOT#17 BIGFOOT 11-5-1 (2356FSL & 470FWL,SEC.11)): -4616 feet

Offset wellpath MDs are referenced to each path's default MD datum

Grid System: NAD83 / Lambert Colorado SP, Northern Zone (501), US feet

North Reference: True north

Scale: True distance

Coordinates are in feet referenced to Slot

Depths are in feet

Created by: painseir on 2022-04-26; Database: WellArchitectDB

Location Information

Facility Name			Grid East (US ft)	Grid North (US ft)	Latitude	Longitude
SEC.11-T04N-R63W			3303108.873	1363635.600	40°19'35.3280"N	104°24'46.1880"W
Slot	Local N (ft)	Local E (ft)	Grid East (US ft)	Grid North (US ft)	Latitude	Longitude
SLOT#17 BIGFOOT 11-5-1 (2356FSL & 470FWL,SEC.11)	-102.01	-150.57	3302969.576	1363531.761	40°19'34.3200"N	104°24'48.1320"W
Rig (23) (KB) to Ground level (At Slot: SLOT#17 BIGFOOT 11-5-1 (2356FSL & 470FWL,SEC.11))			23ft			
Mean Sea Level to Ground level (At Slot: SLOT#17 BIGFOOT 11-5-1 (2356FSL & 470FWL,SEC.11))			-4616ft			
Rig (23) (KB) to Mean Sea Level			4639ft			

Hole and Casing Sections

Name	Start MD (ft)	End MD (ft)	Interval (ft)	Start TVD (ft)	End TVD (ft)	Start Local N (ft)	Start Local E (ft)	End Local N (ft)	End Local E (ft)	Wellbore
9.625in Casing Surface	23.00	1707.33	1684.33	23.00	1700.00	0.00	0.00	79.82	-63.31	BIGFOOT 11-5-1 PWB

Survey Program

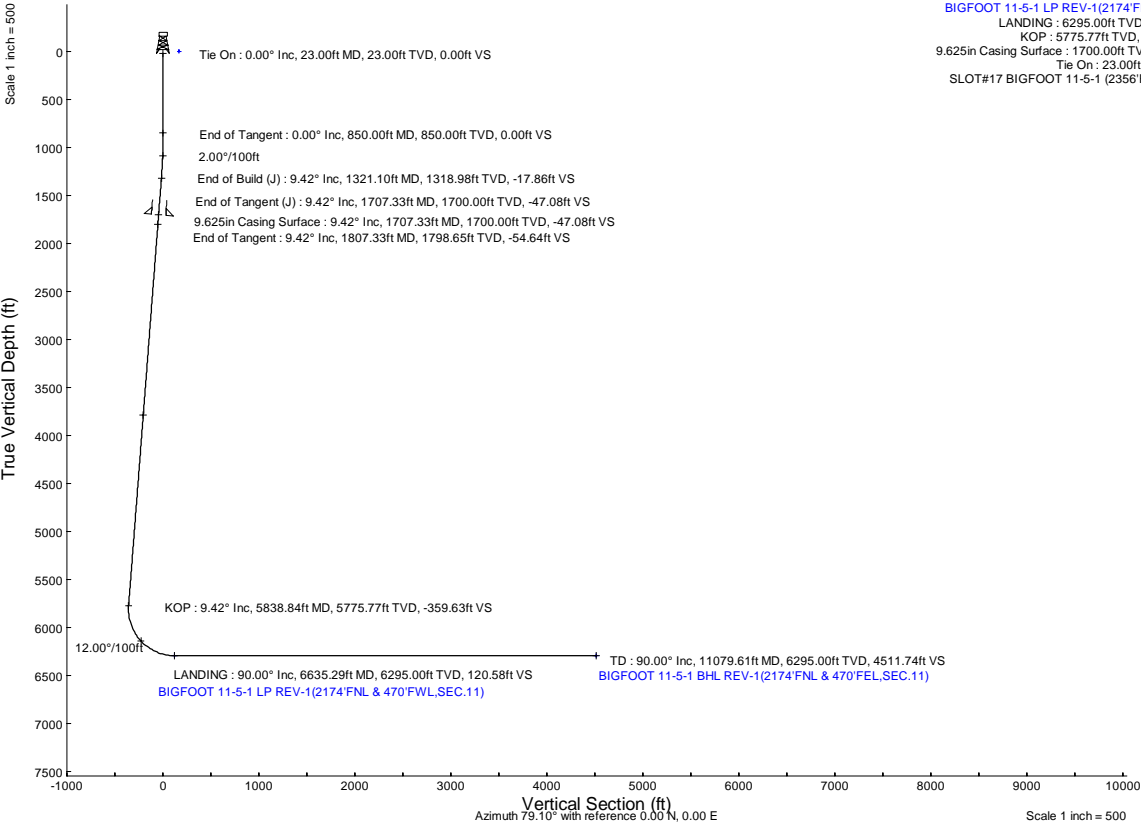
Start MD (ft)	End MD (ft)	Tool	Model	Log Name/Comment	Wellbore
23.00	1707.33	BH NavTrak (2019)	BH NavTrak (2019) (Standard)		BIGFOOT 11-5-1 PWB
1707.33	11079.61	BH AutoTrak Curve/eXpress (2019)	BH AutoTrak Curve/eXpress (2019) (Short spacing)		BIGFOOT 11-5-1 PWB

Bottom Hole Location

MD (ft)	Inc (°)	Az (°)	TVD (ft)	Local N (ft)	Local E (ft)	Grid East (US ft)	Grid North (US ft)	Latitude	Longitude
11079.61	90.000	87.975	6295.00	852.88	4430.39	3307378.99	1364438.82	40°19'42.7440"N	104°23'50.9280"W

Targets

Name	MD (ft)	TVD (ft)	Local N (ft)	Local E (ft)	Grid East (US ft)	Grid North (US ft)	Latitude	Longitude
SEC.11-T04N-R63W	N/A	-2.50	102.01	150.57	3303108.87	1363635.60	40°19'35.3280"N	104°24'46.1880"W
SEC.11-T04N-R63W 470' SETBACK	N/A	-2.50	102.01	150.57	3303108.87	1363635.60	40°19'35.3280"N	104°24'46.1880"W
BIGFOOT 11-5-1 BHL REV-1(2174FNL & 470FEL,SEC.11)	11079.61	6295.00	852.88	4430.39	3307378.99	1364438.82	40°19'42.7440"N	104°23'50.9280"W
BIGFOOT 11-5-1 LP REV-1(2174FNL & 470FWL,SEC.11)	6635.29	6295.00	695.83	-11.15	3302939.90	1364227.37	40°19'41.1960"N	104°24'48.2760"W



Well Profile Data

Design Comment	MD (ft)	Inc (°)	Az (°)	TVD (ft)	Local N (ft)	Local E (ft)	DLS (°/100ft)	VS (ft)
Tie On	23.00	0.000	321.580	23.00	0.00	0.00	0.00	0.00
End of Tangent	850.00	0.000	321.580	850.00	0.00	0.00	0.00	0.00
End of Build (J)	1321.10	9.422	321.580	1318.98	30.28	-24.02	2.00	-17.86
End of Tangent (J)	1707.33	9.422	321.580	1700.00	79.82	-63.31	0.00	-47.08
End of Tangent	1807.33	9.422	321.580	1798.65	92.64	-73.48	0.00	-54.64
KOP	5838.84	9.422	321.580	5775.77	609.72	-483.61	0.00	-359.63
LANDING	6635.29	90.000	87.975	6295.00	695.83	-11.15	12.00	120.58
TD	11079.61	90.000	87.975	6295.00	852.88	4430.39	0.00	4511.74

Scale 1 inch = 500

Easting (ft)



BIGFOOT 11-5-1 LP REV-1(2174FNL & 470FWL,SEC.11)

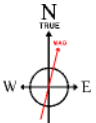
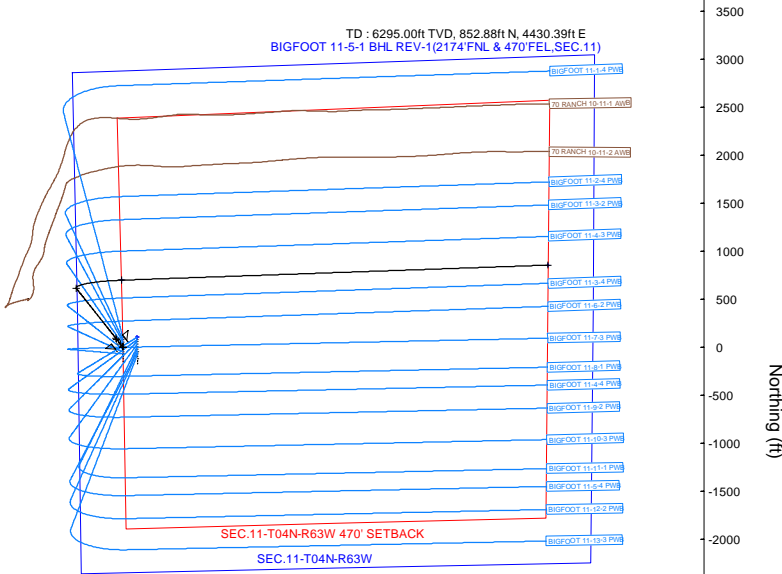
LANDING : 6295.00ft TVD, 695.83ft N, 11.15ft W

KOP : 5775.77ft TVD, 609.72ft N, 483.61ft W

9.625in Casing Surface : 1700.00ft TVD, 79.82ft N, 63.31ft W

Tie On : 23.00ft TVD, 0.00ft N, 0.00ft E

SLOT#17 BIGFOOT 11-5-1 (2356FSL & 470FWL,SEC.11)



HDM2022v4.0 (1900.0 to 2023.0) Dp: 66.72° Field: 51850.3 nT

Magnetic North is 7.76 degrees East of True North (at 4/12/2022)

To correct azimuth from Magnetic to True add 7.76 degrees



Planned Wellpath Report

BIGFOOT 11-5-1 PWP Rev-B.0

Page 1 of 6



REFERENCE WELLPATH IDENTIFICATION

Operator	CONFLUENCE RESOURCES	Well	BIGFOOT 11-5-1
Field	WELD COUNTY (NAD83, TRUE NORTH)	API/Legal	
Facility	SEC.11-T04N-R63W	Wellbore	BIGFOOT 11-5-1 PWB
Slot	SLOT#17 BIGFOOT 11-5-1 (2356'FSL & 470'FWL,SEC.11)		

REPORT SETUP INFORMATION

Projection System	NAD83 / Lambert Colorado SP, Northern Zone (501), US feet	Software System	WellArchitect® 6.0
North Reference	True	User	Painsetr
Scale	0.999958	Report Generated	4/26/2022 at 3:39:01 PM
Convergence at slot	0.70° East	Database	WellArchitectDB

WELLPATH LOCATION

	Local coordinates		Grid coordinates		Geographic coordinates	
	North[ft]	East[ft]	Easting[US ft]	Northing[US ft]	Latitude	Longitude
Slot Location	-102.01	-150.57	3302959.58	1363531.76	40.3262000°	-104.4133700°
Facility Reference Pt			3303108.87	1363635.60	40.3264800°	-104.4128300°
Field Reference Pt			3230456.90	1245096.09	40.0032400°	-104.6773400°

WELLPATH DATUM

Calculation method	Minimum curvature	Rig (23') (KB) to Facility Vertical Datum	4639.00ft
Horizontal Reference Pt	Slot	Rig (23') (KB) to Mean Sea Level	4639.00ft
Vertical Reference Pt	Rig (23') (KB)	Rig (23') (KB) to Ground Level at Slot (SLOT#17 BIGFOOT 11-5-1 (2356'FSL & 470'FWL,SEC.11))	23.00ft
MD Reference Pt	Rig (23') (KB)	Section Origin	N 0.00, E 0.00 ft
Field Vertical Reference	Mean Sea Level	Section Azimuth	79.10°



Planned Wellpath Report

BIGFOOT 11-5-1 PWP Rev-B.0

Page 2 of 6



REFERENCE WELLPATH IDENTIFICATION

Operator	CONFLUENCE RESOURCES	Well	BIGFOOT 11-5-1
Field	WELD COUNTY (NAD83, TRUE NORTH)	API/Legal	
Facility	SEC.11-T04N-R63W	Wellbore	BIGFOOT 11-5-1 PWB
Slot	SLOT#17 BIGFOOT 11-5-1 (2356'FSL & 470'FWL,SEC.11)		

WELLPATH DATA (119 stations) † = interpolated, ‡ = extrapolated station

MD [ft]	Inclination [°]	Azimuth [°]	TVD [ft]	Vert Sect [ft]	North [ft]	East [ft]	Grid East [US ft]	Grid North [US ft]	Latitude	Longitude	DLS [°/100ft]	Comments
0.00†	0.000	321.580	0.00	0.00	0.00	0.00	3302959.58	1363531.76	40.3262000	-104.4133700	0.00	
23.00	0.000	321.580	23.00	0.00	0.00	0.00	3302959.58	1363531.76	40.3262000	-104.4133700	0.00	Tie On
123.00†	0.000	321.580	123.00	0.00	0.00	0.00	3302959.58	1363531.76	40.3262000	-104.4133700	0.00	
223.00†	0.000	321.580	223.00	0.00	0.00	0.00	3302959.58	1363531.76	40.3262000	-104.4133700	0.00	
323.00†	0.000	321.580	323.00	0.00	0.00	0.00	3302959.58	1363531.76	40.3262000	-104.4133700	0.00	
423.00†	0.000	321.580	423.00	0.00	0.00	0.00	3302959.58	1363531.76	40.3262000	-104.4133700	0.00	
523.00†	0.000	321.580	523.00	0.00	0.00	0.00	3302959.58	1363531.76	40.3262000	-104.4133700	0.00	
623.00†	0.000	321.580	623.00	0.00	0.00	0.00	3302959.58	1363531.76	40.3262000	-104.4133700	0.00	
723.00†	0.000	321.580	723.00	0.00	0.00	0.00	3302959.58	1363531.76	40.3262000	-104.4133700	0.00	
823.00†	0.000	321.580	823.00	0.00	0.00	0.00	3302959.58	1363531.76	40.3262000	-104.4133700	0.00	
850.00	0.000	321.580	850.00	0.00	0.00	0.00	3302959.58	1363531.76	40.3262000	-104.4133700	0.00	End of Tangent
923.00†	1.460	321.580	922.99	-0.43	0.73	-0.58	3302958.99	1363532.48	40.3262020	-104.4133721	2.00	
1023.00†	3.460	321.580	1022.89	-2.41	4.09	-3.25	3302956.28	1363535.81	40.3262112	-104.4133816	2.00	
1123.00†	5.460	321.580	1122.59	-6.01	10.18	-8.08	3302951.37	1363541.84	40.3262280	-104.4133990	2.00	
1223.00†	7.460	321.580	1221.95	-11.21	19.00	-15.07	3302944.28	1363550.57	40.3262521	-104.4134240	2.00	
1321.10	9.422	321.580	1318.98	-17.86	30.28	-24.02	3302935.19	1363561.74	40.3262831	-104.4134561	2.00	End of Build (J)
1323.00†	9.422	321.580	1320.85	-18.00	30.52	-24.21	3302934.99	1363561.98	40.3262838	-104.4134568	0.00	
1423.00†	9.422	321.580	1419.50	-25.57	43.35	-34.38	3302924.67	1363574.68	40.3263190	-104.4134933	0.00	
1523.00†	9.422	321.580	1518.16	-33.13	56.18	-44.56	3302914.34	1363587.38	40.3263542	-104.4135298	0.00	
1623.00†	9.422	321.580	1616.81	-40.70	69.00	-54.73	3302904.01	1363600.08	40.3263894	-104.4135663	0.00	
1707.33	9.422	321.580	1700.00	-47.08	79.82	-63.31	3302895.30	1363610.79	40.3264191	-104.4135971	0.00	End of Tangent (J)
1723.00†	9.422	321.580	1715.46	-48.26	81.83	-64.90	3302893.68	1363612.78	40.3264246	-104.4136028	0.00	
1807.33	9.422	321.580	1798.65	-54.64	92.64	-73.48	3302884.97	1363623.49	40.3264543	-104.4136335	0.00	End of Tangent
1823.00†	9.422	321.580	1814.11	-55.83	94.65	-75.07	3302883.35	1363625.48	40.3264598	-104.4136393	0.00	
1923.00†	9.422	321.580	1912.76	-63.39	107.48	-85.25	3302873.02	1363638.18	40.3264950	-104.4136757	0.00	
2023.00†	9.422	321.580	2011.41	-70.96	120.30	-95.42	3302862.69	1363650.88	40.3265302	-104.4137122	0.00	
2123.00†	9.422	321.580	2110.06	-78.52	133.13	-105.59	3302852.36	1363663.58	40.3265654	-104.4137487	0.00	
2223.00†	9.422	321.580	2208.71	-86.09	145.96	-115.77	3302842.03	1363676.28	40.3266006	-104.4137852	0.00	
2323.00†	9.422	321.580	2307.36	-93.65	158.78	-125.94	3302831.71	1363688.98	40.3266358	-104.4138217	0.00	
2423.00†	9.422	321.580	2406.01	-101.22	171.61	-136.11	3302821.38	1363701.68	40.3266711	-104.4138582	0.00	

Planned Wellpath Report

BIGFOOT 11-5-1 PWP Rev-B.0

Page 3 of 6

REFERENCE WELLPATH IDENTIFICATION

Operator	CONFLUENCE RESOURCES	Well	BIGFOOT 11-5-1
Field	WELD COUNTY (NAD83, TRUE NORTH)	API/Legal	
Facility	SEC.11-T04N-R63W	Wellbore	BIGFOOT 11-5-1 PWB
Slot	SLOT#17 BIGFOOT 11-5-1 (2356'FSL & 470'FWL,SEC.11)		

WELLPATH DATA (119 stations) † = interpolated, ‡ = extrapolated station

MD [ft]	Inclination [°]	Azimuth [°]	TVD [ft]	Vert Sect [ft]	North [ft]	East [ft]	Grid East [US ft]	Grid North [US ft]	Latitude	Longitude	DLS [°/100ft]	Comments
2523.00†	9.422	321.580	2504.67	-108.78	184.43	-146.29	3302811.05	1363714.38	40.3267063	-104.4138947	0.00	
2623.00†	9.422	321.580	2603.32	-116.35	197.26	-156.46	3302800.72	1363727.08	40.3267415	-104.4139311	0.00	
2723.00†	9.422	321.580	2701.97	-123.91	210.09	-166.63	3302790.39	1363739.78	40.3267767	-104.4139676	0.00	
2823.00†	9.422	321.580	2800.62	-131.48	222.91	-176.80	3302780.06	1363752.48	40.3268119	-104.4140041	0.00	
2923.00†	9.422	321.580	2899.27	-139.04	235.74	-186.98	3302769.73	1363765.18	40.3268471	-104.4140406	0.00	
3023.00†	9.422	321.580	2997.92	-146.61	248.56	-197.15	3302759.40	1363777.88	40.3268823	-104.4140771	0.00	
3123.00†	9.422	321.580	3096.57	-154.17	261.39	-207.32	3302749.07	1363790.58	40.3269175	-104.4141136	0.00	
3223.00†	9.422	321.580	3195.22	-161.74	274.22	-217.50	3302738.75	1363803.28	40.3269527	-104.4141501	0.00	
3323.00†	9.422	321.580	3293.87	-169.30	287.04	-227.67	3302728.42	1363815.98	40.3269879	-104.4141865	0.00	
3423.00†	9.422	321.580	3392.52	-176.87	299.87	-237.84	3302718.09	1363828.68	40.3270231	-104.4142230	0.00	
3523.00†	9.422	321.580	3491.17	-184.43	312.69	-248.02	3302707.76	1363841.38	40.3270583	-104.4142595	0.00	
3623.00†	9.422	321.580	3589.83	-192.00	325.52	-258.19	3302697.43	1363854.08	40.3270935	-104.4142960	0.00	
3723.00†	9.422	321.580	3688.48	-199.56	338.34	-268.36	3302687.10	1363866.78	40.3271287	-104.4143325	0.00	
3823.00†	9.422	321.580	3787.13	-207.13	351.17	-278.53	3302676.77	1363879.48	40.3271639	-104.4143690	0.00	
3923.00†	9.422	321.580	3885.78	-214.69	364.00	-288.71	3302666.44	1363892.18	40.3271991	-104.4144055	0.00	
4023.00†	9.422	321.580	3984.43	-222.26	376.82	-298.88	3302656.11	1363904.88	40.3272343	-104.4144419	0.00	
4123.00†	9.422	321.580	4083.08	-229.82	389.65	-309.05	3302645.78	1363917.58	40.3272696	-104.4144784	0.00	
4223.00†	9.422	321.580	4181.73	-237.39	402.47	-319.23	3302635.46	1363930.28	40.3273048	-104.4145149	0.00	
4323.00†	9.422	321.580	4280.38	-244.95	415.30	-329.40	3302625.13	1363942.98	40.3273400	-104.4145514	0.00	
4423.00†	9.422	321.580	4379.03	-252.52	428.13	-339.57	3302614.80	1363955.68	40.3273752	-104.4145879	0.00	
4523.00†	9.422	321.580	4477.68	-260.09	440.95	-349.75	3302604.47	1363968.37	40.3274104	-104.4146244	0.00	
4623.00†	9.422	321.580	4576.33	-267.65	453.78	-359.92	3302594.14	1363981.07	40.3274456	-104.4146609	0.00	
4723.00†	9.422	321.580	4674.99	-275.22	466.60	-370.09	3302583.81	1363993.77	40.3274808	-104.4146974	0.00	
4823.00†	9.422	321.580	4773.64	-282.78	479.43	-380.27	3302573.48	1364006.47	40.3275160	-104.4147338	0.00	
4923.00†	9.422	321.580	4872.29	-290.35	492.26	-390.44	3302563.15	1364019.17	40.3275512	-104.4147703	0.00	
5023.00†	9.422	321.580	4970.94	-297.91	505.08	-400.61	3302552.82	1364031.87	40.3275864	-104.4148068	0.00	
5123.00†	9.422	321.580	5069.59	-305.48	517.91	-410.79	3302542.49	1364044.57	40.3276216	-104.4148433	0.00	
5223.00†	9.422	321.580	5168.24	-313.04	530.73	-420.96	3302532.16	1364057.27	40.3276568	-104.4148798	0.00	
5323.00†	9.422	321.580	5266.89	-320.61	543.56	-431.13	3302521.84	1364069.97	40.3276920	-104.4149163	0.00	
5423.00†	9.422	321.580	5365.54	-328.17	556.39	-441.30	3302511.51	1364082.67	40.3277272	-104.4149528	0.00	

Planned Wellpath Report

BIGFOOT 11-5-1 PWP Rev-B.0

Page 4 of 6

REFERENCE WELLPATH IDENTIFICATION

Operator	CONFLUENCE RESOURCES	Well	BIGFOOT 11-5-1
Field	WELD COUNTY (NAD83, TRUE NORTH)	API/Legal	
Facility	SEC.11-T04N-R63W	Wellbore	BIGFOOT 11-5-1 PWB
Slot	SLOT#17 BIGFOOT 11-5-1 (2356'FSL & 470'FWL,SEC.11)		

WELLPATH DATA (119 stations) † = interpolated, ‡ = extrapolated station

MD [ft]	Inclination [°]	Azimuth [°]	TVD [ft]	Vert Sect [ft]	North [ft]	East [ft]	Grid East [US ft]	Grid North [US ft]	Latitude	Longitude	DLS [°/100ft]	Comments
5523.00†	9.422	321.580	5464.19	-335.74	569.21	-451.48	3302501.18	1364095.37	40.3277624	-104.4149892	0.00	
5623.00†	9.422	321.580	5562.84	-343.30	582.04	-461.65	3302490.85	1364108.07	40.3277976	-104.4150257	0.00	
5723.00†	9.422	321.580	5661.49	-350.87	594.86	-471.82	3302480.52	1364120.77	40.3278328	-104.4150622	0.00	
5823.00†	9.422	321.580	5760.15	-358.43	607.69	-482.00	3302470.19	1364133.47	40.3278681	-104.4150987	0.00	
5838.84	9.422	321.580	5775.77	-359.63	609.72	-483.61	3302468.55	1364135.48	40.3278736	-104.4151045	0.00	KOP
5923.00†	8.846	28.845	5859.08	-358.67	620.81	-484.77	3302467.26	1364146.56	40.3279041	-104.4151087	12.00	
6023.00†	18.148	63.926	5956.35	-338.66	634.44	-467.01	3302484.85	1364160.41	40.3279415	-104.4150449	12.00	
6123.00†	29.440	74.285	6047.74	-298.99	648.00	-429.22	3302522.46	1364174.42	40.3279787	-104.4149094	12.00	
6223.00†	41.112	79.171	6129.26	-241.42	660.88	-373.07	3302578.45	1364187.99	40.3280141	-104.4147080	12.00	
6323.00†	52.911	82.179	6197.33	-168.45	672.52	-301.00	3302650.37	1364200.52	40.3280460	-104.4144496	12.00	
6423.00†	64.765	84.365	6248.99	-83.27	682.43	-216.17	3302735.07	1364211.46	40.3280732	-104.4141453	12.00	
6523.00†	76.646	86.158	6281.97	10.39	690.16	-122.28	3302828.86	1364220.34	40.3280944	-104.4138086	12.00	
6623.00†	88.538	87.780	6294.84	108.44	695.37	-23.43	3302927.63	1364226.76	40.3281088	-104.4134540	12.00	
6635.29	90.000	87.975	6295.00†	120.58	695.83	-11.15	3302939.90	1364227.37	40.3281100	-104.4134100	12.00	LANDING
6723.00†	90.000	87.975	6295.00	207.25	698.93	76.50	3303027.51	1364231.54	40.3281185	-104.4130956	0.00	
6823.00†	90.000	87.975	6295.00	306.05	702.46	176.44	3303127.39	1364236.30	40.3281282	-104.4127372	0.00	
6923.00†	90.000	87.975	6295.00	404.85	705.99	276.38	3303227.27	1364241.06	40.3281379	-104.4123787	0.00	
7023.00†	90.000	87.975	6295.00	503.66	709.53	376.32	3303327.15	1364245.82	40.3281476	-104.4120203	0.00	
7123.00†	90.000	87.975	6295.00	602.46	713.06	476.25	3303427.04	1364250.57	40.3281573	-104.4116619	0.00	
7223.00†	90.000	87.975	6295.00	701.26	716.60	576.19	3303526.92	1364255.33	40.3281670	-104.4113034	0.00	
7323.00†	90.000	87.975	6295.00	800.07	720.13	676.13	3303626.80	1364260.09	40.3281767	-104.4109450	0.00	
7423.00†	90.000	87.975	6295.00	898.87	723.66	776.07	3303726.68	1364264.85	40.3281864	-104.4105866	0.00	
7523.00†	90.000	87.975	6295.00	997.68	727.20	876.00	3303826.56	1364269.60	40.3281961	-104.4102281	0.00	
7623.00†	90.000	87.975	6295.00	1096.48	730.73	975.94	3303926.45	1364274.36	40.3282058	-104.4098697	0.00	
7723.00†	90.000	87.975	6295.00	1195.28	734.26	1075.88	3304026.33	1364279.12	40.3282154	-104.4095113	0.00	
7823.00†	90.000	87.975	6295.00	1294.09	737.80	1175.82	3304126.21	1364283.88	40.3282251	-104.4091528	0.00	
7923.00†	90.000	87.975	6295.00	1392.89	741.33	1275.75	3304226.09	1364288.64	40.3282348	-104.4087944	0.00	
8023.00†	90.000	87.975	6295.00	1491.69	744.86	1375.69	3304325.98	1364293.39	40.3282445	-104.4084360	0.00	
8123.00†	90.000	87.975	6295.00	1590.50	748.40	1475.63	3304425.86	1364298.15	40.3282542	-104.4080775	0.00	
8223.00†	90.000	87.975	6295.00	1689.30	751.93	1575.57	3304525.74	1364302.91	40.3282639	-104.4077191	0.00	

REFERENCE WELLPATH IDENTIFICATION

Operator	CONFLUENCE RESOURCES	Well	BIGFOOT 11-5-1
Field	WELD COUNTY (NAD83, TRUE NORTH)	API/Legal	
Facility	SEC.11-T04N-R63W	Wellbore	BIGFOOT 11-5-1 PWB
Slot	SLOT#17 BIGFOOT 11-5-1 (2356'FSL & 470'FWL,SEC.11)		

WELLPATH DATA (119 stations) † = interpolated, ‡ = extrapolated station

MD [ft]	Inclination [°]	Azimuth [°]	TVD [ft]	Vert Sect [ft]	North [ft]	East [ft]	Grid East [US ft]	Grid North [US ft]	Latitude	Longitude	DLS [°/100ft]	Comments
8323.00†	90.000	87.975	6295.00	1788.11	755.47	1675.50	3304625.62	1364307.67	40.3282735	-104.4073607	0.00	
8423.00†	90.000	87.975	6295.00	1886.91	759.00	1775.44	3304725.51	1364312.42	40.3282832	-104.4070022	0.00	
8523.00†	90.000	87.975	6295.00	1985.71	762.53	1875.38	3304825.39	1364317.18	40.3282929	-104.4066438	0.00	
8623.00†	90.000	87.975	6295.00	2084.52	766.07	1975.32	3304925.27	1364321.94	40.3283026	-104.4062854	0.00	
8723.00†	90.000	87.975	6295.00	2183.32	769.60	2075.25	3305025.15	1364326.70	40.3283123	-104.4059269	0.00	
8823.00†	90.000	87.975	6295.00	2282.12	773.13	2175.19	3305125.04	1364331.46	40.3283219	-104.4055685	0.00	
8923.00†	90.000	87.975	6295.00	2380.93	776.67	2275.13	3305224.92	1364336.21	40.3283316	-104.4052101	0.00	
9023.00†	90.000	87.975	6295.00	2479.73	780.20	2375.07	3305324.80	1364340.97	40.3283413	-104.4048516	0.00	
9123.00†	90.000	87.975	6295.00	2578.53	783.74	2475.00	3305424.68	1364345.73	40.3283510	-104.4044932	0.00	
9223.00†	90.000	87.975	6295.00	2677.34	787.27	2574.94	3305524.56	1364350.49	40.3283606	-104.4041348	0.00	
9323.00†	90.000	87.975	6295.00	2776.14	790.80	2674.88	3305624.45	1364355.25	40.3283703	-104.4037763	0.00	
9423.00†	90.000	87.975	6295.00	2874.95	794.34	2774.82	3305724.33	1364360.00	40.3283800	-104.4034179	0.00	
9523.00†	90.000	87.975	6295.00	2973.75	797.87	2874.76	3305824.21	1364364.76	40.3283896	-104.4030595	0.00	
9623.00†	90.000	87.975	6295.00	3072.55	801.40	2974.69	3305924.09	1364369.52	40.3283993	-104.4027010	0.00	
9723.00†	90.000	87.975	6295.00	3171.36	804.94	3074.63	3306023.98	1364374.28	40.3284090	-104.4023426	0.00	
9823.00†	90.000	87.975	6295.00	3270.16	808.47	3174.57	3306123.86	1364379.03	40.3284186	-104.4019841	0.00	
9923.00†	90.000	87.975	6295.00	3368.96	812.01	3274.51	3306223.74	1364383.79	40.3284283	-104.4016257	0.00	
10023.00†	90.000	87.975	6295.00	3467.77	815.54	3374.44	3306323.62	1364388.55	40.3284380	-104.4012673	0.00	
10123.00†	90.000	87.975	6295.00	3566.57	819.07	3474.38	3306423.51	1364393.31	40.3284476	-104.4009088	0.00	
10223.00†	90.000	87.975	6295.00	3665.38	822.61	3574.32	3306523.39	1364398.07	40.3284573	-104.4005504	0.00	
10323.00†	90.000	87.975	6295.00	3764.18	826.14	3674.26	3306623.27	1364402.82	40.3284670	-104.4001920	0.00	
10423.00†	90.000	87.975	6295.00	3862.98	829.67	3774.19	3306723.15	1364407.58	40.3284766	-104.3998335	0.00	
10523.00†	90.000	87.975	6295.00	3961.79	833.21	3874.13	3306823.03	1364412.34	40.3284863	-104.3994751	0.00	
10623.00†	90.000	87.975	6295.00	4060.59	836.74	3974.07	3306922.92	1364417.10	40.3284959	-104.3991167	0.00	
10723.00†	90.000	87.975	6295.00	4159.39	840.28	4074.01	3307022.80	1364421.86	40.3285056	-104.3987582	0.00	
10823.00†	90.000	87.975	6295.00	4258.20	843.81	4173.94	3307122.68	1364426.61	40.3285152	-104.3983998	0.00	
10923.00†	90.000	87.975	6295.00	4357.00	847.34	4273.88	3307222.56	1364431.37	40.3285249	-104.3980413	0.00	
11023.00†	90.000	87.975	6295.00	4455.81	850.88	4373.82	3307322.45	1364436.13	40.3285345	-104.3976829	0.00	
11079.61	90.000	87.975	6295.00 ²	4511.74	852.88	4430.39	3307378.99	1364438.82	40.3285400	-104.3974800	0.00	TD

HOLE & CASING SECTIONS

- Ref Wellbore: BIGFOOT 11-5-1 PWB Ref Wellpath: BIGFOOT 11-5-1 PWP Rev-B.0

String/Diameter	Start MD [ft]	End MD [ft]	Interval [ft]	Start TVD [ft]	End TVD [ft]	Start N/S [ft]	Start E/W [ft]	End N/S [ft]	End E/W [ft]
9.625in Casing Surface	23.00	1707.33	1684.33	23.00	1700.00	0.00	0.00	79.82	-63.31

TARGETS

Name	MD [ft]	TVD [ft]	North [ft]	East [ft]	Grid East [US ft]	Grid North [US ft]	Latitude	Longitude	Shape
SEC.11-T04N-R63W	N/A	-2.50	102.01	150.57	3303108.87	1363635.60	40.3264800	-104.4128300	polygon
2D Polygon: dimensions not calculated									
SEC.11-T04N-R63W 470' SETBACK	N/A	-2.50	102.01	150.57	3303108.87	1363635.60	40.3264800	-104.4128300	polygon
2D Polygon: dimensions not calculated									
2) BIGFOOT 11-5-1 BHL REV-1 (2174'FNL & 470'FEL,SEC.11)	11079.61	6295.00	852.88	4430.39	3307378.99	1364438.82	40.3285400	-104.3974800	point

TARGETS									
Name	MD [ft]	TVD [ft]	North [ft]	East [ft]	Grid East [US ft]	Grid North [US ft]	Latitude	Longitude	Shape
1) BIGFOOT 11-5-1 LP REV-1 (2174'FNL & 470'FWL,SEC.11)	6635.29	6295.00	695.83	-11.15	3302939.90	1364227.37	40.3281100	-104.4134100	point

SURVEY PROGRAM - Ref Wellbore: BIGFOOT 11-5-1 PWB					Ref Wellpath: BIGFOOT 11-5-1 PWP Rev-B.0				
Start MD [ft]	End MD [ft]	Positional Uncertainty Model				Log Name/Comment		Wellbore	
23.00	1707.33	BH NaviTrak (2019) (Standard)						BIGFOOT 11-5-1 PWB	
1707.33	11079.61	BH AutoTrak Curve/eXpress (2019) (Short spacing)						BIGFOOT 11-5-1 PWB	



Planned Wellpath Report

BIGFOOT 11-5-1 PWP Rev-B.0

Page 6 of 6



REFERENCE WELLPATH IDENTIFICATION

Operator	CONFLUENCE RESOURCES	Well	BIGFOOT 11-5-1
Field	WELD COUNTY (NAD83, TRUE NORTH)	API/Legal	
Facility	SEC.11-T04N-R63W	Wellbore	BIGFOOT 11-5-1 PWB
Slot	SLOT#17 BIGFOOT 11-5-1 (2356'FSL & 470'FWL,SEC.11)		

DESIGN COMMENTS

MD [ft]	Inclination [°]	Azimuth [°]	TVD [ft]	Comment
23.00	0.000	321.580	23.00	Tie On
850.00	0.000	321.580	850.00	End of Tangent
1321.10	9.422	321.580	1318.98	End of Build (J)
1707.33	9.422	321.580	1700.00	End of Tangent (J)
1807.33	9.422	321.580	1798.65	End of Tangent
5838.84	9.422	321.580	5775.77	KOP
6635.29	90.000	87.975	6295.00	LANDING
11079.61	90.000	87.975	6295.00	TD



Closest Approach Clearance Summary Report

BIGFOOT 11-5-1 PWP Rev-B.0 - SPE WPTS Stop
Drilling HSE Risk (2017)
Page 1 of 3



REFERENCE WELLPATH IDENTIFICATION			
Operator	CONFLUENCE RESOURCES	Well	BIGFOOT 11-5-1
Field	WELD COUNTY (NAD83, TRUE NORTH)	API/Legal	
Facility	SEC.11-T04N-R63W	Wellbore	BIGFOOT 11-5-1 PWB
Slot	SLOT#17 BIGFOOT 11-5-1 (2356'FSL & 470'FWL,SEC.11)		

REPORT SETUP INFORMATION			
Projection System	NAD83 / Lambert Colorado SP, Northern Zone (501), US feet	Software System	WellArchitect® 6.0
North Reference	True	User	Painsetr
Scale	0.999958	Report Generated	4/26/2022 at 3:39:04 PM
Convergence at slot	0.70° East	Database	WellArchitectDB

WELLPATH LOCATION						
	Local coordinates		Grid coordinates		Geographic coordinates	
	North[ft]	East[ft]	Easting[US ft]	Northing[US ft]	Latitude	Longitude
Slot Location	-102.01	-150.57	3302959.58	1363531.76	40.3262000°	-104.4133700°
Facility Reference Pt			3303108.87	1363635.60	40.3264800°	-104.4128300°
Field Reference Pt			3230456.90	1245096.09	40.0032400°	-104.6773400°

WELLPATH DATUM			
Calculation method	Minimum Curvature	Rig (23') (KB) to Facility Vertical Datum	4639.00ft
Horizontal Reference Pt	Slot	Rig (23') (KB) to Mean Sea Level	4639.00ft
Vertical Reference Pt	Rig (23') (KB)	Rig (23') (KB) to Ground Level at Slot (SLOT#17 BIGFOOT 11-5-1 (2356'FSL & 470'FWL,SEC.11))	23.00ft
MD Reference Pt	Rig (23') (KB)		
Field Vertical Reference	Mean Sea Level		

POSITIONAL UNCERTAINTY CALCULATION SETTINGS					
Ellipse Confidence Limit	3.50 Std Dev	Ellipse Start MD	23.00ft	Surface Position Uncertainty	included
Declination	7.76° East of TN	Dip Angle	66.72°	Mag Field Strength	51850 nT
Slot Surface Uncertainty @1SD		Horizontal	0.100ft	Vertical	1.000ft
Facility Surface Uncertainty @1SD		Horizontal	8.200ft	Vertical	3.000ft
Positional Uncertainty values in the WELLPATH DATA table are the projection of the ellipsoid of uncertainty onto the vertical and horizontal planes					



Closest Approach Clearance Summary Report

BIGFOOT 11-5-1 PWP Rev-B.0 - SPE WPTS Stop
Drilling HSE Risk (2017)
Page 2 of 3



REFERENCE WELLPATH IDENTIFICATION			
Operator	CONFLUENCE RESOURCES	Well	BIGFOOT 11-5-1
Field	WELD COUNTY (NAD83, TRUE NORTH)	API/Legal	
Facility	SEC.11-T04N-R63W	Wellbore	BIGFOOT 11-5-1 PWB
Slot	SLOT#17 BIGFOOT 11-5-1 (2356'FSL & 470'FWL,SEC.11)		

PROXIMITY-SCAN RULE			
Rule Name	SPE WPTS Stop Drilling HSE Risk (2017)	Rule Based On	Ratio
Plane of Rule	Closest Approach	Threshold Value	1.00
Include Casing & Hole Size	yes	Apply Cone of Safety	no

HOLE & CASING SECTIONS									
- Ref Wellbore: BIGFOOT 11-5-1 PWB Ref Wellpath: BIGFOOT 11-5-1 PWP Rev-B.0									
String/Diameter	Start MD [ft]	End MD [ft]	Interval [ft]	Start TVD [ft]	End TVD [ft]	Start N/S [ft]	Start E/W [ft]	End N/S [ft]	End E/W [ft]
9.625in Casing Surface	23.00	1707.33	1684.33	23.00	1700.00	0.00	0.00	79.82	-63.31

SURVEY PROGRAM - Ref Wellbore: BIGFOOT 11-5-1 PWB Ref Wellpath: BIGFOOT 11-5-1 PWP Rev-B.0				
Start MD [ft]	End MD [ft]	Positional Uncertainty Model	Log Name/Comment	Wellbore
23.00	1707.33	BH NaviTrak (2019) (Standard)		BIGFOOT 11-5-1 PWB
1707.33	11079.61	BH AutoTrak Curve/eXpress (2019) (Short spacing)		BIGFOOT 11-5-1 PWB



Closest Approach Clearance Summary Report

**BIGFOOT 11-5-1 PWP Rev-B.0 - SPE WPTS Stop
Drilling HSE Risk (2017)**
Page 3 of 3



REFERENCE WELLPATH IDENTIFICATION			
Operator	CONFLUENCE RESOURCES	Well	BIGFOOT 11-5-1
Field	WELD COUNTY (NAD83, TRUE NORTH)	API/Legal	
Facility	SEC.11-T04N-R63W	Wellbore	BIGFOOT 11-5-1 PWB
Slot	SLOT#17 BIGFOOT 11-5-1 (2356'FSL & 470'FWL,SEC.11)		

CALCULATION RANGE & CUTOFF		
From: 23.00ft MD	To: 11079.61ft MD	C-C Cutoff: (none)

OFFSET WELL CLEARANCE SUMMARY (17 Offset Wellpaths selected) Ratios are calculated in Closest Approach plane												
Offset Facility	Offset Slot	Offset Well	Offset Wellbore	Offset Wellpath	Wellbore Status	C-C Clearance Distance			Rule Separation Ratio			
						Ref MD [ft]	Min C-C Clear Dist [ft]	Diverging from MD [ft]	Ref MD of Min Ratio [ft]	Min Ratio	Min Ratio Dvrg from [ft]	Rule Status
SEC.11-T04N-R63W	SLOT#16 BIGFOOT 11-4-3 (2381'FSL & 470'FWL,SEC.11)	BIGFOOT 11-4-3	BIGFOOT 11-4-3 PWB	BIGFOOT 11-4-3 PWP Rev-B.0	Planned	23.00	25.50	11079.61	11079.61	0.87	11079.61	FAIL
SEC.11-T04N-R63W	SLOT#19 BIGFOOT 11-6-2 (2306'FSL & 470'FWL,SEC.11)	BIGFOOT 11-6-2	BIGFOOT 11-6-2 PWB	BIGFOOT 11-6-2 PWP Rev-B.0	Planned	23.00	51.08	850.00	11067.83	1.06	11067.83	WARN
SEC.11-T04N-R63W	SLOT#18 BIGFOOT 11-3-4 (2331'FSL & 470'FWL,SEC.11)	BIGFOOT 11-3-4	BIGFOOT 11-3-4 PWB	BIGFOOT 11-3-4 PWP Rev-B.0	Planned	23.00	25.65	6635.29	11073.18	1.26	11073.18	PASS
SEC.11-T04N-R63W	SLOT#15 BIGFOOT 11-3-2 (2406'FSL & 470'FWL,SEC.11)	BIGFOOT 11-3-2	BIGFOOT 11-3-2 PWB	BIGFOOT 11-3-2 PWP Rev-B.0	Planned	23.00	51.00	11079.61	11079.61	1.54	11079.61	PASS
SEC.11-T04N-R63W	SLOT#20 BIGFOOT 11-7-3 (2281'FSL & 470'FWL,SEC.11)	BIGFOOT 11-7-3	BIGFOOT 11-7-3 PWB	BIGFOOT 11-7-3 PWP Rev-B.0	Planned	23.00	72.91	850.00	11075.42	1.92	11075.42	PASS
SEC.11-T04N-R63W	SLOT#14 BIGFOOT 11-2-4 (2431'FSL & 470'FWL,SEC.11)	BIGFOOT 11-2-4	BIGFOOT 11-2-4 PWB	BIGFOOT 11-2-4 PWP Rev-B.0	Planned	23.00	76.50	11079.61	11079.61	2.32	11079.61	PASS
SEC.11-T04N-R63W	SLOT#01 BIGFOOT 11-8-1 (2455'FSL & 620'FWL,SEC.11)	BIGFOOT 11-8-1	BIGFOOT 11-8-1 PWB	BIGFOOT 11-8-1 PWP Rev-B.0	Planned	1730.19	148.87	1730.19	11079.61	2.65	11079.61	PASS
SEC.10-T04N-R63W	SLOT#02 70 RANCH 10-11-2 (2360'FNL & 514'FEL, SEC.10)	70 RANCH 10-11-2	70 RANCH 10-11-2 AWB	70 RANCH 10-11-2 AWP	Drilling	3690.53	854.45	11079.61	11079.61	3.18	11079.61	PASS
SEC.11-T04N-R63W	SLOT#02 BIGFOOT 11-4-4 (2430'FSL & 620'FWL,SEC.11)	BIGFOOT 11-4-4	BIGFOOT 11-4-4 PWB	BIGFOOT 11-4-4 PWP Rev-B.0	Planned	1583.69	147.58	1583.69	11079.61	3.21	11079.61	PASS
SEC.11-T04N-R63W	SLOT#03 BIGFOOT 11-9-2 (2405'FSL & 620'FWL,SEC.11)	BIGFOOT 11-9-2	BIGFOOT 11-9-2 PWB	BIGFOOT 11-9-2 PWP Rev-B.0	Planned	1372.21	151.64	1372.21	11079.61	3.68	11079.61	PASS
SEC.10-T04N-R63W	SLOT#01 70 RANCH 10-11-1 (2345'FNL & 514'FEL, SEC.10)	70 RANCH 10-11-1	70 RANCH 10-11-1 AWB	70 RANCH 10-11-1 AWP	Drilling	4123.06	903.15	11079.61	11079.61	4.42	11079.61	PASS
SEC.11-T04N-R63W	SLOT#04 BIGFOOT 11-10-3 (2380'FSL & 620'FWL,SEC.11)	BIGFOOT 11-10-3	BIGFOOT 11-10-3 PWB	BIGFOOT 11-10-3 PWP Rev-B.0	Planned	1161.59	150.81	1161.59	11079.61	4.52	11079.61	PASS
SEC.11-T04N-R63W	SLOT#13 BIGFOOT 11-1-4 (2456'FSL & 470'FWL,SEC.11)	BIGFOOT 11-1-4	BIGFOOT 11-1-4 PWB	BIGFOOT 11-1-4 PWP Rev-B.0	Planned	23.00	102.01	11079.61	11079.61	5.05	11079.61	PASS
SEC.11-T04N-R63W	SLOT#05 BIGFOOT 11-11-1 (2355'FSL & 620'FWL,SEC.11)	BIGFOOT 11-11-1	BIGFOOT 11-11-1 PWB	BIGFOOT 11-11-1 PWP Rev-B.0	Planned	960.57	149.88	960.57	11079.61	5.30	11079.61	PASS
SEC.11-T04N-R63W	SLOT#06 BIGFOOT 11-5-4 (2330'FSL & 620'FWL,SEC.11)	BIGFOOT 11-5-4	BIGFOOT 11-5-4 PWB	BIGFOOT 11-5-4 PWP Rev-B.0	Planned	898.21	151.46	898.21	11079.61	5.78	11079.61	PASS

OFFSET WELL CLEARANCE SUMMARY (17 Offset Wellpaths selected) Ratios are calculated in Closest Approach plane												
Offset Facility	Offset Slot	Offset Well	Offset Wellbore	Offset Wellpath	Wellbore Status	C-C Clearance Distance			Rule Separation Ratio			
						Ref MD [ft]	Min C-C Clear Dist [ft]	Diverging from MD [ft]	Ref MD of Min Ratio [ft]	Min Ratio	Min Ratio Dvrg from [ft]	Rule Status
SEC.11-T04N-R63W	SLOT#07 BIGFOOT 11-12-2 (2305'FSL & 620'FWL,SEC.11)	BIGFOOT 11-12-2	BIGFOOT 11-12-2 PWB	BIGFOOT 11-12-2 PWP Rev-B.0	Planned	868.51	159.73	868.51	11079.61	6.32	11079.61	PASS
SEC.11-T04N-R63W	SLOT#08 BIGFOOT 11-13-3 (2280'FSL & 620'FWL,SEC.11)	BIGFOOT 11-13-3	BIGFOOT 11-13-3 PWB	BIGFOOT 11-13-3 PWP Rev-B.0	Planned	23.00	169.78	523.00	11079.61	7.15	11079.61	PASS