

CONFLUENCE RESOURCES



Location: COLORADO Slot: SLOT#18 BIGFOOT 11-3-4 (2331'FSL & 470'FWL,SEC.11)

Field: WELD COUNTY (NAD83, TRUE NORTH) Well: BIGFOOT 11-3-4

Facility: SEC.11-T04N-R63W Wellbore: BIGFOOT 11-3-4 PWB

Plot reference wellpath is BIGFOOT 11-3-4 PWP RevB.0

True vertical depths are referenced to Rig (23) (KB)

Reference wellpath measured depths are referenced to Rig (23) (KB)

Rig (23) (KB) to Mean Sea Level: 4639 feet

Mean Sea Level to Ground level (At Slot: SLOT#18 BIGFOOT 11-3-4 (2331'FSL & 470'FWL,SEC.11)): -4616 feet

Offset wellpath MDs are referenced to each path's default MD datum

Grid System: NAD83 / Lambert Colorado SP, Northern Zone (501), US feet

North Reference: True north

Scale: True distance

Coordinates are in feet referenced to Slot

Depths are in feet

Created by: painseir on 2022-04-26; Database: WellArchitectDB

Location Information

Facility Name				Grid East (US ft)	Grid North (US ft)	Latitude	Longitude
SEC.11-T04N-R63W				3303108.873	1363635.600	40°19'35.3280"N	104°24'46.1880"W
Slot	Local N (ft)	Local E (ft)		Grid East (US ft)	Grid North (US ft)	Latitude	Longitude
SLOT#18 BIGFOOT 11-3-4 (2331'FSL & 470'FWL,SEC.11)	-127.51	-147.78		3302962.676	1363506.297	40°19'34.0680"N	104°24'48.0960"W
Rig (23) (KB) to Ground level (At Slot: SLOT#18 BIGFOOT 11-3-4 (2331'FSL & 470'FWL,SEC.11))				23ft			
Mean Sea Level to Ground level (At Slot: SLOT#18 BIGFOOT 11-3-4 (2331'FSL & 470'FWL,SEC.11))				-4616ft			
Rig (23) (KB) to Mean Sea Level				4639ft			

Hole and Casing Sections

Name	Start MD (ft)	End MD (ft)	Interval (ft)	Start TVD (ft)	End TVD (ft)	Start Local N (ft)	Start Local E (ft)	End Local N (ft)	End Local E (ft)	Wellbore
9.625in Casing Surface	23.00	1705.93	1682.93	23.00	1700.00	0.00	0.00	54.94	-70.03	BIGFOOT 11-3-4 PWB

Survey Program

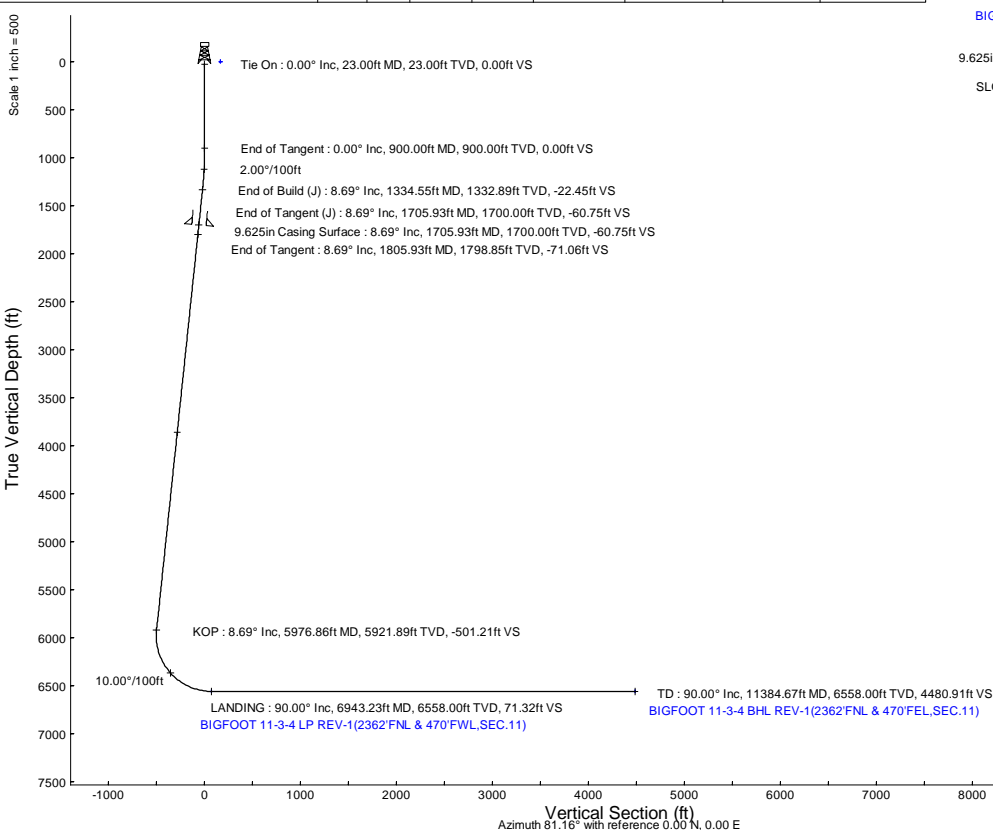
Start MD (ft)	End MD (ft)	Tool	Model	Log Name/Comment	Wellbore
23.00	1705.93	BH NavTrak (2019)	BH NavTrak (2019) (Standard)		BIGFOOT 11-3-4 PWB
1705.93	11384.67	BH AutoTrak Curve/Express (2019)	BH AutoTrak Curve/Express (2019) (Short spacing)		BIGFOOT 11-3-4 PWB

Bottom Hole Location

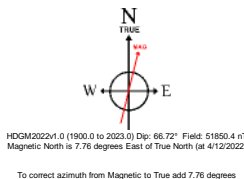
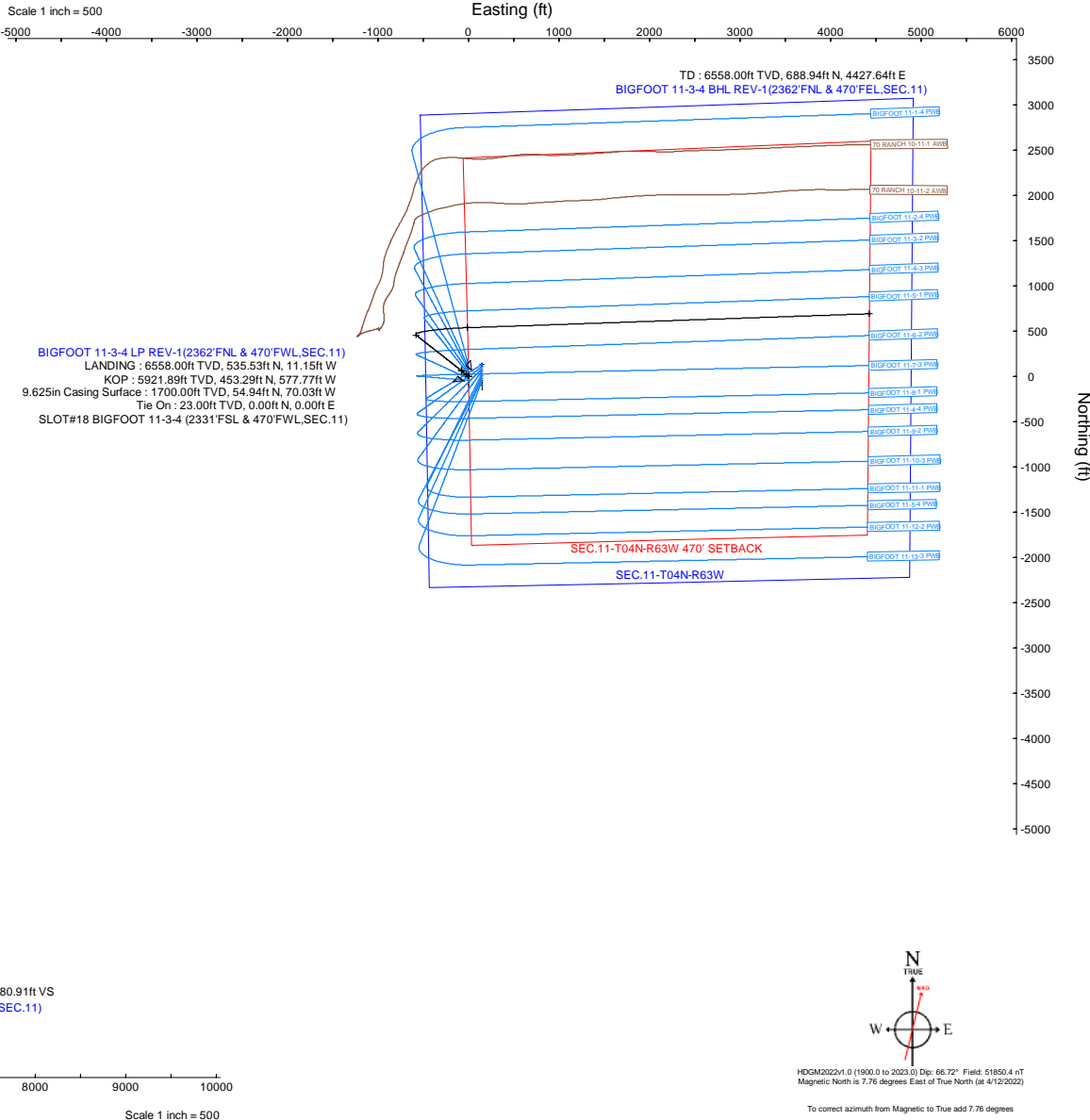
MD (ft)	Inc (°)	Az (°)	TVD (ft)	Local N (ft)	Local E (ft)	Grid East (US ft)	Grid North (US ft)	Latitude	Longitude
11384.67	90.000	88.021	6558.00	688.94	4427.64	3307381.34	1364249.41	40°19'40.8720"N	104°23'50.9280"W

Targets

Name	MD (ft)	TVD (ft)	Local N (ft)	Local E (ft)	Grid East (US ft)	Grid North (US ft)	Latitude	Longitude
SEC.11-T04N-R63W	N/A	-2.50	127.51	147.78	3303108.87	1363635.60	40°19'35.3280"N	104°24'46.1880"W
SEC.11-T04N-R63W 470' SETBACK	N/A	-2.50	127.51	147.78	3303108.87	1363635.60	40°19'35.3280"N	104°24'46.1880"W
BIGFOOT 11-3-4 BHL REV-1(2362'FNL & 470'FEL,SEC.11)	11384.67	6558.00	688.94	4427.64	3307381.34	1364249.41	40°19'40.8720"N	104°23'50.9280"W
BIGFOOT 11-3-4 LP REV-1(2362'FNL & 470'FWL,SEC.11)	6943.23	6558.00	535.53	-11.15	3302944.96	1364041.63	40°19'39.3600"N	104°24'48.2400"W



Well Profile Data								
Design Comment	MD (ft)	Inc (°)	Az (°)	TVD (ft)	Local N (ft)	Local E (ft)	DLS (°/100ft)	VS (ft)
Tie On	23.00	0.000	308.116	23.00	0.00	0.00	0.00	0.00
End of Tangent	900.00	0.000	308.116	900.00	0.00	0.00	0.00	0.00
End of Build (J)	1334.55	8.691	308.116	1332.89	20.30	-25.88	2.00	-22.45
End of Tangent (J)	1705.93	8.691	308.116	1700.00	54.94	-70.03	0.00	-60.75
End of Tangent	1805.93	8.691	308.116	1798.85	64.27	-81.92	0.00	-71.06
KOP	5976.86	8.691	308.116	5921.89	453.29	-577.77	0.00	-501.21
LANDING	6943.23	90.000	88.021	6558.00	535.53	-11.15	10.00	71.32
TD	11384.67	90.000	88.021	6558.00	688.94	4427.64	0.00	4480.91



HDM2022v4.0 (1900.0 to 2023.0) Dip: 66.72° Field: 51850.4 nT  
Magnetic North is 7.76 degrees East of True North (at 4/12/2022)

To correct azimuth from Magnetic to True add 7.76 degrees



# Planned Wellpath Report

BIGFOOT 11-3-4 PWP Rev-B.0

Page 1 of 8



## REFERENCE WELLPATH IDENTIFICATION

Operator	CONFLUENCE RESOURCES	Well	BIGFOOT 11-3-4
Field	WELD COUNTY (NAD83, TRUE NORTH)	API/Legal	
Facility	SEC.11-T04N-R63W	Wellbore	BIGFOOT 11-3-4 PWB
Slot	SLOT#18 BIGFOOT 11-3-4 (2331'FSL & 470'FWL,SEC.11)		

## REPORT SETUP INFORMATION

Projection System	NAD83 / Lambert Colorado SP, Northern Zone (501), US feet	Software System	WellArchitect® 6.0
North Reference	True	User	Painsetr
Scale	0.999958	Report Generated	4/26/2022 at 3:42:37 PM
Convergence at slot	0.70° East	Database	WellArchitectDB

## WELLPATH LOCATION

	Local coordinates		Grid coordinates		Geographic coordinates	
	North[ft]	East[ft]	Easting[US ft]	Northing[US ft]	Latitude	Longitude
Slot Location	-127.51	-147.78	3302962.68	1363506.30	40.3261300°	-104.4133600°
Facility Reference Pt			3303108.87	1363635.60	40.3264800°	-104.4128300°
Field Reference Pt			3230456.90	1245096.09	40.0032400°	-104.6773400°

## WELLPATH DATUM

Calculation method	Minimum curvature	Rig (23') (KB) to Facility Vertical Datum	4639.00ft
Horizontal Reference Pt	Slot	Rig (23') (KB) to Mean Sea Level	4639.00ft
Vertical Reference Pt	Rig (23') (KB)	Rig (23') (KB) to Ground Level at Slot (SLOT#18 BIGFOOT 11-3-4 (2331'FSL & 470'FWL,SEC.11))	23.00ft
MD Reference Pt	Rig (23') (KB)	Section Origin	N 0.00, E 0.00 ft
Field Vertical Reference	Mean Sea Level	Section Azimuth	81.16°

# Planned Wellpath Report

BIGFOOT 11-3-4 PWP Rev-B.0

Page 2 of 8

## REFERENCE WELLPATH IDENTIFICATION

Operator	CONFLUENCE RESOURCES	Well	BIGFOOT 11-3-4
Field	WELD COUNTY (NAD83, TRUE NORTH)	API/Legal	
Facility	SEC.11-T04N-R63W	Wellbore	BIGFOOT 11-3-4 PWB
Slot	SLOT#18 BIGFOOT 11-3-4 (2331'FSL & 470'FWL,SEC.11)		

## WELLPATH DATA (122 stations) † = interpolated, ‡ = extrapolated station

MD [ft]	Inclination [°]	Azimuth [°]	TVD [ft]	Vert Sect [ft]	North [ft]	East [ft]	Grid East [US ft]	Grid North [US ft]	Latitude	Longitude	DLS [°/100ft]	Comments
0.00†	0.000	308.116	0.00	0.00	0.00	0.00	3302962.68	1363506.30	40.3261300	-104.4133600	0.00	
23.00	0.000	308.116	23.00	0.00	0.00	0.00	3302962.68	1363506.30	40.3261300	-104.4133600	0.00	Tie On
123.00†	0.000	308.116	123.00	0.00	0.00	0.00	3302962.68	1363506.30	40.3261300	-104.4133600	0.00	
223.00†	0.000	308.116	223.00	0.00	0.00	0.00	3302962.68	1363506.30	40.3261300	-104.4133600	0.00	
323.00†	0.000	308.116	323.00	0.00	0.00	0.00	3302962.68	1363506.30	40.3261300	-104.4133600	0.00	
423.00†	0.000	308.116	423.00	0.00	0.00	0.00	3302962.68	1363506.30	40.3261300	-104.4133600	0.00	
523.00†	0.000	308.116	523.00	0.00	0.00	0.00	3302962.68	1363506.30	40.3261300	-104.4133600	0.00	
623.00†	0.000	308.116	623.00	0.00	0.00	0.00	3302962.68	1363506.30	40.3261300	-104.4133600	0.00	
723.00†	0.000	308.116	723.00	0.00	0.00	0.00	3302962.68	1363506.30	40.3261300	-104.4133600	0.00	
823.00†	0.000	308.116	823.00	0.00	0.00	0.00	3302962.68	1363506.30	40.3261300	-104.4133600	0.00	
900.00	0.000	308.116	900.00	0.00	0.00	0.00	3302962.68	1363506.30	40.3261300	-104.4133600	0.00	End of Tangent
923.00†	0.460	308.116	923.00	-0.06	0.06	-0.07	3302962.60	1363506.35	40.3261302	-104.4133603	2.00	
1023.00†	2.460	308.116	1022.96	-1.80	1.63	-2.08	3302960.58	1363507.90	40.3261345	-104.4133674	2.00	
1123.00†	4.460	308.116	1122.77	-5.92	5.35	-6.83	3302955.79	1363511.57	40.3261447	-104.4133845	2.00	
1223.00†	6.460	308.116	1222.32	-12.41	11.23	-14.31	3302948.23	1363517.35	40.3261608	-104.4134113	2.00	
1323.00†	8.460	308.116	1321.46	-21.28	19.24	-24.53	3302937.92	1363525.23	40.3261828	-104.4134480	2.00	
1334.55	8.691	308.116	1332.89	-22.45	20.30	-25.88	3302936.55	1363526.28	40.3261857	-104.4134528	2.00	End of Build (J)
1423.00†	8.691	308.116	1420.32	-31.57	28.55	-36.40	3302925.94	1363534.40	40.3262084	-104.4134905	0.00	
1523.00†	8.691	308.116	1519.17	-41.89	37.88	-48.28	3302913.93	1363543.58	40.3262340	-104.4135332	0.00	
1623.00†	8.691	308.116	1618.02	-52.20	47.21	-60.17	3302901.93	1363552.76	40.3262596	-104.4135758	0.00	
1705.93	8.691	308.116	1700.00	-60.75	54.94	-70.03	3302891.98	1363560.37	40.3262808	-104.4136112	0.00	End of Tangent (J)
1723.00†	8.691	308.116	1716.88	-62.51	56.54	-72.06	3302889.93	1363561.94	40.3262852	-104.4136184	0.00	
1805.93	8.691	308.116	1798.85	-71.06	64.27	-81.92	3302879.98	1363569.56	40.3263064	-104.4136538	0.00	End of Tangent
1823.00†	8.691	308.116	1815.73	-72.82	65.86	-83.95	3302877.93	1363571.12	40.3263108	-104.4136611	0.00	
1923.00†	8.691	308.116	1914.58	-83.14	75.19	-95.84	3302865.93	1363580.30	40.3263364	-104.4137037	0.00	
2023.00†	8.691	308.116	2013.43	-93.45	84.52	-107.73	3302853.93	1363589.48	40.3263620	-104.4137464	0.00	
2123.00†	8.691	308.116	2112.28	-103.76	93.84	-119.61	3302841.93	1363598.66	40.3263876	-104.4137890	0.00	
2223.00†	8.691	308.116	2211.13	-114.08	103.17	-131.50	3302829.92	1363607.84	40.3264132	-104.4138316	0.00	
2323.00†	8.691	308.116	2309.99	-124.39	112.50	-143.39	3302817.92	1363617.02	40.3264388	-104.4138743	0.00	
2423.00†	8.691	308.116	2408.84	-134.70	121.82	-155.28	3302805.92	1363626.20	40.3264644	-104.4139169	0.00	

# Planned Wellpath Report

BIGFOOT 11-3-4 PWP Rev-B.0

Page 3 of 8

## REFERENCE WELLPATH IDENTIFICATION

Operator	CONFLUENCE RESOURCES	Well	BIGFOOT 11-3-4
Field	WELD COUNTY (NAD83, TRUE NORTH)	API/Legal	
Facility	SEC.11-T04N-R63W	Wellbore	BIGFOOT 11-3-4 PWB
Slot	SLOT#18 BIGFOOT 11-3-4 (2331'FSL & 470'FWL,SEC.11)		

## WELLPATH DATA (122 stations) † = interpolated, ‡ = extrapolated station

MD [ft]	Inclination [°]	Azimuth [°]	TVD [ft]	Vert Sect [ft]	North [ft]	East [ft]	Grid East [US ft]	Grid North [US ft]	Latitude	Longitude	DLS [°/100ft]	Comments
2523.00†	8.691	308.116	2507.69	-145.02	131.15	-167.17	3302793.92	1363635.38	40.3264900	-104.4139595	0.00	
2623.00†	8.691	308.116	2606.54	-155.33	140.48	-179.06	3302781.92	1363644.56	40.3265156	-104.4140022	0.00	
2723.00†	8.691	308.116	2705.39	-165.64	149.81	-190.94	3302769.92	1363653.74	40.3265412	-104.4140448	0.00	
2823.00†	8.691	308.116	2804.24	-175.95	159.13	-202.83	3302757.92	1363662.93	40.3265668	-104.4140875	0.00	
2923.00†	8.691	308.116	2903.10	-186.27	168.46	-214.72	3302745.92	1363672.11	40.3265924	-104.4141301	0.00	
3023.00†	8.691	308.116	3001.95	-196.58	177.79	-226.61	3302733.91	1363681.29	40.3266180	-104.4141727	0.00	
3123.00†	8.691	308.116	3100.80	-206.89	187.11	-238.50	3302721.91	1363690.47	40.3266436	-104.4142154	0.00	
3223.00†	8.691	308.116	3199.65	-217.21	196.44	-250.39	3302709.91	1363699.65	40.3266692	-104.4142580	0.00	
3323.00†	8.691	308.116	3298.50	-227.52	205.77	-262.27	3302697.91	1363708.83	40.3266948	-104.4143006	0.00	
3423.00†	8.691	308.116	3397.36	-237.83	215.10	-274.16	3302685.91	1363718.01	40.3267204	-104.4143433	0.00	
3523.00†	8.691	308.116	3496.21	-248.15	224.42	-286.05	3302673.91	1363727.19	40.3267460	-104.4143859	0.00	
3623.00†	8.691	308.116	3595.06	-258.46	233.75	-297.94	3302661.91	1363736.37	40.3267716	-104.4144286	0.00	
3723.00†	8.691	308.116	3693.91	-268.77	243.08	-309.83	3302649.91	1363745.55	40.3267972	-104.4144712	0.00	
3823.00†	8.691	308.116	3792.76	-279.08	252.40	-321.72	3302637.91	1363754.73	40.3268228	-104.4145138	0.00	
3923.00†	8.691	308.116	3891.61	-289.40	261.73	-333.60	3302625.90	1363763.91	40.3268484	-104.4145565	0.00	
4023.00†	8.691	308.116	3990.47	-299.71	271.06	-345.49	3302613.90	1363773.09	40.3268740	-104.4145991	0.00	
4123.00†	8.691	308.116	4089.32	-310.02	280.38	-357.38	3302601.90	1363782.27	40.3268996	-104.4146417	0.00	
4223.00†	8.691	308.116	4188.17	-320.34	289.71	-369.27	3302589.90	1363791.45	40.3269252	-104.4146844	0.00	
4323.00†	8.691	308.116	4287.02	-330.65	299.04	-381.16	3302577.90	1363800.63	40.3269508	-104.4147270	0.00	
4423.00†	8.691	308.116	4385.87	-340.96	308.36	-393.05	3302565.90	1363809.81	40.3269764	-104.4147697	0.00	
4523.00†	8.691	308.116	4484.72	-351.27	317.69	-404.93	3302553.90	1363818.99	40.3270020	-104.4148123	0.00	
4623.00†	8.691	308.116	4583.58	-361.59	327.02	-416.82	3302541.90	1363828.17	40.3270276	-104.4148549	0.00	
4723.00†	8.691	308.116	4682.43	-371.90	336.35	-428.71	3302529.90	1363837.35	40.3270532	-104.4148976	0.00	
4823.00†	8.691	308.116	4781.28	-382.21	345.67	-440.60	3302517.89	1363846.53	40.3270788	-104.4149402	0.00	
4923.00†	8.691	308.116	4880.13	-392.53	355.00	-452.49	3302505.89	1363855.71	40.3271044	-104.4149829	0.00	
5023.00†	8.691	308.116	4978.98	-402.84	364.33	-464.38	3302493.89	1363864.89	40.3271300	-104.4150255	0.00	
5123.00†	8.691	308.116	5077.84	-413.15	373.65	-476.26	3302481.89	1363874.07	40.3271556	-104.4150681	0.00	
5223.00†	8.691	308.116	5176.69	-423.47	382.98	-488.15	3302469.89	1363883.25	40.3271812	-104.4151108	0.00	
5323.00†	8.691	308.116	5275.54	-433.78	392.31	-500.04	3302457.89	1363892.43	40.3272068	-104.4151534	0.00	
5423.00†	8.691	308.116	5374.39	-444.09	401.63	-511.93	3302445.89	1363901.61	40.3272324	-104.4151960	0.00	

# Planned Wellpath Report

BIGFOOT 11-3-4 PWP Rev-B.0

Page 4 of 8

## REFERENCE WELLPATH IDENTIFICATION

Operator	CONFLUENCE RESOURCES	Well	BIGFOOT 11-3-4
Field	WELD COUNTY (NAD83, TRUE NORTH)	API/Legal	
Facility	SEC.11-T04N-R63W	Wellbore	BIGFOOT 11-3-4 PWB
Slot	SLOT#18 BIGFOOT 11-3-4 (2331'FSL & 470'FWL,SEC.11)		

## WELLPATH DATA (122 stations) † = interpolated, ‡ = extrapolated station

MD [ft]	Inclination [°]	Azimuth [°]	TVD [ft]	Vert Sect [ft]	North [ft]	East [ft]	Grid East [US ft]	Grid North [US ft]	Latitude	Longitude	DLS [°/100ft]	Comments
5523.00†	8.691	308.116	5473.24	-454.40	410.96	-523.82	3302433.89	1363910.79	40.3272580	-104.4152387	0.00	
5623.00†	8.691	308.116	5572.09	-464.72	420.29	-535.71	3302421.89	1363919.97	40.3272836	-104.4152813	0.00	
5723.00†	8.691	308.116	5670.95	-475.03	429.61	-547.59	3302409.88	1363929.15	40.3273092	-104.4153240	0.00	
5823.00†	8.691	308.116	5769.80	-485.34	438.94	-559.48	3302397.88	1363938.33	40.3273348	-104.4153666	0.00	
5923.00†	8.691	308.116	5868.65	-495.66	448.27	-571.37	3302385.88	1363947.51	40.3273604	-104.4154092	0.00	
5976.86	8.691	308.116	5921.89	-501.21	453.29	-577.77	3302379.42	1363952.45	40.3273742	-104.4154322	0.00	KOP
6023.00†	5.974	338.192	5967.67	-504.13	457.68	-581.41	3302375.73	1363956.79	40.3273863	-104.4154452	10.00	
6123.00†	9.749	53.059	6066.93	-497.81	467.62	-576.56	3302380.45	1363966.80	40.3274136	-104.4154279	10.00	
6223.00†	18.808	71.219	6163.78	-474.41	477.92	-554.48	3302402.41	1363977.37	40.3274419	-104.4153487	10.00	
6323.00†	28.491	77.570	6255.29	-434.62	488.27	-515.83	3302440.93	1363988.19	40.3274703	-104.4152100	10.00	
6423.00†	38.328	80.867	6338.67	-379.67	498.35	-461.78	3302494.84	1363998.93	40.3274979	-104.4150162	10.00	
6523.00†	48.225	82.975	6411.39	-311.22	507.86	-393.98	3302562.52	1364009.27	40.3275240	-104.4147730	10.00	
6623.00†	58.149	84.514	6471.23	-231.35	516.50	-314.50	3302641.89	1364018.88	40.3275478	-104.4144880	10.00	
6723.00†	68.088	85.751	6516.39	-142.48	524.02	-225.73	3302730.55	1364027.49	40.3275684	-104.4141696	10.00	
6823.00†	78.035	86.825	6545.49	-47.33	530.18	-130.39	3302825.80	1364034.81	40.3275853	-104.4138277	10.00	
6923.00†	87.986	87.822	6557.64	51.23	534.80	-31.37	3302924.76	1364040.65	40.3275980	-104.4134725	10.00	
6943.23	90.000	88.021	6558.00†	71.32	535.53	-11.15	3302944.96	1364041.63	40.3276000	-104.4134000	10.00	LANDING
7023.00†	90.000	88.021	6558.00	150.51	538.29	68.57	3303024.64	1364045.36	40.3276076	-104.4131141	0.00	
7123.00†	90.000	88.021	6558.00	249.80	541.74	168.51	3303124.52	1364050.04	40.3276170	-104.4127556	0.00	
7223.00†	90.000	88.021	6558.00	349.08	545.20	268.45	3303224.41	1364054.72	40.3276265	-104.4123972	0.00	
7323.00†	90.000	88.021	6558.00	448.36	548.65	368.39	3303324.30	1364059.39	40.3276360	-104.4120388	0.00	
7423.00†	90.000	88.021	6558.00	547.64	552.10	468.33	3303424.18	1364064.07	40.3276455	-104.4116803	0.00	
7523.00†	90.000	88.021	6558.00	646.93	555.56	568.27	3303524.07	1364068.75	40.3276549	-104.4113219	0.00	
7623.00†	90.000	88.021	6558.00	746.21	559.01	668.21	3303623.96	1364073.43	40.3276644	-104.4109634	0.00	
7723.00†	90.000	88.021	6558.00	845.49	562.46	768.15	3303723.84	1364078.11	40.3276739	-104.4106050	0.00	
7823.00†	90.000	88.021	6558.00	944.78	565.92	868.09	3303823.73	1364082.78	40.3276834	-104.4102466	0.00	
7923.00†	90.000	88.021	6558.00	1044.06	569.37	968.03	3303923.61	1364087.46	40.3276928	-104.4098881	0.00	
8023.00†	90.000	88.021	6558.00	1143.34	572.83	1067.97	3304023.50	1364092.14	40.3277023	-104.4095297	0.00	
8123.00†	90.000	88.021	6558.00	1242.63	576.28	1167.91	3304123.39	1364096.82	40.3277118	-104.4091712	0.00	
8223.00†	90.000	88.021	6558.00	1341.91	579.73	1267.85	3304223.27	1364101.50	40.3277212	-104.4088128	0.00	

# Planned Wellpath Report

BIGFOOT 11-3-4 PWP Rev-B.0

Page 5 of 8

## REFERENCE WELLPATH IDENTIFICATION

Operator	CONFLUENCE RESOURCES	Well	BIGFOOT 11-3-4
Field	WELD COUNTY (NAD83, TRUE NORTH)	API/Legal	
Facility	SEC.11-T04N-R63W	Wellbore	BIGFOOT 11-3-4 PWB
Slot	SLOT#18 BIGFOOT 11-3-4 (2331'FSL & 470'FWL,SEC.11)		

## WELLPATH DATA (122 stations) † = interpolated, ‡ = extrapolated station

MD [ft]	Inclination [°]	Azimuth [°]	TVD [ft]	Vert Sect [ft]	North [ft]	East [ft]	Grid East [US ft]	Grid North [US ft]	Latitude	Longitude	DLS [°/100ft]	Comments
8323.00†	90.000	88.021	6558.00	1441.19	583.19	1367.79	3304323.16	1364106.18	40.3277307	-104.4084544	0.00	
8423.00†	90.000	88.021	6558.00	1540.48	586.64	1467.73	3304423.04	1364110.85	40.3277402	-104.4080959	0.00	
8523.00†	90.000	88.021	6558.00	1639.76	590.10	1567.67	3304522.93	1364115.53	40.3277496	-104.4077375	0.00	
8623.00†	90.000	88.021	6558.00	1739.04	593.55	1667.61	3304622.82	1364120.21	40.3277591	-104.4073790	0.00	
8723.00†	90.000	88.021	6558.00	1838.32	597.00	1767.55	3304722.70	1364124.89	40.3277686	-104.4070206	0.00	
8823.00†	90.000	88.021	6558.00	1937.61	600.46	1867.49	3304822.59	1364129.57	40.3277780	-104.4066621	0.00	
8923.00†	90.000	88.021	6558.00	2036.89	603.91	1967.43	3304922.47	1364134.24	40.3277875	-104.4063037	0.00	
9023.00†	90.000	88.021	6558.00	2136.17	607.37	2067.37	3305022.36	1364138.92	40.3277969	-104.4059453	0.00	
9123.00†	90.000	88.021	6558.00	2235.46	610.82	2167.31	3305122.25	1364143.60	40.3278064	-104.4055868	0.00	
9223.00†	90.000	88.021	6558.00	2334.74	614.27	2267.25	3305222.13	1364148.28	40.3278159	-104.4052284	0.00	
9323.00†	90.000	88.021	6558.00	2434.02	617.73	2367.19	3305322.02	1364152.96	40.3278253	-104.4048699	0.00	
9423.00†	90.000	88.021	6558.00	2533.31	621.18	2467.13	3305421.90	1364157.64	40.3278348	-104.4045115	0.00	
9523.00†	90.000	88.021	6558.00	2632.59	624.64	2567.07	3305521.79	1364162.31	40.3278442	-104.4041530	0.00	
9623.00†	90.000	88.021	6558.00	2731.87	628.09	2667.02	3305621.68	1364166.99	40.3278537	-104.4037946	0.00	
9723.00†	90.000	88.021	6558.00	2831.16	631.54	2766.96	3305721.56	1364171.67	40.3278631	-104.4034362	0.00	
9823.00†	90.000	88.021	6558.00	2930.44	635.00	2866.90	3305821.45	1364176.35	40.3278726	-104.4030777	0.00	
9923.00†	90.000	88.021	6558.00	3029.72	638.45	2966.84	3305921.34	1364181.03	40.3278820	-104.4027193	0.00	
10023.00†	90.000	88.021	6558.00	3129.00	641.91	3066.78	3306021.22	1364185.70	40.3278915	-104.4023608	0.00	
10123.00†	90.000	88.021	6558.00	3228.29	645.36	3166.72	3306121.11	1364190.38	40.3279009	-104.4020024	0.00	
10223.00†	90.000	88.021	6558.00	3327.57	648.81	3266.66	3306220.99	1364195.06	40.3279104	-104.4016439	0.00	
10323.00†	90.000	88.021	6558.00	3426.85	652.27	3366.60	3306320.88	1364199.74	40.3279198	-104.4012855	0.00	
10423.00†	90.000	88.021	6558.00	3526.14	655.72	3466.54	3306420.77	1364204.42	40.3279292	-104.4009271	0.00	
10523.00†	90.000	88.021	6558.00	3625.42	659.18	3566.48	3306520.65	1364209.09	40.3279387	-104.4005686	0.00	
10623.00†	90.000	88.021	6558.00	3724.70	662.63	3666.42	3306620.54	1364213.77	40.3279481	-104.4002102	0.00	
10723.00†	90.000	88.021	6558.00	3823.99	666.08	3766.36	3306720.42	1364218.45	40.3279576	-104.3998517	0.00	
10823.00†	90.000	88.021	6558.00	3923.27	669.54	3866.30	3306820.31	1364223.13	40.3279670	-104.3994933	0.00	
10923.00†	90.000	88.021	6558.00	4022.55	672.99	3966.24	3306920.20	1364227.81	40.3279764	-104.3991348	0.00	
11023.00†	90.000	88.021	6558.00	4121.84	676.45	4066.18	3307020.08	1364232.49	40.3279859	-104.3987764	0.00	
11123.00†	90.000	88.021	6558.00	4221.12	679.90	4166.12	3307119.97	1364237.16	40.3279953	-104.3984179	0.00	
11223.00†	90.000	88.021	6558.00	4320.40	683.35	4266.06	3307219.85	1364241.84	40.3280047	-104.3980595	0.00	



## REFERENCE WELLPATH IDENTIFICATION

Operator	CONFLUENCE RESOURCES	Well	BIGFOOT 11-3-4
Field	WELD COUNTY (NAD83, TRUE NORTH)	API/Legal	
Facility	SEC.11-T04N-R63W	Wellbore	BIGFOOT 11-3-4 PWB
Slot	SLOT#18 BIGFOOT 11-3-4 (2331'FSL & 470'FWL,SEC.11)		

## WELLPATH DATA (122 stations) † = interpolated, ‡ = extrapolated station

MD [ft]	Inclination [°]	Azimuth [°]	TVD [ft]	Vert Sect [ft]	North [ft]	East [ft]	Grid East [US ft]	Grid North [US ft]	Latitude	Longitude	DLS [°/100ft]	Comments
11323.00†	90.000	88.021	6558.00	4419.68	686.81	4366.00	3307319.74	1364246.52	40.3280142	-104.3977011	0.00	
11384.67	90.000	88.021	6558.00‡	4480.91	688.94	4427.64	3307381.34	1364249.41	40.3280200	-104.3974800	0.00	TD

## HOLE & CASING SECTIONS

- Ref Wellbore: BIGFOOT 11-3-4 PWB      Ref Wellpath: BIGFOOT 11-3-4 PWP Rev-B.0

String/Diameter	Start MD [ft]	End MD [ft]	Interval [ft]	Start TVD [ft]	End TVD [ft]	Start N/S [ft]	Start E/W [ft]	End N/S [ft]	End E/W [ft]
9.625in Casing Surface	23.00	1705.93	1682.93	23.00	1700.00	0.00	0.00	54.94	-70.03

## TARGETS

Name	MD [ft]	TVD [ft]	North [ft]	East [ft]	Grid East [US ft]	Grid North [US ft]	Latitude	Longitude	Shape
SEC.11-T04N-R63W	N/A	-2.50	127.51	147.78	3303108.87	1363635.60	40.3264800	-104.4128300	polygon
2D Polygon: dimensions not calculated									
SEC.11-T04N-R63W 470' SETBACK	N/A	-2.50	127.51	147.78	3303108.87	1363635.60	40.3264800	-104.4128300	polygon
2D Polygon: dimensions not calculated									
2) BIGFOOT 11-3-4 BHL REV-1 (2362'FNL & 470'FEL,SEC.11)	11384.67	6558.00	688.94	4427.64	3307381.34	1364249.41	40.3280200	-104.3974800	point
1) BIGFOOT 11-3-4 LP REV-1 (2362'FNL & 470'FWL,SEC.11)	6943.23	6558.00	535.53	-11.15	3302944.96	1364041.63	40.3276000	-104.4134000	point



# Planned Wellpath Report

BIGFOOT 11-3-4 PWP Rev-B.0

Page 7 of 8



## REFERENCE WELLPATH IDENTIFICATION

Operator	CONFLUENCE RESOURCES	Well	BIGFOOT 11-3-4
Field	WELD COUNTY (NAD83, TRUE NORTH)	API/Legal	
Facility	SEC.11-T04N-R63W	Wellbore	BIGFOOT 11-3-4 PWB
Slot	SLOT#18 BIGFOOT 11-3-4 (2331'FSL & 470'FWL,SEC.11)		

## SURVEY PROGRAM - Ref Wellbore: BIGFOOT 11-3-4 PWB Ref Wellpath: BIGFOOT 11-3-4 PWP Rev-B.0

Start MD [ft]	End MD [ft]	Positional Uncertainty Model	Log Name/Comment	Wellbore
23.00	1705.93	BH NaviTrak (2019) (Standard)		BIGFOOT 11-3-4 PWB
1705.93	11384.67	BH AutoTrak Curve/eXpress (2019) (Short spacing)		BIGFOOT 11-3-4 PWB





# Planned Wellpath Report

BIGFOOT 11-3-4 PWP Rev-B.0

Page 8 of 8



## REFERENCE WELLPATH IDENTIFICATION

Operator	CONFLUENCE RESOURCES	Well	BIGFOOT 11-3-4
Field	WELD COUNTY (NAD83, TRUE NORTH)	API/Legal	
Facility	SEC.11-T04N-R63W	Wellbore	BIGFOOT 11-3-4 PWB
Slot	SLOT#18 BIGFOOT 11-3-4 (2331'FSL & 470'FWL,SEC.11)		

## DESIGN COMMENTS

MD [ft]	Inclination [°]	Azimuth [°]	TVD [ft]	Comment
23.00	0.000	308.116	23.00	Tie On
900.00	0.000	308.116	900.00	End of Tangent
1334.55	8.691	308.116	1332.89	End of Build (J)
1705.93	8.691	308.116	1700.00	End of Tangent (J)
1805.93	8.691	308.116	1798.85	End of Tangent
5976.86	8.691	308.116	5921.89	KOP
6943.23	90.000	88.021	6558.00	LANDING
11384.67	90.000	88.021	6558.00	TD



# Closest Approach Clearance Summary Report

BIGFOOT 11-3-4 PWP Rev-B.0 - SPE WPTS Stop  
Drilling HSE Risk (2017)  
Page 1 of 3



REFERENCE WELLPATH IDENTIFICATION			
Operator	CONFLUENCE RESOURCES	Well	BIGFOOT 11-3-4
Field	WELD COUNTY (NAD83, TRUE NORTH)	API/Legal	
Facility	SEC.11-T04N-R63W	Wellbore	BIGFOOT 11-3-4 PWB
Slot	SLOT#18 BIGFOOT 11-3-4 (2331'FSL & 470'FWL,SEC.11)		

REPORT SETUP INFORMATION			
Projection System	NAD83 / Lambert Colorado SP, Northern Zone (501), US feet	Software System	WellArchitect® 6.0
North Reference	True	User	Painsetr
Scale	0.999958	Report Generated	4/26/2022 at 3:42:41 PM
Convergence at slot	0.70° East	Database	WellArchitectDB

WELLPATH LOCATION						
	Local coordinates		Grid coordinates		Geographic coordinates	
	North[ft]	East[ft]	Easting[US ft]	Northing[US ft]	Latitude	Longitude
Slot Location	-127.51	-147.78	3302962.68	1363506.30	40.3261300°	-104.4133600°
Facility Reference Pt			3303108.87	1363635.60	40.3264800°	-104.4128300°
Field Reference Pt			3230456.90	1245096.09	40.0032400°	-104.6773400°

WELLPATH DATUM			
Calculation method	Minimum Curvature	Rig (23') (KB) to Facility Vertical Datum	4639.00ft
Horizontal Reference Pt	Slot	Rig (23') (KB) to Mean Sea Level	4639.00ft
Vertical Reference Pt	Rig (23') (KB)	Rig (23') (KB) to Ground Level at Slot (SLOT#18 BIGFOOT 11-3-4 (2331'FSL & 470'FWL,SEC.11))	23.00ft
MD Reference Pt	Rig (23') (KB)		
Field Vertical Reference	Mean Sea Level		

POSITIONAL UNCERTAINTY CALCULATION SETTINGS					
Ellipse Confidence Limit	3.50 Std Dev	Ellipse Start MD	23.00ft	Surface Position Uncertainty	included
Declination	7.76° East of TN	Dip Angle	66.72°	Mag Field Strength	51850 nT
Slot Surface Uncertainty @1SD		Horizontal	0.100ft	Vertical	1.000ft
Facility Surface Uncertainty @1SD		Horizontal	8.200ft	Vertical	3.000ft
Positional Uncertainty values in the WELLPATH DATA table are the projection of the ellipsoid of uncertainty onto the vertical and horizontal planes					



# Closest Approach Clearance Summary Report

BIGFOOT 11-3-4 PWP Rev-B.0 - SPE WPTS Stop  
Drilling HSE Risk (2017)  
Page 2 of 3



REFERENCE WELLPATH IDENTIFICATION			
Operator	CONFLUENCE RESOURCES	Well	BIGFOOT 11-3-4
Field	WELD COUNTY (NAD83, TRUE NORTH)	API/Legal	
Facility	SEC.11-T04N-R63W	Wellbore	BIGFOOT 11-3-4 PWB
Slot	SLOT#18 BIGFOOT 11-3-4 (2331'FSL & 470'FWL,SEC.11)		

PROXIMITY-SCAN RULE			
Rule Name	SPE WPTS Stop Drilling HSE Risk (2017)	Rule Based On	Ratio
Plane of Rule	Closest Approach	Threshold Value	1.00
Include Casing & Hole Size	yes	Apply Cone of Safety	no

HOLE & CASING SECTIONS									
- Ref Wellbore: BIGFOOT 11-3-4 PWB      Ref Wellpath: BIGFOOT 11-3-4 PWP Rev-B.0									
String/Diameter	Start MD [ft]	End MD [ft]	Interval [ft]	Start TVD [ft]	End TVD [ft]	Start N/S [ft]	Start E/W [ft]	End N/S [ft]	End E/W [ft]
9.625in Casing Surface	23.00	1705.93	1682.93	23.00	1700.00	0.00	0.00	54.94	-70.03

SURVEY PROGRAM - Ref Wellbore: BIGFOOT 11-3-4 PWB      Ref Wellpath: BIGFOOT 11-3-4 PWP Rev-B.0				
Start MD [ft]	End MD [ft]	Positional Uncertainty Model	Log Name/Comment	Wellbore
23.00	1705.93	BH NaviTrak (2019) (Standard)		BIGFOOT 11-3-4 PWB
1705.93	11384.67	BH AutoTrak Curve/eXpress (2019) (Short spacing)		BIGFOOT 11-3-4 PWB



# Closest Approach Clearance Summary Report

**BIGFOOT 11-3-4 PWP Rev-B.0 - SPE WPTS Stop  
Drilling HSE Risk (2017)**  
Page 3 of 3



REFERENCE WELLPATH IDENTIFICATION			
Operator	CONFLUENCE RESOURCES	Well	BIGFOOT 11-3-4
Field	WELD COUNTY (NAD83, TRUE NORTH)	API/Legal	
Facility	SEC.11-T04N-R63W	Wellbore	BIGFOOT 11-3-4 PWB
Slot	SLOT#18 BIGFOOT 11-3-4 (2331'FSL & 470'FWL,SEC.11)		

CALCULATION RANGE & CUTOFF		
From: 23.00ft MD	To: 11384.67ft MD	C-C Cutoff: (none)

OFFSET WELL CLEARANCE SUMMARY (17 Offset Wellpaths selected) Ratios are calculated in Closest Approach plane												
Offset Facility	Offset Slot	Offset Well	Offset Wellbore	Offset Wellpath	Wellbore Status	C-C Clearance Distance			Rule Separation Ratio			
						Ref MD [ft]	Min C-C Clear Dist [ft]	Diverging from MD [ft]	Ref MD of Min Ratio [ft]	Min Ratio	Min Ratio Dvrg from [ft]	Rule Status
SEC.11-T04N-R63W	SLOT#19 BIGFOOT 11-6-2 (2306'FSL & 470'FWL,SEC.11)	BIGFOOT 11-6-2	BIGFOOT 11-6-2 PWB	BIGFOOT 11-6-2 PWP Rev-B.0	Planned	23.00	25.50	11323.00	11376.63	1.05	11376.63	WARN
SEC.11-T04N-R63W	SLOT#17 BIGFOOT 11-5-1 (2356'FSL & 470'FWL,SEC.11)	BIGFOOT 11-5-1	BIGFOOT 11-5-1 PWB	BIGFOOT 11-5-1 PWP Rev-B.0	Planned	23.00	25.65	6943.23	11384.67	1.26	11384.67	PASS
SEC.11-T04N-R63W	SLOT#16 BIGFOOT 11-4-3 (2381'FSL & 470'FWL,SEC.11)	BIGFOOT 11-4-3	BIGFOOT 11-4-3 PWB	BIGFOOT 11-4-3 PWP Rev-B.0	Planned	23.00	51.08	11384.67	11384.67	1.26	11384.67	PASS
SEC.11-T04N-R63W	SLOT#20 BIGFOOT 11-7-3 (2281'FSL & 470'FWL,SEC.11)	BIGFOOT 11-7-3	BIGFOOT 11-7-3 PWB	BIGFOOT 11-7-3 PWP Rev-B.0	Planned	23.00	47.36	900.00	11376.36	1.48	11376.36	PASS
SEC.11-T04N-R63W	SLOT#15 BIGFOOT 11-3-2 (2406'FSL & 470'FWL,SEC.11)	BIGFOOT 11-3-2	BIGFOOT 11-3-2 PWB	BIGFOOT 11-3-2 PWP Rev-B.0	Planned	23.00	76.56	11384.67	11384.67	2.11	11384.67	PASS
SEC.11-T04N-R63W	SLOT#01 BIGFOOT 11-8-1 (2455'FSL & 620'FWL,SEC.11)	BIGFOOT 11-8-1	BIGFOOT 11-8-1 PWB	BIGFOOT 11-8-1 PWP Rev-B.0	Planned	1966.59	148.02	1966.59	11384.67	2.37	11384.67	PASS
SEC.11-T04N-R63W	SLOT#14 BIGFOOT 11-2-4 (2431'FSL & 470'FWL,SEC.11)	BIGFOOT 11-2-4	BIGFOOT 11-2-4 PWB	BIGFOOT 11-2-4 PWP Rev-B.0	Planned	23.00	102.04	11384.67	11384.67	2.57	11384.67	PASS
SEC.11-T04N-R63W	SLOT#02 BIGFOOT 11-4-4 (2430'FSL & 620'FWL,SEC.11)	BIGFOOT 11-4-4	BIGFOOT 11-4-4 PWB	BIGFOOT 11-4-4 PWP Rev-B.0	Planned	1773.34	142.28	1773.34	11384.67	2.59	11384.67	PASS
SEC.11-T04N-R63W	SLOT#03 BIGFOOT 11-9-2 (2405'FSL & 620'FWL,SEC.11)	BIGFOOT 11-9-2	BIGFOOT 11-9-2 PWB	BIGFOOT 11-9-2 PWP Rev-B.0	Planned	1575.52	145.87	1575.52	11384.67	3.28	11384.67	PASS
SEC.10-T04N-R63W	SLOT#02 70 RANCH 10-11-2 (2360'FNL & 514'FEL, SEC.10)	70 RANCH 10-11-2	70 RANCH 10-11-2 AWB	70 RANCH 10-11-2 AWP	Drilling	3574.83	921.65	11384.67	11384.67	3.60	11384.67	PASS
SEC.11-T04N-R63W	SLOT#04 BIGFOOT 11-10-3 (2380'FSL & 620'FWL,SEC.11)	BIGFOOT 11-10-3	BIGFOOT 11-10-3 PWB	BIGFOOT 11-10-3 PWP Rev-B.0	Planned	1289.26	148.39	1289.26	11384.67	4.03	11384.67	PASS
SEC.11-T04N-R63W	SLOT#05 BIGFOOT 11-11-1 (2355'FSL & 620'FWL,SEC.11)	BIGFOOT 11-11-1	BIGFOOT 11-11-1 PWB	BIGFOOT 11-11-1 PWP Rev-B.0	Planned	1108.99	146.53	1108.99	11384.67	4.88	11384.67	PASS
SEC.10-T04N-R63W	SLOT#01 70 RANCH 10-11-1 (2345'FNL & 514'FEL, SEC.10)	70 RANCH 10-11-1	70 RANCH 10-11-1 AWB	70 RANCH 10-11-1 AWP	Drilling	3832.94	944.53	11384.67	11384.67	4.93	11384.67	PASS
SEC.11-T04N-R63W	SLOT#06 BIGFOOT 11-5-4 (2330'FSL & 620'FWL,SEC.11)	BIGFOOT 11-5-4	BIGFOOT 11-5-4 PWB	BIGFOOT 11-5-4 PWP Rev-B.0	Planned	1011.18	144.87	1011.18	11384.67	5.20	11384.67	PASS
SEC.11-T04N-R63W	SLOT#13 BIGFOOT 11-1-4 (2456'FSL & 470'FWL,SEC.11)	BIGFOOT 11-1-4	BIGFOOT 11-1-4 PWB	BIGFOOT 11-1-4 PWP Rev-B.0	Planned	23.00	127.54	11384.67	11384.67	5.40	11384.67	PASS

OFFSET WELL CLEARANCE SUMMARY (17 Offset Wellpaths selected) Ratios are calculated in Closest Approach plane												
Offset Facility	Offset Slot	Offset Well	Offset Wellbore	Offset Wellpath	Wellbore Status	C-C Clearance Distance			Rule Separation Ratio			
						Ref MD [ft]	Min C-C Clear Dist [ft]	Diverging from MD [ft]	Ref MD of Min Ratio [ft]	Min Ratio	Min Ratio Dvrg from [ft]	Rule Status
SEC.11-T04N-R63W	SLOT#07 BIGFOOT 11-12-2 (2305'FSL & 620'FWL,SEC.11)	BIGFOOT 11-12-2	BIGFOOT 11-12-2 PWB	BIGFOOT 11-12-2 PWP Rev-B.0	Planned	957.20	148.93	957.20	11384.67	5.85	11384.67	PASS
SEC.11-T04N-R63W	SLOT#08 BIGFOOT 11-13-3 (2280'FSL & 620'FWL,SEC.11)	BIGFOOT 11-13-3	BIGFOOT 11-13-3 PWB	BIGFOOT 11-13-3 PWP Rev-B.0	Planned	781.17	157.56	781.17	11384.67	6.64	11384.67	PASS