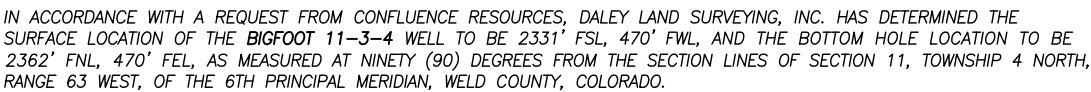


SECTION 11, TOWNSHIP 4 NORTH, RANGE 63 WEST OF THE 6TH P.M.



NOTES:

-
- COLORADO REGISTERED
ROBERT DALEY
7-29-21
35597
PROFESSIONAL LAND SURVEYOR
- FOR AND ON BEHALF OF
DALEY LAND SURVEYING INC.,
Robert Daley, PLS 35597

BUILDING:	1129'± SW
RESIDENTIAL BUILDING UNIT:	5280'+
HIGH OCC. BLD. UNIT:	5280'+
DES. OUTSIDE ACTIVITY AREA:	5280'+
PUBLIC ROAD:	484'± SW
ABOVE GROUND UTILITY:	572'± SW
RAILROAD:	5280'+
PROPERTY LINE:	462'± SW
SCHOOL FACILITY:	5280'+
SCHOOL PROPERTY LINE:	5280'+
CHILDCARE FACILITY:	5280'+



SURFACE LOCATION:

SURFACE LOCATION:
LATITUDE: N40.32613°
LONGITUDE: W104.41336°
ELEV.: 4613'
PDOP.: 1.6
QTR/QTR: NW4/SW4

LANDING POINT:

LATITUDE: N40.32760°
LONGITUDE: W104.41340°

BOTTOM HOLE:

LATITUDE: N40.32802°
LONGITUDE: W104.39748°