

CONFLUENCE RESOURCES



Location: COLORADO Slot: SLOT#16 BIGFOOT 11-4-3 (2381°FSL & 470°FWL,SEC.11)
Field: WELD COUNTY (NAD83, TRUE NORTH) Well: BIGFOOT 11-4-3
Facility: SEC.11-T04N-R63W Wellbore: BIGFOOT 11-4-3 PWB

Plot reference wellpath is BIGFOOT 11-4-3 PWP RevB.0
True vertical depths are referenced to Rig (23) (KB)
Reference wellpath measured depths are referenced to Rig (23) (KB)
Rig (23) (KB) to Mean Sea Level: 4639 feet
Mean Sea Level to Ground level (At Slot: SLOT#16 BIGFOOT 11-4-3 (2381°FSL & 470°FWL,SEC.11)): -4616 feet
Offset wellpath MDs are referenced to each path's default MD datum
Created by: painseir on 2022-04-26; Database: WellArchitectDB

Location Information

Facility Name	Grid East (US ft)	Grid North (US ft)	Latitude	Longitude
SEC.11-T04N-R63W	3303108.873	1363635.600	40°19'35.3280"N	104°24'46.1880"W
Slot	Local N (ft)	Local E (ft)	Grid East (US ft)	Grid North (US ft)
SLOT#16 BIGFOOT 11-4-3 (2381°FSL & 470°FWL,SEC.11)	-76.50	-150.57	3302959.263	1363557.259
Rig (23) (KB) to Ground level (At Slot: SLOT#16 BIGFOOT 11-4-3 (2381°FSL & 470°FWL,SEC.11))				23ft
Mean Sea Level to Ground level (At Slot: SLOT#16 BIGFOOT 11-4-3 (2381°FSL & 470°FWL,SEC.11))				-4616ft
Rig (23) (KB) to Mean Sea Level				4639ft

Hole and Casing Sections

Name	Start MD (ft)	End MD (ft)	Interval (ft)	Start TVD (ft)	End TVD (ft)	Start Local N (ft)	Start Local E (ft)	End Local N (ft)	End Local E (ft)	Wellbore
9.625in Casing Surface	23.00	1711.49	1688.49	23.00	1700.00	0.00	0.00	105.81	-73.42	BIGFOOT 11-4-3 PWB

Survey Program

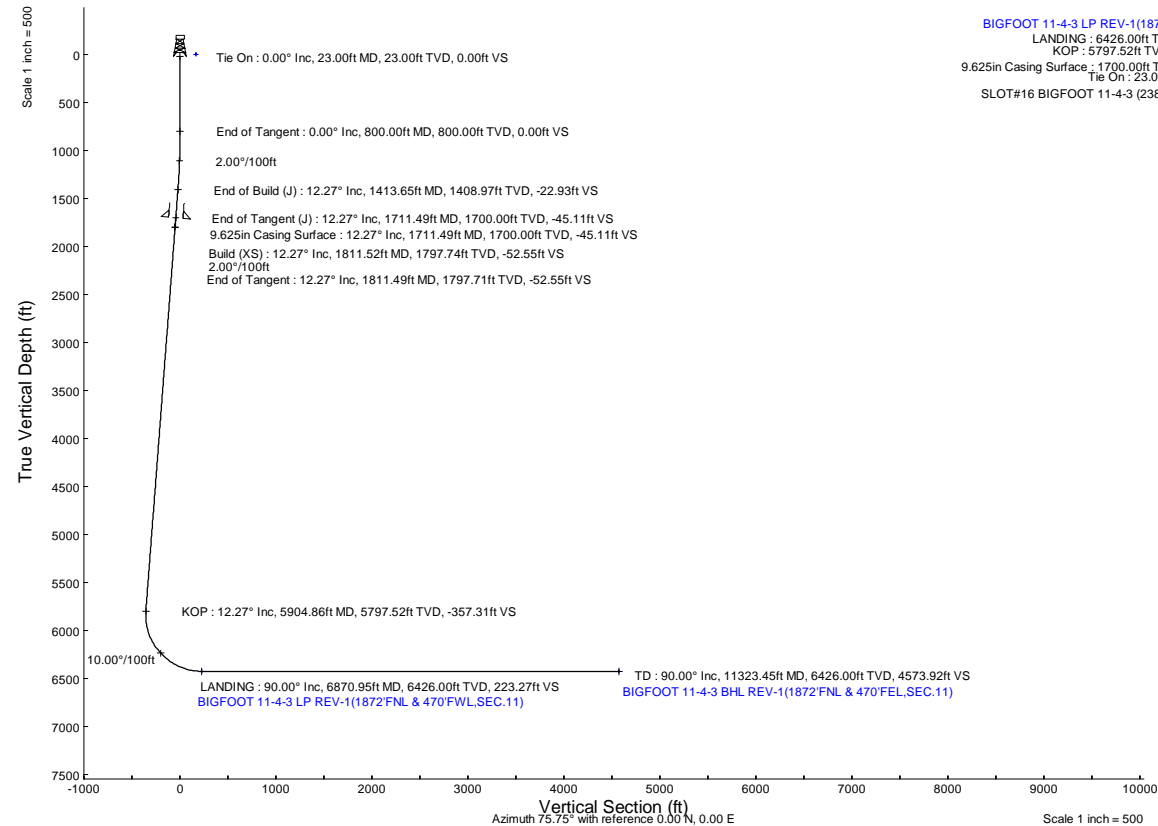
Start MD (ft)	End MD (ft)	Tool	Model	Log Name/Comment	Wellbore
23.00	1711.49	BH NavTrak (2019)	BH NavTrak (2019) (Standard)		BIGFOOT 11-4-3 PWB
1711.49	11323.45	BH AutoTrak Curve/eXpress (2019)	BH AutoTrak Curve/eXpress (2019) (Short spacing)		BIGFOOT 11-4-3 PWB

Bottom Hole Location

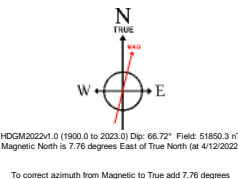
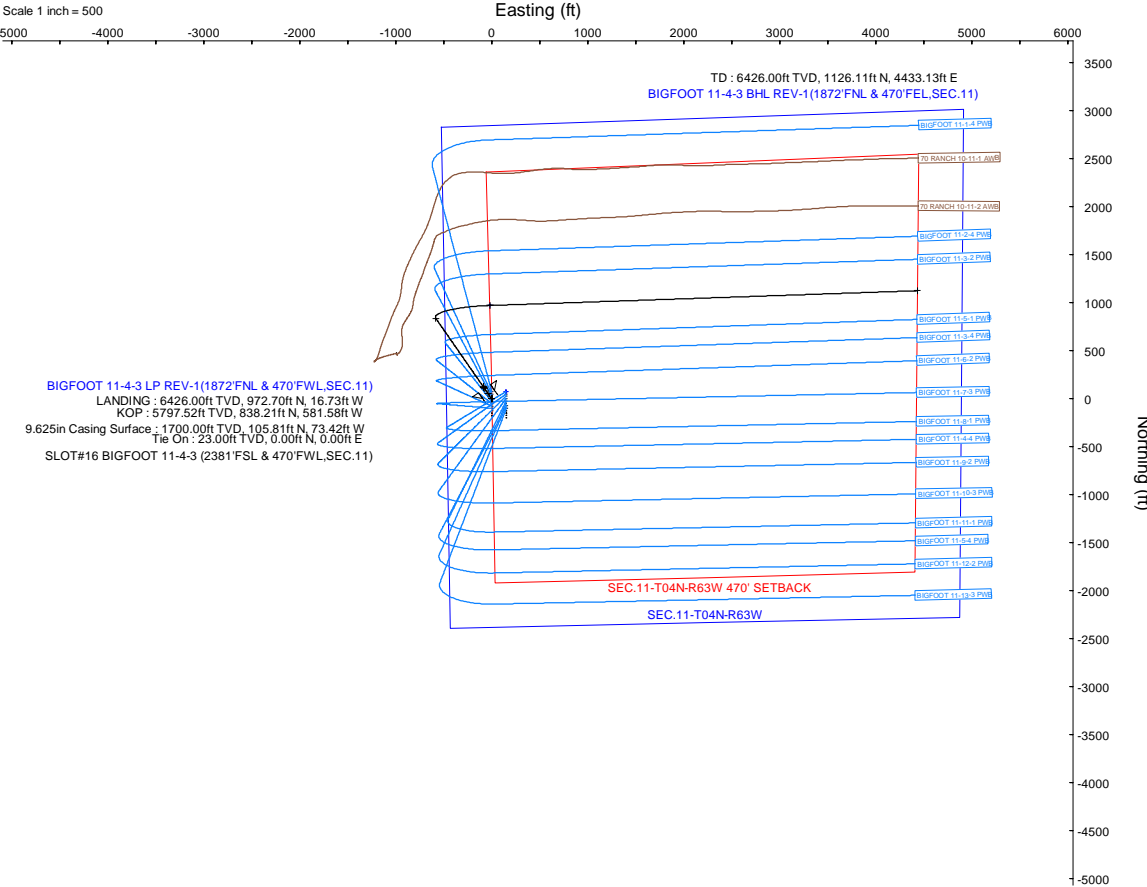
MD (ft)	Inc (°)	Az (°)	TVD (ft)	Local N (ft)	Local E (ft)	Grid East (US ft)	Grid North (US ft)	Latitude	Longitude
11323.45	90.000	88.026	6426.00	1126.11	4433.13	3307378.06	1364737.55	40°19'45.6960"N	104°23'50.8920"W

Targets

Name	MD (ft)	TVD (ft)	Local N (ft)	Local E (ft)	Grid East (US ft)	Grid North (US ft)	Latitude	Longitude
SEC.11-T04N-R63W	N/A	-2.50	76.51	150.57	3303108.87	1363635.60	40°19'35.3280"N	104°24'46.1880"W
SEC.11-T04N-R63W 470' SETBACK	N/A	-2.50	76.51	150.57	3303108.87	1363635.60	40°19'35.3280"N	104°24'46.1880"W
BIGFOOT 11-4-3 BHL REV-1(1872°FNL & 470°FEL,SEC.11)	11323.45	6426.00	1126.11	4433.13	3307378.06	1364737.55	40°19'45.6960"N	104°23'50.8920"W
BIGFOOT 11-4-3 LP REV-1(1872°FNL & 470°FWL,SEC.11)	6870.95	6426.00	972.70	-16.73	3302930.62	1364529.64	40°19'44.1840"N	104°24'48.3480"W



Design Comment	MD (ft)	Inc (°)	Az (°)	TVD (ft)	Local N (ft)	Local E (ft)	DLS (°/100ft)	VS (ft)
Tie On	23.00	0.000	325.245	23.00	0.00	0.00	0.00	0.00
End of Tangent	800.00	0.000	325.245	800.00	0.00	0.00	0.00	0.00
End of Build (J)	1413.65	12.273	325.245	1408.97	53.79	-37.32	2.00	-22.93
End of Tangent (J)	1711.49	12.273	325.245	1700.00	105.81	-73.42	0.00	-45.11
End of Tangent	1811.49	12.273	325.245	1797.71	123.27	-85.53	0.00	-52.55
Build (XS)	1811.52	12.274	325.246	1797.74	123.28	-85.54	2.00	-52.55
KOP	5904.86	12.274	325.246	5797.52	838.21	-581.58	0.00	-357.31
LANDING	6870.95	90.000	88.026	6426.00	972.70	-16.73	10.00	223.27
TD	11323.45	90.000	88.026	6426.00	1126.11	4433.13	0.00	4573.92





Planned Wellpath Report

BIGFOOT 11-4-3 PWP Rev-B.0

Page 1 of 8



REFERENCE WELLPATH IDENTIFICATION

Operator	CONFLUENCE RESOURCES	Well	BIGFOOT 11-4-3
Field	WELD COUNTY (NAD83, TRUE NORTH)	API/Legal	
Facility	SEC.11-T04N-R63W	Wellbore	BIGFOOT 11-4-3 PWB
Slot	SLOT#16 BIGFOOT 11-4-3 (2381'FSL & 470'FWL,SEC.11)		

REPORT SETUP INFORMATION

Projection System	NAD83 / Lambert Colorado SP, Northern Zone (501), US feet	Software System	WellArchitect® 6.0
North Reference	True	User	Painsetr
Scale	0.999958	Report Generated	4/26/2022 at 3:34:55 PM
Convergence at slot	0.70° East	Database	WellArchitectDB

WELLPATH LOCATION

	Local coordinates		Grid coordinates		Geographic coordinates	
	North[ft]	East[ft]	Easting[US ft]	Northing[US ft]	Latitude	Longitude
Slot Location	-76.50	-150.57	3302959.26	1363557.26	40.3262700°	-104.4133700°
Facility Reference Pt			3303108.87	1363635.60	40.3264800°	-104.4128300°
Field Reference Pt			3230456.90	1245096.09	40.0032400°	-104.6773400°

WELLPATH DATUM

Calculation method	Minimum curvature	Rig (23') (KB) to Facility Vertical Datum	4639.00ft
Horizontal Reference Pt	Slot	Rig (23') (KB) to Mean Sea Level	4639.00ft
Vertical Reference Pt	Rig (23') (KB)	Rig (23') (KB) to Ground Level at Slot (SLOT#16 BIGFOOT 11-4-3 (2381'FSL & 470'FWL,SEC.11))	23.00ft
MD Reference Pt	Rig (23') (KB)	Section Origin	N 0.00, E 0.00 ft
Field Vertical Reference	Mean Sea Level	Section Azimuth	75.75°

Planned Wellpath Report

BIGFOOT 11-4-3 PWP Rev-B.0

Page 2 of 8

REFERENCE WELLPATH IDENTIFICATION

Operator	CONFLUENCE RESOURCES	Well	BIGFOOT 11-4-3
Field	WELD COUNTY (NAD83, TRUE NORTH)	API/Legal	
Facility	SEC.11-T04N-R63W	Wellbore	BIGFOOT 11-4-3 PWB
Slot	SLOT#16 BIGFOOT 11-4-3 (2381'FSL & 470'FWL,SEC.11)		

WELLPATH DATA (123 stations) † = interpolated, ‡ = extrapolated station

MD [ft]	Inclination [°]	Azimuth [°]	TVD [ft]	Vert Sect [ft]	North [ft]	East [ft]	Grid East [US ft]	Grid North [US ft]	Latitude	Longitude	DLS [°/100ft]	Comments
0.00†	0.000	325.245	0.00	0.00	0.00	0.00	3302959.26	1363557.26	40.3262700	-104.4133700	0.00	
23.00	0.000	325.245	23.00	0.00	0.00	0.00	3302959.26	1363557.26	40.3262700	-104.4133700	0.00	Tie On
123.00†	0.000	325.245	123.00	0.00	0.00	0.00	3302959.26	1363557.26	40.3262700	-104.4133700	0.00	
223.00†	0.000	325.245	223.00	0.00	0.00	0.00	3302959.26	1363557.26	40.3262700	-104.4133700	0.00	
323.00†	0.000	325.245	323.00	0.00	0.00	0.00	3302959.26	1363557.26	40.3262700	-104.4133700	0.00	
423.00†	0.000	325.245	423.00	0.00	0.00	0.00	3302959.26	1363557.26	40.3262700	-104.4133700	0.00	
523.00†	0.000	325.245	523.00	0.00	0.00	0.00	3302959.26	1363557.26	40.3262700	-104.4133700	0.00	
623.00†	0.000	325.245	623.00	0.00	0.00	0.00	3302959.26	1363557.26	40.3262700	-104.4133700	0.00	
723.00†	0.000	325.245	723.00	0.00	0.00	0.00	3302959.26	1363557.26	40.3262700	-104.4133700	0.00	
800.00	0.000	325.245	800.00	0.00	0.00	0.00	3302959.26	1363557.26	40.3262700	-104.4133700	0.00	End of Tangent
823.00†	0.460	325.245	823.00	-0.03	0.08	-0.05	3302959.21	1363557.33	40.3262702	-104.4133702	2.00	
923.00†	2.460	325.245	922.96	-0.92	2.17	-1.51	3302957.73	1363559.41	40.3262760	-104.4133754	2.00	
1023.00†	4.460	325.245	1022.77	-3.04	7.13	-4.95	3302954.23	1363564.33	40.3262896	-104.4133877	2.00	
1123.00†	6.460	325.245	1122.32	-6.37	14.94	-10.37	3302948.71	1363572.07	40.3263110	-104.4134072	2.00	
1223.00†	8.460	325.245	1221.46	-10.92	25.61	-17.77	3302941.18	1363582.65	40.3263403	-104.4134337	2.00	
1323.00†	10.460	325.245	1320.10	-16.67	39.11	-27.14	3302931.65	1363596.04	40.3263774	-104.4134673	2.00	
1413.65	12.273	325.245	1408.97	-22.93	53.79	-37.32	3302921.28	1363610.59	40.3264177	-104.4135039	2.00	End of Build (J)
1423.00†	12.273	325.245	1418.10	-23.63	55.42	-38.46	3302920.13	1363612.21	40.3264221	-104.4135079	0.00	
1523.00†	12.273	325.245	1515.82	-31.07	72.89	-50.57	3302907.80	1363629.52	40.3264701	-104.4135514	0.00	
1623.00†	12.273	325.245	1613.53	-38.52	90.35	-62.69	3302895.47	1363646.83	40.3265180	-104.4135948	0.00	
1711.49	12.273	325.245	1700.00	-45.11	105.81	-73.42	3302884.56	1363662.16	40.3265604	-104.4136333	0.00	End of Tangent (J)
1723.00†	12.273	325.245	1711.25	-45.96	107.82	-74.81	3302883.14	1363664.15	40.3265660	-104.4136383	0.00	
1811.49	12.273	325.245	1797.71	-52.55	123.27	-85.53	3302872.23	1363679.47	40.3266084	-104.4136768	0.00	End of Tangent
1811.52	12.274	325.246	1797.74	-52.55	123.28	-85.54	3302872.23	1363679.47	40.3266084	-104.4136768	2.00	Build (XS)
1823.00†	12.274	325.246	1808.96	-53.41	125.28	-86.93	3302870.81	1363681.46	40.3266139	-104.4136818	0.00	
1923.00†	12.274	325.246	1906.68	-60.85	142.75	-99.05	3302858.48	1363698.78	40.3266618	-104.4137252	0.00	
2023.00†	12.274	325.246	2004.39	-68.30	160.21	-111.17	3302846.15	1363716.09	40.3267098	-104.4137687	0.00	
2123.00†	12.274	325.246	2102.11	-75.74	177.68	-123.28	3302833.82	1363733.41	40.3267577	-104.4138122	0.00	
2223.00†	12.274	325.246	2199.82	-83.19	195.15	-135.40	3302821.49	1363750.72	40.3268057	-104.4138556	0.00	
2323.00†	12.274	325.246	2297.53	-90.63	212.61	-147.52	3302809.16	1363768.04	40.3268536	-104.4138991	0.00	

Planned Wellpath Report

BIGFOOT 11-4-3 PWP Rev-B.0

Page 3 of 8

REFERENCE WELLPATH IDENTIFICATION

Operator	CONFLUENCE RESOURCES	Well	BIGFOOT 11-4-3
Field	WELD COUNTY (NAD83, TRUE NORTH)	API/Legal	
Facility	SEC.11-T04N-R63W	Wellbore	BIGFOOT 11-4-3 PWB
Slot	SLOT#16 BIGFOOT 11-4-3 (2381'FSL & 470'FWL,SEC.11)		

WELLPATH DATA (123 stations) † = interpolated, ‡ = extrapolated station

MD [ft]	Inclination [°]	Azimuth [°]	TVD [ft]	Vert Sect [ft]	North [ft]	East [ft]	Grid East [US ft]	Grid North [US ft]	Latitude	Longitude	DLS [°/100ft]	Comments
2423.00†	12.274	325.246	2395.25	-98.08	230.08	-159.64	3302796.82	1363785.35	40.3269015	-104.4139425	0.00	
2523.00†	12.274	325.246	2492.96	-105.52	247.54	-171.76	3302784.49	1363802.67	40.3269495	-104.4139860	0.00	
2623.00†	12.274	325.246	2590.68	-112.97	265.01	-183.87	3302772.16	1363819.98	40.3269974	-104.4140295	0.00	
2723.00†	12.274	325.246	2688.39	-120.41	282.47	-195.99	3302759.83	1363837.30	40.3270454	-104.4140729	0.00	
2823.00†	12.274	325.246	2786.11	-127.86	299.94	-208.11	3302747.50	1363854.61	40.3270933	-104.4141164	0.00	
2923.00†	12.274	325.246	2883.82	-135.30	317.41	-220.23	3302735.17	1363871.93	40.3271413	-104.4141599	0.00	
3023.00†	12.274	325.246	2981.54	-142.75	334.87	-232.35	3302722.84	1363889.24	40.3271892	-104.4142033	0.00	
3123.00†	12.274	325.246	3079.25	-150.20	352.34	-244.47	3302710.51	1363906.56	40.3272371	-104.4142468	0.00	
3223.00†	12.274	325.246	3176.96	-157.64	369.80	-256.58	3302698.18	1363923.87	40.3272851	-104.4142902	0.00	
3323.00†	12.274	325.246	3274.68	-165.09	387.27	-268.70	3302685.85	1363941.19	40.3273330	-104.4143337	0.00	
3423.00†	12.274	325.246	3372.39	-172.53	404.73	-280.82	3302673.52	1363958.50	40.3273810	-104.4143772	0.00	
3523.00†	12.274	325.246	3470.11	-179.98	422.20	-292.94	3302661.19	1363975.82	40.3274289	-104.4144206	0.00	
3623.00†	12.274	325.246	3567.82	-187.42	439.67	-305.06	3302648.85	1363993.13	40.3274768	-104.4144641	0.00	
3723.00†	12.274	325.246	3665.54	-194.87	457.13	-317.18	3302636.52	1364010.45	40.3275248	-104.4145076	0.00	
3823.00†	12.274	325.246	3763.25	-202.31	474.60	-329.29	3302624.19	1364027.76	40.3275727	-104.4145510	0.00	
3923.00†	12.274	325.246	3860.96	-209.76	492.06	-341.41	3302611.86	1364045.08	40.3276207	-104.4145945	0.00	
4023.00†	12.274	325.246	3958.68	-217.20	509.53	-353.53	3302599.53	1364062.39	40.3276686	-104.4146380	0.00	
4123.00†	12.274	325.246	4056.39	-224.65	526.99	-365.65	3302587.20	1364079.71	40.3277166	-104.4146814	0.00	
4223.00†	12.274	325.246	4154.11	-232.09	544.46	-377.77	3302574.87	1364097.02	40.3277645	-104.4147249	0.00	
4323.00†	12.274	325.246	4251.82	-239.54	561.92	-389.89	3302562.54	1364114.34	40.3278124	-104.4147683	0.00	
4423.00†	12.274	325.246	4349.54	-246.98	579.39	-402.00	3302550.21	1364131.65	40.3278604	-104.4148118	0.00	
4523.00†	12.274	325.246	4447.25	-254.43	596.86	-414.12	3302537.88	1364148.97	40.3279083	-104.4148553	0.00	
4623.00†	12.274	325.246	4544.97	-261.87	614.32	-426.24	3302525.55	1364166.28	40.3279563	-104.4148987	0.00	
4723.00†	12.274	325.246	4642.68	-269.32	631.79	-438.36	3302513.21	1364183.60	40.3280042	-104.4149422	0.00	
4823.00†	12.274	325.246	4740.39	-276.76	649.25	-450.48	3302500.88	1364200.91	40.3280521	-104.4149857	0.00	
4923.00†	12.274	325.246	4838.11	-284.21	666.72	-462.60	3302488.55	1364218.23	40.3281001	-104.4150291	0.00	
5023.00†	12.274	325.246	4935.82	-291.65	684.18	-474.71	3302476.22	1364235.54	40.3281480	-104.4150726	0.00	
5123.00†	12.274	325.246	5033.54	-299.10	701.65	-486.83	3302463.89	1364252.86	40.3281960	-104.4151161	0.00	
5223.00†	12.274	325.246	5131.25	-306.54	719.12	-498.95	3302451.56	1364270.18	40.3282439	-104.4151595	0.00	
5323.00†	12.274	325.246	5228.97	-313.99	736.58	-511.07	3302439.23	1364287.49	40.3282919	-104.4152030	0.00	

Planned Wellpath Report

BIGFOOT 11-4-3 PWP Rev-B.0

Page 4 of 8

REFERENCE WELLPATH IDENTIFICATION

Operator	CONFLUENCE RESOURCES	Well	BIGFOOT 11-4-3
Field	WELD COUNTY (NAD83, TRUE NORTH)	API/Legal	
Facility	SEC.11-T04N-R63W	Wellbore	BIGFOOT 11-4-3 PWB
Slot	SLOT#16 BIGFOOT 11-4-3 (2381'FSL & 470'FWL,SEC.11)		

WELLPATH DATA (123 stations) † = interpolated, ‡ = extrapolated station

MD [ft]	Inclination [°]	Azimuth [°]	TVD [ft]	Vert Sect [ft]	North [ft]	East [ft]	Grid East [US ft]	Grid North [US ft]	Latitude	Longitude	DLS [°/100ft]	Comments
5423.00†	12.274	325.246	5326.68	-321.44	754.05	-523.19	3302426.90	1364304.81	40.3283398	-104.4152465	0.00	
5523.00†	12.274	325.246	5424.39	-328.88	771.51	-535.31	3302414.57	1364322.12	40.3283877	-104.4152899	0.00	
5623.00†	12.274	325.246	5522.11	-336.33	788.98	-547.42	3302402.24	1364339.44	40.3284357	-104.4153334	0.00	
5723.00†	12.274	325.246	5619.82	-343.77	806.44	-559.54	3302389.91	1364356.75	40.3284836	-104.4153768	0.00	
5823.00†	12.274	325.246	5717.54	-351.22	823.91	-571.66	3302377.58	1364374.07	40.3285316	-104.4154203	0.00	
5904.86	12.274	325.246	5797.52	-357.31	838.21	-581.58	3302367.48	1364388.24	40.3285708	-104.4154559	0.00	KOP
5923.00†	11.410	333.030	5815.28	-358.38	841.39	-583.49	3302365.53	1364391.40	40.3285795	-104.4154628	10.00	
6023.00†	11.586	24.879	5913.52	-354.21	859.36	-583.76	3302365.05	1364409.37	40.3286289	-104.4154637	10.00	
6123.00†	18.333	54.521	6010.21	-333.16	877.65	-566.68	3302381.90	1364427.86	40.3286791	-104.4154025	10.00	
6223.00†	27.124	67.105	6102.41	-295.87	895.69	-532.79	3302415.56	1364446.31	40.3287286	-104.4152809	10.00	
6323.00†	36.509	73.719	6187.32	-243.47	912.94	-483.11	3302465.03	1364464.17	40.3287759	-104.4151027	10.00	
6423.00†	46.126	77.897	6262.35	-177.55	928.88	-419.15	3302528.78	1364480.89	40.3288197	-104.4148733	10.00	
6523.00†	55.852	80.899	6325.23	-100.13	943.02	-342.85	3302604.90	1364495.96	40.3288585	-104.4145997	10.00	
6623.00†	65.636	83.274	6374.04	-13.54	954.92	-256.54	3302691.05	1364508.93	40.3288912	-104.4142901	10.00	
6723.00†	75.452	85.305	6407.31	79.58	964.24	-162.83	3302784.63	1364519.39	40.3289168	-104.4139540	10.00	
6823.00†	85.284	87.161	6424.03	176.39	970.69	-64.58	3302882.80	1364527.04	40.3289345	-104.4136016	10.00	
6870.95	90.000	88.026	6426.00†	223.27	972.70	-16.73	3302930.62	1364529.64	40.3289400	-104.4134300	10.00	LANDING
6923.00†	90.000	88.026	6426.00	274.13	974.49	35.29	3302982.61	1364532.07	40.3289449	-104.4132434	0.00	
7023.00†	90.000	88.026	6426.00	371.84	977.94	135.23	3303082.50	1364536.74	40.3289544	-104.4128850	0.00	
7123.00†	90.000	88.026	6426.00	469.55	981.39	235.17	3303182.38	1364541.41	40.3289638	-104.4125265	0.00	
7223.00†	90.000	88.026	6426.00	567.27	984.83	335.11	3303282.27	1364546.08	40.3289733	-104.4121681	0.00	
7323.00†	90.000	88.026	6426.00	664.98	988.28	435.05	3303382.16	1364550.75	40.3289827	-104.4118096	0.00	
7423.00†	90.000	88.026	6426.00	762.69	991.72	534.99	3303482.04	1364555.42	40.3289922	-104.4114512	0.00	
7523.00†	90.000	88.026	6426.00	860.40	995.17	634.94	3303581.93	1364560.09	40.3290016	-104.4110927	0.00	
7623.00†	90.000	88.026	6426.00	958.12	998.61	734.88	3303681.82	1364564.76	40.3290111	-104.4107343	0.00	
7723.00†	90.000	88.026	6426.00	1055.83	1002.06	834.82	3303781.70	1364569.43	40.3290205	-104.4103758	0.00	
7823.00†	90.000	88.026	6426.00	1153.54	1005.50	934.76	3303881.59	1364574.10	40.3290300	-104.4100174	0.00	
7923.00†	90.000	88.026	6426.00	1251.25	1008.95	1034.70	3303981.47	1364578.77	40.3290394	-104.4096589	0.00	
8023.00†	90.000	88.026	6426.00	1348.97	1012.39	1134.64	3304081.36	1364583.44	40.3290489	-104.4093005	0.00	
8123.00†	90.000	88.026	6426.00	1446.68	1015.84	1234.58	3304181.25	1364588.11	40.3290583	-104.4089420	0.00	



Planned Wellpath Report

BIGFOOT 11-4-3 PWP Rev-B.0

Page 5 of 8



REFERENCE WELLPATH IDENTIFICATION

Operator	CONFLUENCE RESOURCES	Well	BIGFOOT 11-4-3
Field	WELD COUNTY (NAD83, TRUE NORTH)	API/Legal	
Facility	SEC.11-T04N-R63W	Wellbore	BIGFOOT 11-4-3 PWB
Slot	SLOT#16 BIGFOOT 11-4-3 (2381'FSL & 470'FWL,SEC.11)		

WELLPATH DATA (123 stations) † = interpolated, ‡ = extrapolated station

MD [ft]	Inclination [°]	Azimuth [°]	TVD [ft]	Vert Sect [ft]	North [ft]	East [ft]	Grid East [US ft]	Grid North [US ft]	Latitude	Longitude	DLS [°/100ft]	Comments
8223.00†	90.000	88.026	6426.00	1544.39	1019.28	1334.52	3304281.13	1364592.77	40.3290678	-104.4085836	0.00	
8323.00†	90.000	88.026	6426.00	1642.10	1022.73	1434.46	3304381.02	1364597.44	40.3290772	-104.4082251	0.00	
8423.00†	90.000	88.026	6426.00	1739.82	1026.18	1534.40	3304480.91	1364602.11	40.3290867	-104.4078667	0.00	
8523.00†	90.000	88.026	6426.00	1837.53	1029.62	1634.34	3304580.79	1364606.78	40.3290961	-104.4075082	0.00	
8623.00†	90.000	88.026	6426.00	1935.24	1033.07	1734.28	3304680.68	1364611.45	40.3291055	-104.4071498	0.00	
8723.00†	90.000	88.026	6426.00	2032.95	1036.51	1834.22	3304780.57	1364616.12	40.3291150	-104.4067913	0.00	
8823.00†	90.000	88.026	6426.00	2130.67	1039.96	1934.16	3304880.45	1364620.79	40.3291244	-104.4064329	0.00	
8923.00†	90.000	88.026	6426.00	2228.38	1043.40	2034.10	3304980.34	1364625.46	40.3291338	-104.4060744	0.00	
9023.00†	90.000	88.026	6426.00	2326.09	1046.85	2134.04	3305080.23	1364630.13	40.3291433	-104.4057160	0.00	
9123.00†	90.000	88.026	6426.00	2423.80	1050.29	2233.99	3305180.11	1364634.80	40.3291527	-104.4053575	0.00	
9223.00†	90.000	88.026	6426.00	2521.52	1053.74	2333.93	3305280.00	1364639.47	40.3291621	-104.4049991	0.00	
9323.00†	90.000	88.026	6426.00	2619.23	1057.18	2433.87	3305379.89	1364644.14	40.3291716	-104.4046406	0.00	
9423.00†	90.000	88.026	6426.00	2716.94	1060.63	2533.81	3305479.77	1364648.81	40.3291810	-104.4042822	0.00	
9523.00†	90.000	88.026	6426.00	2814.65	1064.08	2633.75	3305579.66	1364653.48	40.3291904	-104.4039237	0.00	
9623.00†	90.000	88.026	6426.00	2912.37	1067.52	2733.69	3305679.54	1364658.15	40.3291999	-104.4035653	0.00	
9723.00†	90.000	88.026	6426.00	3010.08	1070.97	2833.63	3305779.43	1364662.82	40.3292093	-104.4032068	0.00	
9823.00†	90.000	88.026	6426.00	3107.79	1074.41	2933.57	3305879.32	1364667.49	40.3292187	-104.4028484	0.00	
9923.00†	90.000	88.026	6426.00	3205.50	1077.86	3033.51	3305979.20	1364672.16	40.3292281	-104.4024899	0.00	
10023.00†	90.000	88.026	6426.00	3303.22	1081.30	3133.45	3306079.09	1364676.83	40.3292376	-104.4021315	0.00	
10123.00†	90.000	88.026	6426.00	3400.93	1084.75	3233.39	3306178.98	1364681.50	40.3292470	-104.4017730	0.00	
10223.00†	90.000	88.026	6426.00	3498.64	1088.19	3333.33	3306278.86	1364686.17	40.3292564	-104.4014146	0.00	
10323.00†	90.000	88.026	6426.00	3596.36	1091.64	3433.27	3306378.75	1364690.84	40.3292658	-104.4010561	0.00	
10423.00†	90.000	88.026	6426.00	3694.07	1095.08	3533.21	3306478.64	1364695.51	40.3292752	-104.4006977	0.00	
10523.00†	90.000	88.026	6426.00	3791.78	1098.53	3633.15	3306578.52	1364700.18	40.3292847	-104.4003392	0.00	
10623.00†	90.000	88.026	6426.00	3889.49	1101.97	3733.09	3306678.41	1364704.84	40.3292941	-104.3999808	0.00	
10723.00†	90.000	88.026	6426.00	3987.21	1105.42	3833.04	3306778.30	1364709.51	40.3293035	-104.3996223	0.00	
10823.00†	90.000	88.026	6426.00	4084.92	1108.87	3932.98	3306878.18	1364714.18	40.3293129	-104.3992639	0.00	
10923.00†	90.000	88.026	6426.00	4182.63	1112.31	4032.92	3306978.07	1364718.85	40.3293223	-104.3989054	0.00	
11023.00†	90.000	88.026	6426.00	4280.34	1115.76	4132.86	3307077.96	1364723.52	40.3293317	-104.3985470	0.00	
11123.00†	90.000	88.026	6426.00	4378.06	1119.20	4232.80	3307177.84	1364728.19	40.3293411	-104.3981885	0.00	



Planned Wellpath Report

BIGFOOT 11-4-3 PWP Rev-B.0

Page 6 of 8



REFERENCE WELLPATH IDENTIFICATION

Operator	CONFLUENCE RESOURCES	Well	BIGFOOT 11-4-3
Field	WELD COUNTY (NAD83, TRUE NORTH)	API/Legal	
Facility	SEC.11-T04N-R63W	Wellbore	BIGFOOT 11-4-3 PWB
Slot	SLOT#16 BIGFOOT 11-4-3 (2381'FSL & 470'FWL,SEC.11)		

WELLPATH DATA (123 stations) † = interpolated, ‡ = extrapolated station

MD [ft]	Inclination [°]	Azimuth [°]	TVD [ft]	Vert Sect [ft]	North [ft]	East [ft]	Grid East [US ft]	Grid North [US ft]	Latitude	Longitude	DLS [°/100ft]	Comments
11223.00†	90.000	88.026	6426.00	4475.77	1122.65	4332.74	3307277.73	1364732.86	40.3293505	-104.3978301	0.00	
11323.00†	90.000	88.026	6426.00	4573.48	1126.09	4432.68	3307377.62	1364737.53	40.3293600	-104.3974716	0.00	
11323.45	90.000	88.026	6426.00‡	4573.92	1126.11	4433.13	3307378.06	1364737.55	40.3293600	-104.3974700	0.00	TD

HOLE & CASING SECTIONS

- Ref Wellbore: BIGFOOT 11-4-3 PWB Ref Wellpath: BIGFOOT 11-4-3 PWP Rev-B.0

String/Diameter	Start MD [ft]	End MD [ft]	Interval [ft]	Start TVD [ft]	End TVD [ft]	Start N/S [ft]	Start E/W [ft]	End N/S [ft]	End E/W [ft]
9.625in Casing Surface	23.00	1711.49	1688.49	23.00	1700.00	0.00	0.00	105.81	-73.42

TARGETS

Name	MD [ft]	TVD [ft]	North [ft]	East [ft]	Grid East [US ft]	Grid North [US ft]	Latitude	Longitude	Shape
SEC.11-T04N-R63W	N/A	-2.50	76.51	150.57	3303108.87	1363635.60	40.3264800	-104.4128300	polygon
2D Polygon: dimensions not calculated									
SEC.11-T04N-R63W 470' SETBACK	N/A	-2.50	76.51	150.57	3303108.87	1363635.60	40.3264800	-104.4128300	polygon
2D Polygon: dimensions not calculated									
2) BIGFOOT 11-4-3 BHL REV-1 (1872'FNL & 470'FEL,SEC.11)	11323.45	6426.00	1126.11	4433.13	3307378.06	1364737.55	40.3293600	-104.3974700	point
1) BIGFOOT 11-4-3 LP REV-1 (1872'FNL & 470'FWL,SEC.11)	6870.95	6426.00	972.70	-16.73	3302930.62	1364529.64	40.3289400	-104.4134300	point



Planned Wellpath Report

BIGFOOT 11-4-3 PWP Rev-B.0

Page 7 of 8



REFERENCE WELLPATH IDENTIFICATION

Operator	CONFLUENCE RESOURCES	Well	BIGFOOT 11-4-3
Field	WELD COUNTY (NAD83, TRUE NORTH)	API/Legal	
Facility	SEC.11-T04N-R63W	Wellbore	BIGFOOT 11-4-3 PWB
Slot	SLOT#16 BIGFOOT 11-4-3 (2381'FSL & 470'FWL,SEC.11)		

SURVEY PROGRAM - Ref Wellbore: BIGFOOT 11-4-3 PWB Ref Wellpath: BIGFOOT 11-4-3 PWP Rev-B.0

Start MD [ft]	End MD [ft]	Positional Uncertainty Model	Log Name/Comment	Wellbore
23.00	1711.49	BH NaviTrak (2019) (Standard)		BIGFOOT 11-4-3 PWB
1711.49	11323.45	BH AutoTrak Curve/eXpress (2019) (Short spacing)		BIGFOOT 11-4-3 PWB



Planned Wellpath Report

BIGFOOT 11-4-3 PWP Rev-B.0

Page 8 of 8



REFERENCE WELLPATH IDENTIFICATION

Operator	CONFLUENCE RESOURCES	Well	BIGFOOT 11-4-3
Field	WELD COUNTY (NAD83, TRUE NORTH)	API/Legal	
Facility	SEC.11-T04N-R63W	Wellbore	BIGFOOT 11-4-3 PWB
Slot	SLOT#16 BIGFOOT 11-4-3 (2381'FSL & 470'FWL,SEC.11)		

DESIGN COMMENTS

MD [ft]	Inclination [°]	Azimuth [°]	TVD [ft]	Comment
23.00	0.000	325.245	23.00	Tie On
800.00	0.000	325.245	800.00	End of Tangent
1413.65	12.273	325.245	1408.97	End of Build (J)
1711.49	12.273	325.245	1700.00	End of Tangent (J)
1811.49	12.273	325.245	1797.71	End of Tangent
1811.52	12.274	325.246	1797.74	Build (XS)
5904.86	12.274	325.246	5797.52	KOP
6870.95	90.000	88.026	6426.00	LANDING
11323.45	90.000	88.026	6426.00	TD



Closest Approach Clearance Summary Report

BIGFOOT 11-4-3 PWP Rev-B.0 - SPE WPTS Stop
Drilling HSE Risk (2017)
Page 1 of 3



REFERENCE WELLPATH IDENTIFICATION			
Operator	CONFLUENCE RESOURCES	Well	BIGFOOT 11-4-3
Field	WELD COUNTY (NAD83, TRUE NORTH)	API/Legal	
Facility	SEC.11-T04N-R63W	Wellbore	BIGFOOT 11-4-3 PWB
Slot	SLOT#16 BIGFOOT 11-4-3 (2381'FSL & 470'FWL,SEC.11)		

REPORT SETUP INFORMATION			
Projection System	NAD83 / Lambert Colorado SP, Northern Zone (501), US feet	Software System	WellArchitect® 6.0
North Reference	True	User	Painsetr
Scale	0.999958	Report Generated	4/26/2022 at 3:35:00 PM
Convergence at slot	0.70° East	Database	WellArchitectDB

WELLPATH LOCATION						
	Local coordinates		Grid coordinates		Geographic coordinates	
	North[ft]	East[ft]	Easting[US ft]	Northing[US ft]	Latitude	Longitude
Slot Location	-76.50	-150.57	3302959.26	1363557.26	40.3262700°	-104.4133700°
Facility Reference Pt			3303108.87	1363635.60	40.3264800°	-104.4128300°
Field Reference Pt			3230456.90	1245096.09	40.0032400°	-104.6773400°

WELLPATH DATUM			
Calculation method	Minimum Curvature	Rig (23') (KB) to Facility Vertical Datum	4639.00ft
Horizontal Reference Pt	Slot	Rig (23') (KB) to Mean Sea Level	4639.00ft
Vertical Reference Pt	Rig (23') (KB)	Rig (23') (KB) to Ground Level at Slot (SLOT#16 BIGFOOT 11-4-3 (2381'FSL & 470'FWL,SEC.11))	23.00ft
MD Reference Pt	Rig (23') (KB)		
Field Vertical Reference	Mean Sea Level		

POSITIONAL UNCERTAINTY CALCULATION SETTINGS					
Ellipse Confidence Limit	3.50 Std Dev	Ellipse Start MD	23.00ft	Surface Position Uncertainty	included
Declination	7.76° East of TN	Dip Angle	66.72°	Mag Field Strength	51850 nT
Slot Surface Uncertainty @1SD		Horizontal	0.100ft	Vertical	1.000ft
Facility Surface Uncertainty @1SD		Horizontal	8.200ft	Vertical	3.000ft
Positional Uncertainty values in the WELLPATH DATA table are the projection of the ellipsoid of uncertainty onto the vertical and horizontal planes					



Closest Approach Clearance Summary Report

BIGFOOT 11-4-3 PWP Rev-B.0 - SPE WPTS Stop
Drilling HSE Risk (2017)
Page 2 of 3



REFERENCE WELLPATH IDENTIFICATION			
Operator	CONFLUENCE RESOURCES	Well	BIGFOOT 11-4-3
Field	WELD COUNTY (NAD83, TRUE NORTH)	API/Legal	
Facility	SEC.11-T04N-R63W	Wellbore	BIGFOOT 11-4-3 PWB
Slot	SLOT#16 BIGFOOT 11-4-3 (2381'FSL & 470'FWL,SEC.11)		

PROXIMITY-SCAN RULE			
Rule Name	SPE WPTS Stop Drilling HSE Risk (2017)	Rule Based On	Ratio
Plane of Rule	Closest Approach	Threshold Value	1.00
Include Casing & Hole Size	yes	Apply Cone of Safety	no

HOLE & CASING SECTIONS									
- Ref Wellbore: BIGFOOT 11-4-3 PWB Ref Wellpath: BIGFOOT 11-4-3 PWP Rev-B.0									
String/Diameter	Start MD [ft]	End MD [ft]	Interval [ft]	Start TVD [ft]	End TVD [ft]	Start N/S [ft]	Start E/W [ft]	End N/S [ft]	End E/W [ft]
9.625in Casing Surface	23.00	1711.49	1688.49	23.00	1700.00	0.00	0.00	105.81	-73.42

SURVEY PROGRAM - Ref Wellbore: BIGFOOT 11-4-3 PWB Ref Wellpath: BIGFOOT 11-4-3 PWP Rev-B.0				
Start MD [ft]	End MD [ft]	Positional Uncertainty Model	Log Name/Comment	Wellbore
23.00	1711.49	BH NaviTrak (2019) (Standard)		BIGFOOT 11-4-3 PWB
1711.49	11323.45	BH AutoTrak Curve/eXpress (2019) (Short spacing)		BIGFOOT 11-4-3 PWB



Closest Approach Clearance Summary Report

**BIGFOOT 11-4-3 PWP Rev-B.0 - SPE WPTS Stop
Drilling HSE Risk (2017)**
Page 3 of 3



REFERENCE WELLPATH IDENTIFICATION			
Operator	CONFLUENCE RESOURCES	Well	BIGFOOT 11-4-3
Field	WELD COUNTY (NAD83, TRUE NORTH)	API/Legal	
Facility	SEC.11-T04N-R63W	Wellbore	BIGFOOT 11-4-3 PWB
Slot	SLOT#16 BIGFOOT 11-4-3 (2381'FSL & 470'FWL,SEC.11)		

CALCULATION RANGE & CUTOFF		
From: 23.00ft MD	To: 11323.45ft MD	C-C Cutoff: (none)

OFFSET WELL CLEARANCE SUMMARY (17 Offset Wellpaths selected) Ratios are calculated in Closest Approach plane												
Offset Facility	Offset Slot	Offset Well	Offset Wellbore	Offset Wellpath	Wellbore Status	C-C Clearance Distance			Rule Separation Ratio			
						Ref MD [ft]	Min C-C Clear Dist [ft]	Diverging from MD [ft]	Ref MD of Min Ratio [ft]	Min Ratio	Min Ratio Dvrg from [ft]	Rule Status
SEC.11-T04N-R63W	SLOT#15 BIGFOOT 11-3-2 (2406'FSL & 470'FWL,SEC.11)	BIGFOOT 11-3-2	BIGFOOT 11-3-2 PWB	BIGFOOT 11-3-2 PWP Rev-B.0	Planned	23.00	25.50	11323.45	11323.45	0.83	11323.45	FAIL
SEC.11-T04N-R63W	SLOT#17 BIGFOOT 11-5-1 (2356'FSL & 470'FWL,SEC.11)	BIGFOOT 11-5-1	BIGFOOT 11-5-1 PWB	BIGFOOT 11-5-1 PWP Rev-B.0	Planned	23.00	25.50	11311.60	11311.60	0.87	11311.60	FAIL
SEC.11-T04N-R63W	SLOT#18 BIGFOOT 11-3-4 (2331'FSL & 470'FWL,SEC.11)	BIGFOOT 11-3-4	BIGFOOT 11-3-4 PWB	BIGFOOT 11-3-4 PWP Rev-B.0	Planned	23.00	51.08	11223.00	11311.08	1.26	11311.08	PASS
SEC.11-T04N-R63W	SLOT#14 BIGFOOT 11-2-4 (2431'FSL & 470'FWL,SEC.11)	BIGFOOT 11-2-4	BIGFOOT 11-2-4 PWB	BIGFOOT 11-2-4 PWP Rev-B.0	Planned	23.00	51.00	11323.45	11323.45	1.45	11323.45	PASS
SEC.11-T04N-R63W	SLOT#19 BIGFOOT 11-6-2 (2306'FSL & 470'FWL,SEC.11)	BIGFOOT 11-6-2	BIGFOOT 11-6-2 PWB	BIGFOOT 11-6-2 PWP Rev-B.0	Planned	23.00	76.56	11223.00	11313.55	1.80	11313.55	PASS
SEC.10-T04N-R63W	SLOT#02 70 RANCH 10-11-2 (2360'FNL & 514'FEL, SEC.10)	70 RANCH 10-11-2	70 RANCH 10-11-2 AWB	70 RANCH 10-11-2 AWP	Drilling	4770.91	689.10	11323.45	11323.45	2.31	11323.45	PASS
SEC.11-T04N-R63W	SLOT#20 BIGFOOT 11-7-3 (2281'FSL & 470'FWL,SEC.11)	BIGFOOT 11-7-3	BIGFOOT 11-7-3 PWB	BIGFOOT 11-7-3 PWP Rev-B.0	Planned	23.00	98.40	800.00	11323.45	2.59	11323.45	PASS
SEC.11-T04N-R63W	SLOT#01 BIGFOOT 11-8-1 (2455'FSL & 620'FWL,SEC.11)	BIGFOOT 11-8-1	BIGFOOT 11-8-1 PWB	BIGFOOT 11-8-1 PWP Rev-B.0	Planned	1468.19	161.09	1468.19	11323.45	3.40	11323.45	PASS
SEC.10-T04N-R63W	SLOT#01 70 RANCH 10-11-1 (2345'FNL & 514'FEL, SEC.10)	70 RANCH 10-11-1	70 RANCH 10-11-1 AWB	70 RANCH 10-11-1 AWP	Drilling	4353.62	745.51	11323.45	11323.45	3.60	11323.45	PASS
SEC.11-T04N-R63W	SLOT#02 BIGFOOT 11-4-4 (2430'FSL & 620'FWL,SEC.11)	BIGFOOT 11-4-4	BIGFOOT 11-4-4 PWB	BIGFOOT 11-4-4 PWP Rev-B.0	Planned	1324.19	157.34	1324.19	11323.45	3.81	11323.45	PASS
SEC.11-T04N-R63W	SLOT#13 BIGFOOT 11-1-4 (2456'FSL & 470'FWL,SEC.11)	BIGFOOT 11-1-4	BIGFOOT 11-1-4 PWB	BIGFOOT 11-1-4 PWP Rev-B.0	Planned	23.00	76.50	11323.45	11323.45	4.21	11323.45	PASS
SEC.11-T04N-R63W	SLOT#03 BIGFOOT 11-9-2 (2405'FSL & 620'FWL,SEC.11)	BIGFOOT 11-9-2	BIGFOOT 11-9-2 PWB	BIGFOOT 11-9-2 PWP Rev-B.0	Planned	23.00	153.36	1123.00	11323.45	4.39	11323.45	PASS
SEC.11-T04N-R63W	SLOT#04 BIGFOOT 11-10-3 (2380'FSL & 620'FWL,SEC.11)	BIGFOOT 11-10-3	BIGFOOT 11-10-3 PWB	BIGFOOT 11-10-3 PWP Rev-B.0	Planned	23.00	150.61	800.00	11323.45	5.19	11323.45	PASS
SEC.11-T04N-R63W	SLOT#05 BIGFOOT 11-11-1 (2355'FSL & 620'FWL,SEC.11)	BIGFOOT 11-11-1	BIGFOOT 11-11-1 PWB	BIGFOOT 11-11-1 PWP Rev-B.0	Planned	23.00	152.14	800.00	11323.45	6.01	11323.45	PASS
SEC.11-T04N-R63W	SLOT#06 BIGFOOT 11-5-4 (2330'FSL & 620'FWL,SEC.11)	BIGFOOT 11-5-4	BIGFOOT 11-5-4 PWB	BIGFOOT 11-5-4 PWP Rev-B.0	Planned	807.60	157.79	807.60	11323.45	6.41	11323.45	PASS

OFFSET WELL CLEARANCE SUMMARY (17 Offset Wellpaths selected) Ratios are calculated in Closest Approach plane												
Offset Facility	Offset Slot	Offset Well	Offset Wellbore	Offset Wellpath	Wellbore Status	C-C Clearance Distance			Rule Separation Ratio			
						Ref MD [ft]	Min C-C Clear Dist [ft]	Diverging from MD [ft]	Ref MD of Min Ratio [ft]	Min Ratio	Min Ratio Dvrg from [ft]	Rule Status
SEC.11-T04N-R63W	SLOT#07 BIGFOOT 11-12-2 (2305'FSL & 620'FWL,SEC.11)	BIGFOOT 11-12-2	BIGFOOT 11-12-2 PWB	BIGFOOT 11-12-2 PWP Rev-B.0	Planned	23.00	169.78	623.00	11323.45	7.00	11323.45	PASS
SEC.11-T04N-R63W	SLOT#08 BIGFOOT 11-13-3 (2280'FSL & 620'FWL,SEC.11)	BIGFOOT 11-13-3	BIGFOOT 11-13-3 PWB	BIGFOOT 11-13-3 PWP Rev-B.0	Planned	23.00	182.19	523.00	11323.45	7.81	11323.45	PASS