

CONFLUENCE RESOURCES

Location: COLORADO Slot: SLOT#15 BIGFOOT 11-3-2 (2406FSL & 470FWL,SEC.11)
Field: WELD COUNTY (NAD83, TRUE NORTH) Well: BIGFOOT 11-3-2
Facility: SEC.11-T04N-R63W Wellbore: BIGFOOT 11-3-2 PWB

Plot reference wellpath is BIGFOOT 11-3-2 PWP Rev8.0
True vertical depths are referenced to Rig (23) (KB)
Reference wellpath measured depths are referenced to Rig (23) (KB)
Rig (23) (KB) to Mean Sea Level: 4639 feet
Mean Sea Level to Ground level (At Slot: SLOT#15 BIGFOOT 11-3-2 (2406FSL & 470FWL,SEC.11)): -4616 feet
Offset wellpath MDs are referenced to each path's default MD datum
Created by: painseir on 2022-04-26; Database: WellArchitectDB

Location Information

Facility Name			Grid East (US ft)	Grid North (US ft)	Latitude	Longitude
SEC.11-T04N-R63W			3303108.873	1363635.600	40°19'35.3280"N	104°24'46.1880"W
Slot	Local N (ft)	Local E (ft)	Grid East (US ft)	Grid North (US ft)	Latitude	Longitude
SLOT#15 BIGFOOT 11-3-2 (2406FSL & 470FWL,SEC.11)	-51.00	-150.57	3302958.951	1363582.758	40°19'34.8240"N	104°24'48.1320"W
Rig (23) (KB) to Ground level (At Slot: SLOT#15 BIGFOOT 11-3-2 (2406FSL & 470FWL,SEC.11))			23ft			
Mean Sea Level to Ground level (At Slot: SLOT#15 BIGFOOT 11-3-2 (2406FSL & 470FWL,SEC.11))			-4616ft			
Rig (23) (KB) to Mean Sea Level			4639ft			

Hole and Casing Sections

Name	Start MD (ft)	End MD (ft)	Interval (ft)	Start TVD (ft)	End TVD (ft)	Start Local N (ft)	Start Local E (ft)	End Local N (ft)	End Local E (ft)	Wellbore
9.625in Casing Surface	23.00	1716.13	1693.13	23.00	1700.00	0.00	0.00	136.22	-72.65	BIGFOOT 11-3-2 PWB

Survey Program

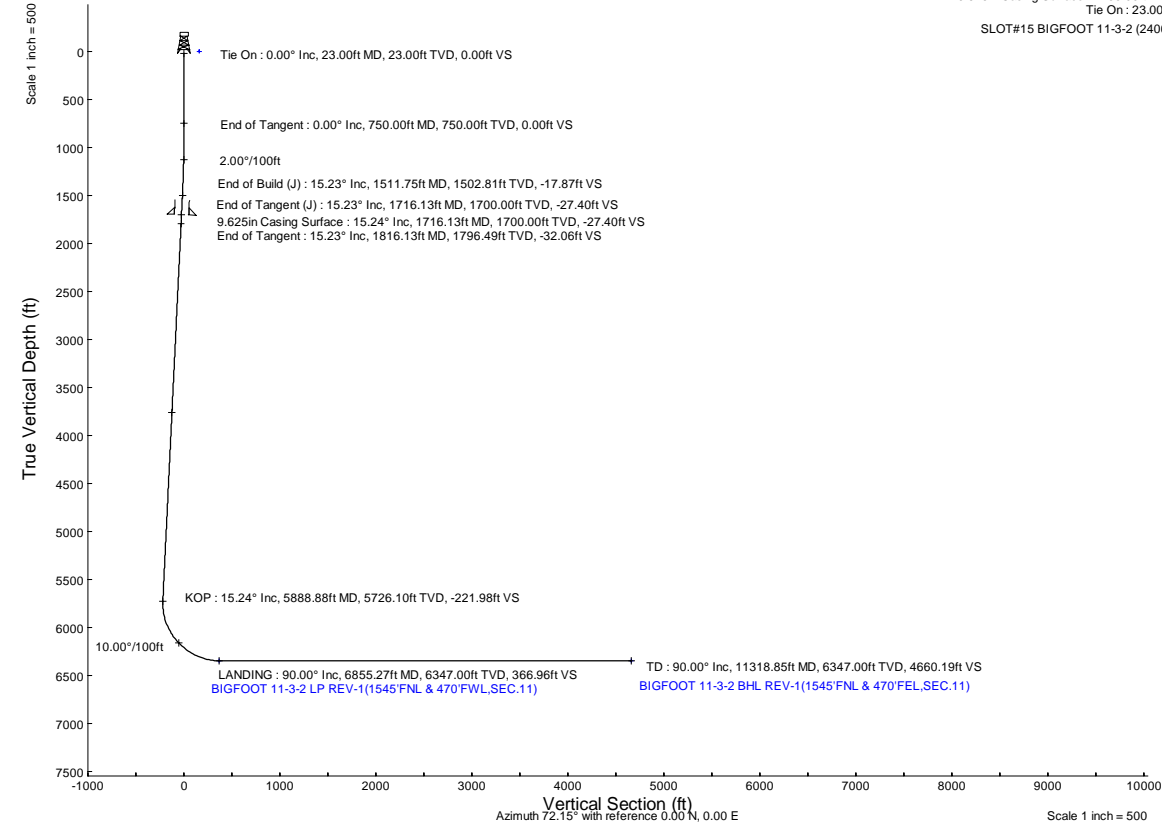
Start MD (ft)	End MD (ft)	Tool	Model	Log Name/Comment	Wellbore
23.00	1716.13	BH NavTrak (2019)	BH NavTrak (2019) (Standard)		BIGFOOT 11-3-2 PWB
1716.13	11318.85	BH AutoTrak Curve/eXpress (2019)	BH AutoTrak Curve/eXpress (2019) (Short spacing)		BIGFOOT 11-3-2 PWB

Bottom Hole Location

MD (ft)	Inc (°)	Az (°)	TVD (ft)	Local N (ft)	Local E (ft)	Grid East (US ft)	Grid North (US ft)	Latitude	Longitude
11318.85	90.000	88.030	6347.00	1428.48	4435.85	3307376.77	1365065.42	40°19'48.9360"N	104°23'50.8560"W

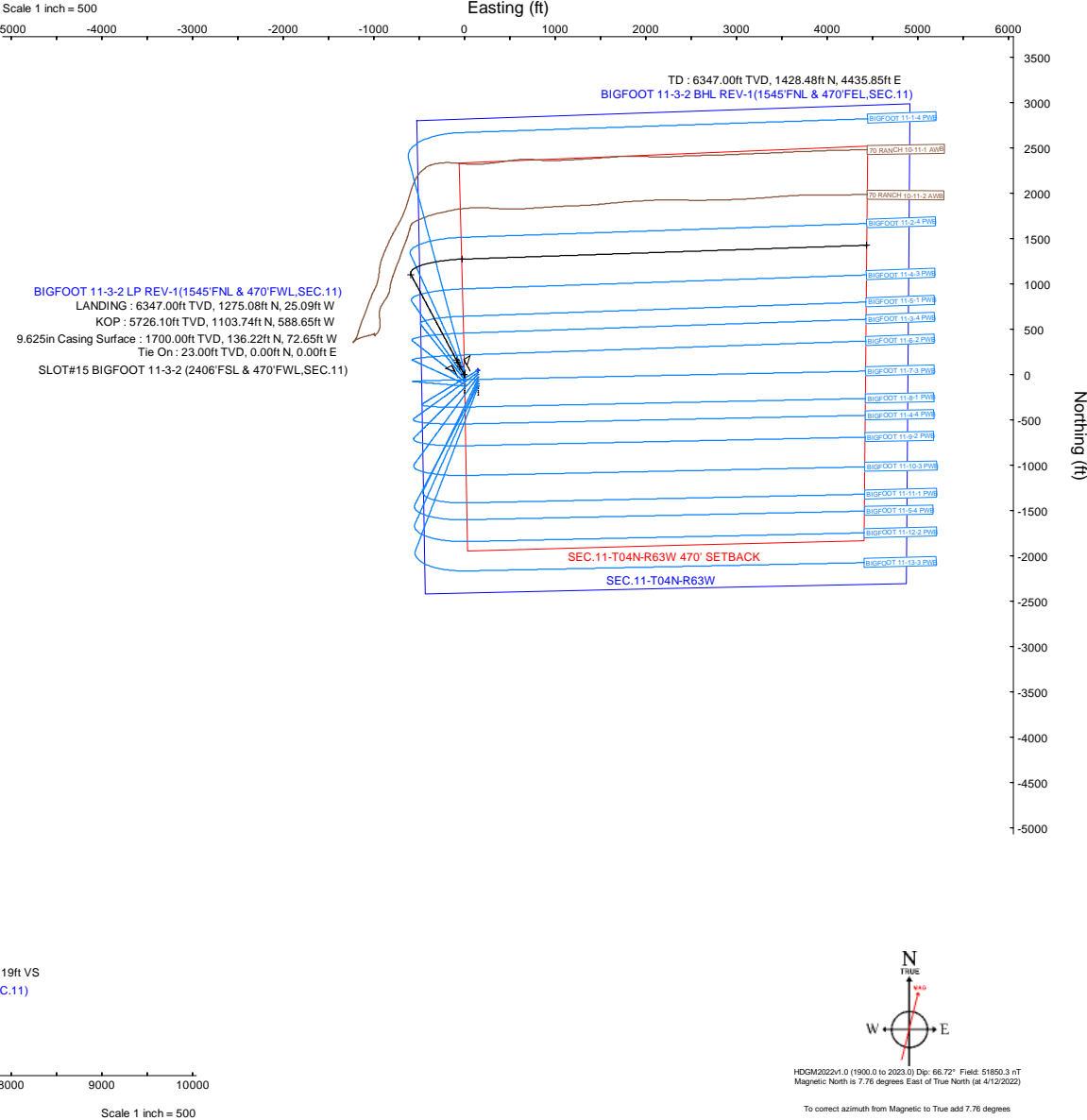
Targets

Name	MD (ft)	TVD (ft)	Local N (ft)	Local E (ft)	Grid East (US ft)	Grid North (US ft)	Latitude	Longitude
SEC.11-T04N-R63W	N/A	-2.50	51.00	150.57	3303108.87	1363635.60	40°19'35.3280"N	104°24'46.1880"W
SEC.11-T04N-R63W 470' SETBACK	N/A	-2.50	51.00	150.57	3303108.87	1363635.60	40°19'35.3280"N	104°24'46.1880"W
BIGFOOT 11-3-2 BHL REV-1(1545FNL & 470FEL,SEC.11)	11318.85	6347.00	1428.48	4435.85	3307376.77	1365065.42	40°19'48.9360"N	104°23'50.8560"W
BIGFOOT 11-3-2 LP REV-1(1545FNL & 470FWL,SEC.11)	6855.27	6347.00	1275.08	-25.09	3302918.24	1364857.37	40°19'47.4240"N	104°24'48.4560"W



Well Profile Data

Design Comment	MD (ft)	Inc (°)	Az (°)	TVD (ft)	Local N (ft)	Local E (ft)	DLS (°/100ft)	VS (ft)
Tie On	23.00	0.000	331.928	23.00	0.00	0.00	0.00	0.00
End of Tangent	750.00	0.000	331.928	750.00	0.00	0.00	0.00	0.00
End of Build (J)	1511.75	15.235	331.928	1502.81	88.84	-47.38	2.00	-17.87
End of Tangent (J)	1716.13	15.235	331.928	1700.00	136.22	-72.65	0.00	-27.40
End of Tangent	1816.13	15.235	331.928	1796.49	159.41	-85.02	0.00	-32.06
KOP	5888.88	15.235	331.928	5726.10	1103.74	-588.65	0.00	-221.98
LANDING	6855.27	90.000	88.030	6347.00	1275.08	-25.09	10.00	366.96
TD	11318.85	90.000	88.030	6347.00	1428.48	4435.85	0.00	4660.19





Planned Wellpath Report

BIGFOOT 11-3-2 PWP Rev-B.0

Page 1 of 8



REFERENCE WELLPATH IDENTIFICATION

Operator	CONFLUENCE RESOURCES	Well	BIGFOOT 11-3-2
Field	WELD COUNTY (NAD83, TRUE NORTH)	API/Legal	
Facility	SEC.11-T04N-R63W	Wellbore	BIGFOOT 11-3-2 PWB
Slot	SLOT#15 BIGFOOT 11-3-2 (2406'FSL & 470'FWL,SEC.11)		

REPORT SETUP INFORMATION

Projection System	NAD83 / Lambert Colorado SP, Northern Zone (501), US feet	Software System	WellArchitect® 6.0
North Reference	True	User	Painsetr
Scale	0.999958	Report Generated	4/26/2022 at 3:30:19 PM
Convergence at slot	0.70° East	Database	WellArchitectDB

WELLPATH LOCATION

	Local coordinates		Grid coordinates		Geographic coordinates	
	North[ft]	East[ft]	Easting[US ft]	Northing[US ft]	Latitude	Longitude
Slot Location	-51.00	-150.57	3302958.95	1363582.76	40.3263400°	-104.4133700°
Facility Reference Pt			3303108.87	1363635.60	40.3264800°	-104.4128300°
Field Reference Pt			3230456.90	1245096.09	40.0032400°	-104.6773400°

WELLPATH DATUM

Calculation method	Minimum curvature	Rig (23') (KB) to Facility Vertical Datum	4639.00ft
Horizontal Reference Pt	Slot	Rig (23') (KB) to Mean Sea Level	4639.00ft
Vertical Reference Pt	Rig (23') (KB)	Rig (23') (KB) to Ground Level at Slot (SLOT#15 BIGFOOT 11-3-2 (2406'FSL & 470'FWL,SEC.11))	23.00ft
MD Reference Pt	Rig (23') (KB)	Section Origin	N 0.00, E 0.00 ft
Field Vertical Reference	Mean Sea Level	Section Azimuth	72.15°



Planned Wellpath Report

BIGFOOT 11-3-2 PWP Rev-B.0

Page 2 of 8



REFERENCE WELLPATH IDENTIFICATION			
Operator	CONFLUENCE RESOURCES	Well	BIGFOOT 11-3-2
Field	WELD COUNTY (NAD83, TRUE NORTH)	API/Legal	
Facility	SEC.11-T04N-R63W	Wellbore	BIGFOOT 11-3-2 PWB
Slot	SLOT#15 BIGFOOT 11-3-2 (2406'FSL & 470'FWL,SEC.11)		

WELLPATH DATA (121 stations) † = interpolated, ‡ = extrapolated station												
MD [ft]	Inclination [°]	Azimuth [°]	TVD [ft]	Vert Sect [ft]	North [ft]	East [ft]	Grid East [US ft]	Grid North [US ft]	Latitude	Longitude	DLS [°/100ft]	Comments
0.00†	0.000	331.928	0.00	0.00	0.00	0.00	3302958.95	1363582.76	40.3263400	-104.4133700	0.00	
23.00	0.000	331.928	23.00	0.00	0.00	0.00	3302958.95	1363582.76	40.3263400	-104.4133700	0.00	Tie On
123.00†	0.000	331.928	123.00	0.00	0.00	0.00	3302958.95	1363582.76	40.3263400	-104.4133700	0.00	
223.00†	0.000	331.928	223.00	0.00	0.00	0.00	3302958.95	1363582.76	40.3263400	-104.4133700	0.00	
323.00†	0.000	331.928	323.00	0.00	0.00	0.00	3302958.95	1363582.76	40.3263400	-104.4133700	0.00	
423.00†	0.000	331.928	423.00	0.00	0.00	0.00	3302958.95	1363582.76	40.3263400	-104.4133700	0.00	
523.00†	0.000	331.928	523.00	0.00	0.00	0.00	3302958.95	1363582.76	40.3263400	-104.4133700	0.00	
623.00†	0.000	331.928	623.00	0.00	0.00	0.00	3302958.95	1363582.76	40.3263400	-104.4133700	0.00	
723.00†	0.000	331.928	723.00	0.00	0.00	0.00	3302958.95	1363582.76	40.3263400	-104.4133700	0.00	
750.00	0.000	331.928	750.00	0.00	0.00	0.00	3302958.95	1363582.76	40.3263400	-104.4133700	0.00	End of Tangent
823.00†	1.460	331.928	822.99	-0.17	0.82	-0.44	3302958.50	1363583.57	40.3263423	-104.4133716	2.00	
923.00†	3.460	331.928	922.89	-0.93	4.61	-2.46	3302956.44	1363587.33	40.3263526	-104.4133788	2.00	
1023.00†	5.460	331.928	1022.59	-2.31	11.47	-6.12	3302952.69	1363594.15	40.3263715	-104.4133919	2.00	
1123.00†	7.460	331.928	1121.95	-4.30	21.40	-11.41	3302947.28	1363604.01	40.3263987	-104.4134109	2.00	
1223.00†	9.460	331.928	1220.85	-6.91	34.38	-18.33	3302940.20	1363616.91	40.3264344	-104.4134358	2.00	
1323.00†	11.460	331.928	1319.19	-10.14	50.39	-26.88	3302931.46	1363632.82	40.3264783	-104.4134664	2.00	
1423.00†	13.460	331.928	1416.83	-13.96	69.43	-37.03	3302921.08	1363651.73	40.3265306	-104.4135028	2.00	
1511.75	15.235	331.928	1502.81	-17.87	88.84	-47.38	3302910.49	1363671.00	40.3265838	-104.4135399	2.00	End of Build (J)
1523.00†	15.235	331.928	1513.66	-18.39	91.44	-48.77	3302909.07	1363673.59	40.3265910	-104.4135449	0.00	
1623.00†	15.235	331.928	1610.15	-23.05	114.63	-61.13	3302896.42	1363696.63	40.3266547	-104.4135893	0.00	
1716.13	15.235	331.928	1700.00	-27.40	136.22	-72.65	3302884.64	1363718.07	40.3267139	-104.4136306	0.00	End of Tangent (J)
1723.00†	15.235	331.928	1706.63	-27.72	137.82	-73.50	3302883.77	1363719.66	40.3267183	-104.4136336	0.00	
1816.13	15.235	331.928	1796.49	-32.06	159.41	-85.02	3302871.99	1363741.11	40.3267776	-104.4136749	0.00	End of Tangent
1823.00†	15.235	331.928	1803.12	-32.38	161.00	-85.87	3302871.12	1363742.69	40.3267819	-104.4136780	0.00	
1923.00†	15.235	331.928	1899.60	-37.04	184.19	-98.23	3302858.47	1363765.72	40.3268456	-104.4137223	0.00	
2023.00†	15.235	331.928	1996.09	-41.71	207.38	-110.60	3302845.82	1363788.75	40.3269092	-104.4137667	0.00	
2123.00†	15.235	331.928	2092.57	-46.37	230.56	-122.96	3302833.18	1363811.79	40.3269729	-104.4138110	0.00	
2223.00†	15.235	331.928	2189.06	-51.03	253.75	-135.33	3302820.53	1363834.82	40.3270365	-104.4138554	0.00	
2323.00†	15.235	331.928	2285.54	-55.70	276.94	-147.70	3302807.88	1363857.85	40.3271002	-104.4138997	0.00	
2423.00†	15.235	331.928	2382.03	-60.36	300.12	-160.06	3302795.23	1363880.88	40.3271638	-104.4139441	0.00	

Planned Wellpath Report

BIGFOOT 11-3-2 PWP Rev-B.0

Page 3 of 8

REFERENCE WELLPATH IDENTIFICATION

Operator	CONFLUENCE RESOURCES	Well	BIGFOOT 11-3-2
Field	WELD COUNTY (NAD83, TRUE NORTH)	API/Legal	
Facility	SEC.11-T04N-R63W	Wellbore	BIGFOOT 11-3-2 PWB
Slot	SLOT#15 BIGFOOT 11-3-2 (2406'FSL & 470'FWL,SEC.11)		

WELLPATH DATA (121 stations) † = interpolated, ‡ = extrapolated station

MD [ft]	Inclination [°]	Azimuth [°]	TVD [ft]	Vert Sect [ft]	North [ft]	East [ft]	Grid East [US ft]	Grid North [US ft]	Latitude	Longitude	DLS [°/100ft]	Comments
2523.00†	15.235	331.928	2478.52	-65.02	323.31	-172.43	3302782.58	1363903.92	40.3272275	-104.4139884	0.00	
2623.00†	15.235	331.928	2575.00	-69.69	346.50	-184.79	3302769.93	1363926.95	40.3272911	-104.4140328	0.00	
2723.00†	15.235	331.928	2671.49	-74.35	369.68	-197.16	3302757.29	1363949.98	40.3273547	-104.4140771	0.00	
2823.00†	15.235	331.928	2767.97	-79.01	392.87	-209.53	3302744.64	1363973.01	40.3274184	-104.4141215	0.00	
2923.00†	15.235	331.928	2864.46	-83.68	416.05	-221.89	3302731.99	1363996.04	40.3274820	-104.4141658	0.00	
3023.00†	15.235	331.928	2960.94	-88.34	439.24	-234.26	3302719.34	1364019.08	40.3275457	-104.4142102	0.00	
3123.00†	15.235	331.928	3057.43	-93.00	462.43	-246.62	3302706.69	1364042.11	40.3276093	-104.4142545	0.00	
3223.00†	15.235	331.928	3153.92	-97.67	485.61	-258.99	3302694.04	1364065.14	40.3276730	-104.4142989	0.00	
3323.00†	15.235	331.928	3250.40	-102.33	508.80	-271.35	3302681.39	1364088.17	40.3277366	-104.4143432	0.00	
3423.00†	15.235	331.928	3346.89	-106.99	531.99	-283.72	3302668.75	1364111.21	40.3278003	-104.4143876	0.00	
3523.00†	15.235	331.928	3443.37	-111.66	555.17	-296.09	3302656.10	1364134.24	40.3278639	-104.4144319	0.00	
3623.00†	15.235	331.928	3539.86	-116.32	578.36	-308.45	3302643.45	1364157.27	40.3279276	-104.4144763	0.00	
3723.00†	15.235	331.928	3636.34	-120.98	601.55	-320.82	3302630.80	1364180.30	40.3279912	-104.4145206	0.00	
3823.00†	15.235	331.928	3732.83	-125.65	624.73	-333.18	3302618.15	1364203.33	40.3280548	-104.4145650	0.00	
3923.00†	15.235	331.928	3829.31	-130.31	647.92	-345.55	3302605.50	1364226.37	40.3281185	-104.4146093	0.00	
4023.00†	15.235	331.928	3925.80	-134.97	671.11	-357.92	3302592.85	1364249.40	40.3281821	-104.4146537	0.00	
4123.00†	15.235	331.928	4022.29	-139.64	694.29	-370.28	3302580.21	1364272.43	40.3282458	-104.4146980	0.00	
4223.00†	15.235	331.928	4118.77	-144.30	717.48	-382.65	3302567.56	1364295.46	40.3283094	-104.4147424	0.00	
4323.00†	15.235	331.928	4215.26	-148.96	740.67	-395.01	3302554.91	1364318.50	40.3283731	-104.4147868	0.00	
4423.00†	15.235	331.928	4311.74	-153.63	763.85	-407.38	3302542.26	1364341.53	40.3284367	-104.4148311	0.00	
4523.00†	15.235	331.928	4408.23	-158.29	787.04	-419.75	3302529.61	1364364.56	40.3285004	-104.4148755	0.00	
4623.00†	15.235	331.928	4504.71	-162.95	810.23	-432.11	3302516.96	1364387.59	40.3285640	-104.4149198	0.00	
4723.00†	15.235	331.928	4601.20	-167.62	833.41	-444.48	3302504.31	1364410.63	40.3286277	-104.4149642	0.00	
4823.00†	15.235	331.928	4697.68	-172.28	856.60	-456.84	3302491.67	1364433.66	40.3286913	-104.4150085	0.00	
4923.00†	15.235	331.928	4794.17	-176.94	879.79	-469.21	3302479.02	1364456.69	40.3287549	-104.4150529	0.00	
5023.00†	15.235	331.928	4890.66	-181.61	902.97	-481.58	3302466.37	1364479.72	40.3288186	-104.4150972	0.00	
5123.00†	15.235	331.928	4987.14	-186.27	926.16	-493.94	3302453.72	1364502.76	40.3288822	-104.4151416	0.00	
5223.00†	15.235	331.928	5083.63	-190.93	949.35	-506.31	3302441.07	1364525.79	40.3289459	-104.4151859	0.00	
5323.00†	15.235	331.928	5180.11	-195.60	972.53	-518.67	3302428.42	1364548.82	40.3290095	-104.4152303	0.00	
5423.00†	15.235	331.928	5276.60	-200.26	995.72	-531.04	3302415.77	1364571.85	40.3290732	-104.4152746	0.00	



Planned Wellpath Report

BIGFOOT 11-3-2 PWP Rev-B.0

Page 4 of 8



REFERENCE WELLPATH IDENTIFICATION

Operator	CONFLUENCE RESOURCES	Well	BIGFOOT 11-3-2
Field	WELD COUNTY (NAD83, TRUE NORTH)	API/Legal	
Facility	SEC.11-T04N-R63W	Wellbore	BIGFOOT 11-3-2 PWB
Slot	SLOT#15 BIGFOOT 11-3-2 (2406'FSL & 470'FWL,SEC.11)		

WELLPATH DATA (121 stations) † = interpolated, ‡ = extrapolated station

MD [ft]	Inclination [°]	Azimuth [°]	TVD [ft]	Vert Sect [ft]	North [ft]	East [ft]	Grid East [US ft]	Grid North [US ft]	Latitude	Longitude	DLS [°/100ft]	Comments
5523.00†	15.235	331.928	5373.08	-204.92	1018.91	-543.41	3302403.13	1364594.89	40.3291368	-104.4153190	0.00	
5623.00†	15.235	331.928	5469.57	-209.59	1042.09	-555.77	3302390.48	1364617.92	40.3292005	-104.4153633	0.00	
5723.00†	15.235	331.928	5566.05	-214.25	1065.28	-568.14	3302377.83	1364640.95	40.3292641	-104.4154077	0.00	
5823.00†	15.235	331.928	5662.54	-218.91	1088.47	-580.50	3302365.18	1364663.98	40.3293278	-104.4154521	0.00	
5888.88	15.235	331.928	5726.10	-221.98	1103.74	-588.65	3302356.85	1364679.16	40.3293697	-104.4154813	0.00	KOP
5923.00†	14.110	344.680	5759.12	-222.60	1111.71	-591.86	3302353.54	1364687.09	40.3293916	-104.4154928	10.00	
6023.00†	15.293	24.592	5856.09	-213.13	1135.52	-589.59	3302355.52	1364710.92	40.3294569	-104.4154846	10.00	
6123.00†	21.559	49.785	5951.06	-187.18	1159.44	-570.02	3302374.79	1364735.07	40.3295226	-104.4154145	10.00	
6223.00†	29.861	62.816	6041.15	-145.52	1182.73	-533.75	3302410.77	1364758.81	40.3295865	-104.4152844	10.00	
6323.00†	38.915	70.396	6123.63	-89.42	1204.70	-481.89	3302462.36	1364781.41	40.3296468	-104.4150984	10.00	
6423.00†	48.296	75.442	6195.98	-20.58	1224.67	-416.00	3302527.99	1364802.19	40.3297016	-104.4148621	10.00	
6523.00†	57.841	79.185	6256.01	58.90	1242.04	-338.10	3302605.68	1364820.51	40.3297493	-104.4145826	10.00	
6623.00†	67.475	82.209	6301.89	146.61	1256.28	-250.54	3302693.05	1364835.82	40.3297884	-104.4142686	10.00	
6723.00†	77.158	84.834	6332.24	239.88	1266.96	-155.99	3302787.46	1364847.66	40.3298177	-104.4139295	10.00	
6823.00†	86.866	87.263	6346.12	335.88	1273.75	-57.32	3302886.03	1364855.66	40.3298364	-104.4135756	10.00	
6855.27	90.000	88.030	6347.00†	366.96	1275.08	-25.09	3302918.24	1364857.37	40.3298400	-104.4134600	10.00	LANDING
6923.00†	90.000	88.030	6347.00	432.11	1277.40	42.60	3302985.89	1364860.53	40.3298464	-104.4132172	0.00	
7023.00†	90.000	88.030	6347.00	528.29	1280.84	142.54	3303085.78	1364865.19	40.3298558	-104.4128588	0.00	
7123.00†	90.000	88.030	6347.00	624.48	1284.28	242.48	3303185.67	1364869.85	40.3298653	-104.4125003	0.00	
7223.00†	90.000	88.030	6347.00	720.66	1287.71	342.42	3303285.55	1364874.51	40.3298747	-104.4121419	0.00	
7323.00†	90.000	88.030	6347.00	816.84	1291.15	442.36	3303385.44	1364879.18	40.3298841	-104.4117834	0.00	
7423.00†	90.000	88.030	6347.00	913.03	1294.59	542.30	3303485.33	1364883.84	40.3298935	-104.4114249	0.00	
7523.00†	90.000	88.030	6347.00	1009.21	1298.03	642.24	3303585.21	1364888.50	40.3299030	-104.4110665	0.00	
7623.00†	90.000	88.030	6347.00	1105.39	1301.46	742.18	3303685.10	1364893.16	40.3299124	-104.4107080	0.00	
7723.00†	90.000	88.030	6347.00	1201.58	1304.90	842.13	3303784.99	1364897.82	40.3299218	-104.4103496	0.00	
7823.00†	90.000	88.030	6347.00	1297.76	1308.34	942.07	3303884.87	1364902.48	40.3299312	-104.4099911	0.00	
7923.00†	90.000	88.030	6347.00	1393.94	1311.77	1042.01	3303984.76	1364907.14	40.3299407	-104.4096327	0.00	
8023.00†	90.000	88.030	6347.00	1490.13	1315.21	1141.95	3304084.65	1364911.80	40.3299501	-104.4092742	0.00	
8123.00†	90.000	88.030	6347.00	1586.31	1318.65	1241.89	3304184.53	1364916.46	40.3299595	-104.4089158	0.00	
8223.00†	90.000	88.030	6347.00	1682.49	1322.08	1341.83	3304284.42	1364921.13	40.3299689	-104.4085573	0.00	

Planned Wellpath Report

BIGFOOT 11-3-2 PWP Rev-B.0

Page 5 of 8

REFERENCE WELLPATH IDENTIFICATION

Operator	CONFLUENCE RESOURCES	Well	BIGFOOT 11-3-2
Field	WELD COUNTY (NAD83, TRUE NORTH)	API/Legal	
Facility	SEC.11-T04N-R63W	Wellbore	BIGFOOT 11-3-2 PWB
Slot	SLOT#15 BIGFOOT 11-3-2 (2406'FSL & 470'FWL,SEC.11)		

WELLPATH DATA (121 stations) † = interpolated, ‡ = extrapolated station

MD [ft]	Inclination [°]	Azimuth [°]	TVD [ft]	Vert Sect [ft]	North [ft]	East [ft]	Grid East [US ft]	Grid North [US ft]	Latitude	Longitude	DLS [°/100ft]	Comments
8323.00†	90.000	88.030	6347.00	1778.68	1325.52	1441.77	3304384.31	1364925.79	40.3299783	-104.4081988	0.00	
8423.00†	90.000	88.030	6347.00	1874.86	1328.96	1541.71	3304484.19	1364930.45	40.3299878	-104.4078404	0.00	
8523.00†	90.000	88.030	6347.00	1971.04	1332.39	1641.65	3304584.08	1364935.11	40.3299972	-104.4074819	0.00	
8623.00†	90.000	88.030	6347.00	2067.23	1335.83	1741.59	3304683.97	1364939.77	40.3300066	-104.4071235	0.00	
8723.00†	90.000	88.030	6347.00	2163.41	1339.27	1841.53	3304783.86	1364944.43	40.3300160	-104.4067650	0.00	
8823.00†	90.000	88.030	6347.00	2259.59	1342.70	1941.48	3304883.74	1364949.09	40.3300254	-104.4064066	0.00	
8923.00†	90.000	88.030	6347.00	2355.78	1346.14	2041.42	3304983.63	1364953.75	40.3300348	-104.4060481	0.00	
9023.00†	90.000	88.030	6347.00	2451.96	1349.58	2141.36	3305083.52	1364958.41	40.3300442	-104.4056897	0.00	
9123.00†	90.000	88.030	6347.00	2548.14	1353.02	2241.30	3305183.40	1364963.07	40.3300537	-104.4053312	0.00	
9223.00†	90.000	88.030	6347.00	2644.33	1356.45	2341.24	3305283.29	1364967.74	40.3300631	-104.4049727	0.00	
9323.00†	90.000	88.030	6347.00	2740.51	1359.89	2441.18	3305383.18	1364972.40	40.3300725	-104.4046143	0.00	
9423.00†	90.000	88.030	6347.00	2836.69	1363.33	2541.12	3305483.06	1364977.06	40.3300819	-104.4042558	0.00	
9523.00†	90.000	88.030	6347.00	2932.88	1366.76	2641.06	3305582.95	1364981.72	40.3300913	-104.4038974	0.00	
9623.00†	90.000	88.030	6347.00	3029.06	1370.20	2741.00	3305682.84	1364986.38	40.3301007	-104.4035389	0.00	
9723.00†	90.000	88.030	6347.00	3125.24	1373.64	2840.94	3305782.72	1364991.04	40.3301101	-104.4031805	0.00	
9823.00†	90.000	88.030	6347.00	3221.43	1377.07	2940.88	3305882.61	1364995.70	40.3301195	-104.4028220	0.00	
9923.00†	90.000	88.030	6347.00	3317.61	1380.51	3040.83	3305982.50	1365000.36	40.3301289	-104.4024635	0.00	
10023.00†	90.000	88.030	6347.00	3413.79	1383.95	3140.77	3306082.38	1365005.02	40.3301383	-104.4021051	0.00	
10123.00†	90.000	88.030	6347.00	3509.98	1387.38	3240.71	3306182.27	1365009.69	40.3301477	-104.4017466	0.00	
10223.00†	90.000	88.030	6347.00	3606.16	1390.82	3340.65	3306282.16	1365014.35	40.3301571	-104.4013882	0.00	
10323.00†	90.000	88.030	6347.00	3702.34	1394.26	3440.59	3306382.05	1365019.01	40.3301665	-104.4010297	0.00	
10423.00†	90.000	88.030	6347.00	3798.53	1397.69	3540.53	3306481.93	1365023.67	40.3301759	-104.4006713	0.00	
10523.00†	90.000	88.030	6347.00	3894.71	1401.13	3640.47	3306581.82	1365028.33	40.3301853	-104.4003128	0.00	
10623.00†	90.000	88.030	6347.00	3990.89	1404.57	3740.41	3306681.71	1365032.99	40.3301947	-104.3999543	0.00	
10723.00†	90.000	88.030	6347.00	4087.08	1408.01	3840.35	3306781.59	1365037.65	40.3302041	-104.3995959	0.00	
10823.00†	90.000	88.030	6347.00	4183.26	1411.44	3940.29	3306881.48	1365042.31	40.3302135	-104.3992374	0.00	
10923.00†	90.000	88.030	6347.00	4279.44	1414.88	4040.23	3306981.37	1365046.97	40.3302228	-104.3988790	0.00	
11023.00†	90.000	88.030	6347.00	4375.63	1418.32	4140.18	3307081.25	1365051.63	40.3302322	-104.3985205	0.00	
11123.00†	90.000	88.030	6347.00	4471.81	1421.75	4240.12	3307181.14	1365056.30	40.3302416	-104.3981621	0.00	
11223.00†	90.000	88.030	6347.00	4567.99	1425.19	4340.06	3307281.03	1365060.96	40.3302510	-104.3978036	0.00	

REFERENCE WELLPATH IDENTIFICATION

Operator	CONFLUENCE RESOURCES	Well	BIGFOOT 11-3-2
Field	WELD COUNTY (NAD83, TRUE NORTH)	API/Legal	
Facility	SEC.11-T04N-R63W	Wellbore	BIGFOOT 11-3-2 PWB
Slot	SLOT#15 BIGFOOT 11-3-2 (2406'FSL & 470'FWL,SEC.11)		

WELLPATH DATA (121 stations)

MD [ft]	Inclination [°]	Azimuth [°]	TVD [ft]	Vert Sect [ft]	North [ft]	East [ft]	Grid East [US ft]	Grid North [US ft]	Latitude	Longitude	DLS [°/100ft]	Comments
11318.85	90.000	88.030	6347.00 ²	4660.19	1428.48	4435.85	3307376.77	1365065.42	40.3302600	-104.3974600	0.00	TD

HOLE & CASING SECTIONS

- Ref Wellbore: BIGFOOT 11-3-2 PWB Ref Wellpath: BIGFOOT 11-3-2 PWP Rev-B.0

String/Diameter	Start MD [ft]	End MD [ft]	Interval [ft]	Start TVD [ft]	End TVD [ft]	Start N/S [ft]	Start E/W [ft]	End N/S [ft]	End E/W [ft]
9.625in Casing Surface	23.00	1716.13	1693.13	23.00	1700.00	0.00	0.00	136.22	-72.65

TARGETS

Name	MD [ft]	TVD [ft]	North [ft]	East [ft]	Grid East [US ft]	Grid North [US ft]	Latitude	Longitude	Shape
SEC.11-T04N-R63W	N/A	-2.50	51.00	150.57	3303108.87	1363635.60	40.3264800	-104.4128300	polygon
2D Polygon: dimensions not calculated									
SEC.11-T04N-R63W 470' SETBACK	N/A	-2.50	51.00	150.57	3303108.87	1363635.60	40.3264800	-104.4128300	polygon
2D Polygon: dimensions not calculated									
2) BIGFOOT 11-3-2 BHL REV-1 (1545'FNL & 470'FEL,SEC.11)	11318.85	6347.00	1428.48	4435.85	3307376.77	1365065.42	40.3302600	-104.3974600	point
1) BIGFOOT 11-3-2 LP REV-1 (1545'FNL & 470'FWL,SEC.11)	6855.27	6347.00	1275.08	-25.09	3302918.24	1364857.37	40.3298400	-104.4134600	point



Planned Wellpath Report

BIGFOOT 11-3-2 PWP Rev-B.0

Page 7 of 8



REFERENCE WELLPATH IDENTIFICATION

Operator	CONFLUENCE RESOURCES	Well	BIGFOOT 11-3-2
Field	WELD COUNTY (NAD83, TRUE NORTH)	API/Legal	
Facility	SEC.11-T04N-R63W	Wellbore	BIGFOOT 11-3-2 PWB
Slot	SLOT#15 BIGFOOT 11-3-2 (2406'FSL & 470'FWL,SEC.11)		

SURVEY PROGRAM - Ref Wellbore: BIGFOOT 11-3-2 PWB Ref Wellpath: BIGFOOT 11-3-2 PWP Rev-B.0

Start MD [ft]	End MD [ft]	Positional Uncertainty Model	Log Name/Comment	Wellbore
23.00	1716.13	BH NaviTrak (2019) (Standard)		BIGFOOT 11-3-2 PWB
1716.13	11318.85	BH AutoTrak Curve/eXpress (2019) (Short spacing)		BIGFOOT 11-3-2 PWB



Planned Wellpath Report

BIGFOOT 11-3-2 PWP Rev-B.0

Page 8 of 8



REFERENCE WELLPATH IDENTIFICATION

Operator	CONFLUENCE RESOURCES	Well	BIGFOOT 11-3-2
Field	WELD COUNTY (NAD83, TRUE NORTH)	API/Legal	
Facility	SEC.11-T04N-R63W	Wellbore	BIGFOOT 11-3-2 PWB
Slot	SLOT#15 BIGFOOT 11-3-2 (2406'FSL & 470'FWL,SEC.11)		

DESIGN COMMENTS

MD [ft]	Inclination [°]	Azimuth [°]	TVD [ft]	Comment
23.00	0.000	331.928	23.00	Tie On
750.00	0.000	331.928	750.00	End of Tangent
1511.75	15.235	331.928	1502.81	End of Build (J)
1716.13	15.235	331.928	1700.00	End of Tangent (J)
1816.13	15.235	331.928	1796.49	End of Tangent
5888.88	15.235	331.928	5726.10	KOP
6855.27	90.000	88.030	6347.00	LANDING
11318.85	90.000	88.030	6347.00	TD



Closest Approach Clearance Summary Report

BIGFOOT 11-3-2 PWP Rev-B.0 - SPE WPTS Stop
Drilling HSE Risk (2017)
Page 1 of 3



REFERENCE WELLPATH IDENTIFICATION			
Operator	CONFLUENCE RESOURCES	Well	BIGFOOT 11-3-2
Field	WELD COUNTY (NAD83, TRUE NORTH)	API/Legal	
Facility	SEC.11-T04N-R63W	Wellbore	BIGFOOT 11-3-2 PWB
Slot	SLOT#15 BIGFOOT 11-3-2 (2406'FSL & 470'FWL,SEC.11)		

REPORT SETUP INFORMATION			
Projection System	NAD83 / Lambert Colorado SP, Northern Zone (501), US feet	Software System	WellArchitect® 6.0
North Reference	True	User	Painsetr
Scale	0.999958	Report Generated	4/26/2022 at 3:30:23 PM
Convergence at slot	0.70° East	Database	WellArchitectDB

WELLPATH LOCATION						
	Local coordinates		Grid coordinates		Geographic coordinates	
	North[ft]	East[ft]	Easting[US ft]	Northing[US ft]	Latitude	Longitude
Slot Location	-51.00	-150.57	3302958.95	1363582.76	40.3263400°	-104.4133700°
Facility Reference Pt			3303108.87	1363635.60	40.3264800°	-104.4128300°
Field Reference Pt			3230456.90	1245096.09	40.0032400°	-104.6773400°

WELLPATH DATUM			
Calculation method	Minimum Curvature	Rig (23') (KB) to Facility Vertical Datum	4639.00ft
Horizontal Reference Pt	Slot	Rig (23') (KB) to Mean Sea Level	4639.00ft
Vertical Reference Pt	Rig (23') (KB)	Rig (23') (KB) to Ground Level at Slot (SLOT#15 BIGFOOT 11-3-2 (2406'FSL & 470'FWL,SEC.11))	23.00ft
MD Reference Pt	Rig (23') (KB)		
Field Vertical Reference	Mean Sea Level		

POSITIONAL UNCERTAINTY CALCULATION SETTINGS					
Ellipse Confidence Limit	3.50 Std Dev	Ellipse Start MD	23.00ft	Surface Position Uncertainty	included
Declination	7.76° East of TN	Dip Angle	66.72°	Mag Field Strength	51850 nT
Slot Surface Uncertainty @1SD		Horizontal	0.100ft	Vertical	1.000ft
Facility Surface Uncertainty @1SD		Horizontal	8.200ft	Vertical	3.000ft
Positional Uncertainty values in the WELLPATH DATA table are the projection of the ellipsoid of uncertainty onto the vertical and horizontal planes					



Closest Approach Clearance Summary Report

BIGFOOT 11-3-2 PWP Rev-B.0 - SPE WPTS Stop
Drilling HSE Risk (2017)
Page 2 of 3



REFERENCE WELLPATH IDENTIFICATION			
Operator	CONFLUENCE RESOURCES	Well	BIGFOOT 11-3-2
Field	WELD COUNTY (NAD83, TRUE NORTH)	API/Legal	
Facility	SEC.11-T04N-R63W	Wellbore	BIGFOOT 11-3-2 PWB
Slot	SLOT#15 BIGFOOT 11-3-2 (2406'FSL & 470'FWL,SEC.11)		

PROXIMITY-SCAN RULE			
Rule Name	SPE WPTS Stop Drilling HSE Risk (2017)	Rule Based On	Ratio
Plane of Rule	Closest Approach	Threshold Value	1.00
Include Casing & Hole Size	yes	Apply Cone of Safety	no

HOLE & CASING SECTIONS									
- Ref Wellbore: BIGFOOT 11-3-2 PWB Ref Wellpath: BIGFOOT 11-3-2 PWP Rev-B.0									
String/Diameter	Start MD [ft]	End MD [ft]	Interval [ft]	Start TVD [ft]	End TVD [ft]	Start N/S [ft]	Start E/W [ft]	End N/S [ft]	End E/W [ft]
9.625in Casing Surface	23.00	1716.13	1693.13	23.00	1700.00	0.00	0.00	136.22	-72.65

SURVEY PROGRAM - Ref Wellbore: BIGFOOT 11-3-2 PWB Ref Wellpath: BIGFOOT 11-3-2 PWP Rev-B.0				
Start MD [ft]	End MD [ft]	Positional Uncertainty Model	Log Name/Comment	Wellbore
23.00	1716.13	BH NaviTrak (2019) (Standard)		BIGFOOT 11-3-2 PWB
1716.13	11318.85	BH AutoTrak Curve/eXpress (2019) (Short spacing)		BIGFOOT 11-3-2 PWB



Closest Approach Clearance Summary Report

**BIGFOOT 11-3-2 PWP Rev-B.0 - SPE WPTS Stop
Drilling HSE Risk (2017)**
Page 3 of 3



REFERENCE WELLPATH IDENTIFICATION			
Operator	CONFLUENCE RESOURCES	Well	BIGFOOT 11-3-2
Field	WELD COUNTY (NAD83, TRUE NORTH)	API/Legal	
Facility	SEC.11-T04N-R63W	Wellbore	BIGFOOT 11-3-2 PWB
Slot	SLOT#15 BIGFOOT 11-3-2 (2406'FSL & 470'FWL,SEC.11)		

CALCULATION RANGE & CUTOFF		
From: 23.00ft MD	To: 11318.85ft MD	C-C Cutoff: (none)

OFFSET WELL CLEARANCE SUMMARY (17 Offset Wellpaths selected) Ratios are calculated in Closest Approach plane												
Offset Facility	Offset Slot	Offset Well	Offset Wellbore	Offset Wellpath	Wellbore Status	C-C Clearance Distance			Rule Separation Ratio			
						Ref MD [ft]	Min C-C Clear Dist [ft]	Diverging from MD [ft]	Ref MD of Min Ratio [ft]	Min Ratio	Min Ratio Dvrg from [ft]	Rule Status
SEC.11-T04N-R63W	SLOT#16 BIGFOOT 11-4-3 (2381'FSL & 470'FWL,SEC.11)	BIGFOOT 11-4-3	BIGFOOT 11-4-3 PWB	BIGFOOT 11-4-3 PWP Rev-B.0	Planned	23.00	25.50	11305.31	11305.31	0.83	11305.31	FAIL
SEC.11-T04N-R63W	SLOT#14 BIGFOOT 11-2-4 (2431'FSL & 470'FWL,SEC.11)	BIGFOOT 11-2-4	BIGFOOT 11-2-4 PWB	BIGFOOT 11-2-4 PWP Rev-B.0	Planned	23.00	25.50	11318.85	11318.85	1.01	11318.85	WARN
SEC.10-T04N-R63W	SLOT#02 70 RANCH 10-11-2 (2360'FNL & 514'FEL, SEC.10)	70 RANCH 10-11-2	70 RANCH 10-11-2 AWB	70 RANCH 10-11-2 AWP	Drilling	5583.81	447.20	11318.85	11318.85	1.50	11318.85	PASS
SEC.11-T04N-R63W	SLOT#17 BIGFOOT 11-5-1 (2356'FSL & 470'FWL,SEC.11)	BIGFOOT 11-5-1	BIGFOOT 11-5-1 PWB	BIGFOOT 11-5-1 PWP Rev-B.0	Planned	23.00	51.00	11223.00	11303.40	1.54	11303.40	PASS
SEC.11-T04N-R63W	SLOT#18 BIGFOOT 11-3-4 (2331'FSL & 470'FWL,SEC.11)	BIGFOOT 11-3-4	BIGFOOT 11-3-4 PWB	BIGFOOT 11-3-4 PWP Rev-B.0	Planned	23.00	76.56	11223.00	11310.43	2.10	11310.43	PASS
SEC.11-T04N-R63W	SLOT#19 BIGFOOT 11-6-2 (2306'FSL & 470'FWL,SEC.11)	BIGFOOT 11-6-2	BIGFOOT 11-6-2 PWB	BIGFOOT 11-6-2 PWP Rev-B.0	Planned	23.00	102.04	11223.00	11318.85	2.57	11318.85	PASS
SEC.10-T04N-R63W	SLOT#01 70 RANCH 10-11-1 (2345'FNL & 514'FEL, SEC.10)	70 RANCH 10-11-1	70 RANCH 10-11-1 AWB	70 RANCH 10-11-1 AWP	Drilling	4494.29	620.39	11318.85	11318.85	2.72	11318.85	PASS
SEC.11-T04N-R63W	SLOT#20 BIGFOOT 11-7-3 (2281'FSL & 470'FWL,SEC.11)	BIGFOOT 11-7-3	BIGFOOT 11-7-3 PWB	BIGFOOT 11-7-3 PWP Rev-B.0	Planned	23.00	123.90	750.00	11318.85	3.39	11318.85	PASS
SEC.11-T04N-R63W	SLOT#13 BIGFOOT 11-1-4 (2456'FSL & 470'FWL,SEC.11)	BIGFOOT 11-1-4	BIGFOOT 11-1-4 PWB	BIGFOOT 11-1-4 PWP Rev-B.0	Planned	23.00	51.00	11318.85	11318.85	3.45	11318.85	PASS
SEC.11-T04N-R63W	SLOT#01 BIGFOOT 11-8-1 (2455'FSL & 620'FWL,SEC.11)	BIGFOOT 11-8-1	BIGFOOT 11-8-1 PWB	BIGFOOT 11-8-1 PWP Rev-B.0	Planned	23.00	158.97	1223.00	11318.85	4.17	11318.85	PASS
SEC.11-T04N-R63W	SLOT#02 BIGFOOT 11-4-4 (2430'FSL & 620'FWL,SEC.11)	BIGFOOT 11-4-4	BIGFOOT 11-4-4 PWB	BIGFOOT 11-4-4 PWP Rev-B.0	Planned	23.00	152.71	750.00	11318.85	4.64	11318.85	PASS
SEC.11-T04N-R63W	SLOT#03 BIGFOOT 11-9-2 (2405'FSL & 620'FWL,SEC.11)	BIGFOOT 11-9-2	BIGFOOT 11-9-2 PWB	BIGFOOT 11-9-2 PWP Rev-B.0	Planned	23.00	150.61	750.00	11318.85	5.18	11318.85	PASS
SEC.11-T04N-R63W	SLOT#04 BIGFOOT 11-10-3 (2380'FSL & 620'FWL,SEC.11)	BIGFOOT 11-10-3	BIGFOOT 11-10-3 PWB	BIGFOOT 11-10-3 PWP Rev-B.0	Planned	23.00	152.14	750.00	11318.85	5.99	11318.85	PASS
SEC.11-T04N-R63W	SLOT#05 BIGFOOT 11-11-1 (2355'FSL & 620'FWL,SEC.11)	BIGFOOT 11-11-1	BIGFOOT 11-11-1 PWB	BIGFOOT 11-11-1 PWP Rev-B.0	Planned	23.00	157.84	750.00	11318.85	6.80	11318.85	PASS
SEC.11-T04N-R63W	SLOT#06 BIGFOOT 11-5-4 (2330'FSL & 620'FWL,SEC.11)	BIGFOOT 11-5-4	BIGFOOT 11-5-4 PWB	BIGFOOT 11-5-4 PWP Rev-B.0	Planned	23.00	167.27	750.00	11318.85	7.22	11318.85	PASS

OFFSET WELL CLEARANCE SUMMARY (17 Offset Wellpaths selected) Ratios are calculated in Closest Approach plane												
Offset Facility	Offset Slot	Offset Well	Offset Wellbore	Offset Wellpath	Wellbore Status	C-C Clearance Distance			Rule Separation Ratio			
						Ref MD [ft]	Min C-C Clear Dist [ft]	Diverging from MD [ft]	Ref MD of Min Ratio [ft]	Min Ratio	Min Ratio Dvrg from [ft]	Rule Status
SEC.11-T04N-R63W	SLOT#07 BIGFOOT 11-12-2 (2305'FSL & 620'FWL,SEC.11)	BIGFOOT 11-12-2	BIGFOOT 11-12-2 PWB	BIGFOOT 11-12-2 PWP Rev-B.0	Planned	23.00	182.19	623.00	11318.85	7.79	11318.85	PASS
SEC.11-T04N-R63W	SLOT#08 BIGFOOT 11-13-3 (2280'FSL & 620'FWL,SEC.11)	BIGFOOT 11-13-3	BIGFOOT 11-13-3 PWB	BIGFOOT 11-13-3 PWP Rev-B.0	Planned	23.00	197.13	523.00	11318.85	8.60	11318.85	PASS