

CONFLUENCE RESOURCES



Location: COLORADO Slot: SLOT#14 BIGFOOT 11-2-4 (2431'FSL & 470'FWL,SEC.11)

Field: WELD COUNTY (NAD83, TRUE NORTH) Well: BIGFOOT 11-2-4

Facility: SEC.11-T04N-R63W Wellbore: BIGFOOT 11-2-4 PWB

Plot reference wellpath is BIGFOOT 11-2-4 PWP RevB.0

True vertical depths are referenced to Rig (23) (KB)

Reference wellpath measured depths are referenced to Rig (23) (KB)

Rig (23) (KB) to Mean Sea Level: 4639 feet

Mean Sea Level to Ground level (At Slot: SLOT#14 BIGFOOT 11-2-4 (2431'FSL & 470'FWL,SEC.11)): -4616 feet

Offset wellpath MDs are referenced to each path's default MD datum

Grid System: NAD83 / Lambert Colorado SP, Northern Zone (501), US feet

North Reference: True north

Scale: True distance

Coordinates are in feet referenced to Slot

Depths are in feet

Created by: painsestr on 2022-04-26; Database: WellArchitectDB

Location Information

| Facility Name | Grid East (US ft) | Grid North (US ft) | Latitude | Longitude |
|--|-------------------|--------------------|-----------------|------------------|
| SEC.11-T04N-R63W | 3303108.873 | 1363635.600 | 40°19'35.3280"N | 104°24'46.1880"W |
| Slot | Local N (ft) | Local E (ft) | Local N (ft) | Local E (ft) |
| SLOT#14 BIGFOOT 11-2-4 (2431'FSL & 470'FWL,SEC.11) | -25.50 | -150.57 | 3302958.638 | 1363608.256 |
| Rig (23) (KB) to Ground level (At Slot: SLOT#14 BIGFOOT 11-2-4 (2431'FSL & 470'FWL,SEC.11)) | | | | 23ft |
| Mean Sea Level to Ground level (At Slot: SLOT#14 BIGFOOT 11-2-4 (2431'FSL & 470'FWL,SEC.11)) | | | | -4616ft |
| Rig (23) (KB) to Mean Sea Level | | | | 4639ft |

Hole and Casing Sections

| Name | Start MD (ft) | End MD (ft) | Interval (ft) | Start TVD (ft) | End TVD (ft) | Start Local N (ft) | Start Local E (ft) | End Local N (ft) | End Local E (ft) | Wellbore |
|------------------------|---------------|-------------|---------------|----------------|--------------|--------------------|--------------------|------------------|------------------|--------------------|
| 9.625in Casing Surface | 23.00 | 1719.37 | 1696.37 | 23.00 | 1700.00 | 0.00 | 0.00 | 157.61 | -71.88 | BIGFOOT 11-2-4 PWB |

Survey Program

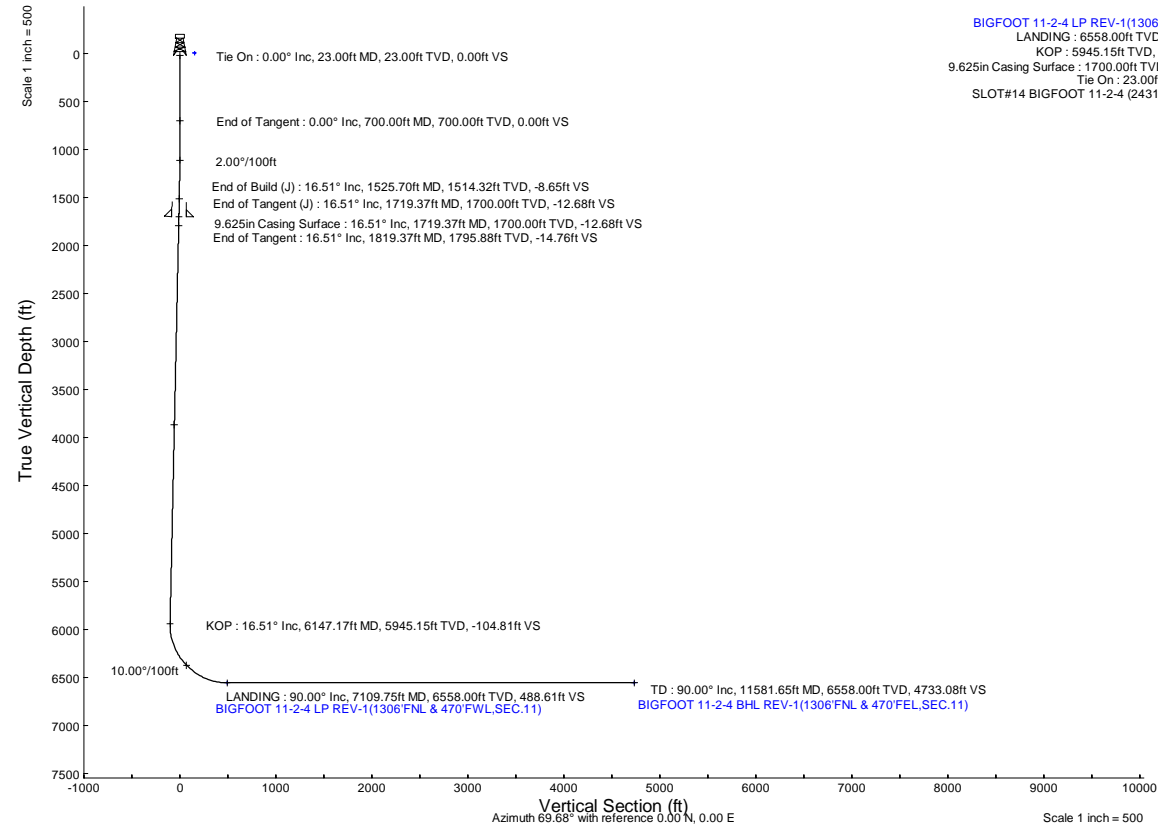
| Start MD (ft) | End MD (ft) | Tool | Model | Log Name/Comment | Wellbore |
|---------------|-------------|----------------------------------|--|------------------|--------------------|
| 23.00 | 1719.37 | BH NavTrak (2019) | BH NavTrak (2019) (Standard) | | BIGFOOT 11-2-4 PWB |
| 1719.37 | 11581.65 | BH AutoTrak Curve/Express (2019) | BH AutoTrak Curve/Express (2019) (Short spacing) | | BIGFOOT 11-2-4 PWB |

Bottom Hole Location

| MD (ft) | Inc (°) | Az (°) | TVD (ft) | Local N (ft) | Local E (ft) | Grid East (US ft) | Grid North (US ft) | Latitude | Longitude |
|----------|---------|--------|----------|--------------|--------------|-------------------|--------------------|-----------------|------------------|
| 11581.65 | 90.000 | 88.034 | 6558.00 | 1643.43 | 4438.60 | 3307376.57 | 1365305.87 | 40°19'51.3120"N | 104°23'50.8200"W |

Targets

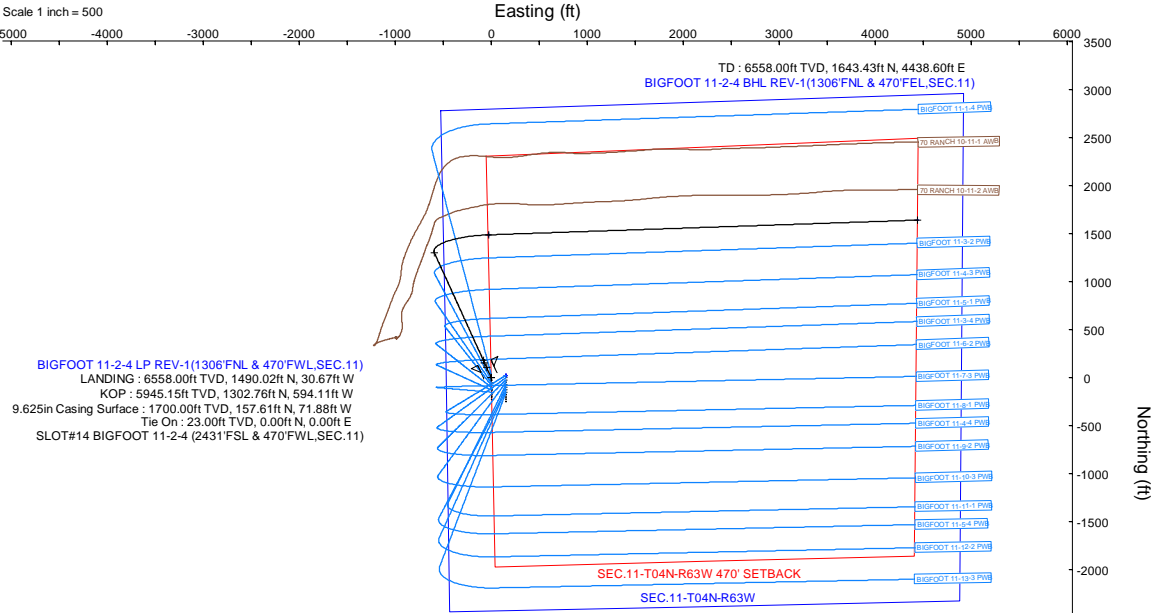
| Name | MD (ft) | TVD (ft) | Local N (ft) | Local E (ft) | Grid East (US ft) | Grid North (US ft) | Latitude | Longitude |
|---|----------|----------|--------------|--------------|-------------------|--------------------|-----------------|------------------|
| SEC.11-T04N-R63W | N/A | -2.50 | 25.50 | 150.57 | 3303108.87 | 1363635.60 | 40°19'35.3280"N | 104°24'46.1880"W |
| SEC.11-T04N-R63W 470' SETBACK | N/A | -2.50 | 25.50 | 150.57 | 3303108.87 | 1363635.60 | 40°19'35.3280"N | 104°24'46.1880"W |
| BIGFOOT 11-2-4 BHL REV-1(1306'FNL & 470'FEL,SEC.11) | 11581.65 | 6558.00 | 1643.43 | 4438.60 | 3307376.57 | 1365305.87 | 40°19'51.3120"N | 104°23'50.8200"W |
| BIGFOOT 11-2-4 LP REV-1(1306'FNL & 470'FWL,SEC.11) | 7109.75 | 6558.00 | 1490.02 | -30.67 | 3302959.72 | 1365097.72 | 40°19'49.8000"N | 104°24'48.5280"W |



Well Profile Data

| Design Comment | MD (ft) | Inc (°) | Az (°) | TVD (ft) | Local N (ft) | Local E (ft) | DLS (°/100ft) | VS (ft) |
|--------------------|----------|---------|---------|----------|--------------|--------------|---------------|---------|
| Tie On | 23.00 | 0.000 | 335.485 | 23.00 | 0.00 | 0.00 | 0.00 | 0.00 |
| End of Tangent | 700.00 | 0.000 | 335.485 | 700.00 | 0.00 | 0.00 | 0.00 | 0.00 |
| End of Build (J) | 1525.70 | 16.514 | 335.485 | 1514.32 | 107.52 | -49.03 | 2.00 | -8.65 |
| End of Tangent (J) | 1719.37 | 16.514 | 335.485 | 1700.00 | 157.61 | -71.88 | 0.00 | -12.68 |
| End of Tangent | 1819.37 | 16.514 | 335.485 | 1795.88 | 183.47 | -83.67 | 0.00 | -14.76 |
| KOP | 6147.17 | 16.514 | 335.485 | 5945.15 | 1302.76 | -594.11 | 0.00 | -104.81 |
| LANDING | 7109.75 | 90.000 | 88.034 | 6558.00 | 1490.02 | -30.67 | 10.00 | 488.61 |
| TD | 11581.65 | 90.000 | 88.034 | 6558.00 | 1643.43 | 4438.60 | 0.00 | 4733.08 |

Scale 1 inch = 500





Planned Wellpath Report

BIGFOOT 11-2-4 PWP Rev-B.0

Page 1 of 8



REFERENCE WELLPATH IDENTIFICATION

| | | | |
|----------|--|-----------|--------------------|
| Operator | CONFLUENCE RESOURCES | Well | BIGFOOT 11-2-4 |
| Field | WELD COUNTY (NAD83, TRUE NORTH) | API/Legal | |
| Facility | SEC.11-T04N-R63W | Wellbore | BIGFOOT 11-2-4 PWB |
| Slot | SLOT#14 BIGFOOT 11-2-4 (2431'FSL & 470'FWL,SEC.11) | | |

REPORT SETUP INFORMATION

| | | | |
|---------------------|---|------------------|-------------------------|
| Projection System | NAD83 / Lambert Colorado SP, Northern Zone (501), US feet | Software System | WellArchitect® 6.0 |
| North Reference | True | User | Painsetr |
| Scale | 0.999958 | Report Generated | 4/26/2022 at 3:23:50 PM |
| Convergence at slot | 0.70° East | Database | WellArchitectDB |

WELLPATH LOCATION

| | Local coordinates | | Grid coordinates | | Geographic coordinates | |
|-----------------------|-------------------|----------|------------------|-----------------|------------------------|---------------|
| | North[ft] | East[ft] | Easting[US ft] | Northing[US ft] | Latitude | Longitude |
| Slot Location | -25.50 | -150.57 | 3302958.64 | 1363608.26 | 40.3264100° | -104.4133700° |
| Facility Reference Pt | | | 3303108.87 | 1363635.60 | 40.3264800° | -104.4128300° |
| Field Reference Pt | | | 3230456.90 | 1245096.09 | 40.0032400° | -104.6773400° |

WELLPATH DATUM

| | | | |
|--------------------------|-------------------|---|-------------------|
| Calculation method | Minimum curvature | Rig (23') (KB) to Facility Vertical Datum | 4639.00ft |
| Horizontal Reference Pt | Slot | Rig (23') (KB) to Mean Sea Level | 4639.00ft |
| Vertical Reference Pt | Rig (23') (KB) | Rig (23') (KB) to Ground Level at Slot (SLOT#14 BIGFOOT 11-2-4 (2431'FSL & 470'FWL,SEC.11)) | 23.00ft |
| MD Reference Pt | Rig (23') (KB) | Section Origin | N 0.00, E 0.00 ft |
| Field Vertical Reference | Mean Sea Level | Section Azimuth | 69.68° |

Planned Wellpath Report

BIGFOOT 11-2-4 PWP Rev-B.0

Page 2 of 8

REFERENCE WELLPATH IDENTIFICATION

| | | | |
|----------|--|-----------|--------------------|
| Operator | CONFLUENCE RESOURCES | Well | BIGFOOT 11-2-4 |
| Field | WELD COUNTY (NAD83, TRUE NORTH) | API/Legal | |
| Facility | SEC.11-T04N-R63W | Wellbore | BIGFOOT 11-2-4 PWB |
| Slot | SLOT#14 BIGFOOT 11-2-4 (2431'FSL & 470'FWL,SEC.11) | | |

WELLPATH DATA (124 stations) † = interpolated, ‡ = extrapolated station

| MD [ft] | Inclination [°] | Azimuth [°] | TVD [ft] | Vert Sect [ft] | North [ft] | East [ft] | Grid East [US ft] | Grid North [US ft] | Latitude | Longitude | DLS [°/100ft] | Comments |
|------------|--------------------|----------------|-------------|----------------------|---------------|--------------|----------------------|-----------------------|------------|--------------|------------------|--------------------|
| 0.00† | 0.000 | 335.485 | 0.00 | 0.00 | 0.00 | 0.00 | 3302958.64 | 1363608.26 | 40.3264100 | -104.4133700 | 0.00 | |
| 23.00 | 0.000 | 335.485 | 23.00 | 0.00 | 0.00 | 0.00 | 3302958.64 | 1363608.26 | 40.3264100 | -104.4133700 | 0.00 | Tie On |
| 123.00† | 0.000 | 335.485 | 123.00 | 0.00 | 0.00 | 0.00 | 3302958.64 | 1363608.26 | 40.3264100 | -104.4133700 | 0.00 | |
| 223.00† | 0.000 | 335.485 | 223.00 | 0.00 | 0.00 | 0.00 | 3302958.64 | 1363608.26 | 40.3264100 | -104.4133700 | 0.00 | |
| 323.00† | 0.000 | 335.485 | 323.00 | 0.00 | 0.00 | 0.00 | 3302958.64 | 1363608.26 | 40.3264100 | -104.4133700 | 0.00 | |
| 423.00† | 0.000 | 335.485 | 423.00 | 0.00 | 0.00 | 0.00 | 3302958.64 | 1363608.26 | 40.3264100 | -104.4133700 | 0.00 | |
| 523.00† | 0.000 | 335.485 | 523.00 | 0.00 | 0.00 | 0.00 | 3302958.64 | 1363608.26 | 40.3264100 | -104.4133700 | 0.00 | |
| 623.00† | 0.000 | 335.485 | 623.00 | 0.00 | 0.00 | 0.00 | 3302958.64 | 1363608.26 | 40.3264100 | -104.4133700 | 0.00 | |
| 700.00 | 0.000 | 335.485 | 700.00 | 0.00 | 0.00 | 0.00 | 3302958.64 | 1363608.26 | 40.3264100 | -104.4133700 | 0.00 | End of Tangent |
| 723.00† | 0.460 | 335.485 | 723.00 | -0.01 | 0.08 | -0.04 | 3302958.60 | 1363608.34 | 40.3264102 | -104.4133701 | 2.00 | |
| 823.00† | 2.460 | 335.485 | 822.96 | -0.19 | 2.40 | -1.10 | 3302957.51 | 1363610.64 | 40.3264166 | -104.4133739 | 2.00 | |
| 923.00† | 4.460 | 335.485 | 922.77 | -0.63 | 7.89 | -3.60 | 3302954.94 | 1363616.10 | 40.3264317 | -104.4133829 | 2.00 | |
| 1023.00† | 6.460 | 335.485 | 1022.32 | -1.33 | 16.55 | -7.55 | 3302950.89 | 1363624.71 | 40.3264554 | -104.4133971 | 2.00 | |
| 1123.00† | 8.460 | 335.485 | 1121.46 | -2.28 | 28.36 | -12.93 | 3302945.36 | 1363636.46 | 40.3264879 | -104.4134164 | 2.00 | |
| 1223.00† | 10.460 | 335.485 | 1220.10 | -3.48 | 43.32 | -19.75 | 3302938.36 | 1363651.32 | 40.3265289 | -104.4134408 | 2.00 | |
| 1323.00† | 12.460 | 335.485 | 1318.10 | -4.94 | 61.39 | -28.00 | 3302929.89 | 1363669.30 | 40.3265785 | -104.4134704 | 2.00 | |
| 1423.00† | 14.460 | 335.485 | 1415.35 | -6.64 | 82.57 | -37.66 | 3302919.98 | 1363690.35 | 40.3266366 | -104.4135050 | 2.00 | |
| 1523.00† | 16.460 | 335.485 | 1511.73 | -8.59 | 106.82 | -48.72 | 3302908.62 | 1363714.47 | 40.3267032 | -104.4135447 | 2.00 | |
| 1525.70 | 16.514 | 335.485 | 1514.32 | -8.65 | 107.52 | -49.03 | 3302908.29 | 1363715.16 | 40.3267051 | -104.4135459 | 2.00 | End of Build (J) |
| 1623.00† | 16.514 | 335.485 | 1607.60 | -10.67 | 132.68 | -60.51 | 3302896.51 | 1363740.18 | 40.3267742 | -104.4135870 | 0.00 | |
| 1719.37 | 16.514 | 335.485 | 1700.00 | -12.68 | 157.61 | -71.88 | 3302884.84 | 1363764.96 | 40.3268426 | -104.4136278 | 0.00 | End of Tangent (J) |
| 1723.00† | 16.514 | 335.485 | 1703.48 | -12.75 | 158.55 | -72.30 | 3302884.40 | 1363765.90 | 40.3268452 | -104.4136293 | 0.00 | |
| 1819.37 | 16.514 | 335.485 | 1795.88 | -14.76 | 183.47 | -83.67 | 3302872.73 | 1363790.68 | 40.3269136 | -104.4136701 | 0.00 | End of Tangent |
| 1823.00† | 16.514 | 335.485 | 1799.35 | -14.84 | 184.41 | -84.10 | 3302872.29 | 1363791.61 | 40.3269162 | -104.4136716 | 0.00 | |
| 1923.00† | 16.514 | 335.485 | 1895.23 | -16.92 | 210.27 | -95.89 | 3302860.18 | 1363817.33 | 40.3269872 | -104.4137139 | 0.00 | |
| 2023.00† | 16.514 | 335.485 | 1991.10 | -19.00 | 236.13 | -107.69 | 3302848.07 | 1363843.04 | 40.3270582 | -104.4137562 | 0.00 | |
| 2123.00† | 16.514 | 335.485 | 2086.98 | -21.08 | 262.00 | -119.48 | 3302835.96 | 1363868.76 | 40.3271292 | -104.4137985 | 0.00 | |
| 2223.00† | 16.514 | 335.485 | 2182.85 | -23.16 | 287.86 | -131.28 | 3302823.85 | 1363894.47 | 40.3272002 | -104.4138408 | 0.00 | |
| 2323.00† | 16.514 | 335.485 | 2278.73 | -25.24 | 313.72 | -143.07 | 3302811.74 | 1363920.19 | 40.3272711 | -104.4138831 | 0.00 | |
| 2423.00† | 16.514 | 335.485 | 2374.60 | -27.32 | 339.58 | -154.86 | 3302799.63 | 1363945.90 | 40.3273421 | -104.4139254 | 0.00 | |

Planned Wellpath Report

BIGFOOT 11-2-4 PWP Rev-B.0

Page 3 of 8

REFERENCE WELLPATH IDENTIFICATION

| | | | |
|----------|--|-----------|--------------------|
| Operator | CONFLUENCE RESOURCES | Well | BIGFOOT 11-2-4 |
| Field | WELD COUNTY (NAD83, TRUE NORTH) | API/Legal | |
| Facility | SEC.11-T04N-R63W | Wellbore | BIGFOOT 11-2-4 PWB |
| Slot | SLOT#14 BIGFOOT 11-2-4 (2431'FSL & 470'FWL,SEC.11) | | |

WELLPATH DATA (124 stations) † = interpolated, ‡ = extrapolated station

| MD [ft] | Inclination [°] | Azimuth [°] | TVD [ft] | Vert Sect [ft] | North [ft] | East [ft] | Grid East [US ft] | Grid North [US ft] | Latitude | Longitude | DLS [°/100ft] | Comments |
|------------|--------------------|----------------|-------------|-------------------|---------------|--------------|----------------------|-----------------------|------------|--------------|------------------|----------|
| 2523.00† | 16.514 | 335.485 | 2470.48 | -29.40 | 365.45 | -166.66 | 3302787.52 | 1363971.62 | 40.3274131 | -104.4139677 | 0.00 | |
| 2623.00† | 16.514 | 335.485 | 2566.35 | -31.48 | 391.31 | -178.45 | 3302775.41 | 1363997.33 | 40.3274841 | -104.4140100 | 0.00 | |
| 2723.00† | 16.514 | 335.485 | 2662.23 | -33.56 | 417.17 | -190.25 | 3302763.30 | 1364023.05 | 40.3275551 | -104.4140523 | 0.00 | |
| 2823.00† | 16.514 | 335.485 | 2758.10 | -35.64 | 443.03 | -202.04 | 3302751.19 | 1364048.76 | 40.3276261 | -104.4140946 | 0.00 | |
| 2923.00† | 16.514 | 335.485 | 2853.98 | -37.72 | 468.90 | -213.84 | 3302739.08 | 1364074.48 | 40.3276971 | -104.4141369 | 0.00 | |
| 3023.00† | 16.514 | 335.485 | 2949.85 | -39.80 | 494.76 | -225.63 | 3302726.97 | 1364100.19 | 40.3277681 | -104.4141792 | 0.00 | |
| 3123.00† | 16.514 | 335.485 | 3045.73 | -41.88 | 520.62 | -237.43 | 3302714.86 | 1364125.91 | 40.3278391 | -104.4142215 | 0.00 | |
| 3223.00† | 16.514 | 335.485 | 3141.60 | -43.96 | 546.48 | -249.22 | 3302702.75 | 1364151.62 | 40.3279101 | -104.4142638 | 0.00 | |
| 3323.00† | 16.514 | 335.485 | 3237.48 | -46.04 | 572.35 | -261.01 | 3302690.64 | 1364177.34 | 40.3279811 | -104.4143061 | 0.00 | |
| 3423.00† | 16.514 | 335.485 | 3333.35 | -48.12 | 598.21 | -272.81 | 3302678.53 | 1364203.05 | 40.3280520 | -104.4143484 | 0.00 | |
| 3523.00† | 16.514 | 335.485 | 3429.23 | -50.21 | 624.07 | -284.60 | 3302666.42 | 1364228.77 | 40.3281230 | -104.4143908 | 0.00 | |
| 3623.00† | 16.514 | 335.485 | 3525.10 | -52.29 | 649.94 | -296.40 | 3302654.31 | 1364254.48 | 40.3281940 | -104.4144331 | 0.00 | |
| 3723.00† | 16.514 | 335.485 | 3620.98 | -54.37 | 675.80 | -308.19 | 3302642.20 | 1364280.20 | 40.3282650 | -104.4144754 | 0.00 | |
| 3823.00† | 16.514 | 335.485 | 3716.85 | -56.45 | 701.66 | -319.99 | 3302630.09 | 1364305.91 | 40.3283360 | -104.4145177 | 0.00 | |
| 3923.00† | 16.514 | 335.485 | 3812.73 | -58.53 | 727.52 | -331.78 | 3302617.98 | 1364331.63 | 40.3284070 | -104.4145600 | 0.00 | |
| 4023.00† | 16.514 | 335.485 | 3908.60 | -60.61 | 753.39 | -343.58 | 3302605.87 | 1364357.34 | 40.3284780 | -104.4146023 | 0.00 | |
| 4123.00† | 16.514 | 335.485 | 4004.48 | -62.69 | 779.25 | -355.37 | 3302593.76 | 1364383.06 | 40.3285490 | -104.4146446 | 0.00 | |
| 4223.00† | 16.514 | 335.485 | 4100.35 | -64.77 | 805.11 | -367.17 | 3302581.65 | 1364408.77 | 40.3286200 | -104.4146869 | 0.00 | |
| 4323.00† | 16.514 | 335.485 | 4196.23 | -66.85 | 830.97 | -378.96 | 3302569.54 | 1364434.49 | 40.3286910 | -104.4147292 | 0.00 | |
| 4423.00† | 16.514 | 335.485 | 4292.10 | -68.93 | 856.84 | -390.75 | 3302557.43 | 1364460.20 | 40.3287620 | -104.4147715 | 0.00 | |
| 4523.00† | 16.514 | 335.485 | 4387.98 | -71.01 | 882.70 | -402.55 | 3302545.32 | 1364485.92 | 40.3288329 | -104.4148138 | 0.00 | |
| 4623.00† | 16.514 | 335.485 | 4483.85 | -73.09 | 908.56 | -414.34 | 3302533.21 | 1364511.63 | 40.3289039 | -104.4148561 | 0.00 | |
| 4723.00† | 16.514 | 335.485 | 4579.73 | -75.17 | 934.43 | -426.14 | 3302521.10 | 1364537.35 | 40.3289749 | -104.4148984 | 0.00 | |
| 4823.00† | 16.514 | 335.485 | 4675.60 | -77.25 | 960.29 | -437.93 | 3302508.99 | 1364563.06 | 40.3290459 | -104.4149407 | 0.00 | |
| 4923.00† | 16.514 | 335.485 | 4771.48 | -79.33 | 986.15 | -449.73 | 3302496.88 | 1364588.78 | 40.3291169 | -104.4149830 | 0.00 | |
| 5023.00† | 16.514 | 335.485 | 4867.35 | -81.41 | 1012.01 | -461.52 | 3302484.77 | 1364614.49 | 40.3291879 | -104.4150253 | 0.00 | |
| 5123.00† | 16.514 | 335.485 | 4963.23 | -83.50 | 1037.88 | -473.32 | 3302472.66 | 1364640.21 | 40.3292589 | -104.4150676 | 0.00 | |
| 5223.00† | 16.514 | 335.485 | 5059.10 | -85.58 | 1063.74 | -485.11 | 3302460.55 | 1364665.93 | 40.3293299 | -104.4151099 | 0.00 | |
| 5323.00† | 16.514 | 335.485 | 5154.98 | -87.66 | 1089.60 | -496.91 | 3302448.44 | 1364691.64 | 40.3294009 | -104.4151522 | 0.00 | |
| 5423.00† | 16.514 | 335.485 | 5250.85 | -89.74 | 1115.47 | -508.70 | 3302436.33 | 1364717.36 | 40.3294719 | -104.4151945 | 0.00 | |

Planned Wellpath Report

BIGFOOT 11-2-4 PWP Rev-B.0

Page 4 of 8

REFERENCE WELLPATH IDENTIFICATION

| | | | |
|----------|--|-----------|--------------------|
| Operator | CONFLUENCE RESOURCES | Well | BIGFOOT 11-2-4 |
| Field | WELD COUNTY (NAD83, TRUE NORTH) | API/Legal | |
| Facility | SEC.11-T04N-R63W | Wellbore | BIGFOOT 11-2-4 PWB |
| Slot | SLOT#14 BIGFOOT 11-2-4 (2431'FSL & 470'FWL,SEC.11) | | |

WELLPATH DATA (124 stations) † = interpolated, ‡ = extrapolated station

| MD [ft] | Inclination [°] | Azimuth [°] | TVD [ft] | Vert Sect [ft] | North [ft] | East [ft] | Grid East [US ft] | Grid North [US ft] | Latitude | Longitude | DLS [°/100ft] | Comments |
|------------|--------------------|----------------|-------------|-------------------|---------------|--------------|----------------------|-----------------------|------------|--------------|------------------|----------|
| 5523.00† | 16.514 | 335.485 | 5346.73 | -91.82 | 1141.33 | -520.50 | 3302424.22 | 1364743.07 | 40.3295429 | -104.4152368 | 0.00 | |
| 5623.00† | 16.514 | 335.485 | 5442.60 | -93.90 | 1167.19 | -532.29 | 3302412.11 | 1364768.79 | 40.3296138 | -104.4152791 | 0.00 | |
| 5723.00† | 16.514 | 335.485 | 5538.48 | -95.98 | 1193.05 | -544.08 | 3302400.00 | 1364794.50 | 40.3296848 | -104.4153214 | 0.00 | |
| 5823.00† | 16.514 | 335.485 | 5634.35 | -98.06 | 1218.92 | -555.88 | 3302387.89 | 1364820.22 | 40.3297558 | -104.4153637 | 0.00 | |
| 5923.00† | 16.514 | 335.485 | 5730.22 | -100.14 | 1244.78 | -567.67 | 3302375.78 | 1364845.93 | 40.3298268 | -104.4154061 | 0.00 | |
| 6023.00† | 16.514 | 335.485 | 5826.10 | -102.22 | 1270.64 | -579.47 | 3302363.67 | 1364871.65 | 40.3298978 | -104.4154484 | 0.00 | |
| 6123.00† | 16.514 | 335.485 | 5921.97 | -104.30 | 1296.51 | -591.26 | 3302351.56 | 1364897.36 | 40.3299688 | -104.4154907 | 0.00 | |
| 6147.17 | 16.514 | 335.485 | 5945.15 | -104.81 | 1302.76 | -594.11 | 3302348.63 | 1364903.58 | 40.3299860 | -104.4155009 | 0.00 | KOP |
| 6223.00† | 15.369 | 3.039 | 6018.16 | -101.61 | 1322.63 | -598.06 | 3302344.44 | 1364923.40 | 40.3300405 | -104.4155150 | 10.00 | |
| 6323.00† | 18.965 | 35.208 | 6113.90 | -82.91 | 1349.21 | -587.96 | 3302354.21 | 1364950.10 | 40.3301135 | -104.4154788 | 10.00 | |
| 6423.00† | 26.044 | 53.955 | 6206.35 | -48.29 | 1375.47 | -560.78 | 3302381.08 | 1364976.69 | 40.3301855 | -104.4153813 | 10.00 | |
| 6523.00† | 34.522 | 64.576 | 6292.68 | 1.19 | 1400.62 | -517.32 | 3302424.21 | 1365002.37 | 40.3302546 | -104.4152255 | 10.00 | |
| 6623.00† | 43.588 | 71.316 | 6370.29 | 64.03 | 1423.88 | -458.93 | 3302482.32 | 1365026.35 | 40.3303185 | -104.4150160 | 10.00 | |
| 6723.00† | 52.935 | 76.098 | 6436.81 | 138.32 | 1444.57 | -387.36 | 3302553.62 | 1365047.91 | 40.3303752 | -104.4147593 | 10.00 | |
| 6823.00† | 62.432 | 79.815 | 6490.22 | 221.82 | 1462.04 | -304.80 | 3302635.96 | 1365066.38 | 40.3304232 | -104.4144632 | 10.00 | |
| 6923.00† | 72.011 | 82.933 | 6528.90 | 311.97 | 1475.76 | -213.75 | 3302726.83 | 1365081.22 | 40.3304609 | -104.4141367 | 10.00 | |
| 7023.00† | 81.635 | 85.727 | 6551.68 | 406.03 | 1485.32 | -116.98 | 3302823.47 | 1365091.97 | 40.3304871 | -104.4137896 | 10.00 | |
| 7109.75 | 90.000 | 88.034 | 6558.00† | 488.61 | 1490.02 | -30.67 | 3302909.72 | 1365097.72 | 40.3305000 | -104.4134800 | 10.00 | LANDING |
| 7123.00† | 90.000 | 88.034 | 6558.00 | 501.18 | 1490.47 | -17.43 | 3302922.95 | 1365098.34 | 40.3305012 | -104.4134325 | 0.00 | |
| 7223.00† | 90.000 | 88.034 | 6558.00 | 596.09 | 1493.90 | 82.51 | 3303022.84 | 1365102.99 | 40.3305107 | -104.4130741 | 0.00 | |
| 7323.00† | 90.000 | 88.034 | 6558.00 | 691.01 | 1497.33 | 182.45 | 3303122.72 | 1365107.65 | 40.3305201 | -104.4127156 | 0.00 | |
| 7423.00† | 90.000 | 88.034 | 6558.00 | 785.92 | 1500.76 | 282.39 | 3303222.61 | 1365112.30 | 40.3305295 | -104.4123571 | 0.00 | |
| 7523.00† | 90.000 | 88.034 | 6558.00 | 880.84 | 1504.19 | 382.34 | 3303322.50 | 1365116.96 | 40.3305389 | -104.4119987 | 0.00 | |
| 7623.00† | 90.000 | 88.034 | 6558.00 | 975.75 | 1507.62 | 482.28 | 3303422.38 | 1365121.61 | 40.3305483 | -104.4116402 | 0.00 | |
| 7723.00† | 90.000 | 88.034 | 6558.00 | 1070.67 | 1511.06 | 582.22 | 3303522.27 | 1365126.27 | 40.3305577 | -104.4112818 | 0.00 | |
| 7823.00† | 90.000 | 88.034 | 6558.00 | 1165.58 | 1514.49 | 682.16 | 3303622.16 | 1365130.92 | 40.3305671 | -104.4109233 | 0.00 | |
| 7923.00† | 90.000 | 88.034 | 6558.00 | 1260.49 | 1517.92 | 782.10 | 3303722.05 | 1365135.57 | 40.3305765 | -104.4105648 | 0.00 | |
| 8023.00† | 90.000 | 88.034 | 6558.00 | 1355.41 | 1521.35 | 882.04 | 3303821.93 | 1365140.23 | 40.3305860 | -104.4102064 | 0.00 | |
| 8123.00† | 90.000 | 88.034 | 6558.00 | 1450.32 | 1524.78 | 981.98 | 3303921.82 | 1365144.88 | 40.3305954 | -104.4098479 | 0.00 | |
| 8223.00† | 90.000 | 88.034 | 6558.00 | 1545.24 | 1528.21 | 1081.92 | 3304021.71 | 1365149.54 | 40.3306048 | -104.4094895 | 0.00 | |

Planned Wellpath Report

BIGFOOT 11-2-4 PWP Rev-B.0

Page 5 of 8

REFERENCE WELLPATH IDENTIFICATION

| | | | |
|----------|--|-----------|--------------------|
| Operator | CONFLUENCE RESOURCES | Well | BIGFOOT 11-2-4 |
| Field | WELD COUNTY (NAD83, TRUE NORTH) | API/Legal | |
| Facility | SEC.11-T04N-R63W | Wellbore | BIGFOOT 11-2-4 PWB |
| Slot | SLOT#14 BIGFOOT 11-2-4 (2431'FSL & 470'FWL,SEC.11) | | |

WELLPATH DATA (124 stations) † = interpolated, ‡ = extrapolated station

| MD [ft] | Inclination [°] | Azimuth [°] | TVD [ft] | Vert Sect [ft] | North [ft] | East [ft] | Grid East [US ft] | Grid North [US ft] | Latitude | Longitude | DLS [°/100ft] | Comments |
|------------|--------------------|----------------|-------------|-------------------|---------------|--------------|----------------------|-----------------------|------------|--------------|------------------|----------|
| 8323.00† | 90.000 | 88.034 | 6558.00 | 1640.15 | 1531.64 | 1181.86 | 3304121.59 | 1365154.19 | 40.3306142 | -104.4091310 | 0.00 | |
| 8423.00† | 90.000 | 88.034 | 6558.00 | 1735.06 | 1535.07 | 1281.81 | 3304221.48 | 1365158.85 | 40.3306236 | -104.4087725 | 0.00 | |
| 8523.00† | 90.000 | 88.034 | 6558.00 | 1829.98 | 1538.50 | 1381.75 | 3304321.37 | 1365163.50 | 40.3306330 | -104.4084141 | 0.00 | |
| 8623.00† | 90.000 | 88.034 | 6558.00 | 1924.89 | 1541.93 | 1481.69 | 3304421.26 | 1365168.16 | 40.3306424 | -104.4080556 | 0.00 | |
| 8723.00† | 90.000 | 88.034 | 6558.00 | 2019.81 | 1545.36 | 1581.63 | 3304521.14 | 1365172.81 | 40.3306518 | -104.4076972 | 0.00 | |
| 8823.00† | 90.000 | 88.034 | 6558.00 | 2114.72 | 1548.79 | 1681.57 | 3304621.03 | 1365177.47 | 40.3306612 | -104.4073387 | 0.00 | |
| 8923.00† | 90.000 | 88.034 | 6558.00 | 2209.64 | 1552.22 | 1781.51 | 3304720.92 | 1365182.12 | 40.3306706 | -104.4069802 | 0.00 | |
| 9023.00† | 90.000 | 88.034 | 6558.00 | 2304.55 | 1555.65 | 1881.45 | 3304820.80 | 1365186.78 | 40.3306800 | -104.4066218 | 0.00 | |
| 9123.00† | 90.000 | 88.034 | 6558.00 | 2399.46 | 1559.08 | 1981.39 | 3304920.69 | 1365191.43 | 40.3306894 | -104.4062633 | 0.00 | |
| 9223.00† | 90.000 | 88.034 | 6558.00 | 2494.38 | 1562.51 | 2081.34 | 3305020.58 | 1365196.09 | 40.3306988 | -104.4059049 | 0.00 | |
| 9323.00† | 90.000 | 88.034 | 6558.00 | 2589.29 | 1565.94 | 2181.28 | 3305120.47 | 1365200.74 | 40.3307081 | -104.4055464 | 0.00 | |
| 9423.00† | 90.000 | 88.034 | 6558.00 | 2684.21 | 1569.37 | 2281.22 | 3305220.35 | 1365205.39 | 40.3307175 | -104.4051879 | 0.00 | |
| 9523.00† | 90.000 | 88.034 | 6558.00 | 2779.12 | 1572.80 | 2381.16 | 3305320.24 | 1365210.05 | 40.3307269 | -104.4048295 | 0.00 | |
| 9623.00† | 90.000 | 88.034 | 6558.00 | 2874.04 | 1576.23 | 2481.10 | 3305420.13 | 1365214.70 | 40.3307363 | -104.4044710 | 0.00 | |
| 9723.00† | 90.000 | 88.034 | 6558.00 | 2968.95 | 1579.67 | 2581.04 | 3305520.02 | 1365219.36 | 40.3307457 | -104.4041126 | 0.00 | |
| 9823.00† | 90.000 | 88.034 | 6558.00 | 3063.86 | 1583.10 | 2680.98 | 3305619.90 | 1365224.01 | 40.3307551 | -104.4037541 | 0.00 | |
| 9923.00† | 90.000 | 88.034 | 6558.00 | 3158.78 | 1586.53 | 2780.92 | 3305719.79 | 1365228.67 | 40.3307645 | -104.4033956 | 0.00 | |
| 10023.00† | 90.000 | 88.034 | 6558.00 | 3253.69 | 1589.96 | 2880.86 | 3305819.68 | 1365233.32 | 40.3307739 | -104.4030372 | 0.00 | |
| 10123.00† | 90.000 | 88.034 | 6558.00 | 3348.61 | 1593.39 | 2980.81 | 3305919.56 | 1365237.98 | 40.3307832 | -104.4026787 | 0.00 | |
| 10223.00† | 90.000 | 88.034 | 6558.00 | 3443.52 | 1596.82 | 3080.75 | 3306019.45 | 1365242.63 | 40.3307926 | -104.4023203 | 0.00 | |
| 10323.00† | 90.000 | 88.034 | 6558.00 | 3538.44 | 1600.25 | 3180.69 | 3306119.34 | 1365247.29 | 40.3308020 | -104.4019618 | 0.00 | |
| 10423.00† | 90.000 | 88.034 | 6558.00 | 3633.35 | 1603.68 | 3280.63 | 3306219.23 | 1365251.94 | 40.3308114 | -104.4016033 | 0.00 | |
| 10523.00† | 90.000 | 88.034 | 6558.00 | 3728.26 | 1607.11 | 3380.57 | 3306319.11 | 1365256.60 | 40.3308208 | -104.4012449 | 0.00 | |
| 10623.00† | 90.000 | 88.034 | 6558.00 | 3823.18 | 1610.54 | 3480.51 | 3306419.00 | 1365261.25 | 40.3308302 | -104.4008864 | 0.00 | |
| 10723.00† | 90.000 | 88.034 | 6558.00 | 3918.09 | 1613.97 | 3580.45 | 3306518.89 | 1365265.91 | 40.3308395 | -104.4005279 | 0.00 | |
| 10823.00† | 90.000 | 88.034 | 6558.00 | 4013.01 | 1617.40 | 3680.39 | 3306618.77 | 1365270.56 | 40.3308489 | -104.4001695 | 0.00 | |
| 10923.00† | 90.000 | 88.034 | 6558.00 | 4107.92 | 1620.83 | 3780.33 | 3306718.66 | 1365275.21 | 40.3308583 | -104.3998110 | 0.00 | |
| 11023.00† | 90.000 | 88.034 | 6558.00 | 4202.84 | 1624.26 | 3880.28 | 3306818.55 | 1365279.87 | 40.3308677 | -104.3994526 | 0.00 | |
| 11123.00† | 90.000 | 88.034 | 6558.00 | 4297.75 | 1627.69 | 3980.22 | 3306918.44 | 1365284.52 | 40.3308770 | -104.3990941 | 0.00 | |
| 11223.00† | 90.000 | 88.034 | 6558.00 | 4392.66 | 1631.12 | 4080.16 | 3307018.32 | 1365289.18 | 40.3308864 | -104.3987356 | 0.00 | |



Planned Wellpath Report

BIGFOOT 11-2-4 PWP Rev-B.0

Page 6 of 8



REFERENCE WELLPATH IDENTIFICATION

| | | | |
|----------|--|-----------|--------------------|
| Operator | CONFLUENCE RESOURCES | Well | BIGFOOT 11-2-4 |
| Field | WELD COUNTY (NAD83, TRUE NORTH) | API/Legal | |
| Facility | SEC.11-T04N-R63W | Wellbore | BIGFOOT 11-2-4 PWB |
| Slot | SLOT#14 BIGFOOT 11-2-4 (2431'FSL & 470'FWL,SEC.11) | | |

WELLPATH DATA (124 stations) † = interpolated, ‡ = extrapolated station

| MD [ft] | Inclination [°] | Azimuth [°] | TVD [ft] | Vert Sect [ft] | North [ft] | East [ft] | Grid East [US ft] | Grid North [US ft] | Latitude | Longitude | DLS [°/100ft] | Comments |
|------------|--------------------|----------------|-------------|-------------------|---------------|--------------|----------------------|-----------------------|------------|--------------|------------------|----------|
| 11323.00† | 90.000 | 88.034 | 6558.00 | 4487.58 | 1634.55 | 4180.10 | 3307118.21 | 1365293.83 | 40.3308958 | -104.3983772 | 0.00 | |
| 11423.00† | 90.000 | 88.034 | 6558.00 | 4582.49 | 1637.98 | 4280.04 | 3307218.10 | 1365298.49 | 40.3309051 | -104.3980187 | 0.00 | |
| 11523.00† | 90.000 | 88.034 | 6558.00 | 4677.41 | 1641.41 | 4379.98 | 3307317.98 | 1365303.14 | 40.3309145 | -104.3976602 | 0.00 | |
| 11581.65 | 90.000 | 88.034 | 6558.00‡ | 4733.08 | 1643.43 | 4438.60 | 3307376.57 | 1365305.87 | 40.3309200 | -104.3974500 | 0.00 | TD |

HOLE & CASING SECTIONS

- Ref Wellbore: BIGFOOT 11-2-4 PWB Ref Wellpath: BIGFOOT 11-2-4 PWP Rev-B.0

| String/Diameter | Start MD [ft] | End MD [ft] | Interval [ft] | Start TVD [ft] | End TVD [ft] | Start N/S [ft] | Start E/W [ft] | End N/S [ft] | End E/W [ft] |
|------------------------|------------------|----------------|------------------|-------------------|-----------------|-------------------|-------------------|-----------------|-----------------|
| 9.625in Casing Surface | 23.00 | 1719.37 | 1696.37 | 23.00 | 1700.00 | 0.00 | 0.00 | 157.61 | -71.88 |



Planned Wellpath Report

BIGFOOT 11-2-4 PWP Rev-B.0

Page 7 of 8



REFERENCE WELLPATH IDENTIFICATION

| | | | |
|----------|--|-----------|--------------------|
| Operator | CONFLUENCE RESOURCES | Well | BIGFOOT 11-2-4 |
| Field | WELD COUNTY (NAD83, TRUE NORTH) | API/Legal | |
| Facility | SEC.11-T04N-R63W | Wellbore | BIGFOOT 11-2-4 PWB |
| Slot | SLOT#14 BIGFOOT 11-2-4 (2431'FSL & 470'FWL,SEC.11) | | |

TARGETS

| Name | MD [ft] | TVD [ft] | North [ft] | East [ft] | Grid East [US ft] | Grid North [US ft] | Latitude | Longitude | Shape |
|--|------------|-------------|---------------|--------------|----------------------|-----------------------|------------|--------------|---------|
| SEC.11-T04N-R63W | N/A | -2.50 | 25.50 | 150.57 | 3303108.87 | 1363635.60 | 40.3264800 | -104.4128300 | polygon |
| 2D Polygon: dimensions not calculated | | | | | | | | | |
| SEC.11-T04N-R63W 470' SETBACK | N/A | -2.50 | 25.50 | 150.57 | 3303108.87 | 1363635.60 | 40.3264800 | -104.4128300 | polygon |
| 2D Polygon: dimensions not calculated | | | | | | | | | |
| 2) BIGFOOT 11-2-4 BHL REV-1 (1306'FNL & 470'FEL,SEC.11) | 11581.65 | 6558.00 | 1643.43 | 4438.60 | 3307376.57 | 1365305.87 | 40.3309200 | -104.3974500 | point |
| 1) BIGFOOT 11-2-4 LP REV-1 (1306'FNL & 470'FWL,SEC.11) | 7109.75 | 6558.00 | 1490.02 | -30.67 | 3302909.72 | 1365097.72 | 40.3305000 | -104.4134800 | point |

SURVEY PROGRAM - Ref Wellbore: BIGFOOT 11-2-4 PWB Ref Wellpath: BIGFOOT 11-2-4 PWP Rev-B.0

| Start MD [ft] | End MD [ft] | Positional Uncertainty Model | Log Name/Comment | Wellbore |
|------------------|----------------|--|------------------|--------------------|
| 23.00 | 1719.37 | BH NaviTrak (2019) (Standard) | | BIGFOOT 11-2-4 PWB |
| 1719.37 | 11581.65 | BH AutoTrak Curve/eXpress (2019) (Short spacing) | | BIGFOOT 11-2-4 PWB |



Planned Wellpath Report

BIGFOOT 11-2-4 PWP Rev-B.0

Page 8 of 8



REFERENCE WELLPATH IDENTIFICATION

| | | | |
|----------|--|-----------|--------------------|
| Operator | CONFLUENCE RESOURCES | Well | BIGFOOT 11-2-4 |
| Field | WELD COUNTY (NAD83, TRUE NORTH) | API/Legal | |
| Facility | SEC.11-T04N-R63W | Wellbore | BIGFOOT 11-2-4 PWB |
| Slot | SLOT#14 BIGFOOT 11-2-4 (2431'FSL & 470'FWL,SEC.11) | | |

DESIGN COMMENTS

| MD [ft] | Inclination [°] | Azimuth [°] | TVD [ft] | Comment |
|------------|--------------------|----------------|-------------|--------------------|
| 23.00 | 0.000 | 335.485 | 23.00 | Tie On |
| 700.00 | 0.000 | 335.485 | 700.00 | End of Tangent |
| 1525.70 | 16.514 | 335.485 | 1514.32 | End of Build (J) |
| 1719.37 | 16.514 | 335.485 | 1700.00 | End of Tangent (J) |
| 1819.37 | 16.514 | 335.485 | 1795.88 | End of Tangent |
| 6147.17 | 16.514 | 335.485 | 5945.15 | KOP |
| 7109.75 | 90.000 | 88.034 | 6558.00 | LANDING |
| 11581.65 | 90.000 | 88.034 | 6558.00 | TD |



Closest Approach Clearance Summary Report

BIGFOOT 11-2-4 PWP Rev-B.0 - SPE WPTS Stop
Drilling HSE Risk (2017)
Page 1 of 3



| REFERENCE WELLPATH IDENTIFICATION | | | |
|-----------------------------------|--|-----------|--------------------|
| Operator | CONFLUENCE RESOURCES | Well | BIGFOOT 11-2-4 |
| Field | WELD COUNTY (NAD83, TRUE NORTH) | API/Legal | |
| Facility | SEC.11-T04N-R63W | Wellbore | BIGFOOT 11-2-4 PWB |
| Slot | SLOT#14 BIGFOOT 11-2-4 (2431'FSL & 470'FWL,SEC.11) | | |

| REPORT SETUP INFORMATION | | | |
|--------------------------|---|------------------|-------------------------|
| Projection System | NAD83 / Lambert Colorado SP, Northern Zone (501), US feet | Software System | WellArchitect® 6.0 |
| North Reference | True | User | Painsetr |
| Scale | 0.999958 | Report Generated | 4/26/2022 at 3:23:56 PM |
| Convergence at slot | 0.70° East | Database | WellArchitectDB |

| WELLPATH LOCATION | | | | | | |
|-----------------------|-------------------|----------|------------------|-----------------|------------------------|---------------|
| | Local coordinates | | Grid coordinates | | Geographic coordinates | |
| | North[ft] | East[ft] | Easting[US ft] | Northing[US ft] | Latitude | Longitude |
| Slot Location | -25.50 | -150.57 | 3302958.64 | 1363608.26 | 40.3264100° | -104.4133700° |
| Facility Reference Pt | | | 3303108.87 | 1363635.60 | 40.3264800° | -104.4128300° |
| Field Reference Pt | | | 3230456.90 | 1245096.09 | 40.0032400° | -104.6773400° |

| WELLPATH DATUM | | | |
|--------------------------|-------------------|---|-----------|
| Calculation method | Minimum Curvature | Rig (23') (KB) to Facility Vertical Datum | 4639.00ft |
| Horizontal Reference Pt | Slot | Rig (23') (KB) to Mean Sea Level | 4639.00ft |
| Vertical Reference Pt | Rig (23') (KB) | Rig (23') (KB) to Ground Level at Slot (SLOT#14 BIGFOOT 11-2-4 (2431'FSL & 470'FWL,SEC.11)) | 23.00ft |
| MD Reference Pt | Rig (23') (KB) | | |
| Field Vertical Reference | Mean Sea Level | | |

| POSITIONAL UNCERTAINTY CALCULATION SETTINGS | | | | | |
|---|------------------|------------------|---------|------------------------------|----------|
| Ellipse Confidence Limit | 3.50 Std Dev | Ellipse Start MD | 23.00ft | Surface Position Uncertainty | included |
| Declination | 7.76° East of TN | Dip Angle | 66.72° | Mag Field Strength | 51850 nT |
| Slot Surface Uncertainty @1SD | | Horizontal | 0.100ft | Vertical | 1.000ft |
| Facility Surface Uncertainty @1SD | | Horizontal | 8.200ft | Vertical | 3.000ft |
| Positional Uncertainty values in the WELLPATH DATA table are the projection of the ellipsoid of uncertainty onto the vertical and horizontal planes | | | | | |



Closest Approach Clearance Summary Report

BIGFOOT 11-2-4 PWP Rev-B.0 - SPE WPTS Stop
Drilling HSE Risk (2017)
Page 2 of 3



REFERENCE WELLPATH IDENTIFICATION

| | | | |
|----------|--|-----------|--------------------|
| Operator | CONFLUENCE RESOURCES | Well | BIGFOOT 11-2-4 |
| Field | WELD COUNTY (NAD83, TRUE NORTH) | API/Legal | |
| Facility | SEC.11-T04N-R63W | Wellbore | BIGFOOT 11-2-4 PWB |
| Slot | SLOT#14 BIGFOOT 11-2-4 (2431'FSL & 470'FWL,SEC.11) | | |

PROXIMITY-SCAN RULE

| | | | |
|----------------------------|--|----------------------|-------|
| Rule Name | SPE WPTS Stop Drilling HSE Risk (2017) | Rule Based On | Ratio |
| Plane of Rule | Closest Approach | Threshold Value | 1.00 |
| Include Casing & Hole Size | yes | Apply Cone of Safety | no |

HOLE & CASING SECTIONS

- Ref Wellbore: BIGFOOT 11-2-4 PWB Ref Wellpath: BIGFOOT 11-2-4 PWP Rev-B.0

| String/Diameter | Start MD [ft] | End MD [ft] | Interval [ft] | Start TVD [ft] | End TVD [ft] | Start N/S [ft] | Start E/W [ft] | End N/S [ft] | End E/W [ft] |
|------------------------|------------------|----------------|------------------|-------------------|-----------------|-------------------|-------------------|-----------------|-----------------|
| 9.625in Casing Surface | 23.00 | 1719.37 | 1696.37 | 23.00 | 1700.00 | 0.00 | 0.00 | 157.61 | -71.88 |

SURVEY PROGRAM - Ref Wellbore: BIGFOOT 11-2-4 PWB Ref Wellpath: BIGFOOT 11-2-4 PWP Rev-B.0

| Start MD [ft] | End MD [ft] | Positional Uncertainty Model | Log Name/Comment | Wellbore |
|------------------|----------------|--|------------------|--------------------|
| 23.00 | 1719.37 | BH NaviTrak (2019) (Standard) | | BIGFOOT 11-2-4 PWB |
| 1719.37 | 11581.65 | BH AutoTrak Curve/eXpress (2019) (Short spacing) | | BIGFOOT 11-2-4 PWB |



Closest Approach Clearance Summary Report

BIGFOOT 11-2-4 PWP Rev-B.0 - SPE WPTS Stop
Drilling HSE Risk (2017)
Page 3 of 3



| REFERENCE WELLPATH IDENTIFICATION | | | |
|-----------------------------------|--|-----------|--------------------|
| Operator | CONFLUENCE RESOURCES | Well | BIGFOOT 11-2-4 |
| Field | WELD COUNTY (NAD83, TRUE NORTH) | API/Legal | |
| Facility | SEC.11-T04N-R63W | Wellbore | BIGFOOT 11-2-4 PWB |
| Slot | SLOT#14 BIGFOOT 11-2-4 (2431'FSL & 470'FWL,SEC.11) | | |

| CALCULATION RANGE & CUTOFF | | |
|----------------------------|-------------------|--------------------|
| From: 23.00ft MD | To: 11581.65ft MD | C-C Cutoff: (none) |

| OFFSET WELL CLEARANCE SUMMARY (17 Offset Wellpaths selected) Ratios are calculated in Closest Approach plane | | | | | | | | | | | | |
|--|---|------------------|----------------------|-----------------------------|-----------------|------------------------|-------------------------|------------------------|--------------------------|-----------|--------------------------|-------------|
| Offset Facility | Offset Slot | Offset Well | Offset Wellbore | Offset Wellpath | Wellbore Status | C-C Clearance Distance | | | Rule Separation Ratio | | | |
| | | | | | | Ref MD [ft] | Min C-C Clear Dist [ft] | Diverging from MD [ft] | Ref MD of Min Ratio [ft] | Min Ratio | Min Ratio Dvrg from [ft] | Rule Status |
| SEC.10-T04N-R63W | SLOT#02 70 RANCH 10-11-2 (2360'FNL & 514'FEL, SEC.10) | 70 RANCH 10-11-2 | 70 RANCH 10-11-2 AWB | 70 RANCH 10-11-2 AWP | Drilling | 5933.36 | 298.85 | 11581.65 | 11581.65 | 0.90 | 11581.65 | FAIL |
| SEC.11-T04N-R63W | SLOT#15 BIGFOOT 11-3-2 (2406'FSL & 470'FWL,SEC.11) | BIGFOOT 11-3-2 | BIGFOOT 11-3-2 PWB | BIGFOOT 11-3-2 PWP Rev-B.0 | Planned | 23.00 | 25.50 | 11570.65 | 11570.65 | 1.01 | 11570.65 | WARN |
| SEC.11-T04N-R63W | SLOT#16 BIGFOOT 11-4-3 (2381'FSL & 470'FWL,SEC.11) | BIGFOOT 11-4-3 | BIGFOOT 11-4-3 PWB | BIGFOOT 11-4-3 PWP Rev-B.0 | Planned | 23.00 | 51.00 | 11523.00 | 11564.33 | 1.45 | 11564.33 | PASS |
| SEC.10-T04N-R63W | SLOT#01 70 RANCH 10-11-1 (2345'FNL & 514'FEL, SEC.10) | 70 RANCH 10-11-1 | 70 RANCH 10-11-1 AWB | 70 RANCH 10-11-1 AWP | Drilling | 5202.58 | 549.50 | 11581.65 | 11581.65 | 2.25 | 11581.65 | PASS |
| SEC.11-T04N-R63W | SLOT#17 BIGFOOT 11-5-1 (2356'FSL & 470'FWL,SEC.11) | BIGFOOT 11-5-1 | BIGFOOT 11-5-1 PWB | BIGFOOT 11-5-1 PWP Rev-B.0 | Planned | 23.00 | 76.50 | 11523.00 | 11571.99 | 2.32 | 11571.99 | PASS |
| SEC.11-T04N-R63W | SLOT#18 BIGFOOT 11-3-4 (2331'FSL & 470'FWL,SEC.11) | BIGFOOT 11-3-4 | BIGFOOT 11-3-4 PWB | BIGFOOT 11-3-4 PWP Rev-B.0 | Planned | 23.00 | 102.04 | 11523.00 | 11579.61 | 2.57 | 11579.61 | PASS |
| SEC.11-T04N-R63W | SLOT#13 BIGFOOT 11-1-4 (2456'FSL & 470'FWL,SEC.11) | BIGFOOT 11-1-4 | BIGFOOT 11-1-4 PWB | BIGFOOT 11-1-4 PWP Rev-B.0 | Planned | 23.00 | 25.50 | 11581.65 | 11581.65 | 2.79 | 11581.65 | PASS |
| SEC.11-T04N-R63W | SLOT#19 BIGFOOT 11-6-2 (2306'FSL & 470'FWL,SEC.11) | BIGFOOT 11-6-2 | BIGFOOT 11-6-2 PWB | BIGFOOT 11-6-2 PWP Rev-B.0 | Planned | 23.00 | 127.54 | 11523.00 | 11581.65 | 3.25 | 11581.65 | PASS |
| SEC.11-T04N-R63W | SLOT#20 BIGFOOT 11-7-3 (2281'FSL & 470'FWL,SEC.11) | BIGFOOT 11-7-3 | BIGFOOT 11-7-3 PWB | BIGFOOT 11-7-3 PWP Rev-B.0 | Planned | 23.00 | 149.39 | 700.00 | 11581.65 | 4.00 | 11581.65 | PASS |
| SEC.11-T04N-R63W | SLOT#01 BIGFOOT 11-8-1 (2455'FSL & 620'FWL,SEC.11) | BIGFOOT 11-8-1 | BIGFOOT 11-8-1 PWB | BIGFOOT 11-8-1 PWP Rev-B.0 | Planned | 23.00 | 152.71 | 700.00 | 11581.65 | 4.85 | 11581.65 | PASS |
| SEC.11-T04N-R63W | SLOT#02 BIGFOOT 11-4-4 (2430'FSL & 620'FWL,SEC.11) | BIGFOOT 11-4-4 | BIGFOOT 11-4-4 PWB | BIGFOOT 11-4-4 PWP Rev-B.0 | Planned | 23.00 | 150.57 | 700.00 | 11581.65 | 5.17 | 11581.65 | PASS |
| SEC.11-T04N-R63W | SLOT#03 BIGFOOT 11-9-2 (2405'FSL & 620'FWL,SEC.11) | BIGFOOT 11-9-2 | BIGFOOT 11-9-2 PWB | BIGFOOT 11-9-2 PWP Rev-B.0 | Planned | 23.00 | 152.14 | 700.00 | 11581.65 | 5.81 | 11581.65 | PASS |
| SEC.11-T04N-R63W | SLOT#04 BIGFOOT 11-10-3 (2380'FSL & 620'FWL,SEC.11) | BIGFOOT 11-10-3 | BIGFOOT 11-10-3 PWB | BIGFOOT 11-10-3 PWP Rev-B.0 | Planned | 23.00 | 157.84 | 700.00 | 11581.65 | 6.59 | 11581.65 | PASS |
| SEC.11-T04N-R63W | SLOT#05 BIGFOOT 11-11-1 (2355'FSL & 620'FWL,SEC.11) | BIGFOOT 11-11-1 | BIGFOOT 11-11-1 PWB | BIGFOOT 11-11-1 PWP Rev-B.0 | Planned | 23.00 | 167.27 | 700.00 | 11581.65 | 7.44 | 11581.65 | PASS |
| SEC.11-T04N-R63W | SLOT#06 BIGFOOT 11-5-4 (2330'FSL & 620'FWL,SEC.11) | BIGFOOT 11-5-4 | BIGFOOT 11-5-4 PWB | BIGFOOT 11-5-4 PWP Rev-B.0 | Planned | 23.00 | 179.85 | 700.00 | 11581.65 | 7.77 | 11581.65 | PASS |

| OFFSET WELL CLEARANCE SUMMARY (17 Offset Wellpaths selected) Ratios are calculated in Closest Approach plane | | | | | | | | | | | | |
|--|---|-----------------|---------------------|-----------------------------|-----------------|------------------------|-------------------------|------------------------|--------------------------|-----------|--------------------------|-------------|
| Offset Facility | Offset Slot | Offset Well | Offset Wellbore | Offset Wellpath | Wellbore Status | C-C Clearance Distance | | | Rule Separation Ratio | | | |
| | | | | | | Ref MD [ft] | Min C-C Clear Dist [ft] | Diverging from MD [ft] | Ref MD of Min Ratio [ft] | Min Ratio | Min Ratio Dvrg from [ft] | Rule Status |
| SEC.11-T04N-R63W | SLOT#07 BIGFOOT 11-12-2 (2305'FSL & 620'FWL,SEC.11) | BIGFOOT 11-12-2 | BIGFOOT 11-12-2 PWB | BIGFOOT 11-12-2 PWP Rev-B.0 | Planned | 23.00 | 197.13 | 623.00 | 11581.65 | 8.41 | 11581.65 | PASS |
| SEC.11-T04N-R63W | SLOT#08 BIGFOOT 11-13-3 (2280'FSL & 620'FWL,SEC.11) | BIGFOOT 11-13-3 | BIGFOOT 11-13-3 PWB | BIGFOOT 11-13-3 PWP Rev-B.0 | Planned | 23.00 | 214.07 | 523.00 | 11581.65 | 9.20 | 11581.65 | PASS |



Closest Approach Clearance Summary Report

BIGFOOT 11-2-4 PWP Rev-B.0 - SPE WPTS Stop
Drilling HSE Risk (2017)
Page 1 of 3



| REFERENCE WELLPATH IDENTIFICATION | | | |
|-----------------------------------|--|-----------|--------------------|
| Operator | CONFLUENCE RESOURCES | Well | BIGFOOT 11-2-4 |
| Field | WELD COUNTY (NAD83, TRUE NORTH) | API/Legal | |
| Facility | SEC.11-T04N-R63W | Wellbore | BIGFOOT 11-2-4 PWB |
| Slot | SLOT#14 BIGFOOT 11-2-4 (2431'FSL & 470'FWL,SEC.11) | | |

| REPORT SETUP INFORMATION | | | |
|--------------------------|---|------------------|-------------------------|
| Projection System | NAD83 / Lambert Colorado SP, Northern Zone (501), US feet | Software System | WellArchitect® 6.0 |
| North Reference | True | User | Painsetr |
| Scale | 0.999958 | Report Generated | 4/26/2022 at 3:23:56 PM |
| Convergence at slot | 0.70° East | Database | WellArchitectDB |

| WELLPATH LOCATION | | | | | | |
|-----------------------|-------------------|----------|------------------|-----------------|------------------------|---------------|
| | Local coordinates | | Grid coordinates | | Geographic coordinates | |
| | North[ft] | East[ft] | Easting[US ft] | Northing[US ft] | Latitude | Longitude |
| Slot Location | -25.50 | -150.57 | 3302958.64 | 1363608.26 | 40.3264100° | -104.4133700° |
| Facility Reference Pt | | | 3303108.87 | 1363635.60 | 40.3264800° | -104.4128300° |
| Field Reference Pt | | | 3230456.90 | 1245096.09 | 40.0032400° | -104.6773400° |

| WELLPATH DATUM | | | |
|--------------------------|-------------------|---|-----------|
| Calculation method | Minimum Curvature | Rig (23') (KB) to Facility Vertical Datum | 4639.00ft |
| Horizontal Reference Pt | Slot | Rig (23') (KB) to Mean Sea Level | 4639.00ft |
| Vertical Reference Pt | Rig (23') (KB) | Rig (23') (KB) to Ground Level at Slot (SLOT#14 BIGFOOT 11-2-4 (2431'FSL & 470'FWL,SEC.11)) | 23.00ft |
| MD Reference Pt | Rig (23') (KB) | | |
| Field Vertical Reference | Mean Sea Level | | |

| POSITIONAL UNCERTAINTY CALCULATION SETTINGS | | | | | |
|---|------------------|------------------|---------|------------------------------|----------|
| Ellipse Confidence Limit | 3.50 Std Dev | Ellipse Start MD | 23.00ft | Surface Position Uncertainty | included |
| Declination | 7.76° East of TN | Dip Angle | 66.72° | Mag Field Strength | 51850 nT |
| Slot Surface Uncertainty @1SD | | Horizontal | 0.100ft | Vertical | 1.000ft |
| Facility Surface Uncertainty @1SD | | Horizontal | 8.200ft | Vertical | 3.000ft |
| Positional Uncertainty values in the WELLPATH DATA table are the projection of the ellipsoid of uncertainty onto the vertical and horizontal planes | | | | | |



Closest Approach Clearance Summary Report

BIGFOOT 11-2-4 PWP Rev-B.0 - SPE WPTS Stop
Drilling HSE Risk (2017)
Page 2 of 3



| REFERENCE WELLPATH IDENTIFICATION | | | |
|-----------------------------------|--|-----------|--------------------|
| Operator | CONFLUENCE RESOURCES | Well | BIGFOOT 11-2-4 |
| Field | WELD COUNTY (NAD83, TRUE NORTH) | API/Legal | |
| Facility | SEC.11-T04N-R63W | Wellbore | BIGFOOT 11-2-4 PWB |
| Slot | SLOT#14 BIGFOOT 11-2-4 (2431'FSL & 470'FWL,SEC.11) | | |

| PROXIMITY-SCAN RULE | | | |
|----------------------------|--|----------------------|-------|
| Rule Name | SPE WPTS Stop Drilling HSE Risk (2017) | Rule Based On | Ratio |
| Plane of Rule | Closest Approach | Threshold Value | 1.00 |
| Include Casing & Hole Size | yes | Apply Cone of Safety | no |

| HOLE & CASING SECTIONS | | | | | | | | | |
|--|------------------|----------------|------------------|-------------------|-----------------|-------------------|-------------------|-----------------|-----------------|
| - Ref Wellbore: BIGFOOT 11-2-4 PWB Ref Wellpath: BIGFOOT 11-2-4 PWP Rev-B.0 | | | | | | | | | |
| String/Diameter | Start MD [ft] | End MD [ft] | Interval [ft] | Start TVD [ft] | End TVD [ft] | Start N/S [ft] | Start E/W [ft] | End N/S [ft] | End E/W [ft] |
| 9.625in Casing Surface | 23.00 | 1719.37 | 1696.37 | 23.00 | 1700.00 | 0.00 | 0.00 | 157.61 | -71.88 |

| SURVEY PROGRAM - Ref Wellbore: BIGFOOT 11-2-4 PWB Ref Wellpath: BIGFOOT 11-2-4 PWP Rev-B.0 | | | | |
|---|----------------|--|------------------|--------------------|
| Start MD [ft] | End MD [ft] | Positional Uncertainty Model | Log Name/Comment | Wellbore |
| 23.00 | 1719.37 | BH NaviTrak (2019) (Standard) | | BIGFOOT 11-2-4 PWB |
| 1719.37 | 11581.65 | BH AutoTrak Curve/eXpress (2019) (Short spacing) | | BIGFOOT 11-2-4 PWB |



Closest Approach Clearance Summary Report

**BIGFOOT 11-2-4 PWP Rev-B.0 - SPE WPTS Stop
Drilling HSE Risk (2017)**
Page 3 of 3



| REFERENCE WELLPATH IDENTIFICATION | | | |
|-----------------------------------|--|-----------|--------------------|
| Operator | CONFLUENCE RESOURCES | Well | BIGFOOT 11-2-4 |
| Field | WELD COUNTY (NAD83, TRUE NORTH) | API/Legal | |
| Facility | SEC.11-T04N-R63W | Wellbore | BIGFOOT 11-2-4 PWB |
| Slot | SLOT#14 BIGFOOT 11-2-4 (2431'FSL & 470'FWL,SEC.11) | | |

| CALCULATION RANGE & CUTOFF | | |
|----------------------------|-------------------|--------------------|
| From: 23.00ft MD | To: 11581.65ft MD | C-C Cutoff: (none) |

| OFFSET WELL CLEARANCE SUMMARY (17 Offset Wellpaths selected) Ratios are calculated in Closest Approach plane | | | | | | | | | | | | |
|--|---|------------------|----------------------|-----------------------------|-----------------|------------------------|-------------------------|------------------------|--------------------------|-----------|--------------------------|-------------|
| Offset Facility | Offset Slot | Offset Well | Offset Wellbore | Offset Wellpath | Wellbore Status | C-C Clearance Distance | | | Rule Separation Ratio | | | |
| | | | | | | Ref MD [ft] | Min C-C Clear Dist [ft] | Diverging from MD [ft] | Ref MD of Min Ratio [ft] | Min Ratio | Min Ratio Dvrg from [ft] | Rule Status |
| SEC.10-T04N-R63W | SLOT#02 70 RANCH 10-11-2 (2360'FNL & 514'FEL, SEC.10) | 70 RANCH 10-11-2 | 70 RANCH 10-11-2 AWB | 70 RANCH 10-11-2 AWP | Drilling | 5933.36 | 298.85 | 11581.65 | 11581.65 | 0.90 | 11581.65 | FAIL |
| SEC.11-T04N-R63W | SLOT#15 BIGFOOT 11-3-2 (2406'FSL & 470'FWL,SEC.11) | BIGFOOT 11-3-2 | BIGFOOT 11-3-2 PWB | BIGFOOT 11-3-2 PWP Rev-B.0 | Planned | 23.00 | 25.50 | 11570.65 | 11570.65 | 1.01 | 11570.65 | WARN |
| SEC.11-T04N-R63W | SLOT#16 BIGFOOT 11-4-3 (2381'FSL & 470'FWL,SEC.11) | BIGFOOT 11-4-3 | BIGFOOT 11-4-3 PWB | BIGFOOT 11-4-3 PWP Rev-B.0 | Planned | 23.00 | 51.00 | 11523.00 | 11564.33 | 1.45 | 11564.33 | PASS |
| SEC.10-T04N-R63W | SLOT#01 70 RANCH 10-11-1 (2345'FNL & 514'FEL, SEC.10) | 70 RANCH 10-11-1 | 70 RANCH 10-11-1 AWB | 70 RANCH 10-11-1 AWP | Drilling | 5202.58 | 549.50 | 11581.65 | 11581.65 | 2.25 | 11581.65 | PASS |
| SEC.11-T04N-R63W | SLOT#17 BIGFOOT 11-5-1 (2356'FSL & 470'FWL,SEC.11) | BIGFOOT 11-5-1 | BIGFOOT 11-5-1 PWB | BIGFOOT 11-5-1 PWP Rev-B.0 | Planned | 23.00 | 76.50 | 11523.00 | 11571.99 | 2.32 | 11571.99 | PASS |
| SEC.11-T04N-R63W | SLOT#18 BIGFOOT 11-3-4 (2331'FSL & 470'FWL,SEC.11) | BIGFOOT 11-3-4 | BIGFOOT 11-3-4 PWB | BIGFOOT 11-3-4 PWP Rev-B.0 | Planned | 23.00 | 102.04 | 11523.00 | 11579.61 | 2.57 | 11579.61 | PASS |
| SEC.11-T04N-R63W | SLOT#13 BIGFOOT 11-1-4 (2456'FSL & 470'FWL,SEC.11) | BIGFOOT 11-1-4 | BIGFOOT 11-1-4 PWB | BIGFOOT 11-1-4 PWP Rev-B.0 | Planned | 23.00 | 25.50 | 11581.65 | 11581.65 | 2.79 | 11581.65 | PASS |
| SEC.11-T04N-R63W | SLOT#19 BIGFOOT 11-6-2 (2306'FSL & 470'FWL,SEC.11) | BIGFOOT 11-6-2 | BIGFOOT 11-6-2 PWB | BIGFOOT 11-6-2 PWP Rev-B.0 | Planned | 23.00 | 127.54 | 11523.00 | 11581.65 | 3.25 | 11581.65 | PASS |
| SEC.11-T04N-R63W | SLOT#20 BIGFOOT 11-7-3 (2281'FSL & 470'FWL,SEC.11) | BIGFOOT 11-7-3 | BIGFOOT 11-7-3 PWB | BIGFOOT 11-7-3 PWP Rev-B.0 | Planned | 23.00 | 149.39 | 700.00 | 11581.65 | 4.00 | 11581.65 | PASS |
| SEC.11-T04N-R63W | SLOT#01 BIGFOOT 11-8-1 (2455'FSL & 620'FWL,SEC.11) | BIGFOOT 11-8-1 | BIGFOOT 11-8-1 PWB | BIGFOOT 11-8-1 PWP Rev-B.0 | Planned | 23.00 | 152.71 | 700.00 | 11581.65 | 4.85 | 11581.65 | PASS |
| SEC.11-T04N-R63W | SLOT#02 BIGFOOT 11-4-4 (2430'FSL & 620'FWL,SEC.11) | BIGFOOT 11-4-4 | BIGFOOT 11-4-4 PWB | BIGFOOT 11-4-4 PWP Rev-B.0 | Planned | 23.00 | 150.57 | 700.00 | 11581.65 | 5.17 | 11581.65 | PASS |
| SEC.11-T04N-R63W | SLOT#03 BIGFOOT 11-9-2 (2405'FSL & 620'FWL,SEC.11) | BIGFOOT 11-9-2 | BIGFOOT 11-9-2 PWB | BIGFOOT 11-9-2 PWP Rev-B.0 | Planned | 23.00 | 152.14 | 700.00 | 11581.65 | 5.81 | 11581.65 | PASS |
| SEC.11-T04N-R63W | SLOT#04 BIGFOOT 11-10-3 (2380'FSL & 620'FWL,SEC.11) | BIGFOOT 11-10-3 | BIGFOOT 11-10-3 PWB | BIGFOOT 11-10-3 PWP Rev-B.0 | Planned | 23.00 | 157.84 | 700.00 | 11581.65 | 6.59 | 11581.65 | PASS |
| SEC.11-T04N-R63W | SLOT#05 BIGFOOT 11-11-1 (2355'FSL & 620'FWL,SEC.11) | BIGFOOT 11-11-1 | BIGFOOT 11-11-1 PWB | BIGFOOT 11-11-1 PWP Rev-B.0 | Planned | 23.00 | 167.27 | 700.00 | 11581.65 | 7.44 | 11581.65 | PASS |
| SEC.11-T04N-R63W | SLOT#06 BIGFOOT 11-5-4 (2330'FSL & 620'FWL,SEC.11) | BIGFOOT 11-5-4 | BIGFOOT 11-5-4 PWB | BIGFOOT 11-5-4 PWP Rev-B.0 | Planned | 23.00 | 179.85 | 700.00 | 11581.65 | 7.77 | 11581.65 | PASS |

| OFFSET WELL CLEARANCE SUMMARY (17 Offset Wellpaths selected) Ratios are calculated in Closest Approach plane | | | | | | | | | | | | |
|--|---|-----------------|---------------------|-----------------------------|-----------------|------------------------|-------------------------|------------------------|--------------------------|-----------|--------------------------|-------------|
| Offset Facility | Offset Slot | Offset Well | Offset Wellbore | Offset Wellpath | Wellbore Status | C-C Clearance Distance | | | Rule Separation Ratio | | | |
| | | | | | | Ref MD [ft] | Min C-C Clear Dist [ft] | Diverging from MD [ft] | Ref MD of Min Ratio [ft] | Min Ratio | Min Ratio Dvrg from [ft] | Rule Status |
| SEC.11-T04N-R63W | SLOT#07 BIGFOOT 11-12-2 (2305'FSL & 620'FWL,SEC.11) | BIGFOOT 11-12-2 | BIGFOOT 11-12-2 PWB | BIGFOOT 11-12-2 PWP Rev-B.0 | Planned | 23.00 | 197.13 | 623.00 | 11581.65 | 8.41 | 11581.65 | PASS |
| SEC.11-T04N-R63W | SLOT#08 BIGFOOT 11-13-3 (2280'FSL & 620'FWL,SEC.11) | BIGFOOT 11-13-3 | BIGFOOT 11-13-3 PWB | BIGFOOT 11-13-3 PWP Rev-B.0 | Planned | 23.00 | 214.07 | 523.00 | 11581.65 | 9.20 | 11581.65 | PASS |