

CONFLUENCE RESOURCES



Location: COLORADO Slot: SLOT#13 BIGFOOT 11-1-4 (2456'FSL & 470'FWL,SEC.11)

Field: WELD COUNTY (NAD83, TRUE NORTH) Well: BIGFOOT 11-1-4

Facility: SEC.11-T04N-R63W Wellbore: BIGFOOT 11-1-4 PWB

Plot reference wellpath is BIGFOOT 11-1-4 PWP RevB.0

True vertical depths are referenced to Rig (23) (KB)

Reference wellpath measured depths are referenced to Rig (23) (KB)

Rig (23) (KB) to Mean Sea Level: 4639 feet

Mean Sea Level to Ground level (At Slot: SLOT#13 BIGFOOT 11-1-4 (2456'FSL & 470'FWL,SEC.11)): -4616 feet

Offset wellpath MDs are referenced to each path's default MD datum

Grid System: NAD83 / Lambert Colorado SP, Northern Zone (501), US feet

North Reference: True north

Scale: True distance

Coordinates are in feet referenced to Slot

Depths are in feet

Created by: painseir on 2022-04-26; Database: WellArchitectDB

Location Information

Facility Name	Grid East (US ft)	Grid North (US ft)	Latitude	Longitude
SEC.11-T04N-R63W	3303108.873	1363635.600	40°19'35.3280"N	104°24'46.1880"W
Slot	Local N (ft)	Local E (ft)	Grid East (US ft)	Grid North (US ft)
SLOT#13 BIGFOOT 11-1-4 (2456'FSL & 470'FWL,SEC.11)	0.00	-150.57	3302958.326	1363633.755
Rig (23) (KB) to Ground level (At Slot: SLOT#13 BIGFOOT 11-1-4 (2456'FSL & 470'FWL,SEC.11))				23ft
Mean Sea Level to Ground level (At Slot: SLOT#13 BIGFOOT 11-1-4 (2456'FSL & 470'FWL,SEC.11))				-4616ft
Rig (23) (KB) to Mean Sea Level				4639ft

Hole and Casing Sections

Name	Start MD (ft)	End MD (ft)	Interval (ft)	Start TVD (ft)	End TVD (ft)	Start Local N (ft)	Start Local E (ft)	End Local N (ft)	End Local E (ft)	Wellbore
9.625in Casing Surface	23.00	1764.77	1741.77	23.00	1700.00	0.00	0.00	369.08	-97.45	BIGFOOT 11-1-4 PWB

Survey Program

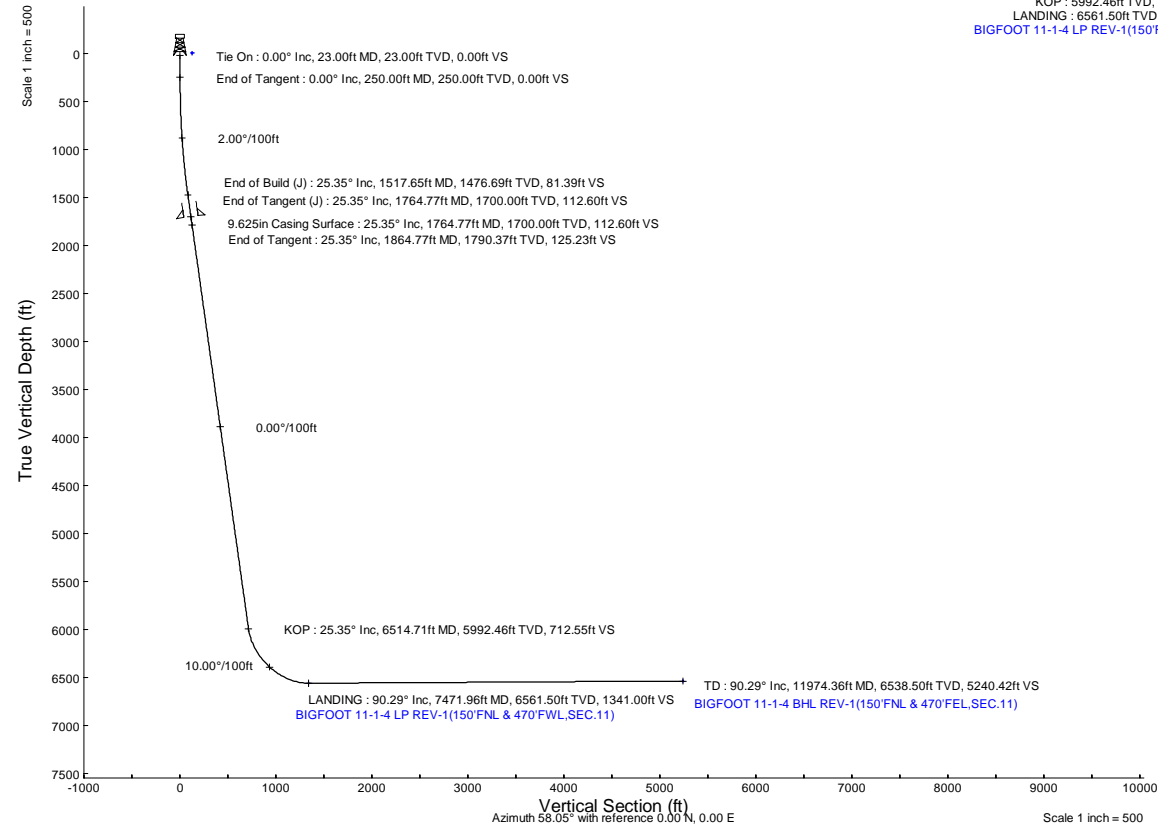
Start MD (ft)	End MD (ft)	Tool	Model	Log Name/Comment	Wellbore
23.00	1764.77	BH NavTrak (2019)	BH NavTrak (2019) (Standard)		BIGFOOT 11-1-4 PWB
1764.77	11974.36	BH AutoTrak Curve/xpress (2019)	BH AutoTrak Curve/xpress (2019) (Short spacing)		BIGFOOT 11-1-4 PWB

Bottom Hole Location

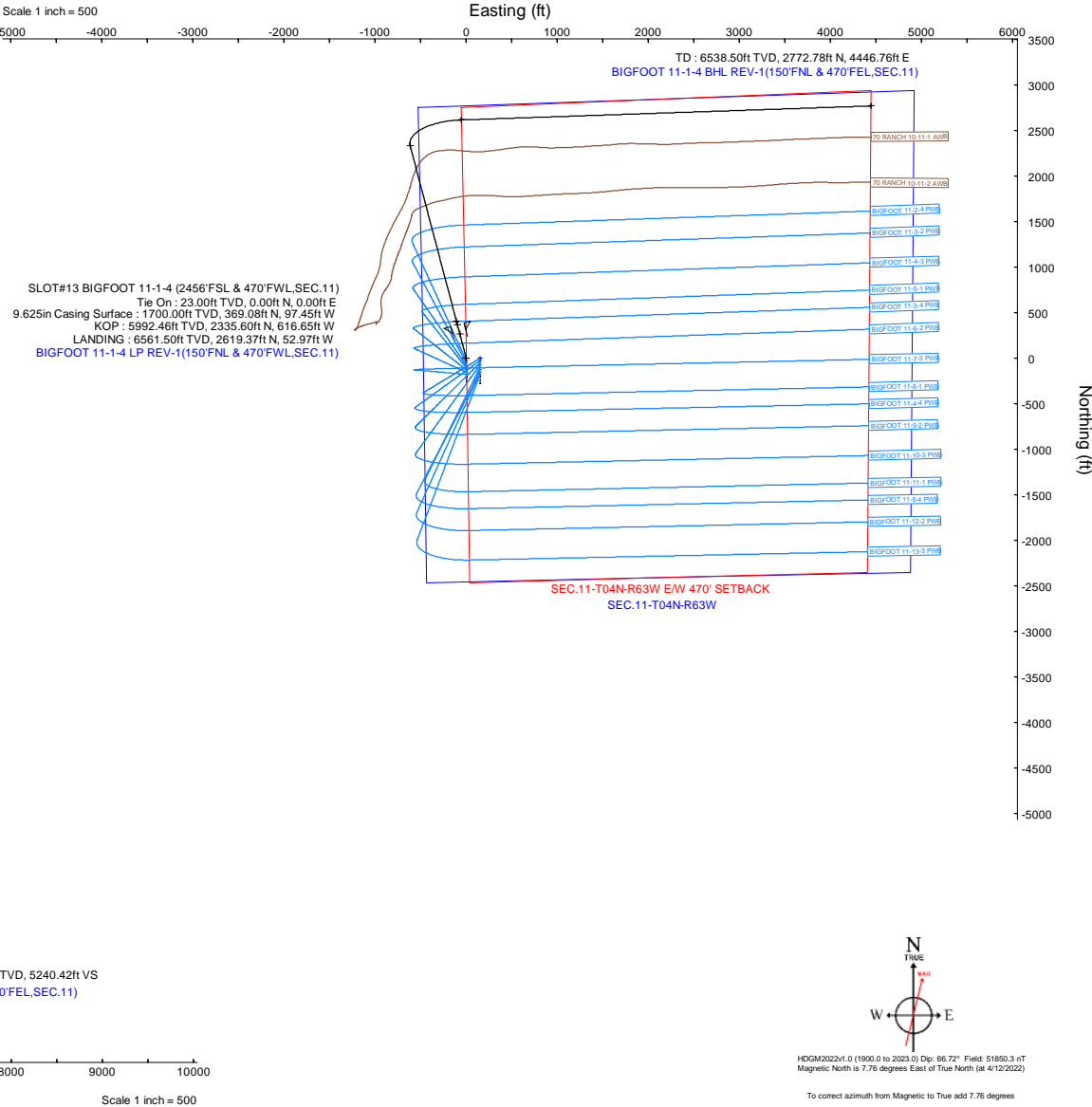
MD (ft)	Inc (°)	Az (°)	TVD (ft)	Local N (ft)	Local E (ft)	Grid East (US ft)	Grid North (US ft)	Latitude	Longitude
11974.36	90.293	88.047	6538.50	2772.78	4446.76	3307370.58	1366460.69	40°20'2.7240"N	104°23'50.7120"W

Targets

Name	MD (ft)	TVD (ft)	Local N (ft)	Local E (ft)	Grid East (US ft)	Grid North (US ft)	Latitude	Longitude
SEC.11-T04N-R63W	N/A	-2.50	0.00	150.57	3303108.87	1363635.60	40°19'35.3280"N	104°24'46.1880"W
SEC.11-T04N-R63W E/W 470' SETBACK	N/A	-2.50	0.00	150.57	3303108.87	1363635.60	40°19'35.3280"N	104°24'46.1880"W
BIGFOOT 11-1-4 BHL REV-1(150'FNL & 470'FEL,SEC.11)	11974.36	6538.50	2772.78	4446.76	3307370.58	1366460.69	40°20'2.7240"N	104°23'50.7120"W
BIGFOOT 11-1-4 LP REV-1(150'FNL & 470'FWL,SEC.11)	7471.96	6561.50	2619.37	-52.97	3302873.27	1366252.17	40°20'1.2120"N	104°24'48.8160"W



Well Profile Data								
Design Comment	MD (ft)	Inc (°)	Az (°)	TVD (ft)	Local N (ft)	Local E (ft)	DLS (°/100ft)	VS (ft)
Tie On	23.00	0.000	345.210	23.00	0.00	0.00	0.00	0.00
End of Tangent	250.00	0.000	345.210	250.00	0.00	0.00	0.00	0.00
End of Build (J)	1517.65	25.353	345.210	1476.69	266.78	-70.44	2.00	81.39
End of Tangent (J)	1764.77	25.353	345.210	1700.00	369.08	-97.45	0.00	112.60
End of Tangent	1864.77	25.353	345.210	1790.37	410.48	-108.38	0.00	125.23
KOP	6514.71	25.353	345.210	5992.46	2335.60	-616.65	0.00	712.55
LANDING	7471.96	90.293	88.047	6561.50	2619.37	-52.97	10.00	1341.00
TD	11974.36	90.293	88.047	6538.50	2772.78	4446.76	0.00	5240.42



HOGM2022v1.0 (1900.0 to 2023.0) Dp: 66.72" Field: 51850.3 nT
Magnetic North is 7.76 degrees East of True North (at 4/12/2022)

To correct azimuth from Magnetic to True add 7.76 degrees



Planned Wellpath Report

BIGFOOT 11-1-4 PWP Rev-B.0

Page 1 of 8



REFERENCE WELLPATH IDENTIFICATION

Operator	CONFLUENCE RESOURCES	Well	BIGFOOT 11-1-4
Field	WELD COUNTY (NAD83, TRUE NORTH)	API/Legal	
Facility	SEC.11-T04N-R63W	Wellbore	BIGFOOT 11-1-4 PWB
Slot	SLOT#13 BIGFOOT 11-1-4 (2456'FSL & 470'FWL,SEC.11)		

REPORT SETUP INFORMATION

Projection System	NAD83 / Lambert Colorado SP, Northern Zone (501), US feet	Software System	WellArchitect® 6.0
North Reference	True	User	Painsetr
Scale	0.999958	Report Generated	4/26/2022 at 3:18:17 PM
Convergence at slot	0.70° East	Database	WellArchitectDB

WELLPATH LOCATION

	Local coordinates		Grid coordinates		Geographic coordinates	
	North[ft]	East[ft]	Easting[US ft]	Northing[US ft]	Latitude	Longitude
Slot Location	0.00	-150.57	3302958.33	1363633.76	40.3264800°	-104.4133700°
Facility Reference Pt			3303108.87	1363635.60	40.3264800°	-104.4128300°
Field Reference Pt			3230456.90	1245096.09	40.0032400°	-104.6773400°

WELLPATH DATUM

Calculation method	Minimum curvature	Rig (23') (KB) to Facility Vertical Datum	4639.00ft
Horizontal Reference Pt	Slot	Rig (23') (KB) to Mean Sea Level	4639.00ft
Vertical Reference Pt	Rig (23') (KB)	Rig (23') (KB) to Ground Level at Slot (SLOT#13 BIGFOOT 11-1-4 (2456'FSL & 470'FWL,SEC.11))	23.00ft
MD Reference Pt	Rig (23') (KB)	Section Origin	N 0.00, E 0.00 ft
Field Vertical Reference	Mean Sea Level	Section Azimuth	58.05°

Planned Wellpath Report

BIGFOOT 11-1-4 PWP Rev-B.0

Page 2 of 8

REFERENCE WELLPATH IDENTIFICATION

Operator	CONFLUENCE RESOURCES	Well	BIGFOOT 11-1-4
Field	WELD COUNTY (NAD83, TRUE NORTH)	API/Legal	
Facility	SEC.11-T04N-R63W	Wellbore	BIGFOOT 11-1-4 PWB
Slot	SLOT#13 BIGFOOT 11-1-4 (2456'FSL & 470'FWL,SEC.11)		

WELLPATH DATA (128 stations) † = interpolated, ‡ = extrapolated station

MD [ft]	Inclination [°]	Azimuth [°]	TVD [ft]	Vert Sect [ft]	North [ft]	East [ft]	Grid East [US ft]	Grid North [US ft]	Latitude	Longitude	DLS [°/100ft]	Comments
0.00†	0.000	345.210	0.00	0.00	0.00	0.00	3302958.33	1363633.75	40.3264800	-104.4133700	0.00	
23.00	0.000	345.210	23.00	0.00	0.00	0.00	3302958.33	1363633.75	40.3264800	-104.4133700	0.00	Tie On
123.00†	0.000	345.210	123.00	0.00	0.00	0.00	3302958.33	1363633.75	40.3264800	-104.4133700	0.00	
223.00†	0.000	345.210	223.00	0.00	0.00	0.00	3302958.33	1363633.75	40.3264800	-104.4133700	0.00	
250.00	0.000	345.210	250.00	0.00	0.00	0.00	3302958.33	1363633.75	40.3264800	-104.4133700	0.00	End of Tangent
323.00†	1.460	345.210	322.99	0.27	0.90	-0.24	3302958.08	1363634.65	40.3264825	-104.4133709	2.00	
423.00†	3.460	345.210	422.89	1.54	5.05	-1.33	3302956.93	1363638.79	40.3264939	-104.4133748	2.00	
523.00†	5.460	345.210	522.59	3.83	12.57	-3.32	3302954.85	1363646.28	40.3265145	-104.4133819	2.00	
623.00†	7.460	345.210	621.95	7.15	23.44	-6.19	3302951.85	1363657.12	40.3265444	-104.4133922	2.00	
723.00†	9.460	345.210	720.85	11.49	37.67	-9.95	3302947.92	1363671.30	40.3265834	-104.4134057	2.00	
823.00†	11.460	345.210	819.19	16.85	55.22	-14.58	3302943.07	1363688.79	40.3266316	-104.4134223	2.00	
923.00†	13.460	345.210	916.83	23.21	76.08	-20.09	3302937.31	1363709.58	40.3266888	-104.4134420	2.00	
1023.00†	15.460	345.210	1013.65	30.58	100.22	-26.46	3302930.64	1363733.64	40.3267551	-104.4134649	2.00	
1123.00†	17.460	345.210	1109.55	38.93	127.62	-33.69	3302923.07	1363760.94	40.3268303	-104.4134908	2.00	
1223.00†	19.460	345.210	1204.40	48.27	158.23	-41.78	3302914.62	1363791.45	40.3269143	-104.4135198	2.00	
1323.00†	21.460	345.210	1298.09	58.58	192.03	-50.70	3302905.28	1363825.14	40.3270071	-104.4135518	2.00	
1423.00†	23.460	345.210	1390.50	69.85	228.96	-60.45	3302895.08	1363861.95	40.3271085	-104.4135868	2.00	
1517.65	25.353	345.210	1476.69	81.39	266.78	-70.44	3302884.63	1363899.64	40.3272123	-104.4136226	2.00	End of Build (J)
1523.00†	25.353	345.210	1481.52	82.06	268.99	-71.02	3302884.02	1363901.84	40.3272184	-104.4136247	0.00	
1623.00†	25.353	345.210	1571.89	94.69	310.39	-81.95	3302872.58	1363943.10	40.3273320	-104.4136639	0.00	
1723.00†	25.353	345.210	1662.26	107.32	351.79	-92.88	3302861.14	1363984.37	40.3274456	-104.4137031	0.00	
1764.77	25.353	345.210	1700.00	112.60	369.08	-97.45	3302856.37	1364001.60	40.3274931	-104.4137195	0.00	End of Tangent (J)
1823.00†	25.353	345.210	1752.63	119.95	393.19	-103.81	3302849.71	1364025.63	40.3275593	-104.4137423	0.00	
1864.77	25.353	345.210	1790.37	125.23	410.48	-108.38	3302844.93	1364042.86	40.3276067	-104.4137587	0.00	End of Tangent
1923.00†	25.353	345.210	1842.99	132.58	434.59	-114.74	3302838.27	1364066.89	40.3276729	-104.4137815	0.00	
2023.00†	25.353	345.210	1933.36	145.21	475.99	-125.67	3302826.83	1364108.15	40.3277866	-104.4138207	0.00	
2123.00†	25.353	345.210	2023.73	157.84	517.39	-136.60	3302815.40	1364149.41	40.3279002	-104.4138599	0.00	
2223.00†	25.353	345.210	2114.10	170.48	558.80	-147.54	3302803.96	1364190.68	40.3280139	-104.4138991	0.00	
2323.00†	25.353	345.210	2204.47	183.11	600.20	-158.47	3302792.52	1364231.94	40.3281275	-104.4139384	0.00	
2423.00†	25.353	345.210	2294.84	195.74	641.60	-169.40	3302781.09	1364273.20	40.3282411	-104.4139776	0.00	



Planned Wellpath Report

BIGFOOT 11-1-4 PWP Rev-B.0

Page 3 of 8



REFERENCE WELLPATH IDENTIFICATION

Operator	CONFLUENCE RESOURCES	Well	BIGFOOT 11-1-4
Field	WELD COUNTY (NAD83, TRUE NORTH)	API/Legal	
Facility	SEC.11-T04N-R63W	Wellbore	BIGFOOT 11-1-4 PWB
Slot	SLOT#13 BIGFOOT 11-1-4 (2456'FSL & 470'FWL,SEC.11)		

WELLPATH DATA (128 stations) † = interpolated, ‡ = extrapolated station

MD [ft]	Inclination [°]	Azimuth [°]	TVD [ft]	Vert Sect [ft]	North [ft]	East [ft]	Grid East [US ft]	Grid North [US ft]	Latitude	Longitude	DLS [°/100ft]	Comments
2523.00†	25.353	345.210	2385.21	208.37	683.00	-180.33	3302769.65	1364314.46	40.3283548	-104.4140168	0.00	
2623.00†	25.353	345.210	2475.58	221.00	724.40	-191.26	3302758.21	1364355.72	40.3284684	-104.4140560	0.00	
2723.00†	25.353	345.210	2565.94	233.63	765.80	-202.19	3302746.78	1364396.98	40.3285821	-104.4140952	0.00	
2823.00†	25.353	345.210	2656.31	246.26	807.20	-213.12	3302735.34	1364438.25	40.3286957	-104.4141344	0.00	
2923.00†	25.353	345.210	2746.68	258.89	848.60	-224.05	3302723.90	1364479.51	40.3288093	-104.4141736	0.00	
3023.00†	25.353	345.210	2837.05	271.52	890.00	-234.98	3302712.47	1364520.77	40.3289230	-104.4142128	0.00	
3123.00†	25.353	345.210	2927.42	284.15	931.40	-245.91	3302701.03	1364562.03	40.3290366	-104.4142520	0.00	
3223.00†	25.353	345.210	3017.79	296.78	972.80	-256.84	3302689.59	1364603.29	40.3291503	-104.4142912	0.00	
3323.00†	25.353	345.210	3108.16	309.41	1014.20	-267.77	3302678.16	1364644.56	40.3292639	-104.4143304	0.00	
3423.00†	25.353	345.210	3198.52	322.04	1055.60	-278.70	3302666.72	1364685.82	40.3293776	-104.4143696	0.00	
3523.00†	25.353	345.210	3288.89	334.67	1097.01	-289.64	3302655.28	1364727.08	40.3294912	-104.4144088	0.00	
3623.00†	25.353	345.210	3379.26	347.30	1138.41	-300.57	3302643.85	1364768.34	40.3296048	-104.4144480	0.00	
3723.00†	25.353	345.210	3469.63	359.93	1179.81	-311.50	3302632.41	1364809.60	40.3297185	-104.4144872	0.00	
3823.00†	25.353	345.210	3560.00	372.56	1221.21	-322.43	3302620.97	1364850.87	40.3298321	-104.4145264	0.00	
3923.00†	25.353	345.210	3650.37	385.19	1262.61	-333.36	3302609.54	1364892.13	40.3299458	-104.4145656	0.00	
4023.00†	25.353	345.210	3740.74	397.82	1304.01	-344.29	3302598.10	1364933.39	40.3300594	-104.4146049	0.00	
4123.00†	25.353	345.210	3831.10	410.45	1345.41	-355.22	3302586.66	1364974.65	40.3301731	-104.4146441	0.00	
4223.00†	25.353	345.210	3921.47	423.09	1386.81	-366.15	3302575.23	1365015.91	40.3302867	-104.4146833	0.00	
4323.00†	25.353	345.210	4011.84	435.72	1428.21	-377.08	3302563.79	1365057.18	40.3304003	-104.4147225	0.00	
4423.00†	25.353	345.210	4102.21	448.35	1469.61	-388.01	3302552.35	1365098.44	40.3305140	-104.4147617	0.00	
4523.00†	25.353	345.210	4192.58	460.98	1511.01	-398.94	3302540.92	1365139.70	40.3306276	-104.4148009	0.00	
4623.00†	25.353	345.210	4282.95	473.61	1552.42	-409.87	3302529.48	1365180.96	40.3307413	-104.4148401	0.00	
4723.00†	25.353	345.210	4373.32	486.24	1593.82	-420.80	3302518.04	1365222.22	40.3308549	-104.4148793	0.00	
4823.00†	25.353	345.210	4463.69	498.87	1635.22	-431.73	3302506.61	1365263.49	40.3309686	-104.4149185	0.00	
4923.00†	25.353	345.210	4554.05	511.50	1676.62	-442.67	3302495.17	1365304.75	40.3310822	-104.4149577	0.00	
5023.00†	25.353	345.210	4644.42	524.13	1718.02	-453.60	3302483.73	1365346.01	40.3311958	-104.4149969	0.00	
5123.00†	25.353	345.210	4734.79	536.76	1759.42	-464.53	3302472.30	1365387.27	40.3313095	-104.4150361	0.00	
5223.00†	25.353	345.210	4825.16	549.39	1800.82	-475.46	3302460.86	1365428.54	40.3314231	-104.4150753	0.00	
5323.00†	25.353	345.210	4915.53	562.02	1842.22	-486.39	3302449.42	1365469.80	40.3315368	-104.4151146	0.00	
5423.00†	25.353	345.210	5005.90	574.65	1883.62	-497.32	3302437.99	1365511.06	40.3316504	-104.4151538	0.00	

Planned Wellpath Report

BIGFOOT 11-1-4 PWP Rev-B.0

Page 4 of 8

REFERENCE WELLPATH IDENTIFICATION

Operator	CONFLUENCE RESOURCES	Well	BIGFOOT 11-1-4
Field	WELD COUNTY (NAD83, TRUE NORTH)	API/Legal	
Facility	SEC.11-T04N-R63W	Wellbore	BIGFOOT 11-1-4 PWB
Slot	SLOT#13 BIGFOOT 11-1-4 (2456'FSL & 470'FWL,SEC.11)		

WELLPATH DATA (128 stations) † = interpolated, ‡ = extrapolated station

MD [ft]	Inclination [°]	Azimuth [°]	TVD [ft]	Vert Sect [ft]	North [ft]	East [ft]	Grid East [US ft]	Grid North [US ft]	Latitude	Longitude	DLS [°/100ft]	Comments
5523.00†	25.353	345.210	5096.27	587.28	1925.02	-508.25	3302426.55	1365552.32	40.3317640	-104.4151930	0.00	
5623.00†	25.353	345.210	5186.63	599.91	1966.43	-519.18	3302415.11	1365593.58	40.3318777	-104.4152322	0.00	
5723.00†	25.353	345.210	5277.00	612.55	2007.83	-530.11	3302403.68	1365634.85	40.3319913	-104.4152714	0.00	
5823.00†	25.353	345.210	5367.37	625.18	2049.23	-541.04	3302392.24	1365676.11	40.3321050	-104.4153106	0.00	
5923.00†	25.353	345.210	5457.74	637.81	2090.63	-551.97	3302380.80	1365717.37	40.3322186	-104.4153498	0.00	
6023.00†	25.353	345.210	5548.11	650.44	2132.03	-562.90	3302369.37	1365758.63	40.3323323	-104.4153890	0.00	
6123.00†	25.353	345.210	5638.48	663.07	2173.43	-573.83	3302357.93	1365799.89	40.3324459	-104.4154282	0.00	
6223.00†	25.353	345.210	5728.84	675.70	2214.83	-584.76	3302346.49	1365841.16	40.3325595	-104.4154674	0.00	
6323.00†	25.353	345.210	5819.21	688.33	2256.23	-595.69	3302335.06	1365882.42	40.3326732	-104.4155066	0.00	
6423.00†	25.353	345.210	5909.58	700.96	2297.63	-606.62	3302323.62	1365923.68	40.3327868	-104.4155459	0.00	
6514.71	25.353	345.210	5992.46	712.55	2335.60	-616.65	3302313.13	1365961.52	40.3328911	-104.4155818	0.00	KOP
6523.00†	25.200	347.118	5999.96	713.64	2339.04	-617.50	3302312.24	1365964.95	40.3329005	-104.4155848	10.00	
6623.00†	25.358	10.668	6090.61	735.15	2380.94	-618.28	3302310.95	1366006.84	40.3330155	-104.4155877	10.00	
6723.00†	28.953	31.243	6179.77	771.34	2422.79	-601.72	3302326.99	1366048.88	40.3331304	-104.4155283	10.00	
6823.00†	34.936	46.481	6264.73	821.13	2463.30	-568.32	3302359.89	1366089.80	40.3332416	-104.4154085	10.00	
6923.00†	42.297	57.378	6342.90	882.98	2501.26	-519.09	3302408.65	1366128.35	40.3333458	-104.4152319	10.00	
7023.00†	50.427	65.453	6411.91	955.03	2535.50	-455.53	3302471.78	1366163.37	40.3334398	-104.4150039	10.00	
7123.00†	58.996	71.784	6469.66	1035.09	2564.98	-379.57	3302547.37	1366193.78	40.3335207	-104.4147315	10.00	
7223.00†	67.822	77.051	6514.40	1120.72	2588.82	-293.52	3302633.12	1366218.67	40.3335861	-104.4144228	10.00	
7323.00†	76.797	81.686	6544.77	1209.32	2606.28	-199.99	3302726.43	1366237.27	40.3336340	-104.4140873	10.00	
7423.00†	85.849	85.990	6559.85	1298.20	2616.83	-101.83	3302824.45	1366249.02	40.3336630	-104.4137352	10.00	
7471.96	90.293	88.047	6561.50†	1341.00	2619.37	-52.97	3302873.27	1366252.17	40.3336700	-104.4135600	10.00	LANDING
7523.00†	90.293	88.047	6561.24	1385.20	2621.11	-1.96	3302924.25	1366254.53	40.3336748	-104.4133770	0.00	
7623.00†	90.293	88.047	6560.73	1471.81	2624.52	97.98	3303024.13	1366259.16	40.3336841	-104.4130186	0.00	
7723.00†	90.293	88.047	6560.22	1558.42	2627.93	197.92	3303124.02	1366263.79	40.3336935	-104.4126601	0.00	
7823.00†	90.293	88.047	6559.71	1645.02	2631.33	297.86	3303223.91	1366268.42	40.3337028	-104.4123016	0.00	
7923.00†	90.293	88.047	6559.20	1731.63	2634.74	397.80	3303323.79	1366273.06	40.3337122	-104.4119432	0.00	
8023.00†	90.293	88.047	6558.69	1818.24	2638.15	497.74	3303423.68	1366277.69	40.3337215	-104.4115847	0.00	
8123.00†	90.293	88.047	6558.17	1904.85	2641.56	597.68	3303523.57	1366282.32	40.3337309	-104.4112262	0.00	
8223.00†	90.293	88.047	6557.66	1991.45	2644.96	697.62	3303623.45	1366286.95	40.3337402	-104.4108677	0.00	

Planned Wellpath Report

BIGFOOT 11-1-4 PWP Rev-B.0

Page 5 of 8

REFERENCE WELLPATH IDENTIFICATION

Operator	CONFLUENCE RESOURCES	Well	BIGFOOT 11-1-4
Field	WELD COUNTY (NAD83, TRUE NORTH)	API/Legal	
Facility	SEC.11-T04N-R63W	Wellbore	BIGFOOT 11-1-4 PWB
Slot	SLOT#13 BIGFOOT 11-1-4 (2456'FSL & 470'FWL,SEC.11)		

WELLPATH DATA (128 stations) † = interpolated, ‡ = extrapolated station

MD [ft]	Inclination [°]	Azimuth [°]	TVD [ft]	Vert Sect [ft]	North [ft]	East [ft]	Grid East [US ft]	Grid North [US ft]	Latitude	Longitude	DLS [°/100ft]	Comments
8323.00†	90.293	88.047	6557.15	2078.06	2648.37	797.56	3303723.34	1366291.58	40.3337496	-104.4105093	0.00	
8423.00†	90.293	88.047	6556.64	2164.67	2651.78	897.50	3303823.23	1366296.21	40.3337589	-104.4101508	0.00	
8523.00†	90.293	88.047	6556.13	2251.28	2655.18	997.44	3303923.11	1366300.84	40.3337682	-104.4097923	0.00	
8623.00†	90.293	88.047	6555.62	2337.88	2658.59	1097.38	3304023.00	1366305.48	40.3337776	-104.4094338	0.00	
8723.00†	90.293	88.047	6555.11	2424.49	2662.00	1197.32	3304122.89	1366310.11	40.3337869	-104.4090754	0.00	
8823.00†	90.293	88.047	6554.60	2511.10	2665.41	1297.26	3304222.78	1366314.74	40.3337963	-104.4087169	0.00	
8923.00†	90.293	88.047	6554.09	2597.71	2668.81	1397.20	3304322.66	1366319.37	40.3338056	-104.4083584	0.00	
9023.00†	90.293	88.047	6553.58	2684.31	2672.22	1497.15	3304422.55	1366324.00	40.3338149	-104.4079999	0.00	
9123.00†	90.293	88.047	6553.07	2770.92	2675.63	1597.09	3304522.44	1366328.63	40.3338243	-104.4076415	0.00	
9223.00†	90.293	88.047	6552.56	2857.53	2679.04	1697.03	3304622.32	1366333.26	40.3338336	-104.4072830	0.00	
9323.00†	90.293	88.047	6552.04	2944.14	2682.44	1796.97	3304722.21	1366337.90	40.3338429	-104.4069245	0.00	
9423.00†	90.293	88.047	6551.53	3030.74	2685.85	1896.91	3304822.10	1366342.53	40.3338523	-104.4065660	0.00	
9523.00†	90.293	88.047	6551.02	3117.35	2689.26	1996.85	3304921.98	1366347.16	40.3338616	-104.4062076	0.00	
9623.00†	90.293	88.047	6550.51	3203.96	2692.66	2096.79	3305021.87	1366351.79	40.3338709	-104.4058491	0.00	
9723.00†	90.293	88.047	6550.00	3290.57	2696.07	2196.73	3305121.76	1366356.42	40.3338803	-104.4054906	0.00	
9823.00†	90.293	88.047	6549.49	3377.17	2699.48	2296.67	3305221.64	1366361.05	40.3338896	-104.4051321	0.00	
9923.00†	90.293	88.047	6548.98	3463.78	2702.89	2396.61	3305321.53	1366365.68	40.3338989	-104.4047737	0.00	
10023.00†	90.293	88.047	6548.47	3550.39	2706.29	2496.55	3305421.42	1366370.32	40.3339082	-104.4044152	0.00	
10123.00†	90.293	88.047	6547.96	3637.00	2709.70	2596.49	3305521.31	1366374.95	40.3339176	-104.4040567	0.00	
10223.00†	90.293	88.047	6547.45	3723.60	2713.11	2696.43	3305621.19	1366379.58	40.3339269	-104.4036982	0.00	
10323.00†	90.293	88.047	6546.94	3810.21	2716.52	2796.37	3305721.08	1366384.21	40.3339362	-104.4033398	0.00	
10423.00†	90.293	88.047	6546.42	3896.82	2719.92	2896.31	3305820.97	1366388.84	40.3339455	-104.4029813	0.00	
10523.00†	90.293	88.047	6545.91	3983.43	2723.33	2996.25	3305920.85	1366393.47	40.3339549	-104.4026228	0.00	
10623.00†	90.293	88.047	6545.40	4070.03	2726.74	3096.20	3306020.74	1366398.10	40.3339642	-104.4022643	0.00	
10723.00†	90.293	88.047	6544.89	4156.64	2730.14	3196.14	3306120.63	1366402.74	40.3339735	-104.4019058	0.00	
10823.00†	90.293	88.047	6544.38	4243.25	2733.55	3296.08	3306220.51	1366407.37	40.3339828	-104.4015474	0.00	
10923.00†	90.293	88.047	6543.87	4329.86	2736.96	3396.02	3306320.40	1366412.00	40.3339921	-104.4011889	0.00	
11023.00†	90.293	88.047	6543.36	4416.46	2740.37	3495.96	3306420.29	1366416.63	40.3340014	-104.4008304	0.00	
11123.00†	90.293	88.047	6542.85	4503.07	2743.77	3595.90	3306520.18	1366421.26	40.3340108	-104.4004719	0.00	
11223.00†	90.293	88.047	6542.34	4589.68	2747.18	3695.84	3306620.06	1366425.89	40.3340201	-104.4001135	0.00	

Planned Wellpath Report

BIGFOOT 11-1-4 PWP Rev-B.0

Page 6 of 8

REFERENCE WELLPATH IDENTIFICATION

Operator	CONFLUENCE RESOURCES	Well	BIGFOOT 11-1-4
Field	WELD COUNTY (NAD83, TRUE NORTH)	API/Legal	
Facility	SEC.11-T04N-R63W	Wellbore	BIGFOOT 11-1-4 PWB
Slot	SLOT#13 BIGFOOT 11-1-4 (2456'FSL & 470'FWL,SEC.11)		

WELLPATH DATA (128 stations) † = interpolated, ‡ = extrapolated station

MD [ft]	Inclination [°]	Azimuth [°]	TVD [ft]	Vert Sect [ft]	North [ft]	East [ft]	Grid East [US ft]	Grid North [US ft]	Latitude	Longitude	DLS [°/100ft]	Comments
11323.00†	90.293	88.047	6541.83	4676.29	2750.59	3795.78	3306719.95	1366430.53	40.3340294	-104.3997550	0.00	
11423.00†	90.293	88.047	6541.32	4762.89	2754.00	3895.72	3306819.84	1366435.16	40.3340387	-104.3993965	0.00	
11523.00†	90.293	88.047	6540.81	4849.50	2757.40	3995.66	3306919.72	1366439.79	40.3340480	-104.3990380	0.00	
11623.00†	90.293	88.047	6540.29	4936.11	2760.81	4095.60	3307019.61	1366444.42	40.3340573	-104.3986796	0.00	
11723.00†	90.293	88.047	6539.78	5022.72	2764.22	4195.54	3307119.50	1366449.05	40.3340666	-104.3983211	0.00	
11823.00†	90.293	88.047	6539.27	5109.32	2767.62	4295.48	3307219.38	1366453.68	40.3340759	-104.3979626	0.00	
11923.00†	90.293	88.047	6538.76	5195.93	2771.03	4395.42	3307319.27	1366458.31	40.3340852	-104.3976041	0.00	
11974.36	90.293	88.047	6538.50 ²	5240.42	2772.78	4446.76	3307370.58	1366460.69	40.3340900	-104.3974200	0.00	TD

HOLE & CASING SECTIONS

- Ref Wellbore: BIGFOOT 11-1-4 PWB Ref Wellpath: BIGFOOT 11-1-4 PWP Rev-B.0

String/Diameter	Start MD [ft]	End MD [ft]	Interval [ft]	Start TVD [ft]	End TVD [ft]	Start N/S [ft]	Start E/W [ft]	End N/S [ft]	End E/W [ft]
9.625in Casing Surface	23.00	1764.77	1741.77	23.00	1700.00	0.00	0.00	369.08	-97.45



Planned Wellpath Report

BIGFOOT 11-1-4 PWP Rev-B.0

Page 7 of 8



REFERENCE WELLPATH IDENTIFICATION

Operator	CONFLUENCE RESOURCES	Well	BIGFOOT 11-1-4
Field	WELD COUNTY (NAD83, TRUE NORTH)	API/Legal	
Facility	SEC.11-T04N-R63W	Wellbore	BIGFOOT 11-1-4 PWB
Slot	SLOT#13 BIGFOOT 11-1-4 (2456'FSL & 470'FWL,SEC.11)		

TARGETS

Name	MD [ft]	TVD [ft]	North [ft]	East [ft]	Grid East [US ft]	Grid North [US ft]	Latitude	Longitude	Shape
SEC.11-T04N-R63W	N/A	-2.50	0.00	150.57	3303108.87	1363635.60	40.3264800	-104.4128300	polygon
2D Polygon: dimensions not calculated									
SEC.11-T04N-R63W E/W 470' SETBACK	N/A	-2.50	0.00	150.57	3303108.87	1363635.60	40.3264800	-104.4128300	polygon
2D Polygon: dimensions not calculated									
2) BIGFOOT 11-1-4 BHL REV-1 (150'FNL & 470'FEL,SEC.11)	11974.36	6538.50	2772.78	4446.76	3307370.58	1366460.69	40.3340900	-104.3974200	point
1) BIGFOOT 11-1-4 LP REV-1 (150'FNL & 470'FWL,SEC.11)	7471.96	6561.50	2619.37	-52.97	3302873.27	1366252.17	40.3336700	-104.4135600	point

SURVEY PROGRAM - Ref Wellbore: BIGFOOT 11-1-4 PWB Ref Wellpath: BIGFOOT 11-1-4 PWP Rev-B.0

Start MD [ft]	End MD [ft]	Positional Uncertainty Model	Log Name/Comment	Wellbore
23.00	1764.77	BH NaviTrak (2019) (Standard)		BIGFOOT 11-1-4 PWB
1764.77	11974.36	BH AutoTrak Curve/eXpress (2019) (Short spacing)		BIGFOOT 11-1-4 PWB



Planned Wellpath Report

BIGFOOT 11-1-4 PWP Rev-B.0

Page 8 of 8



REFERENCE WELLPATH IDENTIFICATION

Operator	CONFLUENCE RESOURCES	Well	BIGFOOT 11-1-4
Field	WELD COUNTY (NAD83, TRUE NORTH)	API/Legal	
Facility	SEC.11-T04N-R63W	Wellbore	BIGFOOT 11-1-4 PWB
Slot	SLOT#13 BIGFOOT 11-1-4 (2456'FSL & 470'FWL,SEC.11)		

DESIGN COMMENTS

MD [ft]	Inclination [°]	Azimuth [°]	TVD [ft]	Comment
23.00	0.000	345.210	23.00	Tie On
250.00	0.000	345.210	250.00	End of Tangent
1517.65	25.353	345.210	1476.69	End of Build (J)
1764.77	25.353	345.210	1700.00	End of Tangent (J)
1864.77	25.353	345.210	1790.37	End of Tangent
6514.71	25.353	345.210	5992.46	KOP
7471.96	90.293	88.047	6561.50	LANDING
11974.36	90.293	88.047	6538.50	TD



Closest Approach Clearance Summary Report

BIGFOOT 11-1-4 PWP Rev-B.0 - SPE WPTS Stop
Drilling HSE Risk (2017)
Page 1 of 3



REFERENCE WELLPATH IDENTIFICATION			
Operator	CONFLUENCE RESOURCES	Well	BIGFOOT 11-1-4
Field	WELD COUNTY (NAD83, TRUE NORTH)	API/Legal	
Facility	SEC.11-T04N-R63W	Wellbore	BIGFOOT 11-1-4 PWB
Slot	SLOT#13 BIGFOOT 11-1-4 (2456'FSL & 470'FWL,SEC.11)		

REPORT SETUP INFORMATION			
Projection System	NAD83 / Lambert Colorado SP, Northern Zone (501), US feet	Software System	WellArchitect® 6.0
North Reference	True	User	Painsetr
Scale	0.999958	Report Generated	4/26/2022 at 3:18:23 PM
Convergence at slot	0.70° East	Database	WellArchitectDB

WELLPATH LOCATION						
	Local coordinates		Grid coordinates		Geographic coordinates	
	North[ft]	East[ft]	Easting[US ft]	Northing[US ft]	Latitude	Longitude
Slot Location	0.00	-150.57	3302958.33	1363633.76	40.3264800°	-104.4133700°
Facility Reference Pt			3303108.87	1363635.60	40.3264800°	-104.4128300°
Field Reference Pt			3230456.90	1245096.09	40.0032400°	-104.6773400°

WELLPATH DATUM			
Calculation method	Minimum Curvature	Rig (23') (KB) to Facility Vertical Datum	4639.00ft
Horizontal Reference Pt	Slot	Rig (23') (KB) to Mean Sea Level	4639.00ft
Vertical Reference Pt	Rig (23') (KB)	Rig (23') (KB) to Ground Level at Slot (SLOT#13 BIGFOOT 11-1-4 (2456'FSL & 470'FWL,SEC.11))	23.00ft
MD Reference Pt	Rig (23') (KB)		
Field Vertical Reference	Mean Sea Level		

POSITIONAL UNCERTAINTY CALCULATION SETTINGS					
Ellipse Confidence Limit	3.50 Std Dev	Ellipse Start MD	23.00ft	Surface Position Uncertainty	included
Declination	7.76° East of TN	Dip Angle	66.72°	Mag Field Strength	51850 nT
Slot Surface Uncertainty @1SD		Horizontal	0.100ft	Vertical	1.000ft
Facility Surface Uncertainty @1SD		Horizontal	8.200ft	Vertical	3.000ft
Positional Uncertainty values in the WELLPATH DATA table are the projection of the ellipsoid of uncertainty onto the vertical and horizontal planes					



Closest Approach Clearance Summary Report

BIGFOOT 11-1-4 PWP Rev-B.0 - SPE WPTS Stop
Drilling HSE Risk (2017)
Page 2 of 3



REFERENCE WELLPATH IDENTIFICATION			
Operator	CONFLUENCE RESOURCES	Well	BIGFOOT 11-1-4
Field	WELD COUNTY (NAD83, TRUE NORTH)	API/Legal	
Facility	SEC.11-T04N-R63W	Wellbore	BIGFOOT 11-1-4 PWB
Slot	SLOT#13 BIGFOOT 11-1-4 (2456'FSL & 470'FWL,SEC.11)		

PROXIMITY-SCAN RULE			
Rule Name	SPE WPTS Stop Drilling HSE Risk (2017)	Rule Based On	Ratio
Plane of Rule	Closest Approach	Threshold Value	1.00
Include Casing & Hole Size	yes	Apply Cone of Safety	no

HOLE & CASING SECTIONS									
- Ref Wellbore: BIGFOOT 11-1-4 PWB Ref Wellpath: BIGFOOT 11-1-4 PWP Rev-B.0									
String/Diameter	Start MD [ft]	End MD [ft]	Interval [ft]	Start TVD [ft]	End TVD [ft]	Start N/S [ft]	Start E/W [ft]	End N/S [ft]	End E/W [ft]
9.625in Casing Surface	23.00	1764.77	1741.77	23.00	1700.00	0.00	0.00	369.08	-97.45

SURVEY PROGRAM - Ref Wellbore: BIGFOOT 11-1-4 PWB Ref Wellpath: BIGFOOT 11-1-4 PWP Rev-B.0				
Start MD [ft]	End MD [ft]	Positional Uncertainty Model	Log Name/Comment	Wellbore
23.00	1764.77	BH NaviTrak (2019) (Standard)		BIGFOOT 11-1-4 PWB
1764.77	11974.36	BH AutoTrak Curve/eXpress (2019) (Short spacing)		BIGFOOT 11-1-4 PWB



Closest Approach Clearance Summary Report

**BIGFOOT 11-1-4 PWP Rev-B.0 - SPE WPTS Stop
Drilling HSE Risk (2017)**
Page 3 of 3



REFERENCE WELLPATH IDENTIFICATION			
Operator	CONFLUENCE RESOURCES	Well	BIGFOOT 11-1-4
Field	WELD COUNTY (NAD83, TRUE NORTH)	API/Legal	
Facility	SEC.11-T04N-R63W	Wellbore	BIGFOOT 11-1-4 PWB
Slot	SLOT#13 BIGFOOT 11-1-4 (2456'FSL & 470'FWL,SEC.11)		

CALCULATION RANGE & CUTOFF		
From: 23.00ft MD	To: 11974.36ft MD	C-C Cutoff: (none)

OFFSET WELL CLEARANCE SUMMARY (17 Offset Wellpaths selected) Ratios are calculated in Closest Approach plane												
Offset Facility	Offset Slot	Offset Well	Offset Wellbore	Offset Wellpath	Wellbore Status	C-C Clearance Distance			Rule Separation Ratio			
						Ref MD [ft]	Min C-C Clear Dist [ft]	Diverging from MD [ft]	Ref MD of Min Ratio [ft]	Min Ratio	Min Ratio Dvrg from [ft]	Rule Status
SEC.10-T04N-R63W	SLOT#01 70 RANCH 10-11-1 (2345'FNL & 514'FEL, SEC.10)	70 RANCH 10-11-1	70 RANCH 10-11-1 AWB	70 RANCH 10-11-1 AWP	Drilling	6348.03	194.44	11623.00	11966.59	1.23	11966.59	PASS
SEC.10-T04N-R63W	SLOT#02 70 RANCH 10-11-2 (2360'FNL & 514'FEL, SEC.10)	70 RANCH 10-11-2	70 RANCH 10-11-2 AWB	70 RANCH 10-11-2 AWP	Drilling	4841.11	556.26	11223.00	11974.36	2.19	11974.36	PASS
SEC.11-T04N-R63W	SLOT#14 BIGFOOT 11-2-4 (2431'FSL & 470'FWL,SEC.11)	BIGFOOT 11-2-4	BIGFOOT 11-2-4 PWB	BIGFOOT 11-2-4 PWP Rev-B.0	Planned	23.00	25.50	11923.00	11965.63	2.79	11965.63	PASS
SEC.11-T04N-R63W	SLOT#15 BIGFOOT 11-3-2 (2406'FSL & 470'FWL,SEC.11)	BIGFOOT 11-3-2	BIGFOOT 11-3-2 PWB	BIGFOOT 11-3-2 PWP Rev-B.0	Planned	23.00	51.00	11923.00	11974.36	3.44	11974.36	PASS
SEC.11-T04N-R63W	SLOT#16 BIGFOOT 11-4-3 (2381'FSL & 470'FWL,SEC.11)	BIGFOOT 11-4-3	BIGFOOT 11-4-3 PWB	BIGFOOT 11-4-3 PWP Rev-B.0	Planned	23.00	76.50	11823.00	11974.36	4.20	11974.36	PASS
SEC.11-T04N-R63W	SLOT#17 BIGFOOT 11-5-1 (2356'FSL & 470'FWL,SEC.11)	BIGFOOT 11-5-1	BIGFOOT 11-5-1 PWB	BIGFOOT 11-5-1 PWP Rev-B.0	Planned	23.00	102.01	11823.00	11974.36	5.02	11974.36	PASS
SEC.11-T04N-R63W	SLOT#18 BIGFOOT 11-3-4 (2331'FSL & 470'FWL,SEC.11)	BIGFOOT 11-3-4	BIGFOOT 11-3-4 PWB	BIGFOOT 11-3-4 PWP Rev-B.0	Planned	23.00	127.54	11823.00	11974.36	5.36	11974.36	PASS
SEC.11-T04N-R63W	SLOT#19 BIGFOOT 11-6-2 (2306'FSL & 470'FWL,SEC.11)	BIGFOOT 11-6-2	BIGFOOT 11-6-2 PWB	BIGFOOT 11-6-2 PWP Rev-B.0	Planned	23.00	153.03	11823.00	11974.36	6.00	11974.36	PASS
SEC.11-T04N-R63W	SLOT#20 BIGFOOT 11-7-3 (2281'FSL & 470'FWL,SEC.11)	BIGFOOT 11-7-3	BIGFOOT 11-7-3 PWB	BIGFOOT 11-7-3 PWP Rev-B.0	Planned	23.00	174.89	250.00	11974.36	6.78	11974.36	PASS
SEC.11-T04N-R63W	SLOT#01 BIGFOOT 11-8-1 (2455'FSL & 620'FWL,SEC.11)	BIGFOOT 11-8-1	BIGFOOT 11-8-1 PWB	BIGFOOT 11-8-1 PWP Rev-B.0	Planned	23.00	150.57	250.00	11974.36	7.63	11974.36	PASS
SEC.11-T04N-R63W	SLOT#02 BIGFOOT 11-4-4 (2430'FSL & 620'FWL,SEC.11)	BIGFOOT 11-4-4	BIGFOOT 11-4-4 PWB	BIGFOOT 11-4-4 PWP Rev-B.0	Planned	23.00	152.71	250.00	11974.36	7.96	11974.36	PASS
SEC.11-T04N-R63W	SLOT#03 BIGFOOT 11-9-2 (2405'FSL & 620'FWL,SEC.11)	BIGFOOT 11-9-2	BIGFOOT 11-9-2 PWB	BIGFOOT 11-9-2 PWP Rev-B.0	Planned	23.00	157.84	250.00	11974.36	8.59	11974.36	PASS
SEC.11-T04N-R63W	SLOT#04 BIGFOOT 11-10-3 (2380'FSL & 620'FWL,SEC.11)	BIGFOOT 11-10-3	BIGFOOT 11-10-3 PWB	BIGFOOT 11-10-3 PWP Rev-B.0	Planned	23.00	167.27	250.00	11974.36	9.37	11974.36	PASS
SEC.11-T04N-R63W	SLOT#05 BIGFOOT 11-11-1 (2355'FSL & 620'FWL,SEC.11)	BIGFOOT 11-11-1	BIGFOOT 11-11-1 PWB	BIGFOOT 11-11-1 PWP Rev-B.0	Planned	23.00	179.85	250.00	11974.36	10.24	11974.36	PASS
SEC.11-T04N-R63W	SLOT#06 BIGFOOT 11-5-4 (2330'FSL & 620'FWL,SEC.11)	BIGFOOT 11-5-4	BIGFOOT 11-5-4 PWB	BIGFOOT 11-5-4 PWP Rev-B.0	Planned	23.00	194.97	250.00	11974.36	10.56	11974.36	PASS

OFFSET WELL CLEARANCE SUMMARY (17 Offset Wellpaths selected) Ratios are calculated in Closest Approach plane												
Offset Facility	Offset Slot	Offset Well	Offset Wellbore	Offset Wellpath	Wellbore Status	C-C Clearance Distance			Rule Separation Ratio			
						Ref MD [ft]	Min C-C Clear Dist [ft]	Diverging from MD [ft]	Ref MD of Min Ratio [ft]	Min Ratio	Min Ratio Dvrg from [ft]	Rule Status
SEC.11-T04N-R63W	SLOT#07 BIGFOOT 11-12-2 (2305'FSL & 620'FWL,SEC.11)	BIGFOOT 11-12-2	BIGFOOT 11-12-2 PWB	BIGFOOT 11-12-2 PWP Rev-B.0	Planned	23.00	214.07	250.00	11974.36	11.19	11974.36	PASS
SEC.11-T04N-R63W	SLOT#08 BIGFOOT 11-13-3 (2280'FSL & 620'FWL,SEC.11)	BIGFOOT 11-13-3	BIGFOOT 11-13-3 PWB	BIGFOOT 11-13-3 PWP Rev-B.0	Planned	23.00	232.59	250.00	11974.36	11.99	11974.36	PASS