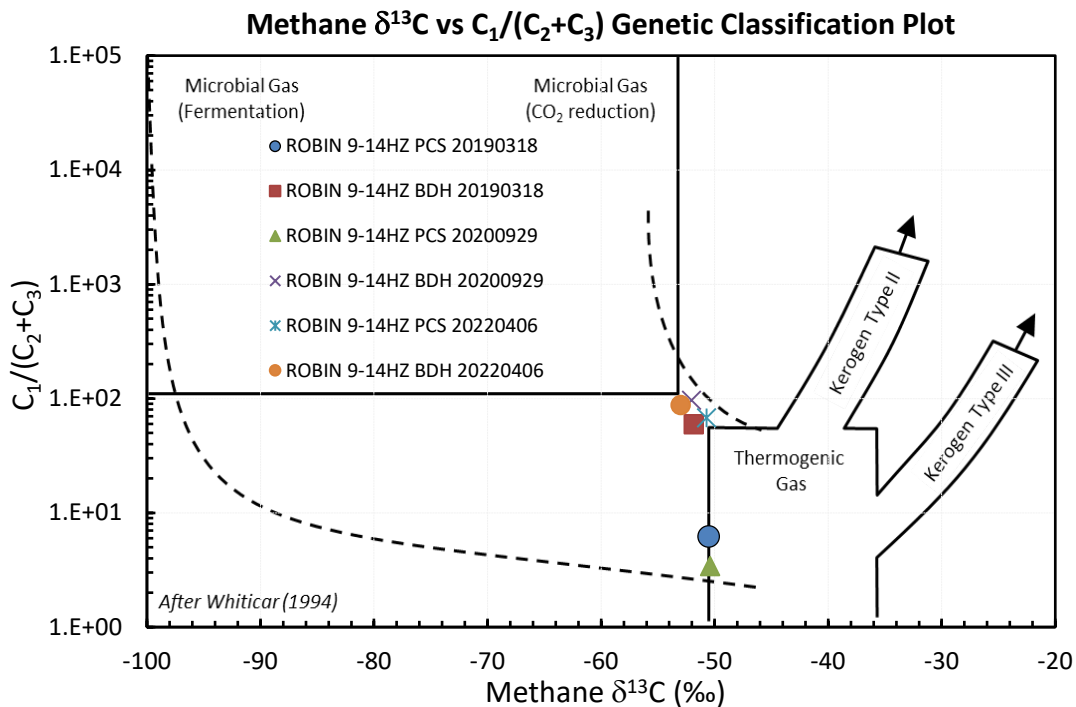
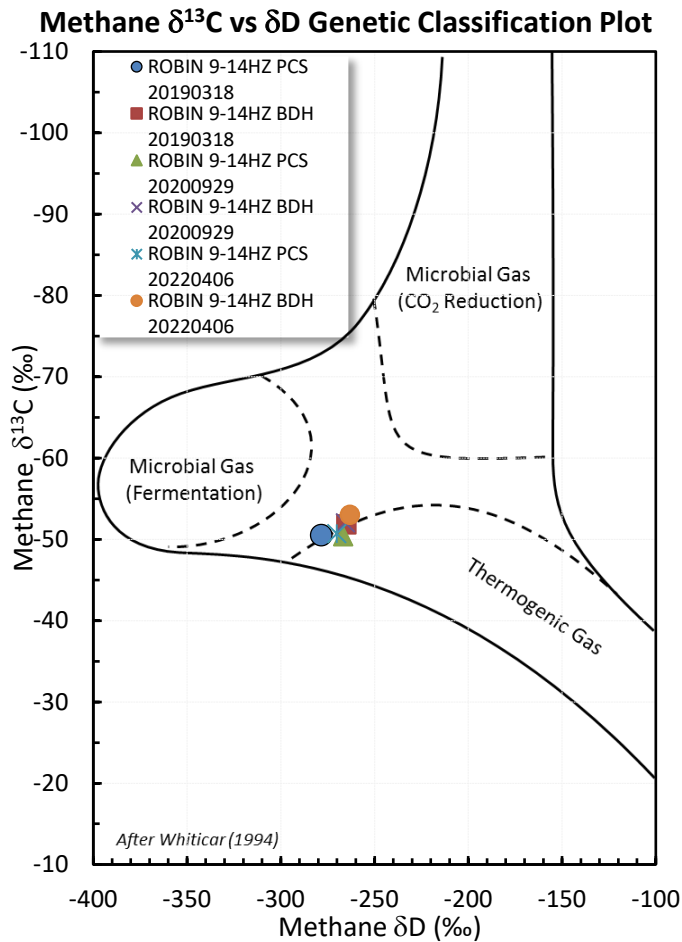
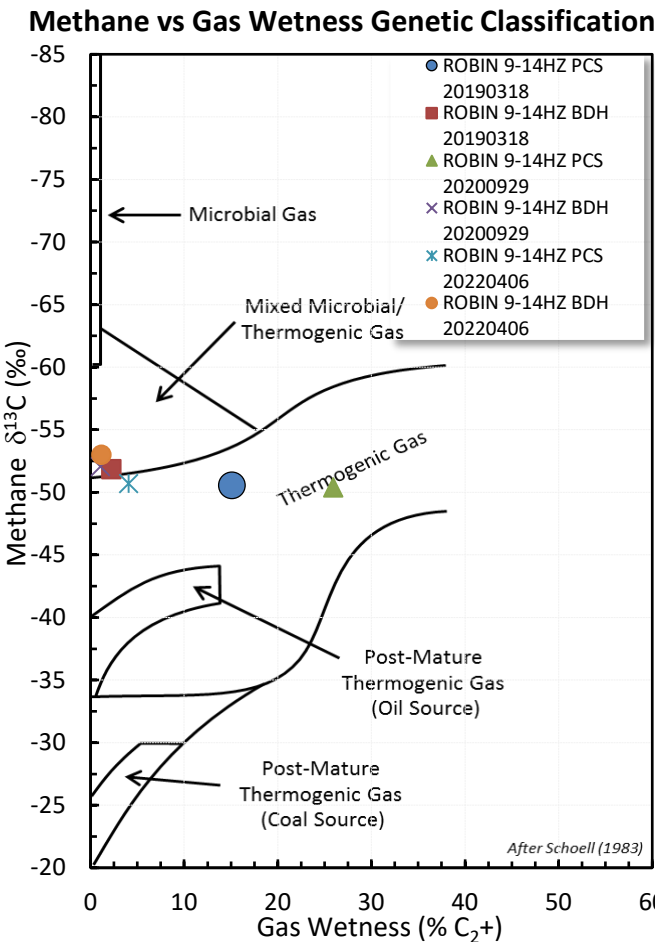
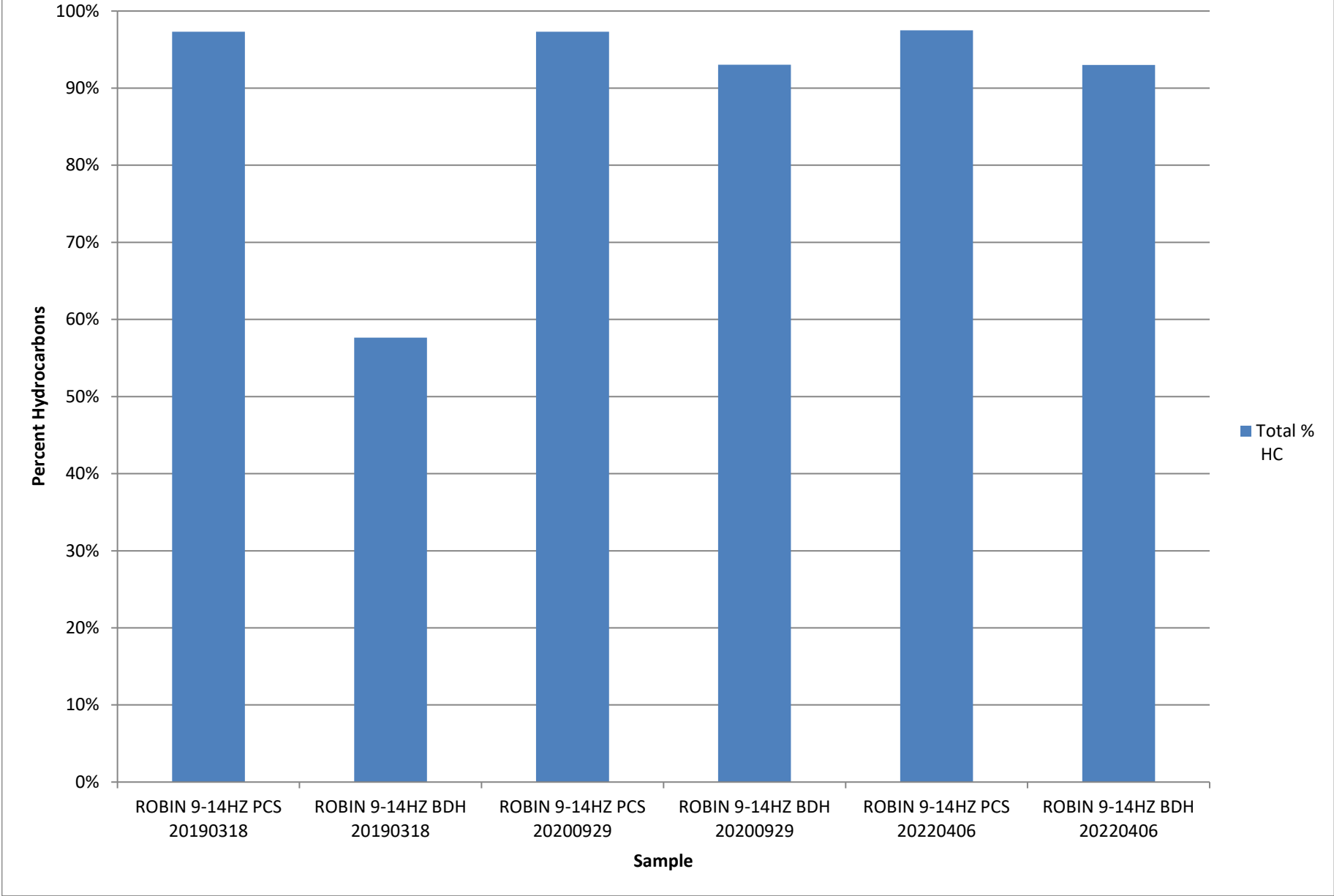


# Stable Isotope Interpretive Plots



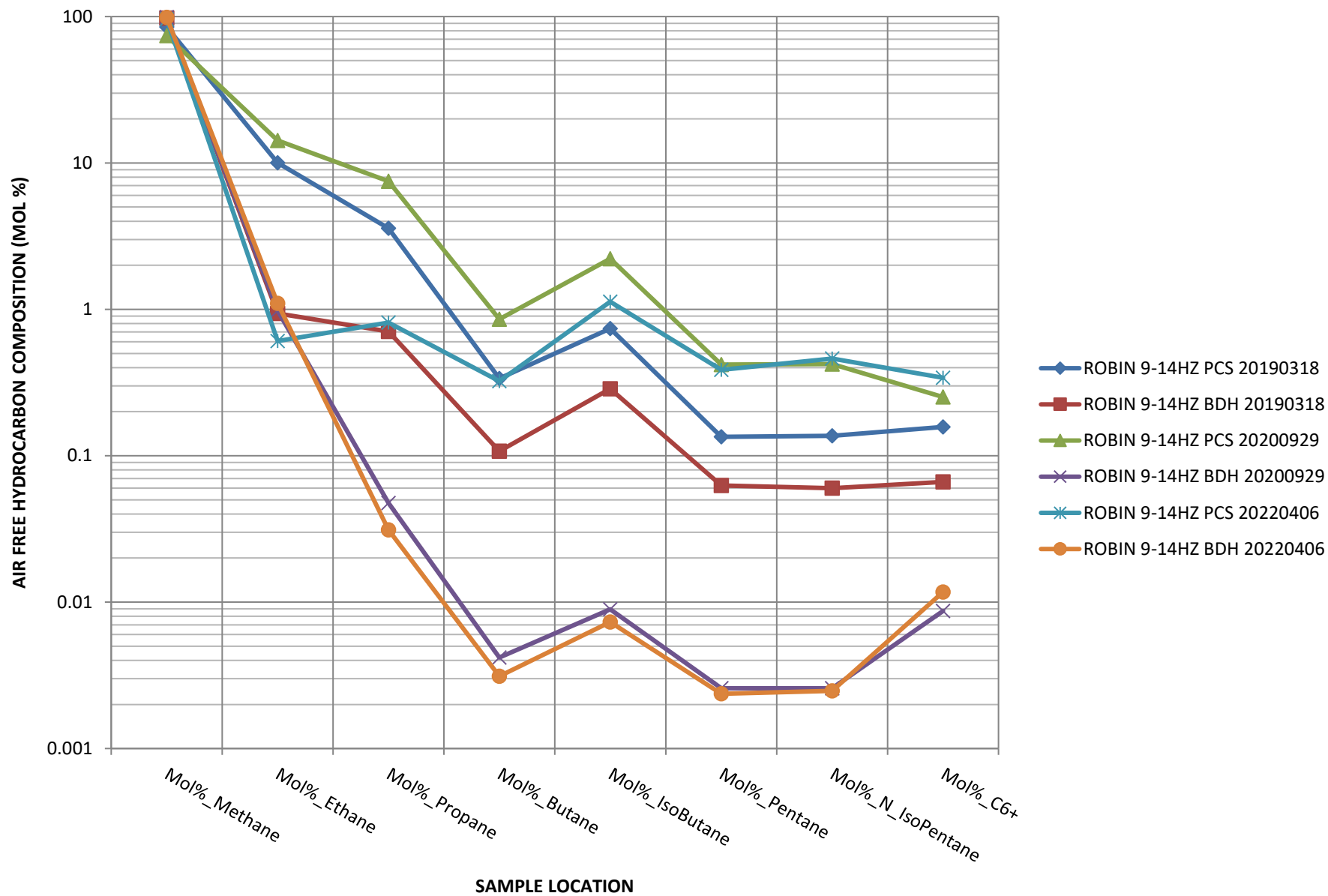
Total Percent Hydrocarbons

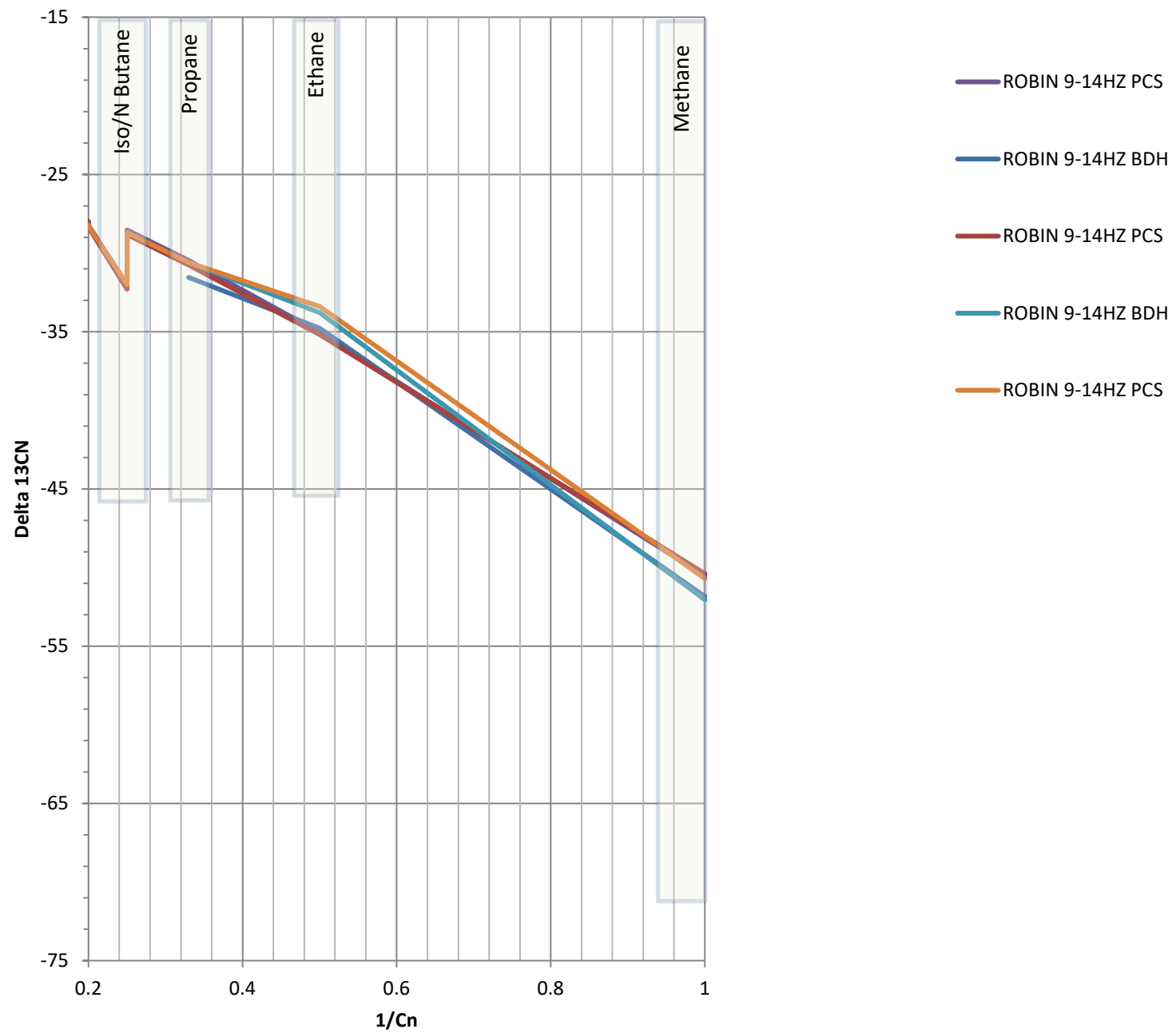


Parameter	ROBIN 9-14HZ PCS 20190318	ROBIN 9-14HZ BDH 20190318	ROBIN 9-14HZ PCS 20200929	ROBIN 9-14HZ BDH 20200929	ROBIN 9-14HZ PCS 20220406	ROBIN 9-14HZ BDH 20220406
Mol%_Nitrogen	1.5	30	0.7	3.5	0.9	4.0
Mol%_Oxygen	0.01	8.0	0.02	0.05	0.01	0.015
Mol%_Argon	0.01	0.4	0.01	0.025	0.01	0.025
Mol%_O2+AR	0.7	0.04	2.0	0.01	1.8	0.01
Mol%_CarbonDiOxide	0.015	0.018	0.012	0.05	0.015	0.06
Mol%_CarbonMonoxide	0.6	1.8	0.01	4.0	0.01	3.5
Mol%_hydrogen	80	55	70	95	90	95
Mol%_Methane	10	0.55	15	0.9	0.6	1.0
Mol%_Ethane	4.0	0.45	7.0	0.05	0.8	0.03
Mol%_Propane	0.35	0.065	0.85	0.01	0.3	0.01
Mol%_Butane	0.7	0.18	2.2	0.01	1.1	0.01
Mol%_IsoButane	0.13	0.04	0.45	0.01	0.4	0.01
Mol%_N_Pentane	0.14	0.04	0.45	0.01	0.48	0.01
Mol%_IsoPentane	0.16	0.045	0.25	0.01	0.35	0.01
Mol%_C6+	0.01	0.01	0.01	0.01	0.01	0.01

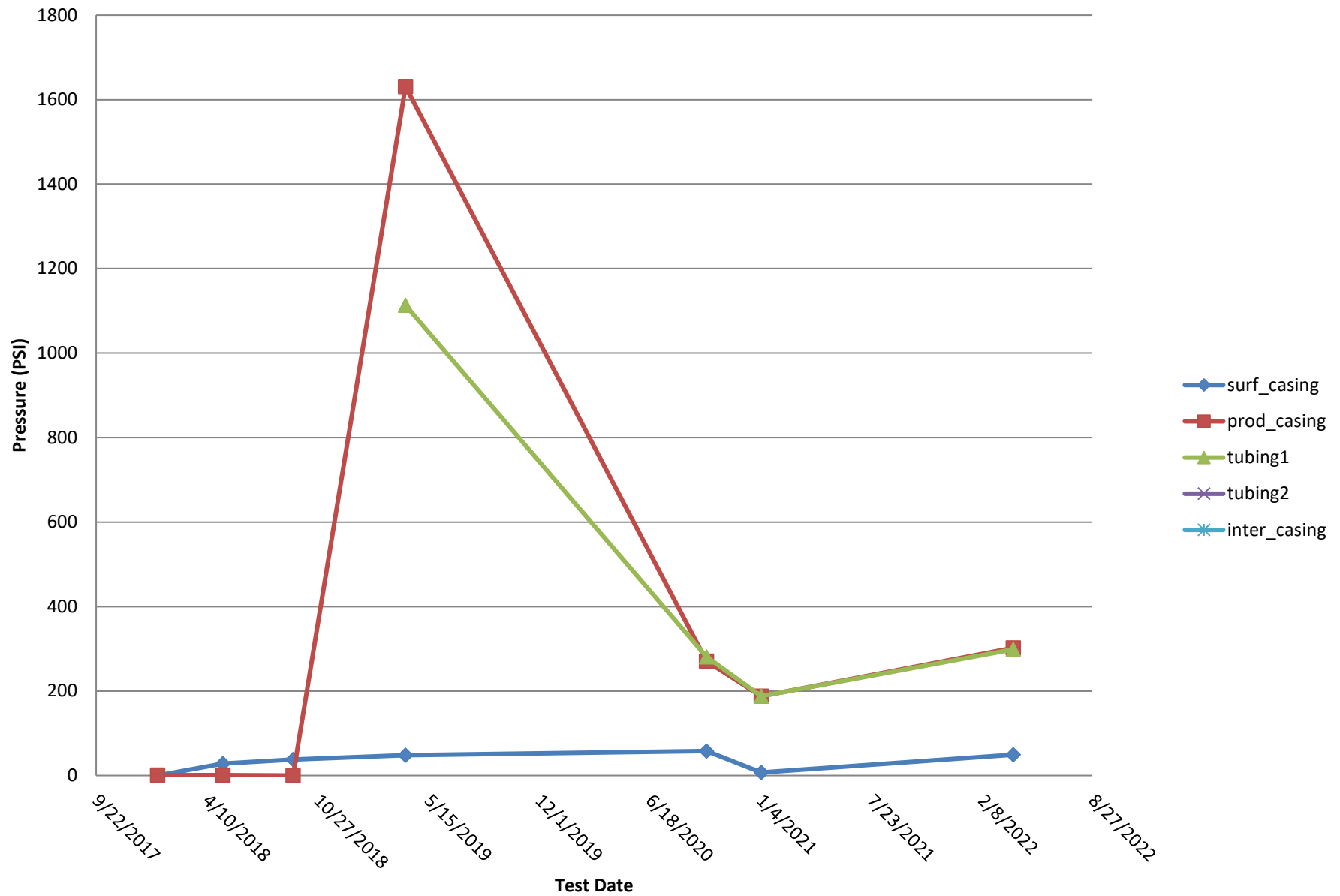
- ROBIN 9-14HZ PCS 20190318
- ROBIN 9-14HZ BDH 20190318
- ROBIN 9-14HZ PCS 20200929
- ROBIN 9-14HZ BDH 20200929
- ROBIN 9-14HZ PCS 20220406
- ROBIN 9-14HZ BDH 20220406

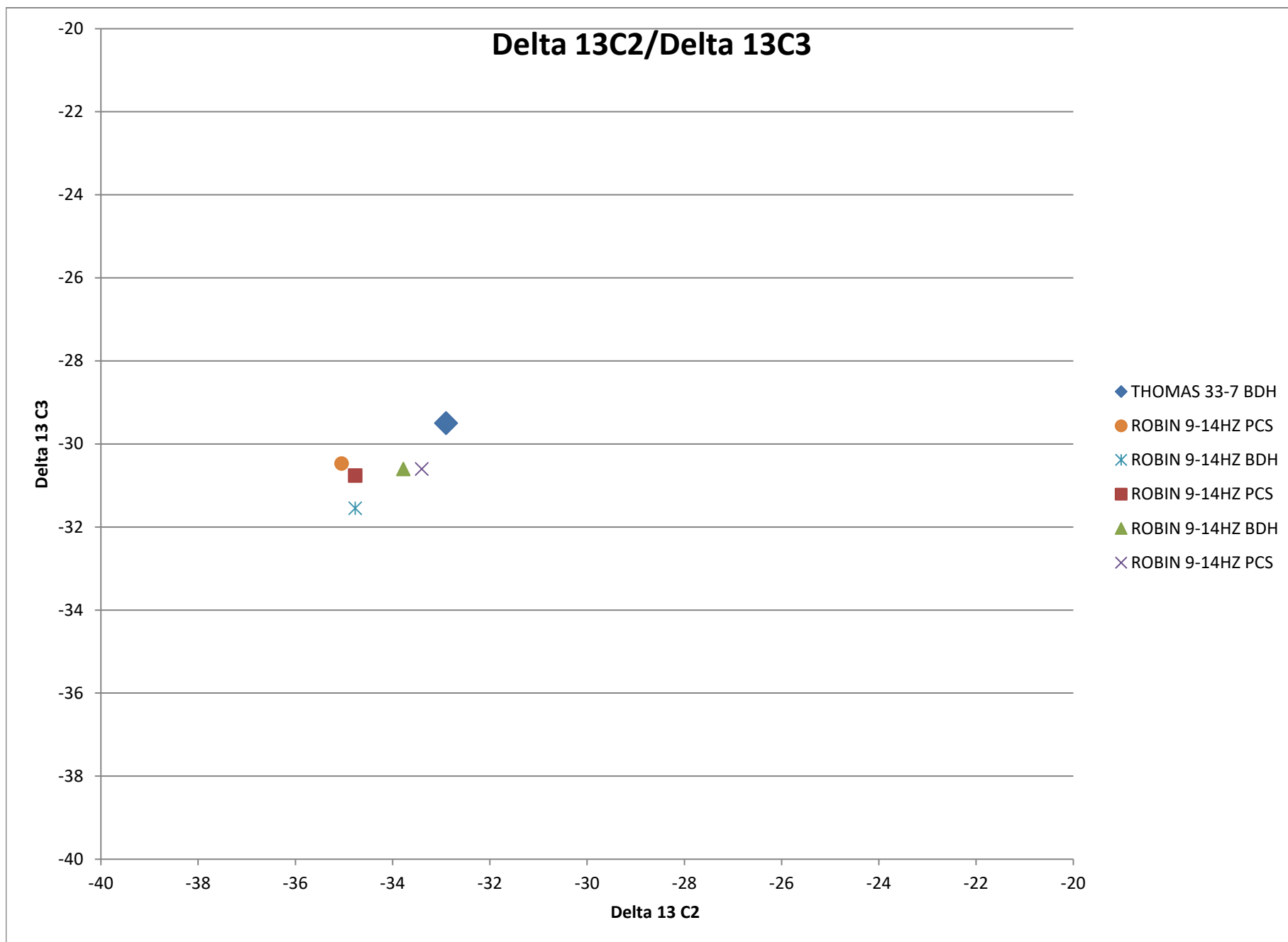
## HYDROCARBON COMPOSITION



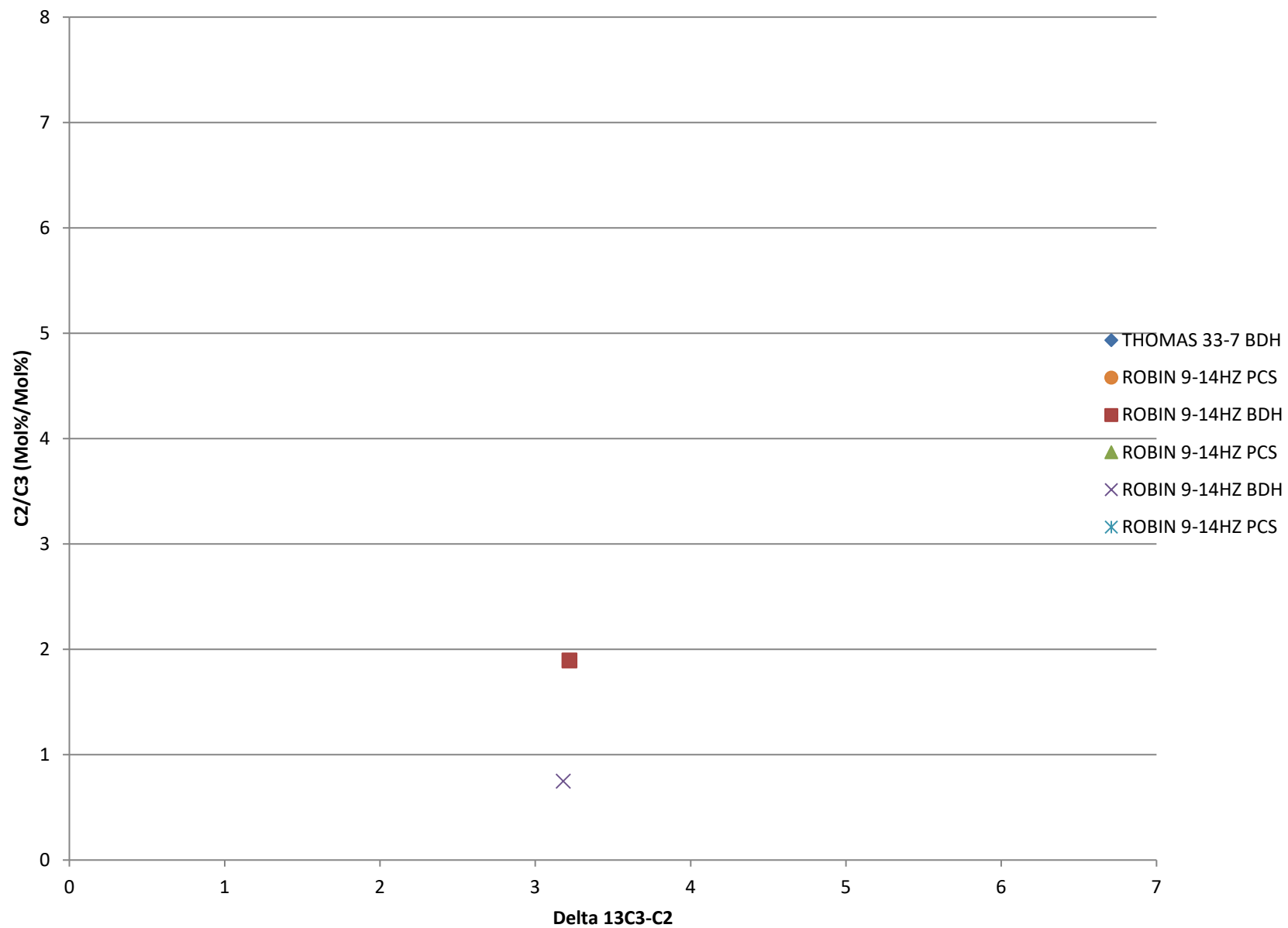


## Bradenhead Test Summary





## Delta13 C2/C3 vs. Delta 13C3-C2





## Delta 13 IC4/ Delta NC4

