



Service Order #: 416322

Date: 4/19/2022

Well Name:	Location:	County:	St:	API#	
USA 2-36		WELD	CO		
Formation:	Cement Via:	Type Of Service:	Well Type/Age:	AFE#:	PO#:
	TUBING	SQUEEZE	REWORK		

Customer: OXY

Customer Rep: R.BISHOP

PH:

Remarks: SUSSEX AGM, 1.17 YIELD, 5.05 GAL/SK, 15.8 LBS/GAL  
110 SKS, 22.9 BBLS, @3620'-3530' ETOC CASING  
21.5 BBLS THROUGH PERFS

TEMP-74.1°F, PH-7, CHLORIDES- 0PPM

## WELLBORE DATA

Type	Size	Weight	Depth	Volume
Surface Casing:				
Production Casing:	4.5	11.6		0
Intermediate:	0	0	0.0	0
Drill Pipe:	0	0	0.0	0
Tubing:	2.375	4.7	3,590.0	

Type	Size	Depth (Top)	Depth (Bot)	Volume
Liner:				0
Open Hole:	7.9			

## OTHER DATA

BHT	Max PSI	Total Depth
	2,140	3,620

Packer or Retainer Type/Depth:

RETAINER	3,590
----------	-------

Perf Depths: # TotalPerf

3,620.0	0	
	0	
	0	

TIME	PUMP RATES		DENSITY (lb/gal)	PRESS (psi)	STG TOT (bbbls)	TOTAL (bbbls)	REMARKS
	WATER (gpm)	PUMP (bpm)					
15:37	0	0.0	7.91	3517	39.0	70.1	PSI TEST
15:38	0	0.0	7.91	0	0.0	0.0	H2O INJECTION TEST
15:41	0	1.7	15.78	1879	5.0	5.0	START CEMENT
15:52	0	2.5	13.59	1315	23.2	28.2	END CEMENT START DISPLACEMENT
15:57	0	0.0	7.91	1216	12.8	41.2	OFFLINE

## Summary

Max Fl. Rate	Avg Fl. Rate	Max Psi	Avg Psi
2.5	3.6	3,529	1,530

Customer Acknowledgement:

Service Rating:

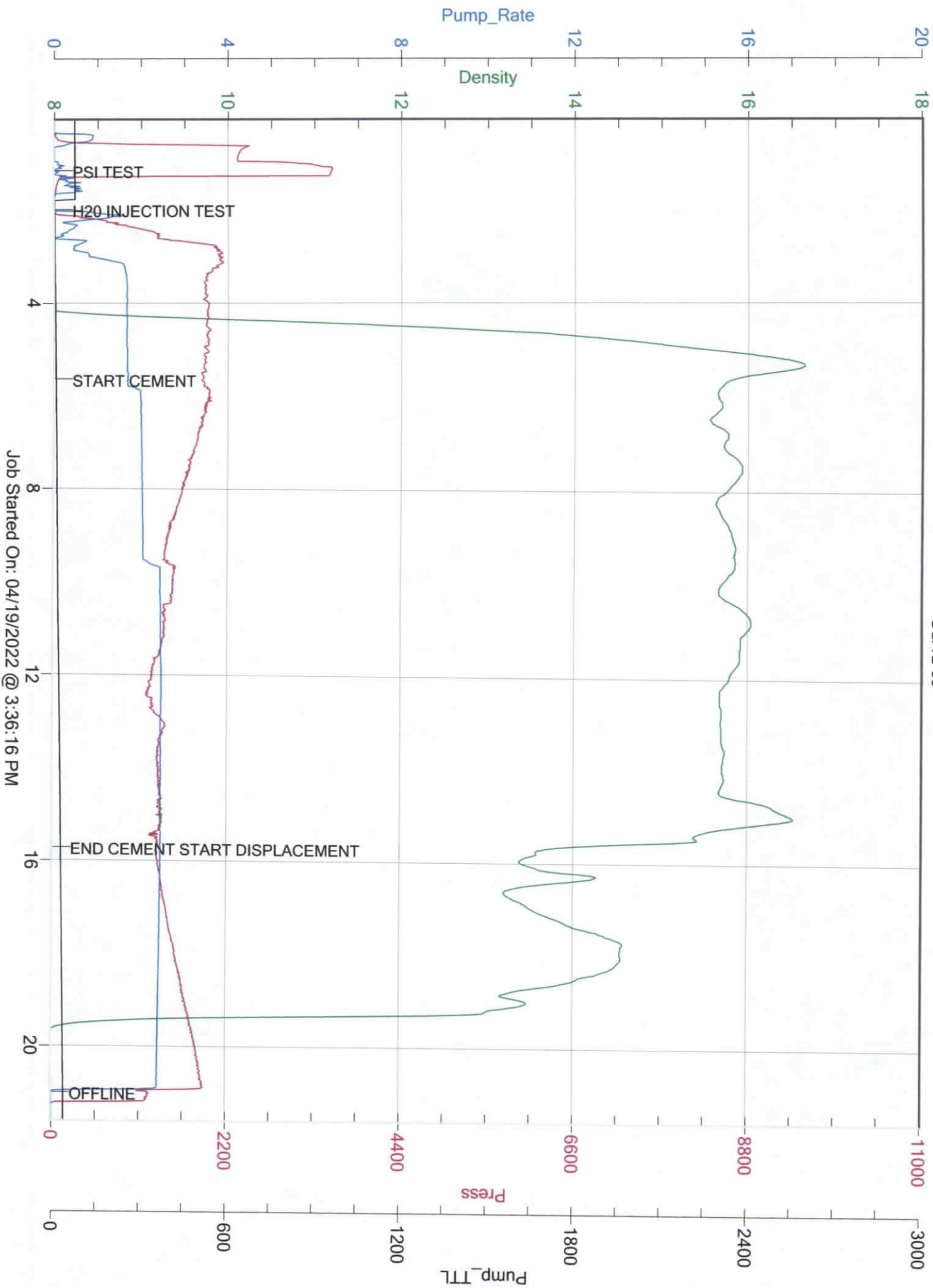
- ☐ Satisfactory  
☐ Unsatisfactory

Cementer:

A.HOWELL

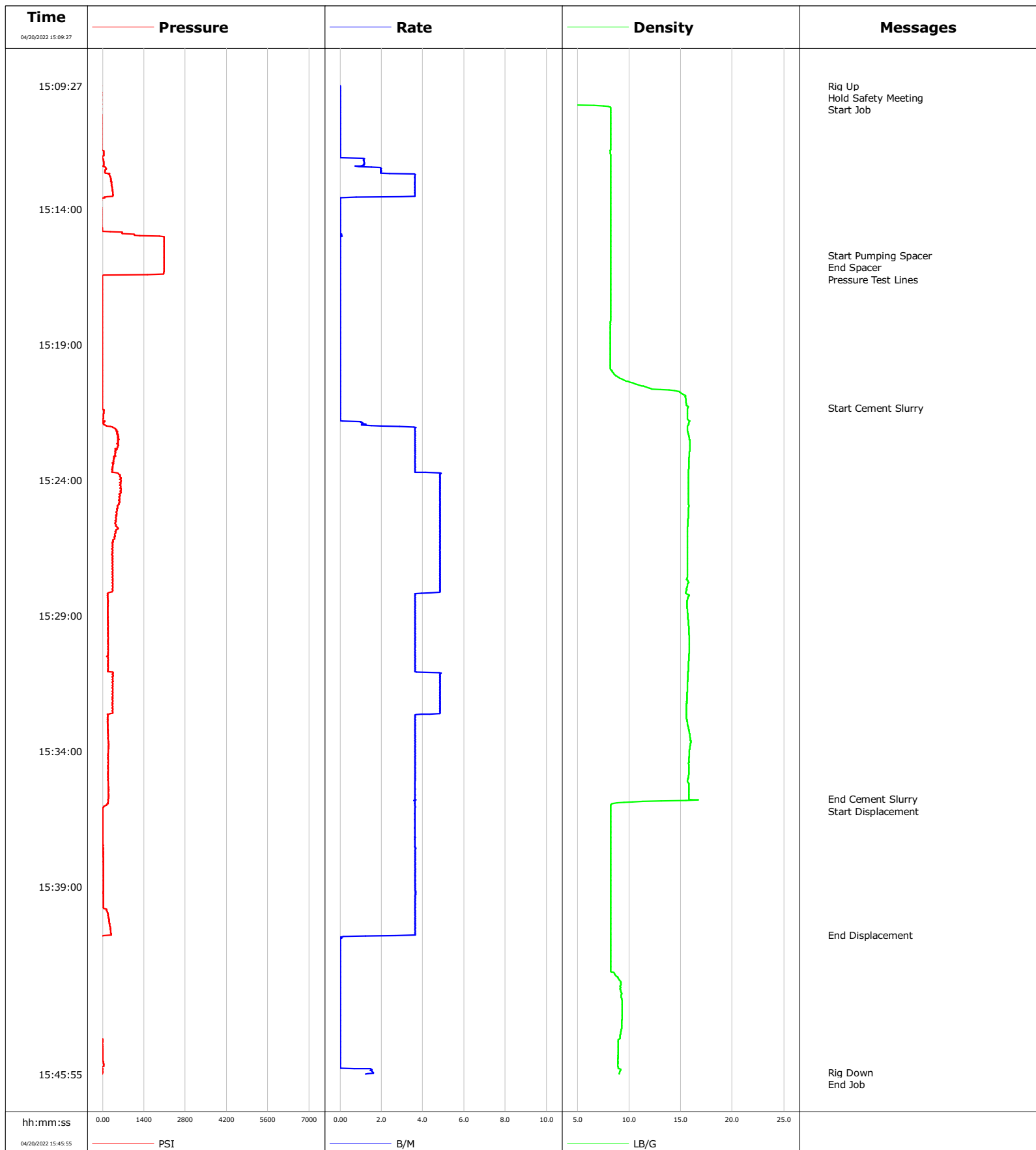
## PRODUCTS USED

CLASS G CMT, 2% GYPSUM, .4% LATEX, .3% DISPERSANT, .25% FLUID LOSS



**Well** USA 2-36  
**Field** DJ  
**Engineer** Justin Zika  
**Country** United States

**Client** Oxy  
**SIR No.** EOIC-00015  
**Job Type** Sqz  
**Job Date** 04-20-2022



# Cementing Service Report

				Customer Oxy				Job Number EOIC-00015			
Well USA 2-36			Location (legal)			Schlumberger Location			Job Start Apr/20/2022		
Field DJ		Formation Name/Type		Deviation deg		Bit Size in		Well MD ft		Well TVD ft	
County Weld		State/Province Colorado		BHP psi		BHST degF		BHCT degF		Pore Press. Gradient lb/gal	
Well Master		API/UWI									
Rig Name Axis 711		Drilled For Oil		Service Via Land		Casing/Liner					
						Depth, ft		Size, in		Weight, lb/ft	
Offshore Zone		Well Class Old		Well Type Workover		2400.0		4.5		11.6	
						0.0		0.0		0.0	
Drilling Fluid Type		Max. Density lb/gal		Plastic Viscosity cP		Tubing/Drill Pipe					
						T/D		Depth, ft		Size, in	
Service Line Cementing		Job Type Sqz									
Max. Allowed Tub. Press psi		Max. Allowed Ann. Press psi		WH Connection 2 3/8" 4.7# T/S		Perforations/Open Hole					
						Top, ft		Bottom, ft		shot/ft	
						ft		ft			
						ft		ft			
						ft		ft			
						Treat Down Casing		Displacement 21.7 bbl		Packer Type	
										Packer Depth ft	
						Tubing Vol. bbl		Casing Vol. bbl		Annular Vol. bbl	
										Openhole Vol. bbl	
Casing/Tubing Secured <input checked="" type="checkbox"/>		1 Hole Vol. Circulated prior to Cement <input checked="" type="checkbox"/>				Casing Tools				Squeeze Job	
Lift Pressure psi						Shoe Type				Squeeze Type	
Pipe Rotated <input type="checkbox"/>		Pipe Reciprocated <input type="checkbox"/>				Shoe Depth ft				Tool Type	
No. Centralizers		Top Plugs		Bottom Plugs		Stage Tool Type				Tool Depth ft	
Cement Head Type						Stage Tool Depth ft				Tail Pipe Size in	
Job Scheduled For Apr/20/2022		Arrived on Location Apr/20/2022		Leave Location Apr/20/2022		Collar Type				Tail Pipe Depth ft	
						Collar Depth ft				Sqz. Total Vol. bbl	
Date	Time 24-hr clock	Treating Pressure PSI	Flow Rate B/M	Density LB/G	Volume BBL	Message					
04/20/2022	15:09:27	-38	0.0	0.29	0.0	Started Acquisition					
04/20/2022	15:09:28	-33	0.0	0.29	0.0	Rig Up					
04/20/2022	15:09:29	-38	0.0	0.29	0.0	Hold Safety Meeting					
04/20/2022	15:09:30	-38	0.0	0.29	0.0	Start Job					
04/20/2022	15:14:27	-19	0.0	8.24	3.9						
04/20/2022	15:15:43	2082	0.0	8.24	3.9	Start Pumping Spacer					
04/20/2022	15:15:45	2082	0.0	8.24	3.9	End Spacer					
04/20/2022	15:15:48	2082	0.0	8.24	3.9	Pressure Test Lines					
04/20/2022	15:19:27	-15	0.0	8.18	3.9						
04/20/2022	15:21:20	-15	0.0	15.68	3.9	Start Cement Slurry					
04/20/2022	15:24:27	631	4.9	15.72	13.8						
04/20/2022	15:29:27	187	3.6	15.78	36.5						
04/20/2022	15:34:27	191	3.7	15.74	56.6						
04/20/2022	15:35:46	191	3.6	15.79	61.4	End Cement Slurry					
04/20/2022	15:35:47	200	3.6	15.78	61.4	Start Displacement					
04/20/2022	15:39:27	17	3.7	8.24	74.8						
04/20/2022	15:40:48	297	3.7	8.24	79.7	End Displacement					
04/20/2022	15:44:27	-38	0.0	9.17	79.8						
04/20/2022	15:45:51	8	1.6	9.09	80.0	Rig Down					

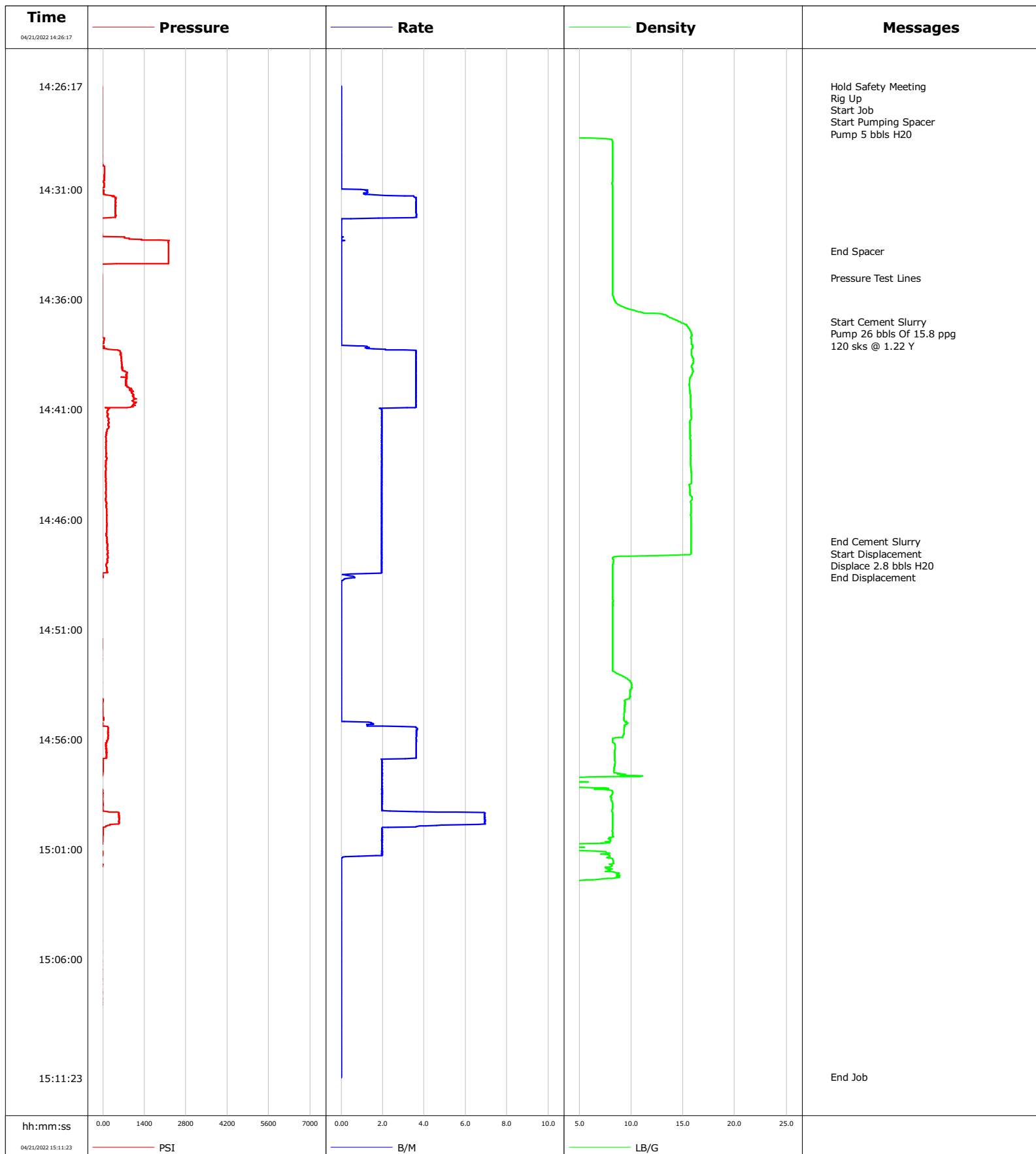
<b>Well</b>	<b>Field</b>	<b>Job Start</b>	<b>Customer</b>	<b>Job Number</b>
USA 2-36	DJ	Apr/20/2022	Oxy	EOIC-00015

Post Job Summary

Average Pump Rates, bbl/min					Volume of Fluid Injected, bbl				
Slurry 3.8	N2	Mud	Maximum Rate 4.9		Total Slurry 67.0	Mud 0.0	Spacer 5.0	N2	
Treating Pressure Summary, psi					Breakdown Fluid				
Maximum 2091	Final 0	Average 345	Bump Plug to	Breakdown	Type		Volume bbl		Density lb/gal
Avg. N2 Percent %		Designed Slurry Volume 67.0 bbl	Displacement 21.7 bbl	Mix Water Temp 68 degF	Cement Circulated to Surface? <input type="checkbox"/>			Volume bbl	
					Washed Thru Perfs <input type="checkbox"/>			To ft	
Customer or Authorized Representative Ray Bishop			Schlumberger Supervisor Justin Zika			Circulation Lost <input type="checkbox"/>		Job Completed <input checked="" type="checkbox"/>	
						-		-	

**Well** USA 2-36  
**Field** DJ  
**Engineer** Justin Zika  
**Country** United States

**Client** OXY  
**SIR No.**  
**Job Type** Shoe Plug  
**Job Date** 04-21-2022



# Cementing Service Report

				Customer OXY			Job Number		
Well USA 2-36			Location (legal)		Schlumberger Location			Job Start Apr/21/2022	
Field DJ		Formation Name/Type		Deviation deg	Bit Size in		Well MD ft		
County Weld		State/Province Colorado		BHP psi	BHST degF		BHCT degF		
Well Master		API/UWI						Pore Press. Gradient lb/gal	
Rig Name	Drilled For Oil	Service Via Land	Casing/Liner						
			Depth, ft	Size, in	Weight, lb/ft	Grade		Thread	
Offshore Zone	Well Class Old	Well Type Workover							
Drilling Fluid Type		Max. Density lb/gal	Plastic Viscosity cP	Tubing/Drill Pipe					
				T/D	Depth, ft	Size, in	Weight, lb/ft	Grade	
Service Line Cementing	Job Type Shoe Plug								
Max. Allowed Tub. Press psi	Max. Allowed Ann. Press psi	WH Connection 2 3/8" 4.7# T/S	Perforations/Open Hole						
			Top, ft	Bottom, ft	shot/ft	No. of Shots		Total Interval	
			ft	ft				ft	
			ft	ft				Diameter	
			ft	ft				in	
			Treat Down Tubing	Displacement 2.8 bbl	Packer Type	Packer Depth ft			
			Tubing Vol. bbl	Casing Vol. bbl	Annular Vol. bbl	Openhole Vol. bbl			
Casing/Tubing Secured <input checked="" type="checkbox"/>			1 Hole Vol. Circulated prior to Cement <input checked="" type="checkbox"/>			Casing Tools		Squeeze Job	
Lift Pressure psi			Shoe Type			Squeeze Type			
Pipe Rotated <input type="checkbox"/>			Pipe Reciprocated <input type="checkbox"/>			Shoe Depth ft		Tool Type	
No. Centralizers		Top Plugs	Bottom Plugs	Stage Tool Type		Tool Depth ft			
Cement Head Type			Stage Tool Depth ft		Tail Pipe Size in				
Job Scheduled For Apr/21/2022		Arrived on Location Apr/21/2022		Leave Location Apr/21/2022		Collar Type		Tail Pipe Depth ft	
						Collar Depth ft		Sqz. Total Vol. bbl	
Date	Time 24-hr clock	Treating Pressure PSI	Flow Rate B/M	Density LB/G	Volume BBL	Message			
04/21/2022	14:26:17	-33	0.0	0.24	0.0	Started Acquisition			
04/21/2022	14:26:18	-33	0.0	0.24	0.0	Start Job			
04/21/2022	14:26:19	-33	0.0	0.24	0.0	Start Pumping Spacer			
04/21/2022	14:26:21	-33	0.0	0.24	0.0	Pump 5 bbls H2O			
04/21/2022	14:31:17	379	3.1	8.22	0.4				
04/21/2022	14:33:47	2219	0.0	8.22	4.1	End Spacer			
04/21/2022	14:35:00	-33	0.0	8.24	4.1	Pressure Test Lines			
04/21/2022	14:36:17	-28	0.0	8.96	4.1				
04/21/2022	14:37:00	-24	0.0	14.61	4.1	Start Cement Slurry			
04/21/2022	14:41:17	159	2.0	15.79	14.6				
04/21/2022	14:46:17	136	1.9	15.78	24.4				
04/21/2022	14:47:00	136	1.9	15.80	25.8	End Cement Slurry			
04/21/2022	14:48:00	132	2.0	8.26	27.7	End Displacement			
04/21/2022	14:51:17	-38	0.0	8.23	28.7				
04/21/2022	14:56:17	118	3.6	8.48	32.2				
04/21/2022	15:01:17	-5	2.0	7.96	46.2				
04/21/2022	15:06:17	-38	0.0	0.27	46.2				
04/21/2022	15:11:17	-3750	0.0	-6.25	46.2				

<b>Well</b>	<b>Field</b>	<b>Job Start</b>	<b>Customer</b>	<b>Job Number</b>
USA 2-36	DJ	Apr/21/2022	OXY	

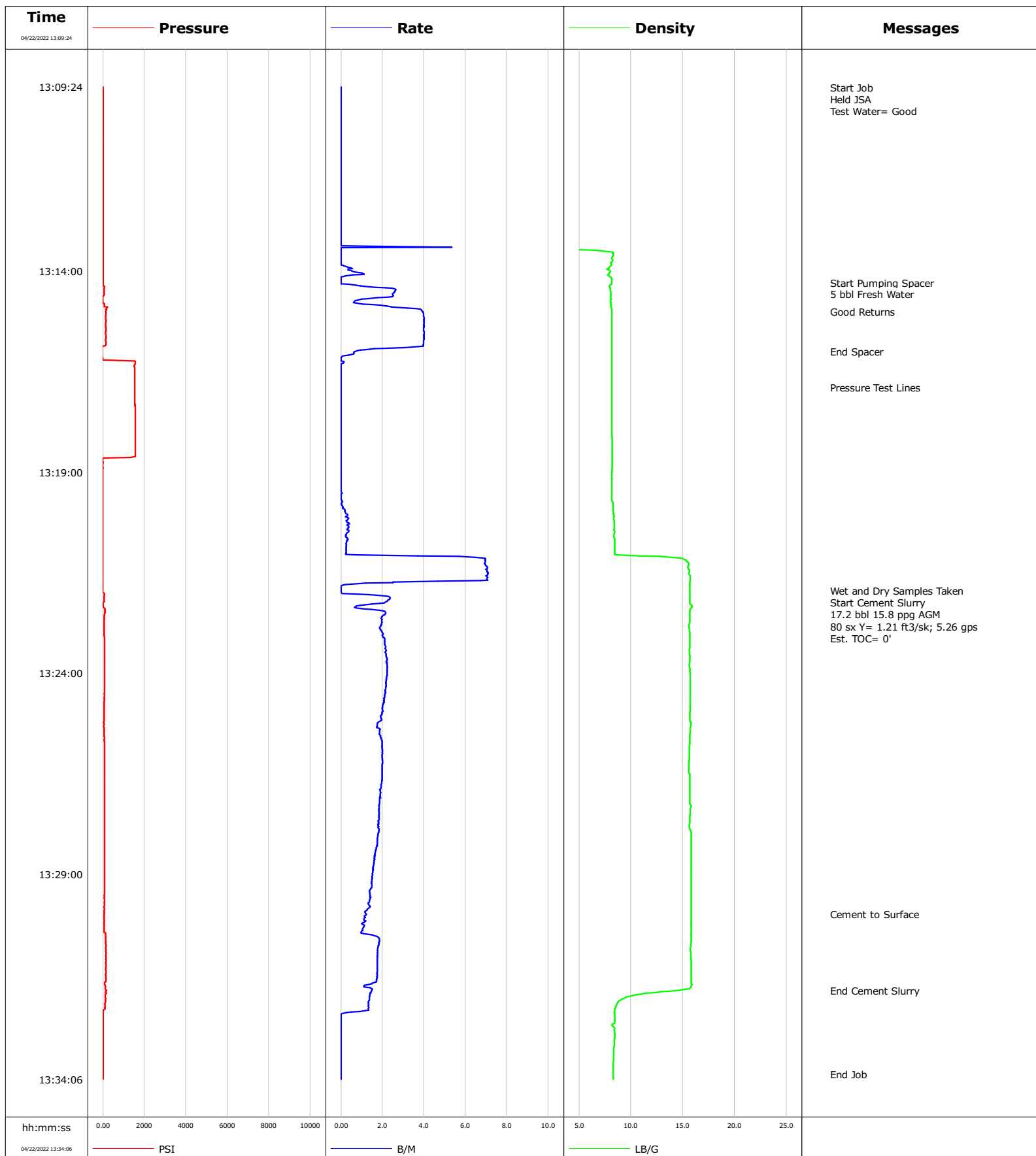
Post Job Summary

Average Pump Rates, bbl/min					Volume of Fluid Injected, bbl				
Slurry 2.5	N2	Mud	Maximum Rate 7.0		Total Slurry 26.0	Mud 0.0	Spacer 5.0	N2	
Treating Pressure Summary, psi					Breakdown Fluid				
Maximum 2228	Final -3750	Average 381	Bump Plug to	Breakdown	Type		Volume bbl		Density lb/gal
Avg. N2 Percent %		Designed Slurry Volume 26.0 bbl	Displacement 2.8 bbl	Mix Water Temp 68 degF	Cement Circulated to Surface? <input type="checkbox"/>			Volume bbl	
					Washed Thru Perfs <input type="checkbox"/>			To ft	
Customer or Authorized Representative Raymond Bishop			Schlumberger Supervisor Justin Zika			Circulation Lost <input type="checkbox"/>		Job Completed <input checked="" type="checkbox"/>	
						-		-	



**Well** USA  
**Field** Wattenberg  
**Engineer** Ken Sovereign  
**Country** United States

**Client** Occidental  
**SIR No.** EOIC-00031  
**Job Type** Plug and Abandon  
**Job Date** 04-22-2022



				Customer Occidental			Job Number EOIC-00031								
Well USA 2-36			Location (legal)			Schlumberger Location Cheyenne Remedial			Job Start Apr/22/2022						
Field Wattenberg		Formation Name/Type			Deviation deg		Bit Size in		Well MD 260.0 ft		Well TVD 260.0 ft				
County Weld		State/Province CO			BHP psi		BHST degF		BHCT degF		Pore Press. Gradient lb/gal				
Well Master 64897687		API/UWI 05-123-25256													
Rig Name Axis 711		Drilled For Oil		Service Via Land		Casing/Liner									
						Depth, ft		Size, in		Weight, lb/ft		Grade	Thread		
Offshore Zone		Well Class Old		Well Type Workover		260.0		8.6		24.0					
						0.0		0.0		0.0					
Drilling Fluid Type		Max. Density lb/gal		Plastic Viscosity cP		Tubing/Drill Pipe									
						T/D		Depth, ft		Size, in		Weight, lb/ft		Grade	Thread
Service Line Cementing		Job Type Plug and Abandon				T		260.0		2.4		4.7			
								0.0		0.0		0.0			
Max. Allowed Tub. Press psi		Max. Allowed Ann. Press psi		WH Connection 2 3/8" 4.7# T/S		Perforations/Open Hole									
						Top, ft		Bottom, ft		shot/ft		No. of Shots		Total Interval ft	
Service Instructions Pressure Test: 1600 psi Estimated BOC = 260' ; Estimated TOC = 0' Cement Type Density = 15.8 ppq Mid AGM Volume = 17.2 bbl; Sacks = 80 sx Yield = 1.21 ft <sup>3</sup> /sk; 5.26 gps Water: Temp 65, Cl <100, pH 7 D907Cement94.00 lb/sk BWOB B547GASBLOK0.40% BWOB D053Extender4.00% BWOB S001Accelerator2.00% BWOB						ft		ft							
						ft		ft						Diameter in	
						ft		ft							
						Treat Down Tubing		Displacement 0.5 bbl		Packer Type		Packer Depth ft			
						Tubing Vol. 1.0 bbl		Casing Vol. 16.6 bbl		Annular Vol. bbl		Openhole Vol. bbl			
Casing/Tubing Secured <input checked="" type="checkbox"/>		1 Hole Vol. Circulated prior to Cement <input checked="" type="checkbox"/>				Casing Tools				Squeeze Job					
Lift Pressure psi						Shoe Type				Squeeze Type					
Pipe Rotated <input type="checkbox"/>		Pipe Reciprocated <input type="checkbox"/>				Shoe Depth ft				Tool Type					
No. Centralizers		Top Plugs		Bottom Plugs		Stage Tool Type				Tool Depth ft					
Cement Head Type						Stage Tool Depth ft				Tail Pipe Size in					
Job Scheduled For Apr/22/2022		Arrived on Location Apr/22/2022		Leave Location Apr/22/2022		Collar Type				Tail Pipe Depth ft					
						Collar Depth ft				Sqz. Total Vol. bbl					
Date	Time 24-hr clock	Treating Pressure PSI	Flow Rate B/M	Density LB/G	Volume BBL	Message									
04/22/2022	13:09:24	0	0.0	0.10	0.0	Started Acquisition									
04/22/2022	13:09:26	0	0.0	0.10	0.0	Start Job									
04/22/2022	13:09:28	0	0.0	0.10	0.0	Held JSA									
04/22/2022	13:14:17	0	0.0	8.15	0.3	Start Pumping Spacer									
04/22/2022	13:14:24	73	1.7	7.98	0.3										
04/22/2022	13:15:00	142	3.9	8.15	1.6	Good Returns									
04/22/2022	13:16:00	-37	0.7	8.18	5.4	End Spacer									
04/22/2022	13:16:53	1538	0.0	8.18	5.4	Pressure Test Lines									
04/22/2022	13:19:24	-5	0.0	8.17	5.4										
04/22/2022	13:21:57	-5	0.0	15.69	5.5	Wet and Dry Samples Taken									
04/22/2022	13:22:00	-5	0.0	15.69	5.5	Start Cement Slurry									
04/22/2022	13:24:24	78	2.2	15.72	10.3										
04/22/2022	13:29:24	78	1.4	15.84	19.5										
04/22/2022	13:30:00	55	1.2	15.83	20.3	Cement to Surface									
04/22/2022	13:31:54	174	1.5	14.35	23.2	End Cement Slurry									

<b>Well</b> USA 2-36	<b>Field</b> Wattenberg	<b>Job Start</b> Apr/22/2022	<b>Customer</b> Occidental	<b>Job Number</b> EOIC-00031
-------------------------	----------------------------	---------------------------------	-------------------------------	---------------------------------

Post Job Summary

Average Pump Rates, bbl/min					Volume of Fluid Injected, bbl						
Slurry 1.9	N2		Mud	Maximum Rate 4.1	Total Slurry 17.2	Mud 0.0		Spacer 5.0	N2		
Treating Pressure Summary, psi					Breakdown Fluid						
Maximum 1566	Final 0	Average 317	Bump Plug to	Breakdown	Type		Volume bbl		Density lb/gal		
Avg. N2 Percent %		Designed Slurry Volume 17.2 bbl		Displacement 0.5 bbl		Mix Water Temp 65 degF		Cement Circulated to Surface?	<input checked="" type="checkbox"/>	Volume bbl	
								Washed Thru Perfs		<input type="checkbox"/>	To ft
Customer or Authorized Representative Ray Bishop				Schlumberger Supervisor Ken Sovereign				Circulation Lost	<input type="checkbox"/>	Job Completed	<input checked="" type="checkbox"/>
								-		-	