

VERDAD RESOURCES

WATTENBERG FIELD

9N-60W-25 PEGGY 2525 PAD

PEGGY 2525-02H

Plan B

Plan: Design #2

Standard Planning Report

17 May, 2022

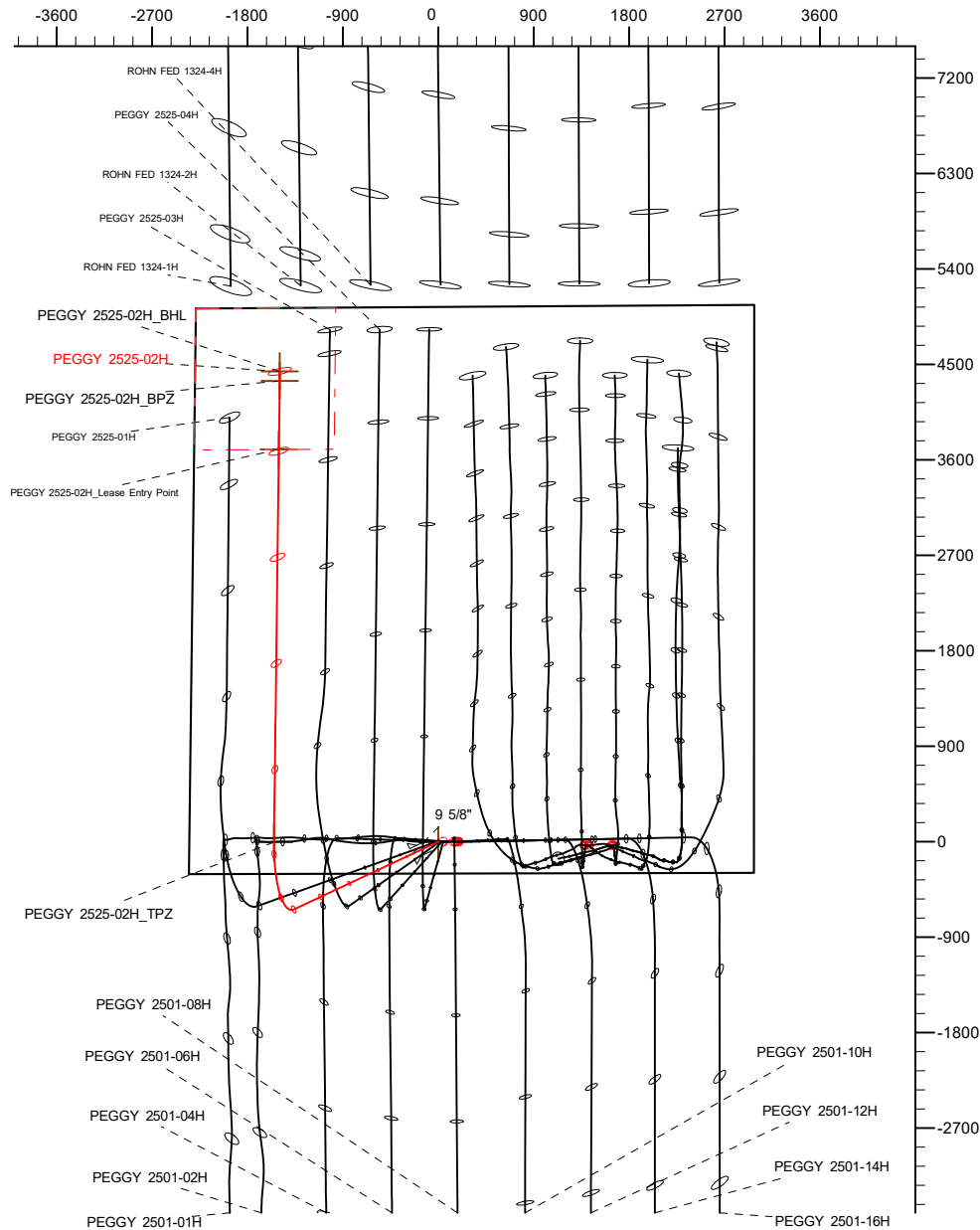
Project: WATTENBERG FIELD
Site: 9N-60W-25 PEGGY 2525 PAD
Well: PEGGY 2525-02H
Wellbore: Plan B
Design: Design #2

VERDAD RESOURCES

CASING DETAILS

TVD	MD	Name	Size
1575.00	1609.82	9 5/8"	9-5/8

West(-)/East(+) (1800 usft/in)



SECTION DETAILS

Sec	MD	Inc	Azi	TVD	+N/-S	+E/-W	Dleg	TFace	VSect	Target
1	0.00	0.00	0.00	0.00	0.00	0.00	0.00	0.00	0.00	
2	269.75	0.00	0.00	269.75	0.00	0.00	0.00	0.00	0.00	
3	1139.75	17.40	244.91	1126.44	-55.59	-118.72	2.00	244.91	-57.06	
4	5730.95	17.40	244.91	5507.55	-637.78	-1362.13	0.00	0.00	-654.61	
5	6814.05	90.00	0.71	6200.00	-4.19	-1549.63	9.00	114.77	-23.40	
6	11253.21	90.00	0.71	6200.00	4434.63	-1494.41	0.00	0.00	4415.77	PEGGY 2525-02H_BHL

WELLBORE TARGET DETAILS (LAT/LONG)

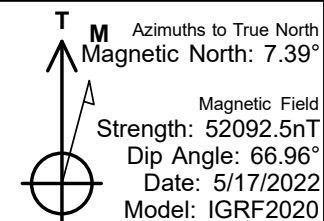
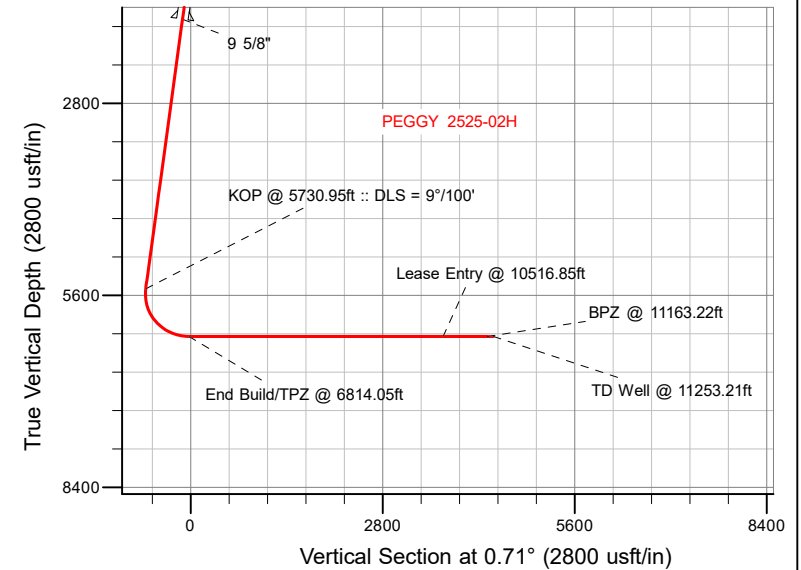
Name	MD	TVD	+N/-S	+E/-W	Latitude	Longitude
PEGGY 2525-02H_SHL	0.00	0.00	0.00	0.00	40.714776	-104.041075
PEGGY 2525-02H_TPZ	6814.05	6200.00	-4.19	-1549.63	40.714764	-104.046665
PEGGY 2525-02H_Lease Entry Point	10516.85	6200.00	3698.32	-1503.56	40.724927	-104.046500
PEGGY 2525-02H_BPZ	11163.22	6200.00	4344.64	-1495.54	40.726701	-104.046471
PEGGY 2525-02H_BHL	11253.21	6200.00	4434.63	-1494.41	40.726948	-104.046467

SHL
301' FSL
2347' FWL

TPZ
300' FSL
798' FWL

BPZ
688' FNL
798' FWL

BHL
598' FNL
798' FWL



WELL DETAILS: PEGGY 2525-02H

GL = 4894'
RKB = 20' @ 4914.00usft (RIG)
Plan: Design #2 (PEGGY 2525-02H/Plan B)
Date: 5/17/2022

Planning Report

Database:	EDM 5000.16 Single User Db	Local Co-ordinate Reference:	Well PEGGY 2525-02H
Company:	VERDAD RESOURCES	TVD Reference:	RKB = 20' @ 4914.00usft (RIG)
Project:	WATTENBERG FIELD	MD Reference:	RKB = 20' @ 4914.00usft (RIG)
Site:	9N-60W-25 PEGGY 2525 PAD	North Reference:	True
Well:	PEGGY 2525-02H	Survey Calculation Method:	Minimum Curvature
Wellbore:	Plan B		
Design:	Design #2		

Project	WATTENBERG FIELD		
Map System:	US State Plane 1983	System Datum:	Mean Sea Level
Geo Datum:	North American Datum 1983		
Map Zone:	Colorado Northern Zone		

Site	9N-60W-25 PEGGY 2525 PAD			
Site Position:		Northing:	1,511,260.26 usft	Latitude: 40.727757
From:	Lat/Long	Easting:	3,402,379.40 usft	Longitude: -104.048161
Position Uncertainty:	0.00 usft	Slot Radius:	13-3/16 "	

Well	PEGGY 2525-02H			
Well Position	+N/-S	0.00 usft	Northing:	1,506,563.84 usft
	+E/-W	0.00 usft	Easting:	3,404,420.74 usft
Position Uncertainty		3.28 usft	Wellhead Elevation:	usft
Grid Convergence:		0.94 °	Ground Level:	4,894.00 usft

Wellbore	Plan B				
Magnetics	Model Name	Sample Date	Declination (°)	Dip Angle (°)	Field Strength (nT)
	IGRF202013	5/17/2022	7.39	66.96	52,092.48491378

Design	Design #2				
Audit Notes:					
Version:		Phase:	PLAN	Tie On Depth:	0.00
Vertical Section:	Depth From (TVD) (usft)	+N/-S (usft)	+E/-W (usft)	Direction (°)	
	0.00	0.00	0.00	0.71	

Plan Survey Tool Program		Date	5/17/2022		
Depth From (usft)	Depth To (usft)	Survey (Wellbore)	Tool Name	Remarks	
1	0.00	1,575.00	Design #2 (Plan B)	ISCWSA MWD	
				Fixed:v2:standard declination	
2	1,575.00	11,253.21	Design #2 (Plan B)	ISCWSA MWD	
				Fixed:v2:standard declination	

Planning Report

Database:	EDM 5000.16 Single User Db	Local Co-ordinate Reference:	Well PEGGY 2525-02H
Company:	VERDAD RESOURCES	TVD Reference:	RKB = 20' @ 4914.00usft (RIG)
Project:	WATTENBERG FIELD	MD Reference:	RKB = 20' @ 4914.00usft (RIG)
Site:	9N-60W-25 PEGGY 2525 PAD	North Reference:	True
Well:	PEGGY 2525-02H	Survey Calculation Method:	Minimum Curvature
Wellbore:	Plan B		
Design:	Design #2		

Plan Sections										
Measured Depth (usft)	Inclination (°)	Azimuth (°)	Vertical Depth (usft)	+N/-S (usft)	+E/-W (usft)	Dogleg Rate (°/100usft)	Build Rate (°/100usft)	Turn Rate (°/100usft)	TFO (°)	Target
0.00	0.00	0.00	0.00	0.00	0.00	0.00	0.00	0.00	0.00	
269.75	0.00	0.00	269.75	0.00	0.00	0.00	0.00	0.00	0.00	
1,139.75	17.40	244.91	1,126.44	-55.59	-118.72	2.00	2.00	0.00	244.91	
5,730.95	17.40	244.91	5,507.55	-637.78	-1,362.13	0.00	0.00	0.00	0.00	
6,814.05	90.00	0.71	6,200.00	-4.19	-1,549.63	9.00	6.70	10.69	114.77	
11,253.21	90.00	0.71	6,200.00	4,434.63	-1,494.41	0.00	0.00	0.00	0.00	PEGGY 2525-02H_BI

Planning Report

Database:	EDM 5000.16 Single User Db	Local Co-ordinate Reference:	Well PEGGY 2525-02H
Company:	VERDAD RESOURCES	TVD Reference:	RKB = 20' @ 4914.00usft (RIG)
Project:	WATTENBERG FIELD	MD Reference:	RKB = 20' @ 4914.00usft (RIG)
Site:	9N-60W-25 PEGGY 2525 PAD	North Reference:	True
Well:	PEGGY 2525-02H	Survey Calculation Method:	Minimum Curvature
Wellbore:	Plan B		
Design:	Design #2		

Planned Survey									
Measured Depth (usft)	Inclination (°)	Azimuth (°)	Vertical Depth (usft)	+N/-S (usft)	+E/-W (usft)	Vertical Section (usft)	Dogleg Rate (°/100usft)	Build Rate (°/100usft)	Turn Rate (°/100usft)
0.00	0.00	0.00	0.00	0.00	0.00	0.00	0.00	0.00	0.00
100.00	0.00	0.00	100.00	0.00	0.00	0.00	0.00	0.00	0.00
200.00	0.00	0.00	200.00	0.00	0.00	0.00	0.00	0.00	0.00
269.75	0.00	0.00	269.75	0.00	0.00	0.00	0.00	0.00	0.00
Begin Nudge @ 269.75ft									
300.00	0.60	244.91	300.00	-0.07	-0.14	-0.07	2.00	2.00	0.00
400.00	2.60	244.91	399.96	-1.26	-2.68	-1.29	2.00	2.00	0.00
500.00	4.60	244.91	499.75	-3.92	-8.38	-4.02	2.00	2.00	0.00
600.00	6.60	244.91	599.27	-8.06	-17.22	-8.28	2.00	2.00	0.00
700.00	8.60	244.91	698.38	-13.67	-29.21	-14.04	2.00	2.00	0.00
800.00	10.60	244.91	796.98	-20.75	-44.32	-21.30	2.00	2.00	0.00
900.00	12.60	244.91	894.93	-29.28	-62.53	-30.05	2.00	2.00	0.00
1,000.00	14.60	244.91	992.12	-39.25	-83.83	-40.29	2.00	2.00	0.00
1,100.00	16.60	244.91	1,088.43	-50.66	-108.20	-52.00	2.00	2.00	0.00
1,139.75	17.40	244.91	1,126.44	-55.59	-118.72	-57.06	2.00	2.00	0.00
Hold Tangent @ 1139.75ft									
1,200.00	17.40	244.91	1,183.93	-63.23	-135.04	-64.90	0.00	0.00	0.00
1,300.00	17.40	244.91	1,279.36	-75.91	-162.12	-77.91	0.00	0.00	0.00
1,400.00	17.40	244.91	1,374.78	-88.59	-189.20	-90.93	0.00	0.00	0.00
1,500.00	17.40	244.91	1,470.20	-101.27	-216.29	-103.94	0.00	0.00	0.00
1,600.00	17.40	244.91	1,565.63	-113.95	-243.37	-116.96	0.00	0.00	0.00
1,609.82	17.40	244.91	1,575.00	-115.20	-246.03	-118.24	0.00	0.00	0.00
9 5/8"									
1,700.00	17.40	244.91	1,661.05	-126.63	-270.45	-129.97	0.00	0.00	0.00
1,800.00	17.40	244.91	1,756.48	-139.31	-297.53	-142.99	0.00	0.00	0.00
1,900.00	17.40	244.91	1,851.90	-151.99	-324.62	-156.00	0.00	0.00	0.00
2,000.00	17.40	244.91	1,947.32	-164.67	-351.70	-169.02	0.00	0.00	0.00
2,100.00	17.40	244.91	2,042.75	-177.35	-378.78	-182.03	0.00	0.00	0.00
2,200.00	17.40	244.91	2,138.17	-190.03	-405.86	-195.05	0.00	0.00	0.00
2,300.00	17.40	244.91	2,233.60	-202.71	-432.95	-208.06	0.00	0.00	0.00
2,400.00	17.40	244.91	2,329.02	-215.40	-460.03	-221.08	0.00	0.00	0.00
2,500.00	17.40	244.91	2,424.44	-228.08	-487.11	-234.09	0.00	0.00	0.00
2,600.00	17.40	244.91	2,519.87	-240.76	-514.19	-247.11	0.00	0.00	0.00
2,700.00	17.40	244.91	2,615.29	-253.44	-541.28	-260.12	0.00	0.00	0.00
2,800.00	17.40	244.91	2,710.72	-266.12	-568.36	-273.14	0.00	0.00	0.00
2,900.00	17.40	244.91	2,806.14	-278.80	-595.44	-286.16	0.00	0.00	0.00
3,000.00	17.40	244.91	2,901.56	-291.48	-622.52	-299.17	0.00	0.00	0.00
3,100.00	17.40	244.91	2,996.99	-304.16	-649.61	-312.19	0.00	0.00	0.00
3,200.00	17.40	244.91	3,092.41	-316.84	-676.69	-325.20	0.00	0.00	0.00
3,300.00	17.40	244.91	3,187.84	-329.52	-703.77	-338.22	0.00	0.00	0.00
3,400.00	17.40	244.91	3,283.26	-342.20	-730.85	-351.23	0.00	0.00	0.00
3,500.00	17.40	244.91	3,378.68	-354.88	-757.94	-364.25	0.00	0.00	0.00
3,600.00	17.40	244.91	3,474.11	-367.56	-785.02	-377.26	0.00	0.00	0.00
3,700.00	17.40	244.91	3,569.53	-380.24	-812.10	-390.28	0.00	0.00	0.00
3,800.00	17.40	244.91	3,664.96	-392.92	-839.18	-403.29	0.00	0.00	0.00
3,900.00	17.40	244.91	3,760.38	-405.60	-866.26	-416.31	0.00	0.00	0.00
4,000.00	17.40	244.91	3,855.80	-418.28	-893.35	-429.32	0.00	0.00	0.00
4,100.00	17.40	244.91	3,951.23	-430.96	-920.43	-442.34	0.00	0.00	0.00
4,200.00	17.40	244.91	4,046.65	-443.65	-947.51	-455.35	0.00	0.00	0.00
4,300.00	17.40	244.91	4,142.08	-456.33	-974.59	-468.37	0.00	0.00	0.00
4,400.00	17.40	244.91	4,237.50	-469.01	-1,001.68	-481.38	0.00	0.00	0.00
4,500.00	17.40	244.91	4,332.92	-481.69	-1,028.76	-494.40	0.00	0.00	0.00
4,600.00	17.40	244.91	4,428.35	-494.37	-1,055.84	-507.41	0.00	0.00	0.00

Planning Report

Database:	EDM 5000.16 Single User Db	Local Co-ordinate Reference:	Well PEGGY 2525-02H
Company:	VERDAD RESOURCES	TVD Reference:	RKB = 20' @ 4914.00usft (RIG)
Project:	WATTENBERG FIELD	MD Reference:	RKB = 20' @ 4914.00usft (RIG)
Site:	9N-60W-25 PEGGY 2525 PAD	North Reference:	True
Well:	PEGGY 2525-02H	Survey Calculation Method:	Minimum Curvature
Wellbore:	Plan B		
Design:	Design #2		

Planned Survey									
Measured Depth (usft)	Inclination (°)	Azimuth (°)	Vertical Depth (usft)	+N/-S (usft)	+E/-W (usft)	Vertical Section (usft)	Dogleg Rate (°/100usft)	Build Rate (°/100usft)	Turn Rate (°/100usft)
4,700.00	17.40	244.91	4,523.77	-507.05	-1,082.92	-520.43	0.00	0.00	0.00
4,800.00	17.40	244.91	4,619.20	-519.73	-1,110.01	-533.44	0.00	0.00	0.00
4,900.00	17.40	244.91	4,714.62	-532.41	-1,137.09	-546.46	0.00	0.00	0.00
5,000.00	17.40	244.91	4,810.05	-545.09	-1,164.17	-559.47	0.00	0.00	0.00
5,100.00	17.40	244.91	4,905.47	-557.77	-1,191.25	-572.49	0.00	0.00	0.00
5,200.00	17.40	244.91	5,000.89	-570.45	-1,218.34	-585.50	0.00	0.00	0.00
5,300.00	17.40	244.91	5,096.32	-583.13	-1,245.42	-598.52	0.00	0.00	0.00
5,400.00	17.40	244.91	5,191.74	-595.81	-1,272.50	-611.53	0.00	0.00	0.00
5,500.00	17.40	244.91	5,287.17	-608.49	-1,299.58	-624.55	0.00	0.00	0.00
5,600.00	17.40	244.91	5,382.59	-621.17	-1,326.67	-637.57	0.00	0.00	0.00
5,700.00	17.40	244.91	5,478.01	-633.85	-1,353.75	-650.58	0.00	0.00	0.00
5,730.95	17.40	244.91	5,507.55	-637.78	-1,362.13	-654.61	0.00	0.00	0.00
KOP @ 5730.95ft :: DLS = 9°/100'									
5,750.00	16.75	250.32	5,525.76	-639.91	-1,367.30	-656.80	9.00	-3.40	28.39
5,800.00	15.81	266.06	5,573.78	-642.81	-1,380.88	-659.87	9.00	-1.89	31.49
5,850.00	16.08	282.47	5,621.88	-641.78	-1,394.44	-659.01	9.00	0.54	32.82
5,900.00	17.51	297.29	5,669.77	-636.83	-1,407.89	-654.23	9.00	2.87	29.63
5,950.00	19.85	309.32	5,717.15	-628.00	-1,421.15	-645.56	9.00	4.69	24.07
6,000.00	22.83	318.63	5,763.73	-615.33	-1,434.13	-633.06	9.00	5.95	18.61
6,050.00	26.22	325.77	5,809.22	-598.91	-1,446.77	-616.79	9.00	6.79	14.28
6,100.00	29.89	331.32	5,853.34	-578.84	-1,458.97	-596.87	9.00	7.34	11.10
6,150.00	33.75	335.73	5,895.83	-555.23	-1,470.66	-573.42	9.00	7.71	8.83
6,200.00	37.73	339.33	5,936.41	-528.25	-1,481.77	-546.57	9.00	7.96	7.19
6,250.00	41.80	342.32	5,974.84	-498.04	-1,492.24	-516.49	9.00	8.15	5.99
6,300.00	45.94	344.87	6,010.88	-464.81	-1,502.00	-483.38	9.00	8.28	5.10
6,350.00	50.13	347.08	6,044.31	-428.74	-1,510.98	-447.43	9.00	8.38	4.43
6,400.00	54.36	349.04	6,074.92	-390.07	-1,519.14	-408.87	9.00	8.45	3.91
6,450.00	58.61	350.80	6,102.52	-349.04	-1,526.41	-367.93	9.00	8.51	3.52
6,500.00	62.89	352.41	6,126.95	-305.89	-1,532.77	-324.86	9.00	8.55	3.21
6,550.00	67.18	353.89	6,148.05	-260.90	-1,538.16	-279.94	9.00	8.59	2.98
6,600.00	71.49	355.29	6,165.69	-214.34	-1,542.56	-233.44	9.00	8.61	2.79
6,650.00	75.80	356.62	6,179.77	-166.49	-1,545.94	-185.64	9.00	8.63	2.66
6,700.00	80.13	357.90	6,190.19	-117.66	-1,548.27	-136.84	9.00	8.65	2.56
6,750.00	84.45	359.14	6,196.90	-68.14	-1,549.55	-87.34	9.00	8.66	2.49
6,800.00	88.78	0.37	6,199.85	-18.24	-1,549.76	-37.45	9.00	8.66	2.45
6,814.05	90.00	0.71	6,200.00	-4.19	-1,549.63	-23.40	9.00	8.66	2.44
End Build/TPZ @ 6814.05ft									
6,900.00	90.00	0.71	6,200.00	81.75	-1,548.56	62.55	0.00	0.00	0.00
7,000.00	90.00	0.71	6,200.00	181.74	-1,547.32	162.55	0.00	0.00	0.00
7,100.00	90.00	0.71	6,200.00	281.73	-1,546.07	262.55	0.00	0.00	0.00
7,200.00	90.00	0.71	6,200.00	381.73	-1,544.83	362.55	0.00	0.00	0.00
7,300.00	90.00	0.71	6,200.00	481.72	-1,543.59	462.55	0.00	0.00	0.00
7,400.00	90.00	0.71	6,200.00	581.71	-1,542.34	562.55	0.00	0.00	0.00
7,500.00	90.00	0.71	6,200.00	681.70	-1,541.10	662.55	0.00	0.00	0.00
7,600.00	90.00	0.71	6,200.00	781.69	-1,539.85	762.55	0.00	0.00	0.00
7,700.00	90.00	0.71	6,200.00	881.69	-1,538.61	862.55	0.00	0.00	0.00
7,800.00	90.00	0.71	6,200.00	981.68	-1,537.37	962.55	0.00	0.00	0.00
7,900.00	90.00	0.71	6,200.00	1,081.67	-1,536.12	1,062.55	0.00	0.00	0.00
8,000.00	90.00	0.71	6,200.00	1,181.66	-1,534.88	1,162.55	0.00	0.00	0.00
8,100.00	90.00	0.71	6,200.00	1,281.66	-1,533.64	1,262.55	0.00	0.00	0.00
8,200.00	90.00	0.71	6,200.00	1,381.65	-1,532.39	1,362.55	0.00	0.00	0.00
8,300.00	90.00	0.71	6,200.00	1,481.64	-1,531.15	1,462.55	0.00	0.00	0.00
8,400.00	90.00	0.71	6,200.00	1,581.63	-1,529.90	1,562.55	0.00	0.00	0.00
8,500.00	90.00	0.71	6,200.00	1,681.62	-1,528.66	1,662.55	0.00	0.00	0.00

Planning Report

Database:	EDM 5000.16 Single User Db	Local Co-ordinate Reference:	Well PEGGY 2525-02H
Company:	VERDAD RESOURCES	TVD Reference:	RKB = 20' @ 4914.00usft (RIG)
Project:	WATTENBERG FIELD	MD Reference:	RKB = 20' @ 4914.00usft (RIG)
Site:	9N-60W-25 PEGGY 2525 PAD	North Reference:	True
Well:	PEGGY 2525-02H	Survey Calculation Method:	Minimum Curvature
Wellbore:	Plan B		
Design:	Design #2		

Planned Survey										
Measured Depth (usft)	Inclination (°)	Azimuth (°)	Vertical Depth (usft)	+N/-S (usft)	+E/-W (usft)	Vertical Section (usft)	Dogleg Rate (°/100usft)	Build Rate (°/100usft)	Turn Rate (°/100usft)	
8,600.00	90.00	0.71	6,200.00	1,781.62	-1,527.42	1,762.55	0.00	0.00	0.00	
8,700.00	90.00	0.71	6,200.00	1,881.61	-1,526.17	1,862.55	0.00	0.00	0.00	
8,800.00	90.00	0.71	6,200.00	1,981.60	-1,524.93	1,962.55	0.00	0.00	0.00	
8,900.00	90.00	0.71	6,200.00	2,081.59	-1,523.68	2,062.55	0.00	0.00	0.00	
9,000.00	90.00	0.71	6,200.00	2,181.59	-1,522.44	2,162.55	0.00	0.00	0.00	
9,100.00	90.00	0.71	6,200.00	2,281.58	-1,521.20	2,262.55	0.00	0.00	0.00	
9,200.00	90.00	0.71	6,200.00	2,381.57	-1,519.95	2,362.55	0.00	0.00	0.00	
9,300.00	90.00	0.71	6,200.00	2,481.56	-1,518.71	2,462.55	0.00	0.00	0.00	
9,400.00	90.00	0.71	6,200.00	2,581.56	-1,517.47	2,562.55	0.00	0.00	0.00	
9,500.00	90.00	0.71	6,200.00	2,681.55	-1,516.22	2,662.55	0.00	0.00	0.00	
9,600.00	90.00	0.71	6,200.00	2,781.54	-1,514.98	2,762.55	0.00	0.00	0.00	
9,700.00	90.00	0.71	6,200.00	2,881.53	-1,513.73	2,862.55	0.00	0.00	0.00	
9,800.00	90.00	0.71	6,200.00	2,981.52	-1,512.49	2,962.55	0.00	0.00	0.00	
9,900.00	90.00	0.71	6,200.00	3,081.52	-1,511.25	3,062.55	0.00	0.00	0.00	
10,000.00	90.00	0.71	6,200.00	3,181.51	-1,510.00	3,162.55	0.00	0.00	0.00	
10,100.00	90.00	0.71	6,200.00	3,281.50	-1,508.76	3,262.55	0.00	0.00	0.00	
10,200.00	90.00	0.71	6,200.00	3,381.49	-1,507.51	3,362.55	0.00	0.00	0.00	
10,300.00	90.00	0.71	6,200.00	3,481.49	-1,506.27	3,462.55	0.00	0.00	0.00	
10,400.00	90.00	0.71	6,200.00	3,581.48	-1,505.03	3,562.55	0.00	0.00	0.00	
10,500.00	90.00	0.71	6,200.00	3,681.47	-1,503.78	3,662.55	0.00	0.00	0.00	
10,516.85	90.00	0.71	6,200.00	3,698.32	-1,503.57	3,679.40	0.00	0.00	0.00	
Lease Entry @ 10516.85ft										
10,600.00	90.00	0.71	6,200.00	3,781.46	-1,502.54	3,762.55	0.00	0.00	0.00	
10,700.00	90.00	0.71	6,200.00	3,881.45	-1,501.30	3,862.55	0.00	0.00	0.00	
10,800.00	90.00	0.71	6,200.00	3,981.45	-1,500.05	3,962.55	0.00	0.00	0.00	
10,900.00	90.00	0.71	6,200.00	4,081.44	-1,498.81	4,062.55	0.00	0.00	0.00	
11,000.00	90.00	0.71	6,200.00	4,181.43	-1,497.56	4,162.55	0.00	0.00	0.00	
11,100.00	90.00	0.71	6,200.00	4,281.42	-1,496.32	4,262.55	0.00	0.00	0.00	
11,163.22	90.00	0.71	6,200.00	4,344.64	-1,495.53	4,325.77	0.00	0.00	0.00	
BPZ @ 11163.22ft										
11,200.00	90.00	0.71	6,200.00	4,381.42	-1,495.08	4,362.55	0.00	0.00	0.00	
11,253.21	90.00	0.71	6,200.00	4,434.63	-1,494.41	4,415.77	0.00	0.00	0.00	
TD Well @ 11253.21ft										

Casing Points					
Measured Depth (usft)	Vertical Depth (usft)	Name	Casing Diameter (")	Hole Diameter (")	
1,609.82	1,575.00	9 5/8"	9-5/8	13-1/2	

Planning Report

Database:	EDM 5000.16 Single User Db	Local Co-ordinate Reference:	Well PEGGY 2525-02H
Company:	VERDAD RESOURCES	TVD Reference:	RKB = 20' @ 4914.00usft (RIG)
Project:	WATTENBERG FIELD	MD Reference:	RKB = 20' @ 4914.00usft (RIG)
Site:	9N-60W-25 PEGGY 2525 PAD	North Reference:	True
Well:	PEGGY 2525-02H	Survey Calculation Method:	Minimum Curvature
Wellbore:	Plan B		
Design:	Design #2		

Plan Annotations				
Measured Depth (usft)	Vertical Depth (usft)	Local Coordinates		Comment
		+N/-S (usft)	+E/-W (usft)	
269.75	269.75	0.00	0.00	Begin Nudge @ 269.75ft
1,139.75	1,126.44	-55.59	-118.72	Hold Tangent @ 1139.75ft
5,730.95	5,507.55	-637.78	-1,362.13	KOP @ 5730.95ft :: DLS = 9°/100'
6,814.05	6,200.00	-4.19	-1,549.63	End Build/TPZ @ 6814.05ft
10,516.85	6,200.00	3,698.32	-1,503.57	Lease Entry @ 10516.85ft
11,163.22	6,200.00	4,344.64	-1,495.53	BPZ @ 11163.22ft
11,253.21	6,200.00	4,434.63	-1,494.41	TD Well @ 11253.21ft