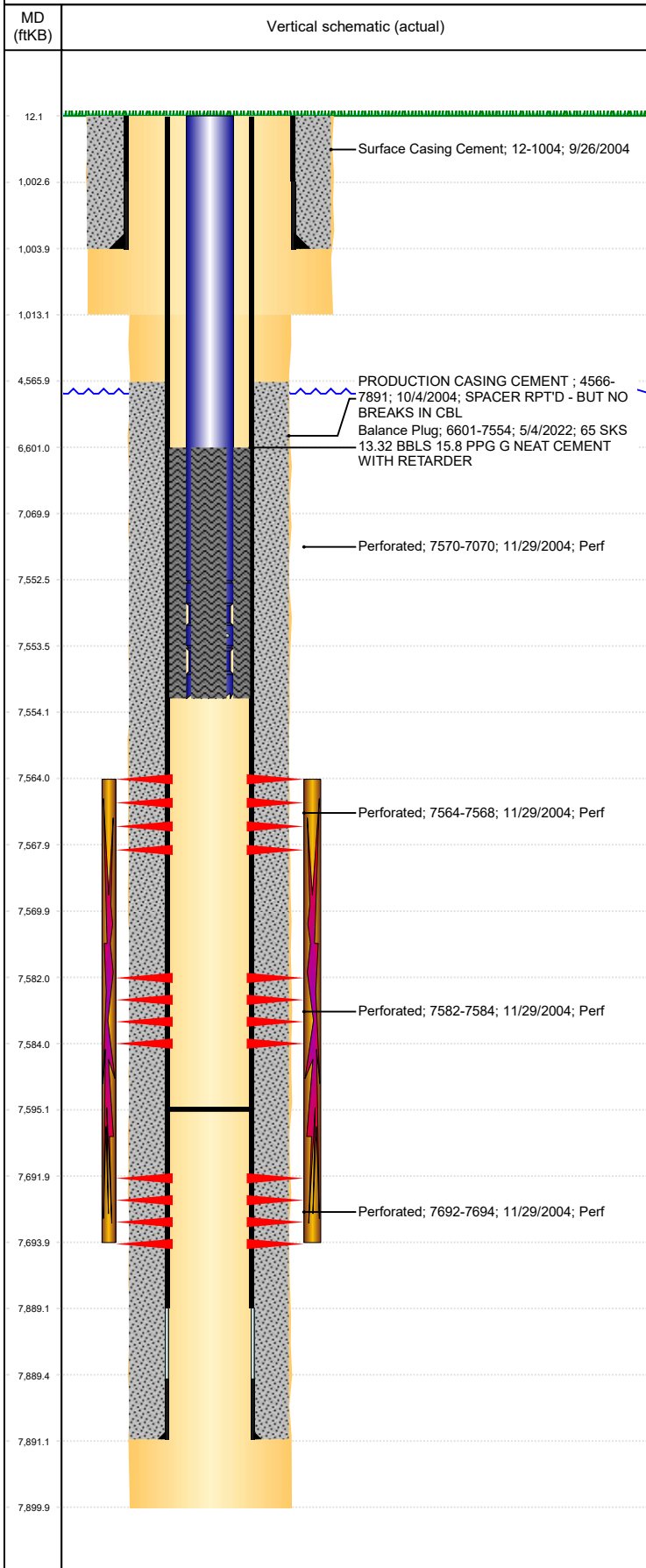




P&A Wellbore For State

Well Name: BELL 41-29

Land, Original Hole, 5/31/2022 2:46:49 PM



Well Header									
Surface UWI 0512322399			Business Unit Rockies			Gov Auth Dist		Prod Tree Loc Land	
Orig. KB to Gnd (ft) 12.00		Original Spud Date 9/25/2004		Abandon Date		Well Sub-Status TA			High... N
Comment									
Surface Location (Congressional)									
Qtr 3 NE	Qtr 4 NE	Section 29	Twnshp 2	Twnsh... N	Range 64	Rng E/... W	Latitude (°) 40.11492264 2	Longitude (°) -104.567951153	
Wellbore Sections									
Section Des			Hole Size (in)			Act Top (ftKB)		Act Btm (ftKB)	
SURFACE			12 1/4			12.0		1,013.0	
PRODUCTION			7 7/8			1,013.0		7,900.0	
Casing Strings									
Csg Des		Run Date		OD (in)	Wt/Len (lb/ft)	Grade	Top Depth (MD) (ftKB)	Set Depth (MD) (ftKB)	
Surface		9/26/2004		8 5/8	24.00	?	12	1004	
Production Casing		10/4/2004		4 1/2	11.60	N-80	12	7891	
Cement									
Des				Start Date		Top (ftKB)		Btm (ftKB)	
Surface Casing Cement				9/26/2004		12.0		1,004.0	
PRODUCTION CASING CEMENT				10/4/2004		4,566.0		7,891.0	
Balance Plug				5/4/2022		6,601.0		7,554.0	
Zone Statuses									
Zone Name		Status Date	Status	Fluid Type	Job			Prod Method	
J SAND		4/14/2016	PR						
J SAND		5/4/2022	TA						
Perforation Data									
Linked Zone		Explosive Type	Entered Shot Total	Top (ftKB)		Btm (ftKB)		Date	
J SAND, Original Hole			16	7,564.0		7,568.0		11/29/2004	
J SAND, Original Hole			20	7,570.0		7,070.0		11/29/2004	
J SAND, Original Hole			8	7,582.0		7,584.0		11/29/2004	
J SAND, Original Hole			8	7,692.0		7,694.0		11/29/2004	
Stimulation Intervals									
Zone			Start Date			Top (ftKB)		Btm (ftKB)	
J SAND, Original Hole			11/30/2004			7,564.0		7,694.0	
Other In Hole									
Run Date		Des			Make	OD (in)	Top (ftKB)	Btm (ftKB)	
Logs									
Date		Type				Depth Top (MD) (ftKB)		Btm (ftKB)	
10/3/2004		COMPENSATED DENSITY				1,004		7,891.0	
10/20/2004		CBL/CCL/GR				3,100		7,830.0	
Plug Back Total Depths									
Date		Type			Com				PBTD (ftKB)
12/2/2004		FILL			CLEAN OUT & LAND TBG				7,724
4/14/2022		FILL							7,595