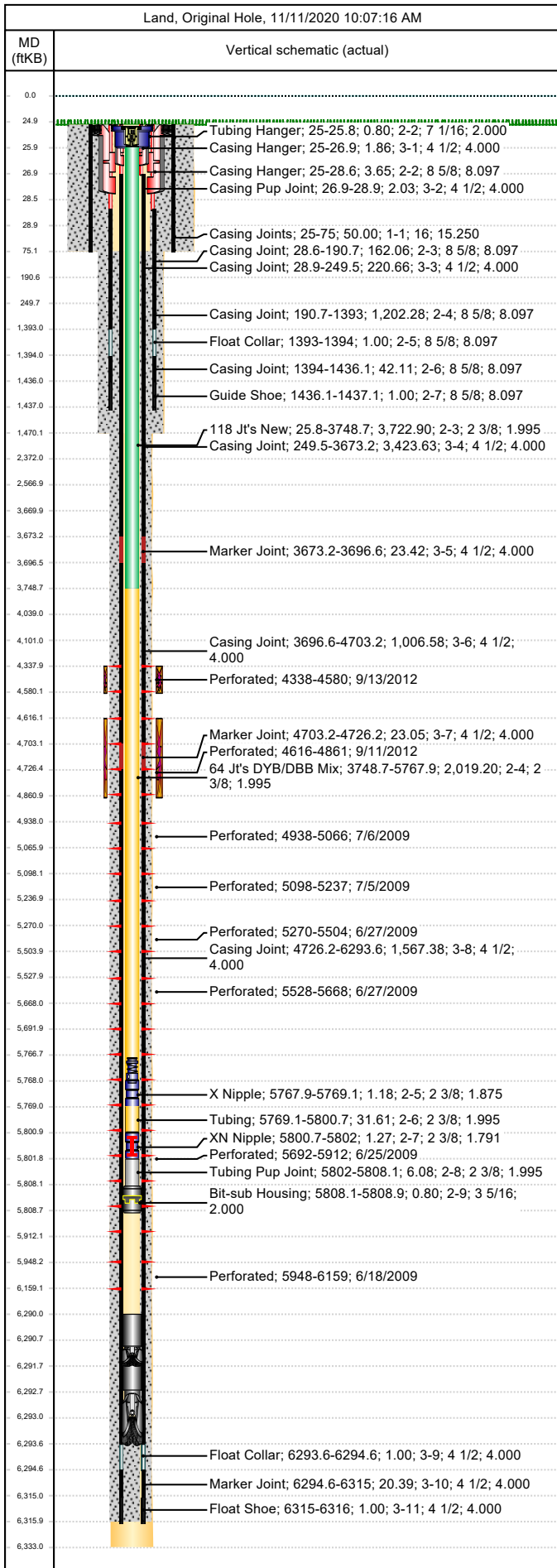




# Wellbore Schematic

Well Name SKR-598-25-AV-17	Lease Chevron USA	Field Name Skinner Ridge	Business Unit Mid-Continent
-------------------------------	----------------------	-----------------------------	--------------------------------

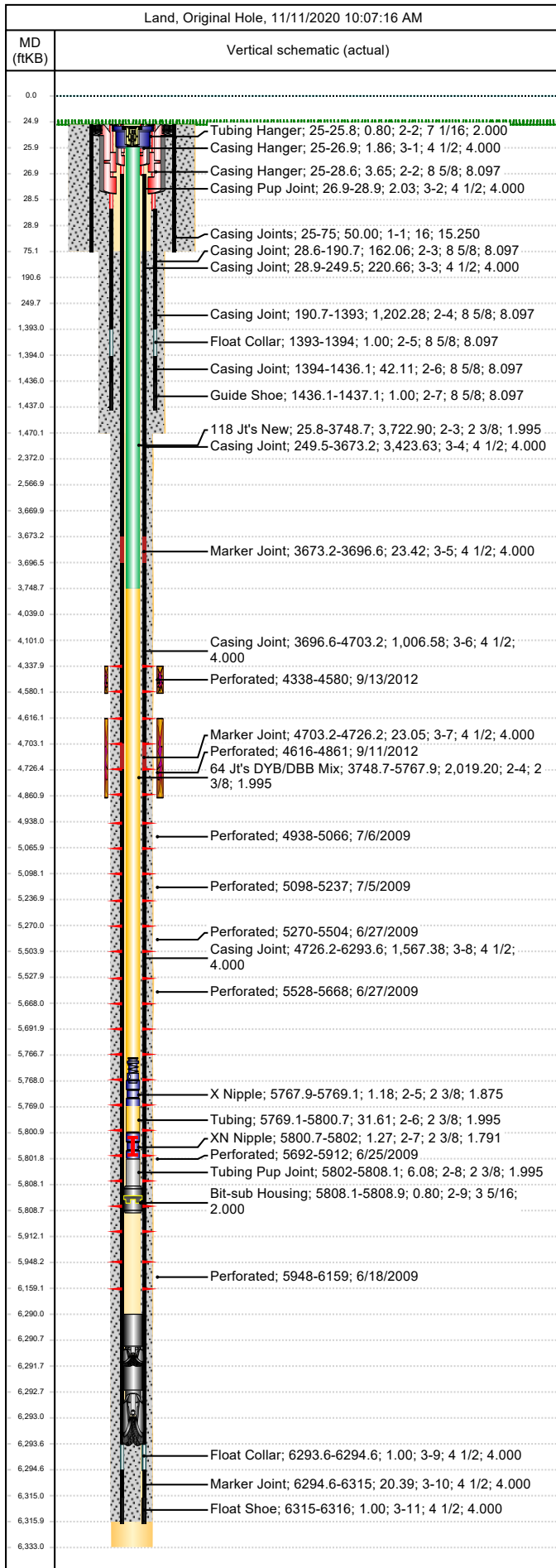


Job Details						
Job Category			Start Date		Rig/Unit End Date	
Casing Strings						
Csg Des	OD (in)	Wt/Len (lb/ft)	Grade	Top Thread	Set Depth (MD) (ftKB)	
Conductor	16	65.00	H-40		75	
Surface	8 5/8	24.00	K-55		1437.1	
Production Casing	4 1/2	11.60	N-80	LT&C	6316	
Tubing Strings						
Tubing - Production set at 5,808.9ftKB on 9/24/2012 17:30						
Tubing Description			Run Date	String Length (ft)	Set Depth (MD) (ftKB)	
Tubing - Production			9/24/2012	5,808.84	5,808.9	
Item Des	Jts	OD (in)	Wt (lb/ft)	Grade	Len (ft)	Btm (ftKB)
KBGL					25.00	25.0
Tubing Hanger		7 1/16			0.80	25.8
118 Jt's New	118	2 3/8	4.70	L-80	3,722.90	3,748.7
64 Jt's DYB/DBB Mix	64	2 3/8	4.70	L-80	2,019.20	5,767.9
X Nipple		2 3/8			1.18	5,769.1
Tubing	1	2 3/8	4.70	L-80	31.61	5,800.7
XN Nipple		2 3/8			1.27	5,802.0
Tubing Pup Joint		2 3/8	4.70	L-80	6.08	5,808.1
Bit-sub Housing		3 5/16			0.80	5,808.9
Tubing Landed @						5,808.9
Perforations						
Date	Top (ftKB)	Btm (ftKB)	Shot Dens (shots/ft)	Entered Shot Total	Linked Zone	
9/13/2012	4,338.0	4,580.0	3.0	30	Mesa Verde - WMFK - Williams Fork, Original Hole	
9/11/2012	4,616.0	4,861.0	3.0	27	Mesa Verde - WMFK - Williams Fork, Original Hole	
7/6/2009	4,938.0	5,066.0	3.0	30	Mesa Verde - WMFK - Williams Fork, Original Hole	
7/5/2009	5,098.0	5,237.0	3.0	24	Mesa Verde - WMFK - Williams Fork, Original Hole	
6/27/2009	5,270.0	5,504.0	3.0	30	Mesa Verde - WMFK - Williams Fork, Original Hole	
6/27/2009	5,528.0	5,668.0	3.0	30	Mesa Verde - WMFK - Williams Fork, Original Hole	
6/25/2009	5,692.0	5,912.0	3.0	27	Mesa Verde - WMFK - Williams Fork, Original Hole	
6/18/2009	5,948.0	6,159.0	3.0	30	Mesa Verde - WMFK - Williams Fork, Original Hole	
Other Strings						
Run Date	Pull Date	Set Depth (ftKB)	Com			
Other In Hole						
Des	Top (ftKB)	Btm (ftKB)	Run Date	Pull Date	Com	
Bear Claw 8K CBP (Kill Plug)	4,288.0	4,290.0	9/17/2012	9/24/2012	Kill Plug	
Bear Claw, 4 1/2" CFP, 8K	4,605.0	4,607.0	9/13/2012	9/24/2012		
Bear Claw Frac Plug	4,740.0	4,742.0	7/6/2009	10/21/2009	Solid CBP - Kill plug.	
Bear Claw 10K solid BP	4,915.0	4,917.0	9/7/2012	9/24/2012	10K CBP	
Bear Claw Frac Plug	5,090.0	5,092.0	7/6/2009	10/21/2009	Bio Ball composite, flow thru, frac, bridge plug	
Bear Claw Frac Plug	5,253.0	5,255.0	6/27/2009	10/21/2009	Bio Ball composite, flow thru, frac, bridge plug	
Bear Claw Frac Plug	5,518.0	5,520.0	6/27/2009	10/22/2009	Bio Ball composite, flow thru, frac, bridge plug	
Bear Claw Frac Plug	5,685.0	5,687.0	6/27/2009	10/22/2009	Bio Ball composite, flow thru, frac, bridge plug	
Tubing Plunger	5,714.2	5,714.8	5/26/2010	4/18/2012		
Bumper Spring	5,714.8	5,716.1	5/26/2010	4/18/2012		
Bumper Spring	5,766.8	5,768.0	7/1/2013			



# Wellbore Schematic

Well Name SKR-598-25-AV-17	Lease Chevron USA	Field Name Skinner Ridge	Business Unit Mid-Continent
-------------------------------	----------------------	-----------------------------	--------------------------------



Other In Hole					
Des	Top (ftKB)	Btm (ftKB)	Run Date	Pull Date	Com
Bear Claw Frac Plug	5,929.0	5,931.0	6/25/2009	10/22/2009	Bio Ball composite, flow thru, frac, bridge plug
4/18/2012, Fill	6,229.0	6,291.6	4/18/2012	9/24/2012	Tag w/ slickline, 4/18/12
Pumped Off Bit-sub	6,290.0	6,290.8	9/24/2012		
Mill	6,290.8	6,291.6	9/24/2012		
Pumped Off Bit-sub	6,291.6	6,292.5	10/22/2009		FN on Bit-Sub, 3 1/8"
Mill	6,292.5	6,293.6	10/22/2009		3-7/8" pump off mill.