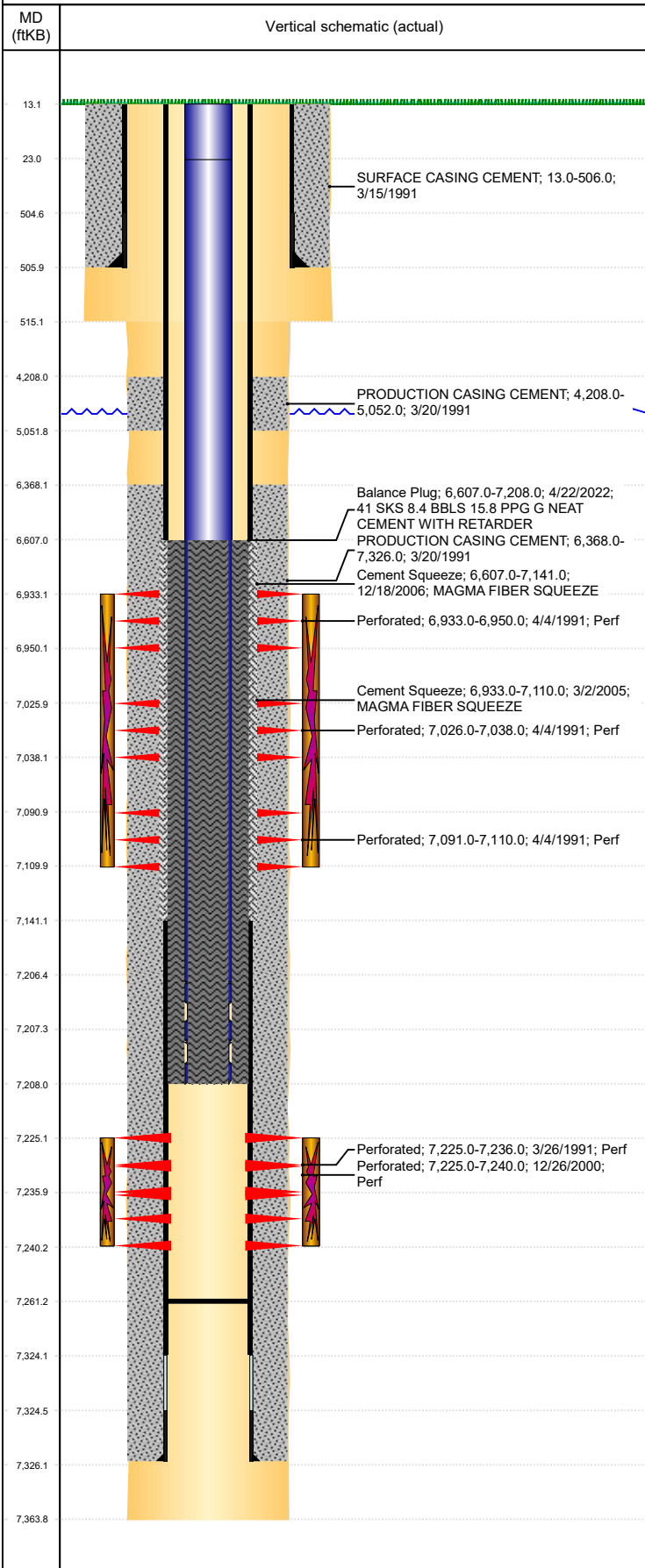


**Well Name: SCHMIDT 19-09G**

VERTICAL, ORIGINAL HOLE, 5/27/2022 4:02:22 PM



Well Header									
API 05-123-14901		Business Unit DJ BASIN			District 15		Well Config VERTICAL		
KB - GL / MSL (ft... 13.00		Spud Date 3/15/1991		P & A Date		Well Production Status TA			SoRT Yes
Comment DISCREPANCY IN SURFACE CSG DEPTH: DRL RPT 506', ST RPT 501'. DISCREPANCY ON TD DATE: DRL RPT 3/20/1991, ST RPT 3/19/1991. USED ST RPT DATE. 3/2/05- 4 SX MAGMA FIBER USED TO SQZ NIOB PERFS. 12/18/06- 4 SX MAGMA FIBER SQZ, UNSURE DEPTH COVERED; USED SAND PLUG @ 7141' FOR BTM & PACKER @ 6607' FOR TOP. CODELL REFRAC SCREENED OUT.									
Surface Location (Congressional)									
Qtr 3 NE	Qtr 4 SE	Section 19	Twonshp 4	Twonsh... N	Range 65	Rng E/... W	Actual Latitude (°) 40.29578320	Actual Longitude (°) -104.69922036	
Wellbore Sections									
Section Des			Size (in)			Act Top, MD (ftKB)		Act Btm, MD (ftKB)	
SURFACE			12 1/4			13		515	
PRODUCTION			7 7/8			515		7,364	
Casing Strings									
Csg Des		Run Date		OD (in)	Wt/Len (lb/ft)	Grade	Top, MD (ftKB)	MD (ftKB)	
Surface		3/15/1991		8 5/8	23.00	M-50	13.0	506.0	
Production		3/20/1991		4 1/2	11.60	M-75	13.0	7,326.0	
Cement									
Des				Start Date		Top (ftKB)		Btm (ftKB)	
SURFACE CASING CEMENT				3/15/1991		13.0		506.0	
PRODUCTION CASING CEMENT				3/20/1991		4,208.0		5,052.0	
PRODUCTION CASING CEMENT				3/20/1991		6,368.0		7,326.0	
Cement Squeeze				3/2/2005		6,933.0		7,110.0	
Cement Squeeze				12/18/2006		6,607.0		7,141.0	
Balance Plug				4/22/2022		6,607.0		7,208.0	
Zone Statuses									
Zone Name	Status Date	Status	Fluid Type	Job				Prod Method	
CODELL	2/20/2007	PR	Oil	TRI-FRAC, 12/13/2006 00:00					
CODELL	4/22/2022	TA	Oil						
NIOBRARA	4/10/1991	PR	Oil	DRILLING/COMPLETION - ORIGINAL, 3/15/1991...					
NIOBRARA	4/22/2022	TA	Oil						
Perforation Data									
Linked Zone		Bnch/Stg	Entered Shot Total	Top (ftKB)		Btm (ftKB)		Date	
CODELL, ORIGINAL HOLE		Yea						8/10/2015	
NIOBRARA, ORIGINAL HOLE		A	10	6,933.00		6,950.00		4/4/1991	
NIOBRARA, ORIGINAL HOLE		B	10	7,026.00		7,038.00		4/4/1991	
NIOBRARA, ORIGINAL HOLE		C	10	7,091.00		7,110.00		4/4/1991	
CODELL, ORIGINAL HOLE			44	7,225.00		7,236.00		3/26/1991	
CODELL, ORIGINAL HOLE			60	7,225.00		7,240.00		12/26/2000	
Stimulation Intervals									
Zone				Start Date		Top (ftKB)		Btm (ftKB)	
NIOBRARA, ORIGINAL HOLE				4/5/1991		6,933.0		7,110.0	
CODELL, ORIGINAL HOLE				3/26/1991		7,225.0		7,240.0	
CODELL, ORIGINAL HOLE				1/4/2001		7,225.0		7,240.0	
CODELL, ORIGINAL HOLE				1/11/2007		7,225.0		7,240.0	
Other In Hole									
Run Date		Des			Make		OD (in)	Top (ftKB)	Btm (ftKB)
Logs									
Date		Type				Top, MD (ftKB)		Btm, MD (ftKB)	
3/19/1991		COMPENSATED DENSITY				13.0		7,364.0	
3/19/1991		INDUCTION				13.0		7,364.0	
3/21/1991		CEMENT BOND				13.0		7,244.0	
Plug Back Total Depths									
Date		Type			Com				Depth (ftKB)
1/15/2007		FILL			C/O				7,273.0
4/13/2022		FILL							7,261.0