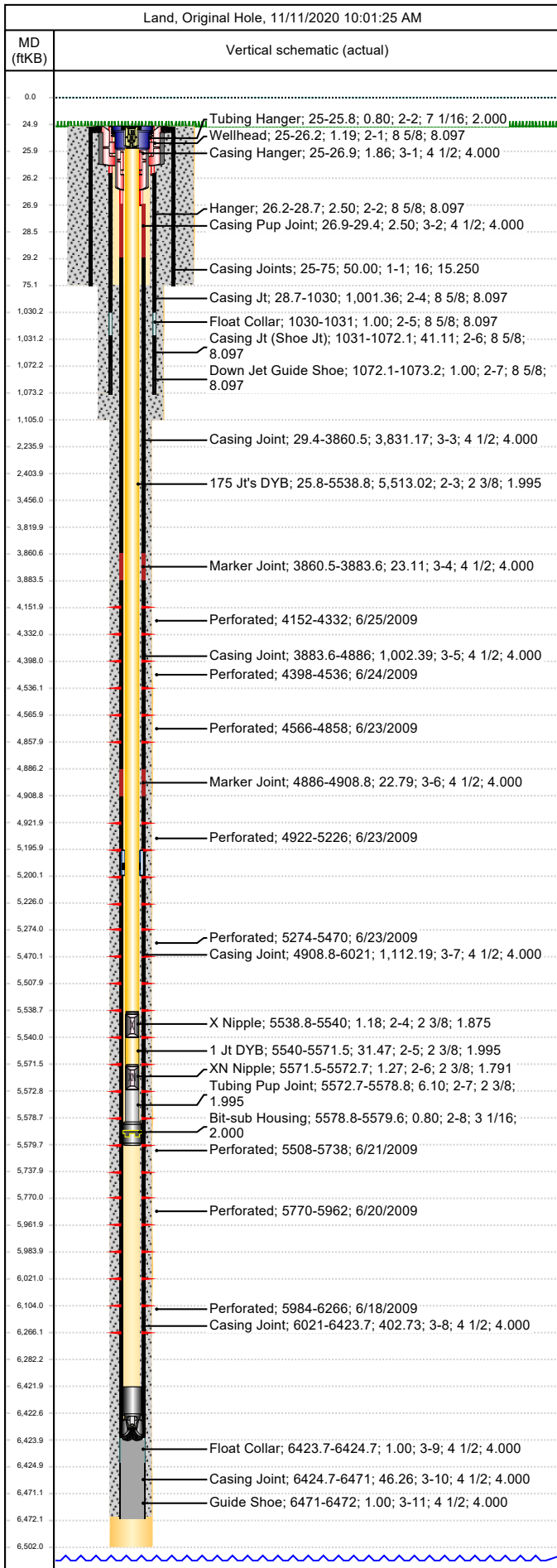




Wellbore Schematic

Well Name SKR-598-25-AV-13	Lease Chevron USA	Field Name Skinner Ridge	Business Unit Mid-Continent
-------------------------------	----------------------	-----------------------------	--------------------------------

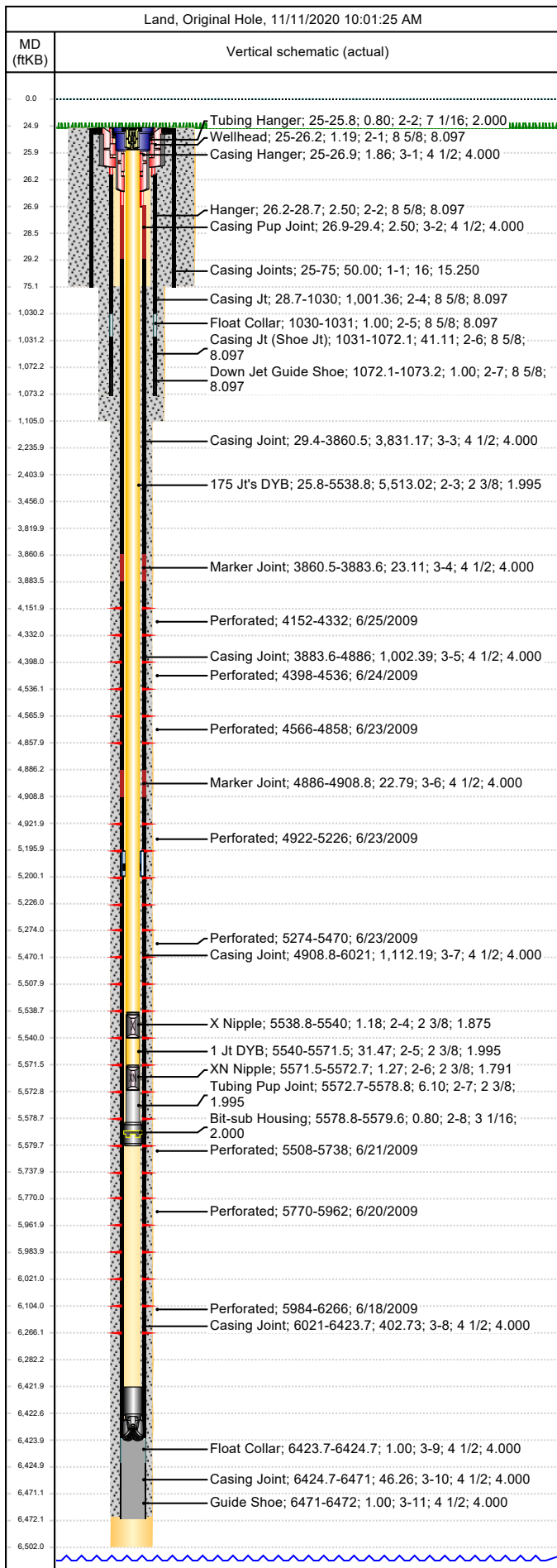


Job Details						
Job Category			Start Date		Rig/Unit End Date	
Major Rig Work Over (MRWO)			6/13/2014		6/18/2014	
Major Rig Work Over (MRWO)			7/15/2014		7/29/2014	
Major Rig Work Over (MRWO)			7/29/2014		8/4/2014	
Casing Strings						
Csg Des	OD (in)	Wt/Len (lb/ft)	Grade	Top Thread	Set Depth (MD) (ftKB)	
Conductor	16	65.00	H-40		75	
Surface	8 5/8	24.00	K-55		1073.2	
Production Casing	4 1/2	11.60	N-80	LT&C	6472	
Tubing Strings						
Tubing - Production set at 5,579.6ftKB on 7/29/2014 08:30						
Tubing Description			Run Date	String Length (ft)	Set Depth (MD) (ftKB)	
Tubing - Production			7/29/2014	5,579.64	5,579.6	
Item Des	Jts	OD (in)	Wt (lb/ft)	Grade	Len (ft)	Btm (ftKB)
KBGL					25.00	25.0
Tubing Hanger		7 1/16			0.80	25.8
175 Jt's DYB	175	2 3/8	4.70	L-80	5,513.02	5,538.8
X Nipple		2 3/8			1.18	5,540.0
1 Jt DYB	1	2 3/8	4.70	L-80	31.47	5,571.5
XN Nipple		2 3/8			1.27	5,572.7
Tubing Pup Joint		2 3/8	4.70	L-80	6.10	5,578.8
Bit-sub Housing		3 1/16			0.80	5,579.6
Tubung Landed @						5,579.6
Perforations						
Date	Top (ftKB)	Btm (ftKB)	Shot Dens (shots/ft)	Entered Shot Total	Linked Zone	
6/25/2009	4,152.0	4,332.0	1.0	27	Mesa Verde - WMFK - Williams Fork, Original Hole	
6/24/2009	4,398.0	4,536.0	1.0	30	Mesa Verde - WMFK - Williams Fork, Original Hole	
6/23/2009	4,566.0	4,858.0	1.0	30	Mesa Verde - WMFK - Williams Fork, Original Hole	
6/23/2009	4,922.0	5,226.0	1.0	30	Mesa Verde - WMFK - Williams Fork, Original Hole	
6/23/2009	5,274.0	5,470.0	1.0	30	Mesa Verde - WMFK - Williams Fork, Original Hole	
6/21/2009	5,508.0	5,738.0	1.0	30	Mesa Verde - WMFK - Williams Fork, Original Hole	
6/20/2009	5,770.0	5,962.0	1.0	30	Mesa Verde - WMFK - Williams Fork, Original Hole	
6/18/2009	5,984.0	6,266.0	1.0	30	Mesa Verde - WMFK - Cameo Coal, Original Hole	
Other Strings						
Run Date	Pull Date	Set Depth (ftKB)	Com			
Other In Hole						
Des	Top (ftKB)	Btm (ftKB)	Run Date	Pull Date	Com	
Tbg. Perfs. 04/20/11	4,000.0	4,002.0	4/20/2011	7/15/2014	Tbg. perfs. 4000'-02' (8 holes) 04/20/11	
Sand Fill in TBG, 04/20/11	4,028.0	4,036.0	4/20/2011	7/15/2014	Tag w/ E-Line @ 4028' 04/20/11.	
Tag sand in tbg w/ WL, 1/25/2011	4,036.0	5,694.0	1/25/2011	7/15/2014	Tag attempting to pull plunger assem, 1/25/11	
Bear Claw Frac Plug	4,120.0	4,122.0	6/25/2009	10/27/2009	Solid Composite Plug	
Bear Claw Frac Plug	4,359.0	4,361.0	6/25/2009	10/27/2009	Bio Ball composite, flow thru, frac, bridge plug	
Bear Claw Frac Plug	4,558.0	4,560.0	6/24/2009	10/27/2009	Bio Ball composite, flow thru, frac, bridge plug	
Bear Claw Frac Plug	4,903.0	4,905.0	6/23/2009	10/28/2009	Bio Ball composite, flow thru, frac, bridge plug	
Fish Top	5,024.9	5,025.9	7/18/2014	7/25/2014		
Tight Spot in Csg	5,196.0	5,200.0	7/24/2014		Tight Spot, 3 7/8". Shoe would slide thru, no issues, OD cutter would hang up but can work thru OK.	



Wellbore Schematic

Well Name SKR-598-25-AV-13	Lease Chevron USA	Field Name Skinner Ridge	Business Unit Mid-Continent
-------------------------------	----------------------	-----------------------------	--------------------------------



Other In Hole					
Des	Top (ftKB)	Btm (ftKB)	Run Date	Pull Date	Com
Bear Claw Frac Plug	5,257.0	5,259.0	6/23/2009	10/28/2009	Bio Ball composite, flow thru, frac, bridge plug
Bear Claw Frac Plug	5,490.0	5,492.0	6/22/2009	10/28/2009	Bio Ball composite, flow thru, frac, bridge plug
Tubing Plunger	5,694.0	5,694.6	5/24/2010	7/25/2014	Revocered during fishing Job
Bumper Spring	5,694.6	5,695.8	5/24/2010	7/25/2014	Revocered during fishing Job
Bear Claw Frac Plug	5,753.0	5,755.0	6/21/2009	10/28/2009	Bio Ball composite, flow thru, frac, bridge plug
Bear Claw Frac Plug	5,976.0	5,978.0	6/20/2009	10/28/2009	Bio Ball composite, flow thru, frac, bridge plug
Sand Fill, 5/25/10	5,987.0	6,421.8	5/25/2010	7/28/2014	Tag w/ slickline, 5/25/10
Pumped Off Bit-sub	6,421.8	6,422.6	10/28/2009		
Mill	6,422.6	6,423.8	10/28/2009		
PBTD	6,423.8	6,472.0	8/7/2008		