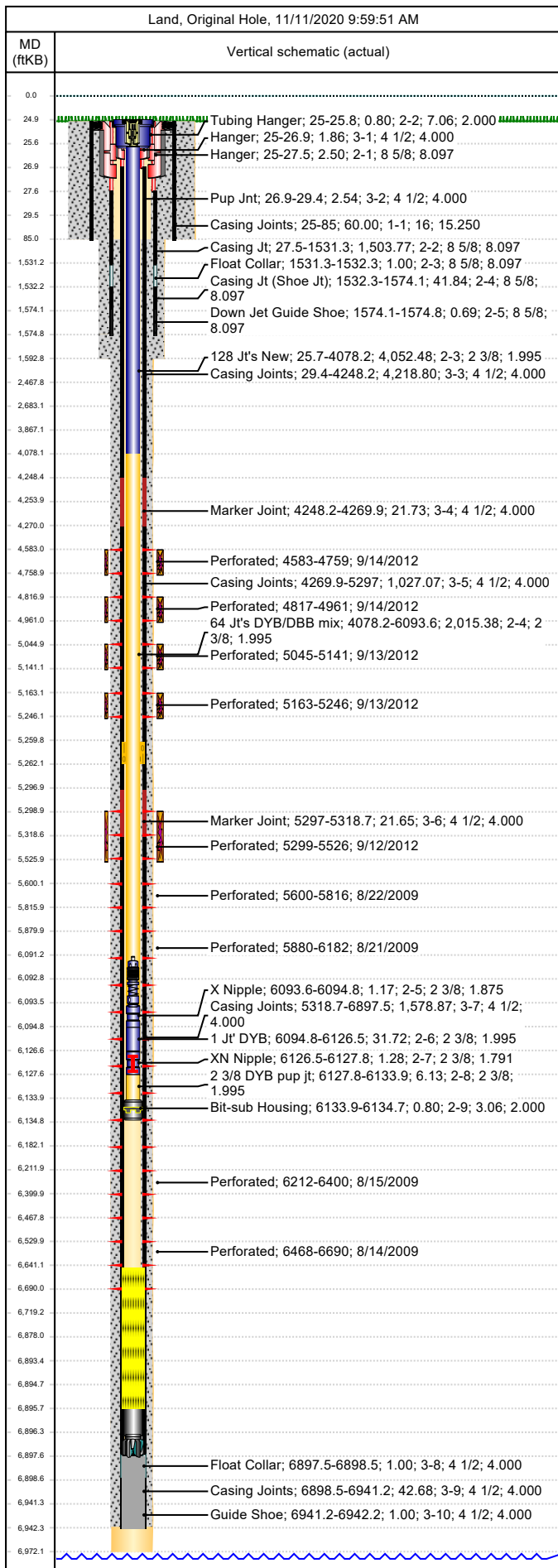




Wellbore Schematic

Well Name SKR-598-25-AV-10	Lease Chevron USA	Field Name Skinner Ridge	Business Unit Mid-Continent
-------------------------------	----------------------	-----------------------------	--------------------------------

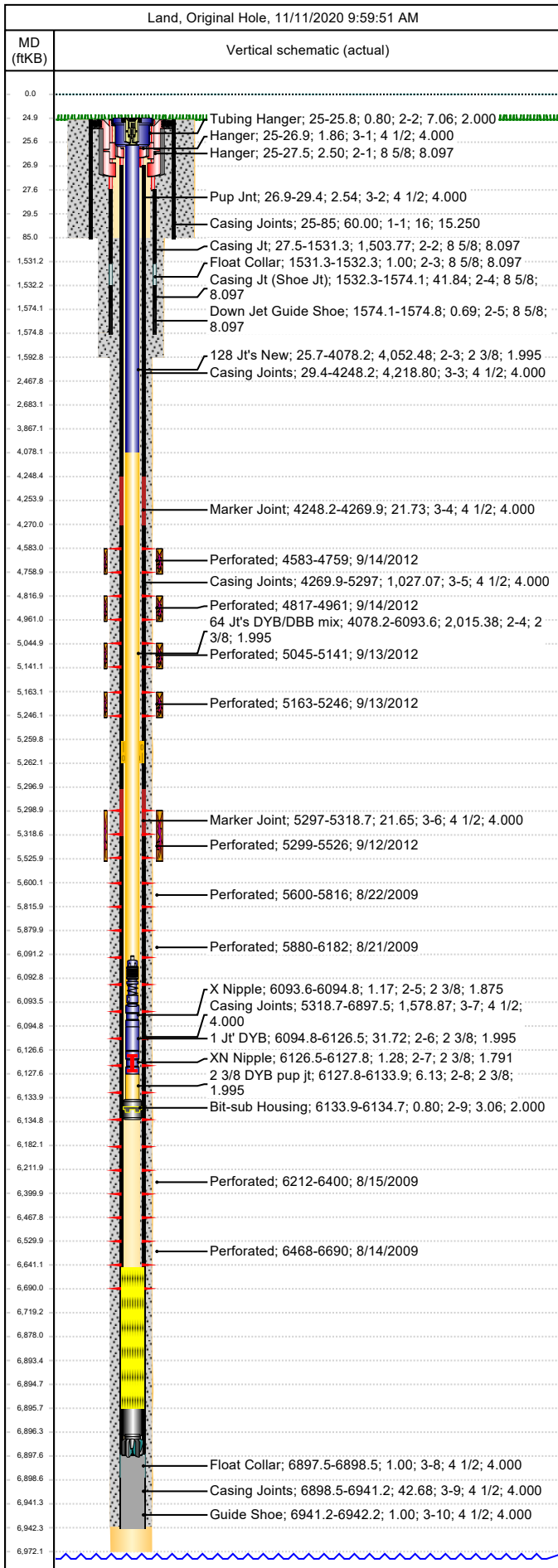


Job Details						
Job Category			Start Date		Rig/Unit End Date	
Well Services			2/9/2015		2/9/2015	
Casing Strings						
Csg Des	OD (in)	Wt/Len (lb/ft)	Grade	Top Thread	Set Depth (MD) (ftKB)	
Conductor	16	65.00	H-40		85	
Surface	8 5/8	24.00	K-55		1574.8	
Production Casing	4 1/2	11.60	L-80		6942.2	
Tubing Strings						
Tubing - Production set at 6,134.7ftKB on 9/18/2012 12:00						
Tubing Description			Run Date	String Length (ft)	Set Depth (MD) (ftKB)	
Tubing - Production			9/18/2012	6,134.76	6,134.7	
Item Des	Jts	OD (in)	Wt (lb/ft)	Grade	Len (ft)	Btm (ftKB)
KBGL					25.00	24.9
Tubing Hanger		7.06			0.80	25.7
128 Jt's New	128	2 3/8	4.70	L-80	4,052.48	4,078.2
64 Jt's DYB/DBB mix	64	2 3/8	4.70	L-80	2,015.38	6,093.6
X Nipple		2 3/8			1.17	6,094.8
1 Jt' DYB	1	2 3/8	4.70	L-80	31.72	6,126.5
XN Nipple		2 3/8			1.28	6,127.8
2 3/8 DYB pup jt		2 3/8	4.70	L-80	6.13	6,133.9
Bit-sub Housing		3.06			0.80	6,134.7
Tubing Landed @						6,134.7
Perforations						
Date	Top (ftKB)	Btm (ftKB)	Shot Dens (shots/ft)	Entered Shot Total	Linked Zone	
9/14/2012	4,583.0	4,759.0	3.0	24	Mesa Verde - WMFK - Williams Fork, Original Hole	
9/14/2012	4,817.0	4,961.0	3.0	27	Mesa Verde - WMFK - Williams Fork, Original Hole	
9/13/2012	5,045.0	5,141.0	3.0	24	Mesa Verde - WMFK - Williams Fork, Original Hole	
9/13/2012	5,163.0	5,246.0	3.0	24	Mesa Verde - WMFK - Williams Fork, Original Hole	
9/12/2012	5,299.0	5,526.0	3.0	30	Mesa Verde - WMFK - Williams Fork, Original Hole	
8/22/2009	5,600.0	5,816.0	3.0	27	Mesa Verde - WMFK - Williams Fork, Original Hole	
8/21/2009	5,880.0	6,182.0	3.0	30	Mesa Verde - WMFK - Williams Fork, Original Hole	
8/15/2009	6,212.0	6,400.0	3.0	30	Mesa Verde - WMFK - Williams Fork, Original Hole	
8/14/2009	6,468.0	6,690.0	3.0	30	Mesa Verde - WMFK - Cameo Coal, Original Hole	
Other Strings						
Run Date	Pull Date	Set Depth (ftKB)	Com			
Other In Hole						
Des	Top (ftKB)	Btm (ftKB)	Run Date	Pull Date	Com	
HES WRTPB	1,965.0	1,968.0	8/25/2009	9/23/2009	Wireline set/tbg retrievable, 10K kill plug.	
Fish (Cable / Wire)	2,025.0	2,064.0	8/25/2009	9/25/2009	10 shot 3 1/8" perf gun, CBP setting tool & Bear Claw frac plug.	
Bear Claw, 4 1/2" CBP, 8K	4,533.0	4,535.0	9/14/2012	9/18/2012	kill plug	
Bear Claw, 4 1/2" CFP, 8K	4,780.0	4,781.0	9/14/2012	9/18/2012		
Bear Claw, 4 1/2" CFP, 8K	4,981.0	4,983.0	9/14/2012	9/18/2012		
Bear Claw, 4 1/2" CFP, 8K	5,154.0	5,156.0	9/13/2012	9/18/2012		
Bear Claw, 4 1/2" CFP, 8K	5,253.0	5,255.0	9/13/2012	9/18/2012		
Bad spot in csg	5,260.0	5,262.0	9/11/2012		CCL showed spot, pkr verify	



Wellbore Schematic

Well Name SKR-598-25-AV-10	Lease Chevron USA	Field Name Skinner Ridge	Business Unit Mid-Continent
-------------------------------	----------------------	-----------------------------	--------------------------------



Other In Hole					
Des	Top (ftKB)	Btm (ftKB)	Run Date	Pull Date	Com
Bear Claw 10K solid CBP	5,545.0	5,547.0	9/12/2012	9/18/2012	10K CBP
Bear Claw 10K solid CBP	5,550.0	5,552.0	9/10/2012	9/18/2012	10K CBP
Bear Claw Frac Plug	5,847.0	5,849.0	8/22/2009	9/25/2009	Bio Ball composite, flow thru, frac, bridge plug
Bumpedr Spring	5,985.0	5,986.0	6/17/2011	9/4/2012	
Tubing Plunger	6,091.3	6,092.8	2/9/2015		
Bumper Spring	6,092.8	6,093.6	2/9/2015		
Bear Claw Frac Plug	6,193.0	6,195.0	8/21/2009	9/25/2009	Bio Ball composite, flow thru, frac, bridge plug
Bear Claw Frac Plug	6,433.0	6,435.0	8/15/2009	9/28/2009	Bio Ball composite, flow thru, frac, bridge plug
Fill (Sand / Mud / Debris)	6,641.0	6,895.6	2/9/2015		Slickline Tag fill @ 6641'
Pumped Off Bit-sub	6,893.4	6,894.6	9/19/2012		
Mill	6,894.6	6,895.6	9/19/2012		
Pumped Off Bit-sub	6,895.6	6,896.4	9/28/2009		
Mill	6,896.4	6,897.6	9/28/2009		
PBTD	6,897.6	6,942.2	6/29/2008		