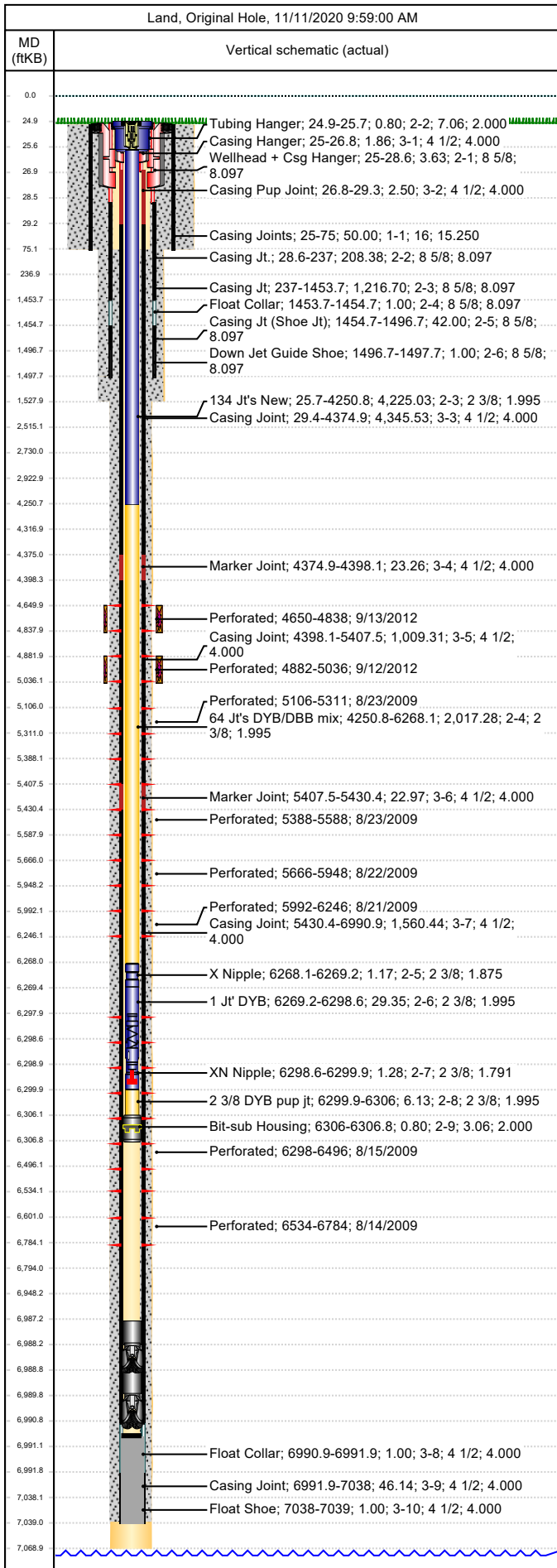




Wellbore Schematic

Well Name SKR-598-25-AV-09	Lease Chevron USA	Field Name Skinner Ridge	Business Unit Mid-Continent
-------------------------------	----------------------	-----------------------------	--------------------------------

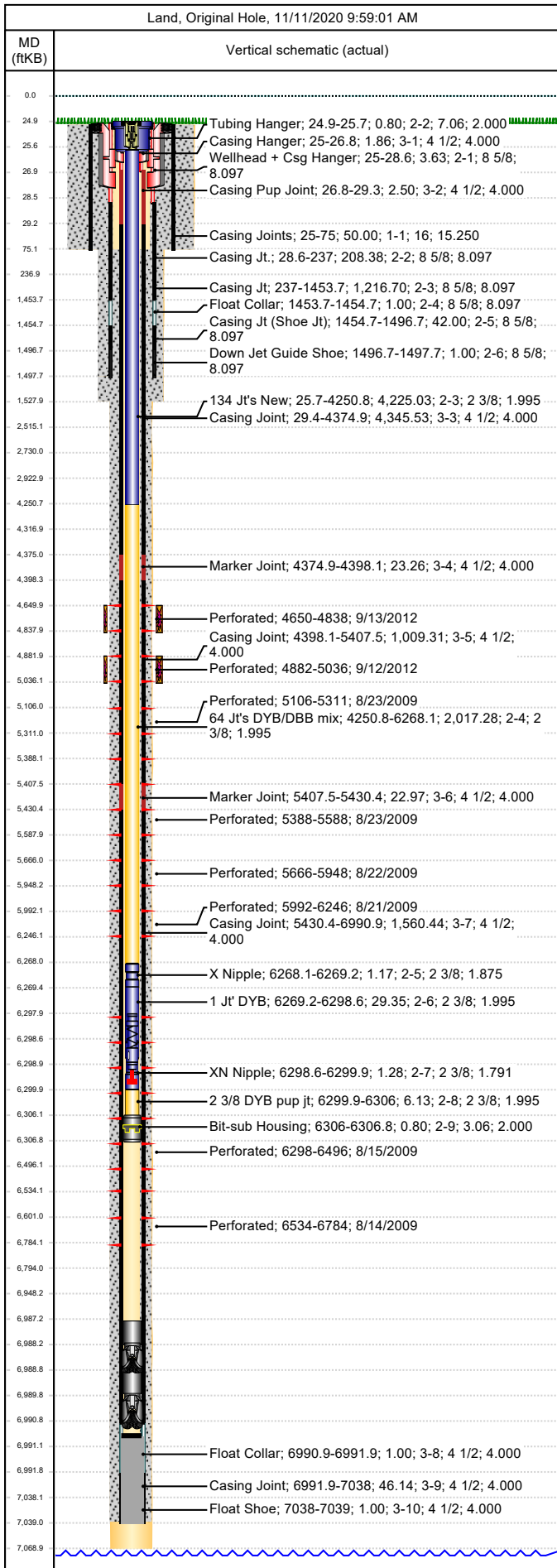


Job Details						
Job Category			Start Date		Rig/Unit End Date	
Casing Strings						
Csg Des	OD (in)	Wt/Len (lb/ft)	Grade	Top Thread	Set Depth (MD) (ftKB)	
Conductor	16	65.00	H-40		75	
Surface	8 5/8	24.00	K-55		1497.7	
Production Casing	4 1/2	11.60	N-80	LT&C	7039	
Tubing Strings						
Tubing - Production set at 6,306.8ftKB on 9/20/2012 17:30						
Tubing Description		Run Date		String Length (ft)	Set Depth (MD) (ftKB)	
Tubing - Production		9/20/2012		6,306.84	6,306.8	
Item Des	Jts	OD (in)	Wt (lb/ft)	Grade	Len (ft)	Btm (ftKB)
KBGL					25.00	25.0
Tubing Hanger		7.06			0.80	25.8
134 Jt's New	134	2 3/8	4.70	L-80	4,225.03	4,250.8
64 Jt's DYB/DBB mix	64	2 3/8	4.70	L-80	2,017.28	6,268.1
X Nipple		2 3/8			1.17	6,269.2
1 Jt' DYB	1	2 3/8	4.70	L-80	29.35	6,298.6
XN Nipple		2 3/8			1.28	6,299.9
2 3/8 DYB pup jt		2 3/8	4.70	L-80	6.13	6,306.0
Bit-sub Housing		3.06			0.80	6,306.8
Tubing Landed @						6,306.8
Perforations						
Date	Top (ftKB)	Btm (ftKB)	Shot Dens (shots/ft)	Entered Shot Total	Linked Zone	
9/13/2012	4,650.0	4,838.0	3.0	27	Mesa Verde - WMFK - Williams Fork, Original Hole	
9/12/2012	4,882.0	5,036.0	3.0	30	Mesa Verde - WMFK - Williams Fork, Original Hole	
8/23/2009	5,106.0	5,311.0	3.0	30	Mesa Verde - WMFK - Williams Fork, Original Hole	
8/23/2009	5,388.0	5,588.0	3.0	27	Mesa Verde - WMFK - Williams Fork, Original Hole	
8/22/2009	5,666.0	5,948.0	3.0	24	Mesa Verde - WMFK - Williams Fork, Original Hole	
8/21/2009	5,992.0	6,246.0	3.0	30	Mesa Verde - WMFK - Williams Fork, Original Hole	
8/15/2009	6,298.0	6,496.0	3.0	30	Mesa Verde - WMFK - Williams Fork, Original Hole	
8/14/2009	6,534.0	6,784.0	3.0	30	Mesa Verde - WMFK - Cameo Coal, Original Hole	
Other Strings						
Run Date	Pull Date	Set Depth (ftKB)	Com			
Other In Hole						
Des	Top (ftKB)	Btm (ftKB)	Run Date	Pull Date	Com	
Bear Claw 4 1/2" CBP (Kill Plug)	4,600.0	4,602.0	9/17/2012	9/20/2012		
Bear Claw 4 1/2" CFP, 8K	4,858.0	4,860.0	9/13/2012	9/20/2012		
Bear Claw 10K solid BP	5,050.0	5,052.0	9/12/2012	9/20/2012	10K CBP	
Bear Claw Kill Plug	5,060.0	5,063.0	8/25/2009	11/4/2009	Kill Plug	
Bear Claw Frac Plug	5,359.0	5,361.0	8/23/2009	11/4/2009	Bio Ball composite, flow thru, frac, bridge plug	
Bear Claw Frac Plug	5,626.0	5,628.0	8/23/2009	11/4/2009	Bio Ball composite, flow thru, frac, bridge plug	
Bear Claw Frac Plug	5,979.0	5,981.0	8/22/2009	11/5/2009	Bio Ball composite, flow thru, frac, bridge plug	
Bear Claw Frac Plug	6,271.0	6,273.0	8/21/2009	11/5/2009	Bio Ball composite, flow thru, frac, bridge plug	
Bumper Spring	6,297.8	6,299.0	7/1/2013			
Tubing Plunger	6,329.0	6,329.7	5/24/2010	11/18/2011		
Bumper Spring	6,329.7	6,330.9	5/24/2010	11/18/2011		



Wellbore Schematic

Well Name SKR-598-25-AV-09	Lease Chevron USA	Field Name Skinner Ridge	Business Unit Mid-Continent
-------------------------------	----------------------	-----------------------------	--------------------------------



Other In Hole					
Des	Top (ftKB)	Btm (ftKB)	Run Date	Pull Date	Com
Bear Claw Frac Plug	6,507.0	6,509.0	8/15/2009	11/5/2009	Bio Ball composite, flow thru, frac, bridge plug
Sand Fill, 11/17/11	6,745.0	6,908.0	11/18/2011	9/20/2012	
Sand Fill, 5/24/2010	6,908.0	6,991.0	5/24/2010	9/20/2012	Tag w/ slickline, 5/24/10
Pumped Off Bit-sub, 9/20/2012	6,987.3	6,988.1	9/20/2012		
Mill, 9/20/2012	6,988.1	6,988.9	9/20/2012		
Pumped Off Bit-sub	6,988.9	6,989.7	11/6/2009		
Mill	6,989.7	6,990.9	11/6/2009		
PBTD	6,991.0	7,039.0	8/3/2008		