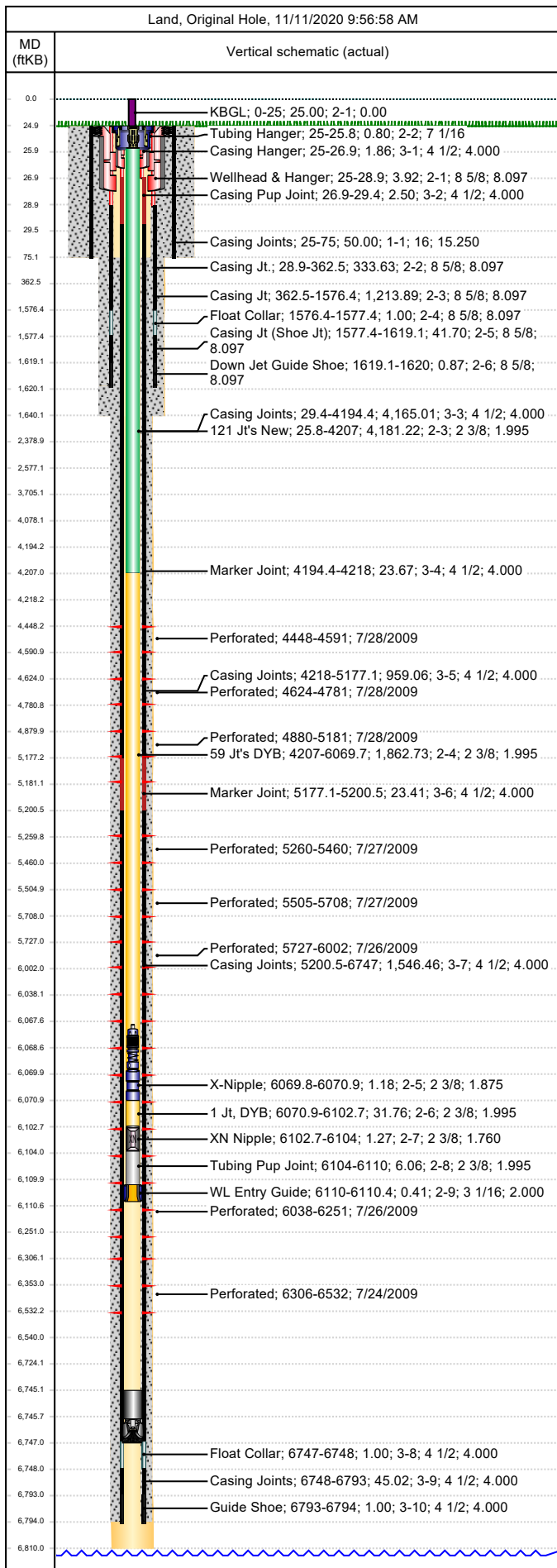




Wellbore Schematic

Well Name SKR-598-25-AV-05	Lease Chevron USA	Field Name Skinner Ridge	Business Unit Mid-Continent
-------------------------------	----------------------	-----------------------------	--------------------------------

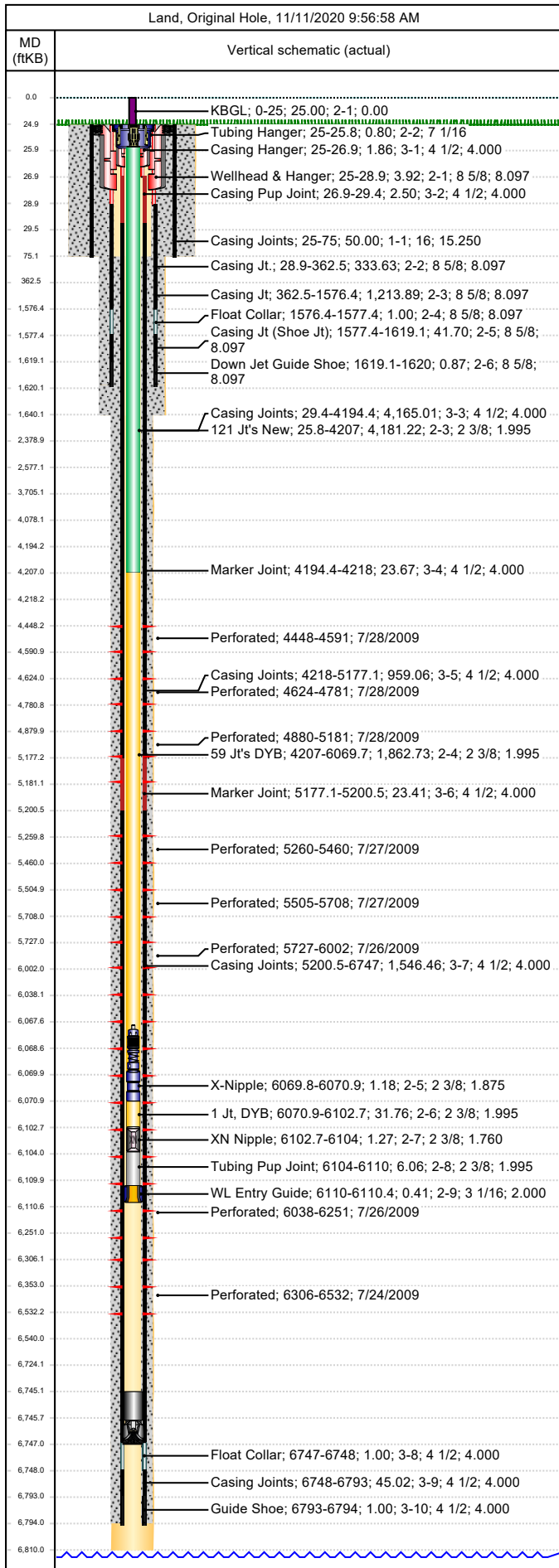


Job Details							
Job Category				Start Date		Rig/Unit End Date	
Casing Strings							
Csg Des	OD (in)	Wt/Len (lb/ft)	Grade	Top Thread	Set Depth (MD) (ftKB)		
Conductor	16	75.00	H-40		75		
Surface	8 5/8	24.00	K-55		1620		
Production Casing	4 1/2	11.60	N-80		6794		
Tubing Strings							
Tubing - Production set at 6,110.4ftKB on 6/6/2012 13:30							
Tubing Description			Run Date		String Length (ft)		Set Depth (MD) (ftKB)
Tubing - Production			6/6/2012		6,110.43		6,110.4
Item Des	Jts	OD (in)	Wt (lb/ft)	Grade	Len (ft)	Btm (ftKB)	
KBGL		0.0			25.00	25.0	
Tubing Hanger		7 1/16			0.80	25.8	
121 Jt's New	132	2 3/8	4.70	L-80	4,181.22	4,207.0	
59 Jt's DYB	59	2 3/8	4.70	L-80	1,862.73	6,069.8	
X-Nipple		2 3/8			1.18	6,070.9	
1 Jt, DYB	1	2 3/8	4.70	L-80	31.76	6,102.7	
XN Nipple		2 3/8			1.27	6,104.0	
Tubing Pup Joint		2 3/8	4.70	L-80	6.06	6,110.0	
WL Entry Guide		3 1/16			0.41	6,110.4	
Tubing landed @					0.00	6,110.4	
Perforations							
Date	Top (ftKB)	Btm (ftKB)	Shot Dens (shots/ft)	Entered Shot Total	Linked Zone		
7/28/2009	4,448.0	4,591.0	3.0	27	Mesa Verde - WMFK - Williams Fork, Original Hole		
7/28/2009	4,624.0	4,781.0	3.0	30	Mesa Verde - WMFK - Williams Fork, Original Hole		
7/28/2009	4,880.0	5,181.0	3.0	30	Mesa Verde - WMFK - Williams Fork, Original Hole		
7/27/2009	5,260.0	5,460.0	3.0	27	Mesa Verde - WMFK - Williams Fork, Original Hole		
7/27/2009	5,505.0	5,708.0	3.0	30	Mesa Verde - WMFK - Williams Fork, Original Hole		
7/26/2009	5,727.0	6,002.0	3.0	30	Mesa Verde - WMFK - Williams Fork, Original Hole		
7/26/2009	6,038.0	6,251.0	3.0	30	Mesa Verde - WMFK - Williams Fork, Original Hole		
7/24/2009	6,306.0	6,532.0	3.0	30	Mesa Verde - WMFK - Cameo Coal, Original Hole		
Other Strings							
Run Date	Pull Date	Set Depth (ftKB)		Com			
Other In Hole							
Des	Top (ftKB)	Btm (ftKB)	Run Date	Pull Date	Com		
Bridge Plug (Retrievable) TTS	176.0	184.0	11/11/2009	11/13/2009	RTTS		
Bear Claw Solid Plug	4,417.0	4,419.0	8/17/2009	11/10/2009	Solid composite, bridge plug.		
Bear Claw Frac Plug	4,604.0	4,606.0	7/28/2009	11/10/2009	Bio Ball composite, flow thru, frac, bridge plug		
Bear Claw Frac Plug	4,830.0	4,832.0	7/28/2009	11/10/2009	Bio Ball composite, flow thru, frac, bridge plug		
Bear Claw Frac Plug	5,220.0	5,222.0	7/28/2009	11/10/2009	Bio Ball composite, flow thru, frac, bridge plug		
Bear Claw Frac Plug	5,482.0	5,484.0	7/27/2009	11/10/2009	Bio Ball composite, flow thru, frac, bridge plug		
Bear Claw Frac Plug	5,721.0	5,723.0	7/27/2009	11/11/2009	Bio Ball composite, flow thru, frac, bridge plug		
Bear Claw Frac Plug	6,019.0	6,021.0	7/26/2009	11/11/2009	Bio Ball composite, flow thru, frac, bridge plug		
Tubing Plunger	6,067.7	6,068.5	8/7/2012				
Bumper Spring	6,068.5	6,069.7	8/7/2012				



Wellbore Schematic

Well Name SKR-598-25-AV-05	Lease Chevron USA	Field Name Skinner Ridge	Business Unit Mid-Continent
-------------------------------	----------------------	-----------------------------	--------------------------------



Other In Hole					
Des	Top (ftKB)	Btm (ftKB)	Run Date	Pull Date	Com
Bear Claw Frac Plug	6,265.0	6,267.0	7/26/2009	11/11/2009	Bio Ball composite, flow thru, frac, bridge plug
Sand Fill, 1/22/10	6,600.0	6,745.0	1/22/2010	6/6/2012	Tag fill w/ slickline 1/22/2010
Sand Fill, 5/24/10	6,600.0	6,745.0	5/24/2010	6/6/2012	Tag fill w/ slickline 5/24/2010, no fill up since tag on 1/22/10.
Pumped Off Bit-sub	6,745.0	6,745.8	11/13/2009		
Mill	6,745.8	6,747.0	11/13/2009		