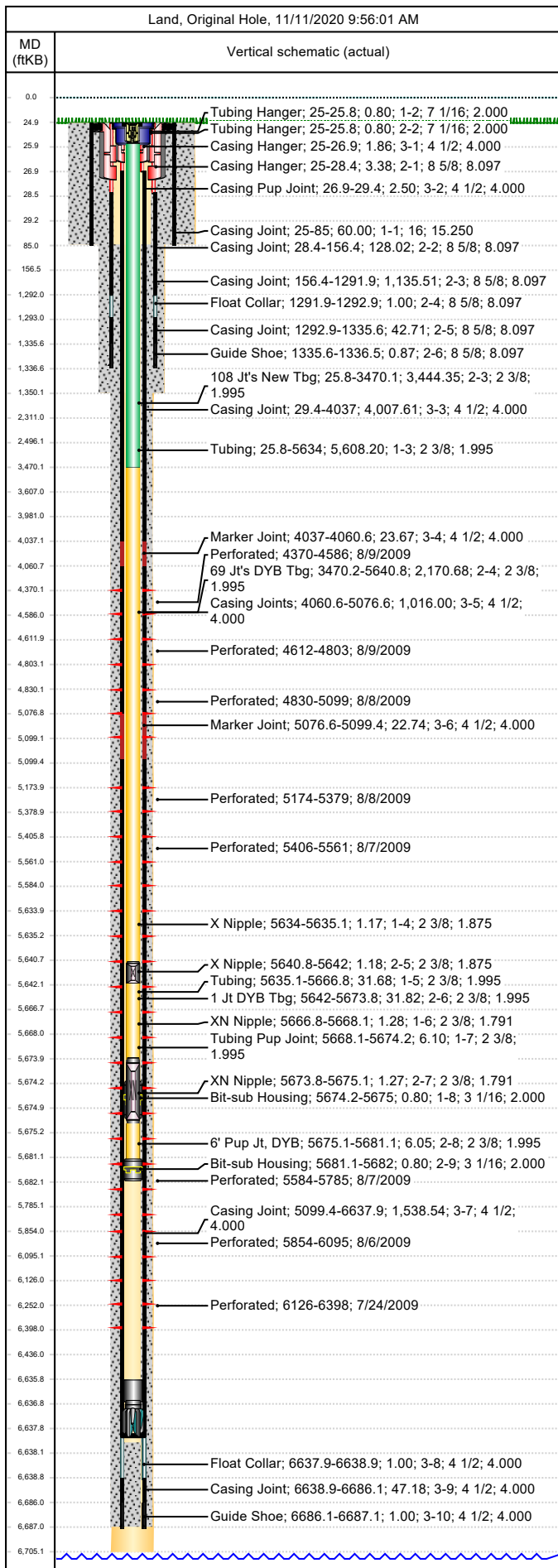




# Wellbore Schematic

Well Name SKR-598-25-AV-03	Lease Chevron USA	Field Name Skinner Ridge	Business Unit Mid-Continent
-------------------------------	----------------------	-----------------------------	--------------------------------

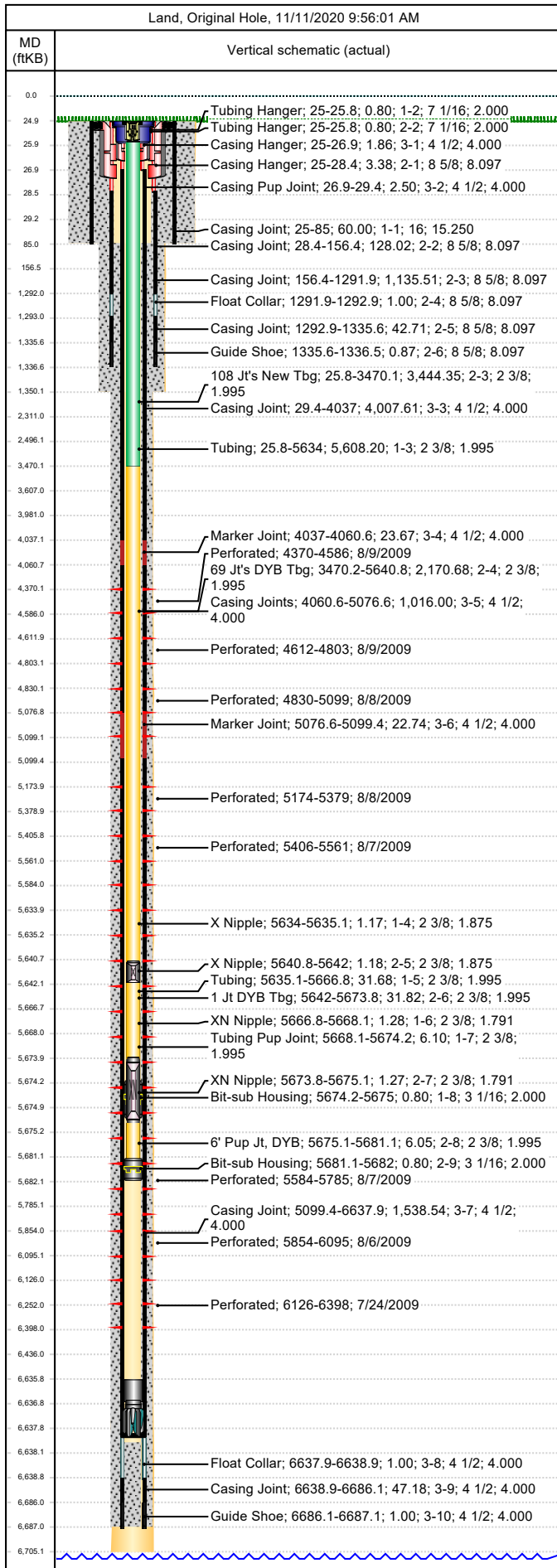


Job Details						
Job Category			Start Date		Rig/Unit End Date	
Major Rig Work Over (MRWO)			7/29/2014		8/5/2014	
Major Rig Work Over (MRWO)			8/5/2014		8/6/2014	
Casing Strings						
Csg Des	OD (in)	Wt/Len (lb/ft)	Grade	Top Thread	Set Depth (MD) (ftKB)	
Conductor	16	65.00	H-40		85	
Surface	8 5/8	24.00	K-55		1336.5	
Production Casing	4 1/2	11.60	N-80		6687.1	
Tubing Strings						
Tubing - Production set at 5,675.0ftKB on 11/18/2009 14:00						
Tubing Description			Run Date		String Length (ft)	Set Depth (MD) (ftKB)
Tubing - Production			11/18/2009		5,675.03	5,675.0
Item Des	Jts	OD (in)	Wt (lb/ft)	Grade	Len (ft)	Btm (ftKB)
KBGL					25.00	25.0
Tubing Hanger		7 1/16			0.80	25.8
Tubing	178	2 3/8	4.70	L-80	5,608.20	5,634.0
X Nipple		2 3/8			1.17	5,635.1
Tubing	1	2 3/8	4.70	L-80	31.68	5,666.8
XN Nipple		2 3/8			1.28	5,668.1
Tubing Pup Joint		2 3/8	4.70	L-80	6.10	5,674.2
Bit-sub Housing		3 1/16			0.80	5,675.0
Tubung Landed @						5,675.0
Tubing - Production set at 5,682.0ftKB on 8/5/2014 08:30						
Tubing Description			Run Date		String Length (ft)	Set Depth (MD) (ftKB)
Tubing - Production			8/5/2014		5,681.95	5,682.0
Item Des	Jts	OD (in)	Wt (lb/ft)	Grade	Len (ft)	Btm (ftKB)
KBGL					25.00	25.0
Tubing Hanger		7 1/16			0.80	25.8
108 Jt's New Tbg	108	2 3/8	4.70	L-80	3,444.35	3,470.1
69 Jt's DYB Tbg	69	2 3/8	4.70	L-80	2,170.68	5,640.8
X Nipple		2 3/8			1.18	5,642.0
1 Jt DYB Tbg	1	2 3/8	4.70	L-80	31.82	5,673.8
XN Nipple		2 3/8			1.27	5,675.1
6' Pup Jt, DYB		2 3/8	4.70	L-80	6.05	5,681.1
Bit-sub Housing		3 1/16			0.80	5,682.0
Tubung Landed @						5,682.0
Perforations						
Date	Top (ftKB)	Btm (ftKB)	Shot Dens (shots/ft)	Entered Shot Total	Linked Zone	
8/9/2009	4,370.0	4,586.0	3.0	30	Mesa Verde - WMFK - Williams Fork, Original Hole	
8/9/2009	4,612.0	4,803.0	3.0	27	Mesa Verde - WMFK - Williams Fork, Original Hole	
8/8/2009	4,830.0	5,099.0	3.0	33	Mesa Verde - WMFK - Williams Fork, Original Hole	
8/8/2009	5,174.0	5,379.0	3.0	30	Mesa Verde - WMFK - Williams Fork, Original Hole	
8/7/2009	5,406.0	5,561.0	3.0	24	Mesa Verde - WMFK - Williams Fork, Original Hole	
8/7/2009	5,584.0	5,785.0	3.0	30	Mesa Verde - WMFK - Williams Fork, Original Hole	
8/6/2009	5,854.0	6,095.0	3.0	30	Mesa Verde - WMFK - Williams Fork, Original Hole	
7/24/2009	6,126.0	6,398.0	3.0	27	Mesa Verde - WMFK - Cameo Coal, Original Hole	
Other Strings						
Run Date	Pull Date	Set Depth (ftKB)	Com			
Other In Hole						
Des	Top (ftKB)	Btm (ftKB)	Run Date	Pull Date	Com	
Bear Claw Solid Plug	4,339.0	4,341.0	8/17/2009	11/17/2009	Solid composite, bridge plug.	
Bear Claw Frac Plug	4,600.0	4,601.0	8/9/2009	11/17/2009	Bio Ball composite, flow thru, frac, bridge plug	



# Wellbore Schematic

Well Name SKR-598-25-AV-03	Lease Chevron USA	Field Name Skinner Ridge	Business Unit Mid-Continent
-------------------------------	----------------------	-----------------------------	--------------------------------



Other In Hole					
Des	Top (ftKB)	Btm (ftKB)	Run Date	Pull Date	Com
Bear Claw Frac Plug	4,817.0	4,818.0	8/9/2009	11/17/2009	Bio Ball composite, flow thru, frac, bridge plug
Bear Claw Frac Plug	5,130.0	5,131.0	8/8/2009	11/17/2009	Bio Ball composite, flow thru, frac, bridge plug
Fish Top	5,390.0	5,391.0	7/31/2014	8/1/2014	
Bear Claw Frac Plug	5,393.0	5,394.0	8/8/2009	11/17/2009	Bio Ball composite, flow thru, frac, bridge plug
Bear Claw Frac Plug	5,575.0	5,576.0	8/7/2009	11/17/2009	Bio Ball composite, flow thru, frac, bridge plug
Tubing Plunger	5,631.8	5,632.8	1/24/2011	3/7/2013	
Bumper Spring	5,632.8	5,633.8	1/24/2011	3/7/2013	
Bear Claw Frac Plug	5,819.0	5,820.0	8/7/2009	11/17/2009	Bio Ball composite, flow thru, frac, bridge plug
Fill, 3/7/2013	5,889.0	6,303.0	3/7/2013	8/4/2014	
Bear Claw Frac Plug	6,110.0	6,111.0	8/6/2009	11/17/2009	Bio Ball composite, flow thru, frac, bridge plug
Fill, 1/24/2011	6,303.0	6,305.0	1/24/2011	8/4/2014	Tag w/ slickline, 1/24/2011
Fill, 10/12/2010	6,305.0	6,635.9	10/12/2010	8/4/2014	Tag w/ slickline, 10/12/10
Pumped off	6,635.9	6,636.7	11/18/2009		
Mill	6,636.7	6,637.9	11/18/2009		