

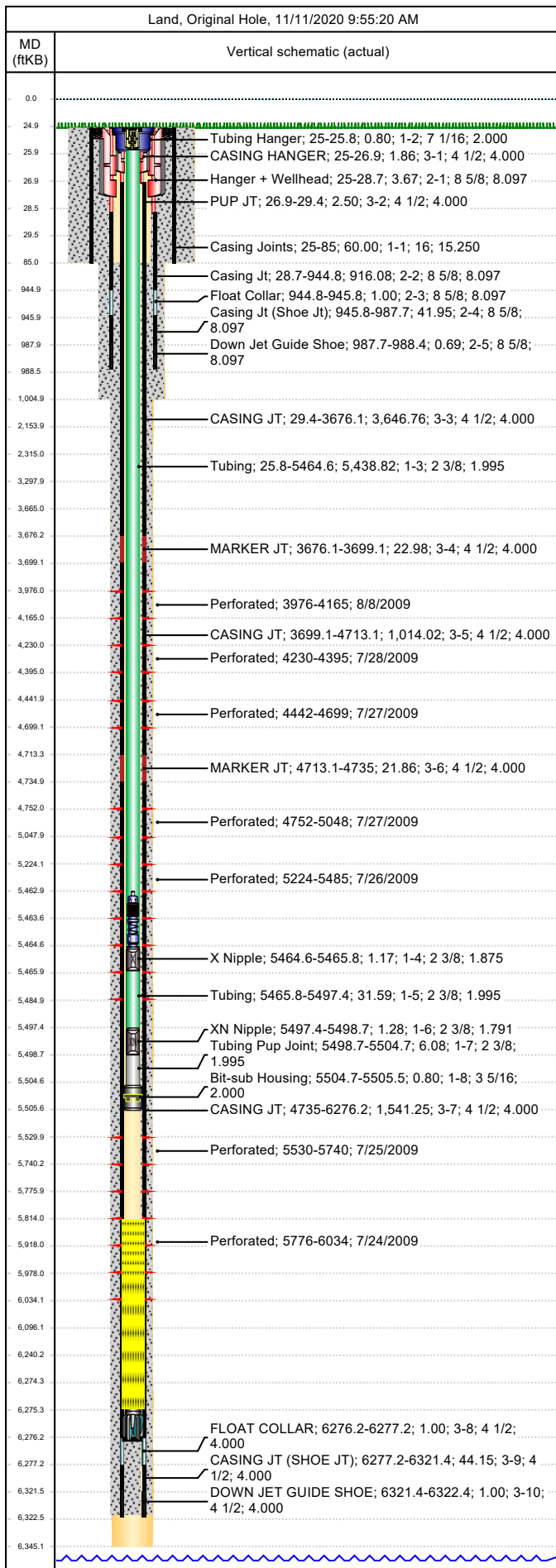


Job Details							
Job Category				Start Date		Rig/Unit End Date	
Well Services				2/9/2015		2/9/2015	
Casing Strings							
Csg Des	OD (in)	Wt/Len (lb/ft)	Grade	Top Thread	Set Depth (MD) (ftKB)		
Conductor	16	65.00	H-40		85		
Surface	8 5/8	24.00	K-55		988.4		
Production Casing	4 1/2	11.60	N-80		6322.4		
Tubing Strings							
Tubing - Production set at 5,505.5ftKB on 10/10/2009 14:00							
Tubing Description Tubing - Production			Run Date 10/10/2009		String Length (ft) 5,505.54		Set Depth (MD) (ftKB) 5,505.5
Item Des	Jts	OD (in)	Wt (lb/ft)	Grade	Len (ft)	Btm (ftKB)	
KBGL					25.00	25.0	
Tubing Hanger		7 1/16			0.80	25.8	
Tubing	172	2 3/8	4.70	L-80	5,438.82	5,464.6	
X Nipple		2 3/8			1.17	5,465.8	
Tubing	1	2 3/8	4.70	L-80	31.59	5,497.4	
XN Nipple		2 3/8			1.28	5,498.7	
Tubing Pup Joint		2 3/8		L-80	6.08	5,504.7	
Bit-sub Housing		3 5/16			0.80	5,505.5	
Tubing Landed @						5,505.5	
Perforations							
Date	Top (ftKB)	Btm (ftKB)	Shot Dens (shots/ft)	Entered Shot Total	Linked Zone		
8/8/2009	3,976.0	4,165.0	3.0	30	Mesa Verde - Williams Fork - WMFK, Original Hole		
7/28/2009	4,230.0	4,395.0	3.0	27	Mesa Verde - Williams Fork - WMFK, Original Hole		
7/27/2009	4,442.0	4,699.0	3.0	30	Mesa Verde - Williams Fork - WMFK, Original Hole		
7/27/2009	4,752.0	5,048.0	3.0	30	Mesa Verde - Williams Fork - WMFK, Original Hole		
7/26/2009	5,224.0	5,485.0	3.0	30	Mesa Verde - Williams Fork - WMFK, Original Hole		
7/25/2009	5,530.0	5,740.0	3.0	30	Mesa Verde - Williams Fork - WMFK, Original Hole		
7/24/2009	5,776.0	6,034.0	3.0	30	Mesa Verde - Cameo Coal - CMEOC, Original Hole		
Other Strings							
Run Date	Pull Date	Set Depth (ftKB)	Com				
Other In Hole							
Des	Top (ftKB)	Btm (ftKB)	Run Date	Pull Date	Com		
Bear Claw Solid Plug	3,945.0	3,947.0	8/17/2009	10/8/2009	Solid composite, bridge plug.		
Bear Claw Frac Plug	4,197.0	4,198.0	8/8/2009	10/8/2009	Bio Ball composite, flow thru, frac, bridge plug		
Bear Claw Frac Plug	4,418.0	4,421.0	7/28/2009	10/8/2009	Bio Ball composite, flow thru, frac, bridge plug		
Bear Claw Frac Plug	4,725.0	4,727.0	7/27/2009	10/8/2009	Bio Ball composite, flow thru, frac, bridge plug		
Bear Claw Frac Plug	5,139.0	5,141.0	7/27/2009	10/8/2009	Bio Ball composite, flow thru, frac, bridge plug		
Tubing Plunger	5,462.9	5,463.5	2/9/2015		Operator re-ran assembly after tag run		
Bumper Spring	5,463.5	5,464.6	2/9/2015		Operator re-ran assembly after tag run		
Bear Claw Frac Plug	5,507.0	5,509.0	7/26/2009	10/9/2009	Bio Ball composite, flow thru, frac, bridge plug		
Bear Claw Frac Plug	5,757.0	5,759.0	7/25/2009	10/9/2009	Bio Ball composite, flow thru, frac, bridge plug		
Fill (Sand / Mud / Debris)	5,814.0	5,978.0	8/29/2013		Tag w/ slickline 2/09/2015		
Fill (Sand / Mud / Debris)	5,978.0	6,275.1	4/28/2010		Tag w/ slickline 4/28/10		



# Wellbore Schematic

Well Name SKR-598-25-AV-02	Lease Chevron USA	Field Name Skinner Ridge	Business Unit Mid-Continent
-------------------------------	----------------------	-----------------------------	--------------------------------



Other In Hole					
Des	Top (ftKB)	Btm (ftKB)	Run Date	Pull Date	Com
Pumped Off Bit-sub	6,274.3	6,275.1	10/10/2009		
Mill	6,275.1	6,276.3	10/10/2009		