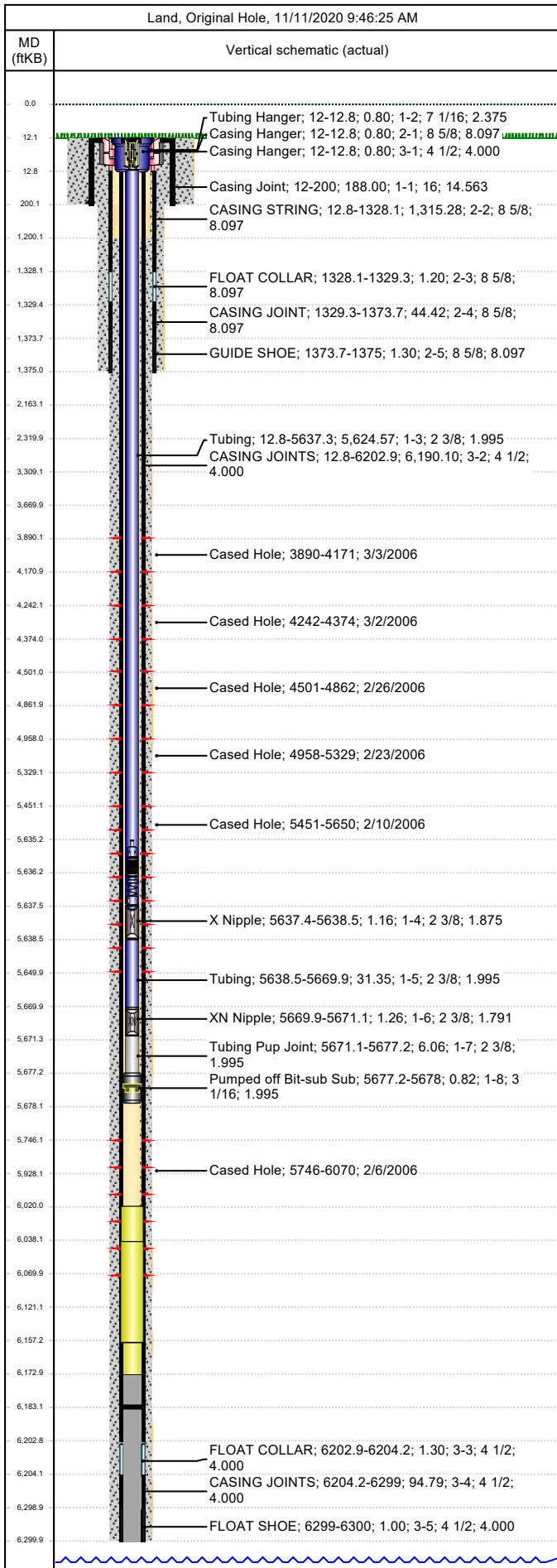




Wellbore Schematic

Well Name Skinner Ridge 598-25-04	Lease Chevron USA	Field Name Skinner Ridge	Business Unit Mid-Continent
--------------------------------------	----------------------	-----------------------------	--------------------------------



Job Details							
Job Category				Start Date		Rig/Unit End Date	
Well Services				4/23/2014		4/23/2014	
Casing Strings							
Csg Des	OD (in)	Wt/Len (lb/ft)	Grade	Top Thread	Set Depth (MD) (ftKB)		
Conductor	16				200		
Surface	8 5/8	24.00	K55	8RD	1375		
Production Casing	4 1/2	11.60	P-110	8RD	6300		
Tubing Strings							
LONG TUBING set at 5,678.0ftKB on 3/25/2006 00:00							
Tubing Description			Run Date		String Length (ft)		Set Depth (MD) (ftKB)
LONG TUBING			3/25/2006		5,678.02		5,678.0
Item Des		Jts	OD (in)	Wt (lb/ft)	Grade	Len (ft)	Btm (ftKB)
KB To Hanger						12.00	12.0
Tubing Hanger		1	7 1/16			0.80	12.8
Tubing		181	2 3/8	4.70	L-80	5,624.57	5,637.4
X Nipple		1	2 3/8			1.16	5,638.5
Tubing		1	2 3/8	4.70	L-80	31.35	5,669.9
XN Nipple		1	2 3/8			1.26	5,671.1
Tubing Pup Joint		1	2 3/8			6.06	5,677.2
Pumped off Bit-sub Sub		1	3 1/16			0.82	5,678.0
Tubing Landed @							5,678.0
Perforations							
Date	Top (ftKB)	Btm (ftKB)	Shot Dens (shots/ft)	Entered Shot Total	Linked Zone		
3/3/2006	3,890.0	4,171.0			Mesa Verde - WMFK - Williams Fork, Original Hole		
3/2/2006	4,242.0	4,374.0			Mesa Verde - WMFK - Williams Fork, Original Hole		
2/26/2006	4,501.0	4,862.0			Mesa Verde - WMFK - Williams Fork, Original Hole		
2/23/2006	4,958.0	5,329.0			Mesa Verde - WMFK - Williams Fork, Original Hole		
2/10/2006	5,451.0	5,650.0			Mesa Verde - WMFK - Williams Fork, Original Hole		
2/6/2006	5,746.0	6,070.0			Mesa Verde - WMFK - Cameo Coal, Original Hole		
Other Strings							
Run Date	Pull Date	Set Depth (ftKB)		Com			
Other In Hole							
Des	Top (ftKB)	Btm (ftKB)	Run Date	Pull Date	Com		
Tubing Plunger	5,635.1	5,636.3	4/23/2014				
Bumper Spring	5,636.3	5,637.5	6/17/2011	4/23/2014	Slickline broached tbgr. - Tag fill @ 6038' - Drop new bumper spring.		
Bumper Spring, 4/23/2014	5,636.3	5,637.5	4/23/2014		Dropped BS & plunger		
Fill tag, 4/23/2014	6,020.0	6,038.0	4/23/2014				
Fill (Sand / Mud / Debris)	6,028.0		6/13/2019		Slickline Work		
Fill tag, 6/17/2011	6,038.0	6,157.0	6/17/2011				
Fill, 6/5/2006	6,157.0	6,173.0					
PBTD	6,173.0	6,300.0					