



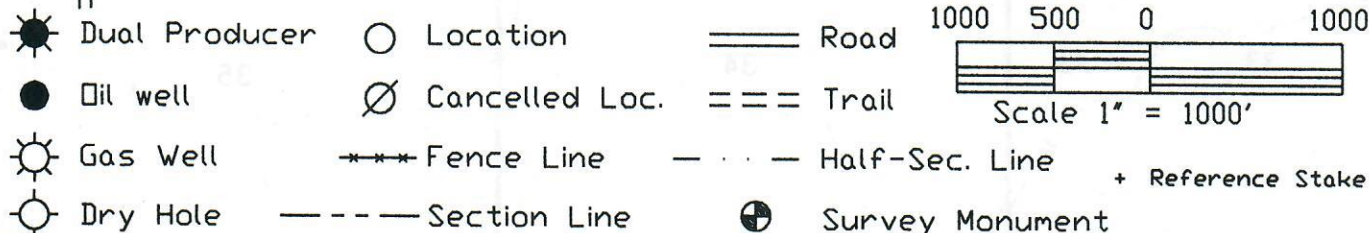
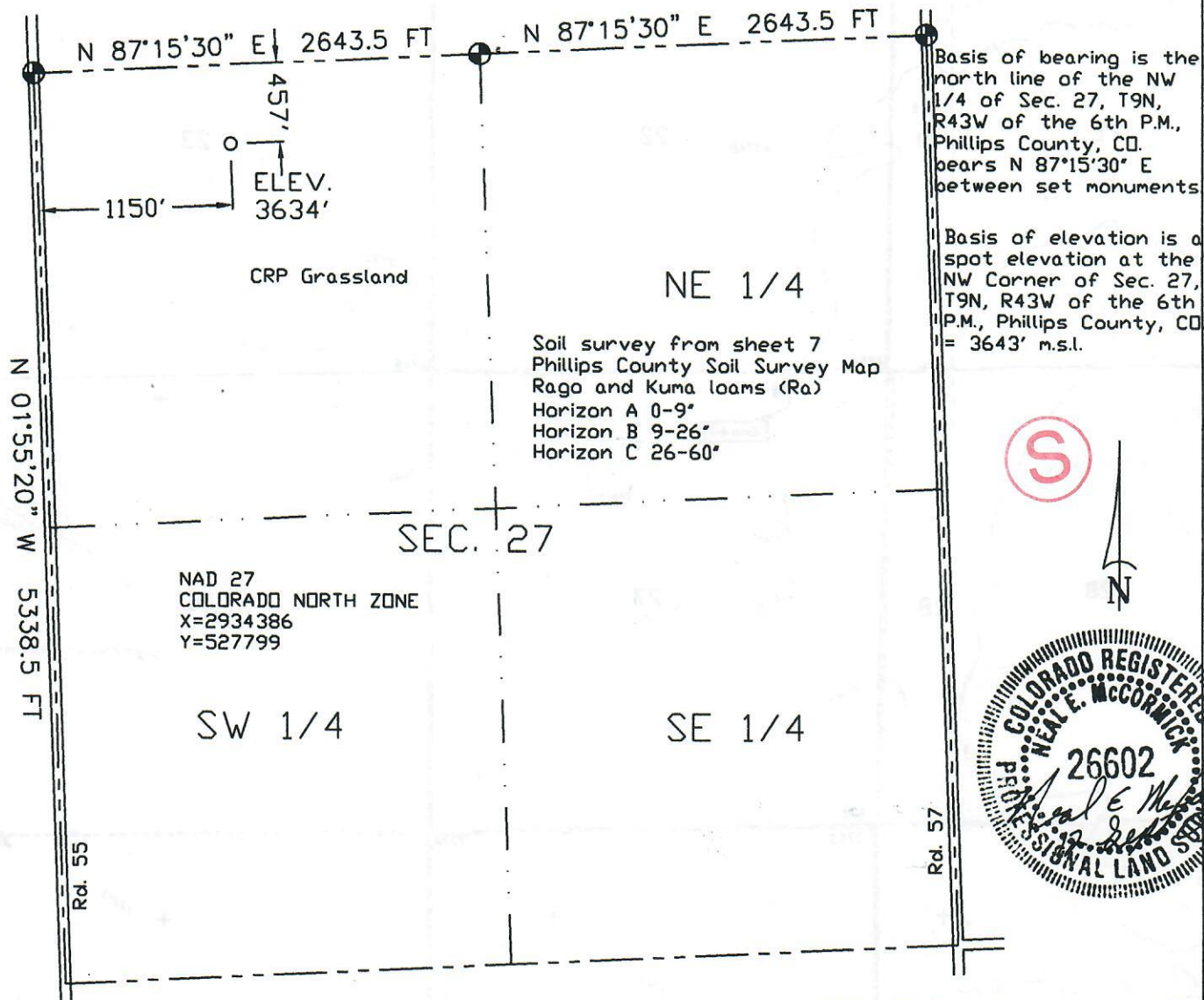
01203641

The accompanying plat is an accurate representation showing the location of a proposed well. This location may be described as a point 457 feet South of the North line, and 1150 feet East of the West line of Section 27, Township 9 North, Range 43 West of the 6th P.M., Phillips County, Colorado.

The surface elevation at this point is 3634 feet m.s.l.

Note: This is not a land survey plat.

There are no visible improvements within 200 feet of the location.



GREAT PLAINS SURVEYING

OLSON 4-27

NW 1/4 NW 1/4 SEC. 27, T9N, R43W

LANCE OIL & GAS COMPANY, INC.

PHILLIPS COUNTY, CO 12 SEPTEMBER 2003

P.O. Box 296

Holyoke, CO 80734

Phone 970-854-3602

Fax 970-854-2926

W279N43GPS

1163/53

1420-105