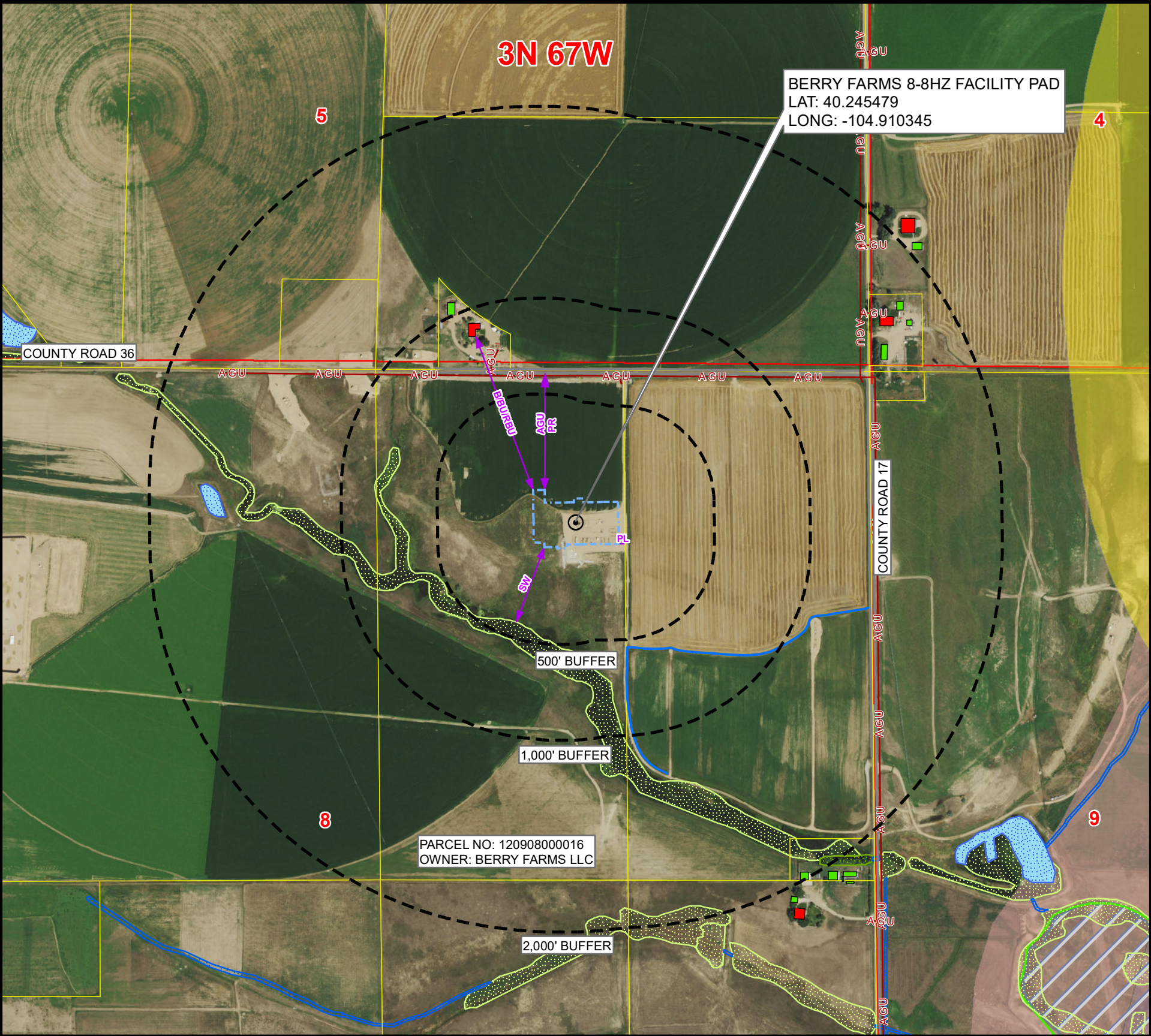


K:\ANADARKO\2020\2020_11_BERRY_FARMS_T3N_R67W_SEC_8\GIS\FORM 2\BERRY_FARMS_ALA_CULTURAL_FEATURES_MAP_FAC_PAD.mxd 12/1/2021 11:42:24 AM

CULTURAL FEATURES MAP

BERRY FARMS 8-8HZ FACILITY PAD

SECTION 8, TOWNSHIP 3 NORTH, RANGE 67 WEST, 6TH P.M., WELD COUNTY, COLORADO



| # OF CULTURAL FEATURES WITHIN | 0-500 FEET | 501-1,000 FEET | 1,001-2,000 FEET |
|----------------------------------|------------|----------------|------------------|
| BUILDING UNIT | 0 | 1 | 1 |
| RESIDENTIAL BUILDING UNIT | 0 | 1 | 1 |
| HIGH OCCUPANCY BUILDING UNIT | 0 | 0 | 0 |
| SCHOOL PROPERTY | 0 | 0 | 0 |
| SCHOOL FACILITY | 0 | 0 | 0 |
| DESIGNATED OUTSIDE ACTIVITY AREA | 0 | 0 | 0 |

NOTE:
THIS MAP IS A COMPILATION OF PUBLICLY AVAILABLE DATA. THE ACCURACY AND COMPLETENESS OF SAID DATA HAS NOT BEEN VERIFIED BY 609 CONSULTING, LLC. EXISTING CONDITIONS MAY DIFFER FROM WHAT IS SHOWN.

Legend

- PROPOSED REFERENCE POINT

PROPOSED WORKING PAD SURFACE

BUFFER

BUILDING

NON-RESIDENTIAL BUILDING UNIT

RESIDENTIAL BUILDING UNIT

HEALTH FACILITY

SCHOOL FACILITY

CHILD CARE FACILITY

ABOVE GROUND UTILITY

PUBLIC ROAD

RAILROAD

DITCH/CANAL/DRAINAGE
- RIPARIAN CORRIDOR

RIVERINE CORRIDOR

FRESHWATER EMERGENT WETLAND

FRESHWATER FORESTED/SHRUB WETLAND

OTHER WETLAND

LAKE

FRESHWATER POND

100-YEAR FLOODPLAIN (EFFECTIVE, 2016)

100-YEAR FLOODPLAIN (PRELIMINARY, 2020)

100-YEAR FLOODWAY (PRELIMINARY, 2020)

GUDI SOURCE LOCATIONS (RULE 411)

TYPE III WELL LOCATIONS (RULE 411)
- DISPROPORTIONATELY IMPACTED COMMUNITY

PARCEL BOUNDARY

MILLIKEN JURISDICTIONAL BOUNDARY

PLATTEVILLE JURISDICTIONAL BOUNDARY

AQUATIC NATIVE SPECIES CONSERVATION WATERS

MULE DEER SEVERE WINTER RANGE

MULE DEER MIGRATION CORRIDOR

BALD EAGLE ROOST SITE

BALD EAGLE ACTIVE NEST SITE - QUARTER MILE BUFFER

BALD EAGLE ACTIVE NEST SITE - HALF MILE BUFFER

| MEASURED FROM THE NEAREST | | EDGE OF WORKING PAD |
|---------------------------|---|---------------------|
| B | BUILDING | ±854' N |
| BU | BUILDING UNIT | ±854' N |
| RBU | RESIDENTIAL BUILDING UNIT | ±854' N |
| HOBU | HIGH OCCUPANCY BUILDING UNIT | 2000'+ |
| DOAA | DESIGNATED OUTSIDE ACTIVITY AREA | 2000'+ |
| PR | PUBLIC ROAD | ±608' N |
| AGU | ABOVE GROUND UTILITY | ±596' N |
| RR | RAILROAD | 2000'+ |
| PL | PROPERTY LINE | ±31' E |
| S | SCHOOL FACILITY | 2000'+ |
| CC | CHILD CARE CENTER | 2000'+ |
| DIC | DISPROPORTIONATELY IMPACTED COMMUNITY BOUNDARY | 2000'+ |
| MB | MUNICIPALITY BOUNDARY | 2000'+ |
| CB | COUNTY BOUNDARY | 2000'+ |
| SW | SURFACE WATER | ±417' SW |
| PWS | PUBLIC WATER SYSTEM SUPPLY WELL | 2000'+ |
| HPH | HIGH PRIORITY HABITAT | 2000'+ |
| RHSD | RBU, HOBU, OR SCHOOL FACILITY WITHIN A DI COMMUNITY | 2000'+ |

Kerr-McGee Oil & Gas Onshore L.P.

1099 18th Street

Denver, Colorado 80202



LOVELAND OFFICE

6706 North Franklin Avenue

Loveland, Colorado 80538

Phone 970-776-4331

SHERIDAN OFFICE

1095 Saberton Avenue

Sheridan, Wyoming 82801

Phone 307-674-0609

Drawn by: BB

Revised: SP

Date: 20 Oct 2021

Date: 3 Dec 2021



NAD83 CO-Nft

Scale: 1" = 600ft