

FACILITY PAD LOCATION PICTURES
BERRY FARMS 8-8HZ FACILITY PAD

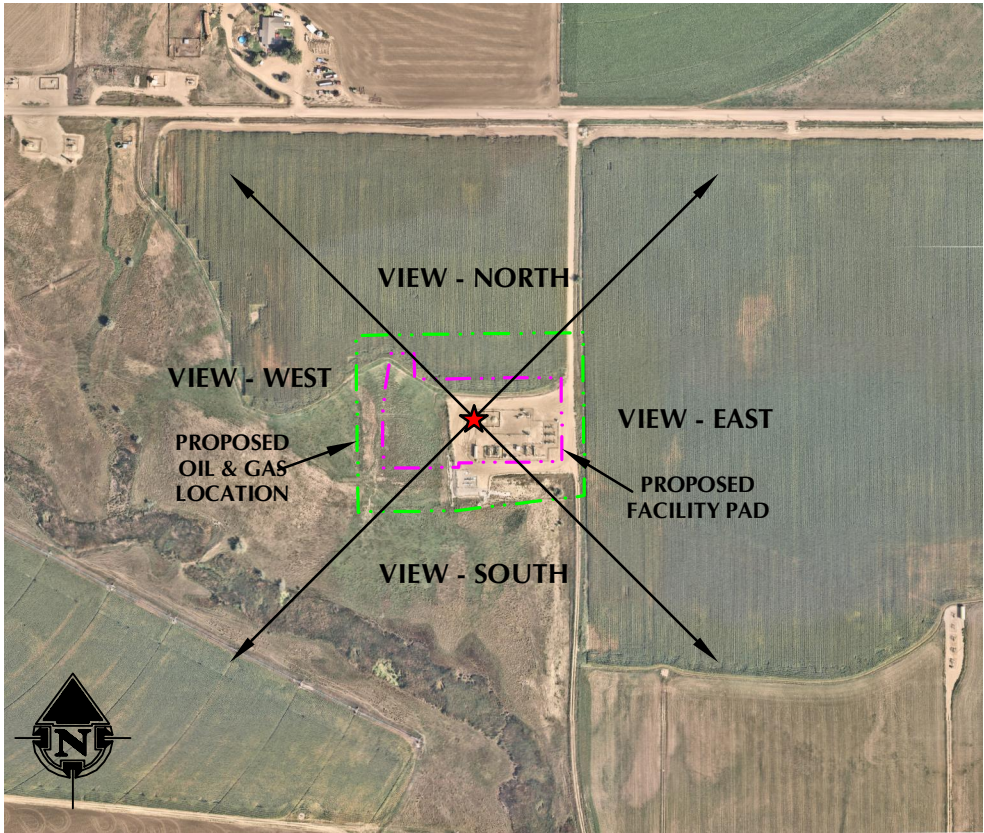
N1/2 NE1/4 SECTION 8, TOWNSHIP 3 NORTH, RANGE 67 WEST, 6TH P.M., WELD COUNTY, COLORADO



LOCATION PICTURE OF BERRY FARMS 8-8HZ FACILITY PAD - CAMERA VIEW NORTH



LOCATION PICTURE OF BERRY FARMS 8-8HZ FACILITY PAD - CAMERA VIEW SOUTH



VIEW - OVERHEAD
AERIAL IMAGERY COURTESY OF NEARMAP
2021-09-11



LOCATION PICTURE OF BERRY FARMS 8-8HZ FACILITY PAD - CAMERA VIEW EAST



LOCATION PICTURE OF BERRY FARMS 8-8HZ FACILITY PAD - CAMERA VIEW WEST

K:\ANADARKO\2020\2020_11_BERRY_FARMS_TN_167N_167E_8TH_P.M._WELD_CO_COLORADO\DWG\BERRY_FARMS.dwg, 12/8/2021 8:38:14 AM, seven



LOVELAND OFFICE
6706 North Franklin Avenue
Loveland, Colorado 80538
Phone 970-776-4331

SHERIDAN OFFICE
1095 Saberton Avenue
Sheridan, Wyoming 82801
Phone 307-674-0609

CONSULTING, LLC

**Kerr-McGee Oil &
Gas Onshore L.P.**

1099 18th Street
Denver, Colorado 80202

DATE SURVEYED: 12/4/2020
DATE: 12/3/21
DRAFTER: GLK
REVISED:

DATA SOURCES:
-AERIAL IMAGERY COURTESY OF NEARMAP.