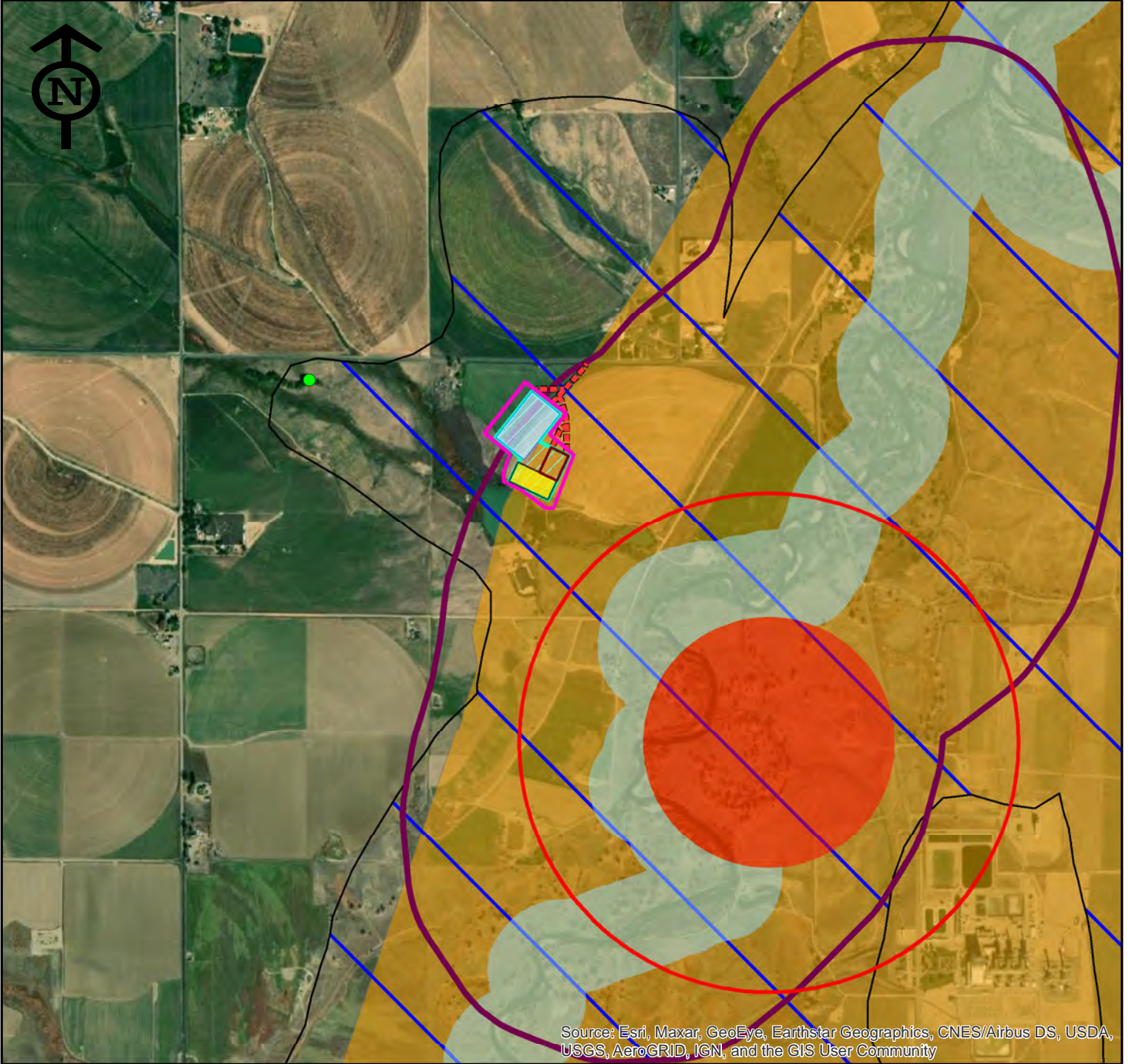


(602-90) Swartz 2-4HZ Refresh Preliminary Survey

SECTION 4, TOWNSHIP 3N, RANGE 67W, 6TH P.M. WELD COUNTY, CO

Map Location: X:\APC\602 Preliminary\602-90 Swartz Preliminary Survey\602-90 Refresh\Maps\COGCC\602-90 Swartz 3-4HZ High Priority Habitat 211103.mxd



Source: Esri, Maxar, GeoEye, Earthstar Geographics, CNES/Airbus DS, USDA, USGS, AeroGRID, IGN, and the GIS User Community

- | | |
|------------------------------|---|
| Temporary Equipment Pad Area | Bald Eagle Active Nest Site - Half Mile Buffer |
| Working Pad Surface | Bald Eagle Roost - Quarter Mile Buffer |
| Production Facility | Aquatic Native Species Conservation Water |
| Multi Well Pad | Bald Eagle Active Nest Site - Quarter Mile Buffer |
| Disturbance Area | Mule Deer Migration Corridor |
| Raptor Nest | Mule Deer Severe Winter Range |
| Access Road | |

PREPARED BY:



7674 Grandview Ave., Ste. 210
Arvada, CO 80002

0 1,500
Feet

SOURCES:
Project Features, 2DOT 2021
and Kerr-McGee 2021.
Source Data Updated: 2/2021

PREPARED FOR:



Projection: Nad83 UTM 13N Date: 11/12/2021
Drafted By: MC Reviewed By: MC

High Priority Habitat Map
Figure 1