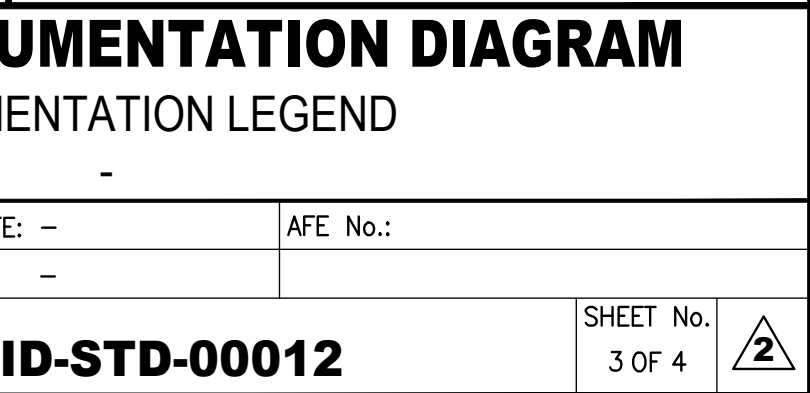
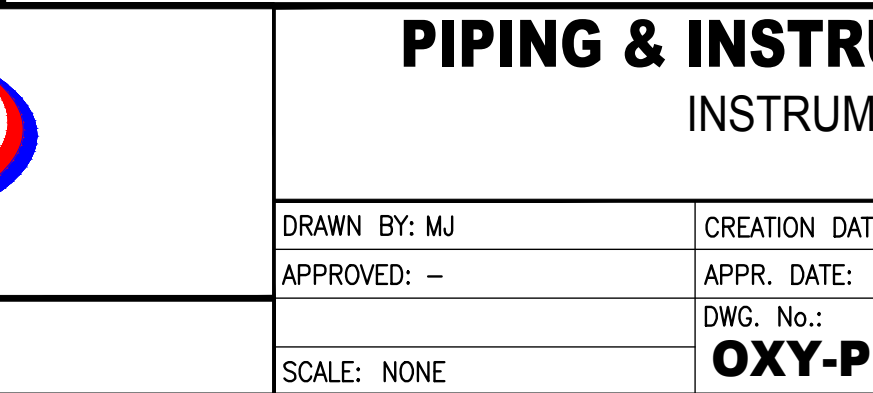
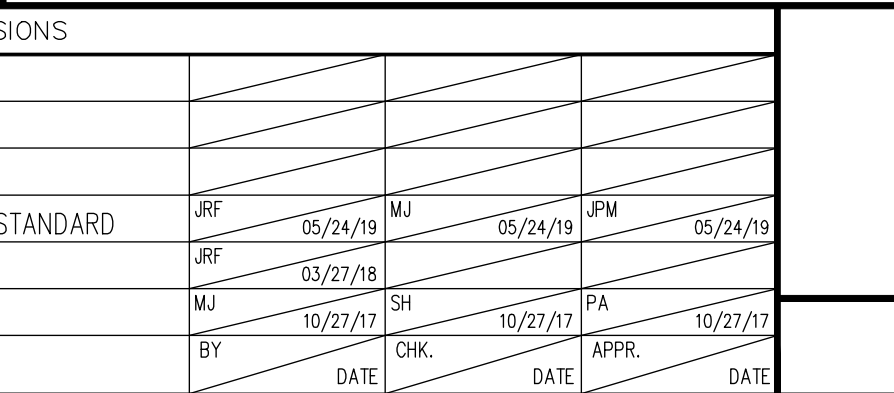
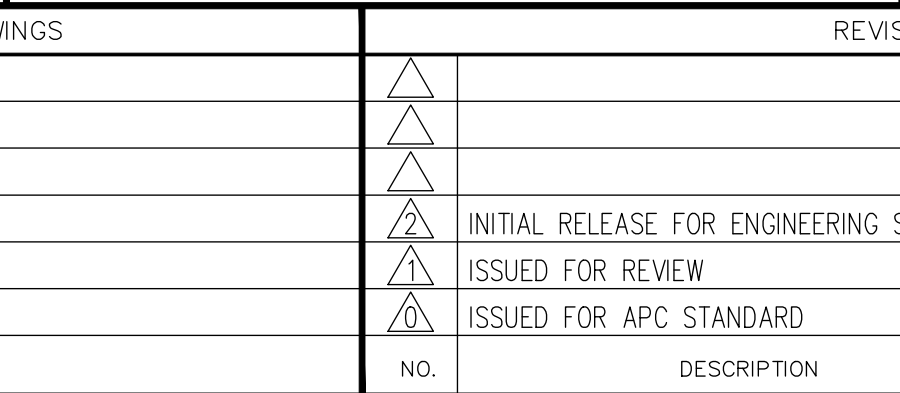
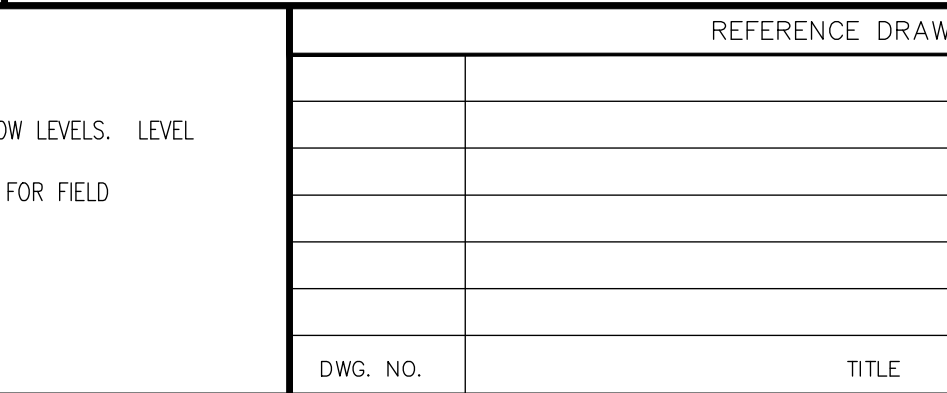
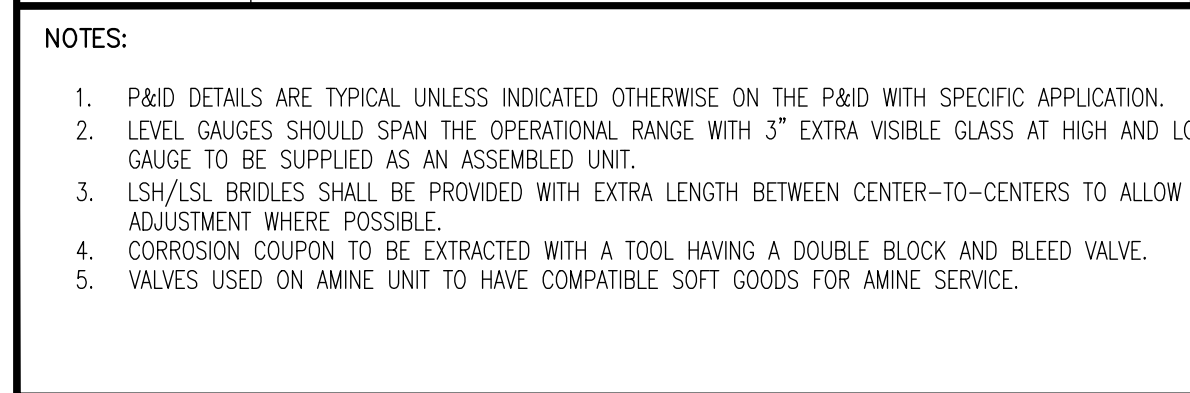
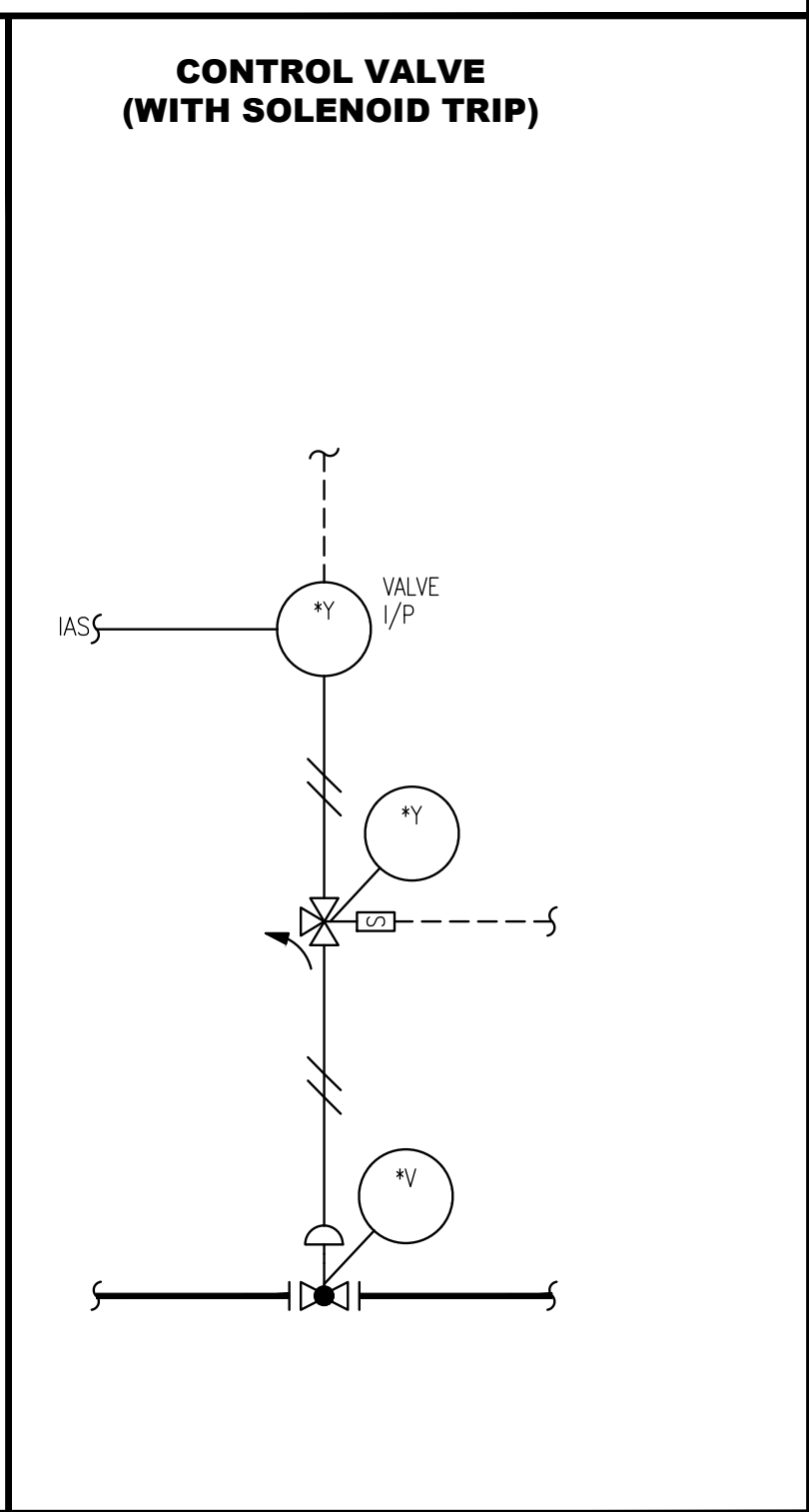
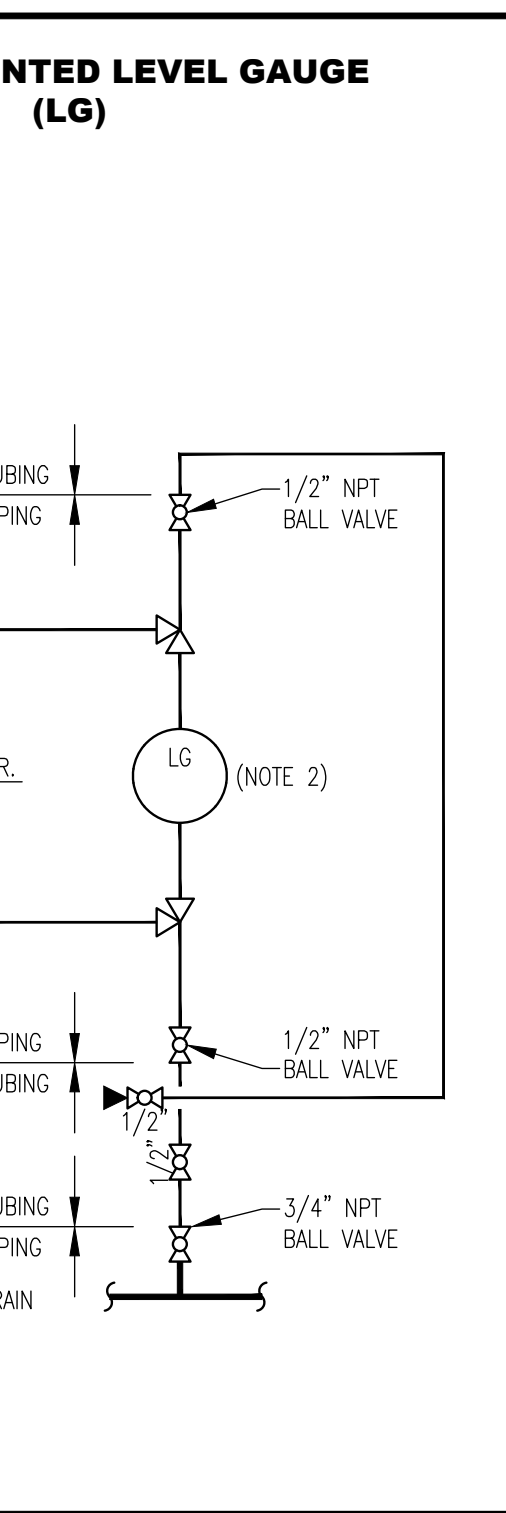
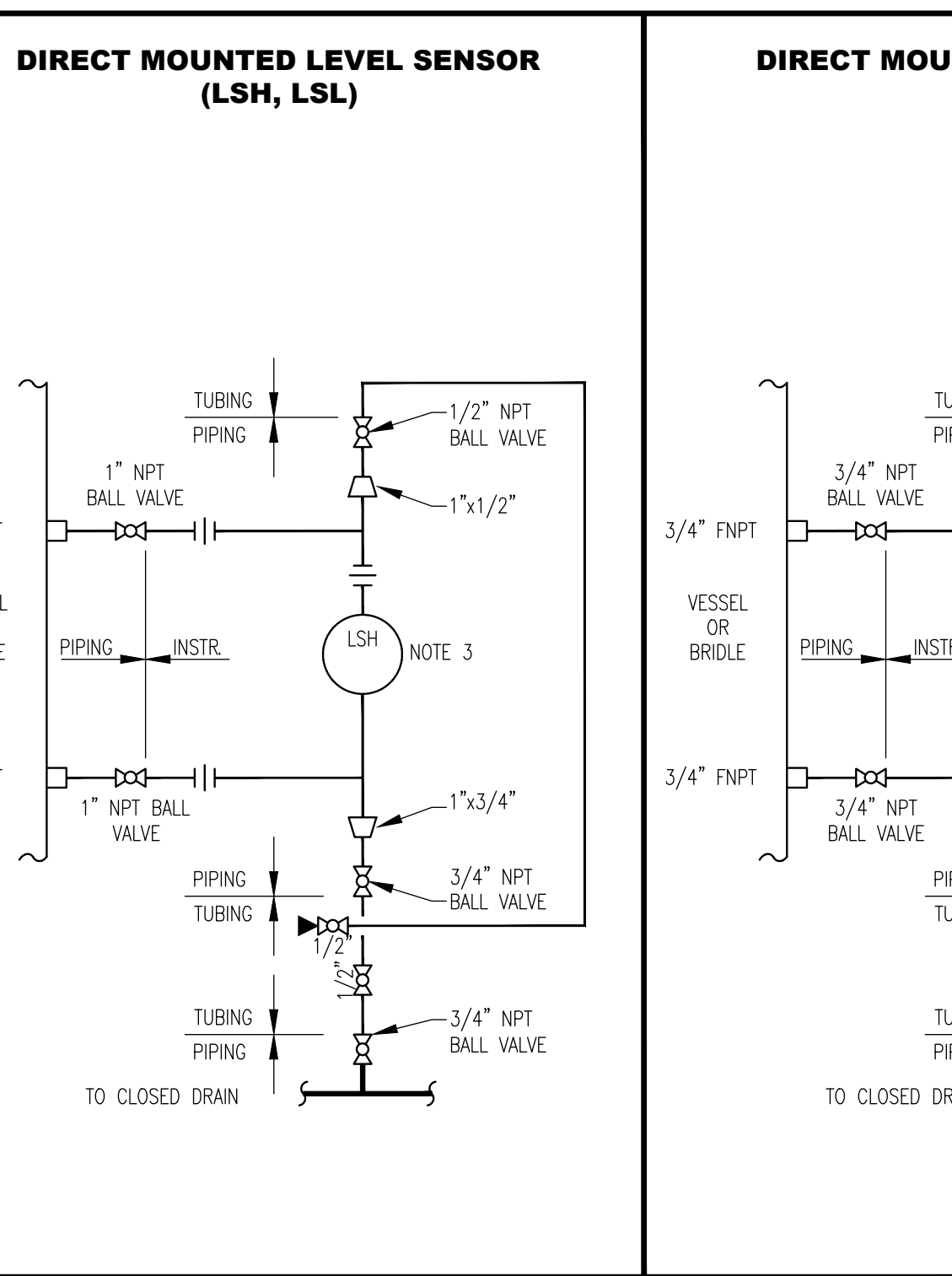
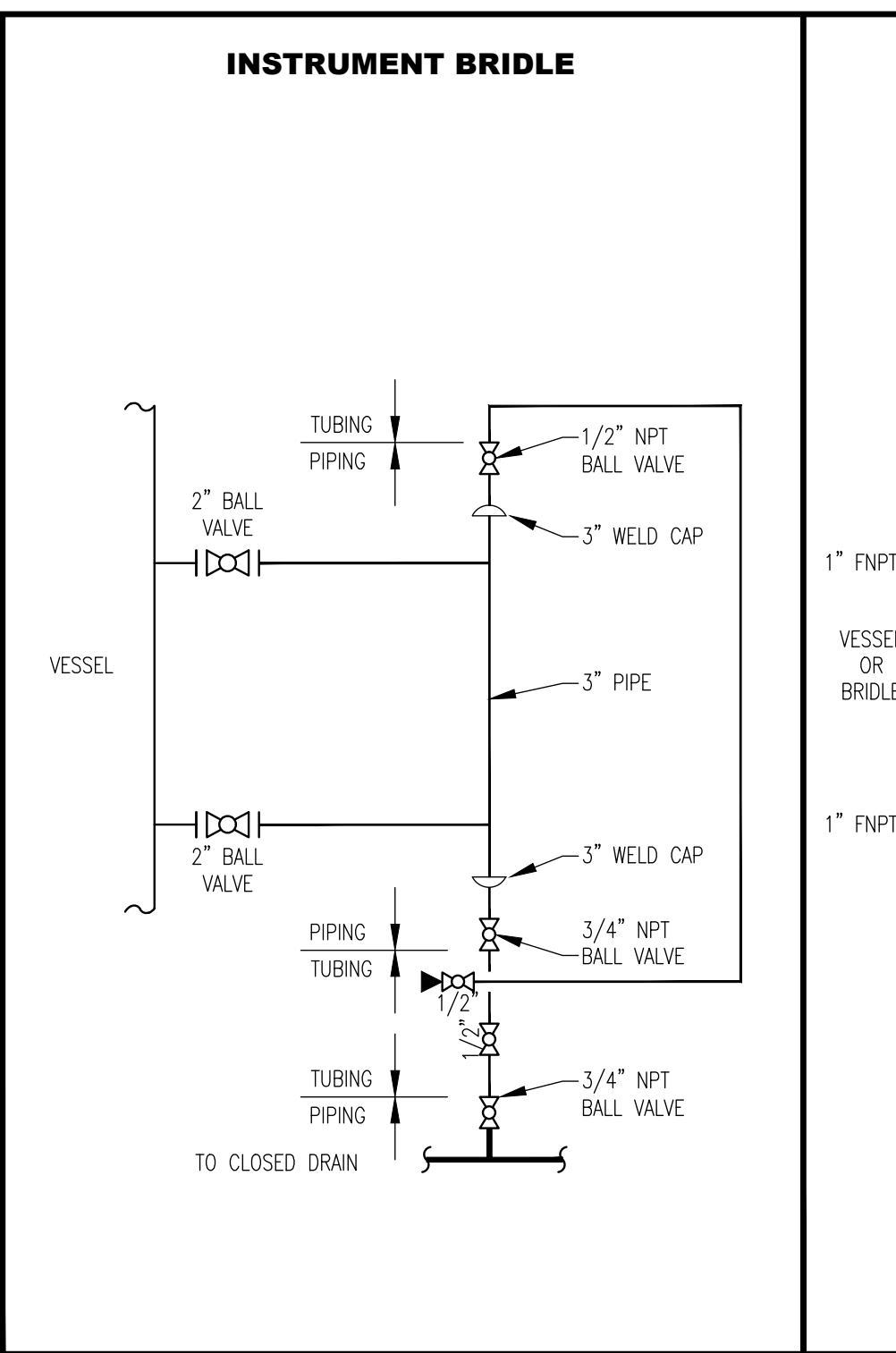
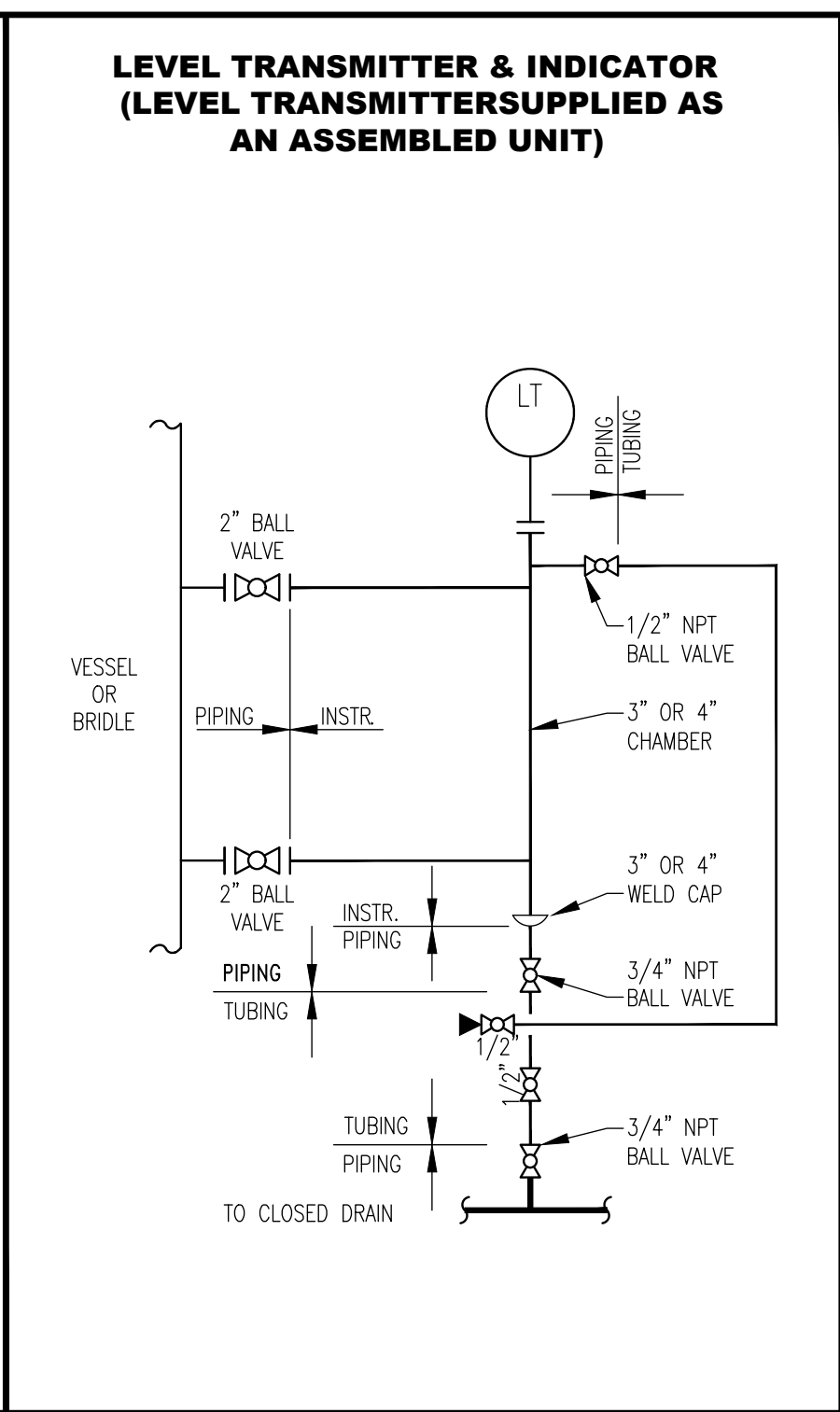
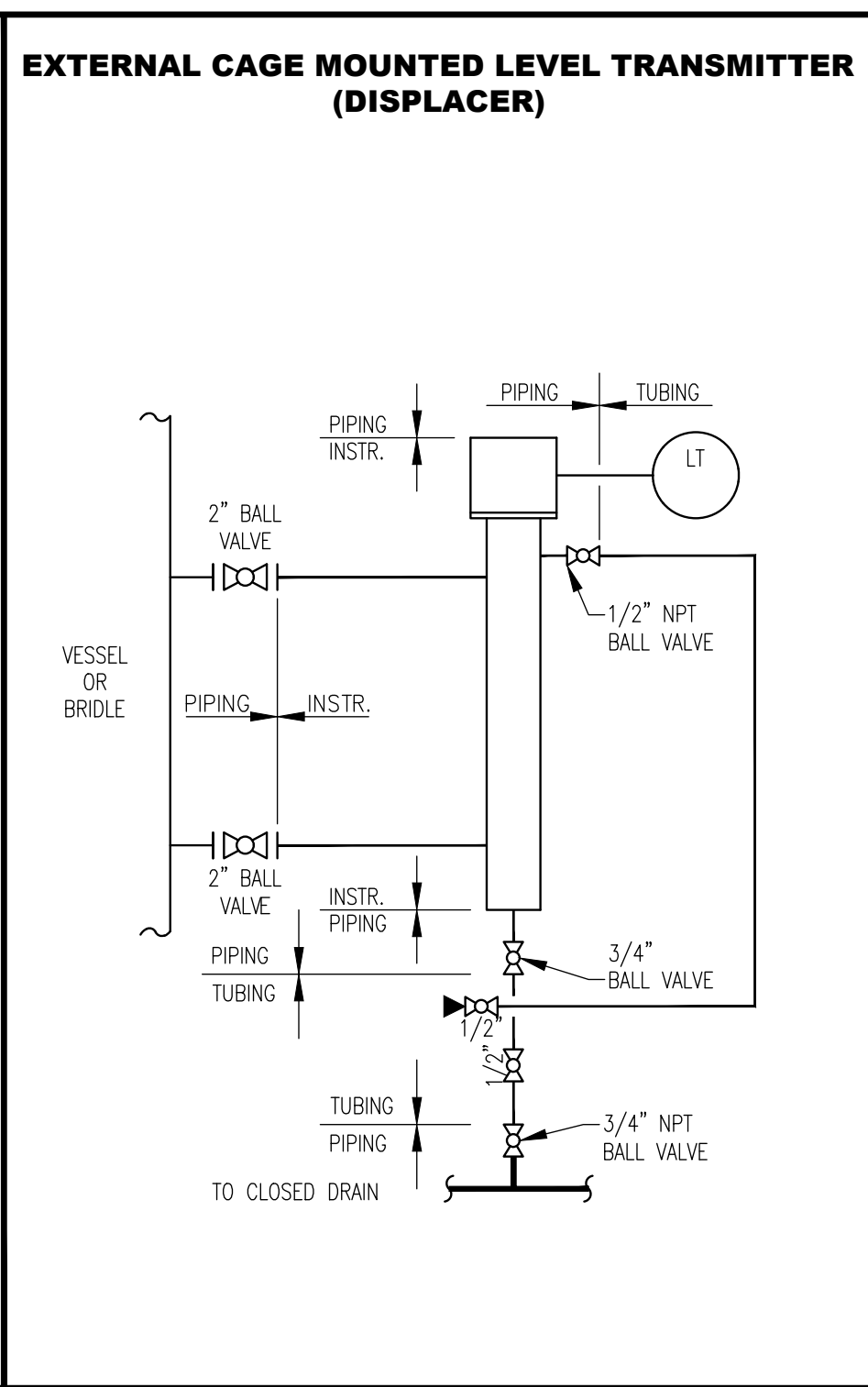
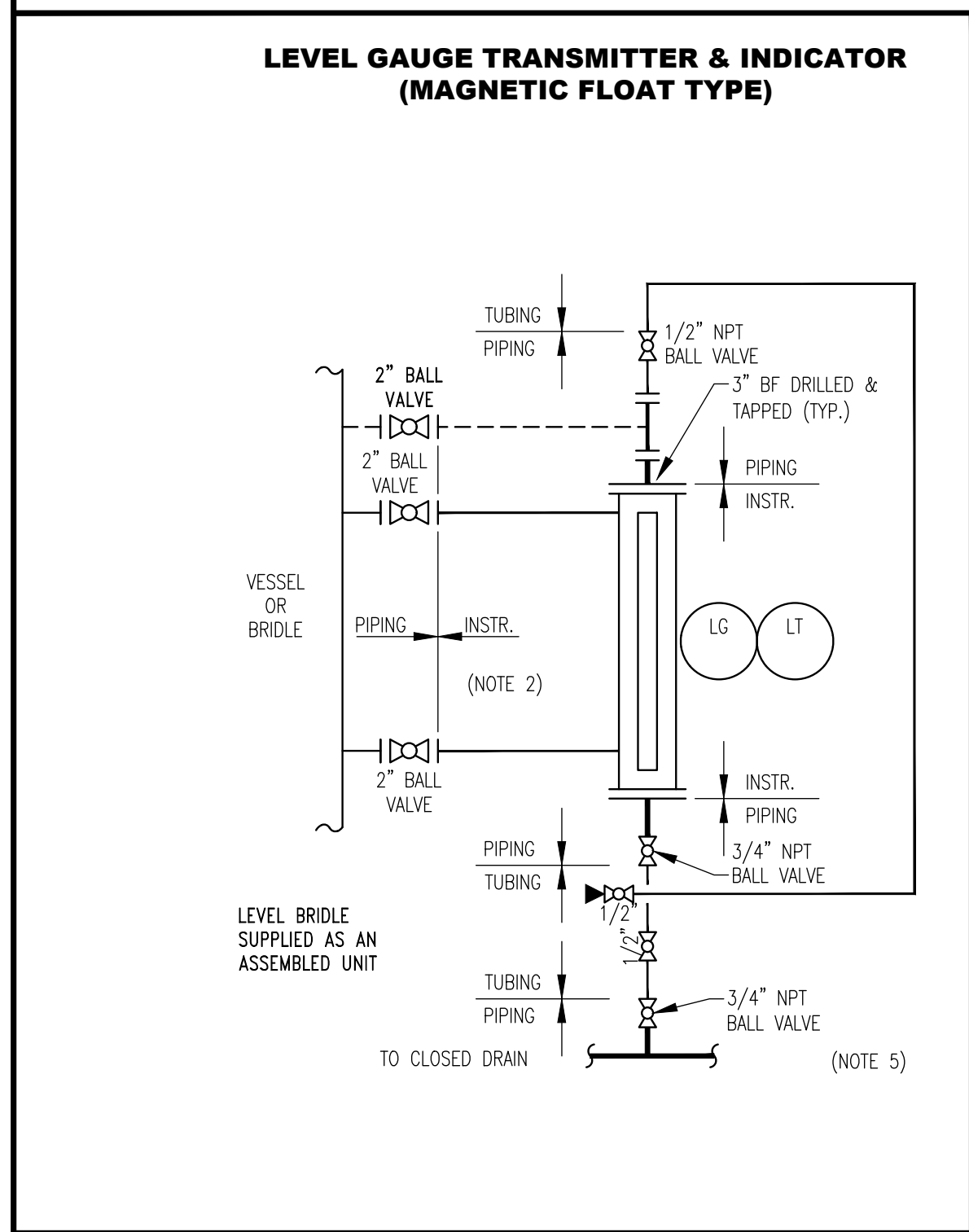


THIS DRAWING AND THE DESIGN IT COVERS ARE CONFIDENTIAL AND REMAIN THE PROPERTY OF ANADARKO PETROLEUM CORPORATION AND SHALL NOT BE DISCLOSED TO OTHERS OR REPRODUCED IN ANY MANNER OR USED FOR ANY PURPOSE WITHOUT THE WRITTEN PERMISSION BY THE OWNER.

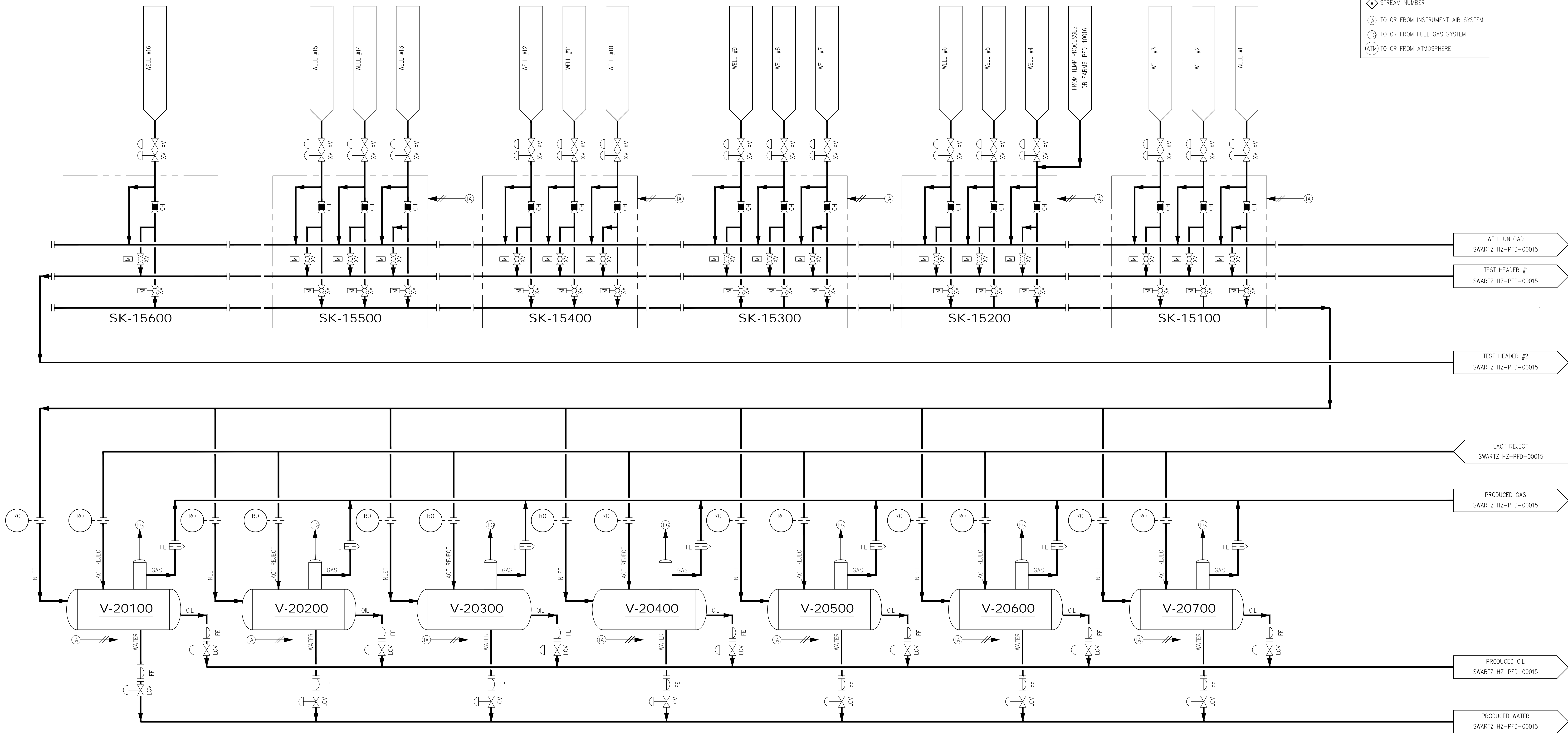
TANKS	VESSELS		EXCHANGERS		PUMPS	
FLAT ROOF	VERTICAL VESSEL	VERTICAL VESSEL WITH SKIRT	EXCHANGER - DOUBLE END		PUMP - VERTICAL (Y AXIS)	
			EXCHANGER - SINGLE END		PUMP - CENTRIFUGAL (Y AXIS)	
SLOPING ROOF	VERTICAL VESSEL WITH CONE	VERTICAL VESSEL WITH SKIRT & CONE	EXCHANGER - DOUBLE END KETTLE		PUMP - DUAL	
			EXCHANGER - SINGLE END KETTLE		PUMP - INLINE (Y AXIS)	
FLOATING ROOF	VERTICAL FLAT BOTTOM VESSEL	HORIZONTAL VESSEL	EXCHANGER - SUPER		PUMP - ROTARY	
			EXCHANGER - PROCESS FLOW		PUMP - VACUUM	
	HORIZONTAL VESSEL WITH ECCENTRIC	CENTRIFUGAL COMPRESSOR	LEAN/RICH AMINE EXCHANGER		PUMP - WITH STEAM TURBINE	
			FUEL GAS HEATER		PUMP - AIR OPERATED PUMP	
			AFTER COOLER WITH MOTOR		PUMP - DIAPHRAM	
					PULSATION DAMPENER	
					MOTOR	
					EQUIPMENT TAG	
					TAG DESC --- TAG	
NOTES:	REFERENCE DRAWINGS	REVISIONS	OXY Rockies		PIPING & INSTRUMENTATION DIAGRAM	
					EQUIPMENT LEGEND	
			OXY STANDARD		DRAWN BY: MJ	
					CREATION DATE: --	
					APPROVED: --	
					APPR. DATE: --	
					SCALE: NONE	
					DWG. No.: OXY-PID-STD-00011	
					SHEET No. 2 OF 4	
					3	



OXY STANDARD

FILE LOCATION: L:\SharedData\Denver\RockiesFC\DWGS\LEGENDS\OXY-PID-STD-00013.dwg
LAST SAVED: 1/8/2020
BY: Max Palchikto


MAWP: 400 PSIG @ 350°F
MDMT: -20°F @ 400 PSIG
48" OD X 16' S/S
BURNER: 750 MBTU/HR

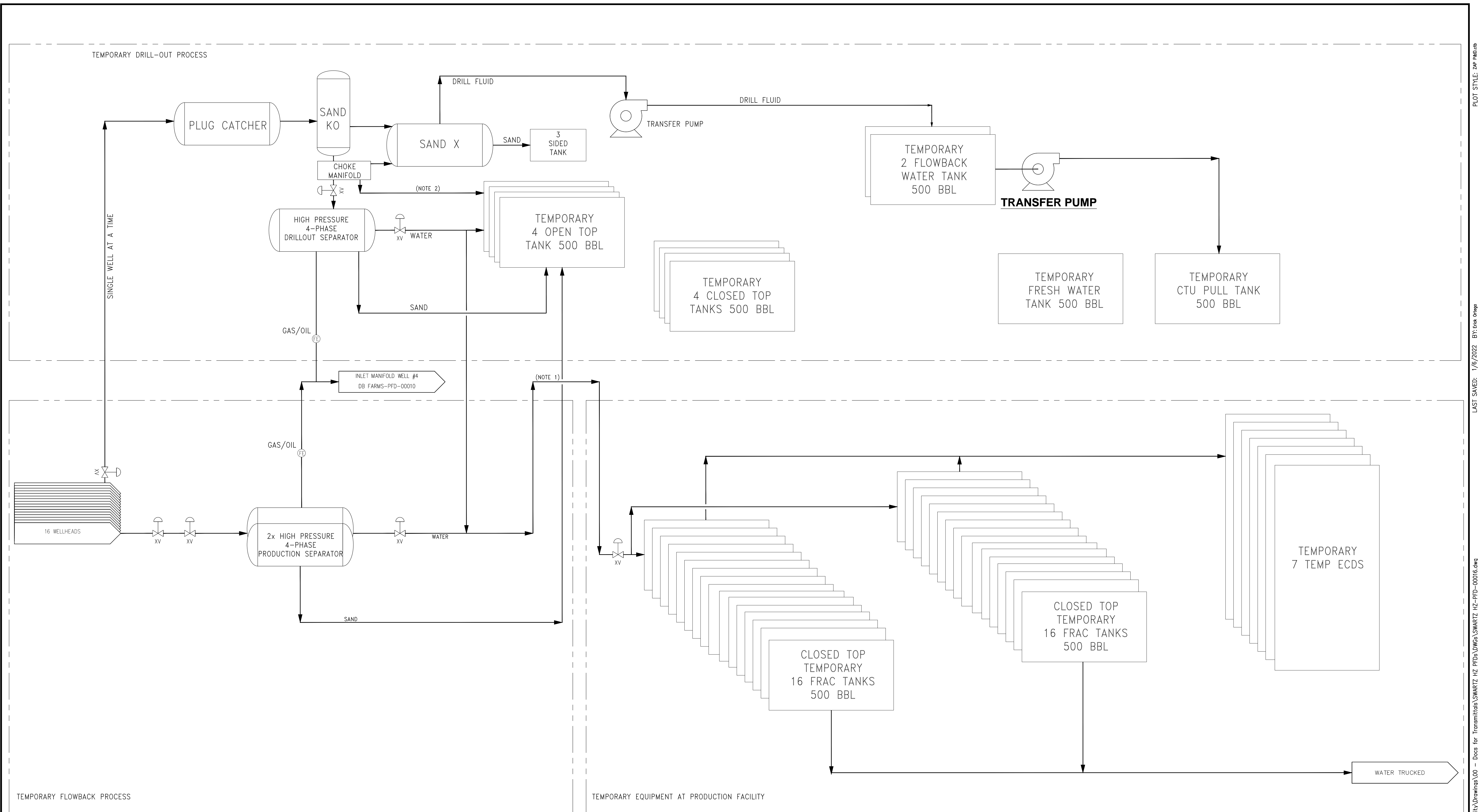


NOTES:

[illegible]

SWARTZ HZ

DRAWN BY: EJO		CREATION DATE: 1/10/22		AFE No.: -	
APPROVED: JTK		APPR. DATE: 1/10/22			
		DWG. No.:		SHEET No.	
SCALE: -		SWARTZ HZ-PFD-00010		- OF -	
					



NOTES: 1. WATER GOES TO PRODUCTION FACILITY TEMPORARY EQUIPMENT BY TEMPORARILY USING WELL #1 & #2 FLOW LINES. 2. INITIAL FLOW BYPASSES SEPARATORS DIRECTLY TO THE OPEN TOP TANKS UNTIL THE WELL PRODUCES OIL/GAS, THEN FLOW IS DIRECTED INTO THE SEPARATORS.	REFERENCE DRAWINGS		REVISIONS								Kerr-McGee Oil & Gas Onshore LP		PROCESS FLOW DIAGRAM PRELIMINARY FLOWBACK EQUIPMENT TEMPORARY			