

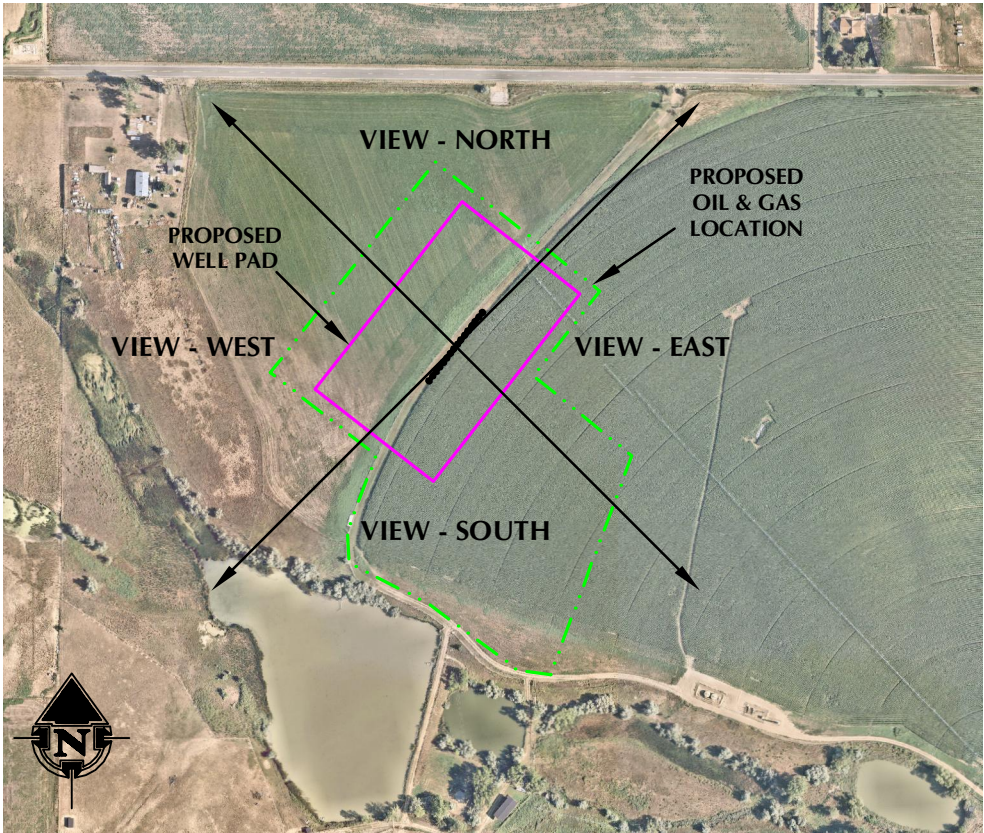
WELL PAD LOCATION PICTURES
SWARTZ 2-4HZ
SECTION 4, TOWNSHIP 3 NORTH, RANGE 67 WEST, 6TH P.M., WELD COUNTY, COLORADO



LOCATION PICTURE OF SWARTZ 2-4HZ WELL PAD - CAMERA VIEW NORTH



LOCATION PICTURE OF SWARTZ 2-4HZ WELL PAD - CAMERA VIEW SOUTH



VIEW - OVERHEAD
AERIAL IMAGERY COURTESY OF NEARMAP
2021-08-22



LOCATION PICTURE OF SWARTZ 2-4HZ WELL PAD - CAMERA VIEW EAST



LOCATION PICTURE OF SWARTZ 2-4HZ WELL PAD - CAMERA VIEW WEST

K:\ANDAKO\2018\2018_193_SWARTZ_2-4HZ_SEC_4\DWG\SWARTZ_16_WELL_OPTION.DWG, 11/28/2021 4:58:24 PM, shven



LOVELAND OFFICE
6706 North Franklin Avenue
Loveland, Colorado 80538
Phone 970-776-4331

SHERIDAN OFFICE
1095 Saberton Avenue
Sheridan, Wyoming 82801
Phone 307-674-0609

CONSULTING, LLC

**Kerr-McGee Oil &
Gas Onshore L.P.**
1099 18th Street
Denver, Colorado 80202

DATE SURVEYED: 11/8/21
DATE: 11/24/21
DRAFTER: HJL
REVISED:

DATA SOURCES:
-AERIAL IMAGERY COURTESY OF NEARMAP.