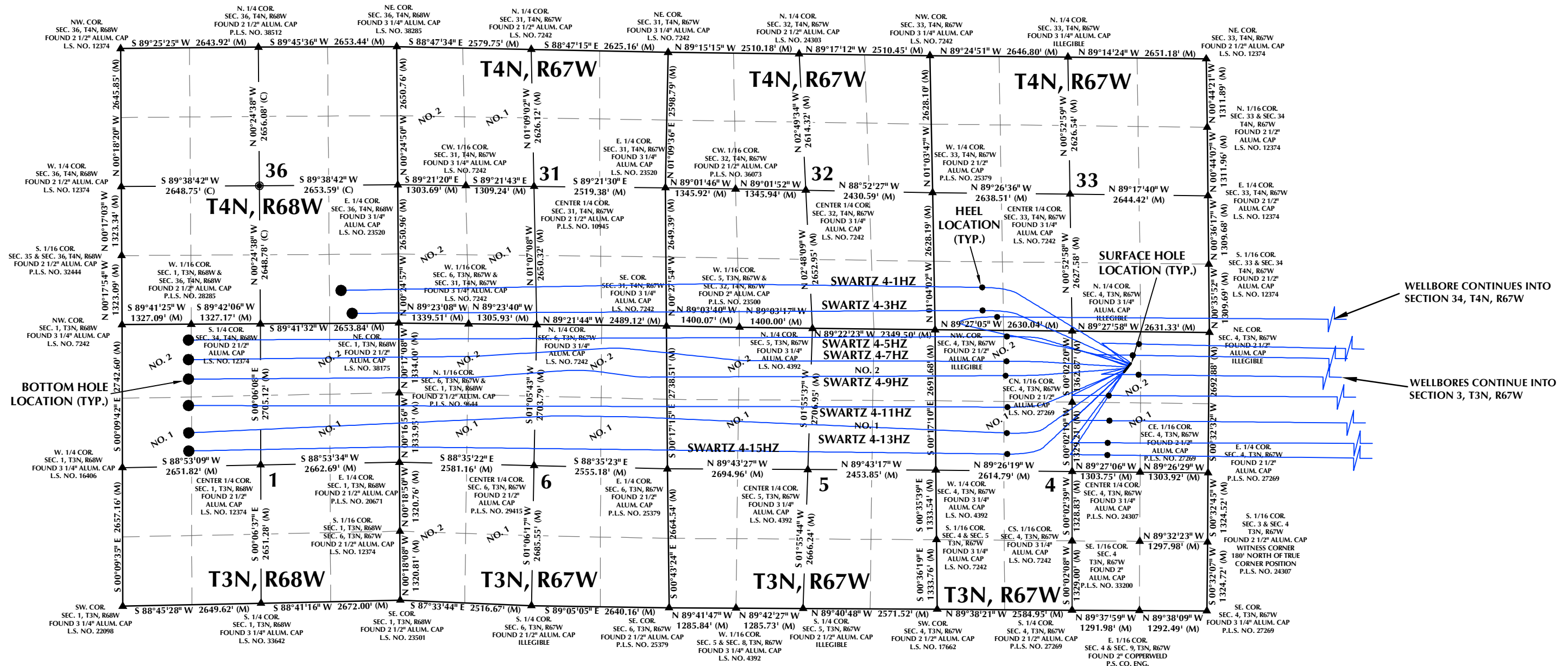
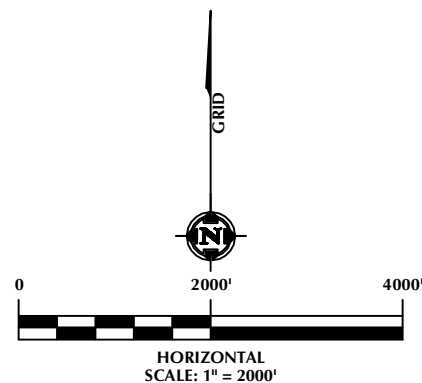


DIRECTIONAL WELL PLAT (COGCC) / MULTI-WELL PLAN (OGED)
SECTION 36, T4N, R68W, SECTION 1, T3N, R68W,
SECTIONS 31, 32, 33 & 34, T4N, R67W & SECTIONS 1, 2, 3, 4, 5 & 6, T3N, R67W



- NOTES:
- ▲ INDICATES SECTION CORNER.
 - INDICATES CALCULATED CORNER.
 - BASIS OF BEARING DERIVED FROM COLORADO COORDINATE SYSTEM OF 1983, NORTH ZONE.
 - ALL MEASURED DISTANCES ARE GRID.
 - COMBINED SCALE FACTOR: .99972808 CALCULATED FROM THE N. 1/4 CORNER OF SECTION 4, T3N, R67W.
 - WELL FOOTAGES ARE MEASURED AT RIGHT ANGLES TO THE SECTION LINES.



LOVELAND OFFICE
6706 North Franklin Avenue
Loveland, Colorado 80538
Phone 970-776-4331

SHERIDAN OFFICE
1095 Saberton Avenue
Sheridan, Wyoming 82801
Phone 307-674-0609

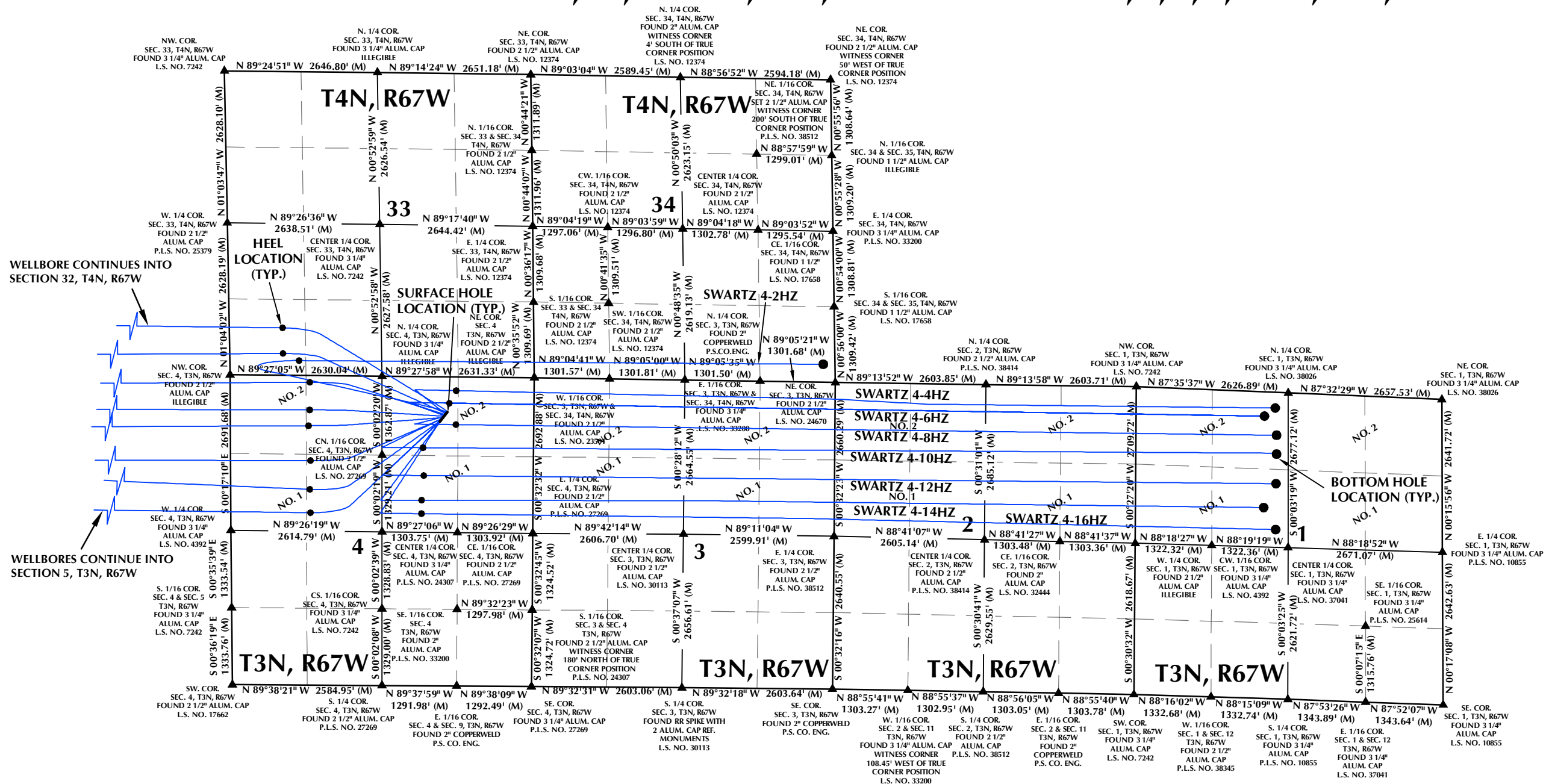
**Kerr-McGee Oil &
Gas Onshore LP**
1099 18th Street
Denver, Colorado 80202

WELL PAD - SWARTZ 2-4HZ

DIRECTIONAL WELL PLAT (COGCC) / MULTI-WELL PLAN (OGED)
SWARTZ 4-1HZ,
SWARTZ 4-2HZ, SWARTZ 4-3HZ, SWARTZ 4-4HZ,
SWARTZ 4-5HZ, SWARTZ 4-6HZ, SWARTZ 4-7HZ,
SWARTZ 4-8HZ, SWARTZ 4-9HZ, SWARTZ 4-10HZ,
SWARTZ 4-11HZ, SWARTZ 4-12HZ, SWARTZ 4-13HZ,
SWARTZ 4-14HZ, SWARTZ 4-15HZ & SWARTZ 4-16HZ
LOCATED IN SECTION 36, T4N, R68W,
SECTION 1, T3N, R68W,
SECTIONS 31, 32, 33 & 34, T4N, R67W &
SECTIONS 1, 2, 3, 4, 5 & 6, T3N, R67W, 6TH P.M.
WELD COUNTY, COLORADO

DRAFTED BY:	SJM	CHECKED BY:	RKF	SHEET NO:
DATE DRAFTED:	1/7/22	DATE SURVEYED:	12/14/21	1A
REVISED:	2/2/22	FILE NAME:	18-193	1A OF 1

DIRECTIONAL WELL PLAT (COGCC) / MULTI-WELL PLAN (OGED)
SECTION 36, T4N, R68W, SECTION 1, T3N, R68W,
SECTIONS 31, 32, 33 & 34, T4N, R67W & SECTIONS 1, 2, 3, 4, 5 & 6, T3N, R67W



WELLBORE CONTINUES INTO
SECTION 32, T4N, R67W

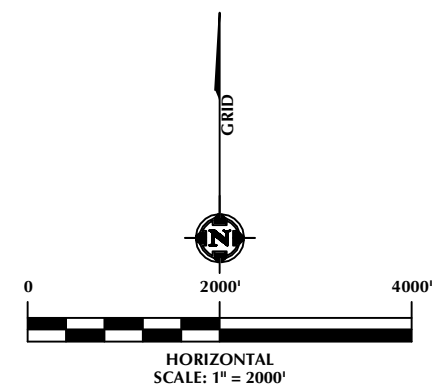
WELLBORES CONTINUE INTO
SECTION 5, T3N, R67W

HEEL
LOCATION (TYP.)

SURFACE HOLE
LOCATION (TYP.)

BOTTOM HOLE
LOCATION (TYP.)

- NOTES:
- ▲ INDICATES SECTION CORNER.
 - INDICATES CALCULATED CORNER.
 - BASIS OF BEARING DERIVED FROM COLORADO COORDINATE SYSTEM OF 1983, NORTH ZONE.
 - ALL MEASURED DISTANCES ARE GRID.
 - COMBINED FACTOR: .99972808 CALCULATED FROM THE N. 1/4 CORNER OF SECTION 4, T3N, R67W.
 - WELL FOOTAGES ARE MEASURED AT RIGHT ANGLES TO THE SECTION LINES.



609 CONSULTING, LLC

LOVELAND OFFICE
6706 North Franklin Avenue
Loveland, Colorado 80538
Phone 970-776-4331

SHERIDAN OFFICE
1095 Saberton Avenue
Sheridan, Wyoming 82801
Phone 307-674-0609

Kerr-McGee Oil & Gas Onshore LP

1099 18th Street
Denver, Colorado 80202

WELL PAD - SWARTZ 2-4HZ			
DIRECTIONAL WELL PLAT (COGCC) / MULTI-WELL PLAN (OGED) SWARTZ 4-1HZ, SWARTZ 4-2HZ, SWARTZ 4-3HZ, SWARTZ 4-4HZ, SWARTZ 4-5HZ, SWARTZ 4-6HZ, SWARTZ 4-7HZ, SWARTZ 4-8HZ, SWARTZ 4-9HZ, SWARTZ 4-10HZ, SWARTZ 4-11HZ, SWARTZ 4-12HZ, SWARTZ 4-13HZ, SWARTZ 4-14HZ, SWARTZ 4-15HZ & SWARTZ 4-16HZ LOCATED IN SECTION 36, T4N, R68W, SECTION 1, T3N, R68W, SECTIONS 31, 32, 33 & 34, T4N, R67W & SECTIONS 1, 2, 3, 4, 5 & 6, T3N, R67W, 6TH P.M. WELD COUNTY, COLORADO			
DRAFTED BY:	SJM	CHECKED BY:	RKF
DATE DRAFTED:	1/7/22	DATE SURVEYED:	12/14/21
REVISED:	2/2/22	FILE NAME:	18-193
			SHEET NO: 1B 1B OF 1

DIRECTIONAL WELL PLAT (COGCC) / MULTI-WELL PLAN (OGED)
SECTION 36, T4N, R68W, SECTION 1, T3N, R68W,
SECTIONS 31, 32, 33 & 34, T4N, R67W & SECTIONS 1, 2, 3, 4, 5 & 6, T3N, R67W

WELL NOTES:

SWARTZ 4-1HZ

SURFACE HOLE LOCATION: 610' FNL, 1501' FEL (SEC. 4, T3N, R67W)
HEEL LOCATION: 821' FSL, 920' FWL (SEC. 33, T4N, R67W)
BOTTOM HOLE LOCATION: 633' FSL, 1106' FEL (SEC. 36, T4N, R68W)

SWARTZ 4-2HZ

SURFACE HOLE LOCATION: 621' FNL, 1510' FEL (SEC. 4, T3N, R67W)
HEEL LOCATION: 258' FSL, 1195' FWL (SEC. 33, T4N, R67W)
BOTTOM HOLE LOCATION: 312' FSL, 205' FEL (SEC. 34, T4N, R67W)

SWARTZ 4-3HZ

SURFACE HOLE LOCATION: 633' FNL, 1519' FEL (SEC. 4, T3N, R67W)
HEEL LOCATION: 378' FSL, 918' FWL (SEC. 33, T4N, R67W)
BOTTOM HOLE LOCATION: 192' FSL, 895' FEL (SEC. 36, T4N, R68W)

SWARTZ 4-4HZ

SURFACE HOLE LOCATION: 645' FNL, 1529' FEL (SEC. 4, T3N, R67W)
HEEL LOCATION: 236' FNL, 1350' FEL (SEC. 4, T3N, R67W)
BOTTOM HOLE LOCATION: 270' FNL, 2427' FWL (SEC. 1, T3N, R67W)

SWARTZ 4-5HZ

SURFACE HOLE LOCATION: 657' FNL, 1538' FEL (SEC. 4, T3N, R67W)
HEEL LOCATION: 116' FNL, 1377' FWL (SEC. 4, T3N, R67W)
BOTTOM HOLE LOCATION: 303' FNL, 1270' FWL (SEC. 1, T3N, R68W)

SWARTZ 4-6HZ

SURFACE HOLE LOCATION: 669' FNL, 1547' FEL (SEC. 4, T3N, R67W)
HEEL LOCATION: 453' FNL, 1467' FEL (SEC. 4, T3N, R67W)
BOTTOM HOLE LOCATION: 419' FNL, 2217' FWL (SEC. 1, T3N, R67W)

SWARTZ 4-7HZ

SURFACE HOLE LOCATION: 681' FNL, 1556' FEL (SEC. 4, T3N, R67W)
HEEL LOCATION: 592' FNL, 1370' FWL (SEC. 4, T3N, R67W)
BOTTOM HOLE LOCATION: 679' FNL, 1270' FWL (SEC. 1, T3N, R68W)

SWARTZ 4-8HZ

SURFACE HOLE LOCATION: 693' FNL, 1565' FEL (SEC. 4, T3N, R67W)
HEEL LOCATION: 825' FNL, 1350' FEL (SEC. 4, T3N, R67W)
BOTTOM HOLE LOCATION: 740' FNL, 2430' FWL (SEC. 1, T3N, R67W)

SWARTZ 4-9HZ

SURFACE HOLE LOCATION: 705' FNL, 1574' FEL (SEC. 4, T3N, R67W)
HEEL LOCATION: 868' FNL, 1349' FWL (SEC. 4, T3N, R67W)
BOTTOM HOLE LOCATION: 1053' FNL, 1270' FWL (SEC. 1, T3N, R68W)

SWARTZ 4-10HZ

SURFACE HOLE LOCATION: 717' FNL, 1583' FEL (SEC. 4, T3N, R67W)
HEEL LOCATION: 1230' FNL, 1916' FEL (SEC. 4, T3N, R67W)
BOTTOM HOLE LOCATION: 1050' FNL, 2432' FWL (SEC. 1, T3N, R67W)

SWARTZ 4-11HZ

SURFACE HOLE LOCATION: 729' FNL, 1592' FEL (SEC. 4, T3N, R67W)
HEEL LOCATION: 1470' FNL, 1381' FWL (SEC. 4, T3N, R67W)
BOTTOM HOLE LOCATION: 1561' FNL, 1270' FWL (SEC. 1, T3N, R68W)

SWARTZ 4-12HZ

SURFACE HOLE LOCATION: 741' FNL, 1602' FEL (SEC. 4, T3N, R67W)
HEEL LOCATION: 1711' FNL, 1899' FEL (SEC. 4, T3N, R67W)
BOTTOM HOLE LOCATION: 1578' FNL, 2425' FWL (SEC. 1, T3N, R67W)

SWARTZ 4-13HZ

SURFACE HOLE LOCATION: 752' FNL, 1611' FEL (SEC. 4, T3N, R67W)
HEEL LOCATION: 1968' FNL, 1368' FWL (SEC. 4, T3N, R67W)
BOTTOM HOLE LOCATION: 2083' FNL, 1270' FWL (SEC. 1, T3N, R68W)

SWARTZ 4-14HZ

SURFACE HOLE LOCATION: 764' FNL, 1620' FEL (SEC. 4, T3N, R67W)
HEEL LOCATION: 2138' FNL, 1931' FEL (SEC. 4, T3N, R67W)
BOTTOM HOLE LOCATION: 1999' FNL, 2216' FWL (SEC. 1, T3N, R67W)

SWARTZ 4-15HZ

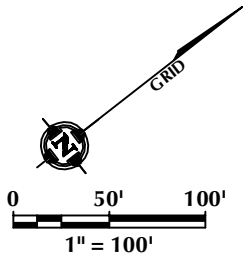
SURFACE HOLE LOCATION: 776' FNL, 1629' FEL (SEC. 4, T3N, R67W)
HEEL LOCATION: 2371' FNL, 1374' FWL (SEC. 4, T3N, R67W)
BOTTOM HOLE LOCATION: 2431' FNL, 1270' FWL (SEC. 1, T3N, R68W)

SWARTZ 4-16HZ

SURFACE HOLE LOCATION: 788' FNL, 1638' FEL (SEC. 4, T3N, R67W)
HEEL LOCATION: 2371' FNL, 1933' FEL (SEC. 4, T3N, R67W)
BOTTOM HOLE LOCATION: 2371' FNL, 2426' FWL (SEC. 1, T3N, R67W)

WELL HEAD SPACING DETAIL

SWARTZ 4-16HZ 15'
SWARTZ 4-15HZ 15'
SWARTZ 4-14HZ 15'
SWARTZ 4-13HZ 15'
SWARTZ 4-12HZ 15'
SWARTZ 4-11HZ 15'
SWARTZ 4-10HZ 15'
SWARTZ 4-9HZ 15'
SWARTZ 4-8HZ 15'
SWARTZ 4-7HZ 15'
SWARTZ 4-6HZ 15'
SWARTZ 4-5HZ 15'
SWARTZ 4-4HZ 15'
SWARTZ 4-3HZ 15'
SWARTZ 4-2HZ 15'
SWARTZ 4-1HZ 15'



LOVELAND OFFICE
6706 North Franklin Avenue
Loveland, Colorado 80538
Phone 970-776-4331

SHERIDAN OFFICE
1095 Saberton Avenue
Sheridan, Wyoming 82801
Phone 307-674-0609

**Kerr-McGee Oil &
Gas Onshore LP**
1099 18th Street
Denver, Colorado 80202

WELL PAD - SWARTZ 2-4HZ

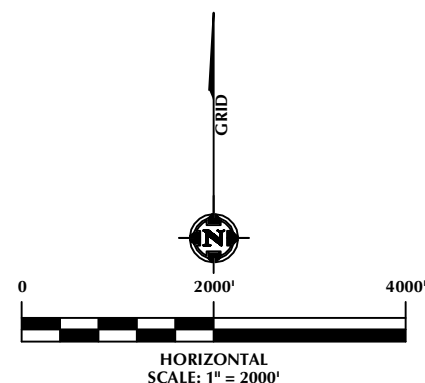
DIRECTIONAL WELL PLAT (COGCC) / MULTI-WELL PLAN (OGED)
SWARTZ 4-1HZ,
SWARTZ 4-2HZ, SWARTZ 4-3HZ, SWARTZ 4-4HZ,
SWARTZ 4-5HZ, SWARTZ 4-6HZ, SWARTZ 4-7HZ,
SWARTZ 4-8HZ, SWARTZ 4-9HZ, SWARTZ 4-10HZ,
SWARTZ 4-11HZ, SWARTZ 4-12HZ, SWARTZ 4-13HZ,
SWARTZ 4-14HZ, SWARTZ 4-15HZ & SWARTZ 4-16HZ
LOCATED IN SECTION 36, T4N, R68W,
SECTION 1, T3N, R68W,
SECTIONS 31, 32, 33 & 34, T4N, R67W &
SECTIONS 1, 2, 3, 4, 5 & 6, T3N, R67W, 6TH P.M.
WELD COUNTY, COLORADO

DRAFTED BY:	SJM	CHECKED BY:	RKF	SHEET NO:
DATE DRAFTED:	1/7/22	DATE SURVEYED:	12/14/21	1C
REVISED:	2/2/22	FILE NAME:	18-193	1C OF 1

DIRECTIONAL WELL PLAT (COGCC) / MULTI-WELL PLAN (OGED)
SECTION 36, T4N, R68W, SECTION 1, T3N, R68W,
SECTIONS 31, 32, 33 & 34, T4N, R67W & SECTIONS 1, 2, 3, 4, 5 & 6, T3N, R67W



LEGEND:
— DSU BOUNDARY
— WELLBORE TRAJECTORY
● HEEL LOCATION
● BOTTOM HOLE LOCATION

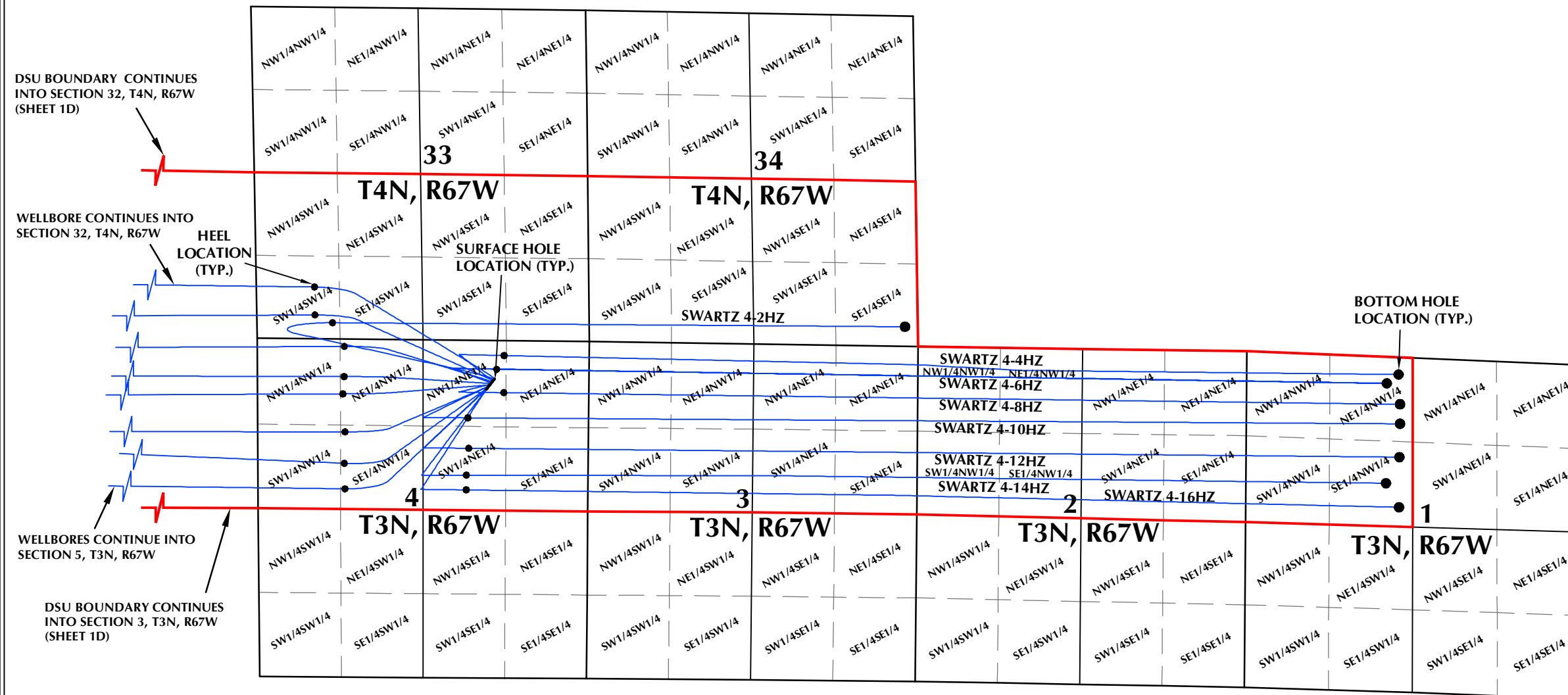


609
LOVELAND OFFICE
6706 North Franklin Avenue
Loveland, Colorado 80538
Phone 970-776-4331
SHERIDAN OFFICE
1095 Saberton Avenue
Sheridan, Wyoming 82801
Phone 307-674-0609
CONSULTING, LLC

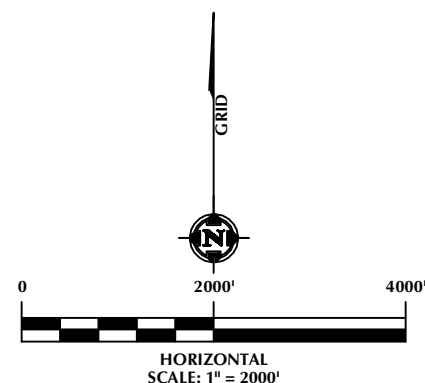
**Kerr-McGee Oil &
Gas Onshore LP**
1099 18th Street
Denver, Colorado 80202

WELL PAD - SWARTZ 2-4HZ			
DIRECTIONAL WELL PLAT (COGCC) / MULTI-WELL PLAN (OGED) SWARTZ 4-1HZ, SWARTZ 4-2HZ, SWARTZ 4-3HZ, SWARTZ 4-4HZ, SWARTZ 4-5HZ, SWARTZ 4-6HZ, SWARTZ 4-7HZ, SWARTZ 4-8HZ, SWARTZ 4-9HZ, SWARTZ 4-10HZ, SWARTZ 4-11HZ, SWARTZ 4-12HZ, SWARTZ 4-13HZ, SWARTZ 4-14HZ, SWARTZ 4-15HZ & SWARTZ 4-16HZ LOCATED IN SECTION 36, T4N, R68W, SECTION 1, T3N, R68W, SECTIONS 31, 32, 33 & 34, T4N, R67W & SECTIONS 1, 2, 3, 4, 5 & 6, T3N, R67W, 6TH P.M. WELD COUNTY, COLORADO			
DRAFTED BY:	SJM	CHECKED BY:	RKF
DATE DRAFTED:	1/7/22	DATE SURVEYED:	12/14/21
REVISED:	2/2/22	FILE NAME:	18-193
			SHEET NO: 1D 1D OF 1

DIRECTIONAL WELL PLAT (COGCC) / MULTI-WELL PLAN (OGED)
SECTION 36, T4N, R68W, SECTION 1, T3N, R68W,
SECTIONS 31, 32, 33 & 34, T4N, R67W & SECTIONS 1, 2, 3, 4, 5 & 6, T3N, R67W



LEGEND:
— DSU BOUNDARY
— WELLBORE TRAJECTORY
● HEEL LOCATION
● BOTTOM HOLE LOCATION



LOVELAND OFFICE
6706 North Franklin Avenue
Loveland, Colorado 80538
Phone 970-776-4331

SHERIDAN OFFICE
1095 Saberton Avenue
Sheridan, Wyoming 82801
Phone 307-674-0609

**Kerr-McGee Oil &
Gas Onshore LP**
1099 18th Street
Denver, Colorado 80202

WELL PAD - SWARTZ 2-4HZ

DIRECTIONAL WELL PLAT (COGCC) / MULTI-WELL PLAN (OGED)
SWARTZ 4-1HZ,
SWARTZ 4-2HZ, SWARTZ 4-3HZ, SWARTZ 4-4HZ,
SWARTZ 4-5HZ, SWARTZ 4-6HZ, SWARTZ 4-7HZ,
SWARTZ 4-8HZ, SWARTZ 4-9HZ, SWARTZ 4-10HZ,
SWARTZ 4-11HZ, SWARTZ 4-12HZ, SWARTZ 4-13HZ,
SWARTZ 4-14HZ, SWARTZ 4-15HZ & SWARTZ 4-16HZ
LOCATED IN SECTION 36, T4N, R68W,
SECTION 1, T3N, R68W,
SECTIONS 31, 32, 33 & 34, T4N, R67W &
SECTIONS 1, 2, 3, 4, 5 & 6, T3N, R67W, 6TH P.M.
WELD COUNTY, COLORADO

DRAFTED BY:	SJM	CHECKED BY:	RKF	SHEET NO:
DATE DRAFTED:	1/7/22	DATE SURVEYED:	12/14/21	1E
REVISED:	2/2/22	FILE NAME:	18-193	1E OF 1