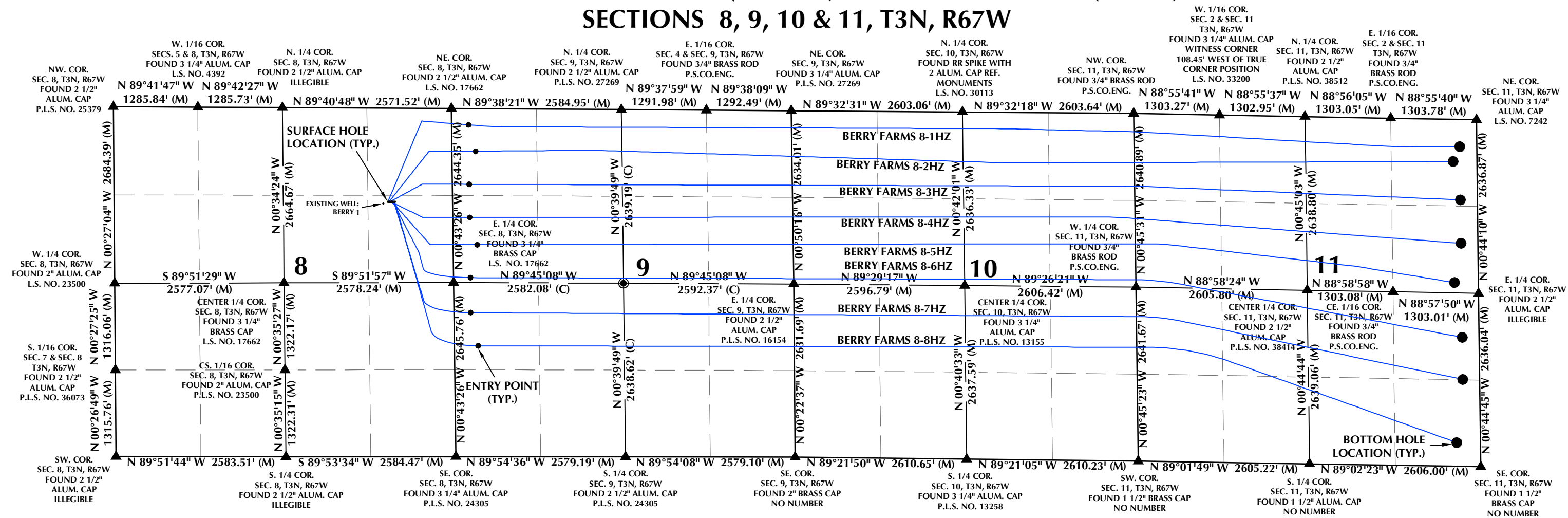
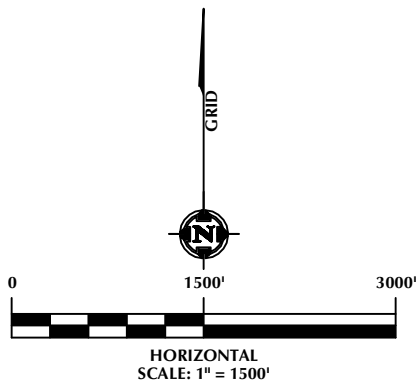


DIRECTIONAL WELL PLAT (COGCC) / MULTI-WELL PLAN (OGED)
SECTIONS 8, 9, 10 & 11, T3N, R67W



- NOTES:
- ▲ INDICATES SECTION CORNER.
 - INDICATES CALCULATED CORNER.
 - BASIS OF BEARING DERIVED FROM COLORADO COORDINATE SYSTEM OF 1983, NORTH ZONE.
 - ALL MEASURED DISTANCES ARE GRID.
 - COMBINED SCALE FACTOR: .99973053 CALCULATED FROM THE E. 1/4 CORNER OF SECTION 8, T3N, R67W.
 - WELL FOOTAGES ARE MEASURED AT RIGHT ANGLES TO THE SECTION LINES.



LOVELAND OFFICE
6706 North Franklin Avenue
Loveland, Colorado 80538
Phone 970-776-4331

SHERIDAN OFFICE
1095 Saberton Avenue
Sheridan, Wyoming 82801
Phone 307-674-0609

**Kerr-McGee Oil &
Gas Onshore LP**
1099 18th Street
Denver, Colorado 80202

WELL PAD - BERRY FARMS 8-8HZ

DIRECTIONAL WELL PLAT (COGCC) /
MULTI-WELL PLAN (OGED)
BERRY FARMS 8-1HZ, BERRY FARMS 8-2HZ,
BERRY FARMS 8-3HZ, BERRY FARMS 8-4HZ,
BERRY FARMS 8-5HZ, BERRY FARMS 8-6HZ,
BERRY FARMS 8-7HZ & BERRY FARMS 8-8HZ
LOCATED IN SECTIONS 8, 9, 10 & 11
T3N, R67W, 6TH P.M.
WELD COUNTY, COLORADO

DRAFTED BY:	SJM	CHECKED BY:	RKF	SHEET NO:
DATE DRAFTED:	11/30/21	DATE SURVEYED:	12/14/20	1A
REVISED:	3/21/22	FILE NAME:	20-11	1A OF 1

DIRECTIONAL WELL PLAT (COGCC) / MULTI-WELL PLAN (OGED)
SECTIONS 8, 9, 10 & 11, T3N, R67W

WELL NOTES:

BERRY FARMS 8-1HZ

SURFACE HOLE LOCATION: 1423' FNL, 984' FEL (SEC. 8)
ENTRY POINT: 247' FNL, 256' FWL (SEC. 9)
BOTTOM HOLE LOCATION: 411' FNL, 256' FEL (SEC. 11)

BERRY FARMS 8-2HZ

SURFACE HOLE LOCATION: 1423' FNL, 969' FEL (SEC. 8)
ENTRY POINT: 647' FNL, 360' FWL (SEC. 9)
BOTTOM HOLE LOCATION: 640' FNL, 360' FEL (SEC. 11)

BERRY FARMS 8-3HZ

SURFACE HOLE LOCATION: 1423' FNL, 954' FEL (SEC. 8)
ENTRY POINT: 1150' FNL, 255' FWL (SEC. 9)
BOTTOM HOLE LOCATION: 1220' FNL, 257' FEL (SEC. 11)

BERRY FARMS 8-4HZ

SURFACE HOLE LOCATION: 1423' FNL, 939' FEL (SEC. 8)
ENTRY POINT: 1652' FNL, 257' FWL (SEC. 9)
BOTTOM HOLE LOCATION: 1881' FNL, 255' FEL (SEC. 11)

BERRY FARMS 8-5HZ

SURFACE HOLE LOCATION: 1423' FNL, 924' FEL (SEC. 8)
ENTRY POINT: 2068' FNL, 366' FWL (SEC. 9)
BOTTOM HOLE LOCATION: 2480' FNL, 362' FEL (SEC. 11)

BERRY FARMS 8-6HZ

SURFACE HOLE LOCATION: 1423' FNL, 909' FEL (SEC. 8)
ENTRY POINT: 2570' FNL, 255' FWL (SEC. 9)
BOTTOM HOLE LOCATION: 1961' FSL, 255' FEL (SEC. 11)

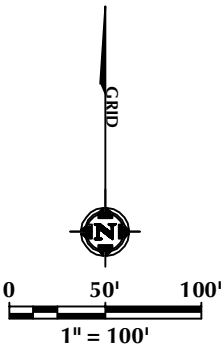
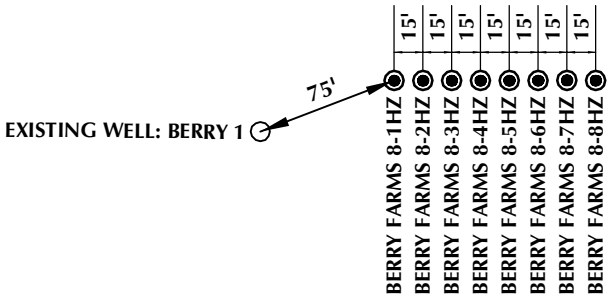
BERRY FARMS 8-7HZ

SURFACE HOLE LOCATION: 1422' FNL, 894' FEL (SEC. 8)
ENTRY POINT: 2187' FSL, 254' FWL (SEC. 9)
BOTTOM HOLE LOCATION: 1321' FSL, 255' FEL (SEC. 11)

BERRY FARMS 8-8HZ

SURFACE HOLE LOCATION: 1422' FNL, 879' FEL (SEC. 8)
ENTRY POINT: 1683' FSL, 361' FWL (SEC. 9)
BOTTOM HOLE LOCATION: 361' FSL, 360' FEL (SEC. 11)

WELL HEAD SPACING DETAIL



LOVELAND OFFICE
6706 North Franklin Avenue
Loveland, Colorado 80538
Phone 970-776-4331

SHERIDAN OFFICE
1095 Saberton Avenue
Sheridan, Wyoming 82801
Phone 307-674-0609

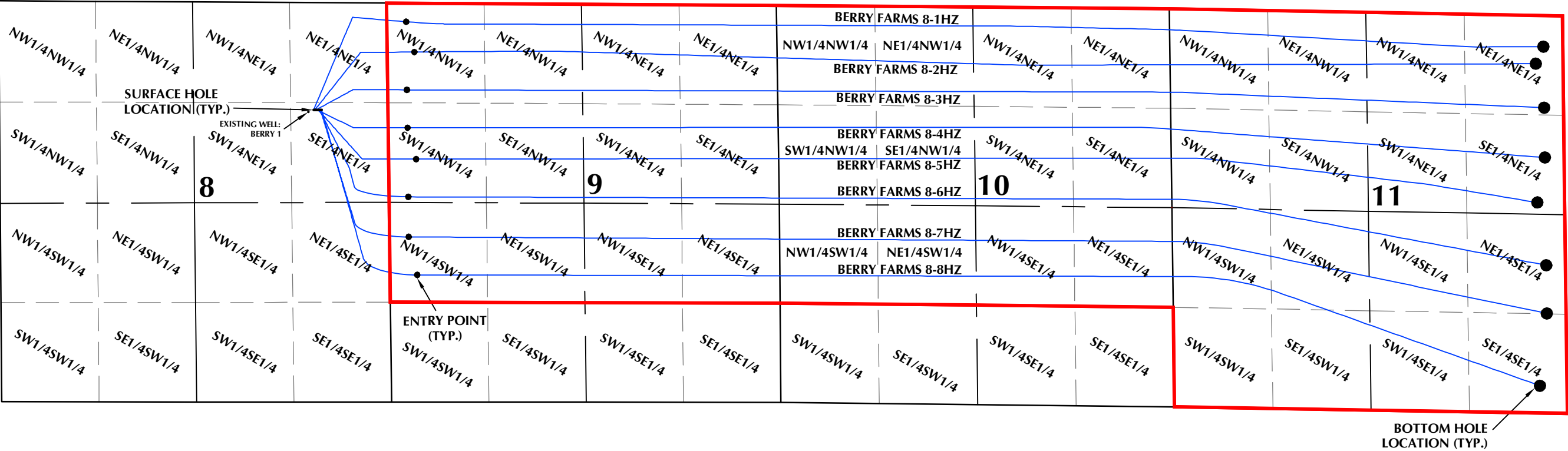
**Kerr-McGee Oil &
Gas Onshore LP**
1099 18th Street
Denver, Colorado 80202

WELL PAD - BERRY FARMS 8-8HZ

DIRECTIONAL WELL PLAT (COGCC) /
MULTI-WELL PLAN (OGED)
BERRY FARMS 8-1HZ, BERRY FARMS 8-2HZ,
BERRY FARMS 8-3HZ, BERRY FARMS 8-4HZ,
BERRY FARMS 8-5HZ, BERRY FARMS 8-6HZ,
BERRY FARMS 8-7HZ & BERRY FARMS 8-8HZ
LOCATED IN SECTIONS 8, 9, 10 & 11
T3N, R67W, 6TH P.M.
WELD COUNTY, COLORADO

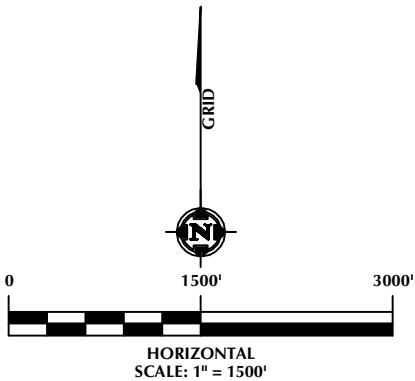
DRAFTED BY:	SJM	CHECKED BY:	RKF	SHEET NO: 1B 1B OF 1
DATE DRAFTED:	11/30/21	DATE SURVEYED:	12/14/20	
REVISED:	3/21/22	FILE NAME:	20-11	

DIRECTIONAL WELL PLAT (COGCC) / MULTI-WELL PLAN (OGED)
SECTIONS 8, 9, 10 & 11, T3N, R67W



LEGEND:

- DSU BOUNDARY
- WELLBORE TRAJECTORY
- ENTRY POINT
- BOTTOM HOLE LOCATION



LOVELAND OFFICE
6706 North Franklin Avenue
Loveland, Colorado 80538
Phone 970-776-4331

SHERIDAN OFFICE
1095 Saberton Avenue
Sheridan, Wyoming 82801
Phone 307-674-0609

Kerr-McGee Oil & Gas Onshore LP
1099 18th Street
Denver, Colorado 80202

WELL PAD - BERRY FARMS 8-8HZ

DIRECTIONAL WELL PLAT (COGCC) / MULTI-WELL PLAN (OGED)
BERRY FARMS 8-1HZ, BERRY FARMS 8-2HZ, BERRY FARMS 8-3HZ, BERRY FARMS 8-4HZ, BERRY FARMS 8-5HZ, BERRY FARMS 8-6HZ, BERRY FARMS 8-7HZ & BERRY FARMS 8-8HZ
LOCATED IN SECTIONS 8, 9, 10 & 11
T3N, R67W, 6TH P.M.
WELD COUNTY, COLORADO

DRAFTED BY:	SJM	CHECKED BY:	RKF	SHEET NO:
DATE DRAFTED:	11/30/21	DATE SURVEYED:	12/14/20	1C
REVISED:	3/21/22	FILE NAME:	20-11	1C OF 1