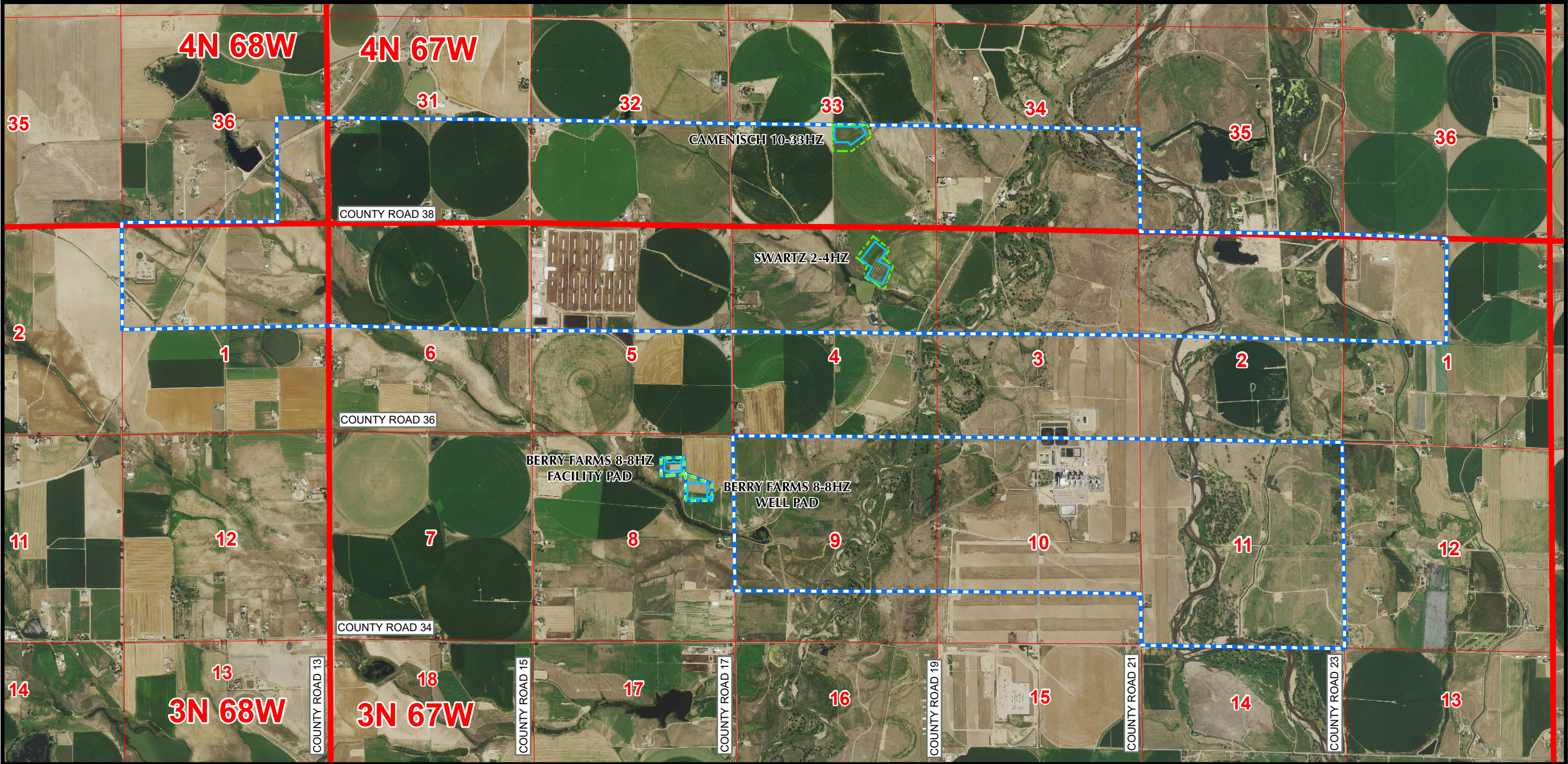



K:\NADARKO\2021\2021_55_MT_DEMOCRAT_DEVELOPMENT_AREA_REVERSE_SETBACKS\GIS\FORM 2A\MT_DEMOCRAT_FORM_2A_OGDP.mxd 5/16/2022 4:20:39 PM

MT. DEMOCRAT OIL AND GAS DEVELOPMENT PLAN
BERRY FARMS 8-8HZ, SWARTZ 2-4HZ & CAMENISCH 10-33HZ
SECTIONS 8 & 4, T3N, R67W & SECTION 33, T4N, R67W, 6TH P.M., WELD COUNTY, COLORADO



- Legend**
- PROPOSED WORKING PAD SURFACE
 - PROPOSED OIL AND GAS LOCATION
 - PROPOSED OGDP BOUNDARY

Kerr-McGee Oil & Gas Onshore LP
1099 18th Street
Denver, Colorado 80202



609 Consulting, LLC

LOVELAND OFFICE
6706 North Franklin Avenue
Loveland, Colorado 80538
Phone 970-776-4331

SHERIDAN OFFICE
1095 Saberton Avenue
Sheridan, Wyoming 82801
Phone 307-674-0609

Drawn by: BB
Revised: BB

Date: 21 Mar 2022
Date: 17 May 2022

