

FREMONT ENVIRONMENTAL INC.

May 19, 2022

Mr. Daniel Peterson
Noble Energy Inc.
2115 117th Avenue
Greeley, CO 80634

Subject: **Groundwater Data Submittal**
 Libsack R G27-15
 SWSE Sec 27, T4N, R65W
 API # 05-123-13256
 Weld County, Colorado
 Fremont Project No. C013-009
 Facility ID# 323601, Remediation #7871

Dear Mr. Peterson:

Enclosed please find a copy of the above referenced Groundwater Data Submittal for the Libsack R G27-15 site in Weld County, Colorado. The enclosed report describes monitoring and sampling efforts to assess groundwater quality at the site.

Please contact me at (303) 956-8714 if you require any additional information.

Fremont appreciates the opportunity to provide this service.

Sincerely,
FREMONT ENVIRONMENTAL INC.



Paul V. Henehan, P.E.
Senior Consultant

Enclosure

TABLE 1
SUMMARY OF GROUNDWATER ELEVATION DATA AND CHEMISTRY DATA
NOBLE ENERGY, INC.
LIBSACK R G27-15, WELD COUNTY, COLORADO
FREMONT PROJECT NO. C013-009

SAMPLE LOCATION	DATE	BENZENE (µg/L)	TOLUENE (µg/L)	ETHYL BENZENE (µg/L)	TOTAL XYLENES (µg/L)	NAPHTHALENE (µg/L)	1,2,4 TRIMETHYL- BENZENE (µg/L)	1,3,5 TRIMETHYL- BENZENE (µg/L)	TOC ELEVATION (feet)	DEPTH TO GROUND WATER (ft)	GROUND WATER ELEVATION (ft)	FREE PRODUCT THICKNESS (ft)
MW-1	06/14/13	<1.0	<1.0	<1.0	<1.0	NA	NA	NA	99.89	2.93	96.96	NP
	06/24/13	NS	NS	NS	NS	NA	NA	NA		2.66	97.23	NP
	07/09/13	NS	NS	NS	NS	NA	NA	NA		2.53	97.36	NP
	07/19/13	NS	NS	NS	NS	NA	NA	NA		Inundated	Inundated	Inundated
	10/18/13	<1	<1	<1	<1	NA	NA	NA		1.66	98.23	NP
	01/13/14	<1	<1	<1	<1	NA	NA	NA		2.25	97.64	NP
	04/02/14	<1	<1	<1	<1	NA	NA	NA		2.74	97.15	NP
	07/15/14	<1.0	<1.0	<1.0	<1.0	NA	NA	NA		2.52	97.37	NP
	10/07/14	<1.0	<1.0	<1.0	<1.0	NA	NA	NA		1.86	98.03	NP
	01/20/15	<1.0	<1.0	<1.0	<1.0	NA	NA	NA		1.87	98.02	NP
	04/20/15	<1.0	<1.0	<1.0	<1.0	NA	NA	NA		2.11	97.78	NP
MW-2	06/14/13	<1.0	<1.0	<1.0	<1.0	NA	NA	NA	100.00	3.01	96.99	NP
	06/24/13	NS	NS	NS	NS	NA	NA	NA		2.75	97.25	NP
	07/09/13	NS	NS	NS	NS	NA	NA	NA		2.62	97.38	NP
	07/19/13	NS	NS	NS	NS	NA	NA	NA		1.95	98.05	NP
	10/18/13	<1	<1	<1	<1	NA	NA	NA		1.75	98.25	NP
	01/13/14	<1	<1	<1	<1	NA	NA	NA		2.36	97.64	NP
	04/02/14	<1	<1	<1	<1	NA	NA	NA		2.82	97.18	NP
	07/15/14	<1.0	<1.0	<1.0	<1.0	NA	NA	NA		2.61	97.39	NP
	10/07/14	<1.0	<1.0	<1.0	<1.0	NA	NA	NA		1.97	98.03	NP
	01/20/15	<1.0	<1.0	<1.0	<1.0	NA	NA	NA		1.97	98.03	NP
	04/20/15	<1.0	<1.0	<1.0	<1.0	NA	NA	NA		2.20	97.80	NP
MW-3	06/14/13	<1.0	<1.0	<1.0	<1.0	NA	NA	NA	99.92	3.05	96.87	NP
	06/24/13	NS	NS	NS	NS	NA	NA	NA		2.78	97.14	NP
	07/09/13	NS	NS	NS	NS	NA	NA	NA		2.65	97.27	NP
	07/19/13	NS	NS	NS	NS	NA	NA	NA		2.02	97.90	NP
	10/18/13	1.3	<1	<1	<1	NA	NA	NA		1.88	98.04	NP
	01/13/14	<1	<1	<1	<1	NA	NA	NA		2.40	97.52	NP
	04/02/14	<1	<1	<1	<1	NA	NA	NA		2.84	97.08	NP
	07/15/14	<1.0	<1.0	<1.0	<1.0	NA	NA	NA		2.66	97.26	NP
	10/07/14	<1.0	<1.0	<1.0	<1.0	NA	NA	NA		2.02	97.90	NP
	01/20/15	<1.0	<1.0	<1.0	<1.0	NA	NA	NA		2.04	97.88	NP
	04/20/15	<1.0	<1.0	<1.0	<1.0	NA	NA	NA		2.27	97.65	NP

SAMPLE LOCATION	DATE	BENZENE (µg/L)	TOLUENE (µg/L)	ETHYL BENZENE (µg/L)	TOTAL XYLENES (µg/L)	NAPHTHALENE (µg/L)	1,2,4 TRIMETHYL-BENZENE (µg/L)	1,3,5 TRIMETHYL-BENZENE (µg/L)	TOC ELEVATION (feet)	DEPTH TO GROUND WATER (ft)	GROUND WATER ELEVATION (ft)	FREE PRODUCT THICKNESS (ft)
MW-4	06/14/13	4,523	<1.0	<1.0	168	NA	NA	NA	99.47	2.69	96.78	NP
	06/24/13	NS	NS	NS	NS	NA	NA	NA		2.42	97.05	NP
	07/09/13	868	<1.0	<1.0	<1.0	NA	NA	NA		2.28	97.19	NP
	07/19/13	NS	NS	NS	NS	NA	NA	NA		1.61	97.86	NP
	10/18/13	<1	<1	<1	<1	NA	NA	NA		1.46	98.01	NP
	01/13/14	<1	<1	<1	<1	NA	NA	NA		2.07	97.40	NP
	04/02/14	33.1	<1	<1	<1	NA	NA	NA		2.55	96.92	NP
	07/15/14	6.4	<1.0	<1.0	<1.0	NA	NA	NA		2.31	97.16	NP
	10/07/14	<1.0	<1.0	<1.0	<1.0	NA	NA	NA		1.68	97.79	NP
	01/20/15	<1.0	<1.0	<1.0	<1.0	NA	NA	NA		1.71	97.76	NP
	04/20/15	1.6	<1.0	<1.0	<1.0	NA	NA	NA		1.94	97.53	NP
MW-5	06/14/13	494	<1.0	1.8	15.7	NA	NA	NA	99.29	2.68	96.61	NP
	06/24/13	NS	NS	NS	NS	NA	NA	NA		2.39	96.90	NP
	07/09/13	535	<1.0	<1.0	<1.0	NA	NA	NA		2.26	97.03	NP
	07/19/13	NS	NS	NS	NS	NA	NA	NA		Inundated	Inundated	Inundated
	10/18/13	<1	<1	<1	<1	NA	NA	NA		1.31	97.98	NP
	01/13/14	<1	<1	<1	<1	NA	NA	NA		2.01	97.28	NP
	04/02/14	<1	<1	<1	<1	NA	NA	NA		2.49	96.80	NP
	07/15/14	<1.0	<1.0	<1.0	<1.0	NA	NA	NA		2.26	97.03	NP
	10/07/14	<1.0	<1.0	<1.0	<1.0	NA	NA	NA		1.65	97.64	NP
	01/20/15	<1.0	<1.0	<1.0	<1.0	NA	NA	NA		1.66	97.63	NP
	04/20/15	<1.0	<1.0	<1.0	<1.0	NA	NA	NA		1.89	97.40	NP
MW-6	06/14/13	<1.0	<1.0	<1.0	<1.0	NA	NA	NA	99.66	3.01	96.65	NP
	06/24/13	NS	NS	NS	NS	NA	NA	NA		2.74	96.92	NP
	07/09/13	NS	NS	NS	NS	NA	NA	NA		2.61	97.05	NP
	07/19/13	NS	NS	NS	NS	NA	NA	NA		2.01	97.65	NP
	10/18/13	<1	<1	<1	<1	NA	NA	NA		1.79	97.87	NP
	01/13/14	2.9	<1	<1	<1	NA	NA	NA		1.33	98.33	NP
	04/02/14	258	<1	<1	<1	NA	NA	NA		2.82	96.84	NP
	07/15/14	<1.0	<1.0	<1.0	<1.0	NA	NA	NA		2.61	97.05	NP
	10/07/14	<1.0	<1.0	<1.0	<1.0	NA	NA	NA		1.98	97.68	NP
	01/20/15	<1.0	<1.0	<1.0	<1.0	NA	NA	NA		1.99	97.67	NP
	04/20/15	<1.0	<1.0	<1.0	<1.0	NA	NA	NA		2.23	97.43	NP
	07/20/15	<1.0	<1.0	<1.0	<1.0	NA	NA	NA		2.38	97.28	NP
	10/28/15	<1.0	<1.0	<1.0	<1.0	NA	NA	NA		1.86	97.80	NP
	01/29/16	<1.0	<1.0	<1.0	<1.0	NA	NA	NA		3.07	96.59	NP
	04/28/16	<1.0	<1.0	<1.0	<1.0	NA	NA	NA		1.81	97.85	NP
	07/26/16	<1.0	<1.0	<1.0	<1.0	NA	NA	NA		2.74	96.92	NP

SAMPLE LOCATION	DATE	BENZENE (µg/L)	TOLUENE (µg/L)	ETHYL BENZENE (µg/L)	TOTAL XYLENES (µg/L)	NAPHTHALENE (µg/L)	1,2,4 TRIMETHYL- BENZENE (µg/L)	1,3,5 TRIMETHYL- BENZENE (µg/L)	TOC ELEVATION (feet)	DEPTH TO GROUND WATER (ft)	GROUND WATER ELEVATION (ft)	FREE PRODUCT THICKNESS (ft)
MW-6	10/18/16	<1.0	<1.0	<1.0	<1.0	NA	NA	NA	99.66	1.93	97.73	NP
	01/06/17	<1.0	<1.0	<1.0	<1.0	NA	NA	NA		3.01	96.65	NP
	04/05/17	<1.0	<1.0	<1.0	<1.0	NA	NA	NA		3.39	96.27	NP
	07/25/17	<1.0	<1.0	<1.0	2.0	NA	NA	NA		3.25	96.41	NP
	10/12/17	<1.0	<1.0	<1.0	<1.0	NA	NA	NA		1.78	97.88	NP
	01/25/18	<1.0	2.0	1.3	6.8	NA	NA	NA		2.36	97.30	NP
	04/06/18	<1.0	<1.0	<1.0	<2.0	NA	NA	NA		2.69	96.97	NP
	07/09/18	<1.0	<1.0	<1.0	<2.0	NA	NA	NA		2.87	96.79	NP
	10/12/18	<1.0	<1.0	<1.0	<2.0	NA	NA	NA		2.78	96.88	NP
	01/29/19	<1.0	<1.0	<1.0	<2.0	NA	NA	NA		2.66	97.00	NP
	04/16/19	<1.0	<1.0	<1.0	<2.0	NA	NA	NA		2.56	97.10	NP
	07/16/19	<1.0	<1.0	<1.0	<2.0	NA	NA	NA		3.06	96.60	NP
	10/09/19	<1.0	<1.0	<1.0	<2.0	NA	NA	NA		2.57	97.09	NP
	01/16/20	<1.0	<1.0	<1.0	<2.0	NA	NA	NA		2.50	97.16	NP
	04/09/20	<1.0	<1.0	<1.0	<2.0	NA	NA	NA		2.69	96.97	NP
	07/14/20	<1.0	<1.0	<1.0	<2.0	NA	NA	NA		3.72	95.94	NP
	10/27/20	<1.0	<1.0	<1.0	<2.0	NA	NA	NA		3.12	96.54	NP
	01/08/21	<1.0	<1.0	<1.0	<2.0	NA	NA	NA		3.02	96.64	NP
	04/26/21	<1.0	<1.0	<1.0	<2.0	NA	NA	NA		2.61	97.05	NP
	07/21/21	<1.0	<1.0	<1.0	<2.0	NA	NA	NA		2.82	96.84	NP
	10/28/21	<1.0	<1.0	<1.0	<2.0	<1.0	<1.0	<1.0		2.59	97.07	NP
	01/19/22	<1.0	<1.0	<1.0	<2.0	<1.0	<1.0	<1.0		2.56	97.10	NP
	04/20/22	<1.0	<1.0	<1.0	<2.0	<1.0	<1.0	<1.0		2.99	96.67	NP
MW-7	06/14/13	1,063	27.8	<1.0	104	NA	NA	NA	99.38	2.72	96.66	NP
	06/24/13	NS	NS	NS	NS	NA	NA	NA		2.43	96.95	NP
	07/09/13	2,226	100	58.9	164	NA	NA	NA		2.3	97.08	NP
	07/19/13	NS	NS	NS	NS	NA	NA	NA		1.76	97.62	NP
	10/18/13	108	<1	3.9	1.9	NA	NA	NA		1.44	97.94	NP
	01/13/14	<1	<1	<1	<1	NA	NA	NA		2.02	97.36	NP
	04/02/14	<1	<1	<1	<1	NA	NA	NA		2.47	96.91	NP
	07/15/14	<1.0	<1.0	<1.0	<1.0	NA	NA	NA		2.28	97.10	NP
	10/07/14	<1.0	<1.0	<1.0	<1.0	NA	NA	NA		1.63	97.75	NP
	01/20/15	<1.0	<1.0	<1.0	<1.0	NA	NA	NA		1.64	97.74	NP
	04/20/15	NF	NF	NF	NF	NA	NA	NA		NF	NF	NF
	07/20/15	<1.0	<1.0	<1.0	<1.0	NA	NA	NA		1.19	98.19	NP
	10/28/15	<1.0	<1.0	<1.0	<1.0	NA	NA	NA		0.67	98.71	NP
	01/29/16	Damaged	Damaged	Damaged	Damaged	NA	NA	NA		Damaged	Damaged	Damaged
	03/17/16	<1.0	<1.0	<1.0	<1.0	NA	NA	NA		NM	NM	NP
	04/28/16	<1.0	<1.0	<1.0	<1.0	NA	NA	NA		too shallow	too shallow	NP

SAMPLE LOCATION	DATE	BENZENE (µg/L)	TOLUENE (µg/L)	ETHYL BENZENE (µg/L)	TOTAL XYLENES (µg/L)	NAPHTHALENE (µg/L)	1,2,4 TRIMETHYL-BENZENE (µg/L)	1,3,5 TRIMETHYL-BENZENE (µg/L)	TOC ELEVATION (feet)	DEPTH TO GROUND WATER (ft)	GROUND WATER ELEVATION (ft)	FREE PRODUCT THICKNESS (ft)
MW-7	07/26/16	<1.0	<1.0	<1.0	<1.0	NA	NA	NA	99.38	1.80	97.58	NP
	10/18/16	<1.0	<1.0	<1.0	<1.0	NA	NA	NA		0.98	98.40	NP
	01/06/17	<1.0	<1.0	<1.0	<1.0	NA	NA	NA		2.07	97.31	NP
	04/05/17	<1.0	<1.0	<1.0	<1.0	NA	NA	NA		2.46	96.92	NP
	07/25/17	<1.0	<1.0	<1.0	<1.0	NA	NA	NA		2.34	97.04	NP
	10/12/17	<1.0	<1.0	<1.0	<1.0	NA	NA	NA		0.87	99.66	NP
	01/25/18	<1.0	<1.0	<1.0	<2.0	NA	NA	NA		1.90	97.48	NP
	04/06/18	<1.0	<1.0	<1.0	<2.0	NA	NA	NA		2.23	97.15	NP
	07/09/18	<1.0	<1.0	<1.0	<2.0	NA	NA	NA		2.41	96.97	NP
	10/12/18	<1.0	<1.0	<1.0	<2.0	NA	NA	NA		2.33	97.05	NP
	01/29/19	<1.0	<1.0	<1.0	<2.0	NA	NA	NA		2.20	97.18	NP
	04/16/19	<1.0	<1.0	<1.0	<2.0	NA	NA	NA		2.11	97.27	NP
	07/16/19	<1.0	<1.0	<1.0	<2.0	NA	NA	NA		2.36	97.02	NP
	10/09/19	<1.0	<1.0	<1.0	<2.0	NA	NA	NA		2.11	97.27	NP
	01/16/20	<1.0	<1.0	<1.0	<2.0	NA	NA	NA		2.08	97.30	NP
	04/09/20	<1.0	<1.0	<1.0	<2.0	NA	NA	NA		2.27	97.11	NP
	07/14/20	<1.0	<1.0	<1.0	<2.0	NA	NA	NA		3.28	96.10	NP
	10/27/20	<1.0	<1.0	<1.0	<2.0	NA	NA	NA		2.66	96.72	NP
	01/08/21	<1.0	<1.0	<1.0	<2.0	NA	NA	NA		2.51	96.87	NP
	04/26/21	<1.0	<1.0	<1.0	<2.0	NA	NA	NA		2.12	97.26	NP
	07/21/21	<1.0	<1.0	<1.0	<2.0	NA	NA	NA		2.52	96.86	NP
	10/28/21	<1.0	<1.0	<1.0	<2.0	<1.0	<1.0	<1.0		2.24	97.14	NP
	01/19/22	<1.0	<1.0	<1.0	<2.0	<1.0	<1.0	<1.0		2.15	97.23	NP
	04/20/22	<1.0	<1.0	<1.0	<2.0	<1.0	<1.0	<1.0		2.55	96.83	NP
MW-8	06/14/13	<1.0	<1.0	<1.0	<1.0	NA	NA	NA	99.46	2.69	96.77	NP
	06/24/13	NS	NS	NS	NS	NA	NA	NA		2.39	97.07	NP
	07/09/13	NS	NS	NS	NS	NA	NA	NA		2.27	97.19	NP
	07/19/13	NS	NS	NS	NS	NA	NA	NA		Inundated	Inundated	Inundated
	10/18/13	<1	<1	<1	<1	NA	NA	NA		1.79	97.67	NP
	01/13/14	<1	<1	<1	<1	NA	NA	NA		2.08	97.38	NP
	04/02/14	<1	<1	<1	<1	NA	NA	NA		2.46	97.00	NP
	07/15/14	<1.0	<1.0	<1.0	<1.0	NA	NA	NA		2.25	97.21	NP
	10/07/14	<1.0	<1.0	<1.0	<1.0	NA	NA	NA		1.69	97.77	NP
	01/20/15	<1.0	<1.0	<1.0	<1.0	NA	NA	NA		1.71	97.75	NP
	04/20/15	<1.0	<1.0	<1.0	<1.0	NA	NA	NA		1.93	97.53	NP
MW-9	06/14/13	<1.0	<1.0	<1.0	<1.0	NA	NA	NA	99.51	3.05	96.46	NP
	06/24/13	NS	NS	NS	NS	NA	NA	NA	99.03	2.25	96.78	NP
	07/09/13	NS	NS	NS	NS	NA	NA	NA		2.14	96.89	NP
	07/19/13	NS	NS	NS	NS	NA	NA	NA		1.18	97.85	NP

SAMPLE LOCATION	DATE	BENZENE (µg/L)	TOLUENE (µg/L)	ETHYL BENZENE (µg/L)	TOTAL XYLENES (µg/L)	NAPHTHALENE (µg/L)	1,2,4 TRIMETHYL-BENZENE (µg/L)	1,3,5 TRIMETHYL-BENZENE (µg/L)	TOC ELEVATION (feet)	DEPTH TO GROUND WATER (ft)	GROUND WATER ELEVATION (ft)	FREE PRODUCT THICKNESS (ft)
MW-9	10/18/13	<1	<1	<1	<1	NA	NA	NA	99.03	1.28	97.75	NP
	01/13/14	<1	<1	<1	<1	NA	NA	NA		1.82	97.69	NP
	04/02/14	<1	<1	<1	<1	NA	NA	NA		2.31	96.72	NP
	07/15/14	<1.0	<1.0	<1.0	<1.0	NA	NA	NA		2.11	97.40	NP
	10/07/14	<1.0	<1.0	<1.0	<1.0	NA	NA	NA		1.44	98.07	NP
	01/20/15	<1.0	<1.0	<1.0	<1.0	NA	NA	NA		1.46	97.57	NP
	04/20/15	<1.0	<1.0	<1.0	<1.0	NA	NA	NA		1.69	97.34	NP
MW-10	06/14/13	<1.0	<1.0	<1.0	<1.0	NA	NA	NA	100.01	3.61	96.40	NP
	06/24/13	NS	NS	NS	NS	NA	NA	NA	99.44	2.7	96.74	NP
	07/09/13	NS	NS	NS	NS	NA	NA	NA		2.59	96.85	NP
	07/19/13	NS	NS	NS	NS	NA	NA	NA		1.89	97.55	NP
	10/18/13	<1	<1	<1	<1	NA	NA	NA		1.73	97.71	NP
	01/13/14	<1	<1	<1	<1	NA	NA	NA		2.29	97.72	NP
	04/02/14	<1	<1	<1	<1	NA	NA	NA		2.76	96.68	NP
	07/15/14	<1.0	<1.0	<1.0	<1.0	NA	NA	NA		2.54	97.47	NP
	10/07/14	<1.0	<1.0	<1.0	<1.0	NA	NA	NA		1.91	98.10	NP
	01/20/15	<1.0	<1.0	<1.0	<1.0	NA	NA	NA		1.92	97.52	NP
	04/20/15	<1.0	<1.0	<1.0	<1.0	NA	NA	NA		2.16	97.28	NP
MW-11	06/14/13	<1.0	<1.0	<1.0	<1.0	NA	NA	NA	100.50	4.1	96.40	NP
	06/24/13	NS	NS	NS	NS	NA	NA	NA	99.98	3.23	96.75	NP
	07/09/13	NS	NS	NS	NS	NA	NA	NA		3.12	96.86	NP
	07/19/13	NS	NS	NS	NS	NA	NA	NA		2.48	97.50	NP
	10/18/13	<1	<1	<1	<1	NA	NA	NA		2.24	97.74	NP
	01/13/14	<1	<1	<1	<1	NA	NA	NA		2.82	97.68	NP
	04/02/14	<1	<1	<1	<1	NA	NA	NA		3.31	96.67	NP
	07/15/14	<1.0	<1.0	<1.0	<1.0	NA	NA	NA		3.42	97.08	NP
	10/07/14	<1.0	<1.0	<1.0	<1.0	NA	NA	NA		2.43	98.07	NP
	01/20/15	<1.0	<1.0	<1.0	<1.0	NA	NA	NA		2.44	97.54	NP
	04/20/15	<1.0	<1.0	<1.0	<1.0	NA	NA	NA		2.67	97.31	NP
MW-12	07/09/13	<1.0	<1.0	<1.0	<1.0	NA	NA	NA	99.68	2.62	97.06	NP
	07/19/13	NS	NS	NS	NS	NA	NA	NA		2.14	97.54	NP
	10/18/13	<1	<1	<1	<1	NA	NA	NA		1.74	97.94	NP
	01/13/14	<1	<1	<1	<1	NA	NA	NA		2.32	97.36	NP
	04/02/14	<1	<1	<1	<1	NA	NA	NA		2.81	96.87	NP
	07/15/14	WD	WD	WD	WD	NA	NA	NA		WD	WD	WD
	01/20/15	<1.0	<1.0	<1.0	<1.0	NA	NA	NA		WD	WD	NP
	04/20/15	NF	NF	NF	NF	NA	NA	NA		NF	NF	NF

SAMPLE LOCATION	DATE	BENZENE (µg/L)	TOLUENE (µg/L)	ETHYL BENZENE (µg/L)	TOTAL XYLENES (µg/L)	NAPHTHALENE (µg/L)	1,2,4 TRIMETHYL-BENZENE (µg/L)	1,3,5 TRIMETHYL-BENZENE (µg/L)	TOC ELEVATION (feet)	DEPTH TO GROUND WATER (ft)	GROUND WATER ELEVATION (ft)	FREE PRODUCT THICKNESS (ft)
MW-13	07/09/13	71.1		160	2,606	NA	NA	NA	99.76	2.78	96.98	NP
	07/19/13	NS	NS	NS	NS	NA	NA	NA		2.28	97.48	NP
	10/18/13	131	<1	9.4	200	NA	NA	NA		1.93	97.83	NP
	01/13/14	112	<1	91.7	4.3	NA	NA	NA		2.51	97.25	NP
	04/02/14	75.5	1.7	47.9	125	NA	NA	NA		3.07	96.69	NP
	07/15/14	71.2	<1.0	31.4	168	NA	NA	NA		2.84	96.92	NP
	10/07/14	96.9	<1.0	56.6	2.1	NA	NA	NA		1.19	98.57	NP
	01/20/15	100	<1.0	129	13.5	NA	NA	NA		1.20	98.56	NP
	04/20/15	130	<1.0	92	<1.0	NA	NA	NA		1.44	98.32	NP
	07/20/15	70	<1.0	7.2	<1.0	NA	NA	NA		2.58	97.18	NP
	10/28/15	30	<1.0	2.4	<1.0	NA	NA	NA		2.06	97.70	NP
	01/29/16	63	<1.0	22	<1.0	NA	NA	NA		3.28	96.48	NP
	04/28/16	34	<1.0	7.2	<1.0	NA	NA	NA		2.02	97.74	NP
	07/26/16	13	<1.0	<1.0	<1.0	NA	NA	NA		2.95	96.81	NP
	10/18/16	18	<1.0	1.5	<1.0	NA	NA	NA		2.14	97.62	NP
	01/06/17	46	<1.0	9.1	<1.0	NA	NA	NA		3.22	96.54	NP
	04/05/17	25	<1.0	1.0	<1.0	NA	NA	NA		3.62	96.14	NP
	07/25/17	<1.0	<1.0	<1.0	<1.0	NA	NA	NA		3.51	96.25	NP
	10/12/17	<1.0	<1.0	<1.0	<1.0	NA	NA	NA		2.04	99.66	NP
	01/25/18	<1.0	<1.0	1.1	<2.0	NA	NA	NA		2.51	97.25	NP
	04/06/18	<1.0	<1.0	<1.0	<2.0	NA	NA	NA		2.79	96.97	NP
	07/09/18	<1.0	<1.0	<1.0	<2.0	NA	NA	NA		2.97	96.79	NP
	10/12/18	1.8	<1.0	<1.0	<2.0	NA	NA	NA		2.90	96.86	NP
	01/29/19	<1.0	<1.0	<1.0	<2.0	NA	NA	NA		2.73	97.03	NP
	04/16/19	<1.0	<1.0	<1.0	<2.0	NA	NA	NA		2.73	97.03	NP
	07/16/19	<1.0	<1.0	<1.0	<2.0	NA	NA	NA		3.22	96.54	NP
	10/09/19	<1.0	<1.0	<1.0	<2.0	NA	NA	NA		2.70	97.06	NP
	01/16/20	<1.0	<1.0	<1.0	<2.0	NA	NA	NA		2.71	97.05	NP
	04/09/20	<1.0	<1.0	<1.0	<2.0	NA	NA	NA		2.87	96.89	NP
	07/14/20	<1.0	<1.0	<1.0	<2.0	NA	NA	NA		3.87	95.89	NP
	10/27/20	<1.0	<1.0	<1.0	<2.0	NA	NA	NA		3.25	96.51	NP
	01/08/21	<1.0	<1.0	<1.0	<2.0	NA	NA	NA		3.12	96.64	NP
	04/26/21	<1.0	<1.0	<1.0	<2.0	NA	NA	NA		2.62	97.14	NP
	07/21/21	<1.0	<1.0	<1.0	<2.0	NA	NA	NA		2.99	96.77	NP
	10/28/21	<1.0	<1.0	<1.0	<2.0	<1.0	<1.0	<1.0		2.70	97.06	NP
	01/19/22	<1.0	<1.0	<1.0	<2.0	<1.0	<1.0	<1.0		2.65	97.11	NP
	04/20/22	<1.0	<1.0	<1.0	<2.0	<1.0	<1.0	<1.0		3.12	96.64	NP
MW-14	07/09/13	9.2	<1.0	1.6	16.8	NA	NA	NA	99.42	2.5	96.92	NP
	07/19/13	NS	NS	NS	NS	NA	NA	NA		1.96	97.46	NP

SAMPLE LOCATION	DATE	BENZENE (µg/L)	TOLUENE (µg/L)	ETHYL BENZENE (µg/L)	TOTAL XYLENES (µg/L)	NAPHTHALENE (µg/L)	1,2,4 TRIMETHYL- BENZENE (µg/L)	1,3,5 TRIMETHYL- BENZENE (µg/L)	TOC ELEVATION (feet)	DEPTH TO GROUND WATER (ft)	GROUND WATER ELEVATION (ft)	FREE PRODUCT THICKNESS (ft)
MW-14	10/18/13	10.6	<1	<1	<1	NA	NA	NA	99.42	1.63	97.79	NP
	01/13/14	1.2	<1	<1	<1	NA	NA	NA		2.28	97.14	NP
	04/02/14	2	<1	<1	4	NA	NA	NA		2.78	96.64	NP
	07/15/14	1.6	<1.0	<1.0	1.5	NA	NA	NA		2.58	96.84	NP
	10/07/14	<1.0	<1.0	<1.0	<1.0	NA	NA	NA		1.92	97.50	NP
	01/20/15	<1.0	<1.0	<1.0	<1.0	NA	NA	NA		1.94	97.48	NP
	04/20/15	<1.0	<1.0	<1.0	<1.0	NA	NA	NA		2.17	97.25	NP
	07/20/15	<1.0	<1.0	<1.0	<1.0	NA	NA	NA		2.41	97.01	NP
	10/28/15	<1.0	<1.0	<1.0	<1.0	NA	NA	NA		1.89	97.53	NP
	01/29/16	<1.0	<1.0	<1.0	<1.0	NA	NA	NA		3.11	96.31	NP
	04/28/16	<1.0	<1.0	<1.0	<1.0	NA	NA	NA		1.85	97.57	NP
	07/26/16	<1.0	<1.0	<1.0	<1.0	NA	NA	NA		2.78	96.64	NP
	10/18/16	<1.0	<1.0	<1.0	<1.0	NA	NA	NA		1.97	97.45	NP
	01/06/17	<1.0	<1.0	<1.0	<1.0	NA	NA	NA		3.05	96.37	NP
	04/05/17	<1.0	<1.0	<1.0	<1.0	NA	NA	NA		3.43	95.99	NP
	07/25/17	<1.0	<1.0	<1.0	<1.0	NA	NA	NA		3.24	96.18	NP
	10/12/17	<1.0	<1.0	<1.0	<1.0	NA	NA	NA		1.77	99.66	NP
	01/25/18	<1.0	<1.0	<1.0	<2.0	NA	NA	NA		2.38	97.04	NP
	04/06/18	<1.0	<1.0	<1.0	<2.0	NA	NA	NA		2.72	96.70	NP
	07/09/18	<1.0	<1.0	<1.0	<2.0	NA	NA	NA		2.92	96.50	NP
	10/12/18	<1.0	<1.0	<1.0	<2.0	NA	NA	NA		2.80	96.62	NP
	01/29/19	<1.0	<1.0	<1.0	<2.0	NA	NA	NA		2.79	96.63	NP
	04/16/19	<1.0	<1.0	<1.0	<2.0	NA	NA	NA		2.61	96.81	NP
	07/16/19	<1.0	<1.0	<1.0	<2.0	NA	NA	NA		3.12	96.30	NP
	10/09/19	<1.0	<1.0	<1.0	<2.0	NA	NA	NA		2.59	96.83	NP
	01/16/20	<1.0	<1.0	<1.0	<2.0	NA	NA	NA		2.63	96.79	NP
	04/09/20	<1.0	<1.0	<1.0	<2.0	NA	NA	NA		2.63	96.79	NP
	07/14/20	<1.0	<1.0	<1.0	<2.0	NA	NA	NA		3.68	95.74	NP
	10/27/20	<1.0	<1.0	<1.0	<2.0	NA	NA	NA		3.05	96.37	NP
	01/08/21	<1.0	<1.0	<1.0	<2.0	NA	NA	NA		2.91	96.51	NP
	04/26/21	<1.0	<1.0	<1.0	<2.0	NA	NA	NA		2.62	96.80	NP
	07/21/21	<1.0	<1.0	<1.0	<2.0	NA	NA	NA		2.94	96.48	NP
	10/28/21	<1.0	<1.0	<1.0	<2.0	<1.0	<1.0	<1.0		2.65	96.77	NP
	01/19/22	<1.0	<1.0	<1.0	<2.0	<1.0	<1.0	<1.0		2.63	96.79	NP
	04/20/22	<1.0	<1.0	<1.0	<2.0	<1.0	<1.0	<1.0		3.06	96.36	NP
MW-15	07/09/13	<1.0	<1.0	<1.0	<1.0	NA	NA	NA	99.59	2.68	96.91	NP
	07/19/13	NS	NS	NS	NS	NA	NA	NA		2.12	97.47	NP
	10/18/13	<1	<1	<1	<1	NA	NA	NA		1.82	97.77	NP
	01/13/14	<1	<1	<1	<1	NA	NA	NA		2.39	97.20	NP

SAMPLE LOCATION	DATE	BENZENE (µg/L)	TOLUENE (µg/L)	ETHYL BENZENE (µg/L)	TOTAL XYLENES (µg/L)	NAPHTHALENE (µg/L)	1,2,4 TRIMETHYL-BENZENE (µg/L)	1,3,5 TRIMETHYL-BENZENE (µg/L)	TOC ELEVATION (feet)	DEPTH TO GROUND WATER (ft)	GROUND WATER ELEVATION (ft)	FREE PRODUCT THICKNESS (ft)
MW-15	04/02/14	<1	<1	<1	<1	NA	NA	NA	99.59	2.88	96.71	NP
	07/15/14	<1.0	<1.0	<1.0	<1.0	NA	NA	NA		2.65	96.94	NP
	10/07/14	<1.0	<1.0	<1.0	<1.0	NA	NA	NA		2.01	97.58	NP
	01/20/15	<1.0	<1.0	<1.0	<1.0	NA	NA	NA		2.03	97.56	NP
	04/20/15	<1.0	<1.0	<1.0	<1.0	NA	NA	NA		2.26	97.33	NP
MW-16	07/09/13	177	NS	394	5,089	NA	NA	NA	99.18	2.3	96.88	NP
	07/19/13	NS	NS	NS	NS	NA	NA	NA		1.74	97.44	NP
	10/18/13	166	<1	104	405	NA	NA	NA		1.41	97.77	NP
	01/13/14	249	<1	268	1733	NA	NA	NA		2.02	97.16	NP
	04/02/14	149	3.1	127	852	NA	NA	NA		2.49	96.69	NP
	07/15/14	<1.0	<1.0	<1.0	<1.0	NA	NA	NA		2.29	96.89	NP
	10/07/14	<1.0	<1.0	<1.0	<1.0	NA	NA	NA		1.61	97.57	NP
	01/20/15	<1.0	<1.0	<1.0	<1.0	NA	NA	NA		1.62	97.56	NP
	04/20/15	<1.0	<1.0	<1.0	<1.0	NA	NA	NA		1.85	97.33	NP
	07/20/15	<1.0	<1.0	<1.0	<1.0	NA	NA	NA		2.06	97.12	NP
	10/28/15	<1.0	<1.0	<1.0	<1.0	NA	NA	NA		1.53	97.65	NP
	01/29/16	<1.0	<1.0	<1.0	<1.0	NA	NA	NA		2.75	96.43	NP
	04/28/16	<1.0	<1.0	<1.0	<1.0	NA	NA	NA		1.50	97.68	NP
	07/26/16	<1.0	<1.0	<1.0	<1.0	NA	NA	NA		2.43	96.75	NP
	10/18/16	<1.0	<1.0	<1.0	<1.0	NA	NA	NA		1.63	97.55	NP
	01/06/17	<1.0	<1.0	<1.0	<1.0	NA	NA	NA		2.72	96.46	NP
	04/05/17	<1.0	<1.0	<1.0	<1.0	NA	NA	NA		3.10	96.08	NP
	07/25/17	<1.0	<1.0	<1.0	<1.0	NA	NA	NA		2.99	96.19	NP
	10/12/17	<1.0	<1.0	<1.0	<1.0	NA	NA	NA		1.52	99.66	NP
	01/25/18	<1.0	<1.0	<1.0	<2.0	NA	NA	NA		1.96	97.22	NP
	04/06/18	<1.0	<1.0	1.6	9.6	NA	NA	NA		2.32	96.86	NP
	07/09/18	<1.0	<1.0	<1.0	<2.0	NA	NA	NA		2.48	96.70	NP
	10/12/18	<1.0	<1.0	<1.0	2.5	NA	NA	NA		2.42	96.76	NP
	01/29/19	<1.0	<1.0	<1.0	<2.0	NA	NA	NA		2.31	96.87	NP
	04/16/19	<1.0	<1.0	<1.0	<2.0	NA	NA	NA		2.19	96.99	NP
	07/16/19	<1.0	<1.0	<1.0	<2.0	NA	NA	NA		2.71	96.47	NP
	10/09/19	<1.0	<1.0	<1.0	<2.0	NA	NA	NA		2.20	96.98	NP
	01/16/20	<1.0	<1.0	<1.0	<2.0	NA	NA	NA		2.16	97.02	NP
	04/09/20	<1.0	<1.0	<1.0	<2.0	NA	NA	NA		2.31	96.87	NP
	07/14/20	<1.0	<1.0	<1.0	<2.0	NA	NA	NA		3.21	95.97	NP
	10/27/20	<1.0	<1.0	<1.0	<2.0	NA	NA	NA		2.57	96.61	NP
	01/08/21	<1.0	<1.0	<1.0	<2.0	NA	NA	NA		2.41	96.77	NP
	04/26/21	<1.0	<1.0	<1.0	<2.0	NA	NA	NA		1.95	97.23	NP
	07/21/21	<1.0	<1.0	<1.0	<2.0	NA	NA	NA		2.53	96.65	NP

SAMPLE LOCATION	DATE	BENZENE (µg/L)	TOLUENE (µg/L)	ETHYL BENZENE (µg/L)	TOTAL XYLENES (µg/L)	NAPHTHALENE (µg/L)	1,2,4 TRIMETHYL-BENZENE (µg/L)	1,3,5 TRIMETHYL-BENZENE (µg/L)	TOC ELEVATION (feet)	DEPTH TO GROUND WATER (ft)	GROUND WATER ELEVATION (ft)	FREE PRODUCT THICKNESS (ft)
MW-16	10/28/21	<1.0	<1.0	<1.0	<2.0	<1.0	<1.0	<1.0	99.18	2.15	97.03	NP
	01/19/22	<1.0	<1.0	<1.0	<2.0	<1.0	<1.0	<1.0		2.05	97.13	NP
	04/20/22	<1.0	<1.0	<1.0	<2.0	<1.0	<1.0	<1.0		2.49	96.69	NP
MW-17	07/09/13	851		390	9,256	NA	NA	NA	99.45	2.5	96.95	NP
	07/19/13	NS	NS	NS	NS	NA	NA	NA		2.02	97.43	NP
	10/18/13	961	<1	82.2	8473	NA	NA	NA		1.43	98.02	NP
	01/13/14	455	<1	101	4781	NA	NA	NA		2.19	97.26	NP
	04/02/14	435	4.4	69.1	5184	NA	NA	NA		2.69	96.76	NP
	07/15/14	1081	<1.0	106	5741	NA	NA	NA		2.46	96.99	NP
	10/07/14	461	<1.0	247	2008	NA	NA	NA		1.85	97.60	NP
	01/20/15	212	2.3	181	1844	NA	NA	NA		1.86	97.59	NP
	04/20/15	26	<1.0	4.4	140	NA	NA	NA		2.19	97.26	NP
	07/20/15	280	<1.0	21	130	NA	NA	NA		2.27	97.18	NP
	10/28/15	77	<1.0	29	54	NA	NA	NA		1.75	97.70	NP
	01/29/16	<1.0	<1.0	<1.0	<1.0	NA	NA	NA		2.97	96.48	NP
	04/28/16	<1.0	<1.0	<1.0	<1.0	NA	NA	NA		1.70	97.75	NP
	07/26/16	16	<1.0	1.8	18	NA	NA	NA		2.64	96.81	NP
	10/18/16	71	<1.0	2.9	17	NA	NA	NA		1.83	97.62	NP
	01/06/17	91	<1.0	7.2	5.5	NA	NA	NA		2.91	96.54	NP
	04/05/17	50	<1.0	4.1	<1.0	NA	NA	NA		3.28	96.17	NP
	07/25/17	3.1	<1.0	<1.0	<1.0	NA	NA	NA		3.16	96.29	NP
	10/12/17	14	<1.0	1.3	25	NA	NA	NA		1.69	99.66	NP
	01/25/18	190	1.1	3.8	10	NA	NA	NA		2.15	97.30	NP
	04/06/18	<1.0	<1.0	<1.0	<2.0	NA	NA	NA		2.46	96.99	NP
	07/09/18	NS	NS	NS	NS	NA	NA	NA		DRY	DRY	DRY
	10/12/18	NS	NS	NS	NS	NA	NA	NA		DRY	DRY	DRY
	01/29/19	<1.0	<1.0	<1.0	<2.0	NA	NA	NA		3.00	96.45	NP
	04/16/19	<1.0	<1.0	<1.0	<2.0	NA	NA	NA		3.57	95.88	NP
	07/16/19	<1.0	<1.0	<1.0	<2.0	NA	NA	NA		4.01	95.44	NP
	10/09/19	1.3	<1.0	<1.0	<2.0	NA	NA	NA		2.45	97.00	NP
	01/16/20	5.7	<1.0	6.4	2.8	NA	NA	NA		3.60	95.85	NP
	04/09/20	<1.0	<1.0	<1.0	<2.0	NA	NA	NA		2.57	96.88	NP
	07/14/20	<1.0	<1.0	<1.0	<2.0	NA	NA	NA		3.87	95.58	NP
	10/27/20	<1.0	<1.0	<1.0	<2.0	NA	NA	NA		2.62	96.83	NP
	01/08/21	<1.0	<1.0	<1.0	<2.0	NA	NA	NA		2.83	96.62	NP
	04/26/21	DES	DES	DES	DES	DES	DES	DES		DES	DES	DES
MW-17R	02/28/22	DRY	DRY	DRY	DRY	DRY	DRY	DRY	99.24	DRY	DRY	DRY
	04/20/22	240	<1.0	<1.0	74	<1.0	38	27		2.52	96.72	NP
MW-18	07/09/13	<1.0	<1.0	<1.0	<1.0	NA	NA	NA	98.28	1.54	96.74	NP

SAMPLE LOCATION	DATE	BENZENE (µg/L)	TOLUENE (µg/L)	ETHYL BENZENE (µg/L)	TOTAL XYLENES (µg/L)	NAPHTHALENE (µg/L)	1,2,4 TRIMETHYL-BENZENE (µg/L)	1,3,5 TRIMETHYL-BENZENE (µg/L)	TOC ELEVATION (feet)	DEPTH TO GROUND WATER (ft)	GROUND WATER ELEVATION (ft)	FREE PRODUCT THICKNESS (ft)
MW-18	07/19/13	NS	NS	NS	NS	NA	NA	NA	98.28	1.02	97.26	NP
	10/18/13	<1	<1	<1	<1	NA	NA	NA		0.66	97.62	NP
	01/13/14	<1	<1	<1	<1	NA	NA	NA		1.15	97.13	NP
	04/02/14	<1	<1	<1	<1	NA	NA	NA		1.68	96.60	NP
	07/15/14	<1.0	<1.0	<1.0	<1.0	NA	NA	NA		1.49	96.79	NP
	10/07/14	<1.0	<1.0	<1.0	<1.0	NA	NA	NA		0.81	97.47	NP
	01/20/15	<1.0	<1.0	<1.0	<1.0	NA	NA	NA		0.83	97.45	NP
	04/20/15	<1.0	<1.0	<1.0	<1.0	NA	NA	NA		1.06	97.22	NP
	07/20/15	<1.0	<1.0	<1.0	<1.0	NA	NA	NA		1.29	96.99	NP
	10/28/15	<1.0	<1.0	<1.0	<1.0	NA	NA	NA		0.76	97.52	NP
	01/29/16	<1.0	<1.0	<1.0	<1.0	NA	NA	NA		1.98	96.30	NP
	04/28/16	<1.0	<1.0	<1.0	<1.0	NA	NA	NA		too shallow	too shallow	NP
	07/26/16	<1.0	<1.0	<1.0	<1.0	NA	NA	NA		1.81	96.47	NP
	10/18/16	<1.0	<1.0	<1.0	<1.0	NA	NA	NA		1.00	97.28	NP
	01/06/17	<1.0	<1.0	<1.0	<1.0	NA	NA	NA		2.09	96.19	NP
	04/05/17	<1.0	<1.0	<1.0	<1.0	NA	NA	NA		2.47	95.81	NP
	07/25/17	<1.0	<1.0	<1.0	<1.0	NA	NA	NA		2.36	95.92	NP
	10/12/17	<1.0	<1.0	<1.0	<1.0	NA	NA	NA		0.89	99.66	NP
	01/25/18	<1.0	<1.0	<1.0	<2.0	NA	NA	NA		1.12	97.16	NP
	04/06/18	<1.0	<1.0	<1.0	<2.0	NA	NA	NA		1.45	96.83	NP
	07/09/18	<1.0	<1.0	<1.0	<2.0	NA	NA	NA		1.70	96.58	NP
	10/12/18	<1.0	<1.0	<1.0	<2.0	NA	NA	NA		1.58	96.70	NP
	01/29/19	<1.0	<1.0	<1.0	<2.0	NA	NA	NA		1.42	96.86	NP
	04/16/19	<1.0	<1.0	<1.0	<2.0	NA	NA	NA		1.32	96.96	NP
	07/16/19	<1.0	<1.0	<1.0	<2.0	NA	NA	NA		1.88	96.40	NP
	10/09/19	<1.0	<1.0	<1.0	<2.0	NA	NA	NA		1.35	96.93	NP
	01/16/20	<1.0	<1.0	<1.0	<2.0	NA	NA	NA		1.31	96.97	NP
	04/09/20	<1.0	<1.0	<1.0	<2.0	NA	NA	NA		1.51	96.77	NP
	07/14/20	<1.0	<1.0	<1.0	<2.0	NA	NA	NA		2.62	95.66	NP
	10/27/20	<1.0	<1.0	<1.0	<2.0	NA	NA	NA		1.95	96.33	NP
	01/08/21	<1.0	<1.0	<1.0	<2.0	NA	NA	NA		1.77	96.51	NP
	04/26/21	<1.0	<1.0	<1.0	<2.0	NA	NA	NA		1.27	97.01	NP
	07/21/21	<1.0	<1.0	<1.0	<2.0	NA	NA	NA		1.85	96.43	NP
	10/28/21	<1.0	<1.0	<1.0	<2.0	<1.0	<1.0	<1.0		1.53	96.75	NP
	01/19/22	<1.0	<1.0	<1.0	<2.0	<1.0	<1.0	<1.0		1.40	96.88	NP
	04/20/22	<1.0	<1.0	<1.0	<2.0	<1.0	<1.0	<1.0		1.82	96.46	NP
MW-19	07/09/13	<1.0	<1.0	<1.0	<1.0	NA	NA	NA	98.47	1.71	96.76	NP
	07/19/13	NS	NS	NS	NS	NA	NA	NA		1.1	97.37	NP
	10/18/13	<1	<1	<1	<1	NA	NA	NA		1.78	96.69	NP

SAMPLE LOCATION	DATE	BENZENE (µg/L)	TOLUENE (µg/L)	ETHYL BENZENE (µg/L)	TOTAL XYLENES (µg/L)	NAPHTHALENE (µg/L)	1,2,4 TRIMETHYL-BENZENE (µg/L)	1,3,5 TRIMETHYL-BENZENE (µg/L)	TOC ELEVATION (feet)	DEPTH TO GROUND WATER (ft)	GROUND WATER ELEVATION (ft)	FREE PRODUCT THICKNESS (ft)
MW-19	01/13/14	<1	<1	<1	<1	NA	NA	NA	98.47	1.33	97.14	NP
	04/02/14	<1	<1	<1	<1	NA	NA	NA		1.84	96.63	NP
	07/15/14	<1.0	<1.0	<1.0	<1.0	NA	NA	NA		1.65	96.82	NP
	10/07/14	<1.0	<1.0	<1.0	<1.0	NA	NA	NA		0.99	97.48	NP
	01/20/15	<1.0	<1.0	<1.0	<1.0	NA	NA	NA		1.01	97.46	NP
	04/20/15	<1.0	<1.0	<1.0	<1.0	NA	NA	NA		1.24	97.23	NP
MW-20	07/19/13	<1.0	<1.0	<1.0	<1.0	NA	NA	NA	99.40	1.33	98.07	NP
	10/18/13	<1	<1	<1	<1	NA	NA	NA		1.51	97.89	NP
	01/13/14	<1	<1	<1	<1	NA	NA	NA		2.11	97.29	NP
	04/02/14	<1	<1	<1	<1	NA	NA	NA		2.57	96.83	NP
	07/15/14	8.4	<1.0	<1.0	<1.0	NA	NA	NA		2.32	97.08	NP
	10/07/14	<1.0	<1.0	<1.0	<1.0	NA	NA	NA		1.70	97.70	NP
	01/20/15	<1.0	<1.0	<1.0	<1.0	NA	NA	NA		1.71	97.69	NP
	04/20/15	<1.0	<1.0	<1.0	<1.0	NA	NA	NA		1.95	97.45	NP
MW-21	07/19/13	<1.0	<1.0	<1.0	<1.0	NA	NA	NA	99.31	1.67	97.64	NP
	10/18/13	<1	<1	<1	<1	NA	NA	NA		1.51	97.80	NP
	01/13/14	<1	<1	<1	<1	NA	NA	NA		2.10	97.21	NP
	04/02/14	<1	<1	<1	<1	NA	NA	NA		2.56	96.75	NP
	07/15/14	<1.0	<1.0	<1.0	<1.0	NA	NA	NA		2.33	96.98	NP
	10/07/14	<1.0	<1.0	<1.0	<1.0	NA	NA	NA		1.71	97.60	NP
	01/20/15	<1.0	<1.0	<1.0	<1.0	NA	NA	NA		1.73	97.58	NP
	04/20/15	<1.0	<1.0	<1.0	<1.0	NA	NA	NA		1.96	97.35	NP
MW-22	07/19/13	<1.0	<1.0	<1.0	<1.0	NA	NA	NA	99.12	2.01	97.11	NP
	10/18/13	<1	<1	<1	<1	NA	NA	NA		1.73	97.39	NP
	01/13/14	<1	<1	<1	<1	NA	NA	NA		2.01	97.11	NP
	04/02/14	<1	<1	<1	<1	NA	NA	NA		2.49	96.63	NP
	07/15/14	<1.0	<1.0	<1.0	<1.0	NA	NA	NA		2.30	96.82	NP
	10/07/14	<1.0	<1.0	<1.0	<1.0	NA	NA	NA		1.85	97.27	NP
	01/20/15	<1.0	<1.0	<1.0	<1.0	NA	NA	NA		1.86	97.26	NP
	04/20/15	<1.0	<1.0	<1.0	<1.0	NA	NA	NA		2.09	97.03	NP
	07/20/15	<1.0	<1.0	<1.0	<1.0	NA	NA	NA		1.10	98.02	NP
	10/28/15	<1.0	<1.0	<1.0	<1.0	NA	NA	NA		0.59	98.53	NP
	01/29/16	<1.0	<1.0	<1.0	<1.0	NA	NA	NA		1.79	97.33	NP
	04/28/16	<1.0	<1.0	<1.0	<1.0	NA	NA	NA		too shallow	too shallow	NP
	07/26/16	<1.0	<1.0	<1.0	<1.0	NA	NA	NA		1.80	97.32	NP
	10/18/16	<1.0	<1.0	<1.0	<1.0	NA	NA	NA		0.99	98.13	NP
	01/06/17	<1.0	<1.0	<1.0	<1.0	NA	NA	NA		2.07	97.05	NP
	04/05/17	<1.0	<1.0	<1.0	<1.0	NA	NA	NA		2.45	96.67	NP

SAMPLE LOCATION	DATE	BENZENE (µg/L)	TOLUENE (µg/L)	ETHYL BENZENE (µg/L)	TOTAL XYLENES (µg/L)	NAPHTHALENE (µg/L)	1,2,4 TRIMETHYL-BENZENE (µg/L)	1,3,5 TRIMETHYL-BENZENE (µg/L)	TOC ELEVATION (feet)	DEPTH TO GROUND WATER (ft)	GROUND WATER ELEVATION (ft)	FREE PRODUCT THICKNESS (ft)
MW-22	07/25/17	<1.0	<1.0	<1.0	<1.0	NA	NA	NA	99.12	2.34	96.78	NP
	10/12/17	<1.0	<1.0	<1.0	<1.0	NA	NA	NA		0.88	99.66	NP
	01/25/18	<1.0	<1.0	<1.0	<2.0	NA	NA	NA		2.05	97.07	NP
	04/06/18	<1.0	<1.0	<1.0	<2.0	NA	NA	NA		2.25	96.87	NP
	07/09/18	<1.0	<1.0	<1.0	2.8	NA	NA	NA		2.47	96.65	NP
	10/12/18	<1.0	<1.0	<1.0	<2.0	NA	NA	NA		2.42	96.70	NP
	01/29/19	<1.0	<1.0	<1.0	<2.0	NA	NA	NA		2.26	96.86	NP
	04/16/19	<1.0	<1.0	<1.0	<2.0	NA	NA	NA		2.17	96.95	NP
	07/16/19	<1.0	<1.0	<1.0	<2.0	NA	NA	NA		2.72	96.40	NP
	10/09/19	<1.0	<1.0	<1.0	<2.0	NA	NA	NA		2.33	96.79	NP
	01/16/20	<1.0	<1.0	<1.0	<2.0	NA	NA	NA		2.15	96.97	NP
	04/09/20	<1.0	<1.0	<1.0	<2.0	NA	NA	NA		2.33	96.79	NP
	07/14/20	<1.0	<1.0	<1.0	<2.0	NA	NA	NA		3.42	95.70	NP
	10/27/20	<1.0	<1.0	<1.0	<2.0	NA	NA	NA		2.75	96.37	NP
	01/08/21	<1.0	<1.0	<1.0	<2.0	NA	NA	NA		2.56	96.56	NP
	04/26/21	<1.0	<1.0	<1.0	<2.0	NA	NA	NA		2.16	96.96	NP
	07/21/21	<1.0	<1.0	<1.0	<2.0	NA	NA	NA		2.62	96.50	NP
	10/28/21	<1.0	<1.0	<1.0	<2.0	<1.0	<1.0	<1.0		2.30	96.82	NP
	01/19/22	<1.0	<1.0	<1.0	<2.0	<1.0	<1.0	<1.0		2.20	96.92	NP
	04/20/22	<1.0	<1.0	<1.0	<2.0	<1.0	<1.0	<1.0		2.24	96.88	NP
MW-23	07/19/13	<1.0	<1.0	<1.0	<1.0	NA	NA	NA	98.77	1.41	97.36	NP
	10/18/13	<1	<1	<1	<1	NA	NA	NA		0.98	97.79	NP
	01/13/14	<1	<1	<1	<1	NA	NA	NA		1.52	97.25	NP
	04/02/14	<1	<1	<1	<1	NA	NA	NA		2.01	96.76	NP
	07/15/14	<1.0	<1.0	<1.0	<1.0	NA	NA	NA		1.82	96.95	NP
	10/07/14	<1.0	<1.0	<1.0	<1.0	NA	NA	NA		1.16	97.61	NP
	01/20/15	<1.0	<1.0	<1.0	<1.0	NA	NA	NA		1.18	97.59	NP
	04/20/15	<1.0	<1.0	<1.0	<1.0	NA	NA	NA		1.42	97.35	NP
	07/20/15	<1.0	<1.0	<1.0	<1.0	NA	NA	NA		1.62	97.15	NP
	10/28/15	<1.0	<1.0	<1.0	<1.0	NA	NA	NA		1.10	97.67	NP
	01/29/16	<1.0	<1.0	<1.0	<1.0	NA	NA	NA		2.32	96.45	NP
	04/28/16	<1.0	<1.0	<1.0	<1.0	NA	NA	NA		1.06	97.71	NP
	07/26/16	<1.0	<1.0	<1.0	<1.0	NA	NA	NA		1.99	96.78	NP
	10/18/16	<1.0	<1.0	<1.0	<1.0	NA	NA	NA		1.19	97.58	NP
	01/06/17	<1.0	<1.0	<1.0	<1.0	NA	NA	NA		2.27	96.50	NP
	04/05/17	<1.0	<1.0	<1.0	<1.0	NA	NA	NA		2.63	96.14	NP
	07/25/17	<1.0	<1.0	<1.0	<1.0	NA	NA	NA		2.53	96.24	NP
	10/12/17	<1.0	<1.0	<1.0	<1.0	NA	NA	NA		1.07	99.66	NP
	01/25/18	<1.0	<1.0	<1.0	<2.0	NA	NA	NA		1.45	97.32	NP

SAMPLE LOCATION	DATE	BENZENE (µg/L)	TOLUENE (µg/L)	ETHYL BENZENE (µg/L)	TOTAL XYLENES (µg/L)	NAPHTHALENE (µg/L)	1,2,4 TRIMETHYL-BENZENE (µg/L)	1,3,5 TRIMETHYL-BENZENE (µg/L)	TOC ELEVATION (feet)	DEPTH TO GROUND WATER (ft)	GROUND WATER ELEVATION (ft)	FREE PRODUCT THICKNESS (ft)
MW-23	04/06/18	<1.0	<1.0	<1.0	<2.0	NA	NA	NA	98.77	1.75	97.02	NP
	07/09/18	<1.0	<1.0	<1.0	<2.0	NA	NA	NA		1.97	96.80	NP
	10/12/18	<1.0	<1.0	<1.0	<2.0	NA	NA	NA		1.93	96.84	NP
	01/29/19	<1.0	<1.0	<1.0	<2.0	NA	NA	NA		1.76	97.01	NP
	04/16/19	<1.0	<1.0	<1.0	<2.0	NA	NA	NA		1.86	96.91	NP
	07/16/19	<1.0	<1.0	<1.0	<2.0	NA	NA	NA		2.25	96.52	NP
	10/09/19	<1.0	<1.0	<1.0	<2.0	NA	NA	NA		1.69	97.08	NP
	01/16/20	<1.0	<1.0	<1.0	<2.0	NA	NA	NA		1.63	97.14	NP
	04/09/20	<1.0	<1.0	<1.0	<2.0	NA	NA	NA		1.83	96.94	NP
	07/14/20	<1.0	<1.0	<1.0	<2.0	NA	NA	NA		2.92	95.85	NP
	10/27/20	<1.0	<1.0	<1.0	<2.0	NA	NA	NA		2.21	96.56	NP
	01/08/21	<1.0	<1.0	<1.0	<2.0	NA	NA	NA		2.07	96.70	NP
	04/26/21	<1.0	<1.0	<1.0	<2.0	NA	NA	NA		1.65	97.12	NP
	07/21/21	<1.0	<1.0	<1.0	<2.0	NA	NA	NA		2.15	96.62	NP
	10/28/21	<1.0	<1.0	<1.0	<2.0	<1.0	<1.0	<1.0		1.81	96.96	NP
	01/19/22	<1.0	<1.0	<1.0	<2.0	<1.0	<1.0	<1.0		1.72	97.05	NP
	04/20/22	<1.0	<1.0	<1.0	<2.0	<1.0	<1.0	<1.0		2.17	96.60	NP
MW-24	07/19/13	2.4	<1.0	36.6	1,364	NA	NA	NA	99.08	1.57	97.51	NP
	10/18/13	<1	<1	<1	<1	NA	NA	NA		1.20	97.88	NP
	01/13/14	3.3	<1	23.7	64.4	NA	NA	NA		1.74	97.34	NP
	04/02/14	1.9	<1	10.3	35.7	NA	NA	NA		2.23	96.85	NP
	07/15/14	<1.0	<1.0	4.0	1.4	NA	NA	NA		2.01	97.07	NP
	10/07/14	<1.0	<1.0	<1.0	1.5	NA	NA	NA		1.40	97.68	NP
	01/20/15	<1.0	<1.0	<1.0	<1.0	NA	NA	NA		1.39	97.69	NP
	04/20/15	<1.0	<1.0	<1.0	4.6	NA	NA	NA		1.62	97.46	NP
	07/20/15	<1.0	<1.0	<1.0	<1.0	NA	NA	NA		1.82	97.26	NP
	10/28/15	<1.0	<1.0	<1.0	<1.0	NA	NA	NA		1.30	97.78	NP
	01/29/16	<1.0	<1.0	<1.0	<1.0	NA	NA	NA		2.51	96.57	NP
	04/28/16	<1.0	<1.0	<1.0	<1.0	NA	NA	NA		1.25	97.83	NP
	07/26/16	<1.0	<1.0	<1.0	<1.0	NA	NA	NA		2.18	96.90	NP
	10/18/16	<1.0	<1.0	<1.0	<1.0	NA	NA	NA		1.36	97.72	NP
	01/06/17	2.3	<1.0	<1.0	6.4	NA	NA	NA		2.49	96.59	NP
	04/05/17	2.3	<1.0	3.6	30	NA	NA	NA		2.84	96.24	NP
	07/25/17	<1.0	<1.0	<1.0	<1.0	NA	NA	NA		2.75	96.33	NP
	10/12/17	<1.0	<1.0	<1.0	<1.0	NA	NA	NA		1.27	99.66	NP
	01/25/18	<1.0	<1.0	<1.0	<2.0	NA	NA	NA		1.65	97.43	NP
	04/06/18	<1.0	<1.0	<1.0	1200	NA	NA	NA		2.00	97.08	NP
	07/09/18	NS	NS	NS	NS	NA	NA	NA		DRY	DRY	DRY
	10/12/18	<1.0	<1.0	<1.0	<2.0	NA	NA	NA		2.10	96.98	NP

SAMPLE LOCATION	DATE	BENZENE (µg/L)	TOLUENE (µg/L)	ETHYL BENZENE (µg/L)	TOTAL XYLENES (µg/L)	NAPHTHALENE (µg/L)	1,2,4 TRIMETHYL-BENZENE (µg/L)	1,3,5 TRIMETHYL-BENZENE (µg/L)	TOC ELEVATION (feet)	DEPTH TO GROUND WATER (ft)	GROUND WATER ELEVATION (ft)	FREE PRODUCT THICKNESS (ft)
MW-24	01/29/19	<1.0	<1.0	<1.0	<2.0	NA	NA	NA	99.08	3.26	95.82	NP
	04/16/19	<1.0	<1.0	13	32	NA	NA	NA		3.35	95.73	NP
	07/16/19	<1.0	<1.0	3.1	5.4	NA	NA	NA		3.20	95.88	NP
	10/09/19	<1.0	<1.0	<1.0	2.5	NA	NA	NA		1.90	97.18	NP
	01/16/20	<1.0	<1.0	<1.0	4.1	NA	NA	NA		3.30	95.78	NP
	04/09/20	<1.0	<1.0	1.4	12	NA	NA	NA		2.35	96.73	NP
	07/14/20	<1.0	<1.0	3.8	2.4	NA	NA	NA		3.36	95.72	NP
	10/27/20	<1.0	<1.0	<1.0	<2.0	NA	NA	NA		2.60	96.48	NP
	01/08/21	<1.0	<1.0	<1.0	<2.0	NA	NA	NA		2.91	96.17	NP
	04/26/21	<1.0	<1.0	1.2	<2.0	NA	NA	NA		2.04	97.04	NP
	07/21/21	<1.0	<1.0	1.8	2.3	NA	NA	NA		2.55	96.53	NP
	10/28/21	<1.0	<1.0	1.8	2.3	<1.0	<1.0	<1.0		2.33	96.75	NP
	01/19/22	<1.0	<1.0	3.3	<2.0	11	660	2.3		2.45	96.63	NP
	04/20/22	<1.0	<1.0	<1.0	<2.0	<1.0	48	<1.0		2.60	96.48	NP
MW-25	07/19/13	803	<1.0	473	10,322	NA	NA	NA	99.36	1.96	97.40	NP
	10/18/13	435	<1	119	1572	NA	NA	NA		1.49	97.87	NP
	01/13/14	47.8	<1	6.3	159	NA	NA	NA		2.03	97.33	NP
	04/02/14	44.1	<1	24.3	200	NA	NA	NA		2.58	96.78	NP
	07/15/14	115	<1.0	39.2	120	NA	NA	NA		2.35	97.01	NP
	10/07/14	57.1	<1.0	9.3	12.1	NA	NA	NA		1.69	97.67	NP
	01/20/15	36.2	<1.0	5.1	44.6	NA	NA	NA		1.71	97.65	NP
	04/20/15	16	<1.0	1.2	5.0	NA	NA	NA		1.94	97.42	NP
	07/20/15	5.8	<1.0	<1.0	<1.0	NA	NA	NA		2.15	97.21	NP
	10/28/15	13	<1.0	<1.0	<1.0	NA	NA	NA		1.63	97.73	NP
	01/29/16	Damaged	Damaged	Damaged	Damaged	NA	NA	NA		Damaged	Damaged	Damaged
	03/17/16	83	<1.0	2.1	24	NA	NA	NA		NM	NM	NP
	04/28/16	7.3	<1.0	<1.0	4.0	NA	NA	NA		too shallow	too shallow	NP
	07/26/16	2.7	<1.0	<1.0	<1.0	NA	NA	NA		1.80	97.56	NP
	10/18/16	<1.0	<1.0	<1.0	<1.0	NA	NA	NA		0.98	98.38	NP
	01/06/17	<1.0	<1.0	<1.0	<1.0	NA	NA	NA		2.07	97.29	NP
	04/05/17	51	<1.0	2.1	18	NA	NA	NA		2.46	96.90	NP
	07/25/17	1.4	<1.0	<1.0	<1.0	NA	NA	NA		2.34	97.02	NP
	10/12/17	<1.0	<1.0	<1.0	<1.0	NA	NA	NA		0.86	99.66	NP
	01/25/18	<1.0	<1.0	<1.0	2.3	NA	NA	NA		1.96	97.40	NP
	04/06/18	5.6	<1.0	<1.0	3900	NA	NA	NA		2.33	97.03	NP
	07/09/18	13	<1.0	<1.0	<2.0	NA	NA	NA		2.49	96.87	NP
	10/12/18	<1.0	<1.0	<1.0	<2.0	NA	NA	NA		2.42	96.94	NP
	01/29/19	<1.0	<1.0	<1.0	<2.0	NA	NA	NA		2.33	97.03	NP
	04/16/19	<1.0	<1.0	<1.0	<2.0	NA	NA	NA		2.19	97.17	NP

SAMPLE LOCATION	DATE	BENZENE (µg/L)	TOLUENE (µg/L)	ETHYL BENZENE (µg/L)	TOTAL XYLENES (µg/L)	NAPHTHALENE (µg/L)	1,2,4 TRIMETHYL-BENZENE (µg/L)	1,3,5 TRIMETHYL-BENZENE (µg/L)	TOC ELEVATION (feet)	DEPTH TO GROUND WATER (ft)	GROUND WATER ELEVATION (ft)	FREE PRODUCT THICKNESS (ft)
MW-25	07/16/19	11	<1.0	1.7	20	NA	NA	NA	99.36	2.69	96.67	NP
	10/09/19	29	<1.0	<1.0	2.6	NA	NA	NA		2.22	97.14	NP
	01/16/20	17	<1.0	<1.0	5.2	NA	NA	NA		2.13	97.23	NP
	04/09/20	11	<1.0	2.4	640	NA	NA	NA		2.35	97.01	NP
	07/14/20	19	<1.0	2.8	320	NA	NA	NA		3.35	96.01	NP
	10/27/20	<1.0	<1.0	<1.0	<2.0	NA	NA	NA		2.82	96.54	NP
	01/08/21	<1.0	<1.0	<1.0	<2.0	NA	NA	NA		2.61	96.75	NP
	04/26/21	<1.0	<1.0	<1.0	<2.0	NA	NA	NA		2.25	97.11	NP
	07/21/21	9.6	<1.0	<1.0	<2.0	NA	NA	NA		2.50	96.86	NP
	10/28/21	<1.0	<1.0	<1.0	<2.0	<1.0	<1.0	<1.0		2.29	97.07	NP
	01/19/22	3.2	<1.0	<1.0	<2.0	<1.0	2.1	<1.0		2.20	97.16	NP
	04/20/22	<1.0	<1.0	<1.0	<2.0	<1.0	<1.0	<1.0		2.65	96.71	NP
MW-26	07/19/13	198	<1.0	344	2,547	NA	NA	NA	99.30	1.88	97.42	NP
	10/18/13	109	<1	83.9	894	NA	NA	NA		1.49	97.81	NP
	01/13/14	<1	<1	<1	<1	NA	NA	NA		2.01	97.29	NP
	04/02/14	<1	<1	<1	<1	NA	NA	NA		2.54	96.76	NP
	07/15/14	<1.0	<1.0	<1.0	<1.0	NA	NA	NA		2.29	97.01	NP
	10/07/14	2.7	<1.0	<1.0	1.2	NA	NA	NA		1.64	97.66	NP
	01/20/15	<1.0	<1.0	<1.0	<1.0	NA	NA	NA		1.65	97.65	NP
	04/20/15	13	<1.0	2.0	8.0	NA	NA	NA		1.88	97.42	NP
	07/20/15	3.1	<1.0	<1.0	<1.0	NA	NA	NA		2.11	97.19	NP
	10/28/15	20	<1.0	13	49	NA	NA	NA		1.60	97.70	NP
	01/29/16	Damaged	Damaged	Damaged	Damaged	NA	NA	NA		Damaged	Damaged	Damaged
	03/17/16	23	<1.0	2.2	59	NA	NA	NA		NM	NM	NP
	04/28/16	60	<1.0	20	110	NA	NA	NA		too shallow	too shallow	NP
	07/26/16	40	<1.0	6.3	17	NA	NA	NA		1.79	97.51	NP
	10/18/16	2.8	<1.0	10	190	NA	NA	NA		0.98	98.32	NP
	01/06/17	29	<1.0	5.2	57	NA	NA	NA		2.06	97.24	NP
	04/05/17	38	<1.0	6.5	75	NA	NA	NA		2.44	96.86	NP
	07/25/17	<1.0	<1.0	<1.0	<1.0	NA	NA	NA		2.21	97.09	NP
	10/12/17	<1.0	<1.0	<1.0	<1.0	NA	NA	NA		0.75	99.66	NP
	01/25/18	<1.0	<1.0	<1.0	72	NA	NA	NA		2.00	97.30	NP
	04/06/18	130	<1.0	1.2	6900	NA	NA	NA		2.32	96.98	NP
	07/09/18	3.2	<1.0	5.7	50	NA	NA	NA		2.58	96.72	NP
	10/12/18	<1.0	<1.0	<1.0	2.4	NA	NA	NA		2.43	96.87	NP
	01/29/19	<1.0	<1.0	<1.0	6.7	NA	NA	NA		2.27	97.03	NP
	04/16/19	1.6	<1.0	1.4	13	NA	NA	NA		2.19	97.11	NP
	07/16/19	1.8	<1.0	1.2	17	NA	NA	NA		2.55	96.75	NP
	10/09/19	<1.0	<1.0	1.2	47	NA	NA	NA		2.23	97.07	NP

SAMPLE LOCATION	DATE	BENZENE (µg/L)	TOLUENE (µg/L)	ETHYL BENZENE (µg/L)	TOTAL XYLENES (µg/L)	NAPHTHALENE (µg/L)	1,2,4 TRIMETHYL-BENZENE (µg/L)	1,3,5 TRIMETHYL-BENZENE (µg/L)	TOC ELEVATION (feet)	DEPTH TO GROUND WATER (ft)	GROUND WATER ELEVATION (ft)	FREE PRODUCT THICKNESS (ft)
MW-26	01/16/20	<1.0	<1.0	11	<2.0	NA	NA	NA	99.30	2.18	97.12	NP
	04/09/20	1.2	<1.0	<1.0	<2.0	NA	NA	NA		2.36	96.94	NP
	07/14/20	3.5	<1.0	<1.0	<2.0	NA	NA	NA		3.34	95.96	NP
	10/27/20	1.6	<1.0	<1.0	6.4	NA	NA	NA		2.78	96.52	NP
	01/08/21	<1.0	<1.0	<1.0	29	NA	NA	NA		2.61	96.69	NP
	04/26/21	<1.0	<1.0	1.2	4.2	NA	NA	NA		2.15	97.15	NP
	07/21/21	1.5	<1.0	1.2	41	NA	NA	NA		2.63	96.67	NP
	10/28/21	2.0	<1.0	<1.0	<1.0	<1.0	12	<1.0		2.31	96.99	NP
	01/19/22	3.6	<1.0	3.2	29	1.5	41	1.6		2.26	97.04	NP
	04/20/22	<1.0	<1.0	<1.0	<2.0	<1.0	2.8	<1.0		2.74	96.56	NP
MW-27	07/19/13	<1.0	<1.0	<1.0	<1.0	NA	NA	NA	98.40	0.91	97.49	NP
	10/18/13	<1	<1	<1	<1	NA	NA	NA		0.7	97.70	NP
	01/13/14	<1	<1	<1	<1	NA	NA	NA		1.23	97.17	NP
	04/02/14	<1	<1	<1	<1	NA	NA	NA		1.73	96.67	NP
	07/15/14	<1.0	<1.0	<1.0	<1.0	NA	NA	NA		3.41	94.99	NP
	10/07/14	<1.0	<1.0	<1.0	<1.0	NA	NA	NA		0.87	97.53	NP
	01/20/15	<1.0	<1.0	<1.0	<1.0	NA	NA	NA		0.89	97.51	NP
	04/20/15	<1.0	<1.0	<1.0	<1.0	NA	NA	NA		1.12	97.28	NP
MW-28	07/19/13	<1.0	<1.0	<1.0	<1.0	NA	NA	NA	98.64	1.14	97.50	NP
	10/18/13	<1	<1	<1	<1	NA	NA	NA		0.79	97.85	NP
	01/13/14	<1	<1	<1	<1	NA	NA	NA		1.28	97.36	NP
	04/02/14	<1	<1	<1	<1	NA	NA	NA		1.79	96.85	NP
	07/15/14	<1.0	<1.0	<1.0	<1.0	NA	NA	NA		1.59	97.05	NP
	10/07/14	<1.0	<1.0	<1.0	<1.0	NA	NA	NA		0.95	97.69	NP
	01/20/15	<1.0	<1.0	<1.0	<1.0	NA	NA	NA		0.96	97.68	NP
	04/20/15	<1.0	<1.0	<1.0	<1.0	NA	NA	NA		1.19	97.45	NP
	07/20/15	<1.0	<1.0	<1.0	<1.0	NA	NA	NA		1.38	97.26	NP
	10/28/15	<1.0	<1.0	<1.0	<1.0	NA	NA	NA		0.87	97.77	NP
	01/29/16	<1.0	<1.0	<1.0	<1.0	NA	NA	NA		2.07	96.57	NP
	04/28/16	<1.0	<1.0	<1.0	<1.0	NA	NA	NA		too shallow	too shallow	NP
	07/26/16	<1.0	<1.0	<1.0	<1.0	NA	NA	NA		1.82	96.82	NP
	10/18/16	<1.0	<1.0	<1.0	<1.0	NA	NA	NA		1.81	96.83	NP
	01/06/17	<1.0	<1.0	<1.0	<1.0	NA	NA	NA		2.88	95.76	NP
	04/05/17	<1.0	<1.0	<1.0	<1.0	NA	NA	NA		2.49	96.15	NP
	07/25/17	<1.0	<1.0	<1.0	<1.0	NA	NA	NA		2.27	96.37	NP
	10/12/17	<1.0	<1.0	<1.0	<1.0	NA	NA	NA		0.81	99.66	NP
	01/25/18	<1.0	<1.0	<1.0	<2.0	NA	NA	NA		1.23	97.41	NP
	04/06/18	3.6	<1.0	1.4	840	NA	NA	NA		1.53	97.11	NP
	07/09/18	NS	NS	NS	NS	NA	NA	NA		DRY	DRY	DRY

SAMPLE LOCATION	DATE	BENZENE (µg/L)	TOLUENE (µg/L)	ETHYL BENZENE (µg/L)	TOTAL XYLENES (µg/L)	NAPHTHALENE (µg/L)	1,2,4 TRIMETHYL-BENZENE (µg/L)	1,3,5 TRIMETHYL-BENZENE (µg/L)	TOC ELEVATION (feet)	DEPTH TO GROUND WATER (ft)	GROUND WATER ELEVATION (ft)	FREE PRODUCT THICKNESS (ft)
MW-28	10/12/18	<1.0	<1.0	<1.0	<2.0	NA	NA	NA	98.64	1.64	97.00	NP
	01/29/19	<1.0	<1.0	<1.0	<2.0	NA	NA	NA		2.15	96.49	NP
	04/16/19	<1.0	<1.0	<1.0	<2.0	NA	NA	NA		2.29	96.35	NP
	07/16/19	<1.0	<1.0	<1.0	<2.0	NA	NA	NA		2.26	96.38	NP
	10/09/19	<1.0	<1.0	<1.0	<2.0	NA	NA	NA		1.41	97.23	NP
	01/16/20	<1.0	<1.0	<1.0	<2.0	NA	NA	NA		2.26	96.38	NP
	04/09/20	<1.0	<1.0	<1.0	<2.0	NA	NA	NA		2.06	96.58	NP
	07/14/20	<1.0	<1.0	<1.0	<2.0	NA	NA	NA		2.21	96.43	NP
	10/27/20	<1.0	<1.0	<1.0	<2.0	NA	NA	NA		2.25	96.39	NP
	01/08/21	<1.0	<1.0	<1.0	<2.0	NA	NA	NA		2.45	96.19	NP
	04/26/21	<1.0	<1.0	<1.0	<2.0	NA	NA	NA		2.13	96.51	NP
	07/21/21	<1.0	<1.0	<1.0	<2.0	NA	NA	NA		2.82	95.82	NP
	10/28/21	<1.0	<1.0	<1.0	<2.0	<1.0	<1.0	<1.0		2.04	96.60	NP
	01/19/22	<1.0	<1.0	<1.0	<2.0	<1.0	<1.0	<1.0		1.19	97.45	NP
	04/20/22	<1.0	<1.0	<1.0	<2.0	<1.0	<1.0	<1.0		2.26	96.38	NP
MW-29	07/19/13	<1.0	<1.0	<1.0	<1.0	NA	NA	NA	101.04	3.45	97.59	NP
	10/18/13	<1	<1	<1	<1	NA	NA	NA		3.03	98.01	NP
	01/13/14	<1	<1	<1	<1	NA	NA	NA		3.58	97.46	NP
	04/02/14	<1	<1	<1	<1	NA	NA	NA		4.13	96.91	NP
	07/15/14	<1.0	<1.0	<1.0	<1.0	NA	NA	NA		3.96	97.08	NP
	10/07/14	<1.0	<1.0	<1.0	<1.0	NA	NA	NA		3.32	97.72	NP
	01/20/15	<1.0	<1.0	<1.0	<1.0	NA	NA	NA		NF	NF	NP
	04/20/15	NF	NF	NF	NF	NA	NA	NA		NF	NF	NF
	02/28/22	<1.0	<1.0	<1.0	<2.0	<1.0	<1.0	<1.0	98.88	NM	NM	NP
	04/20/22	<1.0	<1.0	<1.0	<2.0	<1.0	<1.0	<1.0		2.18	96.70	NP
MW-30	07/19/13	<1.0	<1.0	<1.0	<1.0	NA	NA	NA	100.22	2.73	97.49	NP
	10/18/13	<1	<1	<1	<1	NA	NA	NA		2.3	97.92	NP
	01/13/14	<1	<1	<1	<1	NA	NA	NA		2.82	97.40	NP
	04/02/14	<1	<1	<1	<1	NA	NA	NA		3.35	96.87	NP
	07/15/14	<1.0	<1.0	<1.0	<1.0	NA	NA	NA		3.22	97.00	NP
	10/07/14	<1.0	<1.0	<1.0	<1.0	NA	NA	NA		2.59	97.63	NP
	01/20/15	<1.0	<1.0	<1.0	<1.0	NA	NA	NA		2.61	97.61	NP
	04/20/15	<1.0	<1.0	<1.0	<1.0	NA	NA	NA		2.94	97.28	NP
	04/20/22	<1.0	<1.0	<1.0	<2.0	<1.0	<1.0	<1.0		3.16	97.06	NP

SAMPLE LOCATION	DATE	BENZENE (µg/L)	TOLUENE (µg/L)	ETHYL BENZENE (µg/L)	TOTAL XYLENES (µg/L)	NAPHTHALENE (µg/L)	1,2,4 TRIMETHYL- BENZENE (µg/L)	1,3,5 TRIMETHYL- BENZENE (µg/L)	TOC ELEVATION (feet)	DEPTH TO GROUND WATER (ft)	GROUND WATER ELEVATION (ft)	FREE PRODUCT THICKNESS (ft)
MW-31	02/28/22	<1.0	<1.0	<1.0	<2.0	<1.0	<1.0	<1.0	99.15	NM	NM	NP
	04/20/22	<1.0	<1.0	<1.0	<2.0	<1.0	<1.0	<1.0		2.28	96.87	NP
Table 915-1 Standards		5	560	700	1,400	140	67	67				

Bold face values exceed the COGCC limits

NP - No Free Product

NS- Not Sampled

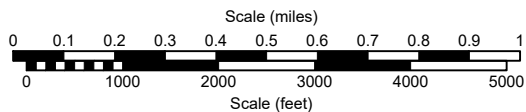
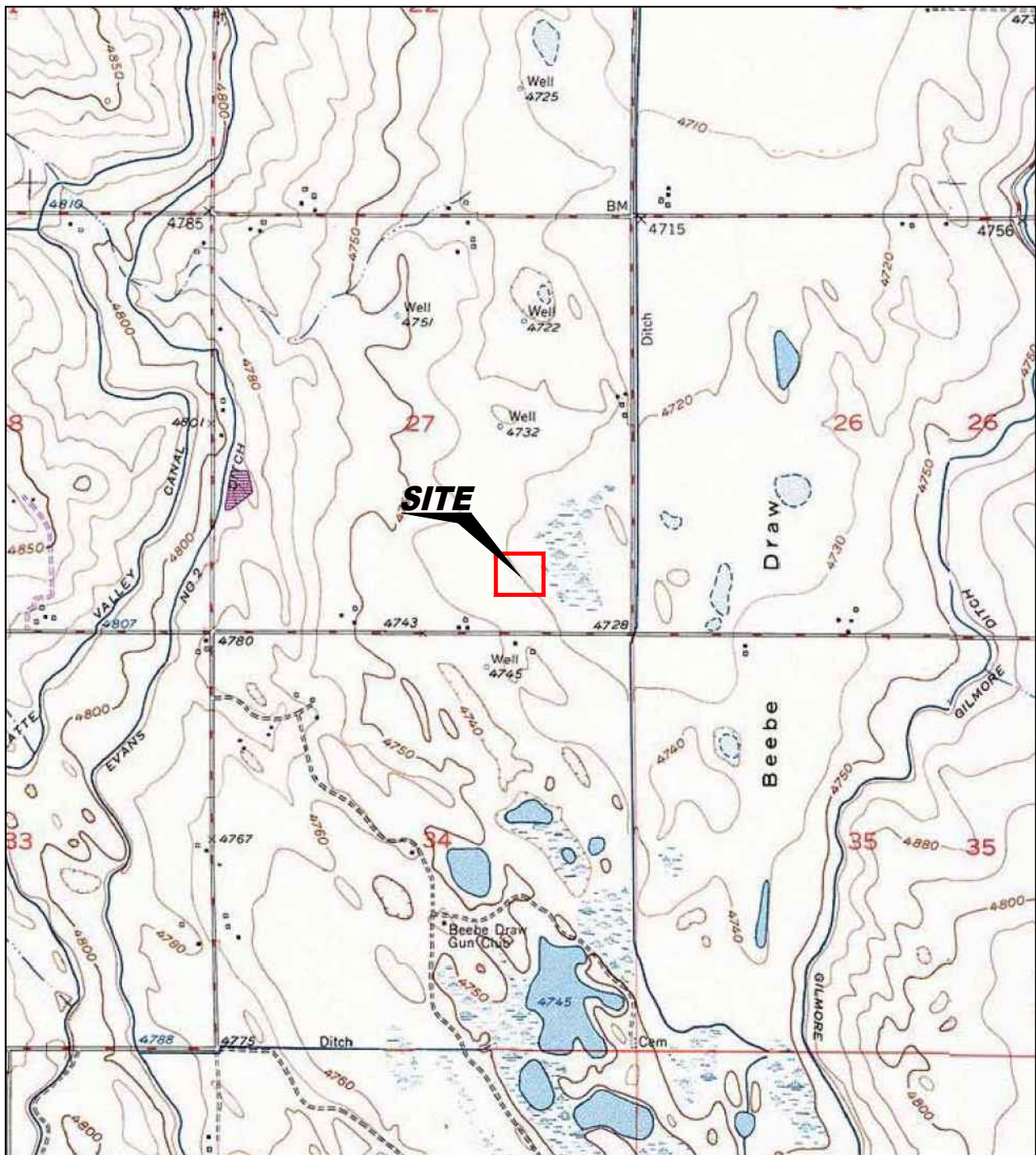
TABLE 2
SUMMARY OF INORGANIC GROUNDWATER CHEMISTRY DATA
NOBLE ENERGY, INC.
LIBSACK R G27-15, WELD COUNTY, COLORADO
FREMONT PROJECT NO. C013-009

SAMPLE LOCATION	DATE	TOTAL DISSOLVED SOLIDS (mg/L)	CHLORIDE ION (mg/L)	SULFATE ION (mg/L)
MW-6	01/19/22	1650	260	202
	04/20/22	1030	330	247
MW-7	01/19/22	1820	305	306
	04/20/22	1640	435	423
MW-13	01/19/22	1890	273	250
	04/20/22	1190	280	296
MW-14	01/19/22	1860	292	207
	04/20/22	1150	290	322
MW-16	01/19/22	2130	373	30.2
	04/20/22	1770	546	433
MW-17R	04/20/22	1550	295	219
MW-18	01/19/22	1250	194	209
	04/20/22	1290	370	389
MW-22	01/19/22	1850	271	322
	04/20/22	1200	281	381
MW-23	01/19/22	1870	287	370
	04/20/22	1080	302	311
MW-24	01/19/22	2530	267	361
	04/20/22	2010	377	81.2

SAMPLE LOCATION	DATE	TOTAL DISSOLVED SOLIDS (mg/L)	CHLORIDE ION (mg/L)	SULFATE ION (mg/L)
MW-25	01/19/22	2110	241	366
	04/20/22	1700	480	288
MW-26	01/19/22	2430	233	386
	04/20/22	1780	463	68.2
MW-28	01/19/22	1980	158	173
	04/20/22	1790	562	473
MW-29R	04/20/22	2070	402	648
MW-30	04/20/22	2570	549	906
MW-31	04/20/22	1940	529	693
Table 915-1 Standards		<1.25 x local background	250 or <1.25 x local background	250 or <1.25 x local background

Bold face values exceed the COGCC limits

Furtherest Upgradient TDS Value Used as Local Background



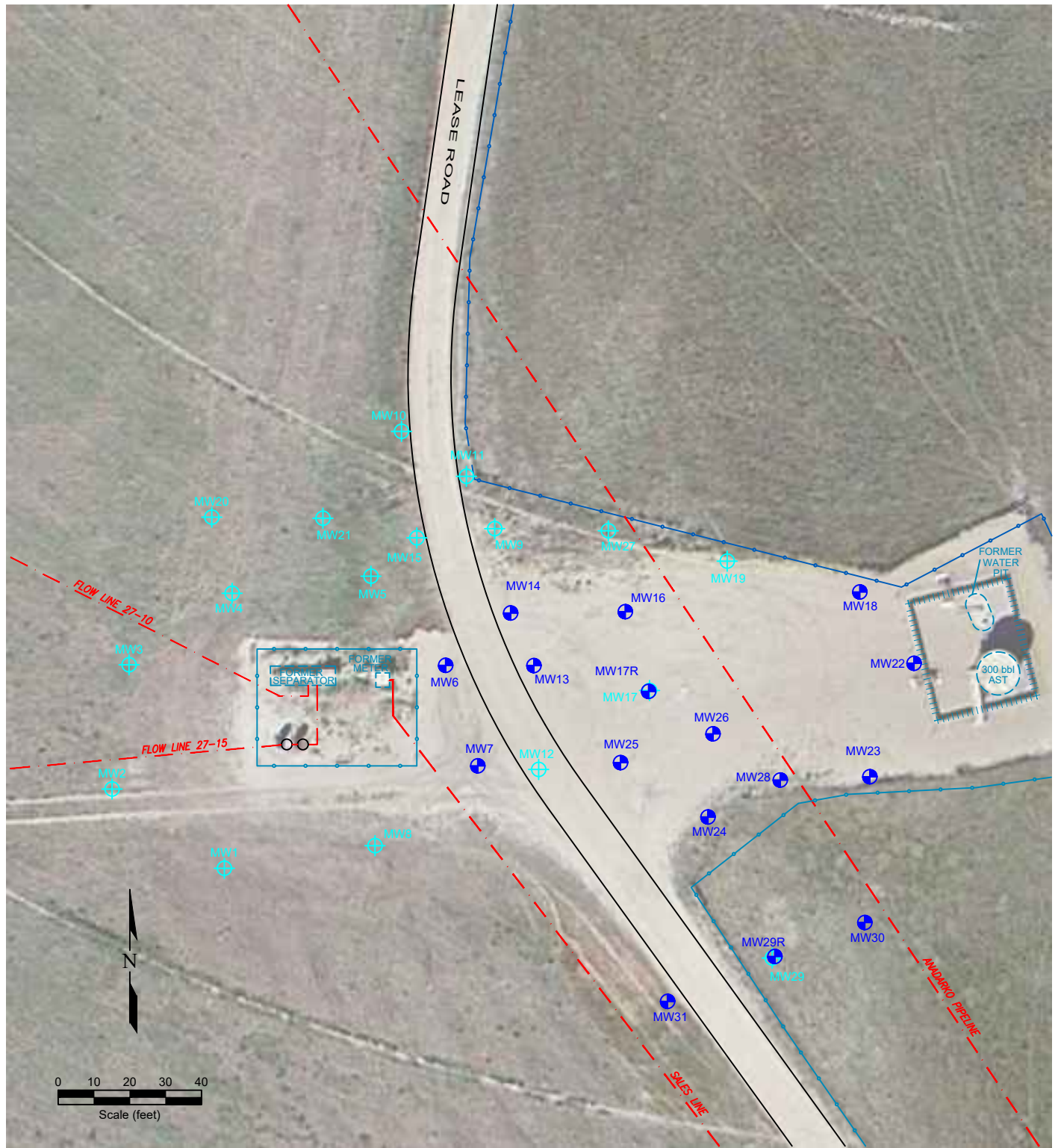
USGS 7.5 MINUTE SERIES (TOPOGRAPHIC)

Figure 1
SITE LOCATION MAP

Noble Energy, Inc. ~ Libsack R G27-15
SWSE Sec. 27, T4N, R65W, 6th PM
Weld County, Colorado
40.278307°, -104.645216°

Project No. C013-009	Prepared by TA	Drawn by TA
Date 5/10/22	Reviewed by EB	Filename 13009T





LEGEND

- | | | | |
|--|---------------------------|--|------------------|
| | MONITORING WELL | | FORMER FACILITY |
| | DESTROYED MONITORING WELL | | FENCE LINE |
| | ABOVE GROUND STORAGE TANK | | PIPELINE |
| | | | CONTAINMENT BERM |

Figure 2
SITE MAP

Noble Energy, Inc. ~ Libsack R G27-15
SWSE Sec. 27, T4N, R65W, 6th PM
 Weld County, Colorado
 40.278307°, -104.645216°

Project No.
C013-009

Prepared by

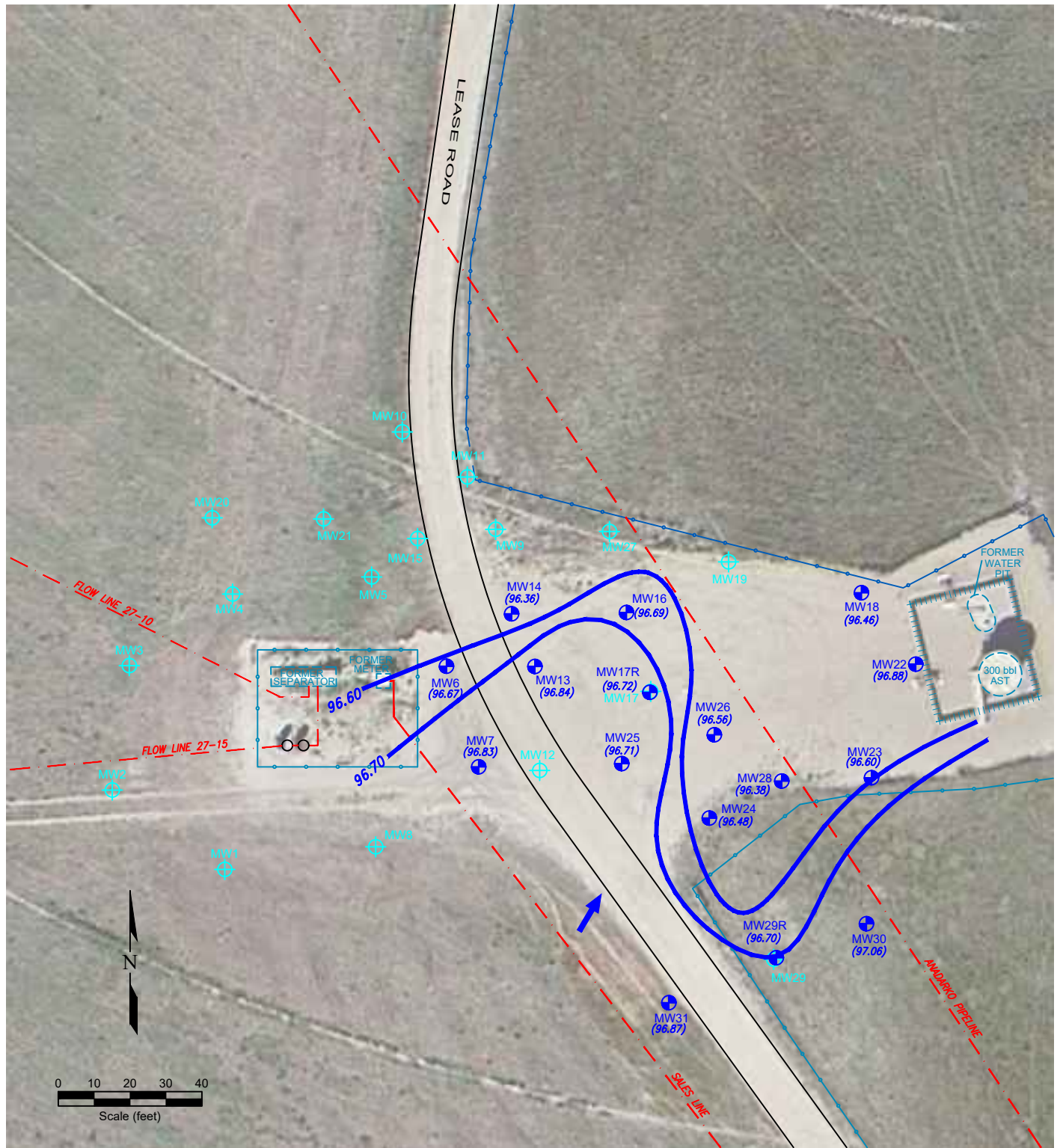
Drawn by
TA

Date
5/10/22

Reviewed by
EB

Filename
13009R





LEGEND

- ⊕ MONITORING WELL
- ⊕ DESTROYED MONITORING WELL
- ABOVE GROUND STORAGE TANK
- FORMER FORMER FACILITY
- FENCE LINE
- PIPELINE
- ||||| CONTAINMENT BERM

NOT USED FOR CONTOURING
GROUND WATER ELEVATION
GROUND WATER FLOW DIRECTION
WATER TABLE CONTOUR

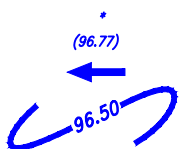


Figure 3

INFERRED GROUNDWATER CONTOUR MAP


April 20, 2022

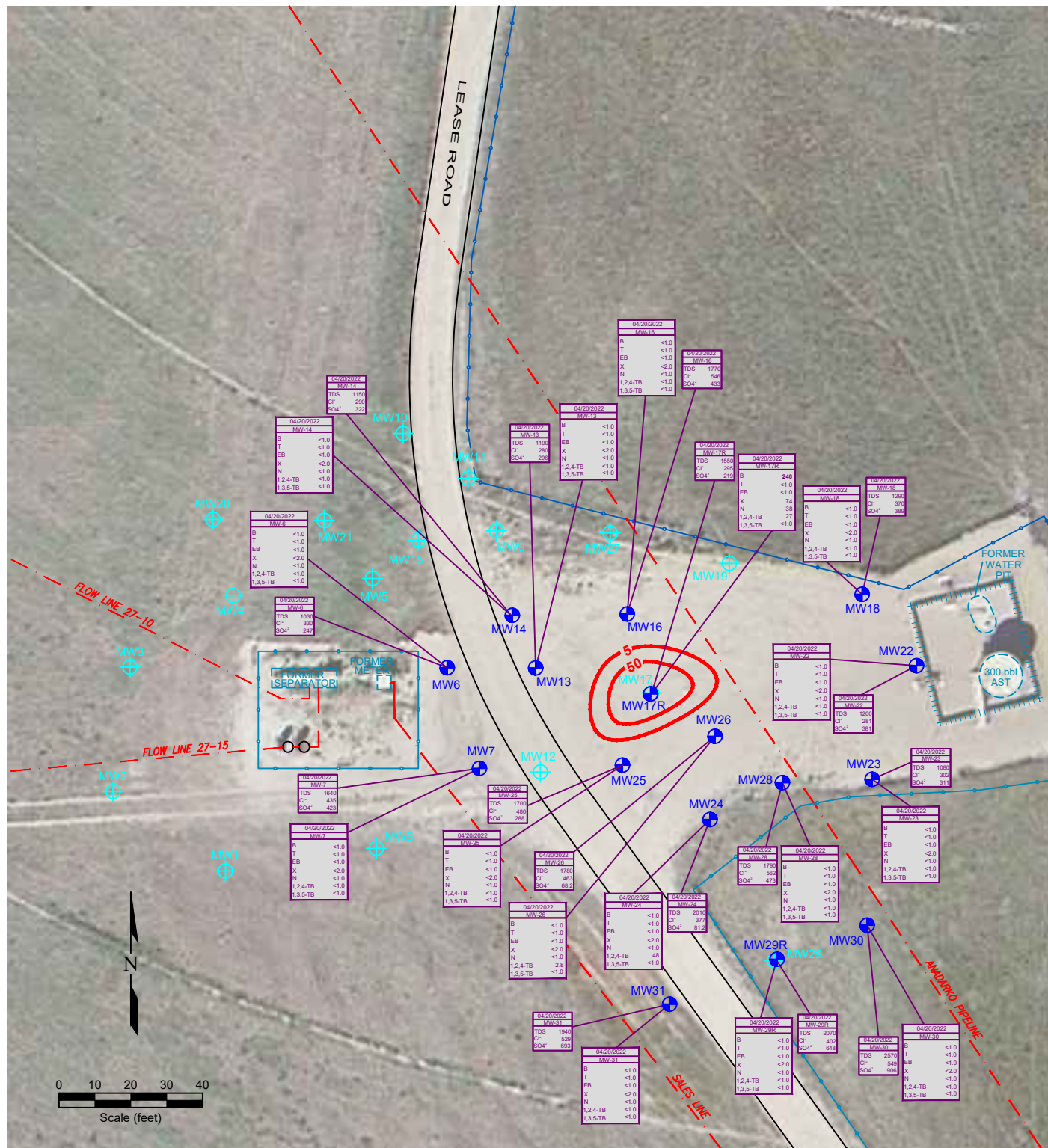
Noble Energy, Inc. ~ Libsack R G27-15

SWSE Sec. 27, T4N, R65W, 6th PM

Weld County, Colorado

40.278307°, -104.645216°

Project No. C013-009	Prepared by	Drawn by TA	
Date 5/10/22	Reviewed by EB	Filename 13009R	



LEGEND

- MONITORING WELL
- ⊕ DESTROYED MONITORING WELL
- ABOVE GROUND STORAGE TANK
- FORMER FORMER FACILITY
- FENCE LINE
- PIPELINE
- CONTAINMENT BERM

04/20/2022 MW-6	
B	<1.0
T	<1.0
EB	<1.0
X	<2.0
N	<1.0
1,2,4-TB	<1.0
1,3,5-TB	<1.0

DATE SAMPLED SAMPLE ID	
BENZENE (ug/L)	
TOLUENE (ug/L)	
ETHYLBENZENE (ug/L)	
TOTAL XYLENES (ug/L)	
NAPHTHALENE (ug/L)	
1,2,4-TRIMETHYLBENZENE (ug/L)	
1,3,5-TRIMETHYLBENZENE (ug/L)	

04/20/2022 MW-6	
TDS	1030
Cl ⁻	330
SO ₄ ²⁻	247

DATE SAMPLED SAMPLE ID	
TOTAL DISSOLVED SOLIDS (mg/L)	
CHLORIDE ION (mg/L)	
SULFATE ION (mg/L)	

50	
BENZENE	
ISOCONCENTRATION (ug/L)	

Figure 4
GROUNDWATER CHEMISTRY MAP
April 20, 2022
Noble Energy, Inc. ~ Libsack R G27-15
SWSE Sec. 27, T4N, R65W, 6th PM
Weld County, Colorado
40.278307°, -104.645216°

Project No.

C013-009

Date

5/10/22

Prepared by

EB

Reviewed by

EB

Drawn by

TA

Filename

13009R



Summit Scientific

4653 Table Mountain Drive, Golden, Colorado 80403

303.277.9310

May 03, 2022

Paul Henchan
Fremont Environmental
PO Box 1289
Wellington, CO 80549
RE: Noble - Libsack R G27-15
Work Order #2204347

Enclosed are the results of analyses for samples received by Summit Scientific on 04/22/22 15:00. If you have any questions concerning this report, please feel free to contact me.

Sincerely,

A handwritten signature in black ink, appearing to read 'P. Shrewsbury', with a stylized, cursive script.

Paul Shrewsbury
President



Fremont Environmental
PO Box 1289
Wellington CO, 80549

Project: Noble - Libsack R G27-15

Project Number: [none]
Project Manager: Paul Henchan

Reported:
05/03/22 10:40

ANALYTICAL REPORT FOR SAMPLES

Sample ID	Laboratory ID	Matrix	Date Sampled	Date Received
MW-6	2204347-01	Water	04/20/22 00:00	04/22/22 15:00
MW-7	2204347-02	Water	04/20/22 00:00	04/22/22 15:00
MW-13	2204347-03	Water	04/20/22 00:00	04/22/22 15:00
MW-14	2204347-04	Water	04/20/22 00:00	04/22/22 15:00
MW-16	2204347-05	Water	04/20/22 00:00	04/22/22 15:00
MW-17R	2204347-06	Water	04/20/22 00:00	04/22/22 15:00
MW-18	2204347-07	Water	04/20/22 00:00	04/22/22 15:00
MW-22	2204347-08	Water	04/20/22 00:00	04/22/22 15:00
MW-23	2204347-09	Water	04/20/22 00:00	04/22/22 15:00
MW-24	2204347-10	Water	04/20/22 00:00	04/22/22 15:00
MW-25	2204347-11	Water	04/20/22 00:00	04/22/22 15:00
MW-26	2204347-12	Water	04/20/22 00:00	04/22/22 15:00
MW-28	2204347-13	Water	04/20/22 00:00	04/22/22 15:00
MW-29R	2204347-14	Water	04/20/22 00:00	04/22/22 15:00
MW-30	2204347-15	Water	04/20/22 00:00	04/22/22 15:00
MW-31	2204347-16	Water	04/20/22 00:00	04/22/22 15:00

Summit Scientific

The results in this report apply to the samples analyzed in accordance with the chain of custody document. This analytical report must be reproduced in its entirety.

Summit Scientific

S₂

2204347.2

4653 Table Mountain Drive ♦ Golden, Colorado 80403
303-277-9310 ♦ 303-374-5933 (f)

Page 2 of 2

Client: Fremont Environmental

Project Manager: Paul Henehan

Address: P.O Box 1289

E-Mail: paulh@fremontenv.com, ethanb@fremontenv.com

City/State/Zip: Wellington, CO 80549

Bill to: Jacob

Phone: 303-956-8714

Project Name: Noble - Libsack RG 27-15

Sampler Name: EB

Project Number:

ID	Sample Description	Date Sampled	Time Sampled	# of containers	Preservative				Matrix				Analysis Requested										Notes:		
					HCl	HNO ₃	None	Other	Water	Soil	Air-Canister #	Other	GBTEXN-915	BTEX-910	GRO	DRO/ORO	SAR	EC	pH	Boron	PAH-915				
1	MW-25	4/20/22		4			X		X					X					X						
2	MW-26																								
3	MW-28																								
4	MW-29R																								
5	MW-30																								
6	MW-31																								
7																									
8																									
9																									
10																									

Relinquished by: <i>Ethan Black</i>	Date/Time: 4/22/22	Received by: <i>[Signature]</i>	Date/Time: 4/22/22 1500	Turn Around Time (Check) Same Day _____ 72 hours _____ 24 hours _____ Standard _____ 48 hours _____ Sample Integrity: Temperature Upon Receipt: 0.4 Samples Intact: Yes No
Relinquished by:	Date/Time:	Received by:	Date/Time:	
Relinquished by:	Date/Time:	Received by:	Date/Time:	

Summit Scientific

S₂

2204347.1

4653 Table Mountain Drive ♦ Golden, Colorado 80403
303-277-9310 ♦ 303-374-5933 (f)

Page 1 of 2

Client: Fremont Environmental

Project Manager: Paul Henehan

Address: P.O Box 1289

E-Mail: paulh@fremontenv.com, ethanb@fremontenv.com

City/State/Zip: Wellington, CO 80549

Bill to: Jacob

Phone: 303-956-8714

Project Name: Noble Liback RG 27-15

Sampler Name: EB

Project Number:

ID	Sample Description	Date Sampled	Time Sampled	# of containers	Preservative				Matrix				Analysis Requested								Notes:	
					HCl	HNO ₃	None	Other	Water	Soil	Air-Canister #	Other	GBTEXN-915	BTEX-910	GRO	DRO/ORO	SAR	Fe, TDS, Cl ⁻ , SO ₄ ²⁻	pH	Boron		PAH-915
1	MW-6	4/20/22		4			X		X					X				X				
2	MW-7																					
3	MW-13																					
4	MW-14																					
5	MW-16																					
6	MW-17R																					
7	MW-18																					
8	MW-22																					
9	MW-23																					
10	MW-24																					

Relinquished by:	Date/Time:	Received by:	Date/Time:	Turn Around Time (Check) Same Day _____ 72 hours _____ 24 hours <u>Standard</u> _____ 48 hours Sample Integrity: Temperature Upon Receipt: 74 _____ Samples Intact: <u>Yes</u> No
Relinquished by:	Date/Time:	Received by:	Date/Time:	
Relinquished by:	Date/Time:	Received by:	Date/Time:	

S₂

2/2
Sample Receipt Checklist

S2 Work Order# 2204347


Client: Fremont Client Project ID: Noble-Libsack RQ 27-15

Shipped Via: H.D./P.U./FedEx/UPS/USPS/Other _____ Airbill #: _____

	-		
--	---	--	--

Matrix (Check all that apply) Air ☐ Soil/Solid ☐ Water ☒ Other ☐Temp (°C) 04Thermometer # 1

	Yes	No	N/A	Comments (if any)
If samples require cooling, is the temperature < 6 °C ⁽¹⁾ ? NOTE: If samples are delivered the same day of sampling, this requirement is met if there is evidence that cooling has begun.	-			<u>on ICE</u>
Were all samples received intact ⁽¹⁾ ?	-			
Was adequate sample volume provided ⁽¹⁾ ?	-			
If custody seals are present, are they intact ⁽¹⁾ ?	-			
Are samples due within 48 hours present?		-		
Are water samples with short hold times present? Note the short hold analysis in the comments column - pH, Nitrate/Nitrite, Ferrous Iron (Fe ²⁺), Hexavalent Chromium (Cr ⁶⁺ , Cr VI), COD/BOD, Total Coliform, E. Coli, Total Residual Chlorine (TRC), Dissolved Oxygen			-	
Is a chain-of-custody (COC) form present and filled out completely ⁽¹⁾ ?	-			
Does the COC agree with the number and type of sample bottles received ⁽¹⁾ ?	-			
Do the sample IDs on the bottle labels match the COC ⁽¹⁾ ?	-			
Is the COC properly relinquished by the client w/ date and time recorded ⁽¹⁾ ?	-			
For volatiles in water – is there headspace present? If yes, contact client and note in narrative.		-		
Are samples preserved that require preservation (excluding cooling) ⁽¹⁾ ? Note the type of preservative in the comments column – HCl, H ₂ SO ₄ , NaOH, HNO ₃ , etc.			-	
If samples are acid preserved for metals, is the pH ≤ 2 ⁽¹⁾ ? Record the pH in Comments.			-	
If dissolved metals are requested, were samples field filtered?			-	
<u>Additional Comments (if any):</u> 				
<small>⁽¹⁾ If NO, then contact the client before proceeding with analysis and note in case narrative.</small>				



Custodian Printed Name

4.22.22

Date/Time



Fremont Environmental
PO Box 1289
Wellington CO, 80549

Project: Noble - Libsack R G27-15

Project Number: [none]
Project Manager: Paul Henehan

Reported:
05/03/22 10:40

MW-6
2204347-01 (Water)

Summit Scientific

Volatile Organic Compounds by EPA Method 8260B

Date Sampled: **04/20/22 00:00**

Analyte	Result	Reporting		Dilution	Batch	Prepared	Analyzed	Method	Notes
		Limit	Units						
Benzene	ND	1.0	ug/l	1	BFD0545	04/25/22	04/27/22	EPA 8260B	
Toluene	ND	1.0	"	"	"	"	"	"	
Ethylbenzene	ND	1.0	"	"	"	"	"	"	
Xylenes (total)	ND	2.0	"	"	"	"	"	"	
Naphthalene	ND	1.0	"	"	"	"	"	"	
1,2,4-Trimethylbenzene	ND	1.0	"	"	"	"	"	"	
1,3,5-Trimethylbenzene	ND	1.0	"	"	"	"	"	"	

Date Sampled: **04/20/22 00:00**

Analyte	Result	Reporting		Dilution	Batch	Prepared	Analyzed	Method	Notes
		Limit	Units						
Surrogate: 1,2-Dichloroethane-d4		64.0 %	23-173		"	"	"	"	
Surrogate: Toluene-d8		95.6 %	20-170		"	"	"	"	
Surrogate: 4-Bromofluorobenzene		89.2 %	21-167		"	"	"	"	

Anions by EPA Method 300.0

Date Sampled: **04/20/22 00:00**

Analyte	Result	Reporting		Dilution	Batch	Prepared	Analyzed	Method	Notes
		Limit	Units						
Chloride	330	12.0	mg/L	200	BFE0019	05/02/22	05/02/22	EPA 300.0	
Sulfate	247	60.0	"	"	"	"	"	"	

Total Dissolved Solids by SM2540C

Date Sampled: **04/20/22 00:00**

Analyte	Result	Reporting		Dilution	Batch	Prepared	Analyzed	Method	Notes
		Limit	Units						
Total Dissolved Solids	1030	10.0	mg/L	1	BFD0546	04/25/22	04/27/22	SM2540C	

Summit Scientific

The results in this report apply to the samples analyzed in accordance with the chain of custody document. This analytical report must be reproduced in its entirety.



Fremont Environmental
PO Box 1289
Wellington CO, 80549

Project: Noble - Libsack R G27-15

Project Number: [none]
Project Manager: Paul Henchan

Reported:
05/03/22 10:40

MW-7
2204347-02 (Water)

Summit Scientific

Volatile Organic Compounds by EPA Method 8260B

Date Sampled: **04/20/22 00:00**

Analyte	Result	Reporting	Units	Dilution	Batch	Prepared	Analyzed	Method	Notes
		Limit							
Benzene	ND	1.0	ug/l	1	BFD0545	04/25/22	04/27/22	EPA 8260B	
Toluene	ND	1.0	"	"	"	"	"	"	
Ethylbenzene	ND	1.0	"	"	"	"	"	"	
Xylenes (total)	ND	2.0	"	"	"	"	"	"	
Naphthalene	ND	1.0	"	"	"	"	"	"	
1,2,4-Trimethylbenzene	ND	1.0	"	"	"	"	"	"	
1,3,5-Trimethylbenzene	ND	1.0	"	"	"	"	"	"	

Date Sampled: **04/20/22 00:00**

Analyte	Result	Reporting	Units	Dilution	Batch	Prepared	Analyzed	Method	Notes
		Limit							
Surrogate: 1,2-Dichloroethane-d4		62.8 %	23-173		"	"	"	"	
Surrogate: Toluene-d8		95.3 %	20-170		"	"	"	"	
Surrogate: 4-Bromofluorobenzene		89.3 %	21-167		"	"	"	"	

Anions by EPA Method 300.0

Date Sampled: **04/20/22 00:00**

Analyte	Result	Reporting	Units	Dilution	Batch	Prepared	Analyzed	Method	Notes
		Limit							
Chloride	435	12.0	mg/L	200	BFE0019	05/02/22	05/02/22	EPA 300.0	
Sulfate	423	60.0	"	"	"	"	"	"	

Total Dissolved Solids by SM2540C

Date Sampled: **04/20/22 00:00**

Analyte	Result	Reporting	Units	Dilution	Batch	Prepared	Analyzed	Method	Notes
		Limit							
Total Dissolved Solids	1640	10.0	mg/L	1	BFD0546	04/25/22	04/27/22	SM2540C	

Summit Scientific

The results in this report apply to the samples analyzed in accordance with the chain of custody document. This analytical report must be reproduced in its entirety.



Fremont Environmental
PO Box 1289
Wellington CO, 80549

Project: Noble - Libsack R G27-15

Project Number: [none]
Project Manager: Paul Henchan

Reported:
05/03/22 10:40

MW-13
2204347-03 (Water)

Summit Scientific

Volatile Organic Compounds by EPA Method 8260B

Date Sampled: **04/20/22 00:00**

Analyte	Result	Reporting	Units	Dilution	Batch	Prepared	Analyzed	Method	Notes
		Limit							
Benzene	ND	1.0	ug/l	1	BFD0545	04/25/22	04/27/22	EPA 8260B	
Toluene	ND	1.0	"	"	"	"	"	"	
Ethylbenzene	ND	1.0	"	"	"	"	"	"	
Xylenes (total)	ND	2.0	"	"	"	"	"	"	
Naphthalene	ND	1.0	"	"	"	"	"	"	
1,2,4-Trimethylbenzene	ND	1.0	"	"	"	"	"	"	
1,3,5-Trimethylbenzene	ND	1.0	"	"	"	"	"	"	

Date Sampled: **04/20/22 00:00**

Analyte	Result	Reporting	Units	Dilution	Batch	Prepared	Analyzed	Method	Notes
		Limit							
Surrogate: 1,2-Dichloroethane-d4		63.2 %	23-173		"	"	"	"	
Surrogate: Toluene-d8		97.1 %	20-170		"	"	"	"	
Surrogate: 4-Bromofluorobenzene		105 %	21-167		"	"	"	"	

Anions by EPA Method 300.0

Date Sampled: **04/20/22 00:00**

Analyte	Result	Reporting	Units	Dilution	Batch	Prepared	Analyzed	Method	Notes
		Limit							
Chloride	280	12.0	mg/L	200	BFE0019	05/02/22	05/02/22	EPA 300.0	
Sulfate	296	60.0	"	"	"	"	"	"	

Total Dissolved Solids by SM2540C

Date Sampled: **04/20/22 00:00**

Analyte	Result	Reporting	Units	Dilution	Batch	Prepared	Analyzed	Method	Notes
		Limit							
Total Dissolved Solids	1190	10.0	mg/L	1	BFD0546	04/25/22	04/27/22	SM2540C	

Summit Scientific

The results in this report apply to the samples analyzed in accordance with the chain of custody document. This analytical report must be reproduced in its entirety.



Fremont Environmental
PO Box 1289
Wellington CO, 80549

Project: Noble - Libsack R G27-15

Project Number: [none]
Project Manager: Paul Henchan

Reported:
05/03/22 10:40

MW-14
2204347-04 (Water)

Summit Scientific

Volatile Organic Compounds by EPA Method 8260B

Date Sampled: **04/20/22 00:00**

Analyte	Result	Reporting	Units	Dilution	Batch	Prepared	Analyzed	Method	Notes
		Limit							
Benzene	ND	1.0	ug/l	1	BFD0545	04/25/22	04/27/22	EPA 8260B	
Toluene	ND	1.0	"	"	"	"	"	"	
Ethylbenzene	ND	1.0	"	"	"	"	"	"	
Xylenes (total)	ND	2.0	"	"	"	"	"	"	
Naphthalene	ND	1.0	"	"	"	"	"	"	
1,2,4-Trimethylbenzene	ND	1.0	"	"	"	"	"	"	
1,3,5-Trimethylbenzene	ND	1.0	"	"	"	"	"	"	

Date Sampled: **04/20/22 00:00**

Analyte	Result	Reporting	Units	Dilution	Batch	Prepared	Analyzed	Method	Notes
		Limit							
Surrogate: 1,2-Dichloroethane-d4		65.9 %	23-173		"	"	"	"	
Surrogate: Toluene-d8		95.6 %	20-170		"	"	"	"	
Surrogate: 4-Bromofluorobenzene		91.4 %	21-167		"	"	"	"	

Anions by EPA Method 300.0

Date Sampled: **04/20/22 00:00**

Analyte	Result	Reporting	Units	Dilution	Batch	Prepared	Analyzed	Method	Notes
		Limit							
Chloride	290	12.0	mg/L	200	BFE0019	05/02/22	05/02/22	EPA 300.0	
Sulfate	322	60.0	"	"	"	"	"	"	

Total Dissolved Solids by SM2540C

Date Sampled: **04/20/22 00:00**

Analyte	Result	Reporting	Units	Dilution	Batch	Prepared	Analyzed	Method	Notes
		Limit							
Total Dissolved Solids	1150	10.0	mg/L	1	BFD0546	04/25/22	04/27/22	SM2540C	

Summit Scientific

The results in this report apply to the samples analyzed in accordance with the chain of custody document. This analytical report must be reproduced in its entirety.



Fremont Environmental
PO Box 1289
Wellington CO, 80549

Project: Noble - Libsack R G27-15

Project Number: [none]
Project Manager: Paul Henehan

Reported:
05/03/22 10:40

MW-16
2204347-05 (Water)

Summit Scientific

Volatile Organic Compounds by EPA Method 8260B

Date Sampled: **04/20/22 00:00**

Analyte	Result	Reporting	Units	Dilution	Batch	Prepared	Analyzed	Method	Notes
		Limit							
Benzene	ND	1.0	ug/l	1	BFD0545	04/25/22	04/27/22	EPA 8260B	
Toluene	ND	1.0	"	"	"	"	"	"	
Ethylbenzene	ND	1.0	"	"	"	"	"	"	
Xylenes (total)	ND	2.0	"	"	"	"	"	"	
Naphthalene	ND	1.0	"	"	"	"	"	"	
1,2,4-Trimethylbenzene	ND	1.0	"	"	"	"	"	"	
1,3,5-Trimethylbenzene	ND	1.0	"	"	"	"	"	"	

Date Sampled: **04/20/22 00:00**

Analyte	Result	Reporting	Units	Dilution	Batch	Prepared	Analyzed	Method	Notes
		Limit							
Surrogate: 1,2-Dichloroethane-d4		67.3 %	23-173		"	"	"	"	
Surrogate: Toluene-d8		97.6 %	20-170		"	"	"	"	
Surrogate: 4-Bromofluorobenzene		93.1 %	21-167		"	"	"	"	

Anions by EPA Method 300.0

Date Sampled: **04/20/22 00:00**

Analyte	Result	Reporting	Units	Dilution	Batch	Prepared	Analyzed	Method	Notes
		Limit							
Chloride	546	12.0	mg/L	200	BFE0019	05/02/22	05/02/22	EPA 300.0	
Sulfate	433	60.0	"	"	"	"	"	"	

Total Dissolved Solids by SM2540C

Date Sampled: **04/20/22 00:00**

Analyte	Result	Reporting	Units	Dilution	Batch	Prepared	Analyzed	Method	Notes
		Limit							
Total Dissolved Solids	1770	10.0	mg/L	1	BFD0546	04/25/22	04/27/22	SM2540C	

Summit Scientific

The results in this report apply to the samples analyzed in accordance with the chain of custody document. This analytical report must be reproduced in its entirety.



Fremont Environmental
PO Box 1289
Wellington CO, 80549

Project: Noble - Libsack R G27-15

Project Number: [none]
Project Manager: Paul Henchan

Reported:
05/03/22 10:40

MW-17R
2204347-06 (Water)

Summit Scientific

Volatile Organic Compounds by EPA Method 8260B

Date Sampled: **04/20/22 00:00**

Analyte	Result	Reporting	Units	Dilution	Batch	Prepared	Analyzed	Method	Notes
		Limit							
Benzene	240	10	ug/l	10	BFD0545	04/25/22	04/27/22	EPA 8260B	
Toluene	ND	1.0	"	1	"	"	"	"	
Ethylbenzene	ND	1.0	"	"	"	"	"	"	
Xylenes (total)	74	2.0	"	"	"	"	"	"	
Naphthalene	ND	1.0	"	"	"	"	"	"	
1,2,4-Trimethylbenzene	38	10	"	10	"	"	"	"	
1,3,5-Trimethylbenzene	27	10	"	"	"	"	"	"	

Date Sampled: **04/20/22 00:00**

Analyte	Result	Reporting	Units	Dilution	Batch	Prepared	Analyzed	Method	Notes
		Limit							
Surrogate: 1,2-Dichloroethane-d4		72.6 %	23-173		"	"	"	"	
Surrogate: Toluene-d8		97.3 %	20-170		"	"	"	"	
Surrogate: 4-Bromofluorobenzene		111 %	21-167		"	"	"	"	

Anions by EPA Method 300.0

Date Sampled: **04/20/22 00:00**

Analyte	Result	Reporting	Units	Dilution	Batch	Prepared	Analyzed	Method	Notes
		Limit							
Chloride	295	12.0	mg/L	200	BFE0019	05/02/22	05/02/22	EPA 300.0	
Sulfate	219	60.0	"	"	"	"	"	"	

Total Dissolved Solids by SM2540C

Date Sampled: **04/20/22 00:00**

Analyte	Result	Reporting	Units	Dilution	Batch	Prepared	Analyzed	Method	Notes
		Limit							
Total Dissolved Solids	1550	10.0	mg/L	1	BFD0546	04/25/22	04/27/22	SM2540C	

Summit Scientific

The results in this report apply to the samples analyzed in accordance with the chain of custody document. This analytical report must be reproduced in its entirety.



Fremont Environmental
PO Box 1289
Wellington CO, 80549

Project: Noble - Libsack R G27-15

Project Number: [none]
Project Manager: Paul Henchan

Reported:
05/03/22 10:40

MW-18
2204347-07 (Water)

Summit Scientific

Volatile Organic Compounds by EPA Method 8260B

Date Sampled: **04/20/22 00:00**

Analyte	Result	Reporting	Units	Dilution	Batch	Prepared	Analyzed	Method	Notes
		Limit							
Benzene	ND	1.0	ug/l	1	BFD0545	04/25/22	04/29/22	EPA 8260B	
Toluene	ND	1.0	"	"	"	"	"	"	
Ethylbenzene	ND	1.0	"	"	"	"	"	"	
Xylenes (total)	ND	2.0	"	"	"	"	"	"	
Naphthalene	ND	1.0	"	"	"	"	"	"	
1,2,4-Trimethylbenzene	ND	1.0	"	"	"	"	"	"	
1,3,5-Trimethylbenzene	ND	1.0	"	"	"	"	"	"	

Date Sampled: **04/20/22 00:00**

Analyte	Result	Reporting	Units	Dilution	Batch	Prepared	Analyzed	Method	Notes
		Limit							
Surrogate: 1,2-Dichloroethane-d4		64.6 %	23-173		"	"	"	"	
Surrogate: Toluene-d8		95.0 %	20-170		"	"	"	"	
Surrogate: 4-Bromofluorobenzene		89.9 %	21-167		"	"	"	"	

Anions by EPA Method 300.0

Date Sampled: **04/20/22 00:00**

Analyte	Result	Reporting	Units	Dilution	Batch	Prepared	Analyzed	Method	Notes
		Limit							
Chloride	370	12.0	mg/L	200	BFE0019	05/02/22	05/02/22	EPA 300.0	
Sulfate	389	60.0	"	"	"	"	"	"	

Total Dissolved Solids by SM2540C

Date Sampled: **04/20/22 00:00**

Analyte	Result	Reporting	Units	Dilution	Batch	Prepared	Analyzed	Method	Notes
		Limit							
Total Dissolved Solids	1290	10.0	mg/L	1	BFD0546	04/25/22	04/27/22	SM2540C	

Summit Scientific

The results in this report apply to the samples analyzed in accordance with the chain of custody document. This analytical report must be reproduced in its entirety.



Fremont Environmental
PO Box 1289
Wellington CO, 80549

Project: Noble - Libsack R G27-15

Project Number: [none]
Project Manager: Paul Henchan

Reported:
05/03/22 10:40

MW-22
2204347-08 (Water)

Summit Scientific

Volatile Organic Compounds by EPA Method 8260B

Date Sampled: **04/20/22 00:00**

Analyte	Result	Reporting	Units	Dilution	Batch	Prepared	Analyzed	Method	Notes
		Limit							
Benzene	ND	1.0	ug/l	1	BFD0545	04/25/22	04/29/22	EPA 8260B	
Toluene	ND	1.0	"	"	"	"	"	"	
Ethylbenzene	ND	1.0	"	"	"	"	"	"	
Xylenes (total)	ND	2.0	"	"	"	"	"	"	
Naphthalene	ND	1.0	"	"	"	"	"	"	
1,2,4-Trimethylbenzene	ND	1.0	"	"	"	"	"	"	
1,3,5-Trimethylbenzene	ND	1.0	"	"	"	"	"	"	

Date Sampled: **04/20/22 00:00**

Analyte	Result	Reporting	Units	Dilution	Batch	Prepared	Analyzed	Method	Notes
		Limit							
Surrogate: 1,2-Dichloroethane-d4		64.1 %	23-173		"	"	"	"	
Surrogate: Toluene-d8		96.9 %	20-170		"	"	"	"	
Surrogate: 4-Bromofluorobenzene		91.7 %	21-167		"	"	"	"	

Anions by EPA Method 300.0

Date Sampled: **04/20/22 00:00**

Analyte	Result	Reporting	Units	Dilution	Batch	Prepared	Analyzed	Method	Notes
		Limit							
Chloride	281	12.0	mg/L	200	BFE0019	05/02/22	05/02/22	EPA 300.0	
Sulfate	381	60.0	"	"	"	"	"	"	

Total Dissolved Solids by SM2540C

Date Sampled: **04/20/22 00:00**

Analyte	Result	Reporting	Units	Dilution	Batch	Prepared	Analyzed	Method	Notes
		Limit							
Total Dissolved Solids	1200	10.0	mg/L	1	BFD0546	04/25/22	04/27/22	SM2540C	

Summit Scientific

The results in this report apply to the samples analyzed in accordance with the chain of custody document. This analytical report must be reproduced in its entirety.



Fremont Environmental
PO Box 1289
Wellington CO, 80549

Project: Noble - Libsack R G27-15

Project Number: [none]
Project Manager: Paul Henchan

Reported:
05/03/22 10:40

MW-23
2204347-09 (Water)

Summit Scientific

Volatile Organic Compounds by EPA Method 8260B

Date Sampled: **04/20/22 00:00**

Analyte	Result	Reporting		Units	Dilution	Batch	Prepared	Analyzed	Method	Notes
		Limit								
Benzene	ND	1.0		ug/l	1	BFD0545	04/25/22	04/29/22	EPA 8260B	
Toluene	ND	1.0		"	"	"	"	"	"	
Ethylbenzene	ND	1.0		"	"	"	"	"	"	
Xylenes (total)	ND	2.0		"	"	"	"	"	"	
Naphthalene	ND	1.0		"	"	"	"	"	"	
1,2,4-Trimethylbenzene	ND	1.0		"	"	"	"	"	"	
1,3,5-Trimethylbenzene	ND	1.0		"	"	"	"	"	"	

Date Sampled: **04/20/22 00:00**

Analyte	Result	Reporting		Units	Dilution	Batch	Prepared	Analyzed	Method	Notes
		Limit								
Surrogate: 1,2-Dichloroethane-d4		63.8 %		23-173		"	"	"	"	
Surrogate: Toluene-d8		95.3 %		20-170		"	"	"	"	
Surrogate: 4-Bromofluorobenzene		90.0 %		21-167		"	"	"	"	

Anions by EPA Method 300.0

Date Sampled: **04/20/22 00:00**

Analyte	Result	Reporting		Units	Dilution	Batch	Prepared	Analyzed	Method	Notes
		Limit								
Chloride	302	12.0		mg/L	200	BFE0019	05/02/22	05/02/22	EPA 300.0	
Sulfate	311	60.0		"	"	"	"	"	"	

Total Dissolved Solids by SM2540C

Date Sampled: **04/20/22 00:00**

Analyte	Result	Reporting		Units	Dilution	Batch	Prepared	Analyzed	Method	Notes
		Limit								
Total Dissolved Solids	1080	10.0		mg/L	1	BFD0546	04/25/22	04/27/22	SM2540C	

Summit Scientific

The results in this report apply to the samples analyzed in accordance with the chain of custody document. This analytical report must be reproduced in its entirety.



Fremont Environmental
PO Box 1289
Wellington CO, 80549

Project: Noble - Libsack R G27-15

Project Number: [none]
Project Manager: Paul Henchan

Reported:
05/03/22 10:40

MW-24
2204347-10 (Water)

Summit Scientific

Volatile Organic Compounds by EPA Method 8260B

Date Sampled: **04/20/22 00:00**

Analyte	Result	Reporting	Units	Dilution	Batch	Prepared	Analyzed	Method	Notes
		Limit							
Benzene	ND	1.0	ug/l	1	BFD0545	04/25/22	04/29/22	EPA 8260B	
Toluene	ND	1.0	"	"	"	"	"	"	
Ethylbenzene	ND	1.0	"	"	"	"	"	"	
Xylenes (total)	ND	2.0	"	"	"	"	"	"	
Naphthalene	ND	1.0	"	"	"	"	"	"	
1,2,4-Trimethylbenzene	48	1.0	"	"	"	"	"	"	
1,3,5-Trimethylbenzene	ND	1.0	"	"	"	"	"	"	

Date Sampled: **04/20/22 00:00**

Analyte	Result	Reporting	Units	Dilution	Batch	Prepared	Analyzed	Method	Notes
		Limit							
Surrogate: 1,2-Dichloroethane-d4		65.7 %	23-173		"	"	"	"	
Surrogate: Toluene-d8		89.0 %	20-170		"	"	"	"	
Surrogate: 4-Bromofluorobenzene		149 %	21-167		"	"	"	"	

Anions by EPA Method 300.0

Date Sampled: **04/20/22 00:00**

Analyte	Result	Reporting	Units	Dilution	Batch	Prepared	Analyzed	Method	Notes
		Limit							
Chloride	377	12.0	mg/L	200	BFE0019	05/02/22	05/02/22	EPA 300.0	
Sulfate	81.2	60.0	"	"	"	"	"	"	

Total Dissolved Solids by SM2540C

Date Sampled: **04/20/22 00:00**

Analyte	Result	Reporting	Units	Dilution	Batch	Prepared	Analyzed	Method	Notes
		Limit							
Total Dissolved Solids	2010	10.0	mg/L	1	BFD0546	04/25/22	04/27/22	SM2540C	

Summit Scientific

The results in this report apply to the samples analyzed in accordance with the chain of custody document. This analytical report must be reproduced in its entirety.



Fremont Environmental
PO Box 1289
Wellington CO, 80549

Project: Noble - Libsack R G27-15

Project Number: [none]
Project Manager: Paul Henchan

Reported:
05/03/22 10:40

MW-25
2204347-11 (Water)

Summit Scientific

Volatile Organic Compounds by EPA Method 8260B

Date Sampled: **04/20/22 00:00**

Analyte	Result	Reporting	Units	Dilution	Batch	Prepared	Analyzed	Method	Notes
		Limit							
Benzene	ND	1.0	ug/l	1	BFD0545	04/25/22	04/29/22	EPA 8260B	
Toluene	ND	1.0	"	"	"	"	"	"	
Ethylbenzene	ND	1.0	"	"	"	"	"	"	
Xylenes (total)	ND	2.0	"	"	"	"	"	"	
Naphthalene	ND	1.0	"	"	"	"	"	"	
1,2,4-Trimethylbenzene	ND	1.0	"	"	"	"	"	"	
1,3,5-Trimethylbenzene	ND	1.0	"	"	"	"	"	"	

Date Sampled: **04/20/22 00:00**

Analyte	Result	Reporting	Units	Dilution	Batch	Prepared	Analyzed	Method	Notes
		Limit							
Surrogate: 1,2-Dichloroethane-d4		64.3 %	23-173		"	"	"	"	
Surrogate: Toluene-d8		95.0 %	20-170		"	"	"	"	
Surrogate: 4-Bromofluorobenzene		91.2 %	21-167		"	"	"	"	

Anions by EPA Method 300.0

Date Sampled: **04/20/22 00:00**

Analyte	Result	Reporting	Units	Dilution	Batch	Prepared	Analyzed	Method	Notes
		Limit							
Chloride	480	12.0	mg/L	200	BFE0019	05/02/22	05/02/22	EPA 300.0	
Sulfate	288	60.0	"	"	"	"	"	"	

Total Dissolved Solids by SM2540C

Date Sampled: **04/20/22 00:00**

Analyte	Result	Reporting	Units	Dilution	Batch	Prepared	Analyzed	Method	Notes
		Limit							
Total Dissolved Solids	1700	10.0	mg/L	1	BFD0546	04/25/22	04/27/22	SM2540C	

Summit Scientific

The results in this report apply to the samples analyzed in accordance with the chain of custody document. This analytical report must be reproduced in its entirety.



Fremont Environmental
PO Box 1289
Wellington CO, 80549

Project: Noble - Libsack R G27-15

Project Number: [none]
Project Manager: Paul Henchan

Reported:
05/03/22 10:40

MW-26
2204347-12 (Water)

Summit Scientific

Volatile Organic Compounds by EPA Method 8260B

Date Sampled: **04/20/22 00:00**

Analyte	Result	Reporting	Units	Dilution	Batch	Prepared	Analyzed	Method	Notes
		Limit							
Benzene	ND	1.0	ug/l	1	BFD0545	04/25/22	04/29/22	EPA 8260B	
Toluene	ND	1.0	"	"	"	"	"	"	
Ethylbenzene	ND	1.0	"	"	"	"	"	"	
Xylenes (total)	ND	2.0	"	"	"	"	"	"	
Naphthalene	ND	1.0	"	"	"	"	"	"	
1,2,4-Trimethylbenzene	2.8	1.0	"	"	"	"	"	"	
1,3,5-Trimethylbenzene	ND	1.0	"	"	"	"	"	"	

Date Sampled: **04/20/22 00:00**

Analyte	Result	Reporting	Units	Dilution	Batch	Prepared	Analyzed	Method	Notes
		Limit							
Surrogate: 1,2-Dichloroethane-d4		64.9 %	23-173		"	"	"	"	
Surrogate: Toluene-d8		99.7 %	20-170		"	"	"	"	
Surrogate: 4-Bromofluorobenzene		97.5 %	21-167		"	"	"	"	

Anions by EPA Method 300.0

Date Sampled: **04/20/22 00:00**

Analyte	Result	Reporting	Units	Dilution	Batch	Prepared	Analyzed	Method	Notes
		Limit							
Chloride	463	12.0	mg/L	200	BFE0019	05/02/22	05/02/22	EPA 300.0	
Sulfate	68.2	60.0	"	"	"	"	"	"	

Total Dissolved Solids by SM2540C

Date Sampled: **04/20/22 00:00**

Analyte	Result	Reporting	Units	Dilution	Batch	Prepared	Analyzed	Method	Notes
		Limit							
Total Dissolved Solids	1780	10.0	mg/L	1	BFD0546	04/25/22	04/27/22	SM2540C	

Summit Scientific

The results in this report apply to the samples analyzed in accordance with the chain of custody document. This analytical report must be reproduced in its entirety.



Fremont Environmental
PO Box 1289
Wellington CO, 80549

Project: Noble - Libsack R G27-15

Project Number: [none]
Project Manager: Paul Henchan

Reported:
05/03/22 10:40

MW-28
2204347-13 (Water)

Summit Scientific

Volatile Organic Compounds by EPA Method 8260B

Date Sampled: **04/20/22 00:00**

Analyte	Result	Reporting	Units	Dilution	Batch	Prepared	Analyzed	Method	Notes
		Limit							
Benzene	ND	1.0	ug/l	1	BFD0545	04/25/22	04/29/22	EPA 8260B	
Toluene	ND	1.0	"	"	"	"	"	"	
Ethylbenzene	ND	1.0	"	"	"	"	"	"	
Xylenes (total)	ND	2.0	"	"	"	"	"	"	
Naphthalene	ND	1.0	"	"	"	"	"	"	
1,2,4-Trimethylbenzene	ND	1.0	"	"	"	"	"	"	
1,3,5-Trimethylbenzene	ND	1.0	"	"	"	"	"	"	

Date Sampled: **04/20/22 00:00**

Analyte	Result	Reporting	Units	Dilution	Batch	Prepared	Analyzed	Method	Notes
		Limit							
Surrogate: 1,2-Dichloroethane-d4		63.9 %	23-173		"	"	"	"	
Surrogate: Toluene-d8		94.8 %	20-170		"	"	"	"	
Surrogate: 4-Bromofluorobenzene		91.6 %	21-167		"	"	"	"	

Anions by EPA Method 300.0

Date Sampled: **04/20/22 00:00**

Analyte	Result	Reporting	Units	Dilution	Batch	Prepared	Analyzed	Method	Notes
		Limit							
Chloride	562	12.0	mg/L	200	BFE0019	05/02/22	05/02/22	EPA 300.0	
Sulfate	473	60.0	"	"	"	"	"	"	

Total Dissolved Solids by SM2540C

Date Sampled: **04/20/22 00:00**

Analyte	Result	Reporting	Units	Dilution	Batch	Prepared	Analyzed	Method	Notes
		Limit							
Total Dissolved Solids	1790	10.0	mg/L	1	BFD0546	04/25/22	04/27/22	SM2540C	

Summit Scientific

The results in this report apply to the samples analyzed in accordance with the chain of custody document. This analytical report must be reproduced in its entirety.



Fremont Environmental
PO Box 1289
Wellington CO, 80549

Project: Noble - Libsack R G27-15

Project Number: [none]
Project Manager: Paul Henchan

Reported:
05/03/22 10:40

MW-29R
2204347-14 (Water)

Summit Scientific

Volatile Organic Compounds by EPA Method 8260B

Date Sampled: **04/20/22 00:00**

Analyte	Result	Reporting		Units	Dilution	Batch	Prepared	Analyzed	Method	Notes
		Limit								
Benzene	ND	1.0		ug/l	1	BFD0545	04/25/22	04/29/22	EPA 8260B	
Toluene	ND	1.0		"	"	"	"	"	"	
Ethylbenzene	ND	1.0		"	"	"	"	"	"	
Xylenes (total)	ND	2.0		"	"	"	"	"	"	
Naphthalene	ND	1.0		"	"	"	"	"	"	
1,2,4-Trimethylbenzene	ND	1.0		"	"	"	"	"	"	
1,3,5-Trimethylbenzene	ND	1.0		"	"	"	"	"	"	

Date Sampled: **04/20/22 00:00**

Analyte	Result	Reporting		Units	Dilution	Batch	Prepared	Analyzed	Method	Notes
		Limit								
Surrogate: 1,2-Dichloroethane-d4		66.0 %		23-173		"	"	"	"	
Surrogate: Toluene-d8		95.9 %		20-170		"	"	"	"	
Surrogate: 4-Bromofluorobenzene		88.4 %		21-167		"	"	"	"	

Anions by EPA Method 300.0

Date Sampled: **04/20/22 00:00**

Analyte	Result	Reporting		Units	Dilution	Batch	Prepared	Analyzed	Method	Notes
		Limit								
Chloride	402	12.0		mg/L	200	BFE0019	05/02/22	05/02/22	EPA 300.0	
Sulfate	648	60.0		"	"	"	"	"	"	

Total Dissolved Solids by SM2540C

Date Sampled: **04/20/22 00:00**

Analyte	Result	Reporting		Units	Dilution	Batch	Prepared	Analyzed	Method	Notes
		Limit								
Total Dissolved Solids	2070	10.0		mg/L	1	BFD0546	04/25/22	04/27/22	SM2540C	

Summit Scientific

The results in this report apply to the samples analyzed in accordance with the chain of custody document. This analytical report must be reproduced in its entirety.



Fremont Environmental
PO Box 1289
Wellington CO, 80549

Project: Noble - Libsack R G27-15

Project Number: [none]
Project Manager: Paul Henchan

Reported:
05/03/22 10:40

MW-30
2204347-15 (Water)

Summit Scientific

Volatile Organic Compounds by EPA Method 8260B

Date Sampled: **04/20/22 00:00**

Analyte	Result	Reporting	Units	Dilution	Batch	Prepared	Analyzed	Method	Notes
		Limit							
Benzene	ND	1.0	ug/l	1	BFD0545	04/25/22	04/29/22	EPA 8260B	
Toluene	ND	1.0	"	"	"	"	"	"	
Ethylbenzene	ND	1.0	"	"	"	"	"	"	
Xylenes (total)	ND	2.0	"	"	"	"	"	"	
Naphthalene	ND	1.0	"	"	"	"	"	"	
1,2,4-Trimethylbenzene	ND	1.0	"	"	"	"	"	"	
1,3,5-Trimethylbenzene	ND	1.0	"	"	"	"	"	"	

Date Sampled: **04/20/22 00:00**

Analyte	Result	Reporting	Units	Dilution	Batch	Prepared	Analyzed	Method	Notes
		Limit							
Surrogate: 1,2-Dichloroethane-d4		65.8 %	23-173		"	"	"	"	
Surrogate: Toluene-d8		95.3 %	20-170		"	"	"	"	
Surrogate: 4-Bromofluorobenzene		90.2 %	21-167		"	"	"	"	

Anions by EPA Method 300.0

Date Sampled: **04/20/22 00:00**

Analyte	Result	Reporting	Units	Dilution	Batch	Prepared	Analyzed	Method	Notes
		Limit							
Chloride	549	12.0	mg/L	200	BFE0019	05/02/22	05/02/22	EPA 300.0	
Sulfate	906	60.0	"	"	"	"	"	"	

Total Dissolved Solids by SM2540C

Date Sampled: **04/20/22 00:00**

Analyte	Result	Reporting	Units	Dilution	Batch	Prepared	Analyzed	Method	Notes
		Limit							
Total Dissolved Solids	2570	10.0	mg/L	1	BFD0546	04/25/22	04/27/22	SM2540C	

Summit Scientific

The results in this report apply to the samples analyzed in accordance with the chain of custody document. This analytical report must be reproduced in its entirety.



Fremont Environmental
PO Box 1289
Wellington CO, 80549

Project: Noble - Libsack R G27-15

Project Number: [none]
Project Manager: Paul Henchan

Reported:
05/03/22 10:40

MW-31
2204347-16 (Water)

Summit Scientific

Volatile Organic Compounds by EPA Method 8260B

Date Sampled: **04/20/22 00:00**

Analyte	Result	Reporting	Units	Dilution	Batch	Prepared	Analyzed	Method	Notes
		Limit							
Benzene	ND	1.0	ug/l	1	BFD0545	04/25/22	04/29/22	EPA 8260B	
Toluene	ND	1.0	"	"	"	"	"	"	
Ethylbenzene	ND	1.0	"	"	"	"	"	"	
Xylenes (total)	ND	2.0	"	"	"	"	"	"	
Naphthalene	ND	1.0	"	"	"	"	"	"	
1,2,4-Trimethylbenzene	ND	1.0	"	"	"	"	"	"	
1,3,5-Trimethylbenzene	ND	1.0	"	"	"	"	"	"	

Date Sampled: **04/20/22 00:00**

Analyte	Result	Reporting	Units	Dilution	Batch	Prepared	Analyzed	Method	Notes
		Limit							
Surrogate: 1,2-Dichloroethane-d4		63.5 %	23-173		"	"	"	"	
Surrogate: Toluene-d8		96.5 %	20-170		"	"	"	"	
Surrogate: 4-Bromofluorobenzene		90.5 %	21-167		"	"	"	"	

Anions by EPA Method 300.0

Date Sampled: **04/20/22 00:00**

Analyte	Result	Reporting	Units	Dilution	Batch	Prepared	Analyzed	Method	Notes
		Limit							
Chloride	529	12.0	mg/L	200	BFE0019	05/02/22	05/02/22	EPA 300.0	
Sulfate	693	60.0	"	"	"	"	"	"	

Total Dissolved Solids by SM2540C

Date Sampled: **04/20/22 00:00**

Analyte	Result	Reporting	Units	Dilution	Batch	Prepared	Analyzed	Method	Notes
		Limit							
Total Dissolved Solids	1940	10.0	mg/L	1	BFD0546	04/25/22	04/27/22	SM2540C	

Summit Scientific

The results in this report apply to the samples analyzed in accordance with the chain of custody document. This analytical report must be reproduced in its entirety.



Fremont Environmental
PO Box 1289
Wellington CO, 80549

Project: Noble - Libsack R G27-15

Project Number: [none]
Project Manager: Paul Henchan

Reported:
05/03/22 10:40

Volatile Organic Compounds by EPA Method 8260B - Quality Control

Summit Scientific

Analyte	Reporting			Spike	Source		%REC		RPD	
	Result	Limit	Units	Level	Result	%REC	Limits	RPD	Limit	Notes

Batch BFD0545 - EPA 5030 Water MS

Blank (BFD0545-BLK1)

Prepared: 04/25/22 Analyzed: 04/27/22

Benzene	ND	1.0	ug/l							
Toluene	ND	1.0	"							
Ethylbenzene	ND	1.0	"							
Xylenes (total)	ND	2.0	"							
Naphthalene	ND	1.0	"							
1,2,4-Trimethylbenzene	ND	1.0	"							
1,3,5-Trimethylbenzene	ND	1.0	"							
Surrogate: 1,2-Dichloroethane-d4	10.5		"	13.3		78.5	23-173			
Surrogate: Toluene-d8	12.6		"	13.3		94.8	20-170			
Surrogate: 4-Bromofluorobenzene	12.6		"	13.3		94.8	21-167			

LCS (BFD0545-BS1)

Prepared: 04/25/22 Analyzed: 04/27/22

Benzene	22.3	1.0	ug/l	25.0		89.2	51-132			
Toluene	22.6	1.0	"	25.0		90.4	51-138			
Ethylbenzene	23.1	1.0	"	25.0		92.4	58-146			
m,p-Xylene	56.0	2.0	"	50.0		112	57-144			
o-Xylene	23.6	1.0	"	25.0		94.5	53-146			
Naphthalene	25.7	1.0	"	25.0		103	70-130			
1,2,4-Trimethylbenzene	21.9	1.0	"	25.0		87.6	70-130			
1,3,5-Trimethylbenzene	21.9	1.0	"	25.0		87.6	70-130			
Surrogate: 1,2-Dichloroethane-d4	10.5		"	13.3		78.8	23-173			
Surrogate: Toluene-d8	12.7		"	13.3		95.4	20-170			
Surrogate: 4-Bromofluorobenzene	12.6		"	13.3		94.7	21-167			

Matrix Spike (BFD0545-MS1)

Source: 2204347-01

Prepared: 04/25/22 Analyzed: 04/27/22

Benzene	22.3	1.0	ug/l	25.0	ND	89.2	34-141			
Toluene	22.8	1.0	"	25.0	ND	91.2	27-151			
Ethylbenzene	24.3	1.0	"	25.0	ND	97.0	29-160			
m,p-Xylene	58.8	2.0	"	50.0	ND	118	20-166			
o-Xylene	25.1	1.0	"	25.0	ND	101	33-159			
Naphthalene	23.3	1.0	"	25.0	ND	93.3	70-130			
1,2,4-Trimethylbenzene	23.7	1.0	"	25.0	ND	94.6	70-130			
1,3,5-Trimethylbenzene	23.6	1.0	"	25.0	ND	94.6	70-130			
Surrogate: 1,2-Dichloroethane-d4	8.80		"	13.3		66.0	23-173			
Surrogate: Toluene-d8	12.7		"	13.3		95.3	20-170			
Surrogate: 4-Bromofluorobenzene	12.4		"	13.3		92.7	21-167			

Summit Scientific

The results in this report apply to the samples analyzed in accordance with the chain of custody document. This analytical report must be reproduced in its entirety.



Fremont Environmental
PO Box 1289
Wellington CO, 80549

Project: Noble - Libsack R G27-15

Project Number: [none]
Project Manager: Paul Henchan

Reported:
05/03/22 10:40

Volatile Organic Compounds by EPA Method 8260B - Quality Control

Summit Scientific

Analyte	Reporting			Spike	Source		%REC		RPD	
	Result	Limit	Units	Level	Result	%REC	Limits	RPD	Limit	Notes

Batch BFD0545 - EPA 5030 Water MS

Matrix Spike Dup (BFD0545-MSD1)		Source: 2204347-01			Prepared: 04/25/22 Analyzed: 04/27/22					
Benzene	22.7	1.0	ug/l	25.0	ND	90.9	34-141	1.82	30	
Toluene	23.3	1.0	"	25.0	ND	93.3	27-151	2.30	30	
Ethylbenzene	23.8	1.0	"	25.0	ND	95.4	29-160	1.75	30	
m,p-Xylene	58.3	2.0	"	50.0	ND	117	20-166	0.820	30	
o-Xylene	25.2	1.0	"	25.0	ND	101	33-159	0.119	30	
Naphthalene	27.6	1.0	"	25.0	ND	110	70-130	16.8	30	
1,2,4-Trimethylbenzene	23.7	1.0	"	25.0	ND	94.7	70-130	0.0845	30	
1,3,5-Trimethylbenzene	23.6	1.0	"	25.0	ND	94.4	70-130	0.127	30	
Surrogate: 1,2-Dichloroethane-d4	10.6		"	13.3		79.4	23-173			
Surrogate: Toluene-d8	12.8		"	13.3		95.6	20-170			
Surrogate: 4-Bromofluorobenzene	12.8		"	13.3		95.7	21-167			

Summit Scientific

The results in this report apply to the samples analyzed in accordance with the chain of custody document. This analytical report must be reproduced in its entirety.



Fremont Environmental
PO Box 1289
Wellington CO, 80549

Project: Noble - Libsack R G27-15

Project Number: [none]
Project Manager: Paul Henchan

Reported:
05/03/22 10:40

Anions by EPA Method 300.0 - Quality Control

Summit Scientific

Analyte	Reporting			Spike	Source		%REC		RPD	
	Result	Limit	Units	Level	Result	%REC	Limits	RPD	Limit	Notes

Batch BFE0019 - General Preparation

Blank (BFE0019-BLK1)

Prepared & Analyzed: 05/02/22

Chloride	ND	0.0600	mg/L
Sulfate	ND	0.300	"

LCS (BFE0019-BS1)

Prepared & Analyzed: 05/02/22

Chloride	3.25	0.0600	mg/L	3.00	108	90-110
Sulfate	14.1	0.300	"	15.0	94.2	90-110

Duplicate (BFE0019-DUP1)

Source: 2204347-01

Prepared & Analyzed: 05/02/22

Chloride	320	12.0	mg/L	330	3.26	20
Sulfate	282	60.0	"	247	13.1	20

Matrix Spike (BFE0019-MS1)

Source: 2204347-01

Prepared & Analyzed: 05/02/22

Chloride	934	12.0	mg/L	600	330	101	80-120
Sulfate	3060	60.0	"	3000	247	93.7	80-120

Summit Scientific

The results in this report apply to the samples analyzed in accordance with the chain of custody document. This analytical report must be reproduced in its entirety.



Fremont Environmental
PO Box 1289
Wellington CO, 80549

Project: Noble - Libsack R G27-15

Project Number: [none]
Project Manager: Paul Henchan

Reported:
05/03/22 10:40

Total Dissolved Solids by SM2540C - Quality Control
Summit Scientific

Analyte	Result	Reporting		Spike Level	Source Result	%REC		RPD		Notes
		Limit	Units			%REC	Limits	RPD	Limit	

Batch BFD0546 - General Preparation

Blank (BFD0546-BLK1)

Prepared: 04/25/22 Analyzed: 04/27/22

Total Dissolved Solids ND 10.0 mg/L

Duplicate (BFD0546-DUP1)

Source: 2204347-01

Prepared: 04/25/22 Analyzed: 04/27/22

Total Dissolved Solids 1070 10.0 mg/L 1030 4.38 20

Summit Scientific

The results in this report apply to the samples analyzed in accordance with the chain of custody document. This analytical report must be reproduced in its entirety.



Fremont Environmental
PO Box 1289
Wellington CO, 80549

Project: Noble - Libsack R G27-15

Project Number: [none]
Project Manager: Paul Henchan

Reported:
05/03/22 10:40

Notes and Definitions

DET	Analyte DETECTED
ND	Analyte NOT DETECTED at or above the reporting limit
NR	Not Reported
dry	Sample results reported on a dry weight basis
RPD	Relative Percent Difference