



**RADIAL BOND LOG
WITH GAMMA RAY**

Comp. ANADARKO PETROLEUM CORP
Well WARNER 11-18
Field WATTTENBERG
Co. WELD
State CO

Company **ANADARKO PETROLEUM CORP**
Well **WARNER 11-18**
Field **WATTTENBERG**
County **WELD** State **CO**

Location: API #: 05-123-21995
NE/SW
LAT - 40.1372077
LONG - -104.7095427
SEC 18 TWP 2N RGE 65W
Permanent Datum GROUND LEVEL Elevation 5002'
Log Measured From KB 14 Above Perm. Datum
Drilling Measured From KELLY BUSHING
Other Services
CCL
TEMP
Elevation
K.B. 5014
D.F. NA
G.L. 5002

Date of Service	3-15-2022			
Run Number	ONE			
Depth Driller or P8TD	8052'			
Depth Logger	1148'			
Bottom Log Interval	1134'			
Top Log Interval	SURFACE			
Open Hole Size	7-7/8"			
Type Fluid	WATER			
Fluid Level	SURFACE			
Fluid Density	8.3			
Max. Recorded Temperature	NA			
Max. Wellhead Pressure	ZERO PSI			
Wellhead Connection	7 1/16 5K			
Estimated Cement Top	NOT RECORDED			
Unit Number	P-132			
Wireline Size	9/32"			
Location	FORT MORGAN			
Recorded By	G. JACKSON			
Witnessed By	N. WINDHOLZ			
Tubing Record	Size	WFt	Top	Bottom
Surface Casing	8.625"	24#	SURFACE	944'
Production Casing	4.5	11.6#	SURFACE	8026'
Liner Record				

<<< Fold Here >>>

All interpretations are opinions based on inferences from electrical or other measurements and Pioneer Wireline Services, LLC cannot and does not guarantee the accuracy or correctness of any interpretation, and Pioneer Wireline Services, LLC will not be liable or responsible for any loss, costs, damages, or expenses incurred or sustained by anyone resulting from any interpretation made by any of our officers, agents or employees.

Comments

N/A DENOTES NOT AVAILABLE OR NON-APPLICABLE.
CORRELATED TO KELLY BUSHING
LOG RAN WITH ZERO PSI
CASING PUNCHERS SHOT @ 900' ON 3-14-2022

THANK YOU FOR USING PIONEER ENERGY SERVICES!

Your Pioneer Energy Services Crew	Tool Data - Services	Serial Number
Engineer: G. JACKSON Operator: W. BRIGANTE Operator: J. CHAVEZ Operator:	RCBL GR/CCL	070641 110916

Log Variables

DatabaseC:\ProgramData\Warrior\Data\anadarko_warner 11-18_2022-03-15_rcbl.db
 Dataset field/well/run1/pass7/_vars_

Top - Bottom

BHTEMP_Src TEMP	BOREID in 7.875	BOTTEMP degF 100	CASEOD in 4.5	CASETHCK in 0	CASEWGHT lb/ft 11.6	MAXAMPL mV 81.2
MINAMPL mV 1	MINATTN db/ft 0.08	PERFS No	PPT usec 0	SRFTEMP degF 0	TDEPTH ft 0	

Variable Description

BHTEMP_Src : BHTEMP Input Source Selector
 BOREID : Borehole I.D.
 BOTTEMP : Bottom Hole Temperature
 CASEOD : Casing O.D.
 CASETHCK : Casing Thickness
 CASEWGHT : Casing Weight
 MAXAMPL : Maximum Amplitude

MINAMPL : Minimum Amplitude
 MINATTN : Minimum Attenuation
 PERFS : Perforation Flag
 PPT : Predicted Pipe Time
 SRFTEMP : Surface Temperature
 TDEPTH : Total Depth

Sensor	Offset (ft)	Schematic	Description	Length (ft)	O.D. (in)	Weight (lb)	
			Cable Head-Titan_144 1 7/16" Titan Cable Head	1.03	1.44	2.00	
			Centralizer-275 Probe 2 3/4" Probe Adjustable Spring Centralizer	2.88	2.75	15.00	
TEMP	17.11						
WVFS8	14.82			PROBE-RBT-DIGITAL-RBL-DCT (070230) Probe 2 3/4" Radii Bond with Temp-Corrosion Package	9.25	2.75	105.00
WVFS7	14.82						
WVFS6	14.82						
WVFS5	14.82						
WVFS4	14.82						
WVFS3	14.82						
WVFS2	14.82						
WVFS1	14.82						
WVFCAL	14.82						
WV3FT	14.82						
WV5FT	13.82						
HEADVOLT	10.63						
			Centralizer-275 Probe 2 3/4" Probe Adjustable Spring Centralizer	2.88	2.75	15.00	

CCL	6.84					
GR	5.54		PROBE-GR/CCL-DIGITAL-275 Probe GR-CCL (Probe-275-GR-CCL) Probe 2 3/4" Gamma Ray / CCL DIGITAL	4.54	2.75	60.00
			Centralizer-275 Probe 2 3/4" Probe Adjustable Spring Centralizer	2.88	2.75	15.00
			Bullnose-PROBE Probe Go Pin Pressure Cap	0.33	1.38	1.00
Dataset: anadarko_warner 11-18_2022-03-15_rcbl.db: field/well/run1/pass7 Total length: 23.79 ft Total weight: 213.00 lb O.D.: 2.75 in						

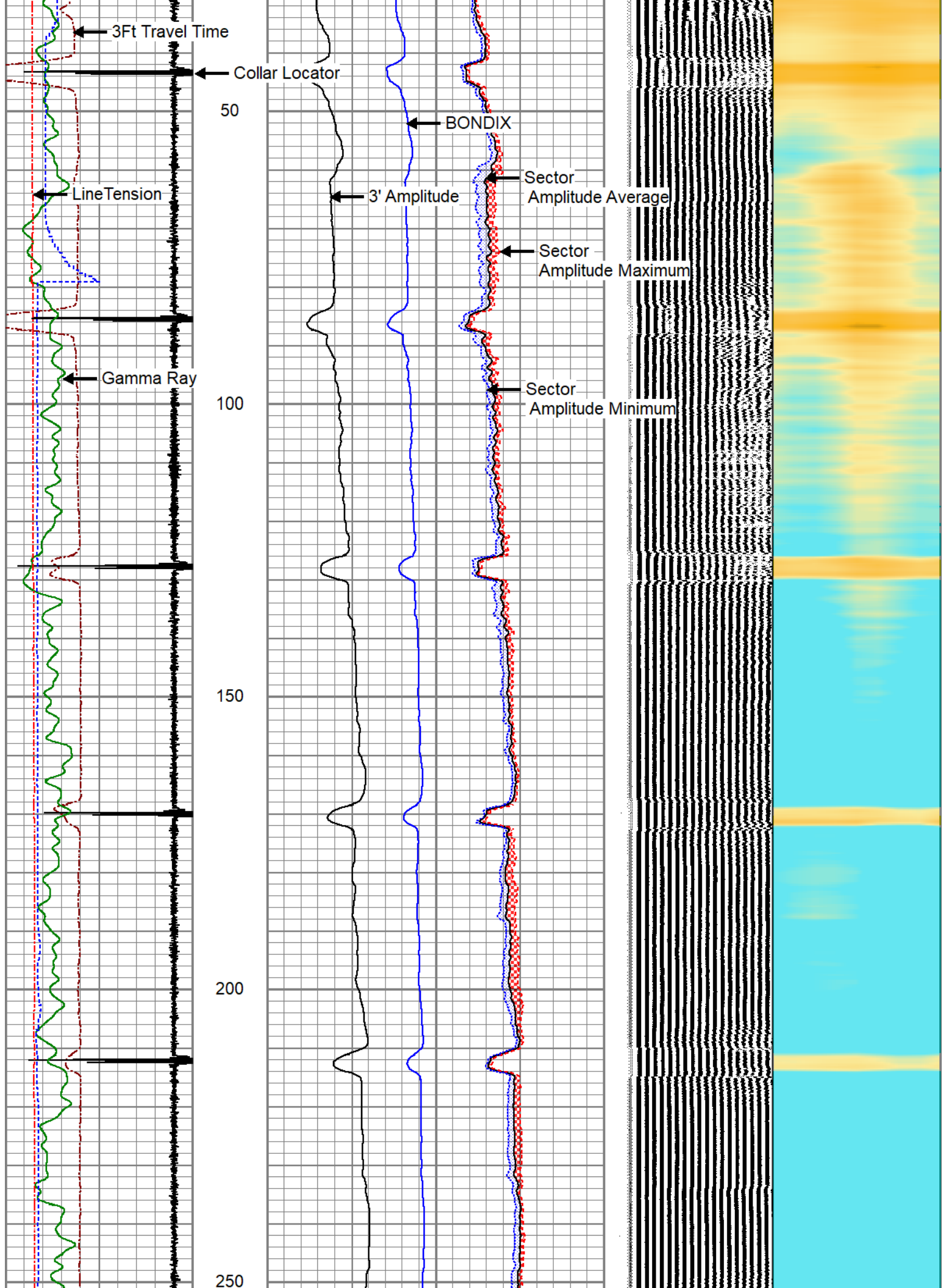
MAIN LOG

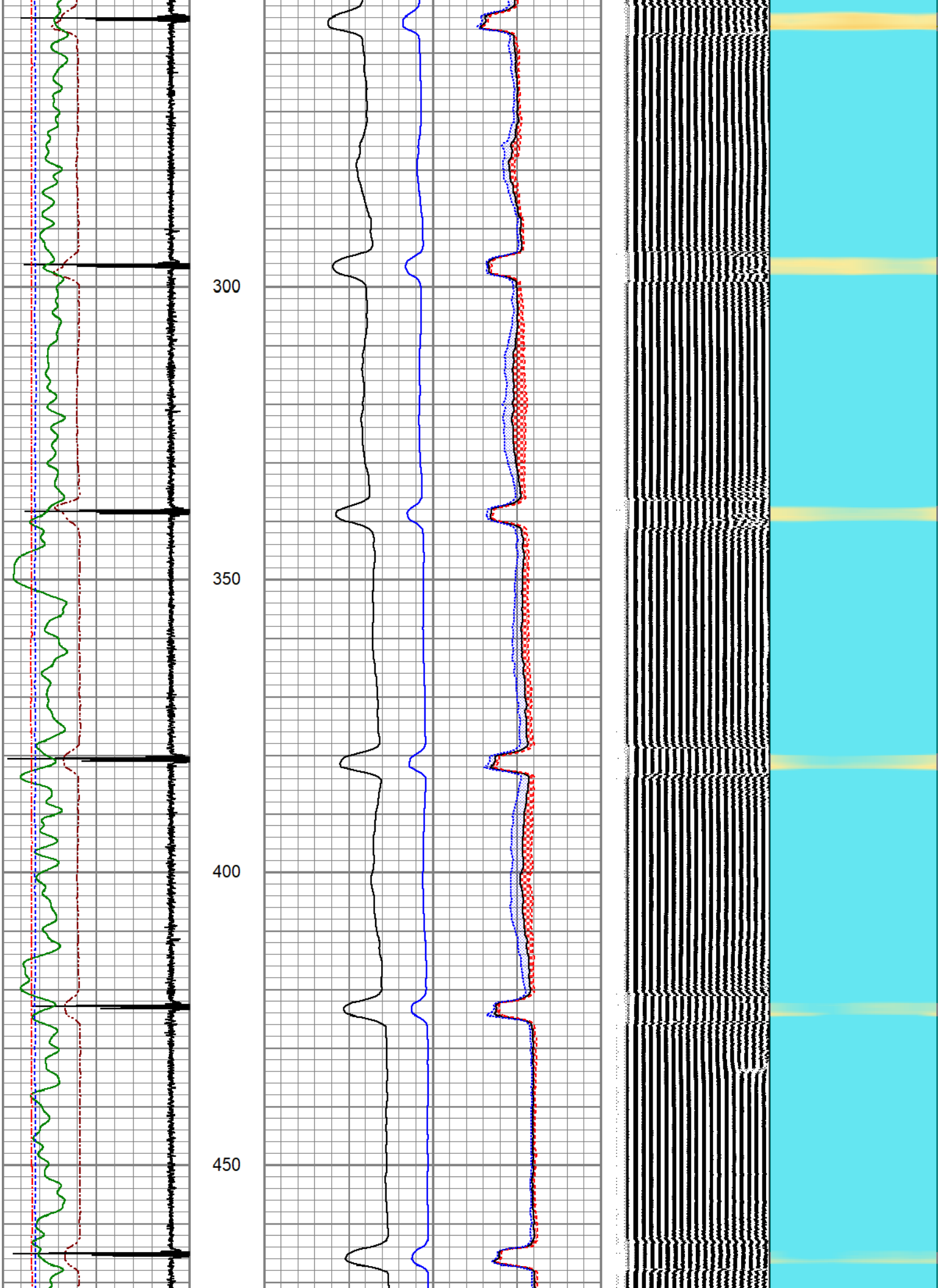
ZERO PSI APPLIED AT SURFACE

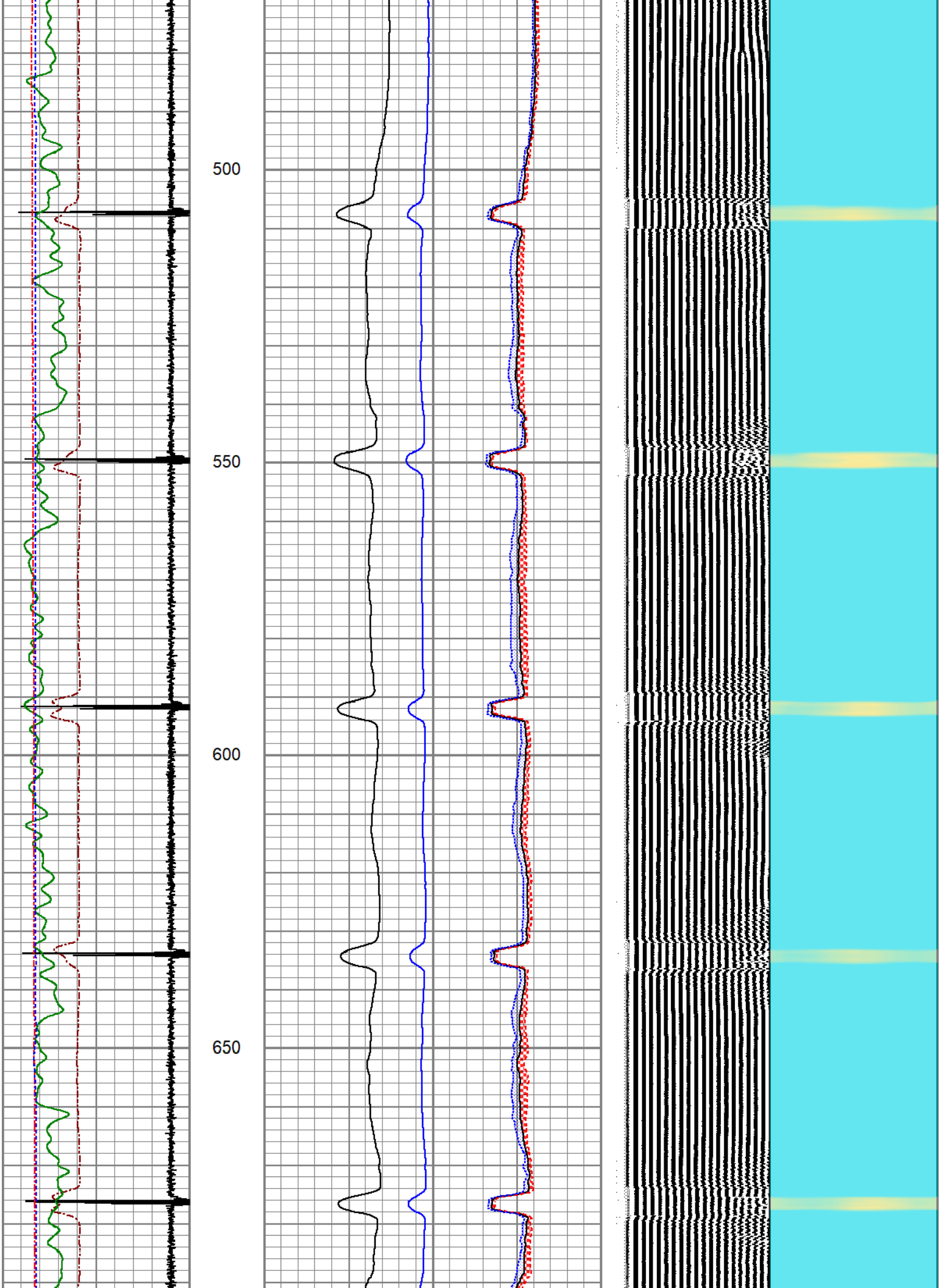
Database File	anadarko_warner 11-18_2022-03-15_rcbl.db
Dataset Pathname	pass7
Presentation Format	pinr_scbl
Dataset Creation	Tue Mar 15 08:37:17 2022
Charted by	Depth in Feet scaled 1:240

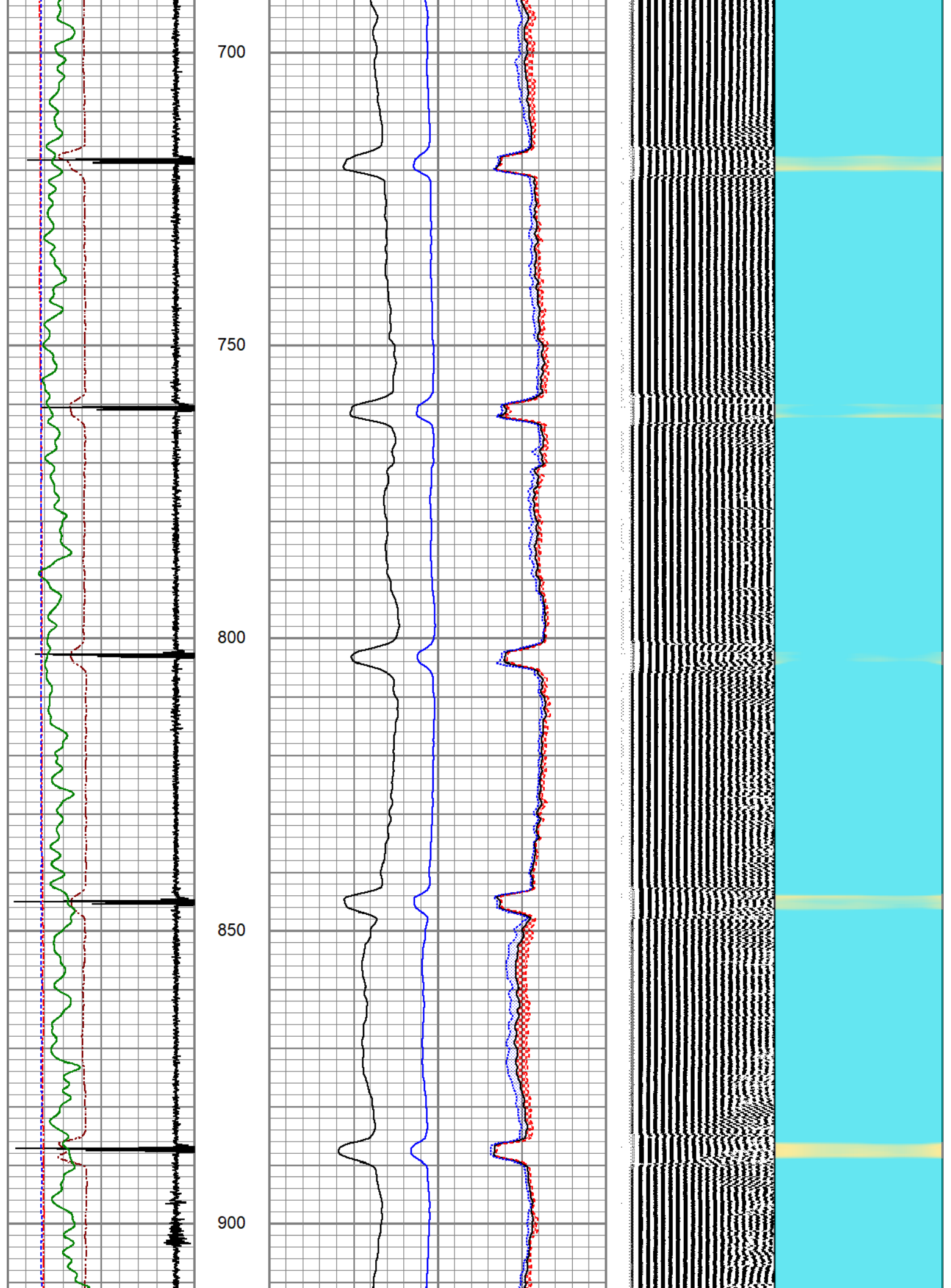
3Ft Travel Time	3' Amplitude	Sector	VDL	1 Sector Map 8
275 (usec) 175	0 (mV) 100	Amplitude Average	200 (usec) 1200	
-9 Collar Locator 1	3' Amplified Amplitude X 5	0 150		
Gamma Ray	0 (mV) 20	Sector Amplitude Maximum		
0 (GAPI) 150	1 BONDIX 0	0 150		
LineTension		Sector Amplitude Minimum		
0 (lb) 2000		0 150		
Line Speed				
-100 (ft/min) 100				

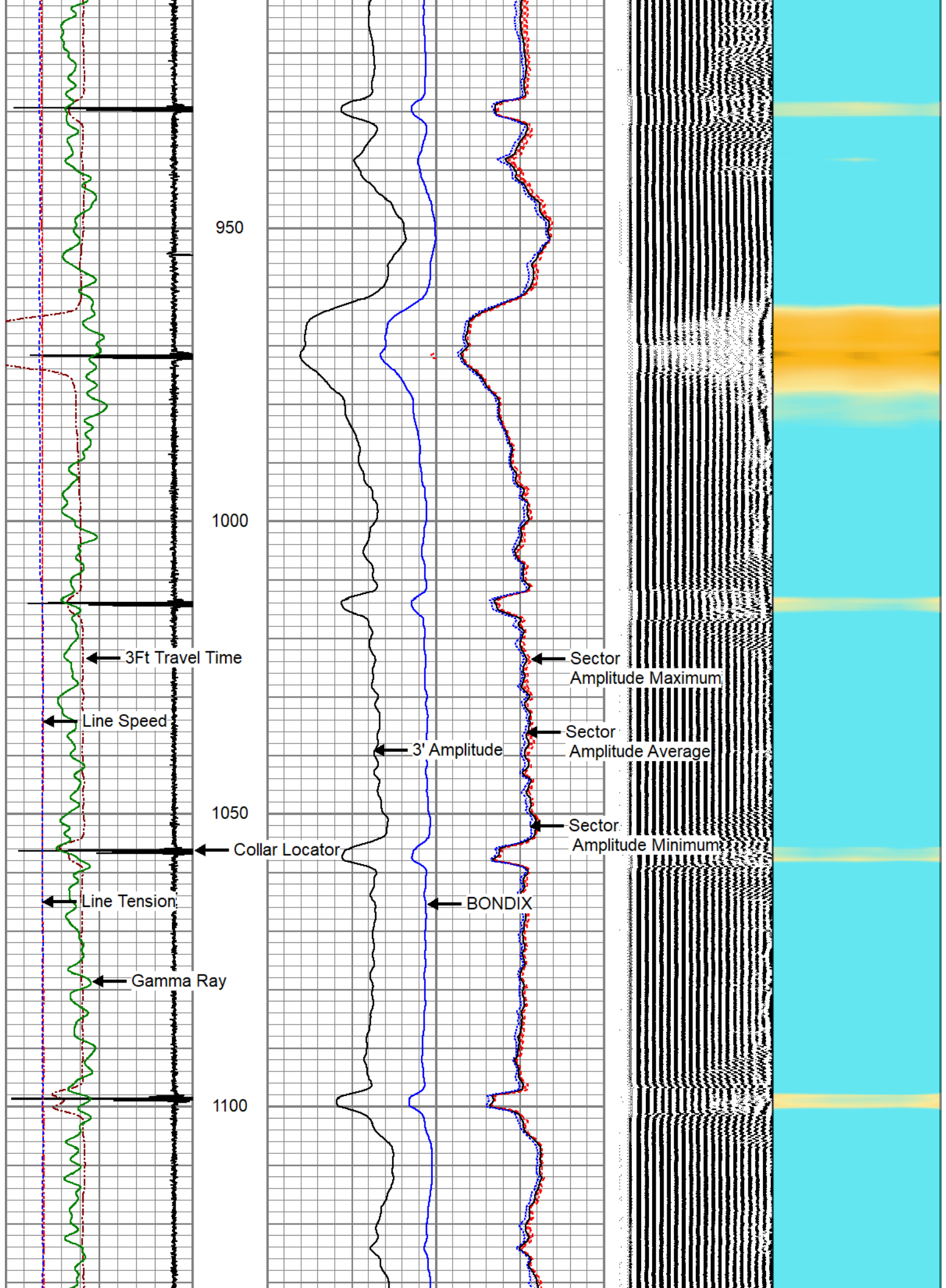


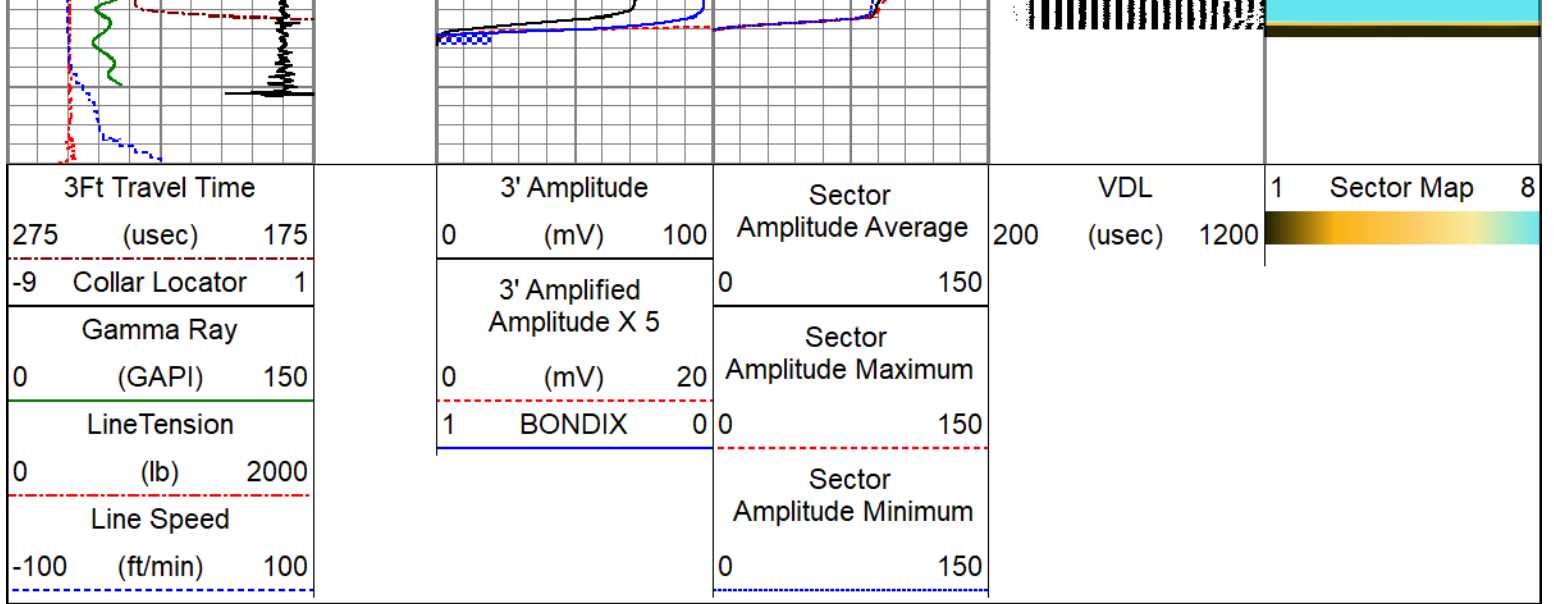












Calibration Report

Database File anadarko_warner 11-18_2022-03-15_rcbl.db
 Dataset Pathname pass7
 Dataset Creation Tue Mar 15 08:37:17 2022

Gamma Ray Calibration Report

Serial Number: Probe-275-GR-CCL
 Tool Model: 275 Probe GR-CCL
 Performed: Tue Mar 15 07:41:00 2022

Calibrator Value: 1.0 GAPI

Background Reading: 0.0 cps
 Calibrator Reading: 1.0 cps

Sensitivity: 1.0000 GAPI/cps

Segmented Cement Bond Log Calibration Report

Serial Number: 070230
 Tool Model: RBL-DCT

Calibration Casing Diameter: 4.500 in
 Calibration Depth: 955.002 ft

Master Calibration, performed Tue Mar 15 08:33:36 2022:

	Raw (v)		Calibrated (mv)		Results	
	Zero	Cal	Zero	Cal	Gain	Offset
3'	0.015	1.037	0.800	81.196	78.661	-0.371
CAL	1.466	1.513				
5'	0.015	0.903	0.800	81.196	90.590	-0.593
SUM						
S1	0.044	0.995	0.000	100.000	105.190	-4.675
S2	0.017	0.960	0.000	100.000	106.066	-1.787
S3	0.020	0.988	0.000	100.000	103.356	-2.093
S4	0.021	1.044	0.000	100.000	97.718	-2.051
S5	0.040	1.095	0.000	100.000	94.746	-3.758
S6	0.046	1.165	0.000	100.000	89.371	-4.119
S7	0.027	1.189	0.000	100.000	86.036	-2.319
S8	0.009	1.075	0.000	100.000	93.790	-0.804

Air Zero Calibration, performed Tue Mar 15 07:48:05 2022:

	Raw (v)	Calibrated (v)	Results
	Zero	Zero	Offset
3'	0.000	0.000	0.000
5'	0.000	0.000	0.000
SUM			
S1	0.000	0.000	0.000
S2	0.000	0.000	0.000
S3	0.000	0.000	0.000
S4	0.000	0.000	0.000
S5	0.000	0.000	0.000
S6	0.000	0.000	0.000
S7	0.000	0.000	0.000
S8	0.000	0.000	0.000

Temperature Calibration Report

Serial Number: 070230
Tool Model: RBL-DCT
Performed: (Not Performed)

	Reference	Reading
Low Reference:	0.00 degF	0.00 degF
High Reference:	1.00 degF	1.00 degF

Gain: 1.00
Offset: 0.00
Delta Spacing 1



ClearWell
DYNAMICS

Company	ANADARKO PETROLEUM CORP
Well	WARNER 11-18
Field	WATTENBERG
County	WELD
State	CO