



GAMMA RAY CCL
CEMENT BOND
SECTOR VDL

Company CIVITAS

Well DUTCH LAKE 9-11H

Field WATTENBERG

County WELD

State COLORADO

Location: API #: 05-123-33450

SEC 11 TWP 6N RGE 62W

Permanent Datum G.L. Elevation 4719

Log Measured From KB

Drilling Measured From KB

Date MARCH 21, 2022

Run Number ONE

Depth Diller 9829

Depth Logger 650

Bottom Logged Interval SURFACE

Top Log Interval 8-3/4

Open Hole Size WATER

Type Fluid N/A

Density / Viscosity N/A

Max. Recorded Temp. Estimated Cement Top

Time Well Ready	12:30	Time Well Ready	
Time Logger on Bottom	8:02	Time Logger on Bottom	
Location	KERSEY CO	Location	
Recorded By	GREG NOIAN	Recorded By	
Witnessed By	JIM ADAMS	Witnessed By	
Run Number	1	Run Number	
Bit		Bit	
From		From	
To		To	
Size		Size	
Weight		Weight	
Tubing Record		Tubing Record	
From		From	
To		To	
Size		Size	
Wgt/Ft		Wgt/Ft	
Top		Top	
Bottom		Bottom	

<<< Fold Here >>>

All interpretations are opinions based on inferences from electrical or other measurements and we cannot and do not guarantee the accuracy or correctness of any interpretation, and we shall not, except in the case of gross or willful negligence on our part, be liable or responsible for any loss, costs, damages, or expenses incurred or sustained by anyone resulting from any interpretation made by any of our officers, agents or employees. These interpretations are also subject to our general terms and conditions set out in our current Price Schedule.

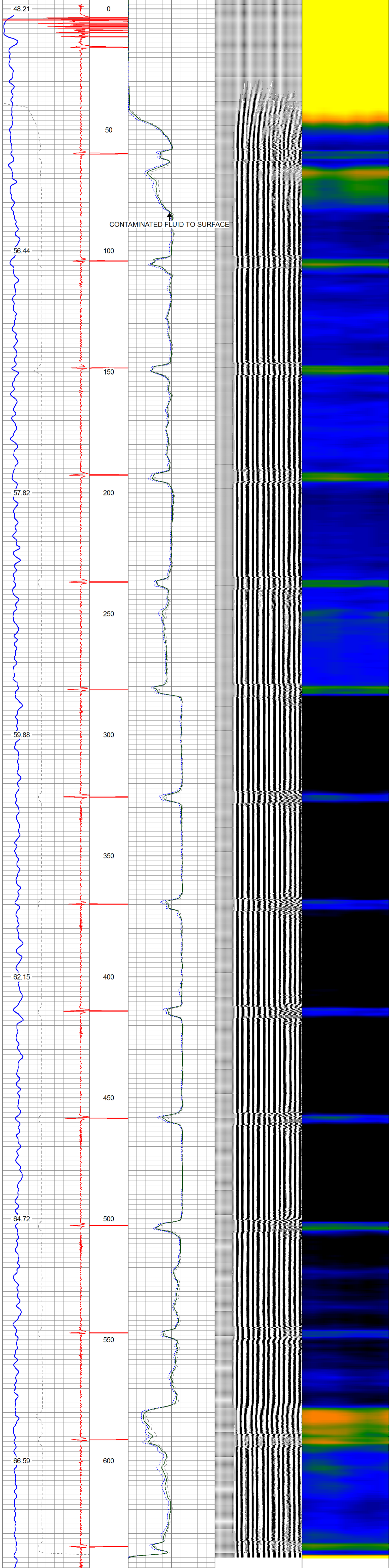
Comments

THANK YOU FOR CHOOSING SUREFIRE WIRELINE!!!

Database File cbl civitas dutch lake 09-11h.db
 Dataset Pathname pass6
 Presentation Format pdc
 Dataset Creation Mon Mar 21 12:38:45 2022
 Charted by Depth in Feet scaled 1:240

0	GR (GAPI)	200	CCL\$1	0	AMPMIN	100	200	WWF5FT (usec)	1200	1	SECTORS	8
10	CCL\$1	-1.1	0.5	0.8	0	AMPMAX	100					
400	TT3FT (usec)	200			0	AMP3FT (mV)	100					

GCT_TEMP (degF)



0	GR (GAPI)	200	CCL\$1	0	AMPMIN	100	200	WWF5FT (usec)	1200	1	SECTORS	8
10	CCL\$1	-1.1	0.5	0.8	0	AMPMAX	100					
400	TT3FT (usec)	200			0	AMP3FT (mV)	100					

GCT_TEMP (degF)



GAMMA RAY CCL
CEMENT BOND
SECTOR VDL

Company: CIVITAS
Well: DUTCH LAKE 9-11H
Field: WATTENBERG
County: WELD
State: COLORADO
Location: APT # : 05-1233350
Other Services:

Permanent Dam: CIL
Log Measured From: KB
Emission: 4719
Date: MARCH 22, 2022
Log Measured From: 01, 4719

Estimated Cement Top: 10.00
Time Logger on Station: 822.505
Equipment Number: GREG NOLAN
Recorded By: JIM ADAMS
Run Number: 1101

Estimated Cement Top: 10.00
Time Logger on Station: 822.505
Equipment Number: GREG NOLAN
Recorded By: JIM ADAMS
Run Number: 1101

Estimated Cement Top: 10.00
Time Logger on Station: 822.505
Equipment Number: GREG NOLAN
Recorded By: JIM ADAMS
Run Number: 1101

<<< Fold Here >>>

All interpretations are opinions based on inferences from electrical & other measurements and we cannot and do not guarantee the accuracy or correctness of any interpretation, and we shall not, except in the case of gross or willful negligence on our part, be liable or responsible for any loss, costs, damages, or expenses incurred or sustained by anyone resulting from any interpretation made by any of our officers, agents or employees. These interpretations are also subject to our general terms and conditions set out in our current Price Schedule.

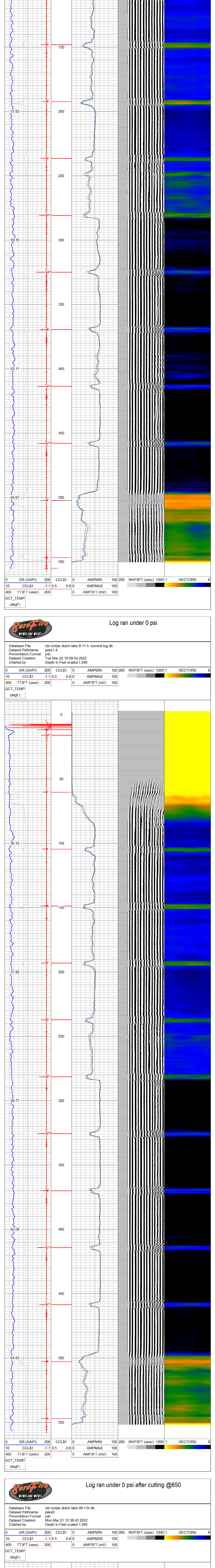
Comments

THANK YOU FOR CHOOSING SUREFIRE WIRELINE!!!

Log ran under 500 psi

Database File: cbi civitas dutch lake 9-11 h second log.db
Presentation Format: pass1.5
Dataset Pathname: pdc
Dataset Creation: Tue Mar 22 10:20:14 2022
Charted by: Depth in Feet scaled 1.240

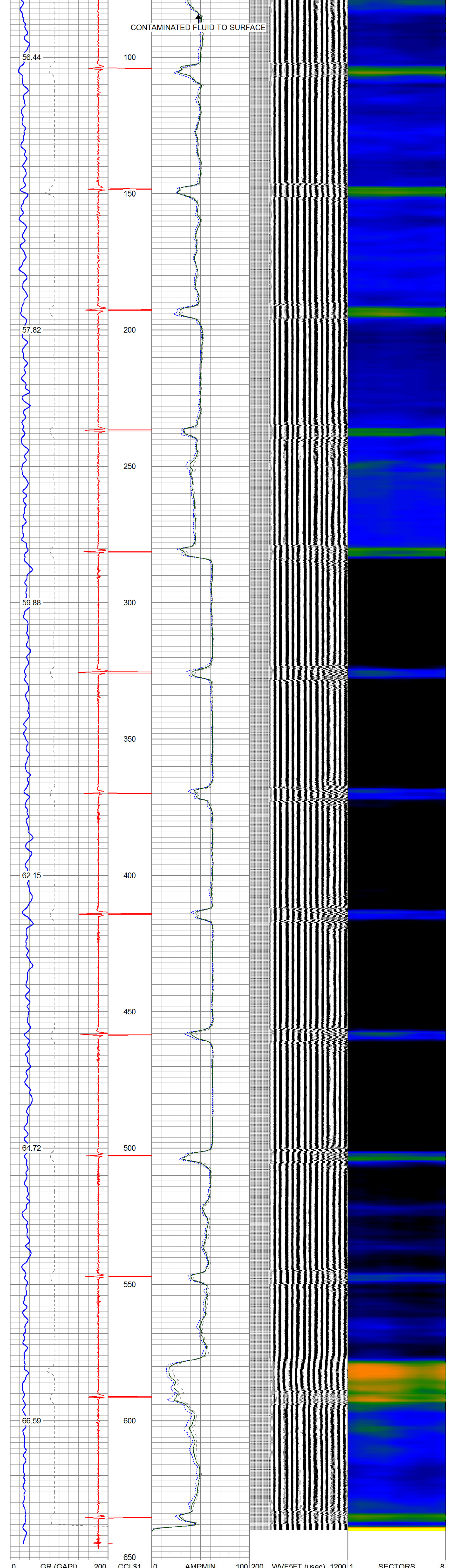
0 GR (GAPI) 200 CCLS1 0 AMPMIN 100 200 WWF5FT (usec) 1200 1 SECTORS 8
10 CCLS1 -1.1 0.5 0.8 0 AMPMAX 100
400 TT3FT (usec) 200 0 AMP3FT (mV) 100
GCT_TEMP (degF)



Log ran under 0 psi

Database File: cbi civitas dutch lake 9-11 h second log.db
Presentation Format: pass1.4
Dataset Pathname: pdc
Dataset Creation: Tue Mar 22 10:09:04 2022
Charted by: Depth in Feet scaled 1.240

0 GR (GAPI) 200 CCLS1 0 AMPMIN 100 200 WWF5FT (usec) 1200 1 SECTORS 8
10 CCLS1 -1.1 0.5 0.8 0 AMPMAX 100
400 TT3FT (usec) 200 0 AMP3FT (mV) 100
GCT_TEMP (degF)



Log ran under 0 psi after cutting @650

Database File: cbi civitas dutch lake 09-11h.db
Presentation Format: pass6
Dataset Pathname: pdc
Dataset Creation: Mon Mar 21 12:38:45 2022
Charted by: Depth in Feet scaled 1.240

0 GR (GAPI) 200 CCLS1 0 AMPMIN 100 200 WWF5FT (usec) 1200 1 SECTORS 8
10 CCLS1 -1.1 0.5 0.8 0 AMPMAX 100
400 TT3FT (usec) 200 0 AMP3FT (mV) 100
GCT_TEMP (degF)

