

## Sonic Cement Bond Log

API No.

05-125-11833-00

Company **OWN RESOURCES OPERATING**Well **SHIVELY #02-12**Field **BEECHER ISLAND**County **YUMA** State **COLORADO**

Location

Sec: **2** Twp: **3S** Rge: **44W**

Other Services

Elevation


Permanent Datum **GROUND LEVEL** Elevation  
Log Measured From **KELLY BUSHING 5' Ft. Above Perm. Datum**  
Drilling Measured From **KELLY BUSHING**K.B.  
D.F.  
G.L.Run Number **ONE**Date Survey **11/19/2021**Date Cementing **N/A**Type Cementing Operation **PRIMARY**Depth Driller **2409'**Depth Logger **2342'**Logged Interval **2342' to 0'**Casing Driller **4.5" @ TD.**Float Collar -- D.V. Tool **////**Squeeze Depth **////**Amount & Type Cement **////**Amount & Type Admix **////**Type Fluid In Hole **WATER**Fluid Level **FULL**Salinity PPM CL **////**Weight lb/gal -- Vis. **////**Approx. Logged Cement Top **1330'**Calculated Cement Top **////**Max. Hole Temperature **100 DEG. F**Tool No. **CBL #1**Spacing Recorded **3-5'**Equipment -- Location **900** HaysRecorded By **D.WALKER**Witnessed By **ANDY BAUCKE**

&lt;&lt;&lt; Fold Here &gt;&gt;&gt;

All interpretations are opinions based on inferences from electrical or other measurements and we cannot and do not guarantee the accuracy or correctness of any interpretation, and we shall not, except in the case of gross or willful negligence on our part, be liable or responsible for any loss, costs, damages, or expenses incurred or sustained by anyone resulting from any interpretation made by any of our officers, agents or employees. These interpretations are also subject to our general terms and conditions set out in our current Price Schedule.

### Comments

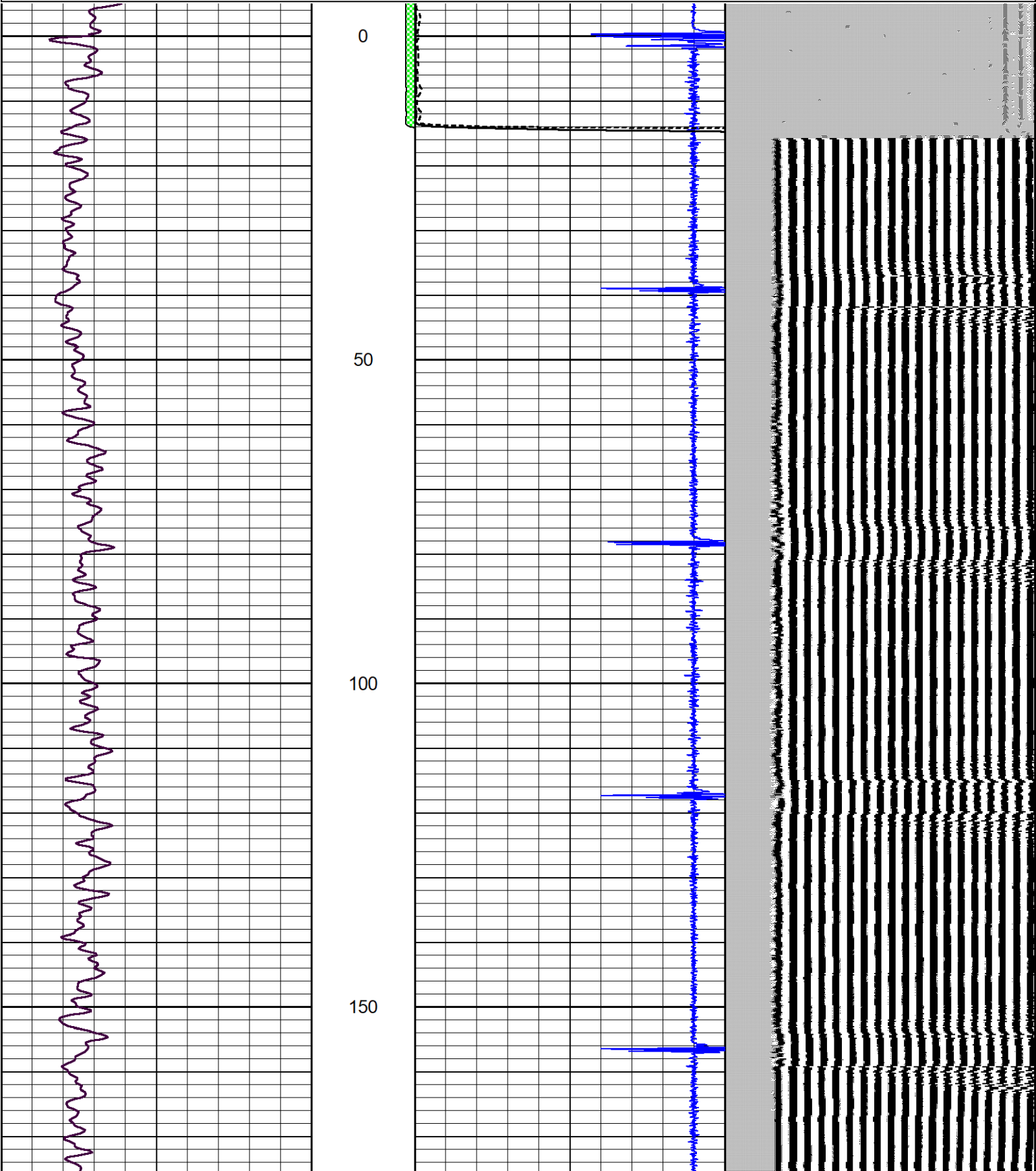
Thank you for using Log-Tech

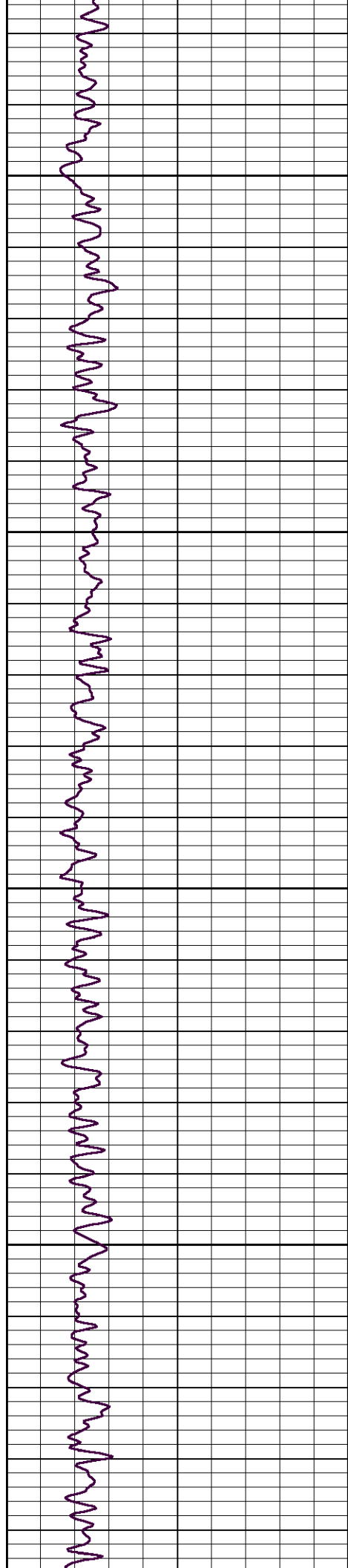
Sensor	Offset (ft)	Schematic	Description	Length (ft)	O.D. (in)	Weight (lb)
			CENT-BC275-0000	2.83	2.75	24.00

			Probe 2.75" Bowspring Centralizer			
WVF3FT	11.65					
WVF5FT	10.65					
HEADVOLT	7.40					
			CBL-Probe CB275D (CB275D_Base) 2.75" Dual Receiver Bond	8.75	2.75	90.00
			CENT-BC275-0000 Probe 2.75" Bowspring Centralizer	2.83	2.75	24.00
CCL	3.63					
GR	2.38					
			GR-GR275B (GR275analog_TopDetector_base) 275 Gamma-CCL (Pulse)	4.57	2.75	55.00
Dataset: own_resources_shively_02_12_grcbl.db: field/well/run1/pass3 Total length: 18.98 ft Total weight: 193.00 lb O.D.: 2.75 in						

Database File      own\_resources\_shively\_02\_12\_grcbl.db  
Dataset Pathname    pass3  
Presentation Format   log-tech  
Dataset Creation     Fri Nov 19 10:44:41 2021  
Charted by            Depth in Feet scaled 1:240

0	Gamma Ray (GAPI)	150	amp3ft	1.3	CCL	-0.15	200	Variable Density (usec)	1200
0	LTEN (lb)	2000	(mV)	Amplitude					
			-100    10	Amplified Amplitude (mV)					



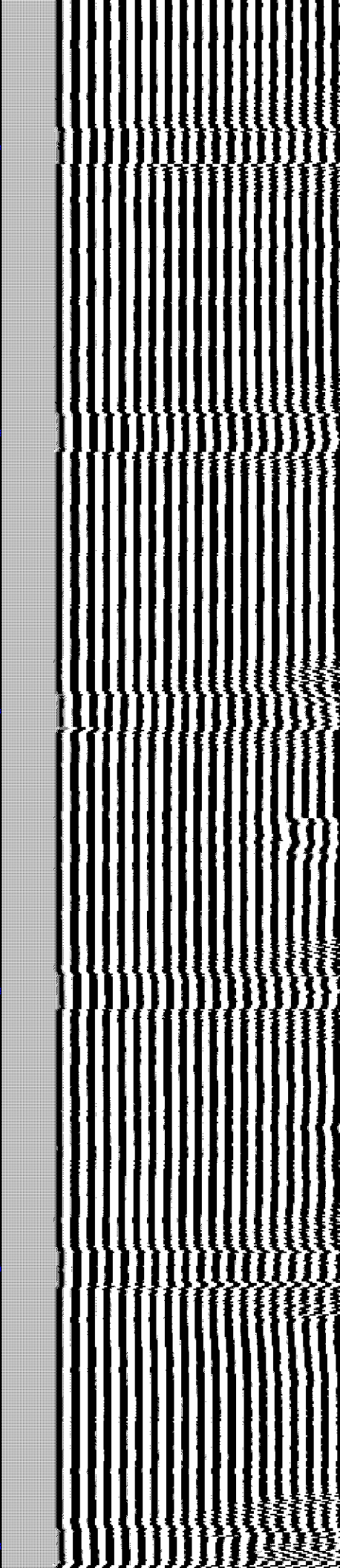
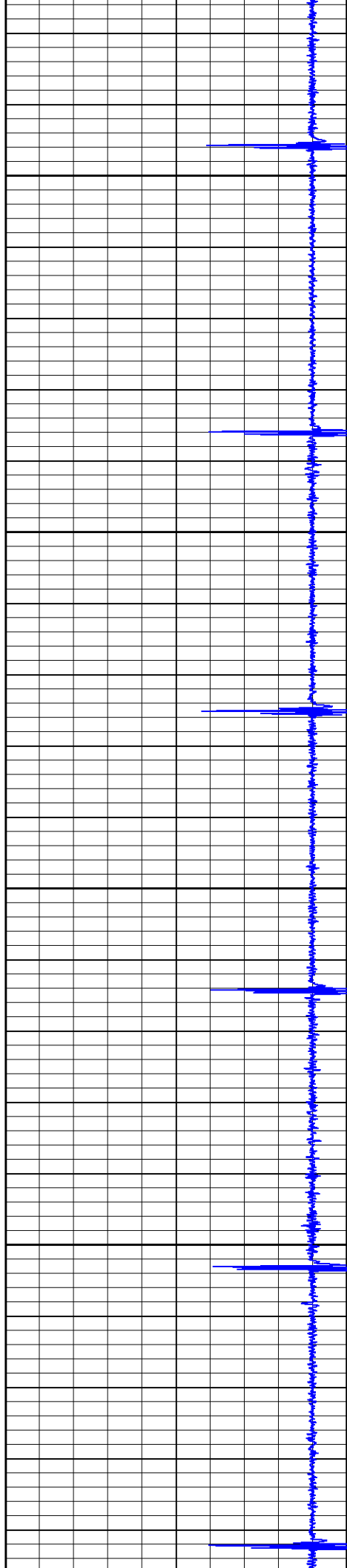


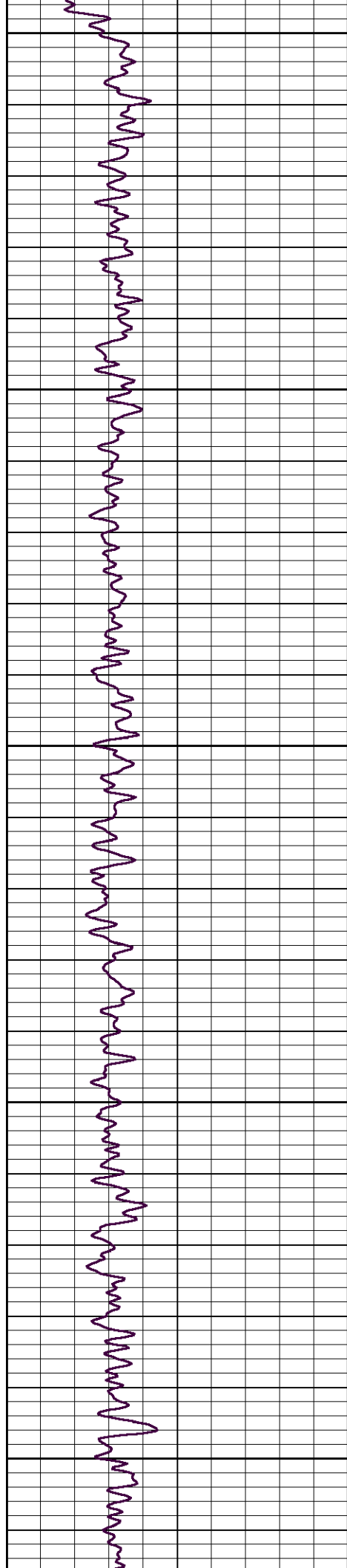
200

250

300

350





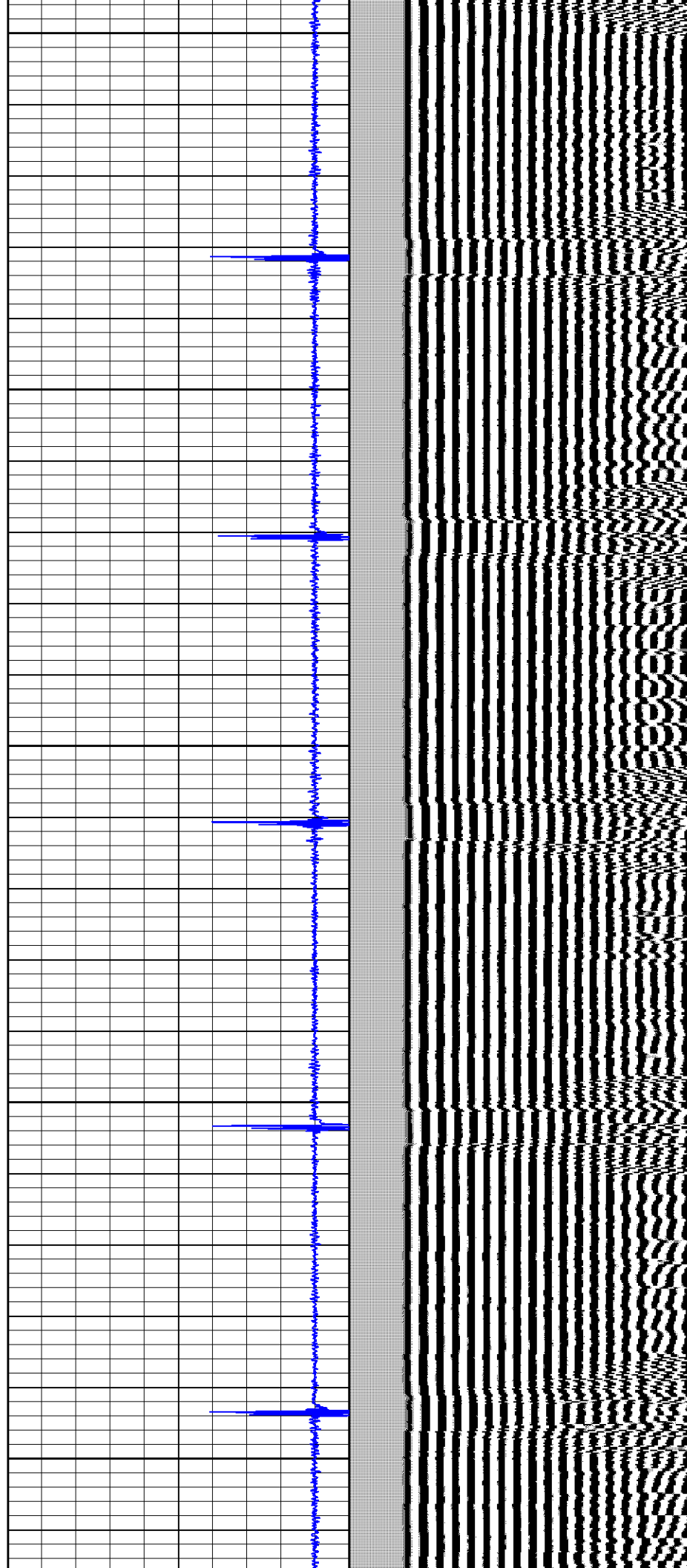
400

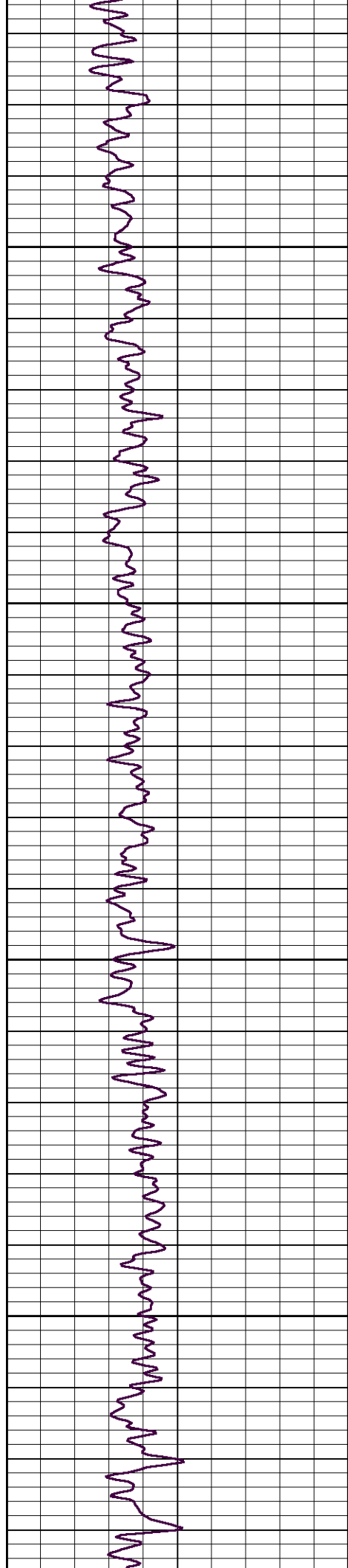
450

500

550

600



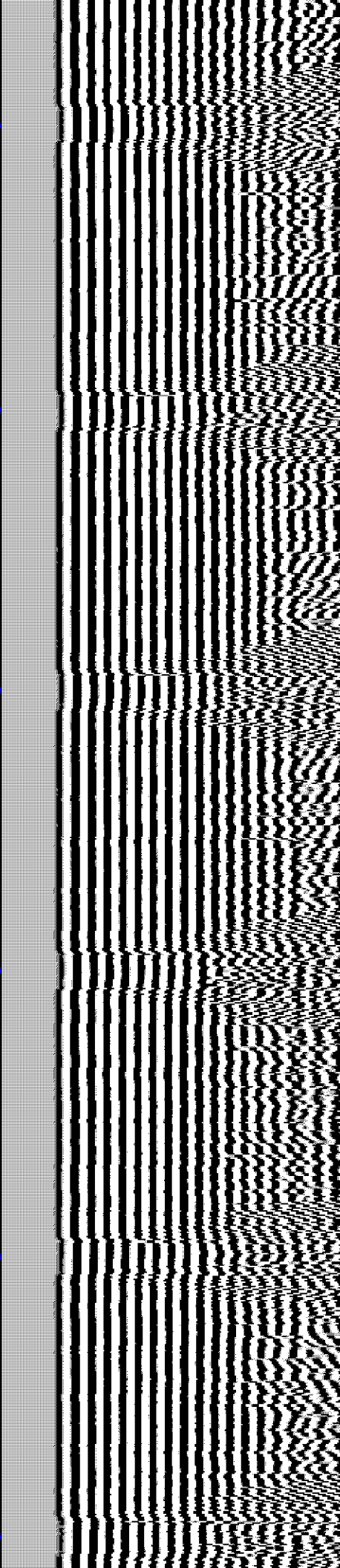
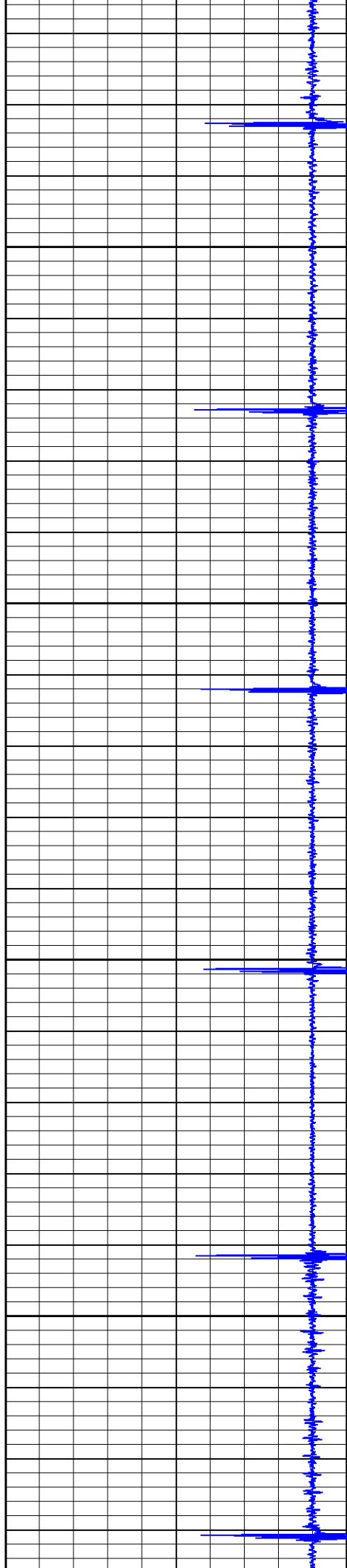


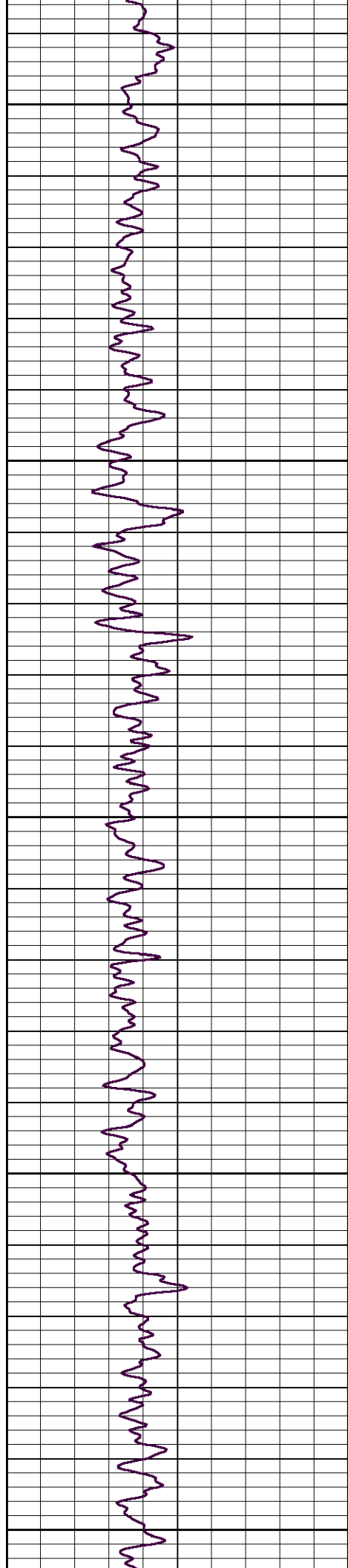
650

700

750

800





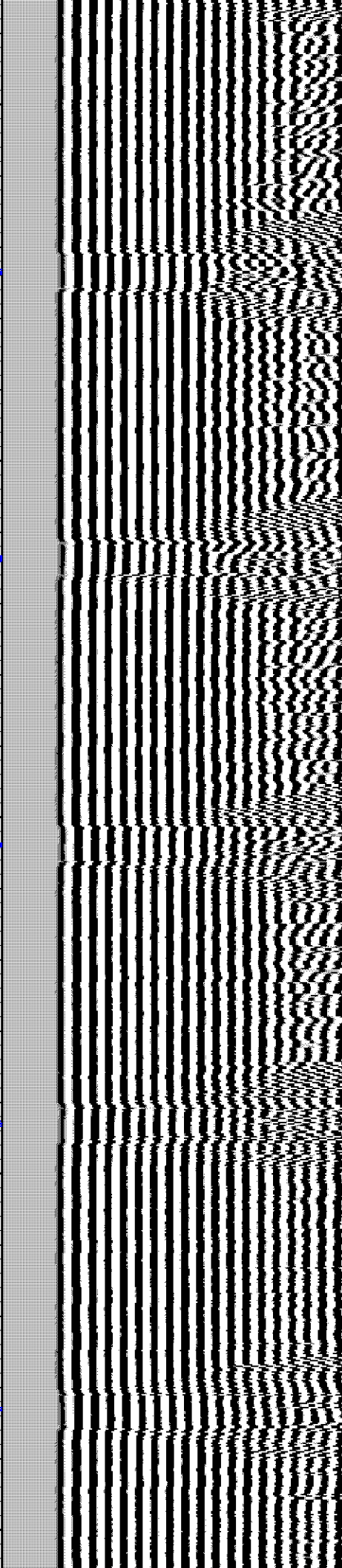
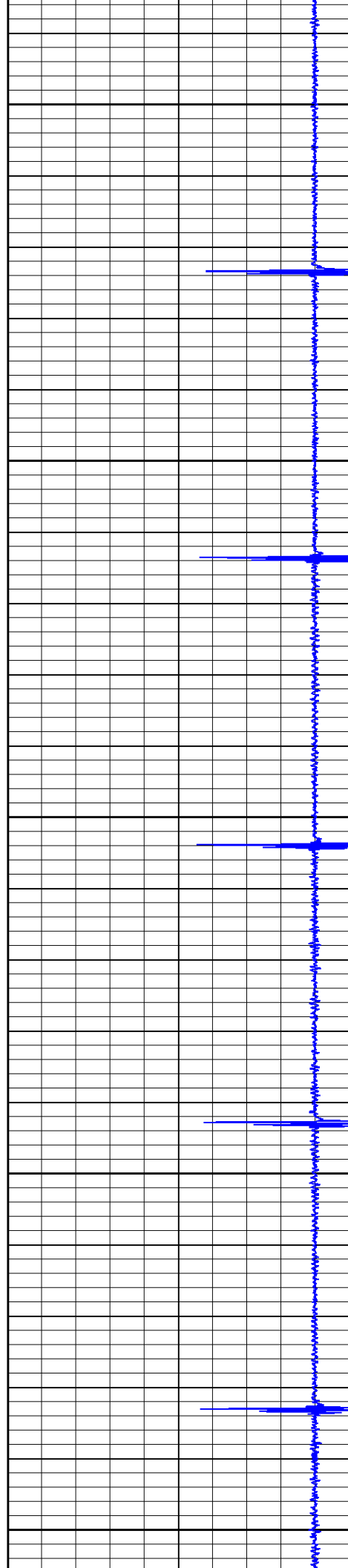
850

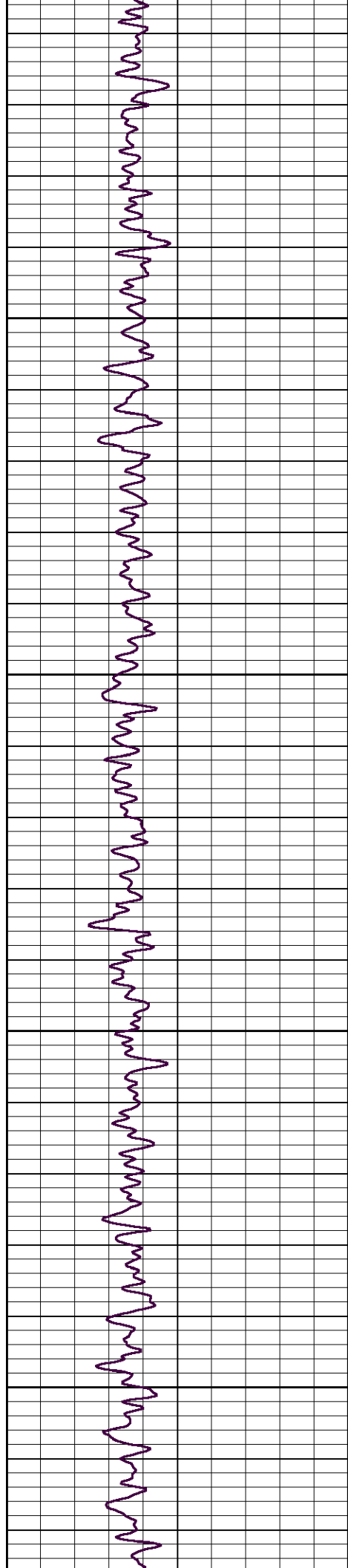
900

950

1000

1050



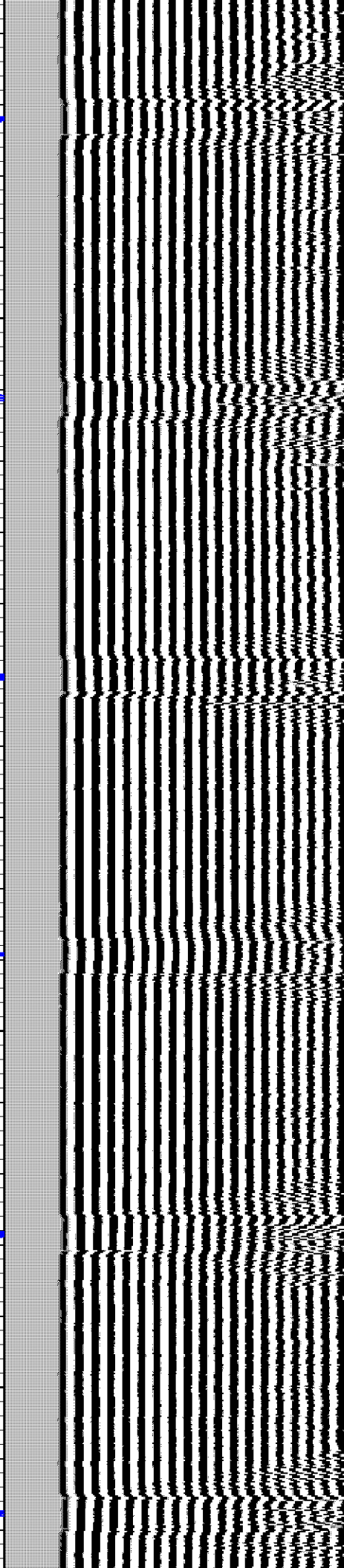
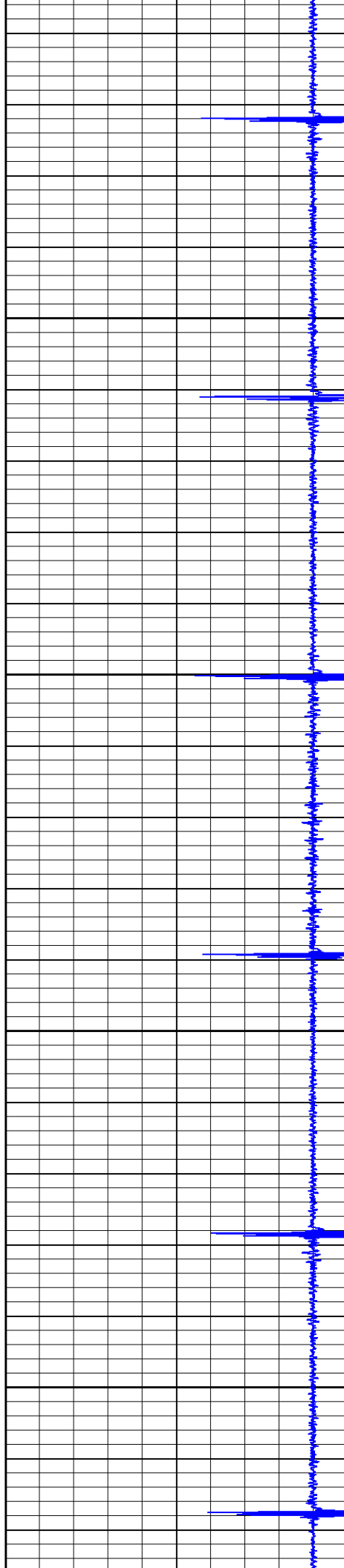


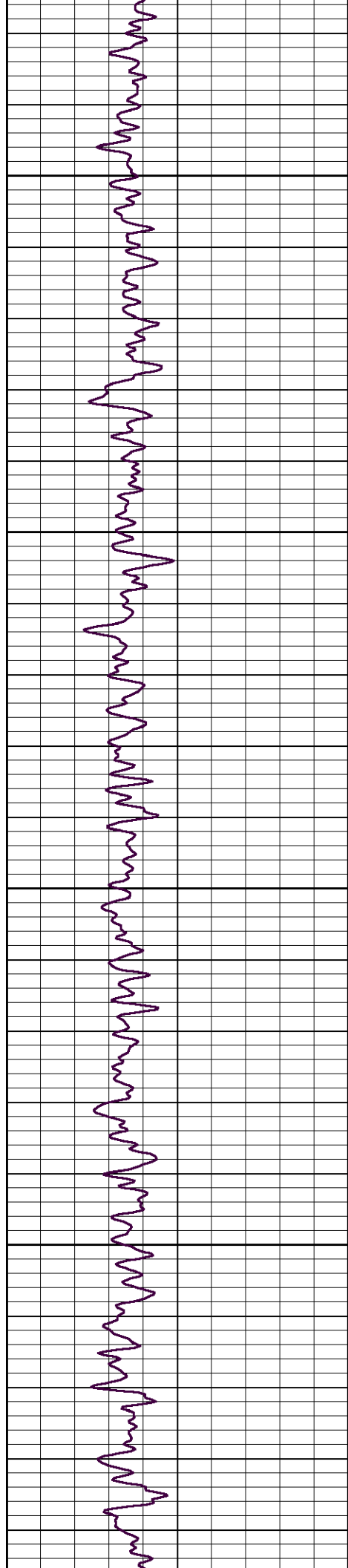
1100

1150

1200

1250





1300

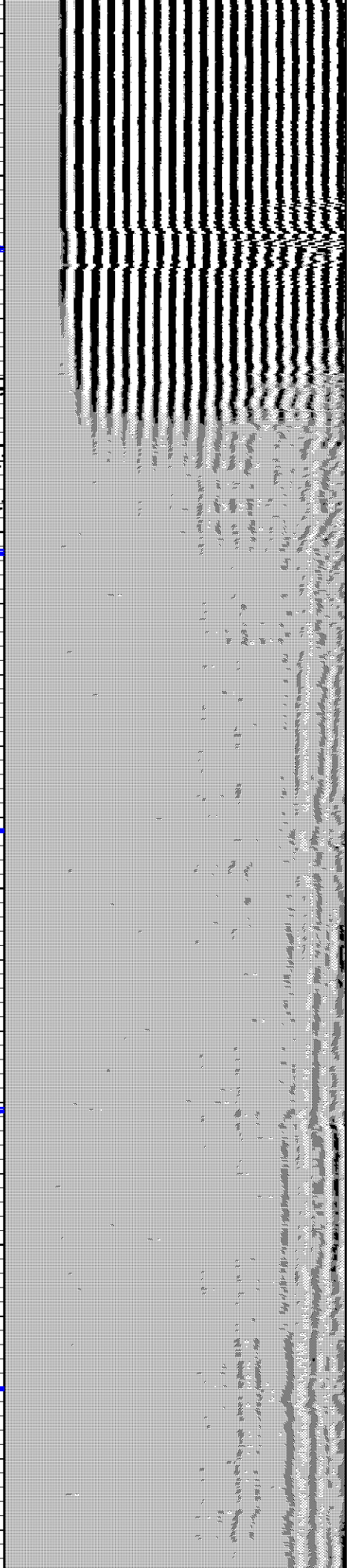
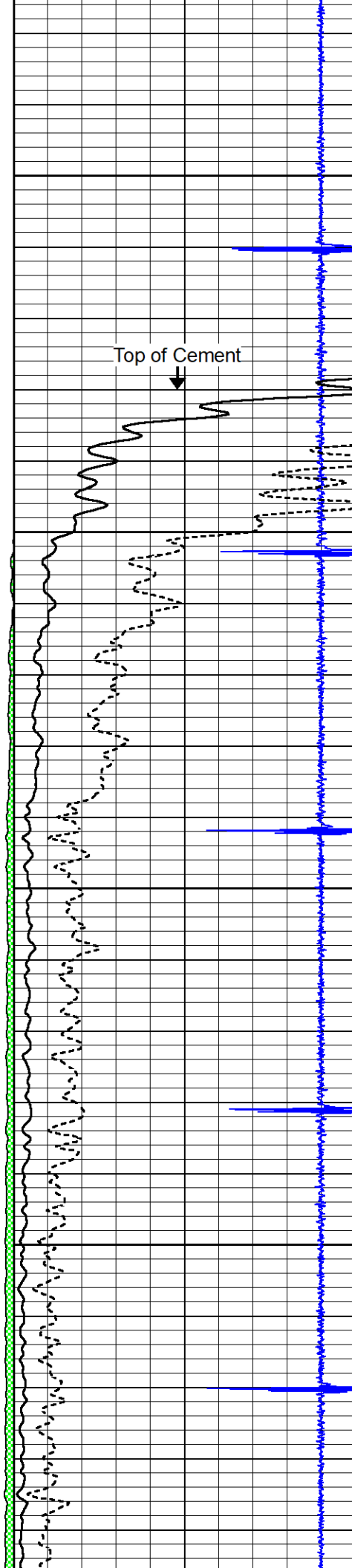
Top of Cement

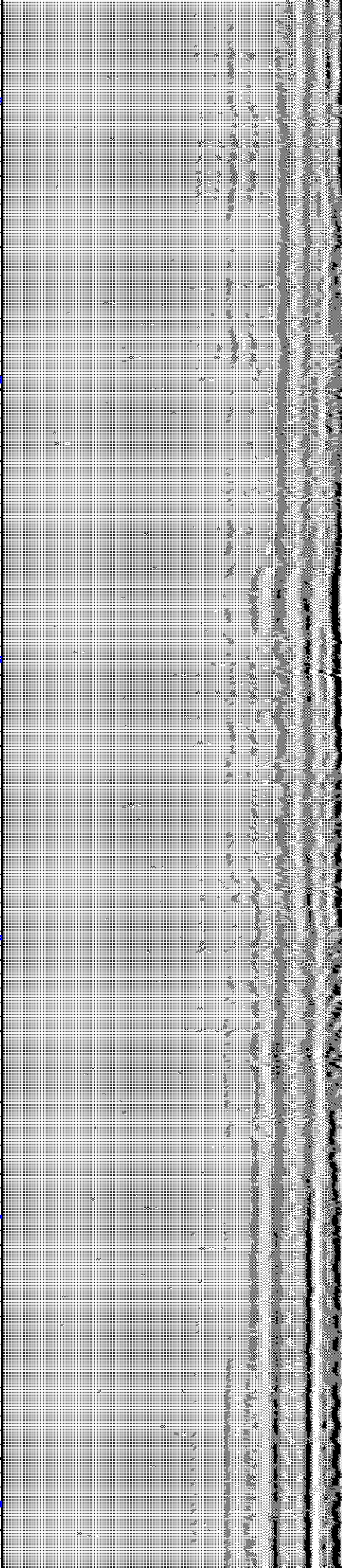
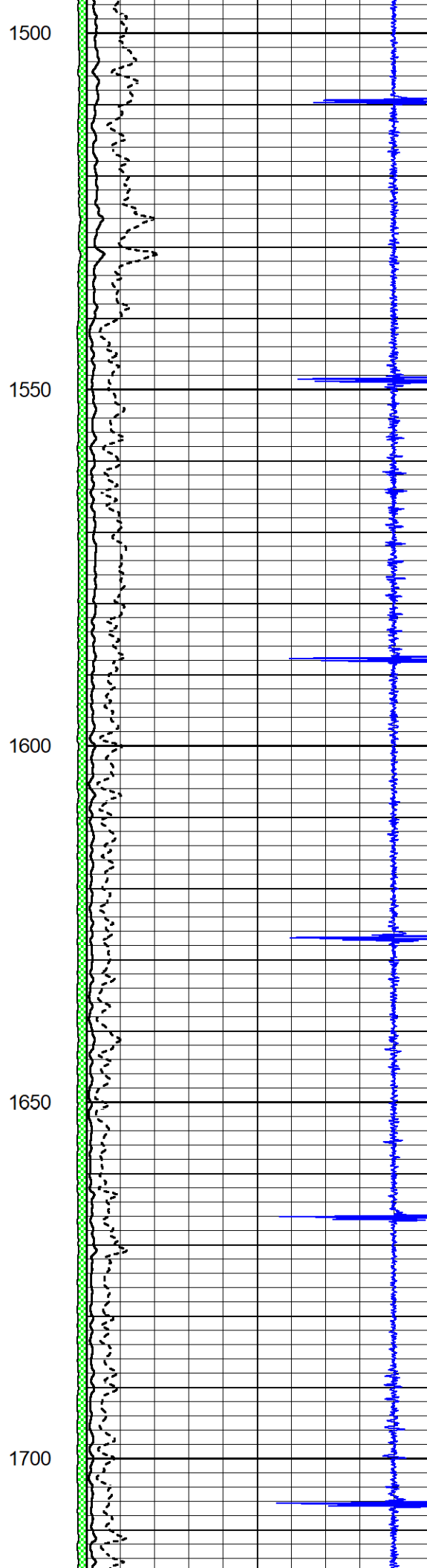
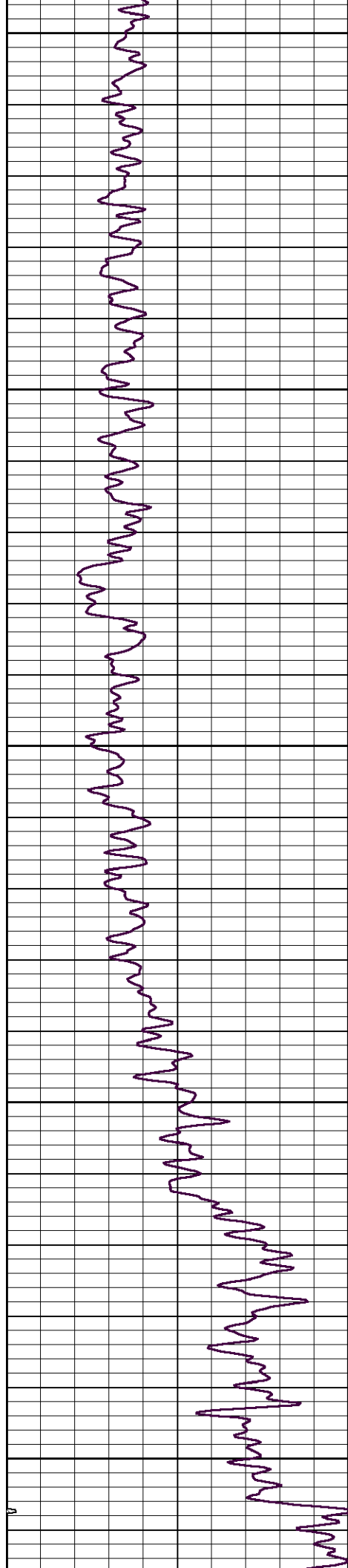


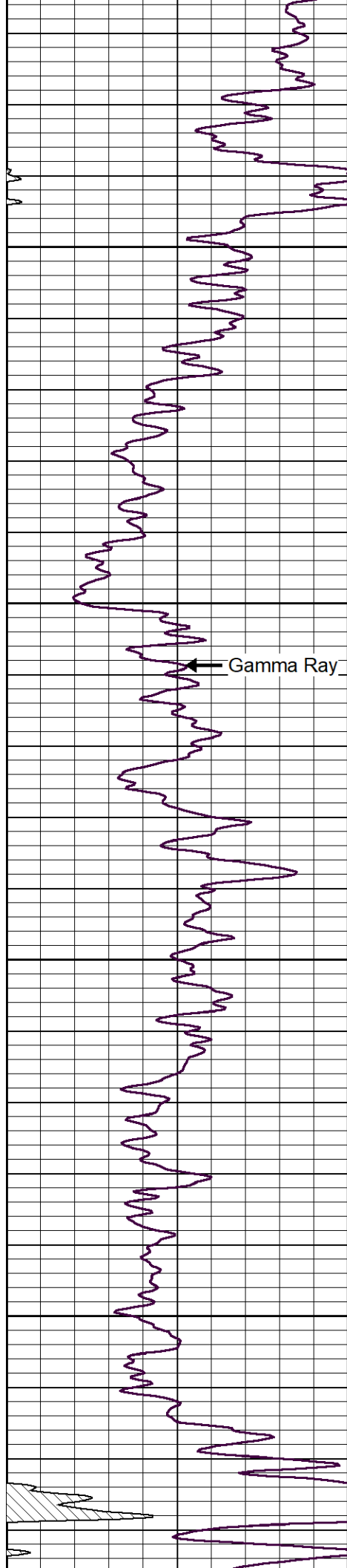
1350

1400

1450







1750

1800

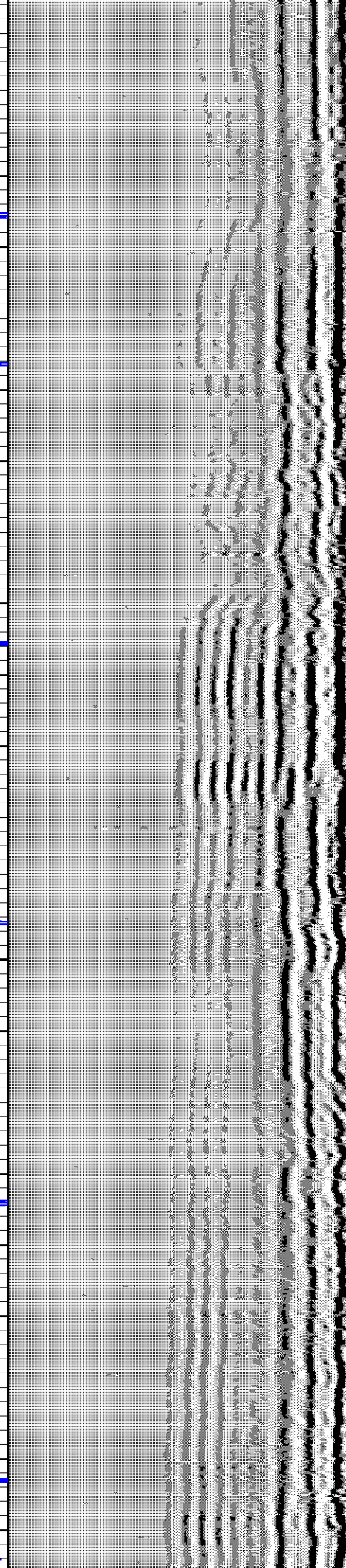
1850

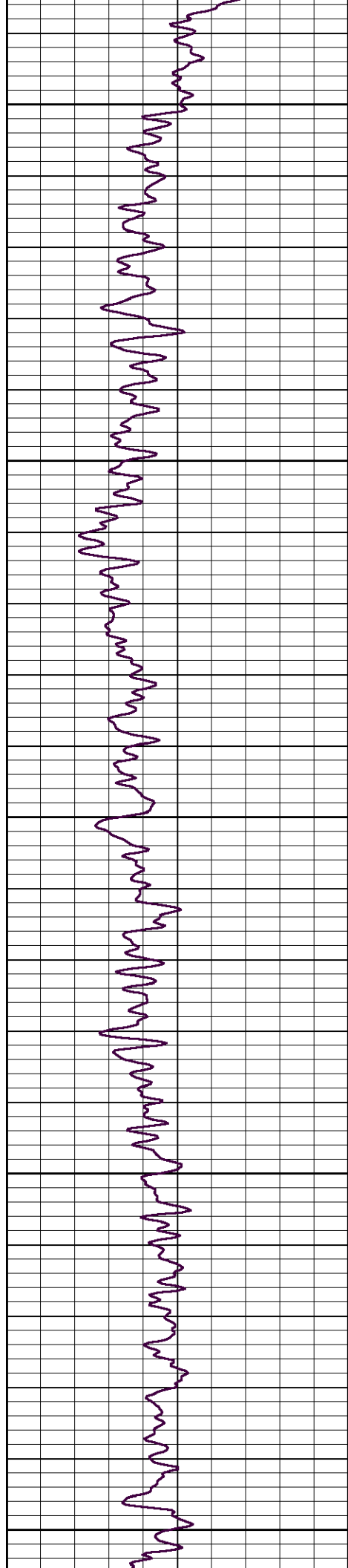
1900

Casing Collars

Amplified Amplitude

Amplitude





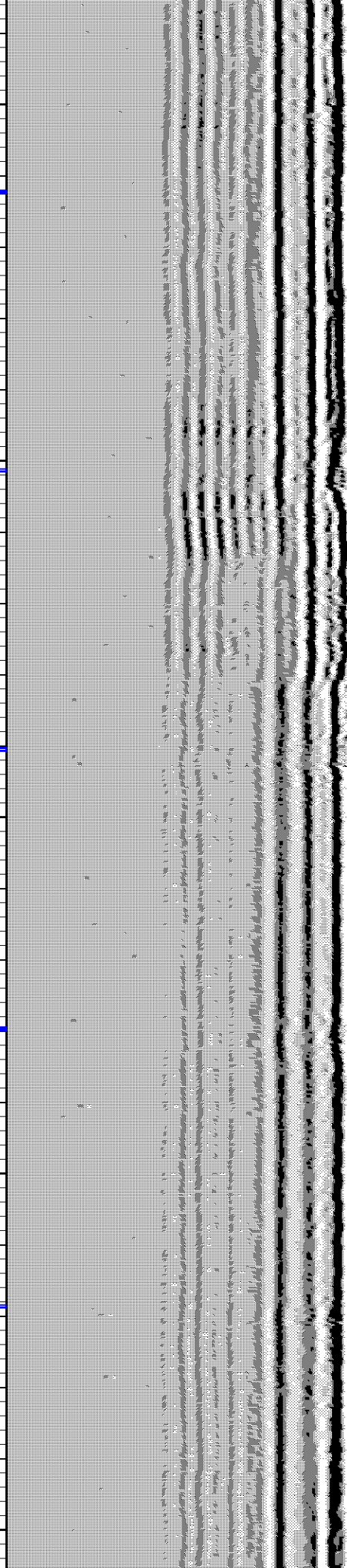
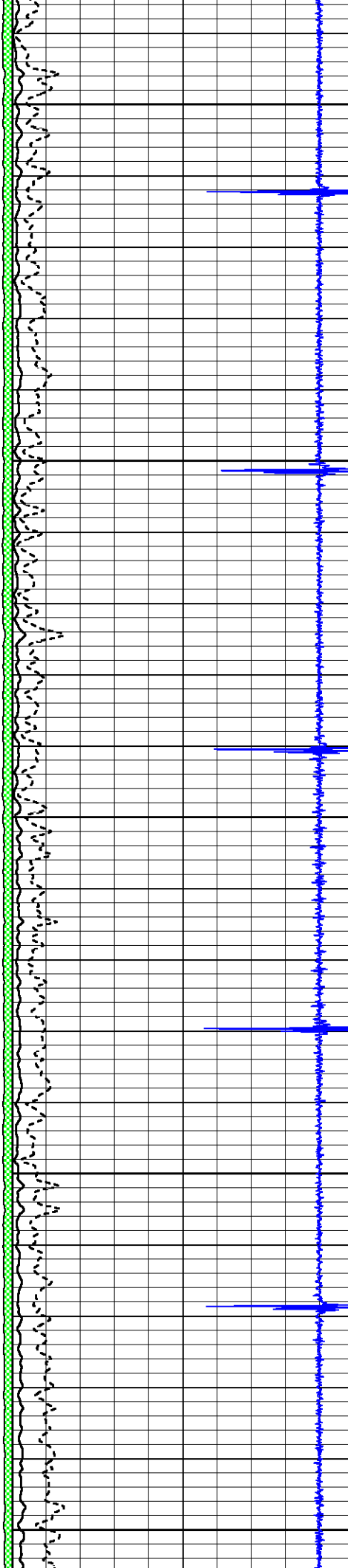
1950

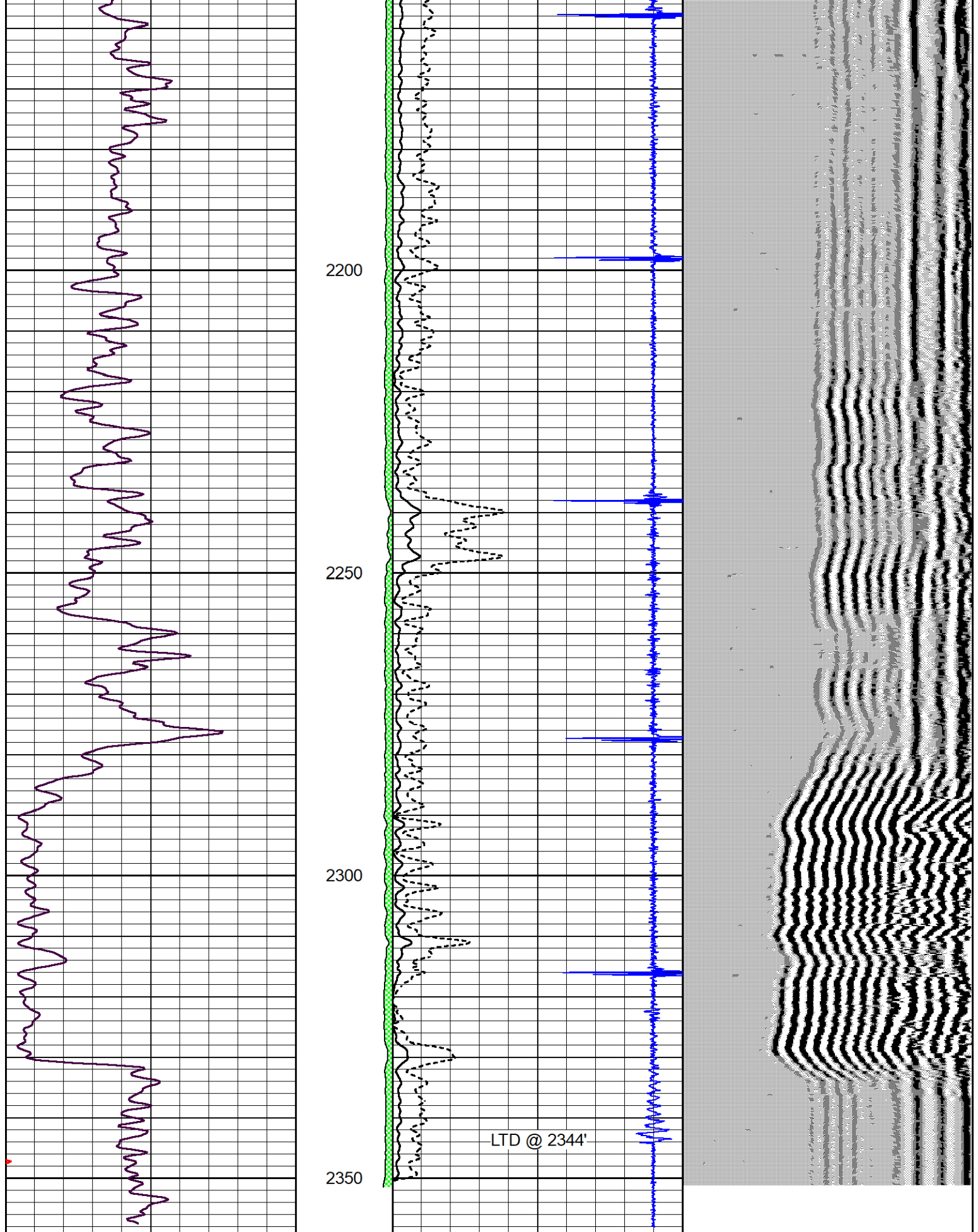
2000

2050

2100

2150





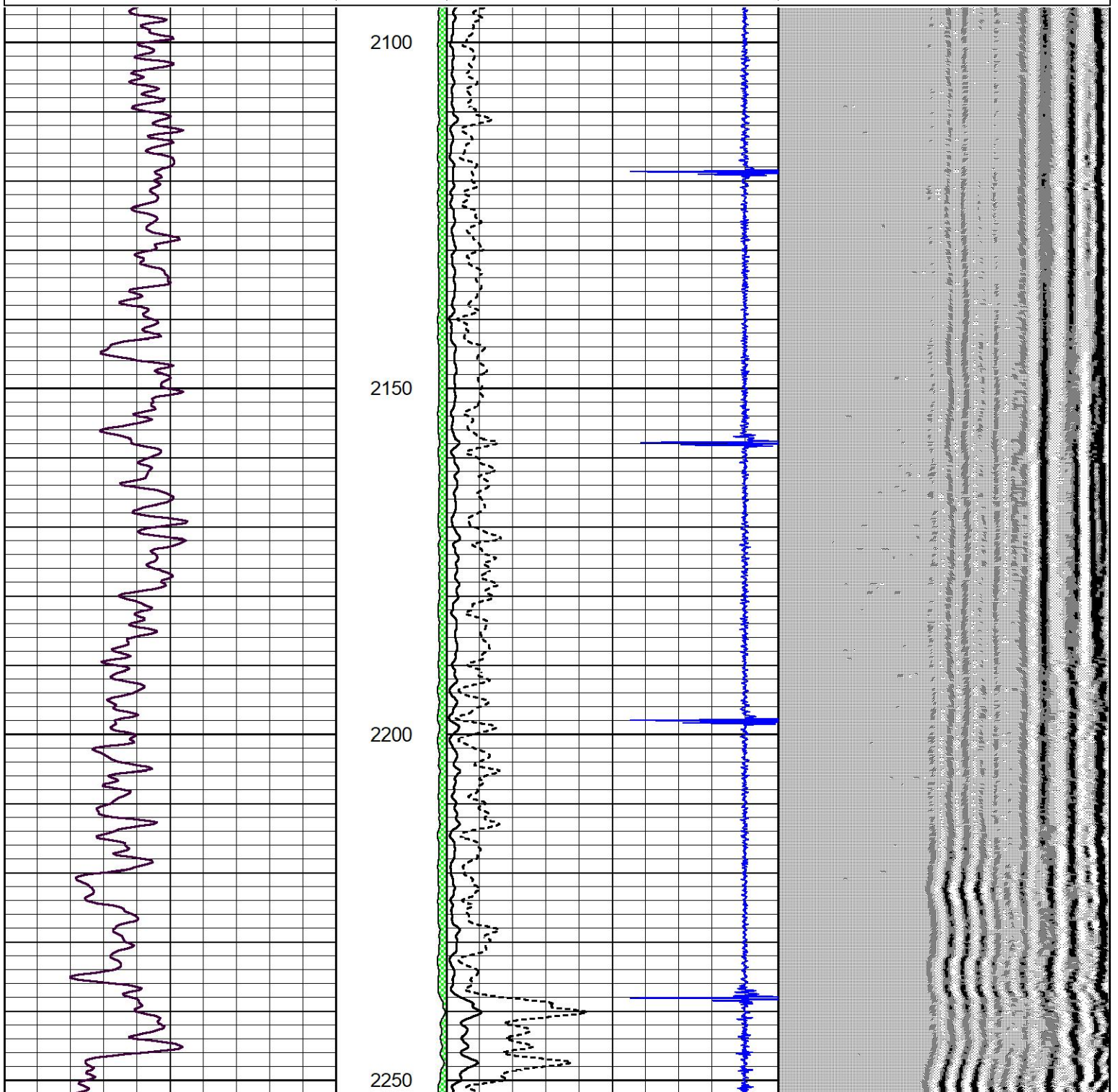
0	Gamma Ray (GAPI)	150	amp3ft	1.3	CCL	-0.15	200	Variable Density (usec)	1200
0	LTEN (lb)	2000	(mV)	Amplitude					
			-100 10	Amplified Amplitude (mV)					

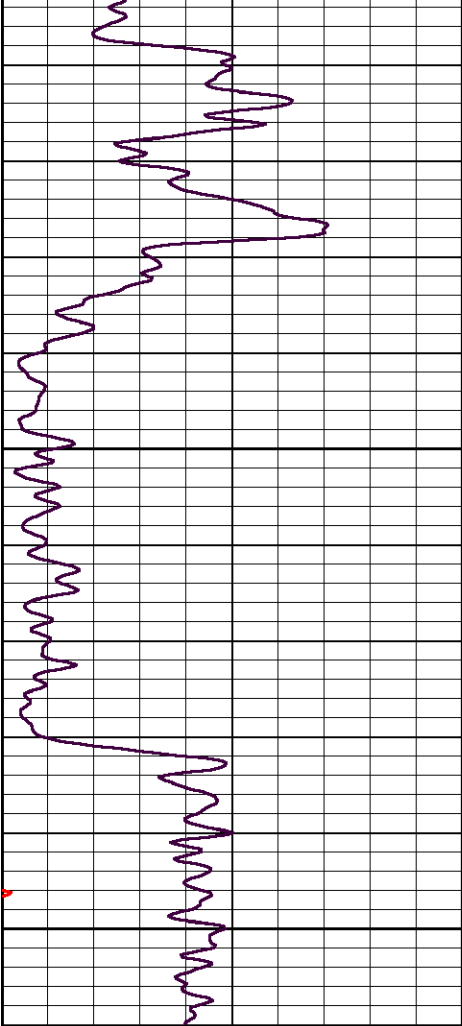


# REPEAT SECTION

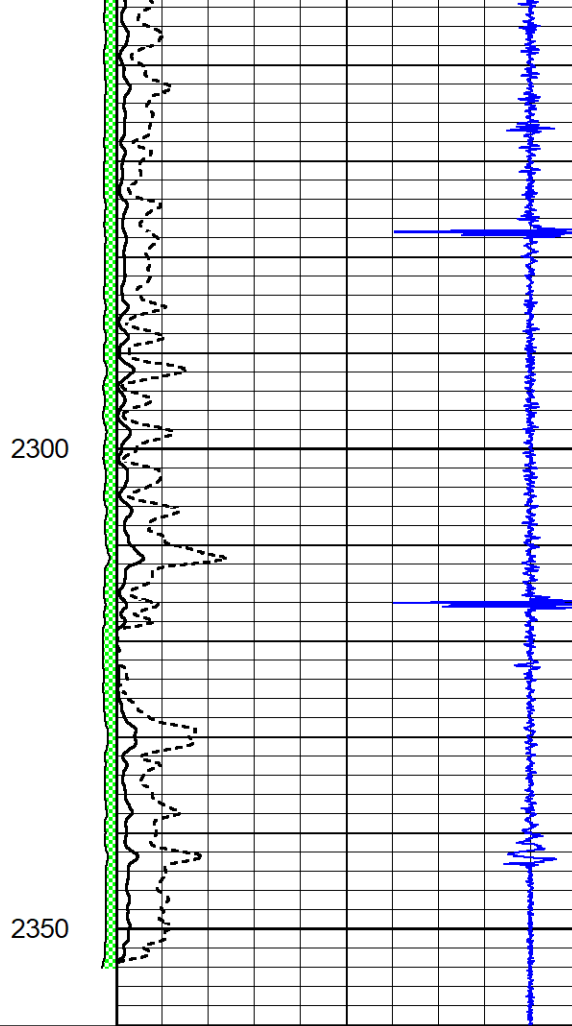
Database File own\_resources\_shively\_02\_12\_grcbl.db  
Dataset Pathname pass2  
Presentation Format log-tech  
Dataset Creation Fri Nov 19 10:36:11 2021  
Charted by Depth in Feet scaled 1:240

0	Gamma Ray (GAPI)	150	amp3ft	1.3	CCL	-0.15	200	Variable Density (usec)	1200
0	LTEN (lb)	2000	(mV)	Amplitude					
			-100 10	Amplified Amplitude (mV)					

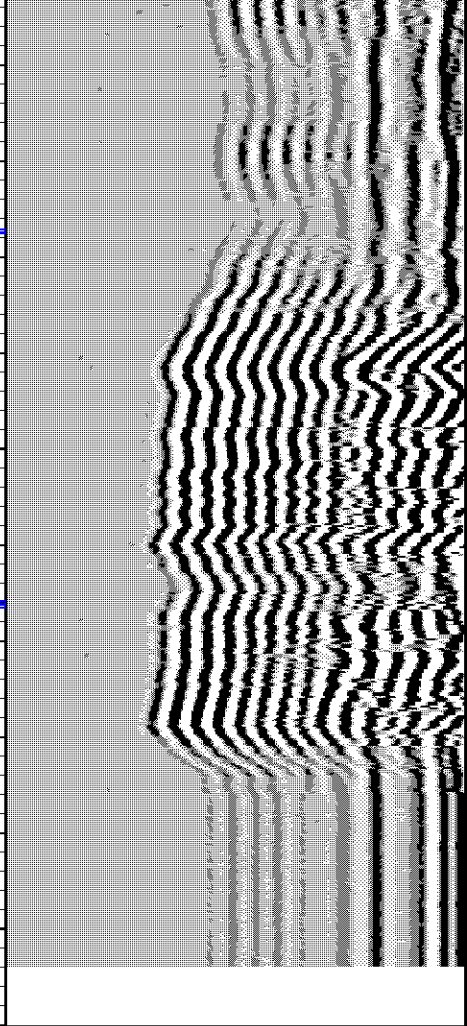




0	Gamma Ray (GAPI)	150
0	LTEN (lb)	2000



amp3ft	1.3	CCL	-0.15
(mV)	Amplitude		
-100 10	Amplified Amplitude (mV)		



200	Variable Density (usec)	1200
-----	-------------------------	------