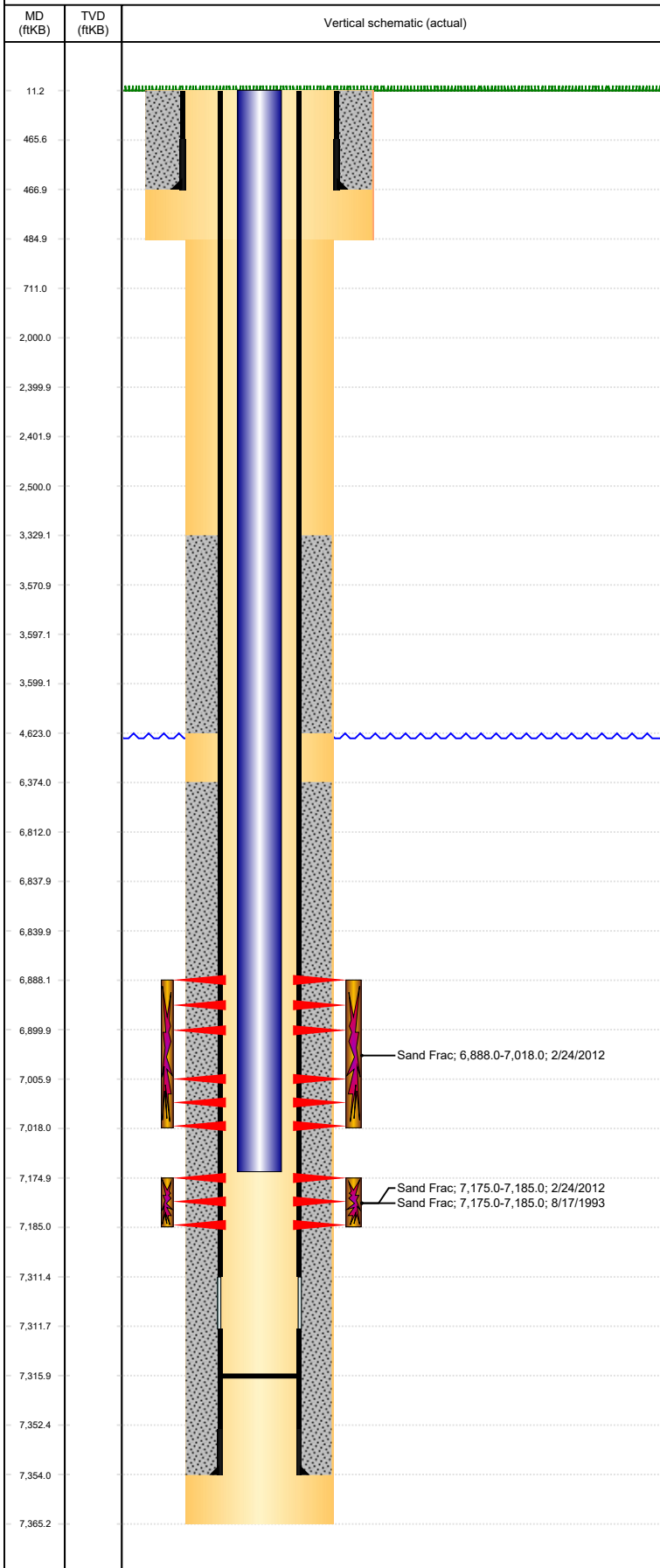


Well Name: OTTOSON 32-16

VERTICAL, ORIGINAL HOLE, 5/25/2022 3:06:07 PM



Well Header

API 05-123-17119	Business Unit DJ BASIN	District 15	Well Config VERTICAL
Original KB Elevation (ft) 4,812	KB - GL / MSL (ftKB) 11.00	Spud Date 8/5/1993	P & A Date
Comment			

Directions To Well

RDS 74 & 41, NORTHERN 3/8, WEST 3/8, SOUTH INTO.

Congressional Location

Quarter 3 SE	Quarter 4 SE	Section 32	Township 7	Twntshp N/S Dir N	Range 65	Range E/W Dir W
-----------------	-----------------	---------------	---------------	----------------------	-------------	--------------------

Bottom Hole Legal Location

Bottom Hole Legal Location

Plug Back Total Depths

Date	Depth (ftKB)	Method	Com
8/10/1993	7,311.3	CASING TALLY	TOP OF LATCH DOWN PLATE
8/13/1993	7,282.0	CASED HOLE LOG	DEPTH LOGGER
8/24/1993	7,275.0	TUBING TALLY	C/O TO 7275
3/14/2012	7,316.0	TAG	REMAINDER PUMP OFF BIT SUB AND ROCK BIT.

Wellbore Sections

Section Des	Size (in)	Act Top, MD (ftKB)	Act Btm, MD (ftKB)
SURFACE	12 1/4	11	485
PRODUCTION	7 7/8	485	7,365

Zone Statuses

Zone Name	Status Date	Status	Fluid Type	Job	Prod Method
CODELL	9/5/1993	PR		DRILLING/CO...	
CODELL	2/28/2012	PR		RE-FRAC & R...	
NIOBRARA	2/28/2012	PR		RE-FRAC & R...	

Casing Strings

Surface, 467.0ftKB

Casing Description	Run Date	OD (in)	Wt/Len (l...)	Grade	Top, MD (ft...)	MD (ftKB)
Surface	8/5/1993	8 5/8	24.00	M-50	11.0	467.0

Production, 7,354.0ftKB

Casing Description	Run Date	OD (in)	Wt/Len (l...)	Grade	Top, MD (ft...)	MD (ftKB)
Production	8/10/1993	4 1/2	11.60	M-75	11.0	7,354.0

Cement

Description	Top Depth (ftKB)	Bottom Depth (ftKB)
SURFACE CASING CEMENT	11.0	467.0
PRODUCTION CASING CEMENT	3,329.0	4,623.0
PRODUCTION CASING CEMENT	6,374.0	7,354.0

Tubing Strings

Tubing Description	Run Date	String...	ID (in)	Wt (lb/ft)	Grade	Len (ft)	Set De...
Tubing - Production	8/24/1993	2 3/8	2.00	4.70	J-55	7,132.00	

Tubing Components

Item Des	OD (in)	Wt (lb/ft)	Grade	Jts	Len (ft)	Btm (ftKB)	Btm (TVD) (ftKB)
Tubing	2 3/8	4.70	J-55	241	7,130.50	7,141.5	
Pump Seating Nipple	2 3/8		J-55	1	1.00	7,142.5	
Notched collar	2 3/8		J-55	1	0.50	7,143.0	
Tubing Description	Run Date	String...	ID (in)	Wt (lb/ft)	Grade	Len (ft)	Set De...
Tubing - Production	3/14/2012	2 3/8	2.00	4.70	J-55	7,140.00	

Tubing Components

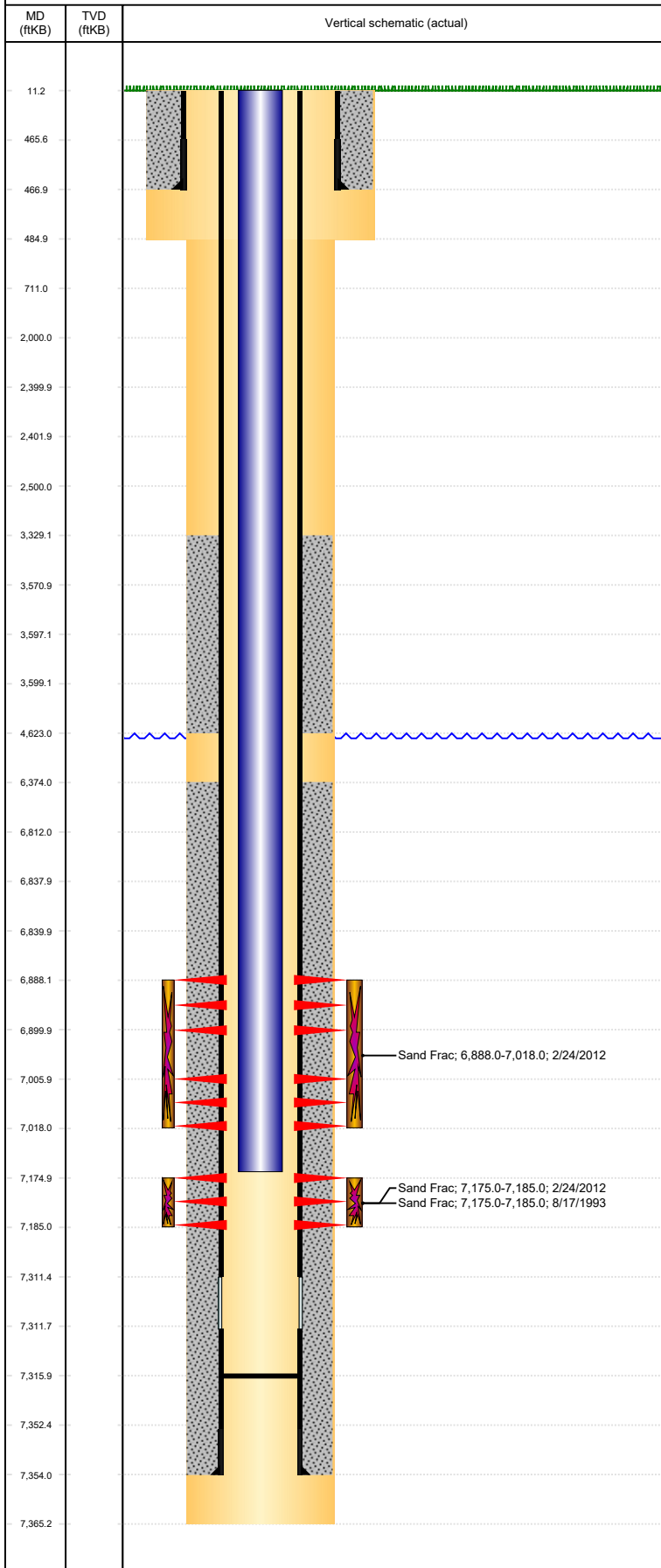
Item Des	OD (in)	Wt (lb/ft)	Grade	Jts	Len (ft)	Btm (ftKB)	Btm (TVD) (ftKB)
EUE 8rd Tubing	2 3/8	4.70	J-55	241	7,138.15	7,149.2	
Seating Nipple	2 3/8	5.40	J-55	1	1.20	7,150.4	
Remainder pump off bit sub	2 3/8		J-55	1	0.65	7,151.1	

Other In Hole

Run Date	Des	Make	OD (in)	Top (ftKB)	Btm (ftKB)	Pr op R un 2

Well Name: OTTOSON 32-16

VERTICAL, ORIGINAL HOLE, 5/25/2022 3:06:07 PM



Logs

Date	Type	Top, MD (ftKB)	Btm, MD (ftKB)
8/8/1993	COMPENSATED DENSITY	3,740.0	7,363.0
8/8/1993	INDUCTION	467.0	7,363.0
8/13/1993	CEMENT BOND	3,100.0	7,277.0

Perforation Data

Linked Zone	Bnch/St g	Sum of Entered Shot Total	Top (ftKB)	Btm (ftKB)	Date
NIOBRARA, ORIGINAL HOLE	A	24	6,888.00	6,900.00	2/24/2012
NIOBRARA, ORIGINAL HOLE	B	24	7,006.00	7,018.00	2/24/2012
CODELL, ORIGINAL HOLE		20	7,175.00	7,185.00	8/13/1993
Total		68			

Stimulation Intervals

Interval...	Start Date	Primary Job Type	Zone
1	8/17/1993	DRILLING/COMPLETION - ORIGINAL	CODELL, ORIGINAL HOLE
Technical Result		Tech Result Details	Tech Result Note
Comment			
Interval...	Start Date	Primary Job Type	Zone
1	2/24/2012	RE-FRAC & RECOMPLETE	NIOBRARA, ORIGINAL HOLE
Technical Result		Tech Result Details	Tech Result Note
Success		According to Plan	
Comment			
(NIOBRARA) OPEN 2296 PSI, BREAK 4080 @ 2.4, ISIP 3479, FINAL ISIP 3592, 5 MIN 3331, AVG VIS 16.9, AVG PH 10.38, AVG TEMP 67.9			
Interval...	Start Date	Primary Job Type	Zone
2	2/24/2012	RE-FRAC & RECOMPLETE	CODELL, ORIGINAL HOLE
Technical Result		Tech Result Details	Tech Result Note
Success		According to Plan	
Comment			
(CODELL): OPEN 0 PSI, 50 BBL TO LOAD, BREAK 3052 @ 4BPM, ISIP 2296, 5 MIN 1711, INCREASED RATE UP TO 18 BPM, PERFS OPEN 19, PERF FRICTION 86, NWB 758, PIPE FRICTION 520, TOTAL 1364, FINAL ISIP 3628, FINAL SHUT IN 3101 AVG VIS 21.3, AVG PH 10.25, AVG TEMP 67.9			