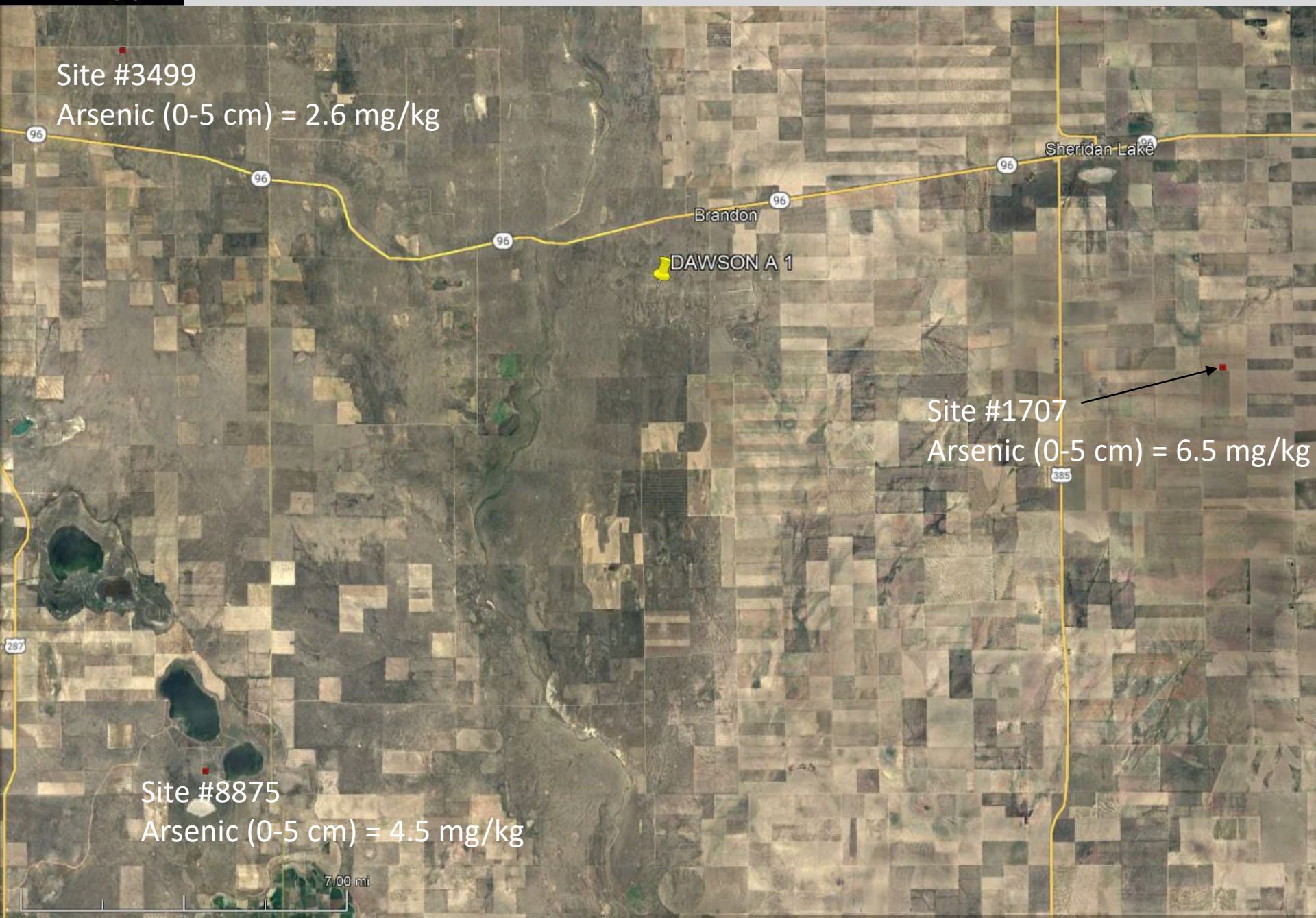


# US Soil Geochemical Landscape Sites



## US soil geochemical landscape site #1707, Kiowa county, Colorado

[Map](#) [XML](#) [JSON](#) [KML](#)
[About the site](#)
[Chemistry and mineralogy](#)

Element or mineral	Top 5cm	A horizon	C horizon	Units	Method
Lab ID	C-319321	C-319530	C-319730		
Sample depth	0-5	0-11	95-110	cm	
Quartz		37.8	31.6	wt. %	<a href="#">XRD</a>
Potassium feldspar		10.4	4.3	wt. %	<a href="#">XRD</a>
Plagioclase		11.3	10.2	wt. %	<a href="#">XRD</a>
Total feldspar		21.7	14.4	wt. %	<a href="#">XRD</a>
14Å clays			5.4	wt. %	<a href="#">XRD</a>
10Å clays		15.7	9.4	wt. %	<a href="#">XRD</a>
Kaolinite			1	wt. %	<a href="#">XRD</a>
Total clays		15.7	15.8	wt. %	<a href="#">XRD</a>
Calcite			8.9	wt. %	<a href="#">XRD</a>
Total carbonate			8.9	wt. %	<a href="#">XRD</a>
Amorphous material		24.8	29.3	wt. %	<a href="#">XRD</a>
<a href="#">Silver</a>	<1	<1	<1	mg/kg	<a href="#">ICP-MS</a>
<a href="#">Aluminum</a>	6.56	6.13	5.65	wt. %	<a href="#">ICP-AES</a>
<a href="#">Arsenic</a>	6.5	7	6.1	mg/kg	<a href="#">HYD-AA</a>
<a href="#">Barium</a>	679	683	862	mg/kg	<a href="#">ICP-AES</a>

## US soil geochemical landscape site #3499, Kiowa county, Colorado

[Map](#) [XML](#) [JSON](#) [KML](#)
[About the site](#)
[Chemistry and mineralogy](#)

Element or mineral	Top 5cm	A horizon	C horizon	Units	Method
Lab ID	C-319311	C-319519	C-319719		
Sample depth	0-5	0-4	110-125	cm	
Quartz		65.9	66.7	wt. %	<a href="#">XRD</a>
Potassium feldspar		17.8	21.2	wt. %	<a href="#">XRD</a>
Plagioclase		8.6	8.6	wt. %	<a href="#">XRD</a>
Total feldspar		26.4	29.8	wt. %	<a href="#">XRD</a>
14Å clays		0.8		wt. %	<a href="#">XRD</a>
10Å clays		3.3	3.6	wt. %	<a href="#">XRD</a>
Total clays		4.1	3.6	wt. %	<a href="#">XRD</a>
Calcite		2.1		wt. %	<a href="#">XRD</a>
Total carbonate		2.1		wt. %	<a href="#">XRD</a>
Amorphous material		1.6		wt. %	<a href="#">XRD</a>
Silver	<1	<1	<1	mg/kg	ICP-MS
Aluminum	3.55	3.92	3.46	wt. %	<a href="#">ICP-AES</a>
Arsenic	2.6	3.4	3.1	mg/kg	<a href="#">HYD-AA</a>
Barium	702	761	709	mg/kg	<a href="#">ICP-AES</a>

## US soil geochemical landscape site #8875, Kiowa county, Colorado

[Map](#) [XML](#) [JSON](#) [KML](#)
[About the site](#)
[Chemistry and mineralogy](#)

Element or mineral	Top 5cm	A horizon	C horizon	Units	Method
Lab ID	C-319402	C-319610	C-319810		
Sample depth	0-5	0-2	100-115	cm	
Quartz		45.4	39.6	wt. %	<a href="#">XRD</a>
Potassium feldspar		11.8	10.5	wt. %	<a href="#">XRD</a>
Plagioclase		9	6.4	wt. %	<a href="#">XRD</a>
Total feldspar		20.8	16.9	wt. %	<a href="#">XRD</a>
10Å clays		8.5	9.6	wt. %	<a href="#">XRD</a>
Kaolinite		0.9	1.3	wt. %	<a href="#">XRD</a>
Total clays		9.4	10.9	wt. %	<a href="#">XRD</a>
Calcite		0.3	10.2	wt. %	<a href="#">XRD</a>
Total carbonate		0.3	10.2	wt. %	<a href="#">XRD</a>
Amorphous material		24.1	22.5	wt. %	<a href="#">XRD</a>
Silver	<1	<1	<1	mg/kg	<a href="#">ICP-MS</a>
Aluminum	5	4.99	4.89	wt. %	<a href="#">ICP-AES</a>
Arsenic	4.5	3.9	7.1	mg/kg	<a href="#">HYD-AA</a>
Barium	716	709	665	mg/kg	<a href="#">ICP-AES</a>