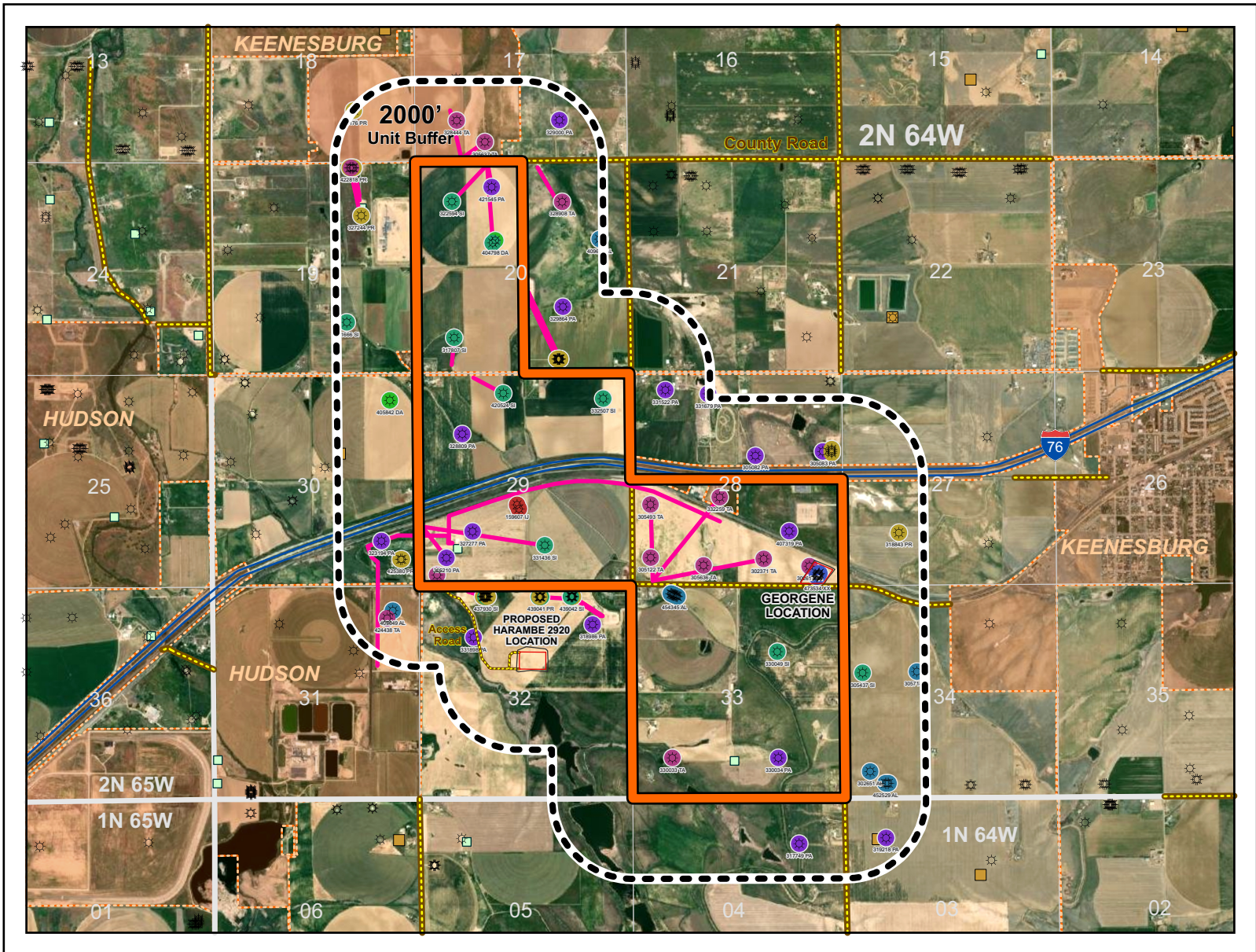


OGDP Map
HARAMBE 2929 / 2920
WELD COUNTY, COLORADO



PROPOSED HARAMBE 2929/2920 LOCATION

Legend:

Well Status

- AL - Abandoned Location
- DA - Dry and Abandoned
- IJ - Injecting
- PA - Plugged and Abandoned
- PR - Producing
- SI - Shut In
- TA - Temporarily Abandoned
- XX - Permitted Location

- Harambe Working Pad Surface
- Harambe Oil & Gas Location Maximum Disturbance Area
- Harambe / Georgene Unit
- 2000' Buffer from Working Pad Surface & Harambe - Georgene Unit

- Flowlines
- Harambe Proposed Access Road
- County Road
- City Limits
- Facility / Tank Batteries
- Pits
- ☼ Oil / Gas Well



Verdad Resources
1125 17th Street,
Suite 550
Denver, CO 80202
720-845-6900
verdadresources.com

VERDAD RESOURCES
HARAMBE 2929 / 2920

FIELD	09/14/2021	DRAFT	SW
REV X	04/11/2022	CHECK	ZAK
SHEET :	1 OF 1	JOB:	138558

OGDP Map
SW/4 NE/4, SECTION 32 T2N R64W 6TH PM
WELD COUNTY, COLORADO

OGDP Map
HARAMBE 2929 / 2920
WELD COUNTY, COLORADO

Well List / Status
Within 2000' Harambe-Georgene
Unit Buffer

Location ID	Operator	Well Name	Location Name	Location	Type	Well Status
<div></div> 409649	UNITED STATES EXPLORATION INC	41-31 PARKER	PARKER-62N64W 31NENE	Sec 31 2N 64W	PLANNED	AL - Abandoned Location
<div></div> 409666	NOBLE ENERGY PRODUCTION INC	20-8JI KELLER Y	KELLER Y-62N64W 20SENE	Sec 20 2N 64W	PLANNED	AL - Abandoned Location
<div></div> 305718	BLUE & GRAY ENERGY INC	22-34 FRITZLER	FRITZLER-62N64W 34SENW	Sec 34 2N 64W		AL - Abandoned Location
<div></div> 302651	BLUE & GRAY ENERGY INC	14-34 FRITZLER	FRITZLER-62N64W 34SWSW	Sec 34 2N 64W		AL - Abandoned Location
<div></div> 452529	NOBLE ENERGY INC	Y34-784 Shufly State	Y34-13 Pad	Sec 34 2N 64W		AL - Abandoned Location
<div></div> 452529	NOBLE ENERGY INC	Y34-764 Shufly State	Y34-13 Pad	Sec 34 2N 64W		AL - Abandoned Location
<div></div> 452529	NOBLE ENERGY INC	Y34-774 Shufly State	Y34-13 Pad	Sec 34 2N 64W		AL - Abandoned Location
<div></div> 454345	VERDAD RESOURCES LLC	33-4H Jackson	Jackson 02N-64W-33	Sec 33 2N 64W		AL - Abandoned Location
<div></div> 454345	VERDAD RESOURCES LLC	33-5H Jackson	Jackson 02N-64W-33	Sec 33 2N 64W		AL - Abandoned Location
<div></div> 454345	VERDAD RESOURCES LLC	33-3H Jackson	Jackson 02N-64W-33	Sec 33 2N 64W		AL - Abandoned Location
<div></div> 454345	VERDAD RESOURCES LLC	33-2H Jackson	Jackson 02N-64W-33	Sec 33 2N 64W		AL - Abandoned Location
<div></div> 454345	VERDAD RESOURCES LLC	33-8H Jackson	Jackson 02N-64W-33	Sec 33 2N 64W		AL - Abandoned Location
<div></div> 454345	VERDAD RESOURCES LLC	33-1H Jackson	Jackson 02N-64W-33	Sec 33 2N 64W		AL - Abandoned Location
<div></div> 454345	VERDAD RESOURCES LLC	33-S2H Jackson	Jackson 02N-64W-33	Sec 33 2N 64W		AL - Abandoned Location
<div></div> 454345	VERDAD RESOURCES LLC	33-S1H Jackson	Jackson 02N-64W-33	Sec 33 2N 64W		AL - Abandoned Location
<div></div> 404798	NEBRASKA DRILLERS INC	1 RUHL	RUHL-62N64W 20SENW	Sec 20 2N 64W	ACTUAL	AL - Abandoned Location
<div></div> 405842	CRESTONE PEAK RESOURCES OPERATING LLC	1 KAMINSKY	KAMINSKY-62N64W 30NENE	Sec 30 2N 64W	ACTUAL	DA - Dry and Abandoned
<div></div> 159607	NGL WATER SOLUTIONS DJ LLC	C5A NGL	NGL C5A & C5B	Sec 29 2N 64W	ACTUAL	IJ - Injecting
<div></div> 159607	NGL WATER SOLUTIONS DJ LLC	C5B NGL	NGL C5A & C5B	Sec 29 2N 64W	ACTUAL	IJ - Injecting
<div></div> 317749	HIGHPOINT OPERATING CORPORATION	29 STEINWALD	STEINWALD-61N64W 4NENE	Sec 4 1N 64W	ACTUAL	PA - Plugged and Abandoned
<div></div> 318986	CRESTONE PEAK RESOURCES OPERATING LLC	1 RUHL	RUHL-62N64W 32NENE	Sec 32 2N 64W	ACTUAL	PA - Plugged and Abandoned
<div></div> 407319	NOBLE ENERGY INC	77-28 BRNAK	BRNAK-62N64W 28CSE	Sec 28 2N 64W	ACTUAL	PA - Plugged and Abandoned
<div></div> 319218	PDC ENERGY INC	1 STEINWALD	STEINWALD-61N64W 3NWNW	Sec 3 1N 64W	ACTUAL	PA - Plugged and Abandoned
<div></div> 323194	CRESTONE PEAK RESOURCES OPERATING LLC	1 GRATTAN	GRATTAN-62N64W /30SESE 1	Sec 30 2N 64W	ACTUAL	PA - Plugged and Abandoned
<div></div> 327277	NOBLE ENERGY INC	1-29 JIM CREEK	JIM CREEK-62N64W 29SWSW	Sec 29 2N 64W	ACTUAL	PA - Plugged and Abandoned
<div></div> 328809	NOBLE ENERGY INC	1-29 KAMINSKY	KAMINSKY-62N64W 29SWNW	Sec 29 2N 64W	ACTUAL	PA - Plugged and Abandoned
<div></div> 329000	NOBLE ENERGY INC	17-15Q UPRC	UPRC-62N64W 17SWSE	Sec 17 2N 64W	ACTUAL	PA - Plugged and Abandoned
<div></div> 329864	CRESTONE PEAK RESOURCES OPERATING LLC	1 DALE 'E' UNIT	DALE 'E' UNIT-62N64W 20NWSE	Sec 20 2N 64W	ACTUAL	PA - Plugged and Abandoned
<div></div> 330034	NOBLE ENERGY INC	33-15K4 UPV	UPV-62N64W 33SWSE	Sec 33 2N 64W	ACTUAL	PA - Plugged and Abandoned
<div></div> 331522	PDC ENERGY INC	11-28 RIES	RIES-62N64W 28NWNW	Sec 28 2N 64W	ACTUAL	PA - Plugged and Abandoned
<div></div> 331679	PDC ENERGY INC	21-28 BRYCE	BRYCE-62N64W 28NENW	Sec 28 2N 64W	ACTUAL	PA - Plugged and Abandoned
<div></div> 331898	CRESTONE PEAK RESOURCES OPERATING LLC	2-32 NEWNAM	NEWMAN-62N64W 32CNW	Sec 32 2N 64W	ACTUAL	PA - Plugged and Abandoned
<div></div> 305082	PDC ENERGY INC	32-28 STONEBRAKER	STONEBRAKER-62N64W 28SWNE	Sec 28 2N 64W	ACTUAL	PA - Plugged and Abandoned
<div></div> 305083	PDC ENERGY INC	42-28 STONEBRAKER	STONEBRAKER 28W-HZ Pad	Sec 28 2N 64W	ACTUAL	PA - Plugged and Abandoned
<div></div> 305210	NOBLE ENERGY INC	14-29 BAUMGARTNER	BAUMGARTNER-62N64W 29SWSW	Sec 29 2N 64W	ACTUAL	PA - Plugged and Abandoned
<div></div> 421545	NOBLE ENERGY INC	20-03 STARKE Y	STARME Y 20-03	Sec 20 2N 64W	ACTUAL	PA - Plugged and Abandoned
<div></div> 318843	NOBLE ENERGY INC	1 CHAMPLIN 246 AMOCO A	CHAMPLIN 246 AMOCO A-62N64W 27SESW	Sec 27 2N 64W	ACTUAL	PR - Producing
<div></div> 327244	NOBLE ENERGY INC	1 UPRR 62 PAN AM L	UPRR 62 PAN AM L-62N64W 19CNE	Sec 19 2N 64W	ACTUAL	PR - Producing
<div></div> 331176	NOBLE ENERGY INC	15-18 HSR-HARKIS	HSR-HARKIS-62N64W 18SWSE	Sec 18 2N 64W	ACTUAL	PR - Producing
<div></div> 422818	NOBLE ENERGY INC	16N-19HZ ROBERTSON	ROBERTSON 16C-19HZ	Sec 19 2N 64W	ACTUAL	PR - Producing
<div></div> 422818	NOBLE ENERGY INC	15C-19HZ ROBERTSON	ROBERTSON 16C-19HZ	Sec 19 2N 64W	ACTUAL	PR - Producing
<div></div> 422818	NOBLE ENERGY INC	16C-19HZ ROBERTSON	ROBERTSON 16C-19HZ	Sec 19 2N 64W	ACTUAL	PR - Producing
<div></div> 425380	CRESTONE PEAK RESOURCES OPERATING LLC	4B-30H GRATTAN	GRATTAN 62N64W/30 SESE 4A-30H PAD	Sec 30 2N 64W	ACTUAL	PR - Producing
<div></div> 425380	CRESTONE PEAK RESOURCES OPERATING LLC	4A-30H GRATTAN	GRATTAN 62N64W/30 SESE 4A-30H PAD	Sec 30 2N 64W	ACTUAL	PR - Producing
<div></div> 305083	PDC ENERGY INC	28V-404 Stonebraker	Stonebraker 28W-HZ Pad	Sec 28 2N 64W	ACTUAL	PR - Producing
<div></div> 305083	PDC ENERGY INC	28W-304 Stonebraker	Stonebraker 28W-HZ Pad	Sec 28 2N 64W	ACTUAL	PR - Producing
<div></div> 305083	PDC ENERGY INC	28V-234 Stonebraker	Stonebraker 28W-HZ Pad	Sec 28 2N 64W	ACTUAL	PR - Producing
<div></div> 305083	PDC ENERGY INC	28V-314 Stonebraker	Stonebraker 28W-HZ Pad	Sec 28 2N 64W	ACTUAL	PR - Producing
<div></div> 437845	CRESTONE PEAK RESOURCES OPERATING LLC	4E-20H-O264 Dale	Dale 20H-O264	Sec 20 2N 64W	ACTUAL	PR - Producing
<div></div> 437845	CRESTONE PEAK RESOURCES OPERATING LLC	4B-20H-O264 Dale	Dale 20H-O264	Sec 20 2N 64W	ACTUAL	PR - Producing
<div></div> 437845	CRESTONE PEAK RESOURCES OPERATING LLC	4H-20H-O264 Dale	Dale 20H-O264	Sec 20 2N 64W	ACTUAL	PR - Producing
<div></div> 437845	CRESTONE PEAK RESOURCES OPERATING LLC	4G-20H-O264 Dale	Dale 20H-O264	Sec 20 2N 64W	ACTUAL	PR - Producing
<div></div> 437845	CRESTONE PEAK RESOURCES OPERATING LLC	4C-20H-O264 Dale	Dale 20H-O264	Sec 20 2N 64W	ACTUAL	PR - Producing
<div></div> 437845	CRESTONE PEAK RESOURCES OPERATING LLC	4J-20H-O264 Dale	Dale 20H-O264	Sec 20 2N 64W	ACTUAL	PR - Producing
<div></div> 437845	CRESTONE PEAK RESOURCES OPERATING LLC	4D-20H-O264 Dale	Dale 20H-O264	Sec 20 2N 64W	ACTUAL	PR - Producing
<div></div> 437845	CRESTONE PEAK RESOURCES OPERATING LLC	4F-20H-O264 Dale	Dale 20H-O264	Sec 20 2N 64W	ACTUAL	PR - Producing
<div></div> 437845	CRESTONE PEAK RESOURCES OPERATING LLC	4K-20H-O264 Dale	Dale 20H-O264	Sec 20 2N 64W	ACTUAL	PR - Producing
<div></div> 437845	CRESTONE PEAK RESOURCES OPERATING LLC	4A-20H-O264 Dale	Dale 20H-O264	Sec 20 2N 64W	ACTUAL	PR - Producing
<div></div> 437930	CRESTONE PEAK RESOURCES OPERATING LLC	2B-32H C264 Newnam	Newnam 32H-C264	Sec 32 2N 64W	ACTUAL	PR - Producing
<div></div> 437930	CRESTONE PEAK RESOURCES OPERATING LLC	2C-32H C264 Newnam	Newnam 32H-C264	Sec 32 2N 64W	ACTUAL	PR - Producing
<div></div> 437930	CRESTONE PEAK RESOURCES OPERATING LLC	2A-32H C264 Newnam	Newnam 32H-C264	Sec 32 2N 64W	ACTUAL	PR - Producing
<div></div> 437930	CRESTONE PEAK RESOURCES OPERATING LLC	2D-32H C264 Newnam	Newnam 32H-C264	Sec 32 2N 64W	ACTUAL	PR - Producing
<div></div> 437930	CRESTONE PEAK RESOURCES OPERATING LLC	2F-32H C264 Newnam	Newnam 32H-C264	Sec 32 2N 64W	ACTUAL	PR - Producing
<div></div> 437930	CRESTONE PEAK RESOURCES OPERATING LLC	2I-32H C264 Newnam	Newnam 32H-C264	Sec 32 2N 64W	ACTUAL	PR - Producing
<div></div> 437930	CRESTONE PEAK RESOURCES OPERATING LLC	2K-32H C264 Newnam	Newnam 32H-C264	Sec 32 2N 64W	ACTUAL	PR - Producing
<div></div> 439042	CRESTONE PEAK RESOURCES OPERATING LLC	1J-32H-B264 Ruhl	Ruhl 32H-B264 East	Sec 32 2N 64W	ACTUAL	PR - Producing
<div></div> 439041	CRESTONE PEAK RESOURCES OPERATING LLC	1E-32H-B264 Ruhl	Ruhl 32H-B264 West	Sec 32 2N 64W	ACTUAL	PR - Producing
<div></div> 439042	CRESTONE PEAK RESOURCES OPERATING LLC	1L-32H-B264 Ruhl	Ruhl 32H-B264 East	Sec 32 2N 64W	ACTUAL	PR - Producing
<div></div> 439041	CRESTONE PEAK RESOURCES OPERATING LLC	1C-32H-B264 Ruhl	Ruhl 32H-B264 West	Sec 32 2N 64W	ACTUAL	PR - Producing
<div></div> 439042	CRESTONE PEAK RESOURCES OPERATING LLC	1K-32H-B264 Ruhl	Ruhl 32H-B264 East	Sec 32 2N 64W	ACTUAL	PR - Producing
<div></div> 439041	CRESTONE PEAK RESOURCES OPERATING LLC	1D-32H-B264 Ruhl	Ruhl 32H-B264 West	Sec 32 2N 64W	ACTUAL	PR - Producing
<div></div> 439041	CRESTONE PEAK RESOURCES OPERATING LLC	1B-32H-B264 Ruhl	Ruhl 32H-B264 East	Sec 32 2N 64W	ACTUAL	PR - Producing
<div></div> 439042	CRESTONE PEAK RESOURCES OPERATING LLC	1H-32H-B264 Ruhl	Ruhl 32H-B264 West	Sec 32 2N 64W	ACTUAL	PR - Producing
<div></div> 437930	CRESTONE PEAK RESOURCES OPERATING LLC	2L-32H C264 Newnam	Newnam 32H-C264	Sec 32 2N 64W	ACTUAL	PR - Producing
<div></div> 454345	VERDAD RESOURCES LLC	33-6H Jackson	Jackson 02N-64W-33	Sec 33 2N 64W	ACTUAL	PR - Producing
<div></div> 454345	VERDAD RESOURCES LLC	33-7H Jackson	Jackson 02N-64W-33	Sec 33 2N 64W	ACTUAL	PR - Producing
<div></div> 317807	NOBLE ENERGY INC	1 DALE	DALE-62N64W 20SWSW	Sec 20 2N 64W	ACTUAL	SI - Shut In
<div></div> 322594	NOBLE ENERGY INC	1 FOY	FOY-62N64W 20NWNW	Sec 20 2N 64W	ACTUAL	SI - Shut In
<div></div> 330049	NOBLE ENERGY INC	33-7K4 UPV	UPV-62N64W 33SWNE	Sec 33 2N 64W	ACTUAL	SI - Shut In
<div></div> 331436	NOBLE ENERGY INC	29-34 PARKER	PARKER-62N64W 29SWSE	Sec 29 2N 64W	ACTUAL	SI - Shut In
<div></div> 331666	NOBLE ENERGY INC	10-19 OZBUN	OZBUN-62N64W 19NWSE	Sec 19 2N 64W	ACTUAL	SI - Shut In
<div></div> 332507	NOBLE ENERGY INC	41-29 BELL	BELL-62N64W 29NENE	Sec 29 2N 64W	ACTUAL	SI - Shut In
<div></div> 305437	NOBLE ENERGY INC	12-34 FRITZLER	FRITZLER-62N64W 34SWNW	Sec 34 2N 64W	ACTUAL	SI - Shut In
<div></div> 306226	NOBLE ENERGY INC	20-6 FOY Y	FOY Y-62N64W 20SENW	Sec 20 2N 64W	ACTUAL	SI - Shut In
<div></div> 420524	NOBLE ENERGY INC	Y29-03 Bell USX	Bell USX Y29-03	Sec 29 2N 64W	ACTUAL	SI - Shut In
<div></div> 437845	CRESTONE PEAK RESOURCES OPERATING LLC	4I-20H-O264 Dale	Dale 20H-O264	Sec 20 2N 64W	ACTUAL	SI - Shut In
<div></div> 437930	CRESTONE PEAK RESOURCES OPERATING LLC	2H-32H C264 Newnam	Newnam 32H-C264	Sec 32 2N 64W	ACTUAL	SI - Shut In
<div></div> 437930	CRESTONE PEAK RESOURCES OPERATING LLC	2E-32H C264 Newnam	Newnam 32H-C264	Sec 32 2N 64W	ACTUAL	SI - Shut In
<div></div> 437930	CRESTONE PEAK RESOURCES OPERATING LLC	2J-32H C264 Newnam	Newnam 32H-C264	Sec 32 2N 64W	ACTUAL	SI - Shut In
<div></div> 437930	CRESTONE PEAK RESOURCES OPERATING LLC	2G-32H C264 Newnam	Newnam 32H-C264	Sec 32 2N 64W	ACTUAL	SI - Shut In
<div></div> 439042	CRESTONE PEAK RESOURCES OPERATING LLC	1I-32H-B264 Ruhl	Ruhl 32H-B264 East	Sec 32 2N 64W	ACTUAL	SI - Shut In
<div></div> 439041	CRESTONE PEAK RESOURCES OPERATING LLC	1A-32H-B264 Ruhl	Ruhl 32H-B264 West	Sec 32 2N 64W	ACTUAL	SI - Shut In
<div></div> 439041	CRESTONE PEAK RESOURCES OPERATING LLC	1F-32H-B264 Ruhl	Ruhl 32H-B264 West	Sec 32 2N 64W	ACTUAL	SI - Shut In
<div></div> 439042	CRESTONE PEAK RESOURCES OPERATING LLC	1G-32H-B264 Ruhl	Ruhl 32H-B264 East	Sec 32 2N 64W	ACTUAL	SI - Shut In
<div></div> 328444	NOBLE ENERGY INC	17-13Q UPRC	UPRC-62N64W 17SWSW	Sec 17 2N 64W	PLANNED	TA - Temporarily Abandoned
<div></div> 328908	NOBLE ENERGY INC	20-2 KELLER	KELLER-62N64W 20WNWE	Sec 20 2N 64W	ACTUAL	TA - Temporarily Abandoned
<div></div> 330033	NOBLE ENERGY INC	33-13K4 UPV	UPV-62N64W 33SWSW	Sec 33 2N 64W	ACTUAL	TA - Temporarily Abandoned
<div></div> 332259	NOBLE ENERGY INC	23-28 GREER	GREER-62N64W 28NESW	Sec 28 2N 64W	ACTUAL	TA - Temporarily Abandoned
<div></div> 305122	NOBLE ENERGY INC	14-28 GREER	GREER-62N64W 28SWSW	Sec 28 2N 64W	ACTUAL	TA - Temporarily Abandoned
<div></div> 305493	NOBLE ENERGY INC	13-28 GREER	GREER-62N64W 28NWSW	Sec 28 2N 64W	ACTUAL	TA - Temporarily Abandoned
<div></div> 305636	NOBLE ENERGY INC	24-28 GREER	GREER-62N64W 28SESW	Sec 28 2N 64W	ACTUAL	TA - Temporarily Abandoned
<div></div> 305637	NOBLE ENERGY INC	17-14JI LANA Y	LANA Y-62N64W 17SESW	Sec 17 2N 64W	ACTUAL	TA - Temporarily Abandoned
<div></div> 302371	NOBLE ENERGY INC	34-28 BRNAK	BRNAK-62N64W 28SWSE	Sec 28 2N 64W	ACTUAL	TA - Temporarily Abandoned
<div></div> 302617	NOBLE ENERGY INC	44-28 BRNAK	BRNAK-62N64W 28SESE	Sec 28 2N 64W	ACTUAL	TA - Temporarily Abandoned
<div></div> 422818	NOBLE ENERGY INC	15N-19HZ ROBERTSON	ROBERTSON 16C-19HZ	Sec 19 2N 64W	ACTUAL	TA - Temporarily Abandoned
<div></div> 424438	NOBLE ENERGY INC	Y31-01 Land USX	Land USX Y31-01	Sec 31 2N 64W	ACTUAL	TA - Temporarily Abandoned
<div></div> 440017	NGL WATER SOLUTIONS DJ LLC	C5 NGL	NGL C5	Sec 29 2N 64W	ACTUAL	TA - Temporarily Abandoned
<div></div> 473534	VERDAD RESOURCES LLC	2833-02H Georgene	Georgene 2828-2833	Sec 28 2N 64W		XX - Permitted Location
<div></div> 473534	VERDAD RESOURCES LLC	2828-02H Georgene	Georgene 2828-2833	Sec 28 2N 64W		XX - Permitted Location
<div></div> 473534	VERDAD RESOURCES LLC	2828-01H Georgene	Georgene 2828-2833	Sec 28 2N 64W		XX - Permitted Location
<div></div> 473534	VERDAD RESOURCES LLC	2833-04H Georgene	Georgene 2828-2833	Sec 28 2N 64W		XX - Permitted Location
<div></div> 473534	VERDAD RESOURCES LLC	2833-01H Georgene	Georgene 2828-2833	Sec 28 2N 64W		XX - Permitted Location
<div></div> 473534	VERDAD RESOURCES LLC	2828-04H Georgene	Georgene 2828-2833	Sec 28 2N 64W		XX - Permitted Location
<div></div> 473534	VERDAD RESOURCES LLC	2828-03H Georgene	Georgene 2828-2833	Sec 28 2N 64W		XX - Permitted Location
<div></div> 473534	VERDAD RESOURCES LLC	2833-03H Georgene	Georgene 2828-2833	Sec 28 2N 64W		XX - Permitted Location



VERDAD RESOURCES HARAMBE 2929 / 2920			
FIELD	09/14/2021	DRAFT	SW
REV X	04/11/2022	CHECK	ZAK
SHEET :	1 OF 1	JOB:	138558